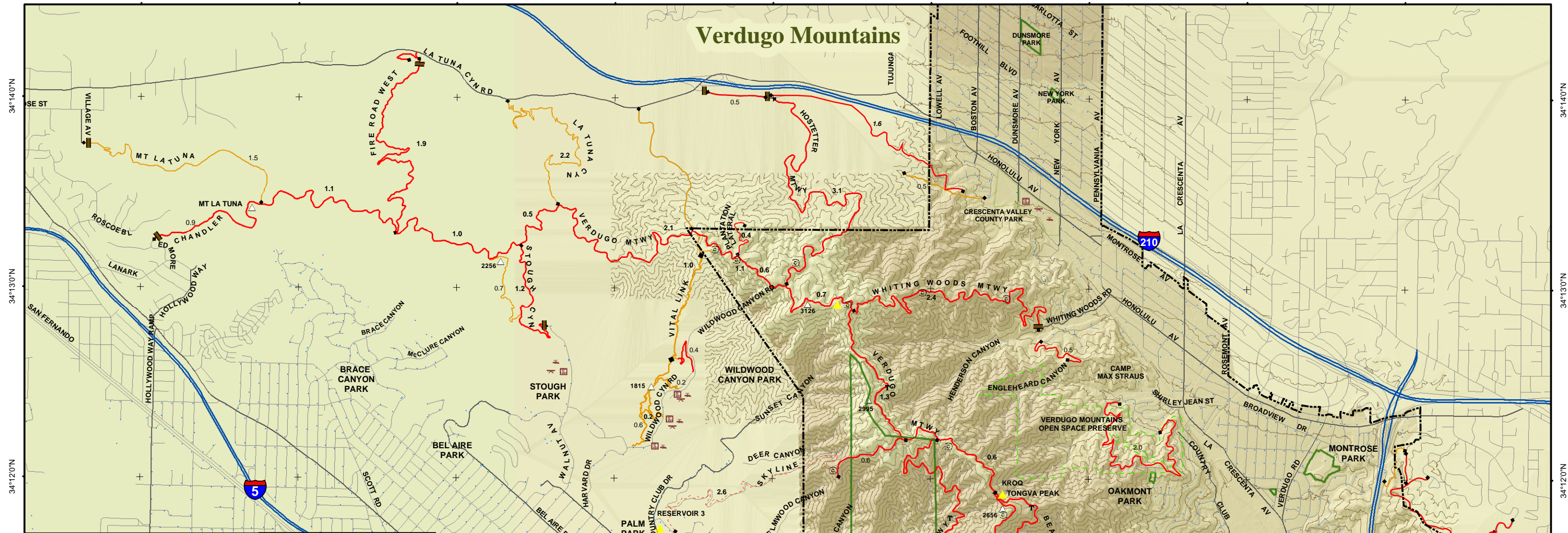


118°21'0"W 118°20'0"W 118°19'0"W 118°18'0"W 118°17'0"W 118°16'0"W 118°15'0"W 118°14'0"W 118°13'0"W

Verdugo Mountains

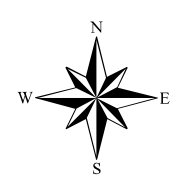


- ### HIKING ADVISORY
1. Know your limitations
 2. Bring a companion; never hike alone
 3. Stay on the trail
 4. Stay hydrated - drink plenty of water
 5. Protect yourself from the sun
 6. Tell someone where you are going and when you plan to return
 7. Bring a cellphone in case you or someone in your group needs to call for help
 8. NO SMOKING
 9. NO CAMPFIRES
 10. IN CASE OF EMERGENCY, dial 9-1-1

- ### HIKING ESSENTIALS
1. Map of the area
 2. Compass
 3. Flashlights
 4. Sunglasses
 5. Extra food and water
 6. Extra clothing
 7. Waterproof matches
 8. Pocketknife
 9. First-aid kit

	Elevation (feet)		Gate
	Drinking Water		Fire Road
	Picnic Area		Road
	Restroom		Access Road
	Hydrant		Freeway
	Cistern		City Boundary
	Water Tank		Trail
	Helispot		Abandoned Fire Road
	Radio Site		Distance (miles)
	Park		100ft Contour
			Open Space Preserve

Scale: 3,000 1,500 0 3,000 Feet

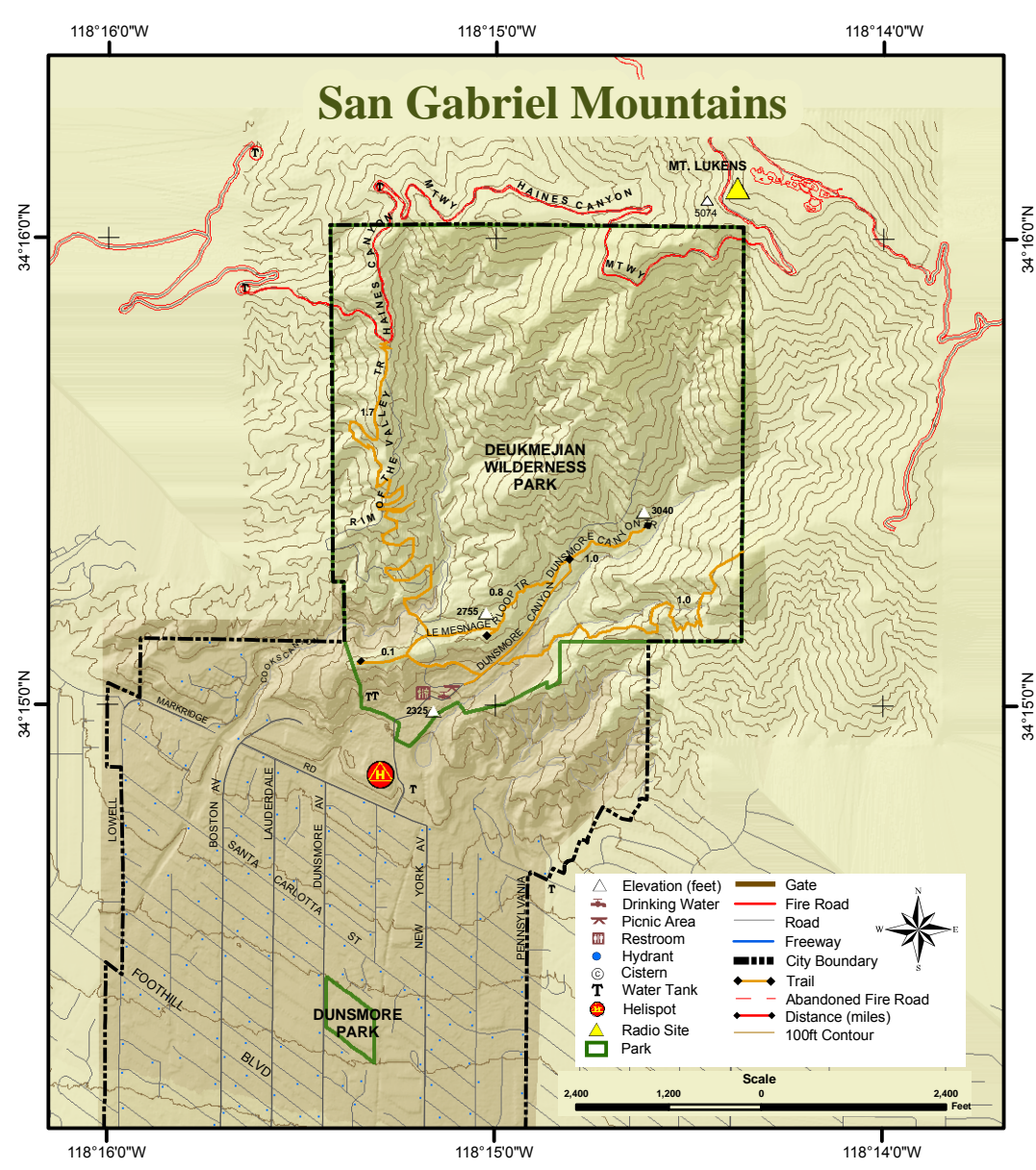
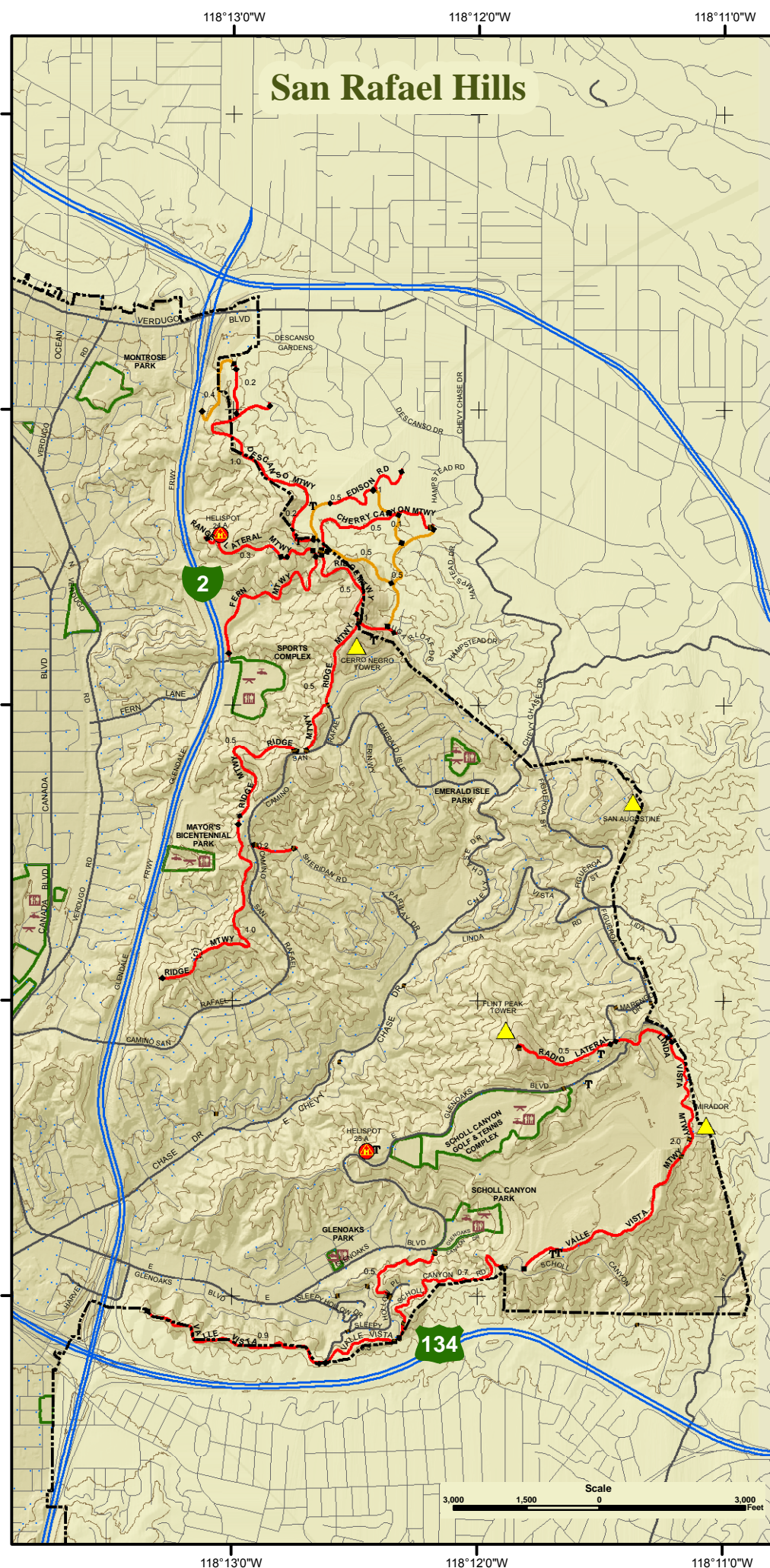


Source: Street Center Lines Copyright (C) 2002 Thomas Bros. Maps and City of Glendale GIS data Date: January 31, 2007

118°21'0"W 118°20'0"W 118°19'0"W 118°18'0"W 118°17'0"W 118°16'0"W 118°15'0"W 118°14'0"W 118°13'0"W

34°14'0"N
34°13'0"N
34°12'0"N
34°11'0"N
34°10'0"N

34°14'0"N
34°13'0"N
34°12'0"N
34°11'0"N
34°10'0"N



Multi-Use Trail Etiquette

Safe use on multiple use trails requires everyone's cooperation. Each trail user is asked to exercise common courtesy. BICYCLES YIELD to horses and hikers. HIKERS YIELD to horses. Stay to the right of the trail except when passing.

NO MOTORIZED VEHICLES are permitted on the trail, wheelchairs excepted.

ALL TRAIL USERS

- Be safe, considerate and aware of your impact on the trail and other trail users.
- For everyone's safety keep to the right. Proceed single file around blind curves.
- Safety helmets are required by law for bicyclists under age 18 and are strongly recommended for all bicyclists and equestrians.
- Dogs must be on a leash. Please clean up after your dog.



The Parks, Recreation & Community Services Department/Park Ranger Section offers a variety of programs and services for the community. Ranger led programs highlight the open space and natural areas in the city, and encourage visitors to develop an appreciation for the native plants and animals. For information about hikes or other interpretive programs call the Glendale Park Ranger Office at (818) 548-3795.

City of Glendale Trails and Fire Roads



**Verdugo Mountains
San Rafael Hills
San Gabriel Mountains**



Parks, Recreation & Community Services Department
613 E. Broadway, Room 120
Glendale, CA 91206
(818) 548-2000
www.ci.glendale.ca.us/parks