

Adopted BUDGET

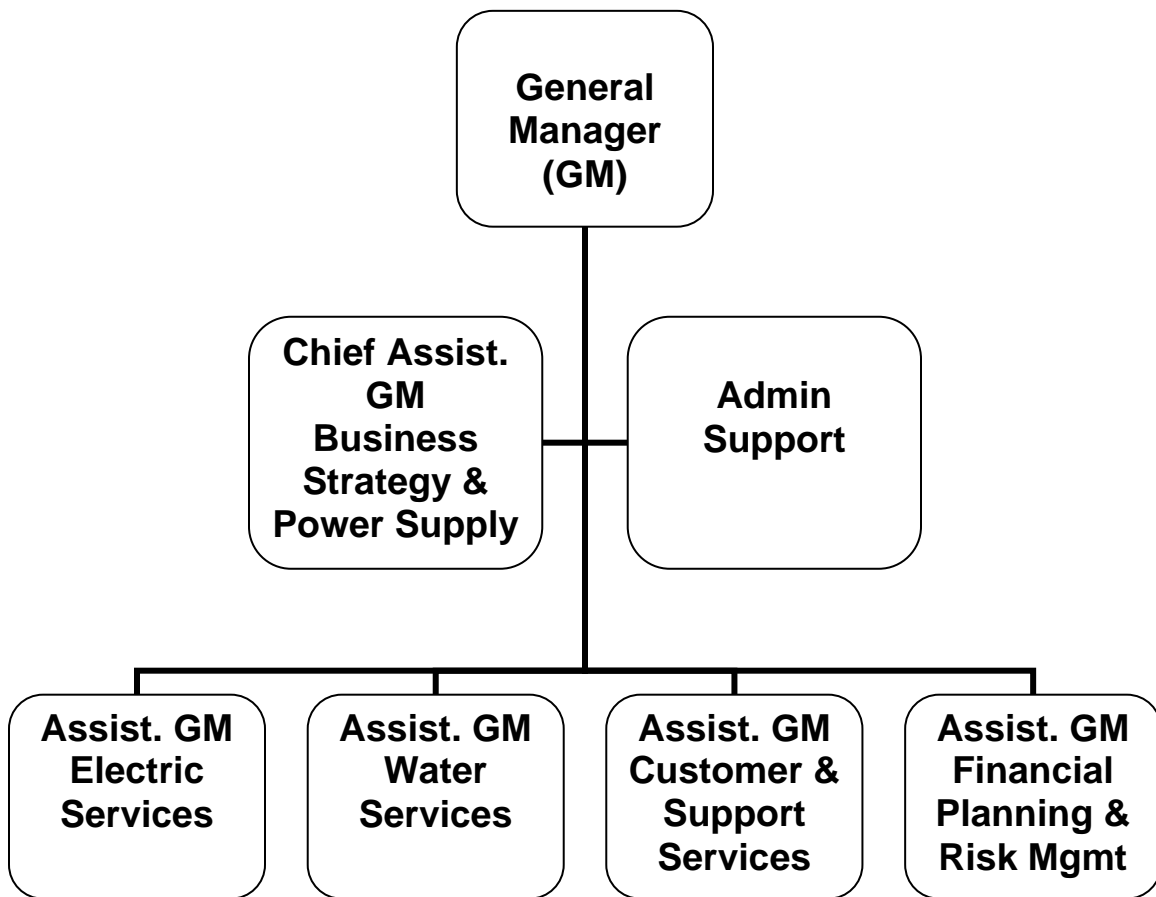
City of Glendale, CA

2011 - 2012

*Fund to be known as
and interest on loans
those from the dep
and those which
or are herein ordered
credited to said fund, and all disbursements,
general budget appropriations, excepting such appropriations as
some other
and
all
get
on
for
ated.*



GLENDALE WATER & POWER



CITY OF GLENDALE

GLENDALE WATER & POWER

MISSION STATEMENT

GWP provides customers with reliable and sustainable water and power services that are cost effective and innovative. This vision is accomplished through the prudent use of resources, technology, innovation, teamwork and planning to ensure sufficient supply for today and the future.

DEPARTMENT DESCRIPTION

GWP consists of four divisions:

- Electrical Services
- Customer and Support Services
- Power Supply
- Water Services

The focus of these divisions is to ensure that the City is served well today, and is poised to meet future challenges. The key components in GWP's operation include:

Electric Services - Provide reliable and efficient electric service by maintaining and making continuous improvements in the power delivery system.

Water Supply - Maximize the production of local water resources and the efficiency of water use.

Power Supply - Ensure reliable power supply under severe legislative /regulatory controls and restrictions through a portfolio of resources, including a reconfigured Grayson Power Plant.

Customer & Support Services - Achieve high customer satisfaction levels by increasing the value of all GWP programs and services.

Rates - Achieve water and electric rates that are at the median of comparable utilities in Southern California.

Infrastructure - Assure high service reliability by continuously improving and maintaining the GWP physical plant, electric and water facilities.

Work Force - Hire, develop, and retain a safe, highly skilled, dedicated, and customer-focused work force.

Systems - Utilize new and existing information systems and technologies that reduce GWP's costs, enhance customer service, and increase operational effectiveness.

Legislation and Regulation - Influence local, state, and federal legislation and regulations to benefit the customers and GWP's efficient operation.

RELATIONSHIP TO STRATEGIC GOALS

Informed & Engaged Community

The successful implementation of the Smart Grid project will position GWP in the forefront of technology, giving customers access to real time information. With the support of the Water and Electric Services Divisions, the Customer and Support Services Division has led GWP's move to the Smart Grid for the past two years. Smart Grid provides the foundation for a host of functions to make GWP more energy

CITY OF GLENDALE

GLENDALE WATER & POWER

efficient and to help customers better manage their electric and water usage, and thereby reducing their utility bills.

The Customer and Support Services Division plays a strong role in a number of areas of the strategic plan, including communications with customers and internal stakeholders, helping to reduce customer energy and water consumption, helping reduce electric and water rates, and working to implement new technologies, such as the Advanced Metering Infrastructure and Meter Data Management System (all part of the Smart Grid) to prepare GWP for the future.

Infrastructure & Mobility

GWP will provide reliable electrical service by implementing the following:

- Reducing the number of outages by 25 per year
- Replacing aging infrastructure and proper planning of future infrastructure
- Implementing effective asset management

**CITY OF GLENDALE
SUMMARY OF APPROPRIATIONS
GLENDALE WATER & POWER DEPARTMENT**

	Actual 2009-10	Adopted 2010-11	Revised 2010-11	Adopted 2011-12
<u>Electric Utility</u>				
Electric Public Benefits Fund (290-901)	8,052,913	8,260,800	8,422,570	7,379,200
Electric Works Revenue Fund				
Administration (552-911)	23,236,042	25,560,000	25,560,000	28,515,000
Power Management (552-921)	114,768,830	149,563,531	149,563,531	136,058,200
Electric Services (552-931)	20,723,911	21,705,500	21,705,500	23,034,200
Customer Services (552-971)	7,159,139	7,814,400	7,814,400	5,325,300
Total Electric Works Revenue Fund	165,887,922	204,643,431	204,643,431	192,932,700
Electric Depreciation Fund				
Administration (553-911)	(34,910,865)	4,237,500	4,567,500	3,674,000
Power Management (553-921)	2,519,368	4,544,600	7,661,100	6,816,300
Electric Services (553-931)	32,391,497	45,277,504	50,277,504	38,725,100
Total Electric Depreciation Fund	-	54,059,604	62,506,104	49,215,400
Electric SCAQMD State Sales Fund (554-921)	-	25,000	25,000	-
Total Electric Utility	\$ 173,940,835	\$ 266,988,835	\$ 275,597,105	\$ 249,527,300
<u>Water Utility</u>				
Water Works Revenue Fund				
Administration (572-911)	4,753,883	6,425,000	6,425,000	7,575,000
Water Services (572-951)	26,710,463	26,693,200	26,693,200	31,179,900
Customer Services (572-971)	2,386,384	3,012,200	3,012,200	5,012,900
Total Water Works Revenue Fund	33,850,731	36,130,400	36,130,400	43,767,800
Water Depreciation Fund				
Administration (573-911)	(24,069,656)	1,412,500	1,522,500	1,224,600
Water Services (573-951)	24,069,656	24,143,342	25,843,342	23,690,300
Total Water Depreciation Fund	-	25,555,842	27,365,842	24,914,900
Total Water Utility	\$ 33,850,731	\$ 61,686,242	\$ 63,496,242	\$ 68,682,700
<u>Transfers</u>				
Electric Works Revenue Fund (552-911)	19,107,000	19,107,000	19,107,000	21,107,000
Water Works Revenue Fund (572-911)	4,160,000	4,160,000	4,160,000	-
Total Transfers	\$ 23,267,000	\$ 23,267,000	\$ 23,267,000	\$ 21,107,000
Department Grand Total	\$ 231,058,566	\$ 351,942,077	\$ 362,360,347	\$ 339,317,000

**CITY OF GLENDALE
 GLENDALE WATER & POWER DEPARTMENT
 ELECTRIC PUBLIC BENEFITS FUND
 290-901**

		Actual 2009-10	Adopted 2010-11	Revised 2010-11	Adopted 2011-12
SALARIES & BENEFITS					
41100	Salaries	260,022	282,500	282,500	390,600
41200	Overtime	2,199	5,000	5,000	5,000
41300	Hourly wages	42,853	6,000	167,770	-
	Total Salaries & Benefits	305,074	293,500	455,270	395,600
MAINTENANCE & OPERATION					
42800	Auto allowance	9,241	10,500	10,500	10,500
43070	Lease payments	23,776	25,000	25,000	25,000
43110	Contractual services	3,042,845	3,455,000	3,455,000	2,920,000
43111	Construction services	460,276	-	-	-
44200	Advertising	-	10,000	10,000	10,000
44300	Telephone	536	1,000	1,000	-
44450	Postage	21,801	30,000	30,000	30,000
44550	Travel	-	6,400	6,400	6,400
44650	Training	-	4,500	4,500	4,500
44700	Computer software	601	-	-	-
44750	Liability	6,712	-	-	-
44800	Membership and dues	305	1,000	1,000	1,000
45050	Periodicals & newspapers	-	500	500	500
45100	Books	-	500	500	500
45150	Furniture & equipment	-	10,000	10,000	10,000
45250	Office supplies	88	2,000	2,000	2,000
45450	Printing and graphics	1,321	-	-	-
45512	Public benefit programs	-	4,000,700	4,000,700	3,330,200
45600	A & G overhead	154,466	154,800	154,800	250,000
45610	Section overhead	72,690	63,000	63,000	86,000
45621	Employee benefit overhead	148,583	166,400	166,400	250,000
46500	Uncollectible accounts	23,537	25,000	25,000	25,000
46900	Business meetings	149	1,000	1,000	1,000
47000	Miscellaneous	3,780,912	-	-	21,000
	Total Maintenance & Operation	7,747,839	7,967,300	7,967,300	6,983,600
TOTAL		\$ 8,052,913	\$ 8,260,800	\$ 8,422,570	\$ 7,379,200

**CITY OF GLENDALE
 GLENDALE WATER & POWER DEPARTMENT
 ELECTRIC OPERATION FUND-ADMINISTRATION
 551-911**

		Actual 2009-10	Adopted 2010-11	Revised 2010-11	Adopted 2011-12
SALARIES & BENEFITS					
41100	Salaries	7,390,393	6,987,752	6,987,752	6,610,500
41200	Overtime	106,334	65,500	65,500	42,500
41300	Hourly wages	122,561	48,601	48,601	10,000
41600-42600	Benefits	6,659,319	7,835,914	7,835,914	8,628,223
42700	PERS retirement	3,587,943	3,909,804	3,909,804	5,351,476
	Total Salaries & Benefits	17,866,550	18,847,571	18,847,571	20,642,699
MAINTENANCE & OPERATION					
42800	Auto allowance	16,218	79,300	79,300	85,300
42900	Uniform allowance	30,450	35,000	35,000	35,000
43050	Repairs-bldgs & grounds	352,424	617,500	617,500	625,000
43060	Utilities	548,071	654,500	654,500	645,000
43070	Lease payments	6,148	30,000	30,000	30,000
43090	Equipment usage	68,738	50,500	50,500	33,000
43110	Contractual services	946,135	1,523,300	1,523,300	1,431,800
43111	Construction services	1,325,817	3,883,000	3,883,000	4,175,000
43150	Cost allocation charge	5,411,078	5,631,445	5,631,445	5,596,963
44100	Repairs to equipment	968	1,000	1,000	3,000
44120	Repairs to office equip	2,956	8,600	8,600	6,600
44250	Data communication	2,466	-	-	-
44300	Telephone	8,251	12,100	12,100	-
44350	Vehicle maintenance	-	1,000	1,000	1,000
44352	ISD service charge	-	3,480,778	3,480,778	3,818,753
44400	Janitorial services	19,129	22,000	22,000	22,000
44450	Postage	1,263	2,500	2,500	2,000
44550	Travel	31,281	56,700	56,700	58,000
44650	Training	28,763	110,000	110,000	115,000
44700	Computer software	23,624	24,700	24,700	23,700
44750	Liability	1,245,838	912,364	912,364	955,692
44751	Insurance/surety bond premium	-	775,557	775,557	825,667
44760	Regulatory	29,973	89,500	89,500	46,000
44800	Membership and dues	6,225	24,200	24,200	11,200
45050	Periodicals & newspapers	4,837	4,000	4,000	4,500
45100	Books	1,660	3,200	3,200	4,200
45150	Furniture & equipment	59,383	149,900	149,900	85,400
45170	Computer hardware	54,050	66,200	66,200	66,200
45200	Maps and blue prints	600	-	-	-
45250	Office supplies	80,682	84,500	84,500	92,500
45300	Small tools	547	2,200	2,200	2,200
45350	General supplies	300,931	199,100	199,100	71,600
45400	Reports & publications	2,648	2,700	2,700	2,700
45450	Printing and graphics	18,047	66,200	66,200	62,200
45504	Fuel - diesel gas	-	2,000	2,000	2,000
45600	A & G overhead	66,062	144,000	144,000	32,000
45610	Section overhead	36,129	-	-	-
45620	Material overhead	24,118	22,400	22,400	20,000
45621	Employee benefit overhead	999,863	1,091,400	1,091,400	1,247,401
46900	Business meetings	8,655	16,500	16,500	11,500
47000	Miscellaneous	145,695	213,000	213,000	185,600
47010	Discount earned & lost	-	5,000	5,000	-

**CITY OF GLENDALE
 GLENDALE WATER & POWER DEPARTMENT
 ELECTRIC OPERATION FUND-ADMINISTRATION
 551-911**

		Actual 2009-10	Adopted 2010-11	Revised 2010-11	Adopted 2011-12
Total Maintenance & Operation		11,909,723	20,097,844	20,097,844	20,435,676
CAPITAL OUTLAY					
51000	Capital outlay	38,363	244,000	244,000	60,000
	Total Capital Outlay	38,363	244,000	244,000	60,000
CAPITAL PROJECTS					
51250	Equipment	180,329	-	440,000	185,000
51800	Mobile equipment	-	120,000	120,000	-
	Total Capital Projects	180,329	120,000	560,000	185,000
ALLOCATION OFFSET					
70060	Allocation Offset	(29,994,965)	(39,309,415)	(39,749,415)	(41,323,375)
TOTAL		\$ -	\$ -	\$ -	\$ -

**CITY OF GLENDALE
 GLENDALE WATER & POWER DEPARTMENT
 ELECTRIC OPERATION FUND-POWER MANAGEMENT
 551-921**

		Actual 2009-10	Adopted 2010-11	Revised 2010-11	Adopted 2011-12
SALARIES & BENEFITS					
41100	Salaries	259,948	475,000	475,000	330,000
	Total Salaries & Benefits	<u>259,948</u>	<u>475,000</u>	<u>475,000</u>	<u>330,000</u>
MAINTENANCE & OPERATION					
42800	Auto allowance	5,336	4,000	4,000	4,000
43110	Contractual services	433	-	-	-
44300	Telephone	-	1,000	1,000	-
44450	Postage	174	1,000	1,000	1,000
44550	Travel	27	-	-	-
44760	Regulatory	-	1,000	1,000	1,000
44800	Membership and dues	125	2,000	2,000	2,000
45100	Books	423	-	-	-
45150	Furniture & equipment	-	2,000	2,000	2,000
45170	Computer hardware	84	-	-	-
45250	Office supplies	88	3,000	3,000	3,000
45600	A & G overhead	132,573	285,000	285,000	211,200
45621	Employee benefit overhead	142,971	280,300	280,300	212,200
46900	Business meetings	-	1,000	1,000	1,000
	Total Maintenance & Operation	<u>282,234</u>	<u>580,300</u>	<u>580,300</u>	<u>437,400</u>
ALLOCATION OFFSET					
70060	Allocation Offset	(542,182)	(1,055,300)	(1,055,300)	(767,400)
TOTAL		<u>\$ -</u>	<u>\$ -</u>	<u>\$ -</u>	<u>\$ -</u>

**CITY OF GLENDALE
 GLENDALE WATER & POWER DEPARTMENT
 ELECTRIC OPERATION FUND-ELECTRIC SERVICES
 551-931**

		Actual 2009-10	Adopted 2010-11	Revised 2010-11	Adopted 2011-12
SALARIES & BENEFITS					
41100	Salaries	777,727	1,080,100	1,080,100	987,800
41300	Hourly wages	7,549	50,000	50,000	50,000
	Total Salaries & Benefits	785,276	1,130,100	1,130,100	1,037,800
MAINTENANCE & OPERATION					
42800	Auto allowance	5,280	16,000	16,000	16,000
43080	Rent	5,025	6,000	6,000	6,000
43110	Contractual services	13,109	-	-	-
44300	Telephone	718	2,000	2,000	-
44450	Postage	851	4,000	4,000	4,000
44550	Travel	11,873	21,400	21,400	12,200
44650	Training	3,397	1,800	1,800	1,800
44800	Membership and dues	-	1,500	1,500	1,500
45100	Books	145	1,000	1,000	1,000
45250	Office supplies	16,336	25,000	25,000	25,000
45350	General supplies	286	-	-	-
45600	A & G overhead	398,129	654,600	654,600	632,200
45621	Employee benefit overhead	426,185	643,800	643,800	638,700
46900	Business meetings	252	1,000	1,000	1,000
47000	Miscellaneous	77	1,000	1,000	3,000
	Total Maintenance & Operation	881,662	1,379,100	1,379,100	1,342,400
ALLOCATION OFFSET					
70060	Allocation Offset	(1,666,938)	(2,509,200)	(2,509,200)	(2,380,200)
TOTAL		\$ -	\$ -	\$ -	\$ -

**CITY OF GLENDALE
 GLENDALE WATER & POWER DEPARTMENT
 ELECTRIC OPERATION FUND-WATER SERVICES
 551-951**

		Actual 2009-10	Adopted 2010-11	Revised 2010-11	Adopted 2011-12
SALARIES & BENEFITS					
41100	Salaries	563,952	887,000	887,000	877,000
41200	Overtime	-	1,000	1,000	1,000
41300	Hourly wages	2,305	10,000	10,000	10,000
	Total Salaries & Benefits	566,257	898,000	898,000	888,000
MAINTENANCE & OPERATION					
42800	Auto allowance	10,560	11,000	11,000	11,000
43110	Contractual services	342,589	415,000	415,000	325,000
44200	Advertising	-	1,500	1,500	1,500
44250	Data communication	448	-	-	-
44300	Telephone	1,132	2,000	2,000	-
44450	Postage	6,031	3,500	3,500	3,500
44550	Travel	4,396	17,300	17,300	22,100
44650	Training	1,805	10,000	10,000	8,300
44760	Regulatory	-	2,000	2,000	2,000
44800	Membership and dues	-	15,000	15,000	15,000
45050	Periodicals & newspapers	484	500	500	500
45100	Books	373	500	500	500
45150	Furniture & equipment	-	3,000	3,000	3,000
45250	Office supplies	5,625	15,000	15,000	15,000
45350	General supplies	2,413	200	200	200
45450	Printing and graphics	-	2,000	2,000	2,000
45600	A & G overhead	288,791	538,200	538,200	561,300
45620	Material overhead	-	-	-	100
45621	Employee benefit overhead	310,473	524,600	524,600	562,600
46900	Business meetings	1,747	3,000	3,000	3,000
47000	Miscellaneous	149	200	200	2,200
	Total Maintenance & Operation	977,016	1,564,500	1,564,500	1,538,800
ALLOCATION OFFSET					
70060	Allocation Offset	(1,543,273)	(2,462,500)	(2,462,500)	(2,426,800)
TOTAL		\$ -	\$ -	\$ -	\$ -

**CITY OF GLENDALE
 GLENDALE WATER & POWER DEPARTMENT
 ELECTRIC OPERATION FUND-CUSTOMER SERVICES
 551-971**

		Actual 2009-10	Adopted 2010-11	Revised 2010-11	Adopted 2011-12
SALARIES & BENEFITS					
41100	Salaries	3,271,232	3,460,916	3,460,916	3,111,500
41200	Overtime	34,229	39,800	39,800	63,800
41300	Hourly wages	37,330	71,600	71,600	137,400
41600-42600	Benefits	941	-	-	-
	Total Salaries & Benefits	3,343,732	3,572,316	3,572,316	3,312,700
MAINTENANCE & OPERATION					
42800	Auto allowance	18,617	21,700	21,700	22,600
43070	Lease payments	22,246	26,600	26,600	31,600
43080	Rent	4,550	-	-	5,000
43090	Equipment usage	207,109	251,700	251,700	263,600
43110	Contractual services	1,537,006	1,942,400	1,942,400	1,954,400
43150	Cost allocation charge	3,248	-	-	-
44100	Repairs to equipment	305	-	-	-
44120	Repairs to office equip	5,739	-	-	-
44200	Advertising	25,959	35,000	35,000	30,000
44250	Data communication	5,073	500	500	-
44300	Telephone	27,810	30,500	30,500	-
44450	Postage	136,468	110,000	110,000	130,000
44550	Travel	22,602	57,800	57,800	61,200
44600	Laundry & towel service	2,294	2,600	2,600	2,600
44650	Training	9,462	26,300	26,300	26,300
44700	Computer software	10,611	2,500	2,500	2,500
44750	Liability	217	-	-	-
44760	Regulatory	-	2,000	2,000	2,000
44800	Membership and dues	2,792	7,800	7,800	7,300
45050	Periodicals & newspapers	490	1,600	1,600	700
45100	Books	-	1,100	1,100	-
45150	Furniture & equipment	25,391	22,000	22,000	13,500
45170	Computer hardware	41,566	29,300	29,300	29,300
45250	Office supplies	43,430	50,500	50,500	50,000
45300	Small tools	2,672	8,000	8,000	8,000
45350	General supplies	4,738	8,500	8,500	6,500
45400	Reports & publications	718	-	-	-
45450	Printing and graphics	64,158	14,200	14,200	64,200
45600	A & G overhead	1,698,437	2,119,600	2,119,600	1,991,300
45610	Section overhead	677,400	650,900	650,900	676,800
45620	Material overhead	226	1,700	1,700	3,900
45621	Employee benefit overhead	1,817,439	2,051,300	2,051,300	2,009,200
46500	Uncollectible accounts	479,650	500,000	500,000	330,000
46900	Business meetings	6,897	10,500	10,500	10,000
47000	Miscellaneous	80,238	62,800	62,800	127,300
	Total Maintenance & Operation	6,985,559	8,049,400	8,049,400	7,859,800
ALLOCATION OFFSET					
70060	Allocation Offset	(10,329,291)	(11,621,716)	(11,621,716)	(11,172,500)
TOTAL		\$ -	\$ -	\$ -	\$ -

**CITY OF GLENDALE
 GLENDALE WATER & POWER DEPARTMENT
 ELECTRIC OPERATION FUND-GARAGE
 551-993**

		Actual 2009-10	Adopted 2010-11	Revised 2010-11	Adopted 2011-12
MAINTENANCE & OPERATION					
43060	Utilities	12,175	-	-	-
44300	Telephone	1,296	-	-	-
44350	Vehicle maintenance	22,025	-	-	-
44351	Fleet / equip rental charge	2,175,300	2,175,300	2,175,300	2,175,300
	Total Maintenance & Operation	<u>2,210,795</u>	<u>2,175,300</u>	<u>2,175,300</u>	<u>2,175,300</u>
ALLOCATION OFFSET					
70060	Allocation Offset	(2,210,795)	(2,175,300)	(2,175,300)	(2,175,300)
TOTAL		\$ -	\$ -	\$ -	\$ -

**CITY OF GLENDALE
 GLENDALE WATER & POWER DEPARTMENT
 ELECTRIC OPERATION FUND-WAREHOUSE
 551-995**

		Actual 2009-10	Adopted 2010-11	Revised 2010-11	Adopted 2011-12
SALARIES & BENEFITS					
41100	Salaries	230,537	240,000	240,000	241,000
41200	Overtime	-	5,000	5,000	5,000
	Total Salaries & Benefits	230,537	245,000	245,000	246,000
MAINTENANCE & OPERATION					
43050	Repairs-bldgs & grounds	-	500	500	500
43060	Utilities	18,428	17,200	17,200	17,200
44100	Repairs to equipment	-	1,000	1,000	1,000
44120	Repairs to office equip	-	500	500	500
44300	Telephone	2,399	2,700	2,700	-
44400	Janitorial services	-	500	500	500
44450	Postage	-	200	200	200
44550	Travel	9	3,500	3,500	3,500
44650	Training	-	700	700	700
44700	Computer software	-	1,000	1,000	1,000
44800	Membership and dues	-	100	100	300
45150	Furniture & equipment	2,155	2,000	2,000	2,000
45170	Computer hardware	714	7,000	7,000	7,000
45250	Office supplies	1,839	2,000	2,000	2,000
45300	Small tools	-	800	800	800
45350	General supplies	5,423	3,000	3,000	3,000
45600	A & G overhead	117,574	144,000	144,000	154,200
45620	Material overhead	198,481	-	-	-
45621	Employee benefit overhead	126,796	141,600	141,600	154,200
47000	Miscellaneous	5	1,000	1,000	3,700
47010	Discount earned & lost	-	450,000	450,000	450,000
	Total Maintenance & Operation	473,821	779,300	779,300	802,300
ALLOCATION OFFSET					
70060	Allocation Offset	(704,358)	(1,024,300)	(1,024,300)	(1,048,300)
TOTAL		\$ -	\$ -	\$ -	\$ -

**CITY OF GLENDALE
 GLENDALE WATER & POWER DEPARTMENT
 ELECTRIC WORKS REVENUE FUND-ADMINISTRATION
 552-911**

		Actual 2009-10	Adopted 2010-11	Revised 2010-11	Adopted 2011-12
MAINTENANCE & OPERATION					
43110	Contractual services	133,628	525,000	525,000	490,000
45250	Office supplies	204	-	-	-
45600	A & G overhead	847	-	-	-
45610	Section overhead	332	-	-	-
45621	Employee benefit overhead	913	-	-	-
46000	Depreciation	18,129,521	19,200,000	19,200,000	22,200,000
47000	Miscellaneous	-	25,000	25,000	25,000
47050	Interest on bonds	4,970,597	5,810,000	5,810,000	5,800,000
	Total Maintenance & Operation	23,236,042	25,560,000	25,560,000	28,515,000
TRANSFERS					
48010	Transfer-General Fund	19,107,000	19,107,000	19,107,000	21,107,000
	Total Transfers	19,107,000	19,107,000	19,107,000	21,107,000
TOTAL		\$ 42,343,042	\$ 44,667,000	\$ 44,667,000	\$ 49,622,000

**CITY OF GLENDALE
GLENDALE WATER & POWER DEPARTMENT
ELECTRIC WORKS REVENUE FUND-POWER MANAGEMENT
552-921**

		Actual 2009-10	Adopted 2010-11	Revised 2010-11	Adopted 2011-12
SALARIES & BENEFITS					
41100	Salaries	4,587,795	5,214,431	5,214,431	5,017,500
41200	Overtime	472,619	484,100	484,100	234,500
41300	Hourly wages	248,575	156,000	156,000	156,000
	Total Salaries & Benefits	<u>5,308,989</u>	<u>5,854,531</u>	<u>5,854,531</u>	<u>5,408,000</u>
MAINTENANCE & OPERATION					
42800	Auto allowance	412	5,000	5,000	5,000
43050	Repairs-bldgs & grounds	18,173	136,000	136,000	136,000
43060	Utilities	1,000,723	2,082,000	2,082,000	2,082,000
43070	Lease payments	38,481	2,243,000	2,243,000	92,000
43090	Equipment usage	7,827	37,000	37,000	35,000
43110	Contractual services	2,905,451	2,898,000	2,898,000	3,237,000
43111	Construction services	-	200,000	200,000	100,000
44100	Repairs to equipment	1,494,301	1,355,000	1,355,000	1,405,000
44120	Repairs to office equip	209	1,000	1,000	1,000
44200	Advertising	-	2,000	2,000	2,000
44250	Data communication	2,960	2,000	2,000	-
44300	Telephone	32,067	35,000	35,000	-
44350	Vehicle maintenance	-	5,000	5,000	5,000
44400	Janitorial services	26,403	35,000	35,000	35,000
44450	Postage	1,400	19,000	19,000	7,000
44550	Travel	47,405	33,000	33,000	35,300
44600	Laundry & towel service	7,398	11,000	11,000	11,000
44650	Training	43,079	39,000	39,000	39,000
44700	Computer software	89,301	23,000	23,000	23,000
44750	Liability	775	-	-	-
44760	Regulatory	145,962	201,000	201,000	302,000
44800	Membership and dues	20,660	25,000	25,000	25,000
45050	Periodicals & newspapers	10,119	5,000	5,000	5,000
45100	Books	1,606	1,000	1,000	1,000
45150	Furniture & equipment	20,472	15,000	15,000	15,000
45170	Computer hardware	29,483	35,000	35,000	35,000
45200	Maps and blue prints	1,433	5,000	5,000	5,000
45250	Office supplies	4,147	9,000	9,000	9,000
45300	Small tools	28,615	19,300	19,300	19,300
45350	General supplies	671,614	676,000	676,000	601,000
45400	Reports & publications	-	2,000	2,000	2,000
45450	Printing and graphics	-	4,000	4,000	4,000
45501	Fuel-landfill gas	6,653,984	4,864,300	4,864,300	7,354,400
45502	Fuel-natural gas	20,757,864	34,232,000	34,232,000	22,927,700
45510	Purchased power	66,494,701	83,850,000	83,850,000	81,751,000
45511	Hedging costs	3,369,926	2,620,000	2,620,000	2,620,000
45600	A & G overhead	2,288,796	3,222,400	3,222,400	3,211,300
45610	Section overhead	541,698	1,029,400	1,029,400	744,000
45620	Material overhead	9,193	176,600	176,600	167,600
45621	Employee benefit overhead	2,388,261	3,097,000	3,097,000	3,231,600
46001	Gas depletion	284,829	420,000	420,000	298,000
46900	Business meetings	3,231	3,000	3,000	3,000
47000	Miscellaneous	16,977	36,000	36,000	68,000
47010	Discount earned & lost	(97)	-	-	-
	Total Maintenance & Operation	<u>109,459,840</u>	<u>143,709,000</u>	<u>143,709,000</u>	<u>130,650,200</u>
TOTAL		\$ 114,768,830	\$ 149,563,531	\$ 149,563,531	\$ 136,058,200

**CITY OF GLENDALE
 GLENDALE WATER & POWER DEPARTMENT
 ELECTRIC WORKS REVENUE FUND-ELECTRIC SERVICES
 552-931**

		Actual 2009-10	Adopted 2010-11	Revised 2010-11	Adopted 2011-12
SALARIES & BENEFITS					
41100	Salaries	7,114,360	7,320,100	7,320,100	7,089,000
41200	Overtime	529,572	456,900	456,900	268,200
41300	Hourly wages	198,844	120,000	120,000	150,400
	Total Salaries & Benefits	7,842,776	7,897,000	7,897,000	7,507,600
MAINTENANCE & OPERATION					
42800	Auto allowance	1,727	500	500	500
43050	Repairs-bldgs & grounds	48,265	49,000	49,000	141,000
43060	Utilities	464,558	416,000	416,000	447,000
43070	Lease payments	77,560	75,000	75,000	75,000
43080	Rent	54,022	55,000	55,000	60,000
43090	Equipment usage	1,152,775	436,700	436,700	500,000
43110	Contractual services	1,175,971	2,347,900	2,347,900	3,290,400
43111	Construction services	-	75,000	75,000	-
44100	Repairs to equipment	67,496	2,500	2,500	2,500
44120	Repairs to office equip	667	500	500	2,000
44250	Data communication	14,259	-	-	-
44300	Telephone	76,425	72,700	72,700	-
44350	Vehicle maintenance	48	500	500	-
44400	Janitorial services	9,792	7,000	7,000	10,000
44450	Postage	1,060	1,000	1,000	1,000
44550	Travel	25,683	61,000	61,000	70,700
44600	Laundry & towel service	213	600	600	600
44650	Training	54,499	38,900	38,900	35,000
44700	Computer software	21,314	6,000	6,000	6,000
44750	Liability	817	-	-	-
44760	Regulatory	1,692	16,000	16,000	16,000
44800	Membership and dues	8,465	25,000	25,000	15,000
45050	Periodicals & newspapers	268	200	200	500
45100	Books	65	1,000	1,000	1,000
45150	Furniture & equipment	39,876	5,000	5,000	10,500
45170	Computer hardware	36,866	15,000	15,000	15,000
45200	Maps and blue prints	730	-	-	-
45250	Office supplies	37,602	20,500	20,500	18,500
45300	Small tools	93,437	100,000	100,000	125,000
45350	General supplies	811,674	253,300	253,300	488,100
45450	Printing and graphics	258	1,000	1,000	700
45500	Fuel-oil	24	-	-	-
45600	A & G overhead	3,480,298	4,324,600	4,324,600	4,265,000
45610	Section overhead	832,630	1,638,900	1,638,900	1,460,700
45620	Material overhead	211,100	215,000	215,000	165,800
45621	Employee benefit overhead	4,055,579	3,539,300	3,539,300	4,214,400
45622	Customer services allocation	(15)	-	-	-
45623	General plant allocation	(1)	-	-	-
46900	Business meetings	5,545	2,700	2,700	2,500
47000	Miscellaneous	17,893	5,200	5,200	86,200
47010	Discount earned & lost	(1)	-	-	-
	Total Maintenance & Operation	12,881,135	13,808,500	13,808,500	15,526,600
TOTAL		\$ 20,723,911	\$ 21,705,500	\$ 21,705,500	\$ 23,034,200

CITY OF GLENDALE
GLENDALE WATER & POWER DEPARTMENT
ELECTRIC WORKS REVENUE FUND-CUSTOMER SERVICES
552-971

		Actual 2009-10	Adopted 2010-11	Revised 2010-11	Adopted 2011-12
MAINTENANCE & OPERATION					
45610	Section overhead	(67,070)	-	-	-
45622	Customer services allocation	7,226,209	7,814,400	7,814,400	5,325,300
	Total Maintenance & Operation	7,159,139	7,814,400	7,814,400	5,325,300
TOTAL		\$ 7,159,139	\$ 7,814,400	\$ 7,814,400	\$ 5,325,300

**CITY OF GLENDALE
 GLENDALE WATER & POWER DEPARTMENT
 ELECTRIC DEPRECIATION FUND-ADMINISTRATION
 553-911**

		Actual 2009-10	Adopted 2010-11	Revised 2010-11	Adopted 2011-12
MAINTENANCE & OPERATION					
45623	General plant allocation	1,828,575	4,237,500	4,567,500	3,674,000
	Total Maintenance & Operation	<u>1,828,575</u>	<u>4,237,500</u>	<u>4,567,500</u>	<u>3,674,000</u>
CAPITAL PROJECTS					
59999	Asset capitalization	(36,739,439)	-	-	-
	Total Capital Projects	<u>(36,739,439)</u>	<u>-</u>	<u>-</u>	<u>-</u>
TOTAL		<u>\$ (34,910,865)</u>	<u>\$ 4,237,500</u>	<u>\$ 4,567,500</u>	<u>\$ 3,674,000</u>

**CITY OF GLENDALE
 GLENDALE WATER & POWER DEPARTMENT
 ELECTRIC DEPRECIATION FUND-POWER MANAGEMENT
 553-921**

		Actual 2009-10	Adopted 2010-11	Revised 2010-11	Adopted 2011-12
SALARIES & BENEFITS					
41100	Salaries	60,426	144,000	144,000	179,400
	Total Salaries & Benefits	<u>60,426</u>	<u>144,000</u>	<u>144,000</u>	<u>179,400</u>
MAINTENANCE & OPERATION					
43110	Contractual services	602,328	350,000	350,000	850,000
43111	Construction services	793,183	3,511,700	6,628,200	4,338,100
44100	Repairs to equipment	3,690	-	-	-
44760	Regulatory	2,016	-	-	-
45170	Computer hardware	1,880	-	-	-
45200	Maps and blue prints	149	-	-	-
45250	Office supplies	127	-	-	-
45350	General supplies	167,081	-	-	-
45600	A & G overhead	30,817	86,400	86,400	114,700
45610	Section overhead	7,855	25,900	25,900	23,400
45621	Employee benefit overhead	33,234	85,100	85,100	114,700
47050	Interest on bonds	-	-	-	500,000
47059	Capitalized interest -water 08	133,998	-	-	-
	Total Maintenance & Operation	<u>1,776,359</u>	<u>4,059,100</u>	<u>7,175,600</u>	<u>5,940,900</u>
CAPITAL OUTLAY					
51000	Capital outlay	6,699	15,000	15,000	60,000
	Total Capital Outlay	<u>6,699</u>	<u>15,000</u>	<u>15,000</u>	<u>60,000</u>
CAPITAL PROJECTS					
51250	Equipment	675,884	264,500	264,500	491,000
51800	Mobile equipment	-	62,000	62,000	145,000
	Total Capital Projects	<u>675,884</u>	<u>326,500</u>	<u>326,500</u>	<u>636,000</u>
TOTAL		<u>\$ 2,519,368</u>	<u>\$ 4,544,600</u>	<u>\$ 7,661,100</u>	<u>\$ 6,816,300</u>

**CITY OF GLENDALE
 GLENDALE WATER & POWER DEPARTMENT
 ELECTRIC DEPRECIATION FUND-ELECTRIC SERVICES
 553-931**

		Actual 2009-10	Adopted 2010-11	Revised 2010-11	Adopted 2011-12
SALARIES & BENEFITS					
41100	Salaries	3,950,354	4,601,424	4,601,424	5,973,800
41200	Overtime	390,395	137,700	137,700	121,900
41300	Hourly wages	111,230	24,000	24,000	171,700
	Total Salaries & Benefits	4,451,980	4,763,124	4,763,124	6,267,400
MAINTENANCE & OPERATION					
42800	Auto allowance	621	-	-	-
43070	Lease payments	12,765	-	-	-
43080	Rent	3,580	-	-	-
43090	Equipment usage	938,922	1,064,600	1,064,600	996,100
43110	Contractual services	16,934,296	23,270,900	28,270,900	9,032,200
43111	Construction services	273,388	420,000	420,000	5,072,000
44100	Repairs to equipment	2,830	-	-	-
44120	Repairs to office equip	110	-	-	-
44200	Advertising	1,800	-	-	-
44300	Telephone	1,158	-	-	-
44450	Postage	2,029	-	-	-
44550	Travel	3,918	-	-	-
44650	Training	12	-	-	-
44700	Computer software	329,491	-	-	-
44750	Liability	82,709	-	-	-
44760	Regulatory	73,946	13,000	13,000	8,000
45100	Books	28	-	-	-
45150	Furniture & equipment	152,657	3,500	3,500	671,500
45170	Computer hardware	99,178	-	-	-
45250	Office supplies	575	15,000	15,000	-
45300	Small tools	75,369	-	-	-
45350	General supplies	2,563,874	4,256,100	4,256,100	3,337,900
45450	Printing and graphics	-	500	500	500
45600	A & G overhead	2,060,873	2,777,600	2,777,600	3,823,200
45610	Section overhead	802,994	931,275	931,275	1,075,500
45620	Material overhead	284,916	468,300	468,300	901,400
45621	Employee benefit overhead	2,175,666	2,694,725	2,694,725	3,845,600
46900	Business meetings	178	-	-	-
47000	Miscellaneous	3,220	8,000	8,000	60,000
47010	Discount earned & lost	(3)	-	-	-
47050	Interest on bonds	-	3,000,000	3,000,000	2,500,000
47059	Capitalized interest -water 08	1,005,467	-	-	-
	Total Maintenance & Operation	27,886,565	38,923,500	43,923,500	31,323,900
CAPITAL OUTLAY					
51000	Capital outlay	731	244,980	244,980	736,800
	Total Capital Outlay	731	244,980	244,980	736,800
CAPITAL PROJECTS					
51250	Equipment	52,222	67,900	67,900	10,000
51800	Mobile equipment	-	1,278,000	1,278,000	387,000
	Total Capital Projects	52,222	1,345,900	1,345,900	397,000
TOTAL		\$ 32,391,497	\$ 45,277,504	\$ 50,277,504	\$ 38,725,100

CITY OF GLENDALE
GLENDALE WATER & POWER DEPARTMENT
ELECTRIC SCAQMD STATE SALES FUND
554-921

		Actual 2009-10	Adopted 2010-11	Revised 2010-11	Adopted 2011-12
<hr/>					
MAINTENANCE & OPERATION					
47000	Miscellaneous	-	25,000	25,000	-
	Total Maintenance & Operation	-	25,000	25,000	-
		<hr/>			
TOTAL		\$ -	\$ 25,000	\$ 25,000	\$ -
		<hr/> <hr/>			

**CITY OF GLENDALE
 GLENDALE WATER & POWER DEPARTMENT
 WATER WORKS REVENUE FUND-ADMINISTRATION
 572-911**

		Actual 2009-10	Adopted 2010-11	Revised 2010-11	Adopted 2011-12
MAINTENANCE & OPERATION					
43110	Contractual services	-	300,000	300,000	250,000
44750	Liability	-	-	-	1,000,000
45150	Furniture & equipment	27,766	-	-	-
46000	Depreciation	3,229,309	3,800,000	3,800,000	4,000,000
47050	Interest on bonds	1,496,809	2,325,000	2,325,000	2,325,000
	Total Maintenance & Operation	4,753,883	6,425,000	6,425,000	7,575,000
TRANSFERS					
48010	Transfer-General Fund	4,160,000	4,160,000	4,160,000	-
	Total Transfers	4,160,000	4,160,000	4,160,000	-
TOTAL		\$ 8,913,883	\$ 10,585,000	\$ 10,585,000	\$ 7,575,000

**CITY OF GLENDALE
GLENDALE WATER & POWER DEPARTMENT
WATER WORKS REVENUE FUND-WATER SERVICES
572-951**

		Actual 2009-10	Adopted 2010-11	Revised 2010-11	Adopted 2011-12
SALARIES & BENEFITS					
41100	Salaries	3,152,284	3,001,900	3,001,900	2,854,500
41200	Overtime	253,730	144,900	144,900	131,400
41300	Hourly wages	109,485	58,000	58,000	58,000
	Total Salaries & Benefits	3,515,499	3,204,800	3,204,800	3,043,900
MAINTENANCE & OPERATION					
42800	Auto allowance	110	1,000	1,000	1,000
42900	Uniform allowance	7,432	15,000	15,000	2,800
43050	Repairs-bldgs & grounds	160,733	132,500	132,500	346,500
43060	Utilities	2,696,810	2,735,300	2,735,300	2,858,300
43070	Lease payments	4,399	5,500	5,500	5,500
43080	Rent	1,378	18,300	18,300	12,300
43090	Equipment usage	570,426	236,700	236,700	296,800
43110	Contractual services	1,569,848	1,552,500	1,552,500	1,713,700
43111	Construction services	8,500	40,000	40,000	265,000
43150	Cost allocation charge	2,000	-	-	600,000
44100	Repairs to equipment	114,576	69,000	69,000	240,000
44120	Repairs to office equip	2,173	2,500	2,500	4,000
44250	Data communication	6,431	-	-	-
44300	Telephone	46,406	34,900	34,900	-
44350	Vehicle maintenance	-	2,000	2,000	2,000
44400	Janitorial services	7,422	8,500	8,500	8,500
44450	Postage	1,348	2,600	2,600	6,600
44550	Travel	6,024	21,600	21,600	39,100
44650	Training	32,715	75,000	75,000	68,100
44700	Computer software	11,852	11,500	11,500	15,500
44750	Liability	379	-	-	-
44760	Regulatory	139,267	112,700	112,700	183,400
44800	Membership and dues	52,913	28,300	28,300	41,800
45050	Periodicals & newspapers	478	800	800	800
45100	Books	1,210	700	700	2,000
45150	Furniture & equipment	39,291	11,000	11,000	23,500
45170	Computer hardware	13,481	10,200	10,200	26,000
45200	Maps and blue prints	138	500	500	500
45250	Office supplies	8,893	7,100	7,100	9,500
45300	Small tools	42,513	15,600	15,600	53,000
45350	General supplies	599,091	320,500	320,500	523,100
45400	Reports & publications	573	800	800	1,500
45450	Printing and graphics	2,824	12,500	12,500	28,700
45500	Fuel-oil	292	-	-	-
45520	Purchased water	12,437,850	12,711,000	12,711,000	15,084,000
45600	A & G overhead	1,546,040	1,836,000	1,836,000	1,826,900
45610	Section overhead	1,170,356	1,522,500	1,522,500	1,749,300
45620	Material overhead	73,707	119,100	119,100	155,900
45621	Employee benefit overhead	1,749,589	1,778,700	1,778,700	1,834,400
46900	Business meetings	2,761	4,500	4,500	6,500
47000	Miscellaneous	62,798	31,500	31,500	99,500
47010	Discount earned & lost	(65)	-	-	-
	Total Maintenance & Operation	23,194,964	23,488,400	23,488,400	28,136,000
TOTAL		\$ 26,710,463	\$ 26,693,200	\$ 26,693,200	\$ 31,179,900

**CITY OF GLENDALE
 GLENDALE WATER & POWER DEPARTMENT
 WATER WORKS REVENUE FUND-CUSTOMER SERVICES
 572-971**

		Actual 2009-10	Adopted 2010-11	Revised 2010-11	Adopted 2011-12
MAINTENANCE & OPERATION					
45610	Section overhead	(22,357)	-	-	-
45622	Customer services allocation	2,408,741	3,012,200	3,012,200	5,012,900
	Total Maintenance & Operation	2,386,384	3,012,200	3,012,200	5,012,900
TOTAL		\$ 2,386,384	\$ 3,012,200	\$ 3,012,200	\$ 5,012,900

**CITY OF GLENDALE
 GLENDALE WATER & POWER DEPARTMENT
 WATER DEPRECIATION FUND-ADMINISTRATION
 573-911**

		Actual 2009-10	Adopted 2010-11	Revised 2010-11	Adopted 2011-12
MAINTENANCE & OPERATION					
45623	General plant allocation	609,525	1,412,500	1,522,500	1,224,600
	Total Maintenance & Operation	609,525	1,412,500	1,522,500	1,224,600
CAPITAL PROJECTS					
59999	Asset capitalization	(24,679,181)	-	-	-
	Total Capital Projects	(24,679,181)	-	-	-
TOTAL		\$ (24,069,656)	\$ 1,412,500	\$ 1,522,500	\$ 1,224,600

**CITY OF GLENDALE
GLENDALE WATER & POWER DEPARTMENT
WATER DEPRECIATION FUND-WATER SERVICES
573-951**

		Actual 2009-10	Adopted 2010-11	Revised 2010-11	Adopted 2011-12
SALARIES & BENEFITS					
41100	Salaries	822,453	1,240,342	1,240,342	1,209,300
41200	Overtime	34,873	58,600	58,600	14,000
41300	Hourly wages	136,159	38,200	38,200	2,700
	Total Salaries & Benefits	993,485	1,337,142	1,337,142	1,226,000
MAINTENANCE & OPERATION					
42800	Auto allowance	191	-	-	-
43050	Repairs-bldgs & grounds	39	-	-	-
43070	Lease payments	26,363	1,000	1,000	1,000
43080	Rent	22,234	-	-	-
43090	Equipment usage	106,090	45,400	45,400	229,400
43110	Contractual services	8,864,223	14,859,300	14,859,300	7,092,900
43111	Construction services	10,273,117	1,717,500	3,317,500	9,524,000
44100	Repairs to equipment	19,010	15,000	15,000	15,200
44120	Repairs to office equip	6,380	-	-	-
44200	Advertising	-	2,000	2,000	2,000
44250	Data communication	474	-	-	-
44300	Telephone	42	1,000	1,000	-
44450	Postage	2,350	1,000	1,000	1,000
44550	Travel	35	-	-	-
44650	Training	790	1,000	1,000	1,000
44700	Computer software	48,680	3,000	3,000	53,000
44750	Liability	11	-	-	-
44760	Regulatory	20,909	60,400	60,400	13,500
45100	Books	52	1,000	1,000	1,000
45150	Furniture & equipment	26,918	8,000	8,000	9,500
45170	Computer hardware	49,031	40,000	40,000	5,000
45200	Maps and blue prints	428	1,000	1,000	1,000
45250	Office supplies	55	1,000	1,000	1,000
45300	Small tools	944	-	-	-
45350	General supplies	641,544	192,400	192,400	360,100
45450	Printing and graphics	-	63,200	63,200	5,100
45600	A & G overhead	444,024	771,800	771,800	774,100
45610	Section overhead	394,091	960,325	960,325	653,200
45620	Material overhead	100,156	21,200	21,200	97,300
45621	Employee benefit overhead	466,169	836,675	836,675	774,500
46900	Business meetings	174	1,000	1,000	1,000
47000	Miscellaneous	403,038	5,000	5,000	6,000
47010	Discount earned & lost	(500)	-	-	-
47050	Interest on bonds	-	2,500,000	2,500,000	2,500,000
47059	Capitalized interest -water 08	940,759	-	-	-
	Total Maintenance & Operation	22,857,820	22,109,200	23,709,200	22,121,800
CAPITAL OUTLAY					
51000	Capital outlay	731	45,000	45,000	63,500
	Total Capital Outlay	731	45,000	45,000	63,500
CAPITAL PROJECTS					
51100	Land and land rights	9,020	40,000	40,000	150,000
51250	Equipment	143,979	260,000	260,000	14,000

CITY OF GLENDALE
GLENDALE WATER & POWER DEPARTMENT
WATER DEPRECIATION FUND-WATER SERVICES
573-951

		Actual 2009-10	Adopted 2010-11	Revised 2010-11	Adopted 2011-12
51800	Mobile equipment	64,621	352,000	452,000	115,000
	Total Capital Projects	217,620	652,000	752,000	279,000
TOTAL		\$ 24,069,656	\$ 24,143,342	\$ 25,843,342	\$ 23,690,300

**CITY OF GLENDALE
CAPITAL IMPROVEMENT PROGRAM - GWP
SUMMARY OF PROJECTS**

Project	FY 11-12 Adopted	FY 12-13 Projected	FY 13-14 Projected	FY 14-15 Projected	FY 15-16 Projected	Future Years FY 16 - 21	Estimated Project Total
GLENDALE WATER & POWER - ELECTRIC UTILITY FUND 553							
Grayson Power Plant Steam Units	\$ 4,746,600	\$ 3,427,300	\$ 1,014,300	\$ 2,129,000	\$ 1,100,000	\$ 11,300,000	\$ 23,717,200
Grayson Power Plant Gas Units	702,200	2,172,500	4,078,300	3,389,300	1,286,600	85,000,000	96,628,900
Grayson Power Plant BOP & Auxillary	586,300	103,000	636,600	2,151,900	923,600	4,400,000	8,801,400
Transmission Capital Improvements	250,000	257,500	265,200	273,200	281,400	1,300,000	2,627,300
Production Plant Sub-Total	6,285,100	5,960,300	5,994,400	7,943,400	3,591,600	102,000,000	131,774,800
Distribution System Expansion	3,451,800	5,955,500	3,341,900	5,992,800	1,688,500	20,200,000	40,630,500
Distribution System Reliability Improvements	6,221,300	3,293,600	9,093,000	8,016,900	9,182,600	36,000,000	71,807,400
Distribution System Modification & Replacements	6,695,700	10,179,300	4,240,200	3,852,200	8,778,200	32,000,000	65,745,600
Electric Meters and Services	3,183,400	3,038,100	3,104,200	3,198,300	3,295,600	10,000,000	25,819,600
Distribution System OH / UG Conversions	-	-	-	-	-	-	-
Distribution System 4 to 12kV Conversions	911,800	9,597,300	1,519,700	-	-	-	12,028,800
Streetlight System Capital	310,600	568,200	585,300	602,800	616,900	2,700,000	5,383,800
Smart Grid Infrastructure	15,283,200	10,075,500	7,700,900	7,890,100	6,321,700	30,000,000	77,271,400
Transmission and Distribution Plant Sub-Total	36,057,800	42,707,500	29,585,200	29,553,100	29,883,500	130,900,000	298,687,100
Electric General Plant Capital	3,198,500	782,800	783,200	693,200	545,100	5,000,000	11,002,800
General Plant Capital - Common Facilities	3,674,000	277,200	99,500	57,400	206,800	2,000,000	6,314,900
ELECTRIC UTILITY TOTAL	\$ 49,215,400	\$ 49,727,800	\$ 36,462,300	\$ 38,247,100	\$ 34,227,000	\$ 239,900,000	\$ 447,779,600
GLENDALE WATER & POWER - WATER UTILITY FUND 573							
Public Water Source Improvements	\$ 6,204,300	\$ 2,267,800	\$ 2,206,400	\$ 1,002,300	\$ 1,043,400	\$ 7,981,800	\$ 20,706,000
Water Pumping Plant Improvements	5,380,600	3,146,800	591,000	28,100	113,900	2,820,000	12,080,400
Water Quality and Treatment Plant Improvements	596,800	1,057,000	899,000	452,200	380,400	1,043,000	4,428,400
Water Reservoir and Tank Improvements	966,100	1,051,400	1,136,100	408,500	857,400	1,653,200	6,072,700
Water Mains, Hydrants, Services & Meters	4,709,500	7,012,200	11,559,800	7,685,300	5,448,900	5,932,600	42,348,300
Smart Grid Infrastructure	5,400,000	-	-	-	-	-	5,400,000
Recycled Water Reservoir, Tanks and Mains	86,200	119,600	123,200	694,800	130,500	1,004,300	2,158,600
General Plant Capital	346,800	103,000	96,200	104,700	147,100	707,800	1,505,600
General Plant Capital - Common Facilities	1,224,600	92,400	33,100	19,100	68,900	1,338,000	2,776,100
WATER UTILITY TOTAL	\$ 24,914,900	\$ 14,850,200	\$ 16,644,800	\$ 10,395,000	\$ 8,190,500	\$ 22,480,700	\$ 97,476,100
GWP PROJECTS TOTAL	\$ 74,130,300	\$ 64,578,000	\$ 53,107,100	\$ 48,642,100	\$ 42,417,500	\$ 262,380,700	\$ 545,255,700

**CITY OF GLENDALE
GLENDALE WATER & POWER
Personnel Classification Detail**

Classification	Actual 2009-10	Budget 2010-11	Revised Budget 2010-11	Adopted Budget 2011-12
<u>Salaried Employees</u>				
Accountant II	1.00	-	-	-
Administrative Analyst	6.00	6.00	5.00	5.00
Administrative Assistant	4.00	4.00	4.00	5.00
Administrative Associate	2.00	2.00	-	
Assistant Engineering Technician	3.00	3.00	2.00	2.00
Assistant General Manager	5.00	5.00	5.00	5.00
Building Repairer - Water	2.00	2.00	2.00	2.00
Business Account Representative	2.00	2.00	2.00	2.00
Business Transformation Manager	-	-	1.00	
Business Transformer & Marketing Administrator	-	-	1.00	1.00
Civil Engineer I	1.00	1.00	1.00	3.00
Civil Engineer II	2.00	2.00	2.00	2.00
Civil Engineering Assistant	3.00	3.00	3.00	1.00
Civil Engineering Associate	3.00	3.00	3.00	3.00
Customer Service Administrator	1.00	1.00	1.00	1.00
Customer Service Field Supervisor	1.00	1.00	1.00	1.00
Customer Service Field Technician	6.00	6.00	6.00	6.00
Customer Service Representative	1.00	1.00	1.00	1.00
Customer Service Utility Repr. I	34.00	34.00	34.00	34.00
Customer Service Utility Supervisor	3.00	3.00	3.00	3.00
Deputy City Attorney	1.00	-	-	
Electrical Engineer I	4.00	4.00	5.00	5.00
Electrical Engineer II	1.00	1.00	1.00	1.00
Electrical Engineering Assistant	4.00	4.00	3.00	3.00
Electrical Engineering Associate	2.00	2.00	2.00	2.00
Electrical Helper	5.00	5.00	5.00	4.00
Electrical Line Mech Supervisor I	12.00	12.00	12.00	11.00
Electrical Line Mechanic	14.00	14.00	15.00	13.00
Electrical Line Mechanic Apprentice	11.00	11.00	10.00	14.00
Electrical Line Mechanic Supervisor II	5.00	5.00	5.00	5.00
Electrical Mechanic Assistant	4.00	4.00	4.00	4.00
Electrical Mechanic Supervisor II	1.00	1.00	1.00	1.00
Electrical Operation Supervisor	2.00	2.00	2.00	2.00
Electrical Service Planner	5.00	5.00	5.00	5.00
Electrical Services Administrator	-	-		
Electrical Superintendent	1.00	1.00	1.00	1.00
Electrical System Dispatcher	5.00	5.00	5.00	5.00
Electrical System Dispatcher Supervisor	1.00	1.00	1.00	1.00
Electrical Test Supervisor	1.00	1.00	1.00	1.00
Electrical Test Technician I	3.00	3.00	3.00	3.00
Electrical Test Technician II	6.00	6.00	6.00	6.00
Energy Marketer/Trader	1.00	1.00	1.00	1.00
Energy Trading Manger	1.00	1.00	1.00	1.00
Engineering Aide	1.00	1.00	1.00	1.00
Engineering Technician	4.00	4.00	6.00	6.00

**CITY OF GLENDALE
GLENDALE WATER & POWER
Personnel Classification Detail**

Classification	Actual 2009-10	Budget 2010-11	Revised Budget 2010-11	Adopted Budget 2011-12
Equipment Operator II	1.00	1.00	1.00	-
Equipment Welder	1.00	1.00	1.00	1.00
Executive Analyst	1.00	1.00	1.00	1.00
Facilities Maintenance Supervisor	1.00	1.00	1.00	1.00
General Manager-GWP	1.00	1.00	1.00	1.00
Housing Technician	0.65	-	-	-
Human Resources Analyst II	1.00	-	-	-
Information Services Administrator	1.00	1.00	1.00	1.00
Information Services Project Manager	1.00	1.00	2.00	2.00
Integrated Resources Plan Administrator	-	-	1.00	1.00
Internal Auditor	1.00	-	-	-
IT Applications Analyst	1.00	1.00	-	-
IT Applications Specialist	1.00	1.00	1.00	1.00
Legal Executive Secretary	0.50	-	-	-
Line Clearance Forestry Supervisor I	3.00	3.00	3.00	3.00
Maintenance Worker	3.00	3.00	3.00	-
Mechanical Engineer I	1.00	1.00	-	-
Mechanical Engineer II	1.00	1.00	1.00	1.00
Mechanical Engineering Assistant	1.00	1.00	2.00	2.00
Meter Reader	8.00	8.00	7.00	7.00
Office Services Specialist II	5.00	5.00	4.00	4.00
Office Services Supervisor	1.00	1.00	2.00	2.00
Office Services Supervisor (Steno)	1.00	1.00	-	-
Office Specialist I	-	-	-	1.00
PC Specialist	4.00	1.00	1.00	1.00
Power Contracts Manager	-	-	1.00	1.00
Power Line Truck Operator	2.00	2.00	2.00	2.00
Power Planning Manager	-	-	1.00	1.00
Power Plant Auxiliary Operator	4.00	4.00	4.00	4.00
Power Plant Control Operator	13.00	13.00	12.00	12.00
Power Plant Control Operator Apprentice	10.00	10.00	9.00	8.00
Power Plant Inst & Cntrl Supervisor	1.00	1.00	1.00	1.00
Power Plant Maintenance Supervisor	1.00	1.00	1.00	1.00
Power Plant Mechanic	7.00	7.00	8.00	8.00
Power Plant Mechanic Apprentice	4.00	4.00	3.00	3.00
Power Plant Mechanic Supervisor	1.00	1.00	1.00	1.00
Power Plant Operation Supervisor	1.00	1.00	1.00	1.00
Power Plant Operator	2.00	2.00	2.00	2.00
Power Plant Shift Supervisor	3.00	3.00	4.00	4.00
Power Plant Superintendent	1.00	1.00	-	-
Power Plant Technician	1.00	1.00	2.00	2.00
Power Systems Analyst	3.00	3.00	3.00	3.00
Principal Civil Engineer	1.00	1.00	1.00	1.00
Principal Electrical Engineer	3.00	3.00	2.00	2.00
Principal Engineering Technician	-	-	-	1.00
Principal Mechanical Engineer	1.00	1.00	1.00	1.00
Principal Water Quality Specialist	1.00	1.00	1.00	1.00

**CITY OF GLENDALE
GLENDALE WATER & POWER
Personnel Classification Detail**

Classification	Actual 2009-10	Budget 2010-11	Revised Budget 2010-11	Adopted Budget 2011-12
Project Manager	3.00	3.00	3.00	3.00
Public Benefits Charge Coordinator	2.00	2.00	4.00	4.00
Public Benefits Charge Marketing Manager	1.00	1.00	-	-
Resource Efficiency Advisor	1.00	1.00	1.00	1.00
Revenue Protection Coordinator	-	-	1.00	1.00
Sr. Administrative Analyst	-	-	1.00	1.00
Sr. Assistant City Attorney	1.00	-	-	-
Sr. Buyer	1.00	-	-	-
Sr. Civil Engineer	2.00	2.00	2.00	2.00
Sr. Customer Srvc. Field Tech.	1.00	1.00	1.00	1.00
Sr. Customer Srvc. Utility Rep	5.00	5.00	6.00	6.00
Sr. Electrical Engineer	2.00	2.00	2.00	1.00
Sr. Electrical Srvc. Planner	2.00	2.00	2.00	2.00
Sr. Electrical System Dispatcher	5.00	5.00	5.00	5.00
Sr. Electrical Test Technician	4.00	4.00	4.00	4.00
Sr. Engineering Technician	2.00	2.00	2.00	2.00
Sr. Environmental Program Specialist	2.00	2.00	2.00	2.00
Sr. IT Application Specialist	2.00	2.00	2.00	2.00
Sr. Mechanical Engineer	1.00	1.00	-	-
Sr. Meter Reader	1.00	1.00	1.00	1.00
Sr. Office Services Specialist	5.00	5.00	6.00	6.00
Sr. Office Specialist	3.00	3.00	5.00	5.00
Sr. Power Plant Mechanic	2.00	2.00	2.00	2.00
Sr. Power Plant Technician	2.00	2.00	2.00	2.00
Sr. Project Manager	1.00	1.00	1.00	1.00
Sr. Water Facilities Operator	1.00	1.00	2.00	2.00
Sr. Water Quality Specialist	-	-	1.00	1.00
Sr. Water Quality Technician	-	-	1.00	1.00
Sr. Water System Mechanic	3.00	3.00	3.00	3.00
Station Electrician	2.00	2.00	2.00	2.00
Station Electrician Superv. I	1.00	1.00	1.00	1.00
Station Electrician/Operator	6.00	6.00	7.00	7.00
Station Electrician/Operator Apprentice	3.00	3.00	2.00	2.00
Station Electrician/Operator Supervisor I	5.00	5.00	5.00	5.00
Station Electrician/Operator Supervisor II	1.00	1.00	1.00	1.00
Storekeeper	4.00	4.00	4.00	4.00
Stores Supervisor	1.00	1.00	1.00	1.00
Systems Analyst	2.00	2.00	3.00	3.00
Technical Staff Analyst	1.00	1.00	1.00	1.00
Transformer Shop Supervisor	1.00	1.00	1.00	1.00
Transformer Shop Technician	1.00	1.00	1.00	1.00
Underground Distribution Construction Mechanic I	10.00	10.00	10.00	10.00
Underground Distribution Construction Mechanic II	3.00	3.00	3.00	3.00
Underground Distribution Construction Supervisor I	3.00	3.00	3.00	3.00
Underground Distribution Construction Supervisor II	1.00	1.00	1.00	1.00
Utility Equipment Operator II	-	-	-	1.00
Utility Maintenance Worker	-	-	-	3.00

**CITY OF GLENDALE
GLENDALE WATER & POWER
Personnel Classification Detail**

Classification	Actual 2009-10	Budget 2010-11	Revised Budget 2010-11	Adopted Budget 2011-12
Utility Welder	1.00	1.00	1.00	1.00
Water Facilities Operator	3.00	3.00	2.00	2.00
Water Meter Repairer	1.00	1.00	2.00	2.00
Water Quality Specialist	1.00	1.00	-	-
Water Quality Technician	2.00	2.00	2.00	2.00
Water Superintendent	2.00	2.00	2.00	2.00
Water System Apprentice	3.00	3.00	3.00	1.00
Water System Equipment Operator	3.00	3.00	3.00	3.00
Water System Helper	5.00	5.00	4.00	6.00
Water System Mechanic	10.00	10.00	10.00	10.00
Water System Supervisor I	1.00	1.00	1.00	2.00
Water System Supervisor II	8.00	8.00	8.00	8.00
Water Systems Supervisor III	2.00	2.00	2.00	1.00
Yard Attendant	1.00	1.00	1.00	1.00
Total Salaried Employees	<u>418.15</u>	<u>408.00</u>	<u>415.00</u>	<u>415.00</u>
<u>Hourly Employees</u>	*	*	*	*
City Resource Specialist	6.75 (8)	5.75 (11)	5.75 (11)	5.75 (11)
Engineering Technician	0.25 (1)	-	-	-
Mechanical Engineering Assistant	0.25 (1)	0.25 (1)	0.25 (1)	0.25 (1)
Office Specialist I	1.00 (2)	1.75 (3)	1.75 (3)	1.75 (3)
Power Plant Control Operator	1.75 (2)	2.25 (4)	2.25 (4)	2.25 (4)
Total Hourly Positions	<u>10.00</u>	<u>10.00</u>	<u>10.00</u>	<u>10.00</u>
Glendale Water and Power Total	<u><u>428.15</u></u>	<u><u>418.00</u></u>	<u><u>425.00</u></u>	<u><u>425.00</u></u>

* Indicates number of positions corresponding to the stated Full-Time Equivalence (FTE)