



Youth & Family Services Community Resource Guide



**Community Services
& Parks**

Services for Persons with Intellectual and Physical Disabilities

City of Glendale (Therapeutic Recreation)	(818) 548-3783 Glendaleca.gov	820 E. Maple St, Glendale, CA 91205
Ability First	(818) 507-1969 abilityfirst.org	711 E. Maple St, Suite 114, Glendale, CA 91205
Ahead with Horses	(818) 767-6373 aheadwithhorsesla.org	10157 Johanna Ave, Shadow Hills, CA 91040
California Department of Rehabilitation	(818) 551-2141 dor.ca.gov	425 W Broadway #200, Glendale, CA 91204
Campbell Center	(818) 242-2434 6512 thecampbell.org	San Fernando Rd, Glendale, CA 91201
Easter Seals	(818) 551-0128 easterseals.com	710 W. Broadway, Glendale, CA 91204
F.A.C.T.S.	(818) 241-7702 gusd.net	440 W Lomita Avenue, Glendale, CA 91204
Goodwill	(323) 223-1211 goodwillsocal.org	6343 San Fernando Road, Glendale, CA 91201
Hamilton House	(818) 502-9188 lanterman.ca.networkofcare.org	739 W Glenoaks Blvd, Glendale, CA 91202
Modern Support Services	(818) 244-2677 modernsupportservices.org	
Rights of People with Disabilities	lawhelpca.org	

Domestic Violence and Rapid Rehousing

Family Promise of the Verdugos	(818) 847-1547 familypromiseverdugos.org	P.O. Box 1307 Burbank, CA 91507
Rape, Abuse & Incest National Network (RAINN)	(800) 656-4673 rainn.org	
YWCA of Glendale	(818) 242-4155 glendaleywca.org	735 E Lexington Dr, Glendale, CA 91206

City of Glendale Departments

City Clerk	(818) 548-2090 Glendaleca.gov	613 E Broadway, Suite 110, Glendale CA 91206
Community Development	(818) 548-3200 Glendaleca.gov	633 E. Broadway Ave, Suite 101, Glendale, CA 91206
Community Services and Parks	(818) 548-2000 Glendaleca.gov	613 E. Broadway, Suite 120, Glendale CA 91206
Glendale Fire	(818) 548-4800 Glendaleca.gov	421 Oak St., Glendale CA 91204
Glendale Police	(818) 548-4840 Glendaleca.gov	131 N Isabel St, Glendale, CA 91206
Glendale Water and Power	(818) 548-3300 Glendaleca.gov	141 N. Glendale Ave, Glendale CA 91206
Human Resources	(818) 548-2110 Glendaleca.gov	613 Broadway Suite 100, Glendale CA 91206
Library, Arts & Culture	(818) 548-2021 Glendaleca.gov	222 East Harvard Street, Glendale, CA 91205

Management Services	(818) 548-4844 Glendaleca.gov	613 E. Broadway Suite 200, Glendale, CA 91206
Public Works	(818) 548-3900 Glendaleca.gov	633 E. Broadway Suite 209, Glendale, CA 91206

Homeless Programs

City of Glendale (Homeless Services)	(818) 548-3720 Glendaleca.gov	613 E. Broadway, Suite 120, Glendale CA 91206
Ascencia	(818) 246-7900 ascenciaca.org	1851 Tyburn St. Glendale, CA 91204
Catholic Charities	(213) 318-5707 catholiccharitiesla.org	4322 San Fernando Rd. Glendale, CA 91204
Door of Hope	(626) 304-9130 doorofhope.us	669 N. Los Robles Ave. Pasadena, CA 91101
Salvation Army	(818) 246-5586 glendale.salvationarmy.org	320 W. Windsor Road, Glendale CA 91204
YMCA of Glendale	(818) 241-4130 glendaleymca.org	140 N Louise St, Glendale, CA 91206

Hospitals/Medical/Dental

Adventist Health Glendale Hospital	(818) 409- 8202 adventisthealth.org	1509 Wilson Terrace, Glendale CA
All for Health	(818) 409-3020 all4health.org	519 E. Broadway, Glendale CA 91205
Center for Disease Control	(800) 232-4636 cdc.gov	
Center for Health Care Rights	(213) 383-4519 cahealthadvocates.org	520 S Lafayette Park Pl # 214, Los Angeles, CA 90057
Children's Hospital of Los Angeles	(323) 361-2112 chla.org	4650 Sunset Blvd, Los Angeles, CA 90027
Comprehensive Community Health Centers	(818) 265-2264 cchccenters.org	801 S. Chevy Chase Dr., Suite 20 Glendale, CA 91205
Dignity Health Glendale Memorial Hospital	(818) 502-1900 services.dignityhealth.org	1420 S. Central Ave, Glendale CA 91204
First 5 LA	(213) 482-5902 first5la.org	750 N. Alameda St, Los Angeles, CA 90012
Glendale Community Free Health Clinic	(818) 245-8109 glendaleclinic.org	134 N. Kenwood, Room 330, Glendale, CA 91206
Health and Nutrition Hotline (DPSS)	(877) 597-4777 ccrcca.org	
Immunization Clinic	(323) 660-3722 yellowpages.com	660 W Broadway, Glendale, CA 91204
Kids Community Dental Clinic	(818) 841-8010 kidsclinic.org	400 W Elmwood Ave, Burbank, CA 91506
Medi-Cal for Families	(800) 880-5305 dhcs.ca.gov	PO Box 7187, Pasadena, CA 91109
Saban Free Health Clinic	(323) 653-1990 sabancommunityclinic.org	8405 Beverly Blvd, Los Angeles, CA 90048
USC Verdugo Hills Hospital	(818) 790-7100 uscvh.org	1812 Verdugo Blvd, Glendale, CA 91208

Housing & Utilities

City of Glendale (Housing)	(818) 548-3936 Glendaleca.gov	141 N. Glendale Ave, Suite 202, Glendale, CA 91206
Department of Housing and Urban Development (HUD)	(213) 894-8000 hud.gov	300 N. Los Angeles Street, Los Angeles, CA 90002
Glendale Tenants Union	(818) 630-9795 glendaletenants.org	glendaletenantsunion@gmail.com
Home Energy Assistance Program (HEAP)	(213) 353-3982 pacela.org	1055 Wilshire Blvd, Suite 1475, Los Angeles CA 90017
Housing Authority (City of Los Angeles)	(213) 252-2500 hud.gov	1515 E 105th St, Los Angeles, CA 90002
Housing Rights Center	(626) 791-0211 housingrightscenter.org	1020 N. Fair Oaks Ave, Pasadena, CA 91103
IHSS (In Home Supportive Services)	(888) 822-9622 dps.lacounty.gov	2707 S Grand Ave, Los Angeles, CA 90007

Legal Services

Armenian Bar Association	(323) 666-6288 armenianbar.org	
Bet Tzedek	(323) 939-0506 bettzedek.org	145 S. Fairfax Avenue, Suite 200, Los Angeles, CA 90036
LA Consumer Action Center	(213) 624-4631 consumer-action.org	523 W 6th St #1105, Los Angeles, CA 90014
Legal Aid Association of California	(510) 893-3000 laaconline.org	1550 W 8th St, Los Angeles, CA 90017
Legal Services	(818) 507.1933 unitedhumanrights.org	104 N. Belmont St. Suite 313, Glendale, CA 91206
Los Angeles County Superior Court	(213) 351-8739 lacourt.org	
Neighborhood Legal Services	(818) 291-1761 nlsa.org	1104 E. Chevy Chase Dr, Glendale, CA 91205
Nick of Time Project	(818) 861-7442 nickoftimeproject.org	1946 W. Glenoaks Blvd, Glendale CA 91201
International Rescue Committee	(818) 550-6220 rescue.org	625 N. Maryland Ave, Glendale, CA 91206

LGBTQ Services

Gay and Lesbian Armenian Society	(310) 203-1587 galasla.org	8721 Santa Monica Blvd #654, West Hollywood, CA 90069
GLBT National Hotline	(888) 843-4564	
Los Angeles LGBT Center	(323) 993-7400 lalgbtcenter.org	1625 N. Schrader Blvd, Los Angeles, CA 90038



Mental Health Services

ARK Family Center	(818) 662-7045 arkfamilycenter.org	135 S. Jackson St, Glendale, CA 91205
Didi Hirsch	(818) 244-7257 didihirsch.org	1540 E. Colorado St, Glendale, CA 91205
Foothill Family Mental Health	(626) 993-3000 foothillfamily.org	897 Granit Drive, Pasadena, CA 91101
Glendale Unified School District (Mental Wellness)	(818) 241-3111 gusd.net	223 N. Jackson St, Glendale, CA 91206
Institute for Multicultural Counseling Services	(818) 240-4311 imces.org	121 W. Lexington Dr #300, Glendale, CA 91203
LA County Department of Mental Health Hotline	(800) 854-7771	
Mental Health Advocacy Services	(213) 389-2077 mhas-la.org	3255 Wilshire Blvd UNIT 902, Los Angeles, CA 90010
NAMI	(323) 478-1656 namiglendale.org	1540 E Colorado St, Glendale, CA 91205
National Suicide Prevention Lifeline	(800) 273-8255	
Pacific Clinics	(818) 547-9544 pacificclinics.org	237 N. Central Ave, Glendale CA 91203

Nutrition

City of Glendale (Elderly Nutrition Program)	(818) 548-3775 Glendaleca.gov/parks	201 E. Colorado St. Glendale, CA 91205
Cal Fresh	(877) 847-3663 getcalfresh.org	744 P Street, Sacramento, CA 95814
Grace Resource Center (Groceries and Hot Meals)	(661) 940-5272 graceresources.org	45134 Sierra Hwy, Lancaster, CA 93534
Healing Urban Barrios Food Pantry	(323) 504-6070	
Houses of Light Church Corporation	(818) 998-2931 housesoflight.org/	19408 Londelius St, Northridge, CA 91324
Los Angeles Regional Food Bank	(323) 234-3030 lafoodbank.org	1734 E. 41st St, Los Angeles, CA 90058
Pasadena Meals On Wheels	(626) 449-6815 pasadenamealsonwheels.org	500 E. Colorado, Pasadena CA 91101
Project Angel Food	(323) 845-1800 angelfood.org	922 Vine St. Los Angeles CA 90038
Salvation Army Food Pantry	(818) 246-5586 glendale.salvationarmy.org	320 W Windsor Road, Glendale, CA 91204
Shekinah Worship Center (Free Groceries)	(661) 940-8378	42640 10th St W, Lancaster, CA 93534
SOVA (Community Food and Resource Program)	(818) 988-7682 jfsa.org	16439 Vanowen St. Van Nuys, CA 91406
WIC Office (Women, Infants and Children)	(818) 361-7541 fns.usda.gov/wic	801 S. Chevy Chase Dr. #801, Glendale, CA 91205

Parenting/Women's/Child Services

Avenues Pregnancy Clinic	(323) 913-1975 avenuespc.org	1911 W Glenoaks Blvd, Glendale, CA 91201
Child Care Resource Center	(818) 717-1000 ccrcca.org	20001 Prairie Street, Chatsworth, CA 91311
March of Dimes	(818) 539-2195 marchofdimes.org	700 N. Brand Blvd., Suite 950. Glendale, CA 91203
Soroptimist of Glendale	soroptimistglendale.com	PO Box 826 Glendale, CA 91209
FPA Women's Health	(818) 502-1341 fpawomenshealth.com	372 W. Arden Avenue Suite 200, Glendale, CA 91203

Senior Services

City of Glendale (Adult Recreation Center)	(818) 548-3775 Glendaleca.gov/parks	201 E. Colorado Street, Glendale, CA 91205
City of Glendale (Sparr Heights Community Center)	(818) 548-2187 Glendaleca.gov/parks	1613 Glencoe Way, Glendale, CA 91208
A1 Home Care	(562) 929-8400 a-1homecare.com	690 East Green Street, Suite 204, Pasadena, CA 91101
Adult Protective Services	(213) 351-5401	3333 Wilshire Blvd, Los Angeles, CA 90010
Alternatives for Seniors	(888) 932-7747 alternativesforseniors.com	
Alzheimer's Association	(800) 272-3900 alz.org/socal	9606 S. Santa Monica Blvd #200, Beverly Hills, CA 90210
American Association of Retired Persons (AARP)	(866) 448-3614 states.aarp.org	200 S. Los Robles Ave #400, Pasadena, CA 91101
Autumn Hills Health Care	(818) 246-5677	430 N. Glendale Ave, Glendale, CA 91206
Broadview Residential Care	(818) 246-4951 broadviewresidential.com	535 W. Broadway #1131, Glendale, CA 91204
Elder Abuse Hotline	(877) 477-3646 da.lacounty.gov	
Emerald City Assisted Living	(818) 241-2273	205 E. Los Feliz Rd, Glendale, CA 91205
Glenoaks Convalescent Hospital	(818) 240-4300 nursinghomes.com	409 W. Glenoaks Blvd, Glendale, CA 91202
Glen-Park Assisted Living	(800) 495-5005 glenparkhealthyliving.com	1220 Mariposa St, Glendale, CA 91205
Home Care Assistance	(626) 250-0558 homecareassistance.com	
Home Instead	(818) 381-4740 homeinsteadofburbank.com	
Joslyn Senior Center	(818) 238-5353 burbankca.gov	1301 W. Olive Ave, Burbank, CA 91506
LA4Seniors	la4seniors.com	
Leisure Vale Retirement Home	(818) 244-2323 leisurevale.com	413 E. Cypress St, Glendale, CA 91205
Parkview of Glendale	(818) 246-7457 parkviewofglendale.com	426 Piedmont Ave, Glendale, CA 91206

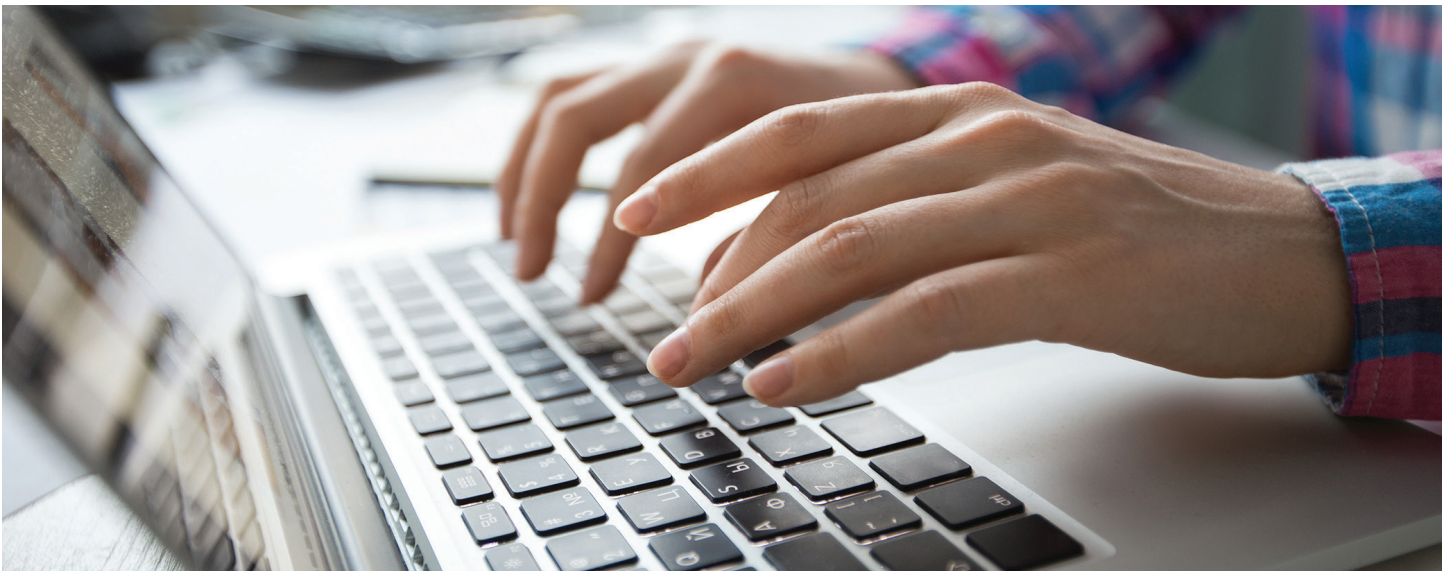
Seniors Helping Seniors	(626) 337-6606 seniorshelpingseniors.com	
Social Security Administration	(800) 772-1213 ssa.gov	225 W. Broadway #600, Glendale, CA 91204
Windsor Senior Living Community	(747) 800-4941 humangood.org	1230 E. Windsor Rd, Glendale, CA 91205

Transportation

Access	(800) 883-1295 accessla.org	3449 Santa Anita Ave, El Monte CA 91731
Amtrak	(800) 872-7245 amtrak.com	400 W. Cerritos Ave, Glendale, CA 91204
California Department of Motor Vehicles	(800) 777-0133 dmv.ca.gov	1335 W. Glenoaks Blvd., Glendale, CA 91201
Dial-A-Ride	(818) 548-3960 Glendaleca.gov	633 E. Broadway, Room 300, Glendale, CA 91206
Glendale Beeline	(818) 548-3960 Glendaleca.gov	613, E. Broadway, Glendale, CA 91206
Greyhound	(213) 629-8401 greyhound.com	1716 E. 7th St, Los Angeles, CA 90021
Metrolink	(800) 872-7245 metrolinktrains.com	400 W. Cerritos Ave, Glendale, CA 91204
TAP (Transit Access Pass)	(866) 827-8646 taptogo.net	

Veteran's Resources

LA County Bar Association	(213) 896-6564 lacba.org	1055 W. 7th St #2700, Los Angeles, CA 90017
Military Women in Need (Homeless Prevention)	(310) 733-2450 foundationforwomenwarriors.org	5062 Lankershim Blvd, #3013, North Hollywood, CA 91601
US Veterans Inc. (Housing, Employment & Training)	(213) 542-2604 usvetsinc.org	800 W. 6th St, Los Angeles, CA 90017
Wellness Works	(818) 247-2062 wellnessworks4veterans.org	540 W. Broadway, Glendale, CA 91204



Youth & Family Services Support

City of Glendale (Youth & Family Services)	(818) 937-7247 Glendaleca.gov	501 S. Pacific Glendale, CA 91204
Action Teen/Parent Support Group	(800) 367-8336 actiondrugrehab.com	220 N. Kenwood St, Room 104, Glendale CA 91206
Armenian Relief Society	(818) 241-7533 arswestusa.org	517 W Glenoaks Blvd, Glendale, CA 91202
Armenian Youth Association of California	(818) 552-2922 ayacalifornia.org	1811 S. Glendale Ave. Glendale, CA 91205
American Red Cross	(818) 243-3121 Redcross.org	1501 S. Brand Blvd, Glendale, CA 91204
Assistance League of Glendale	(818) 246-2294 alglendale.org	314 E. Harvard St, Glendale, CA 91205
Committee for Armenian Students in Public Schools	(310) 471-8209 casps.org	6252 Honolulu Ave, Glendale, CA 91214
Covenant House (Youth Homeless Shelter)	(323) 461-3131 covenanthousecalifornia.org	1325 N. Western Ave, Los Angeles, CA 90027
D.A.R.E. (Drug Abuse Resistance Education)	(310) 215-0575 dare.org	9800 La Cienega Blvd, #401, Inglewood, CA 90301
Friday Night Live Initiative	(800) 782-4264 wp.sbcounty.gov	351 N. Mountain View Ave, San Bernardino CA 92415
GenNext AGBU After School Program	(626) 794-7942 agbuwesterndistrict.org	Glendale YWCA, 735 E. Lexington Drive, Glendale, CA 91206
Girls on the Run of LA County	(323) 221-0265 gotrla.org	556 S. Fair Oaks Ave, #101, Pasadena, CA 91105
Glendale Community College	(818) 240-1000 glendale.edu	1500 N. Verdugo Rd, Glendale, CA 91208
Glendale Education Foundation	(818) 247-0466 glened.org	223 N. Jackson St, Glendale, CA 91205
Glendale Historical Society	info@glendalehistorical.org glendalehistorical.org	PO Box 4173, Glendale, CA 91202
Glendale Parks & Open Space Foundation	(818) 548-2000 glendaleparksfoundation.org	613 East Broadway, Room 120
Glendale Youth Alliance (GYA)	(818) 937-8056 Glendaleca.gov	1255 S. Central Ave. Glendale CA 91204
GUSD Student Wellness Office	(818) 241-3111 Gusd.net	223 N. Jackson St, Glendale, CA 91206-
Homenetmen Western US Region	(323) 344-4300 homenetmen.net	2324 Colorado Blvd., Los Angeles, CA 90041
Elks Lodge	(818) 242.2105 elks.org	120 E. Colorado Blvd., Glendale, CA 91205
Kiwanis Glendale	(818) 957-7765 glendalekiwanis.info	120 E Colorado St, Glendale, CA 91205
New Directions for Youth	(818) 375-1000 ndfy.org	7315 Lankershim Blvd, North Hollywood, CA 91605
Optimist Youth Homes	(323) 444-3175 oyhfs.org	6957 N. Figueroa St, Los Angeles, CA 90041
Our House Grief Support	(310) 473-1511 ourhouse-grief.org	1663 Sawtelle Blvd #300, Los Angeles, CA 90025
Rotary Club of Glendale Sunrise	(213) 342-6332 glendalesunriserotary.org	109 E. Harvard St, Glendale, CA 91205
SafetyNet Wireless	(888) 224-3213 safetynetwireless.com	
Salvation Army The Zone	(818) 246-5586 glendale-ca.salvationarmy.org	320 W. Windsor Rd, Glendale, CA 91204
Students Training As Role Models (STAR)	(818) 937-7247 Glendaleca.gov	501 S. Pacific, Glendale, CA 91204
YMCA of the Foothills (Youth Drug and Alcohol Pre)	(818) 790-0123 ymcafoothills.org	1930 Foothill Blvd, La Cañada Flintridge, CA 91011