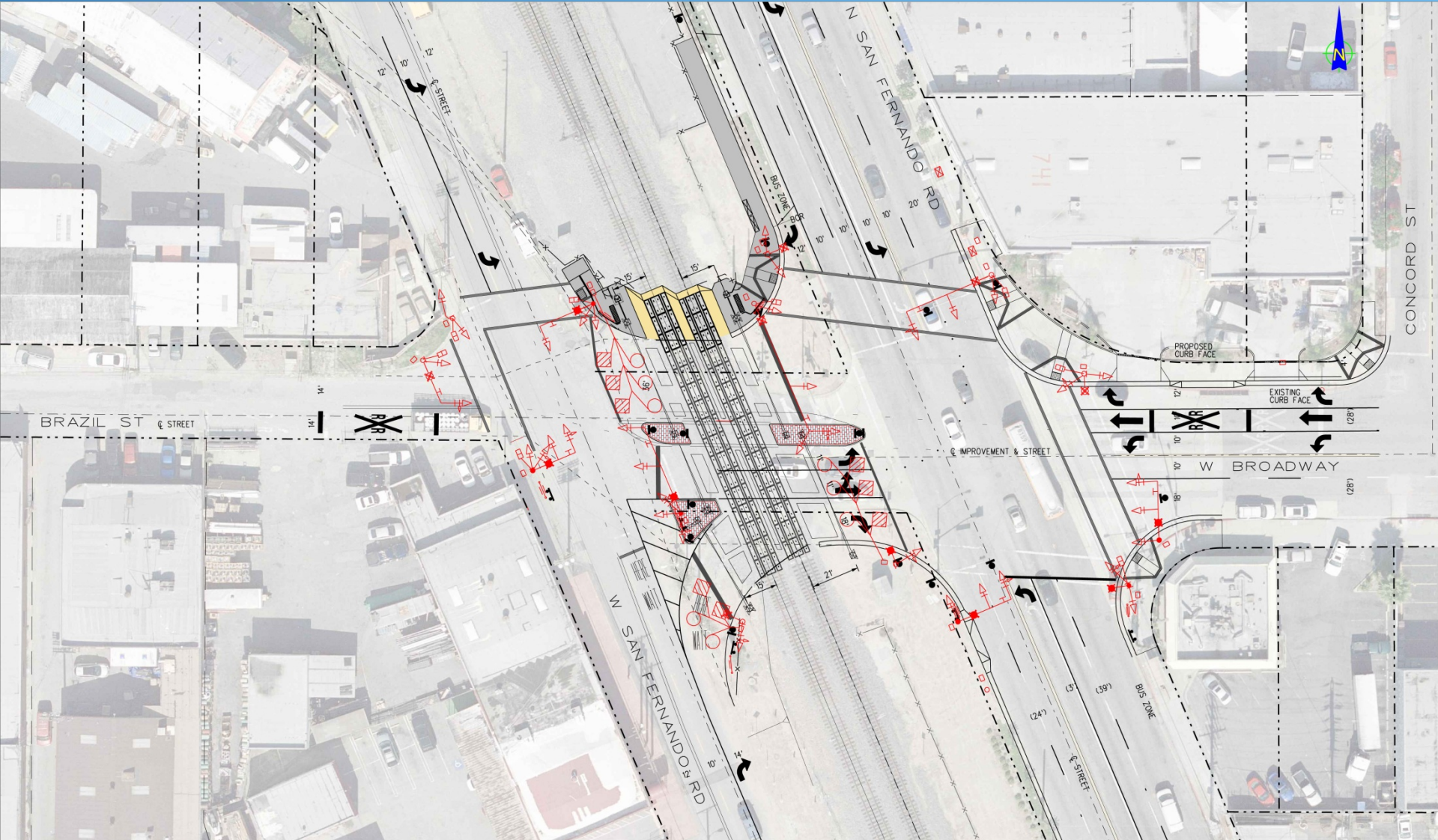
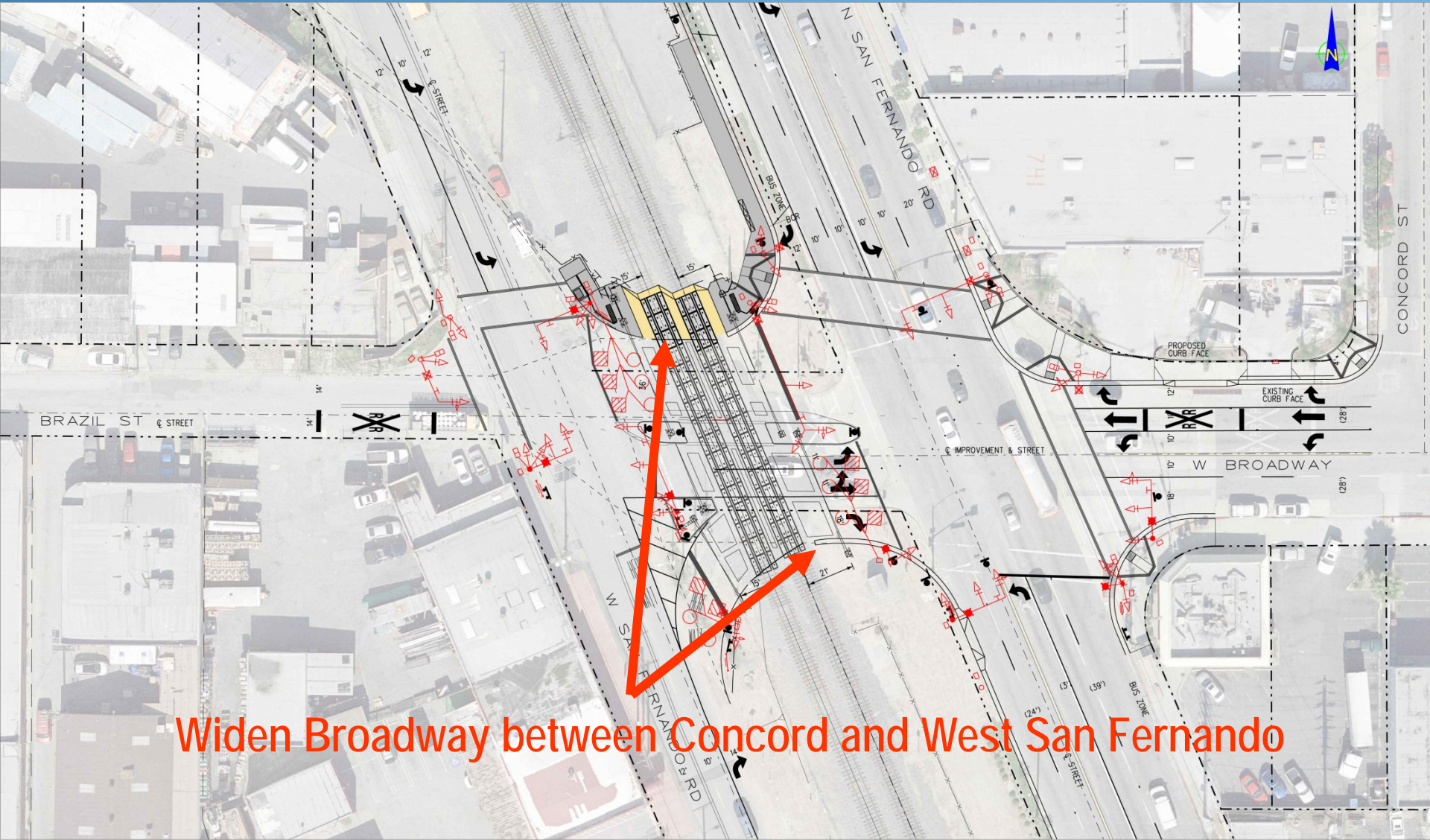


Broadway / Brazil Street and Chevy Chase Drive Crossing Safety Improvements

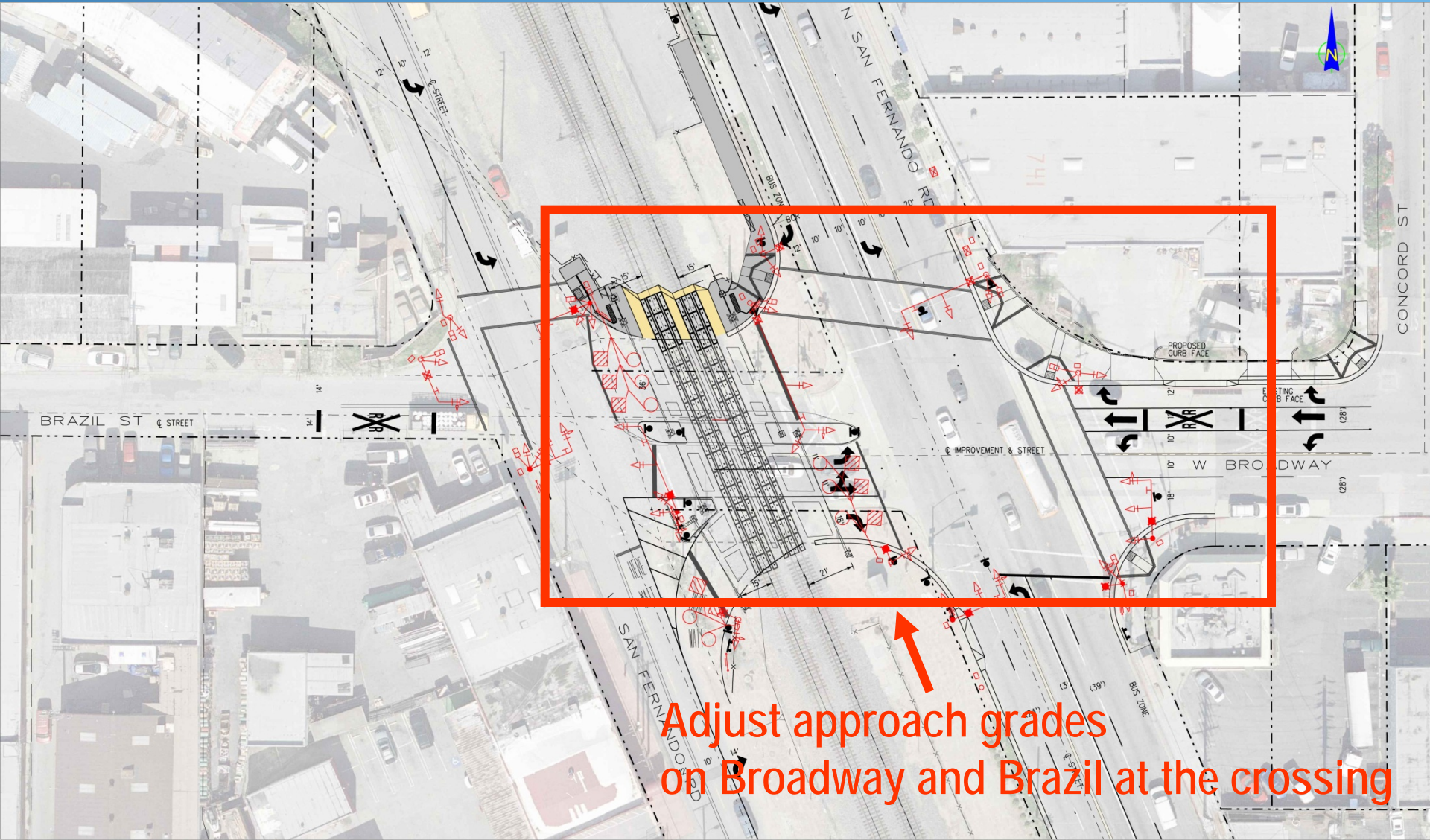
**Community Outreach Meeting
March 27, 2013**

Broadway Scope of Work



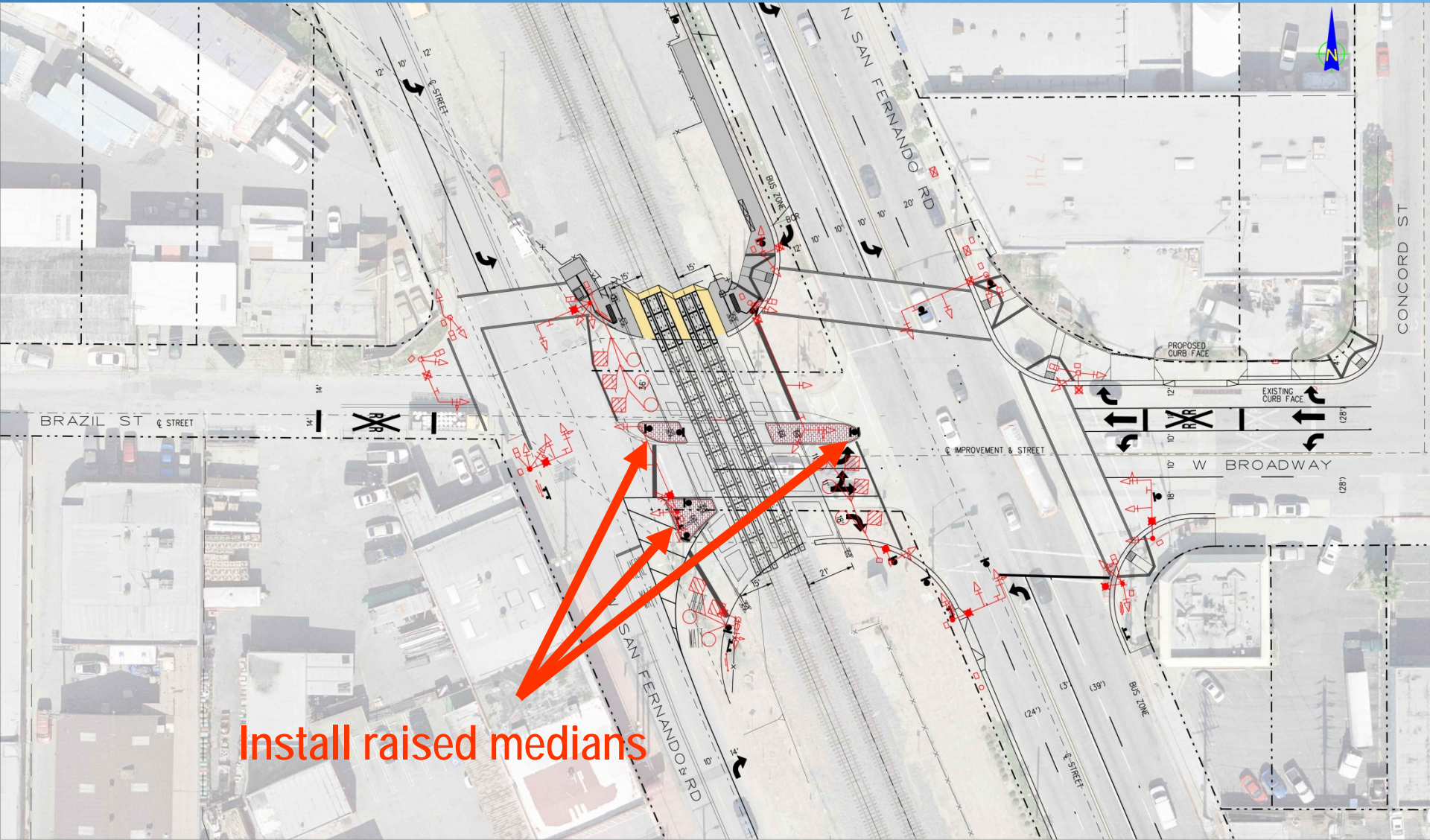


Widen Broadway between Concord and West San Fernando

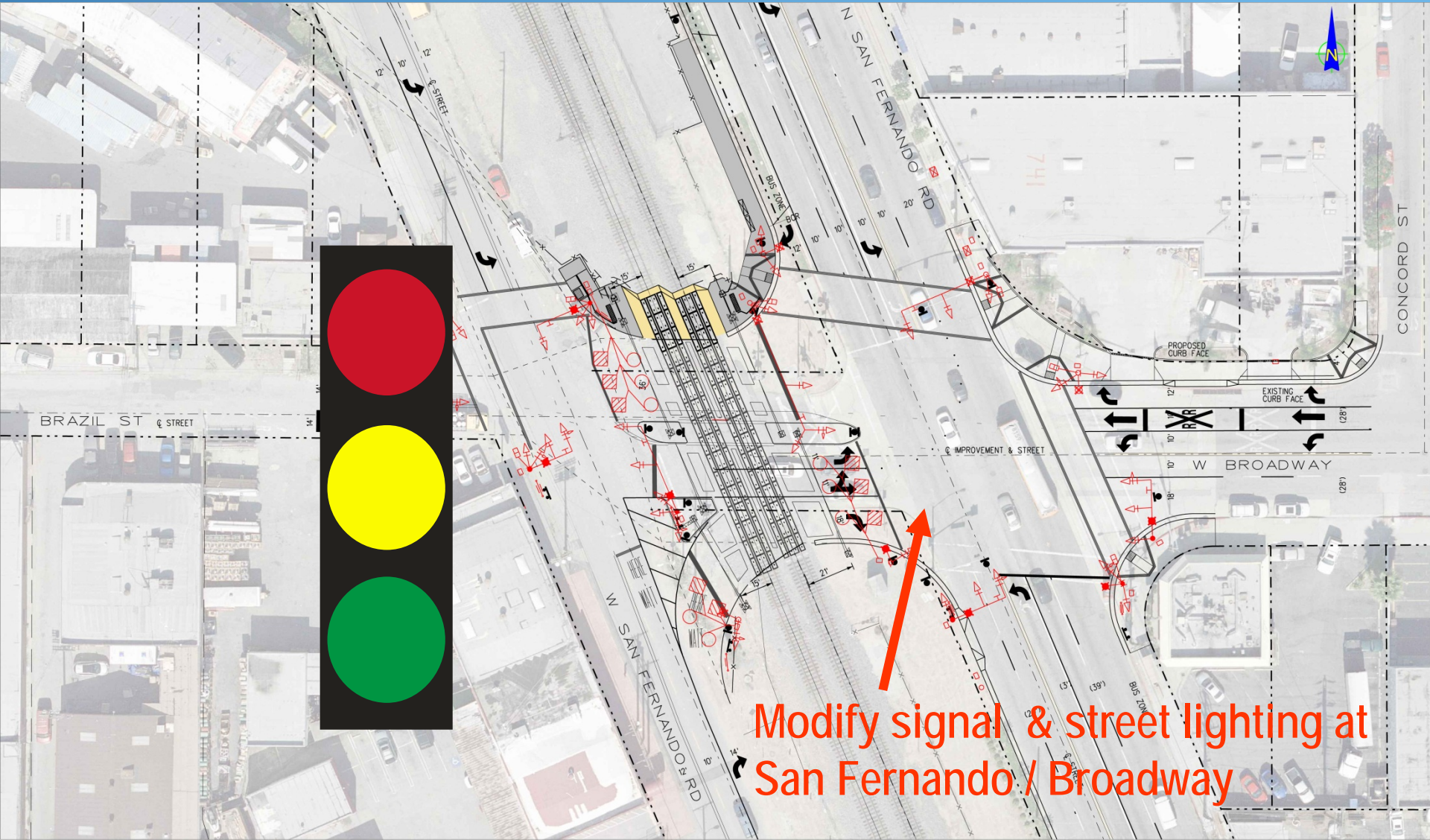


Adjust approach grades on Broadway and Brazil at the crossing



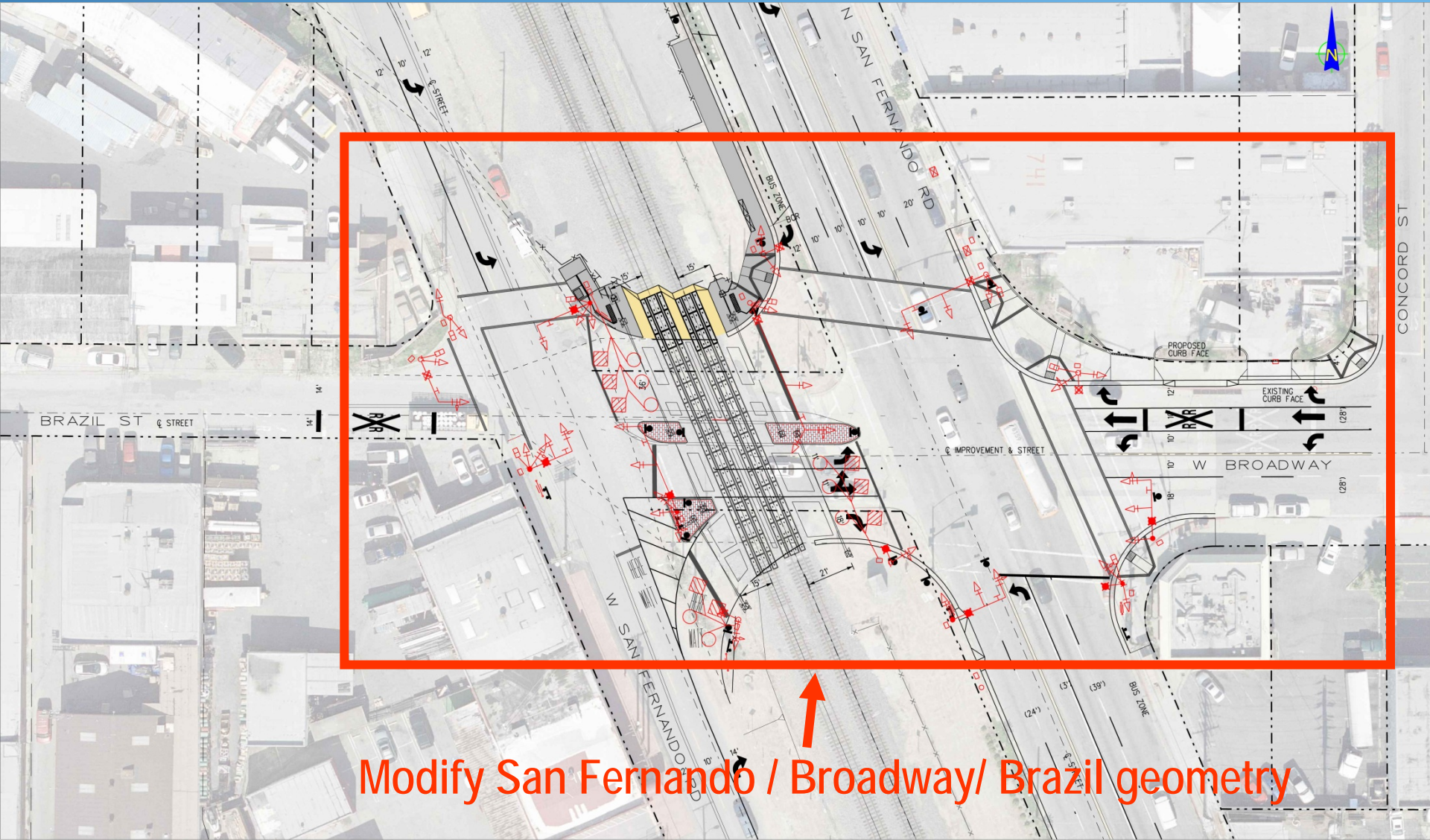


Install raised medians

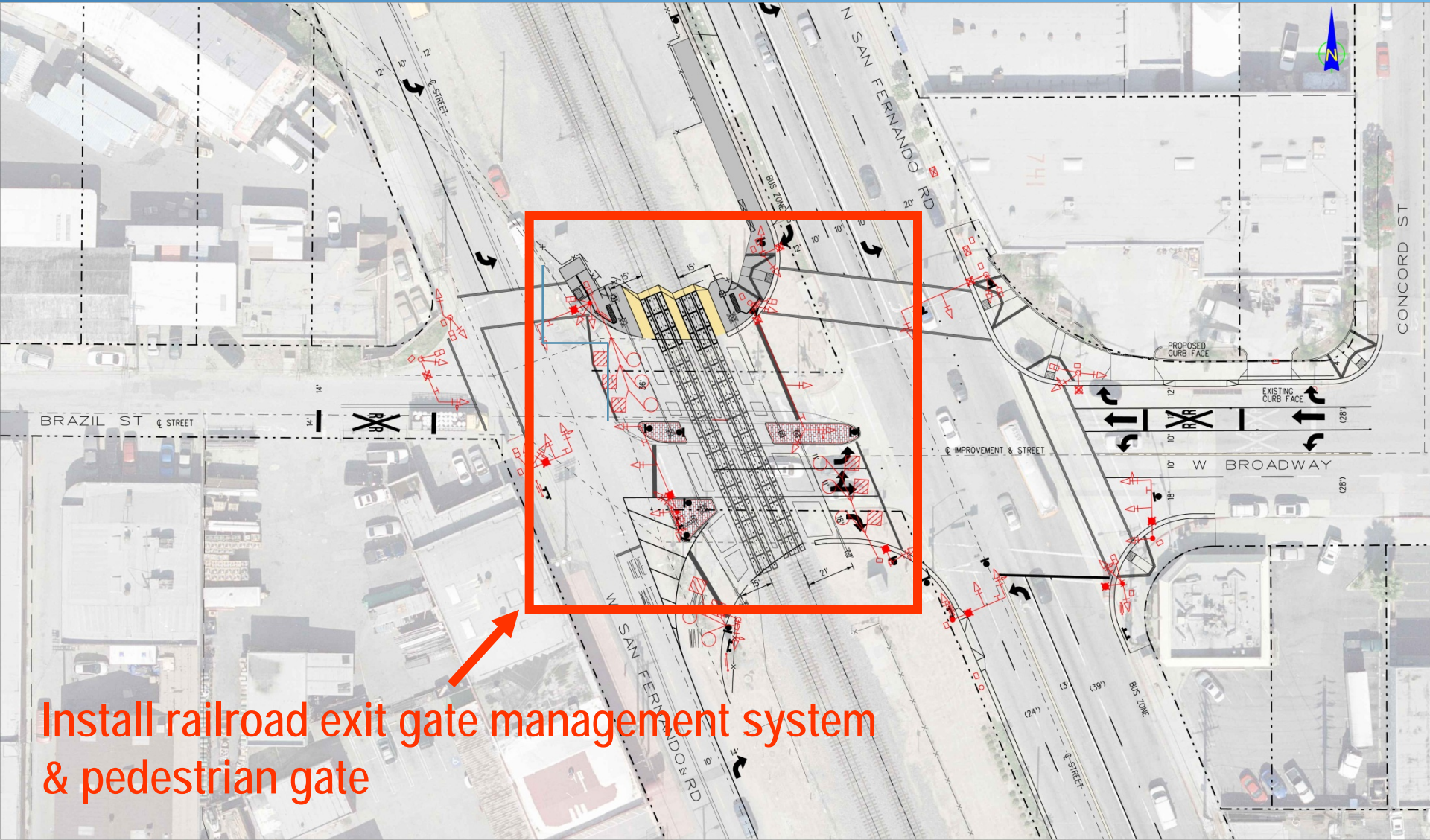


Modify signal & street lighting at San Fernando / Broadway



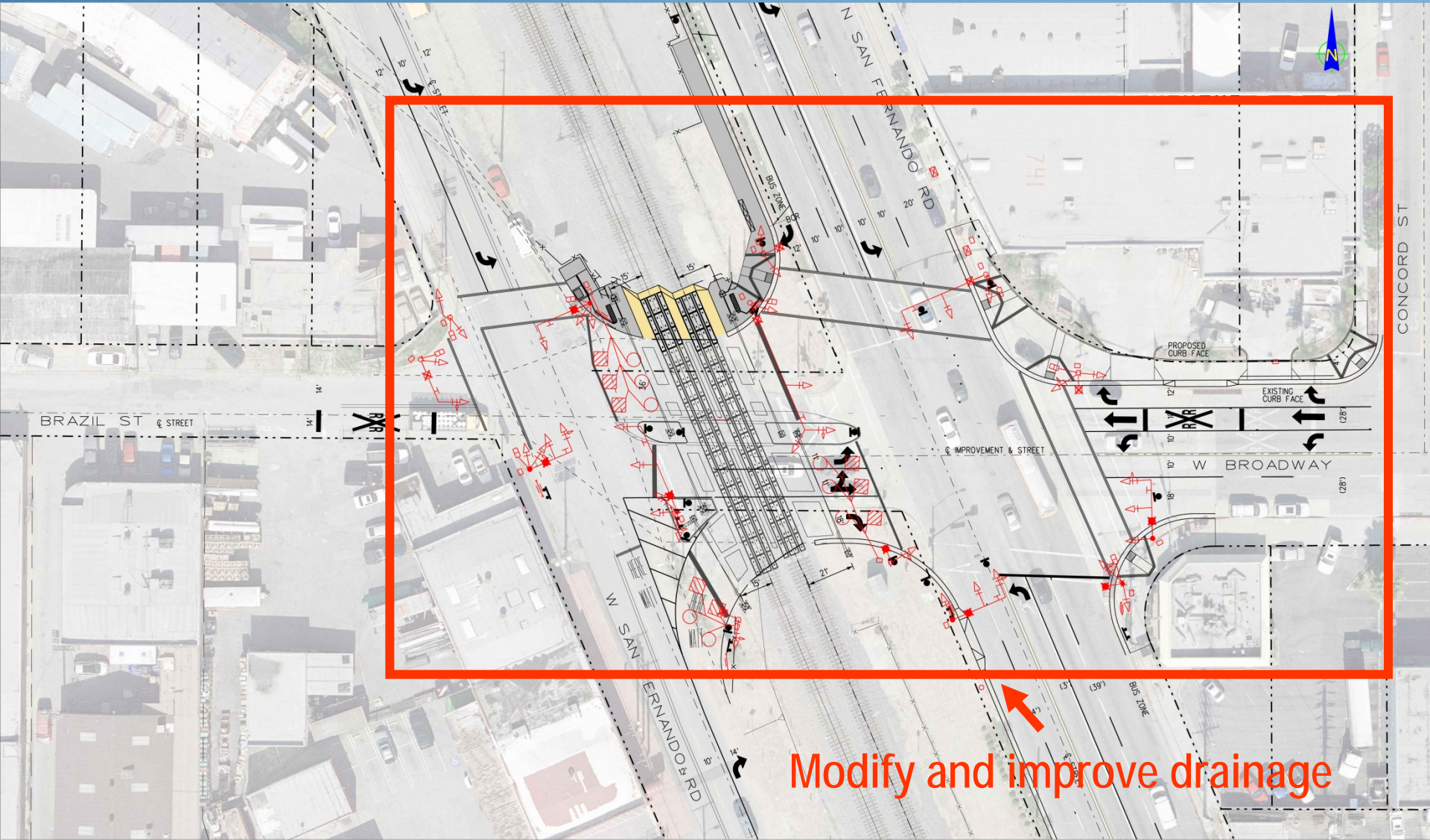


Modify San Fernando / Broadway/ Brazil geometry

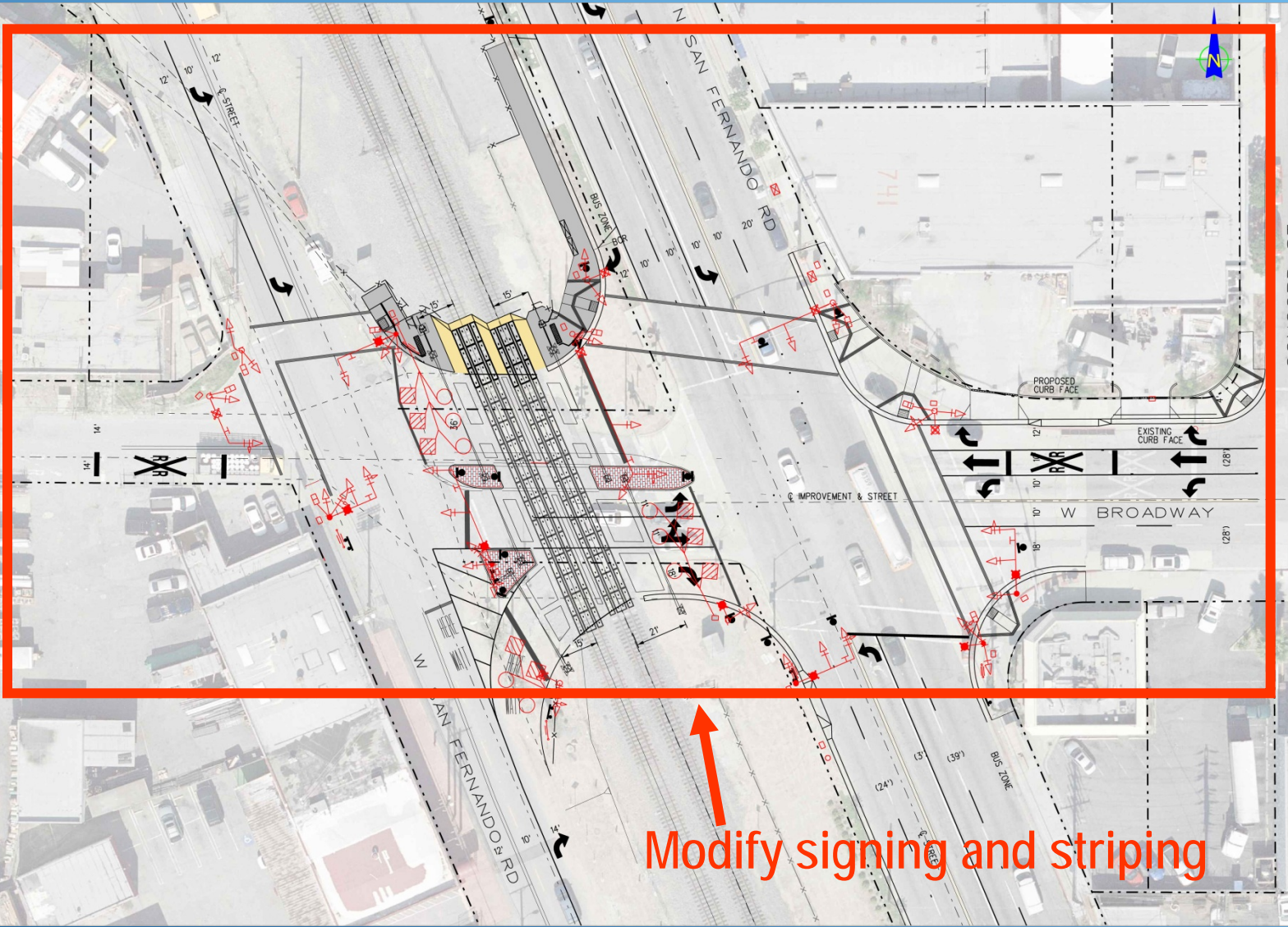


Install railroad exit gate management system & pedestrian gate



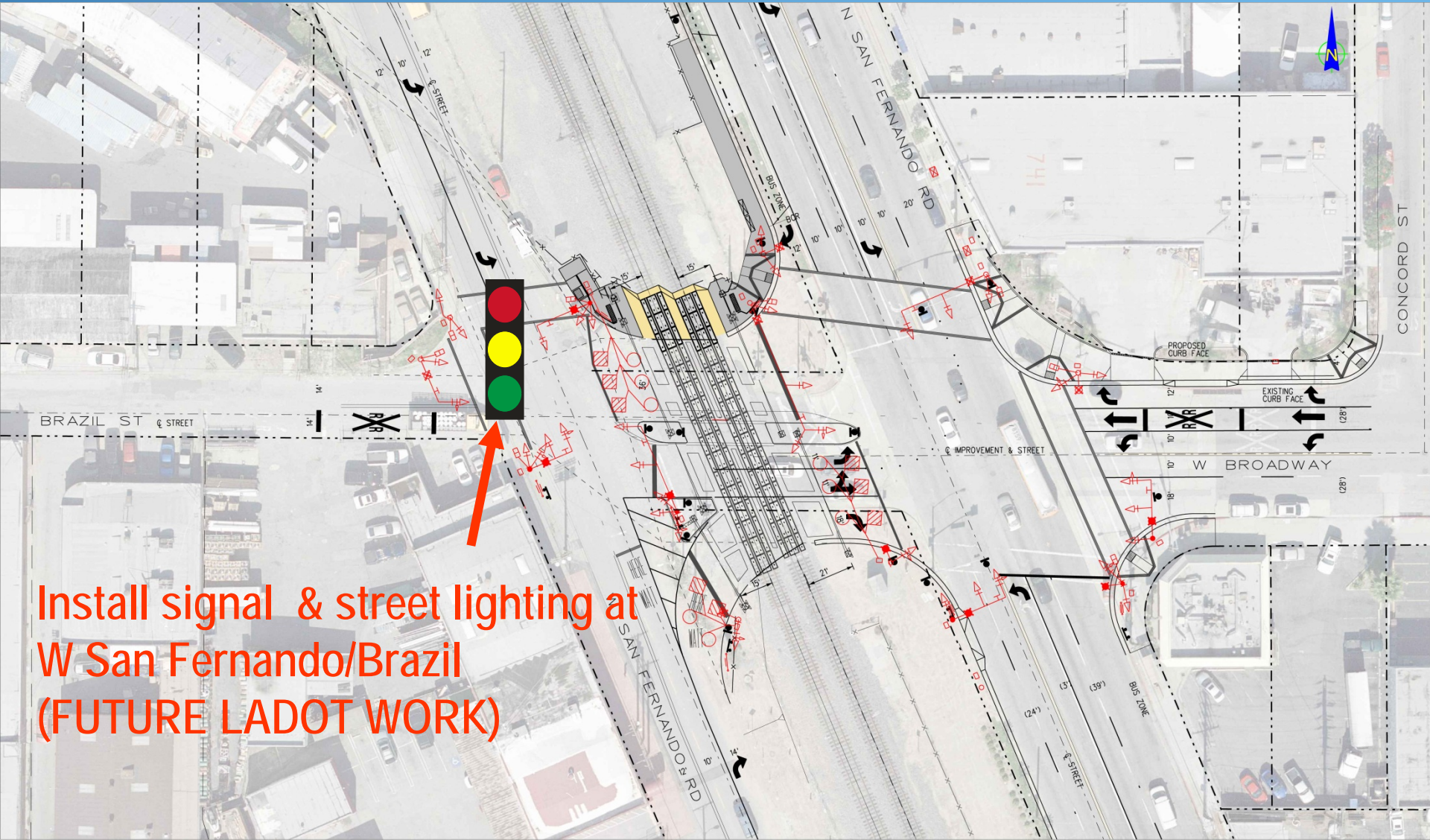


Modify and improve drainage



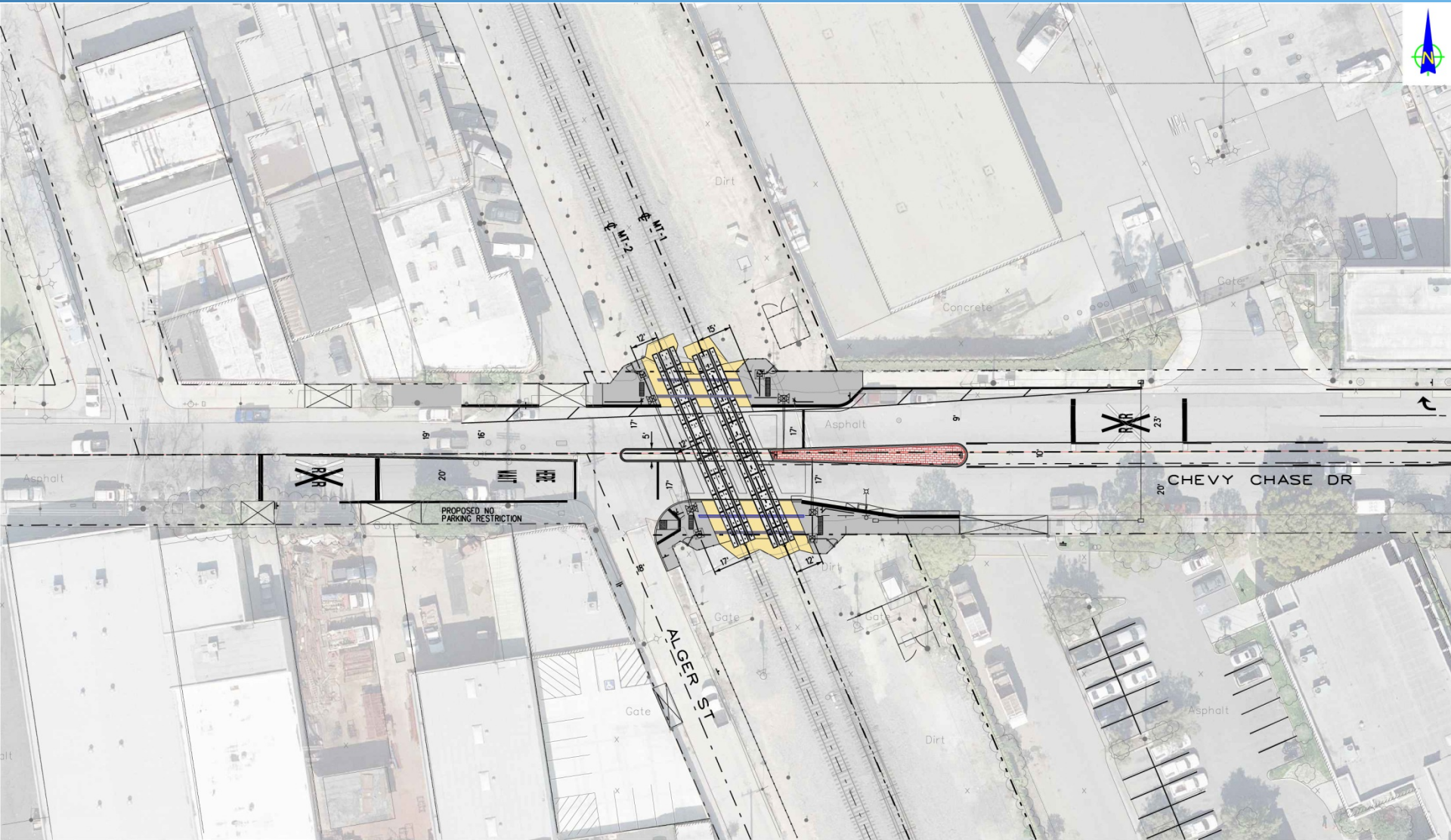
Modify signing and striping

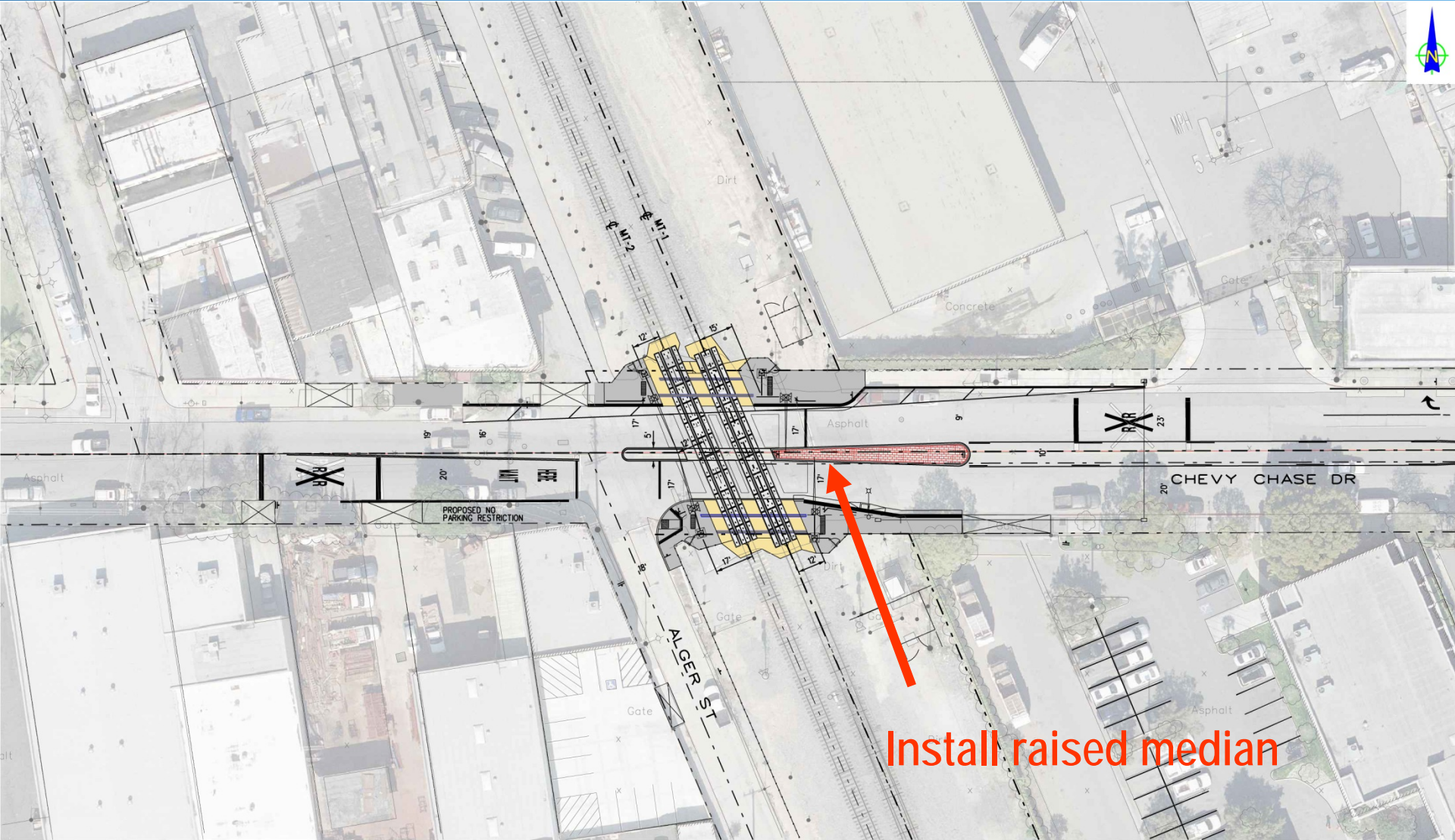




Install signal & street lighting at
W San Fernando/Brazil
(FUTURE LADOT WORK)

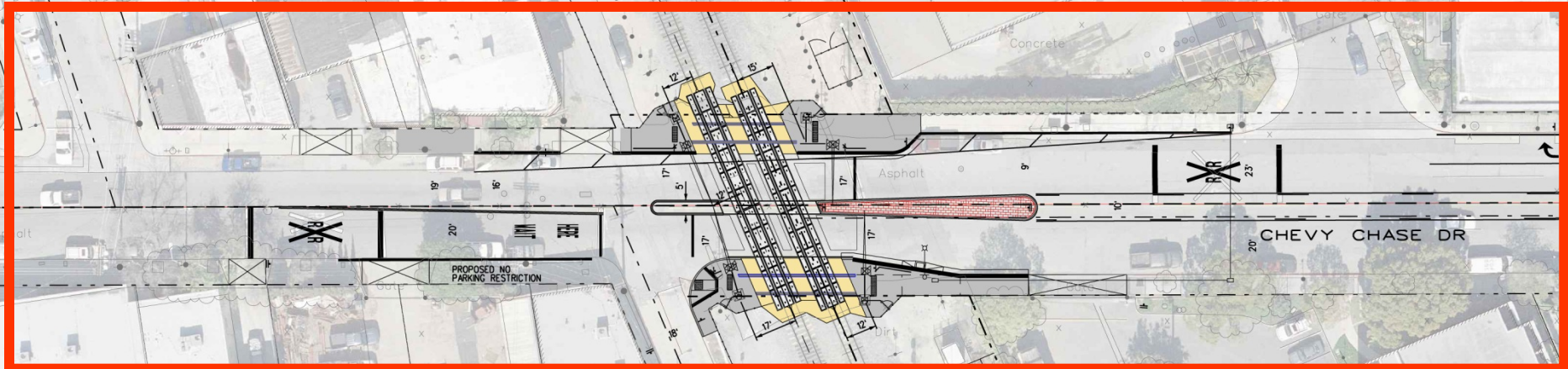
Chevy Chase Drive Scope of Work





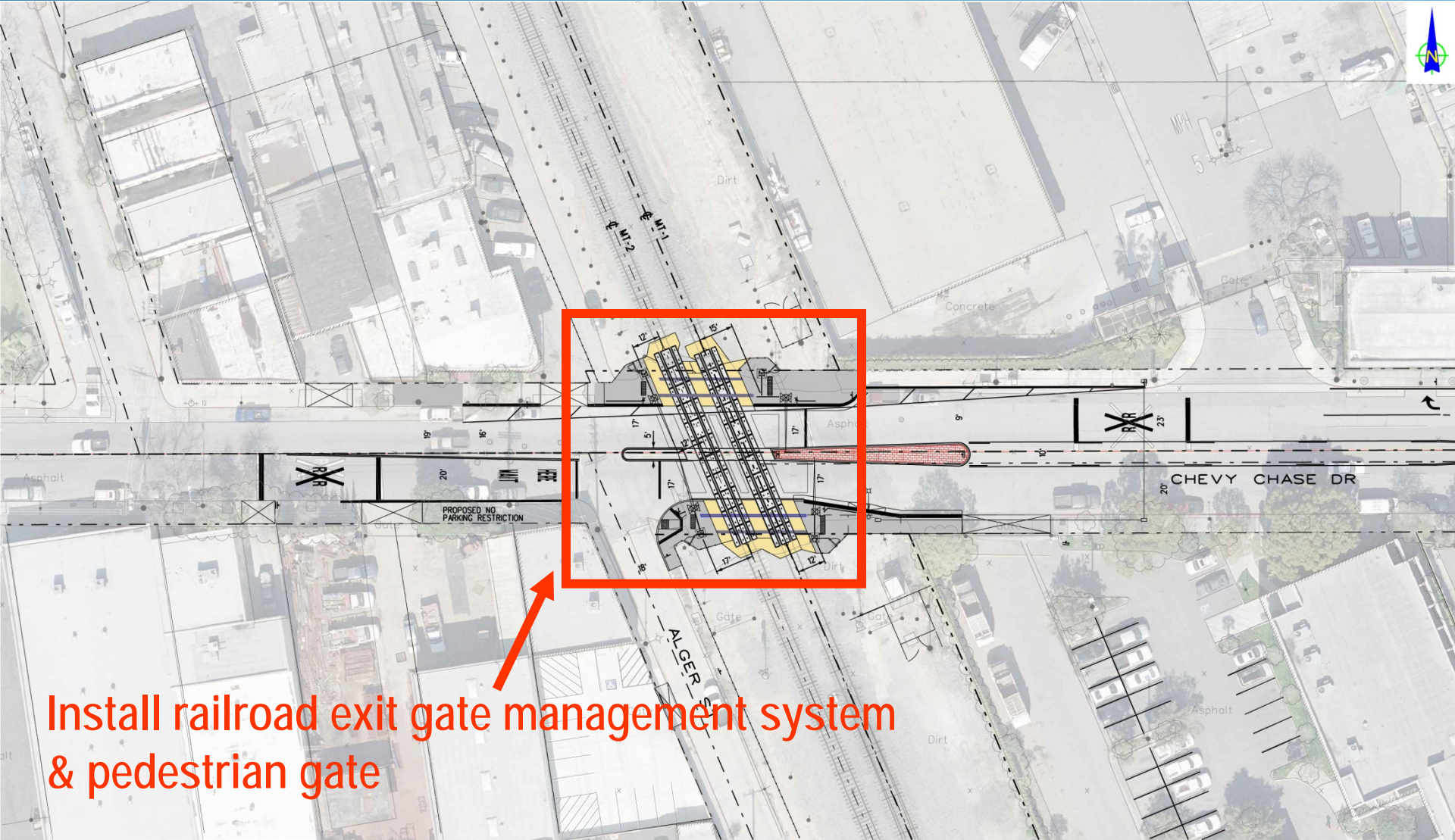
Install raised median





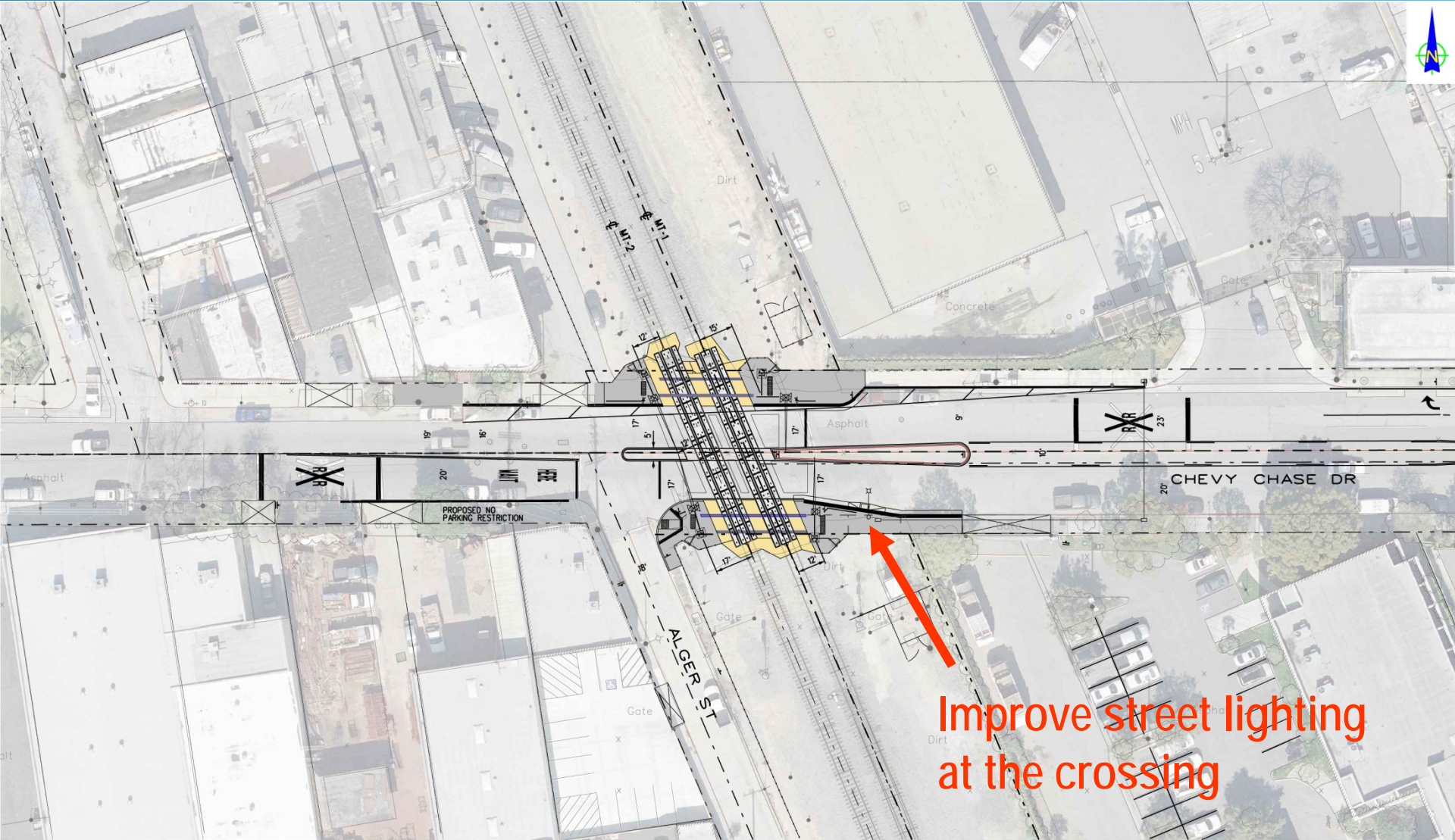
Modify signing and striping on Chevy Chase Drive





Install railroad exit gate management system
& pedestrian gate





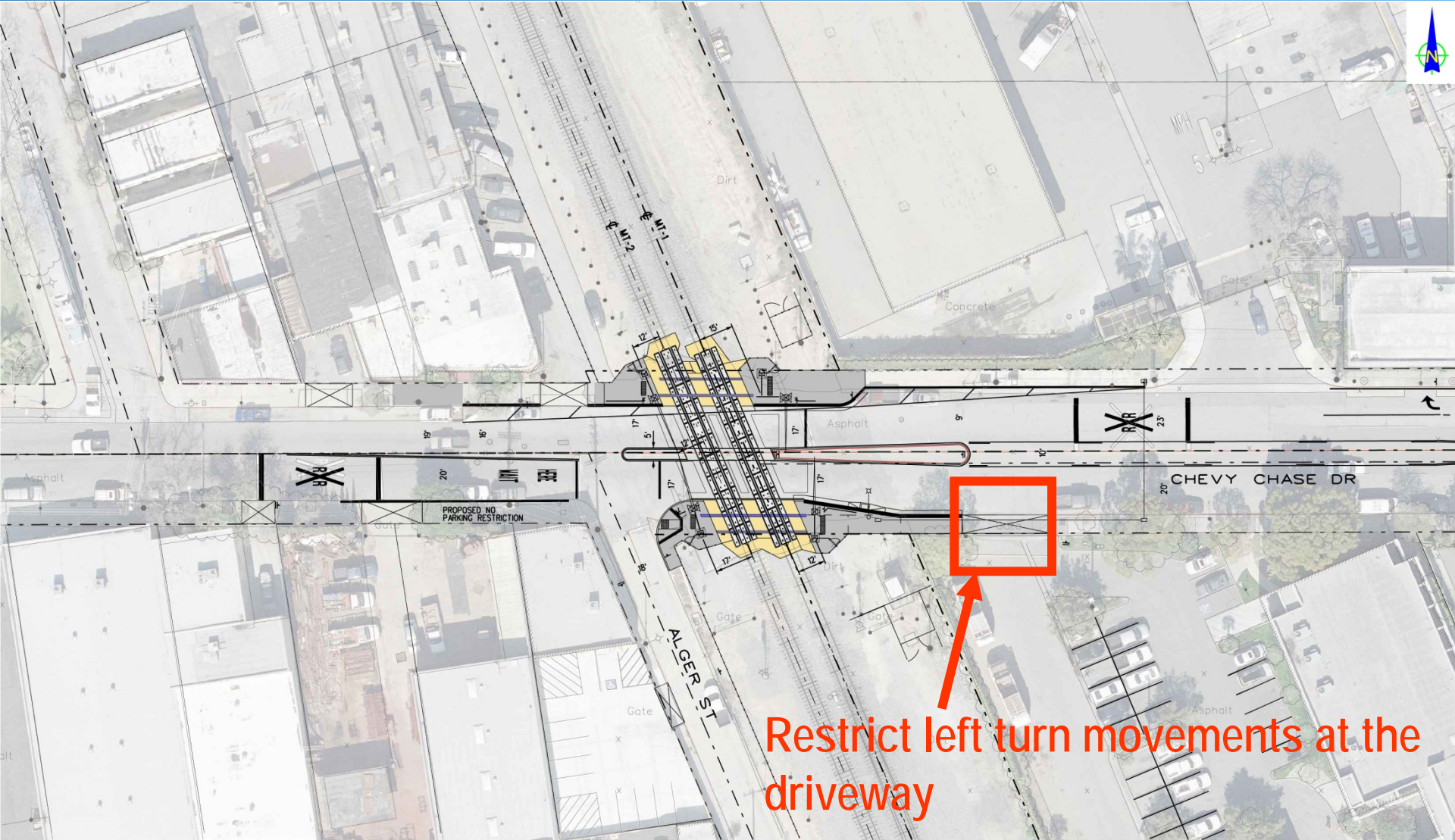
PROPOSED NO PARKING RESTRICTION

ALGER ST

CHEVY CHASE DR

Improve street lighting at the crossing





Restrict left turn movements at the driveway

Project Schedule

- Estimated Start: Late April 2013
- Estimated Finish: Early January 2014

Construction Impacts

- Traffic may be delayed or detoured
- Parking may be prohibited
- Construction noise and dust may occur
- Access to some properties may be temporarily restricted
- Turning movements may be prohibited at intersections
- Pedestrian crossing will always be provided
- Weekday construction limited to 9 AM to 3:30 PM

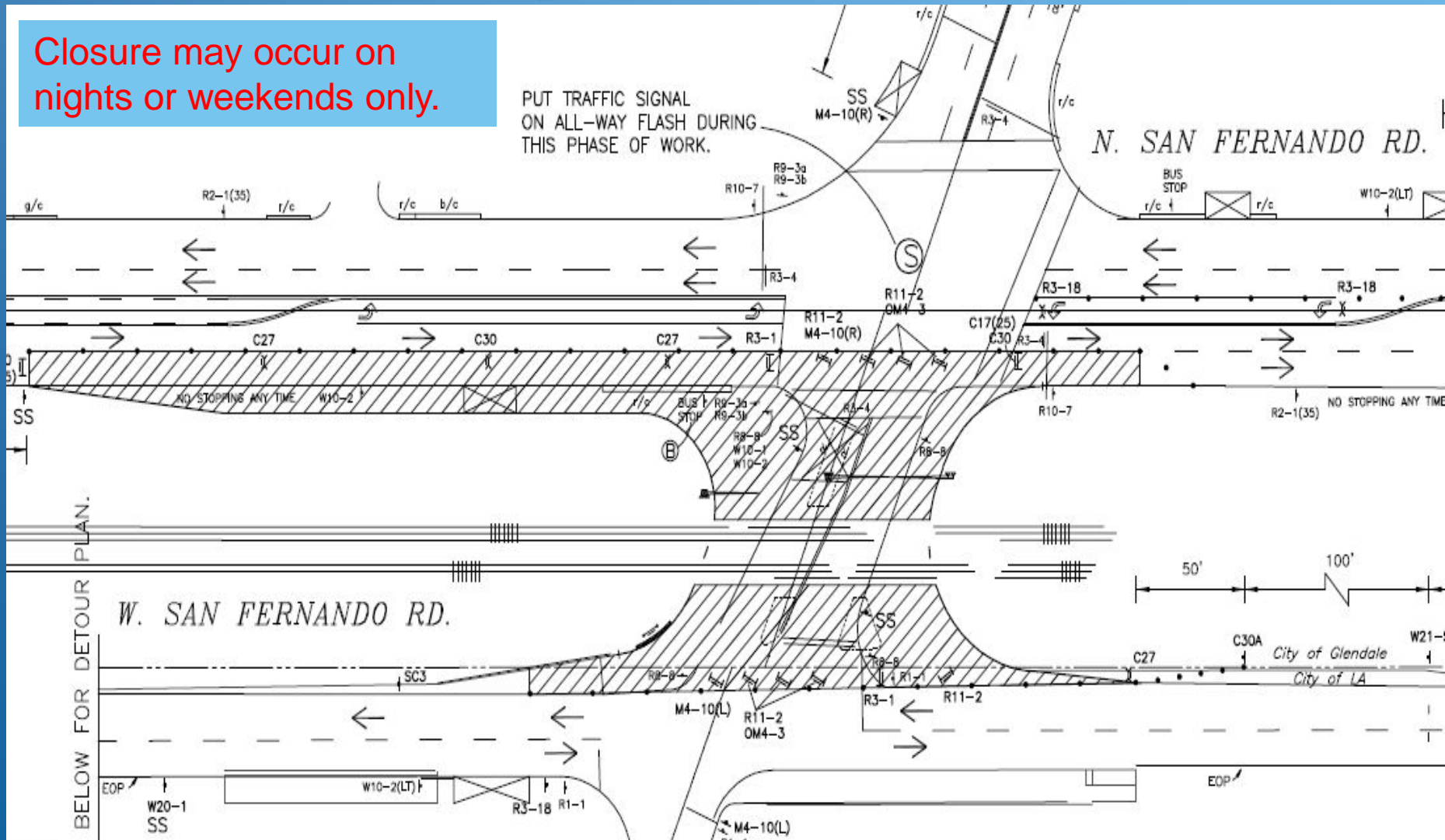
Traffic Impacts

- San Fernando: Maintain minimum 1 travel lane in each direction at ALL times.
- Broadway/Brazil : Maintain 1 travel lane in each direction during working hours.
- Chevy Chase: Maintain 1 lane for two-way traffic during working hours.
- Divide construction area into stages
- Limited to one crossing closure at any time
- During closure, construction may occur at night or weekend

Broadway / Brazil Closure

Closure may occur on nights or weekends only.

PUT TRAFFIC SIGNAL ON ALL-WAY FLASH DURING THIS PHASE OF WORK.

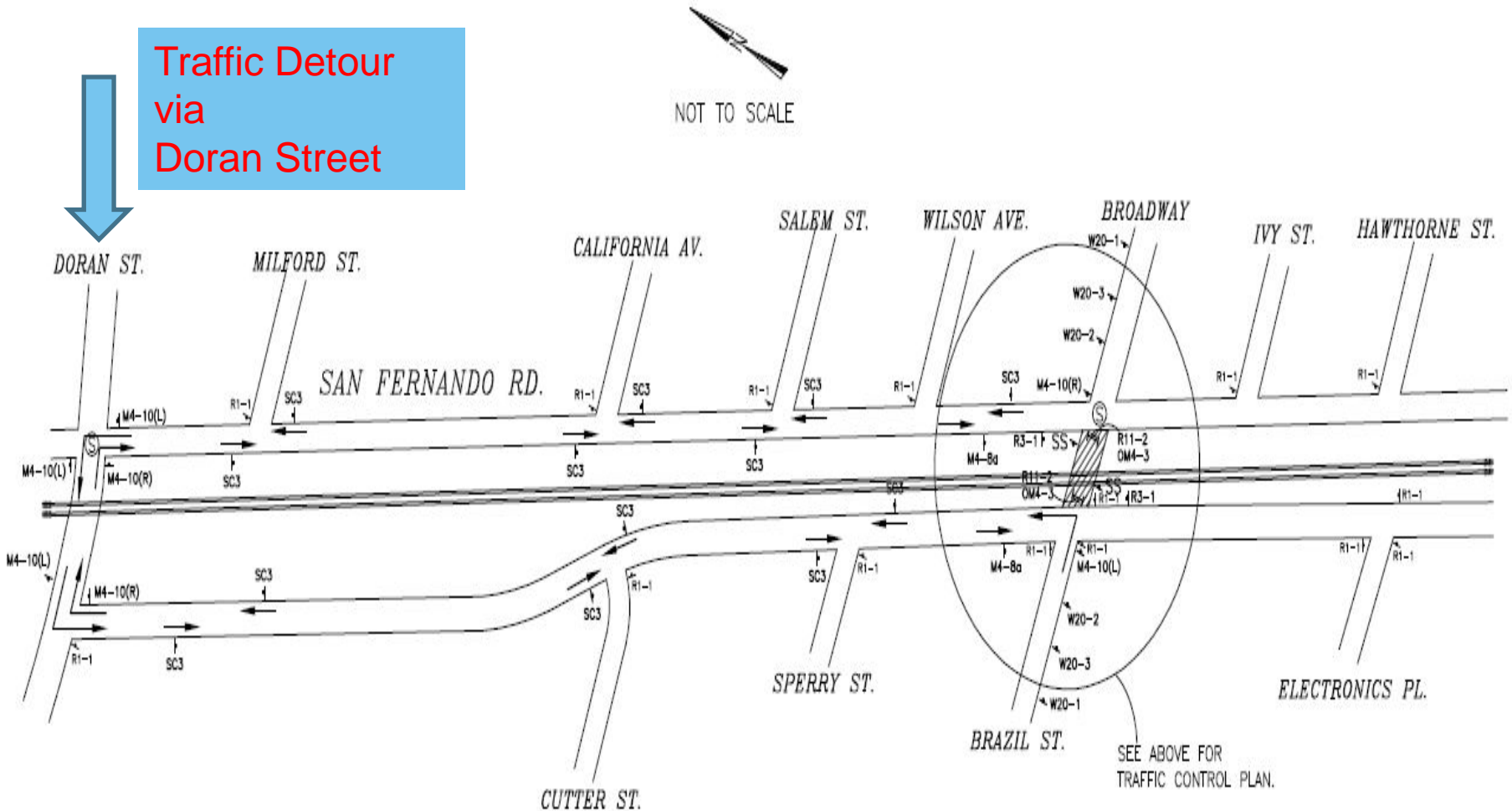


Broadway / Brazil Detour

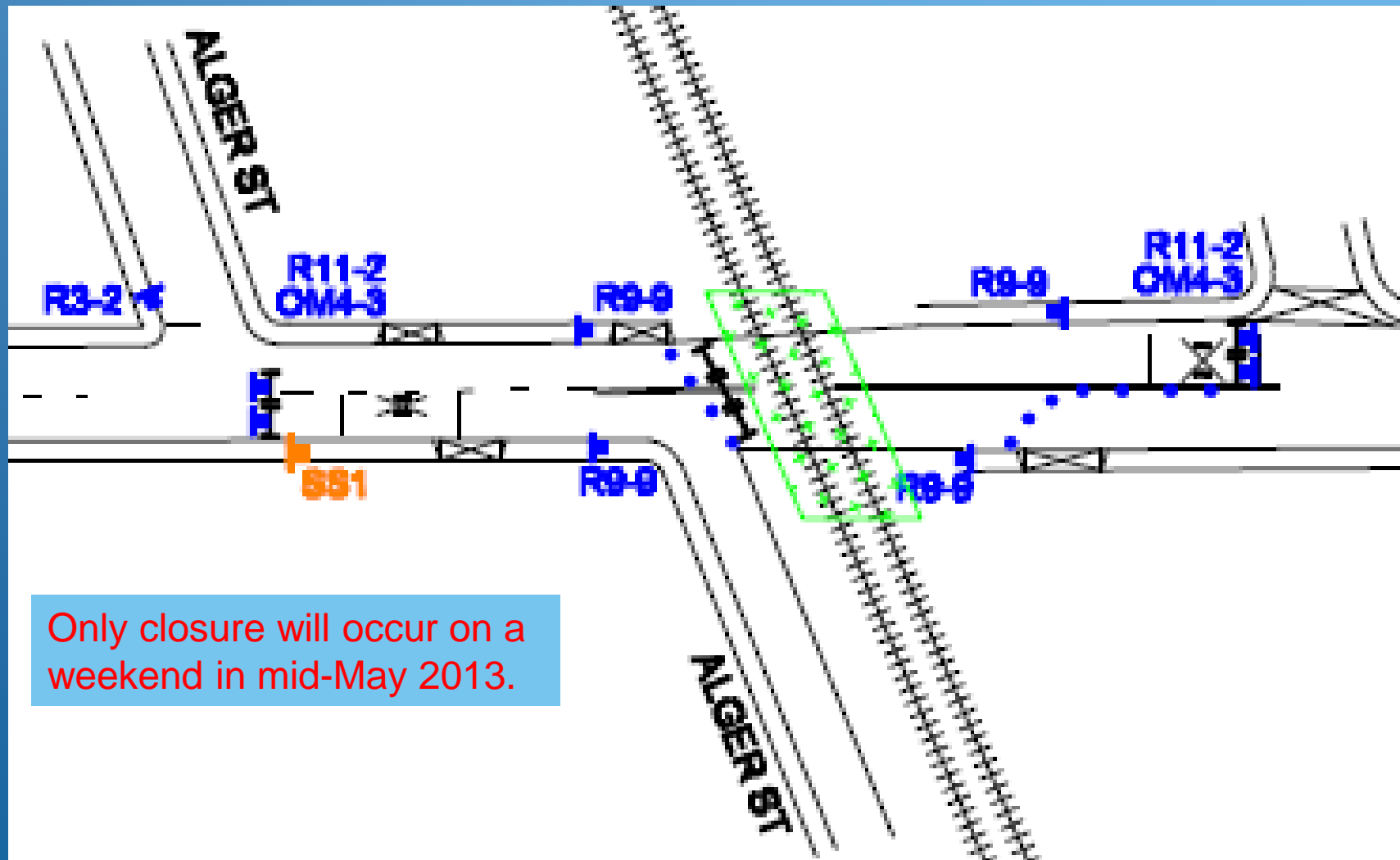
TRAFFIC DETOUR PLAN FOR
BRAZIL ST./BROADWAY CLOSURE AT SAN FERNANDO RD.

Traffic Detour
via
Doran Street

NOT TO SCALE

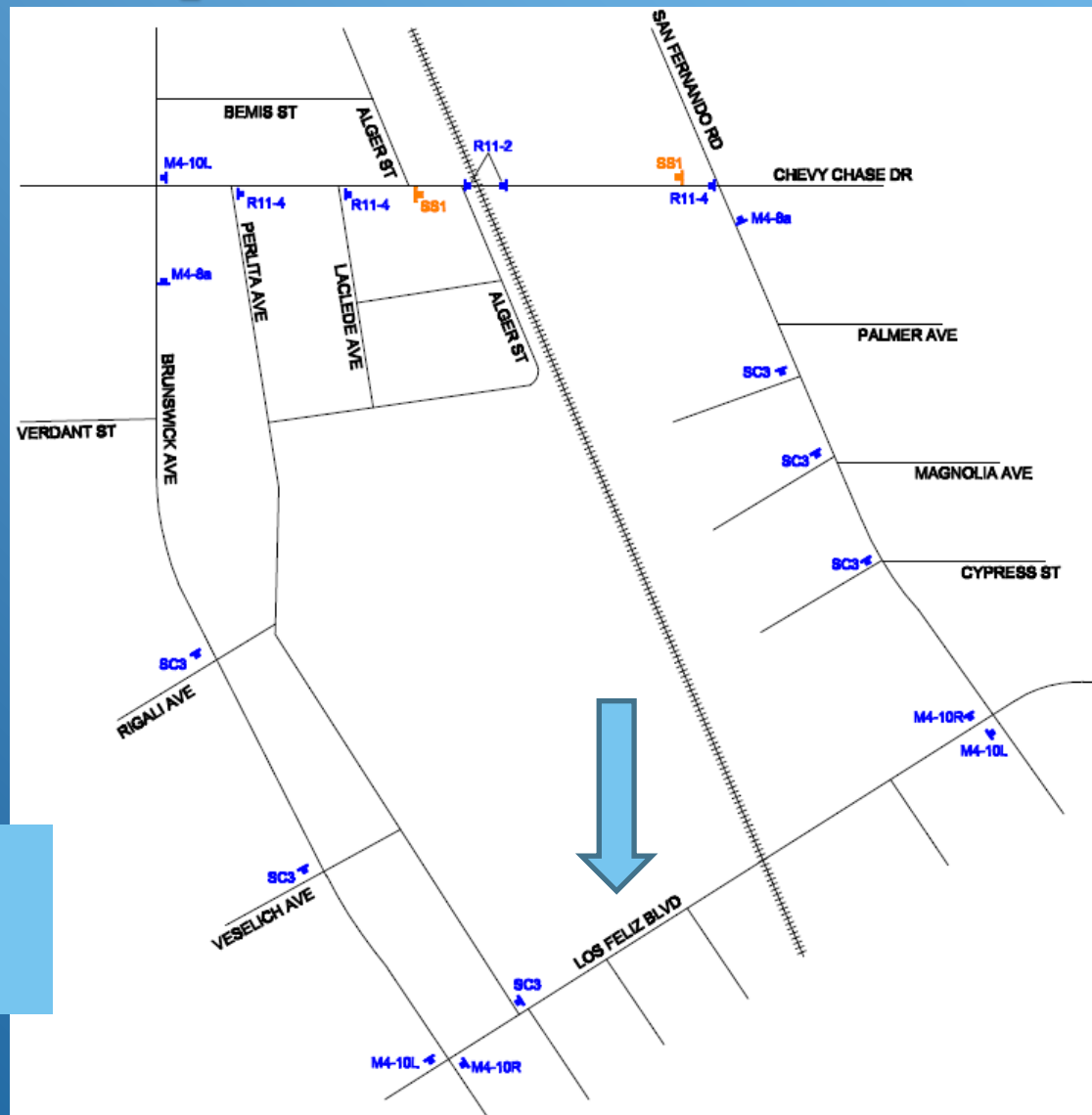


Chevy Chase Closure



Only closure will occur on a weekend in mid-May 2013.

Chevy Chase Detour



Traffic Detour
via
Los Feliz Blvd

Questions & Concerns

SCRRRA:

Kim Chan (909) 394-3280

chank@scrra.net

Comsa Emte:

Armando Cisneros (714) 658 – 5387

armando.cisneros@comsaemte.com