

The Armenian community in Glendale (2000)
 Statistics, City of Glendale, California, Us Census 2000

A- The foreign-born population in Glendale..... 1
 B- Ancestry (first ancestry reported) in Glendale..... 3
 C- Census 2000 Armenian Demographic Profile Highlights in Glendale 5
 D- Map-Percentage of persons declaring Armenian ancestry by the total population per census tract (Glendale) 6
 E- Map-Population declaring Armenian ancestry in Glendale per census tract, 2000..... 7
 F- Map-Percentage of persons declaring Armenian ancestry by the total population per census tract (LA county) 8
 G- Map-Population born in Iran living in Glendale pct, 2000 9
 H- Map-Population born in Armenia living in Glendale pct, 2000 10
 I- Map-Population born in Lebanon living in Glendale pct, 2000 11

A- Place of birth for the foreign-born population

Data-set : Census 2000, Summary File 3-Sample Data
 Table : PCT 19

Total population (estimation 2005, US Census) : **194 620**
 Total foreign-born population : **106 119**

1- Per continent and sub-continent

	Foreign-born population per continent and sub-continent/Total F-B P in Glendale
Europe	6,8%
Asia	72%
Americas	20%
- Latin America	19,3%
Oceania	0,3%
Africa	0,9%

2- Per country

	F-B P per Country/F-B P per continent	F-B P per Country/Total F-B Population in Glendale
<i>Europe</i>		
Russia	40%	1,3%
<i>Asia</i>		
Korea	12,4%	8,9%
Philippines	12,4%	8,9%
Iran	31,6%	22,7%
Lebanon	4,8%	3,5%
Armenia	22,7%	16,3%
<i>Americas</i>		
Mexico	47,6%	9,2%
El Salvador	15%	2,9%

The other continents –Africa and Oceania- are not presented because of their very low-representativeness. As well the most representative countries are presented here.

Conclusions :

- **54,5% of the total population of Glendale are foreign-born.**
- **The majority of the foreign-born population in Glendale was born in Asia, with Iran as principal country of birth (22,7% of the total foreign-born population in Glendale).**
- The next countries of birth in order of importance are Armenia (16,3%), Mexico (9,2%), Korea and Philippines (8,9%).
- The second continent of birth is Latin America with two major countries : Mexico and El Salvador.
- The people born in Iran and Armenia represent 39% of the total foreign-born population and 21,3% of the total population of Glendale.
- **The people born in Iran, Armenia and Lebanon represent 42,4% of the total foreign-born population and 21,5% of the total population of Glendale.**
- **The persons born in Armenia represent 16,3% of the foreign-born persons in Glendale and 8,9% of the total population of Glendale.**

B- Ancestry¹ (first ancestry reported)

Data set : Census 2000 Summary File 3- Sample Data

Table : PCT 16

Total population (estimation 2005, US Census) : **194 620**

Total population who reported a first ancestry : **176 901**

	Number	Ancestry/total population with a first ancestry reported	Ancestry/total population of Glendale
Armenian	51 854	29,3%	26,6%
Other groups	69 845	39,4%	35,8%
English	6941	3,9%	3,5%
German	6873	3,8%	3,5%
Irish	5586	3,1%	2,8%
Iranian	4572	2,5%	2,3%
Italian	4444	2,5%	2,2%
Lebanese	1579	0,8%	0,8%

The first seven ancestries are the most representative. The « Lebanese » ancestry has been added to the purpose of the study, focused on the « Armenian » community.

Conclusions :

- 90% of the total population of Glendale declare an ancestry.
- **The Armenian ancestry –as first declared ancestry- is the most shared ancestry in Glendale, according that the « other groups ancestries » include the Hispanics and the other races.**
- **26,6% of the total population of Glendale declare « Armenian » as first ancestry.**

¹ The data represent self-classification by people according to the ancestry group or groups with which they most closely identify. Ancestry refers to a person's ethnic origin or descent, "roots," heritage, or the place of birth of the person, the person's parents, or their ancestors before their arrival in the United States. Some ethnic identities, such as Egyptian or Polish, can be traced to geographic areas outside the United States, while other ethnicities, such as Pennsylvania German or Cajun, evolved in the United States. The intent of the ancestry question was not to measure the degree of attachment the respondent had to a particular ethnicity. For example, a response of "Irish" might reflect total involvement in an Irish community or only a memory of ancestors several generations removed from the individual. Also, the question was intended to provide data for groups that were not included in the Hispanic origin and race questions. Therefore, although data on all groups are collected, the ancestry data shown in these tabulations are for non-Hispanic and nonrace groups. Hispanic and race groups are included in the "Other groups" category for the ancestry tables in these tabulations. The ancestry question allowed respondents to report one or more ancestry groups, although only the first two were coded. If a response was in terms of a dual ancestry, for example, "Irish English," the person was assigned two codes, in this case one for Irish and another for English (Us Census, www.census.gov)

- Comparing the foreign-born population with the first ancestry declarations is necessary to understand the characteristics of the « Armenian » population in Glendale :

	Armenia (PB)/Armenian (A)	Iran (PB)/Iranian (A)	Lebanon (PB)/Lebanese (A)
Place of Birth (PB)	17 361	24 123	3 719
First Ancestry Declared (A)	51 854	4 572	1 519
Interpretations	<ul style="list-style-type: none"> • 66,6% of the people declaring an Armenian ancestry were possibly not born in Armenia. 	<ul style="list-style-type: none"> • 81,1% of the people born in Iran possibly declared an other first ancestry than « Iranian ». 	<ul style="list-style-type: none"> • 59,2% of the population born in Lebanon possibly declared an other first ancestry than « Lebanese ».

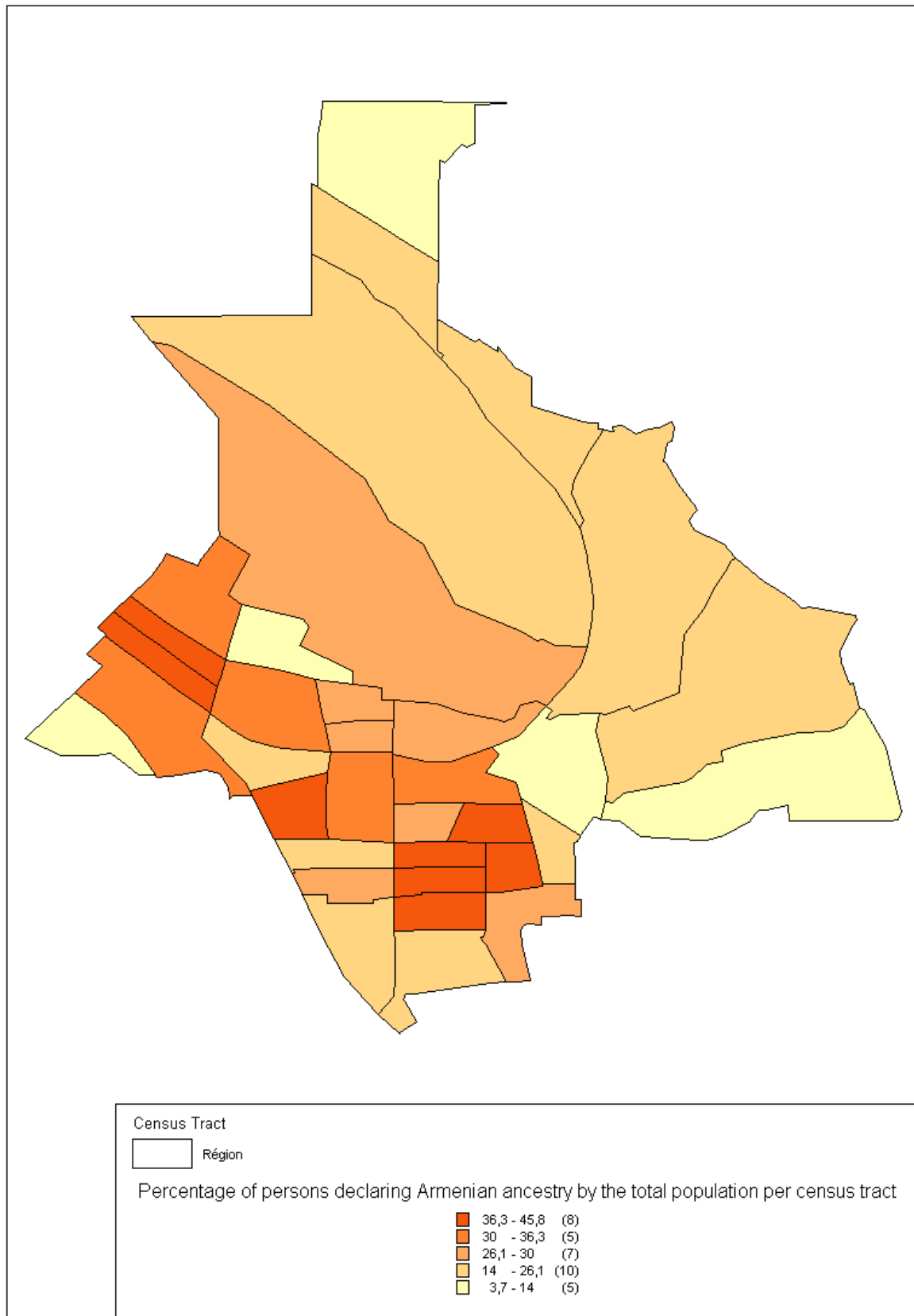
- **The Armenian-Iranians are demographically the dominant people among the foreign-born Armenians in Glendale, followed by the Armenian-Armenians and far behind the Lebanese-Armenians.**
- **75,4% of the population with Armenian ancestry were possibly born in Iran, Armenia or Lebanon.**
- **24,6 % of the population with Armenian ancestry were possibly not born in Iran, Armenia or Lebanon.**

C- Census 2000 Armenian Demographic Profile Highlights

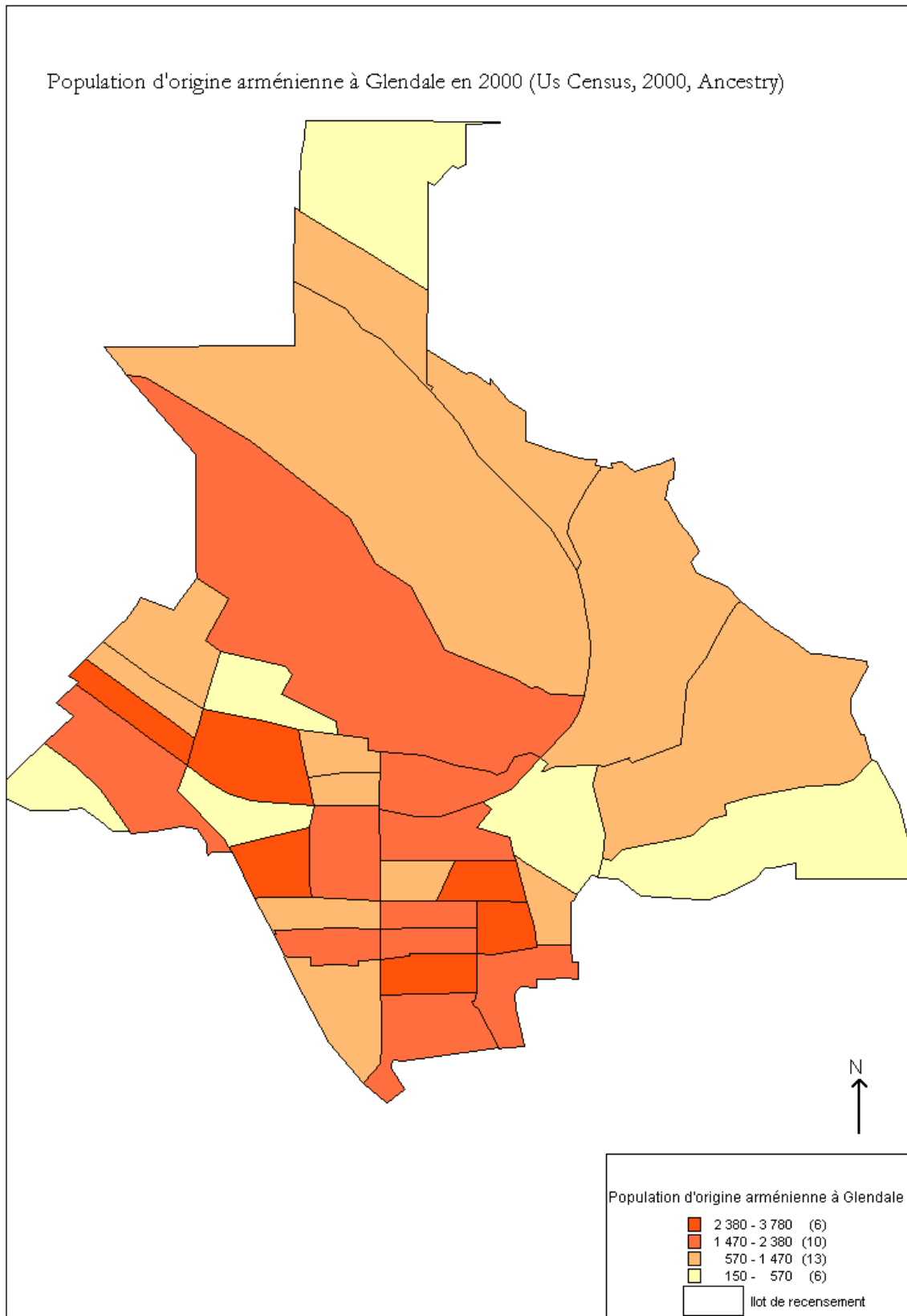
Selected Population Group: Armenian (431-433)

General Characteristics	Armenians	Total Population
Total population	53,840	195,047
Male	26,180	92,784
Female	27,660	102,263
Median age (years)	37	38
Under 5 years	2,383 (4,4%)	11,035 (5,6%)
18 years and over	41,012 (76,2%)	151,587 (77%)
65 years and over	7,123 (13,2%)	27,129 (13,9%)
Household population	53,790	192,175
Group quarters population	50	2,872
Average household size	3	3
Average family size	4	3
Occupied housing units	17,262	71,804
Owner-occupied housing units	4,460 (25,8%)	27,541 (38,3%)
Renter-occupied housing units	12,802 (74,2%)	44,263 (61,6%)
Population 25 years and over	35,647 (66,2%)	135,054 (69,2%)
High school graduate or higher	24,876	106,665
Bachelor's degree or higher	8,317	43,288
Civilian veterans (civilian population 18 years and over)	410	9,025
Disability status (population 5 years and over)	15,378	42,481
Foreign born	45,536 (84,5%)	106,119 (54,4%)
Male, Now married, except separated (population 15 years and over)	13,447	42,839
Female, Now married, except separated (population 15 years and over)	13,070	42,738
Speak a language other than English at home (population 5 years and over)	50,277 (97,7%)	123,239 (66,9%)
In labor force (population 16 years and over)	21,914	91,698
Mean travel time to work in minutes (workers 16 years and over)	27	27
Median household income in 1999 (dollars)	28,505	41,805
Median family income in 1999 (dollars)	32,054	47,633
Per capita income in 1999 (dollars)	14,033	22,227
Families below poverty level	3,211	6,802
Individuals below poverty level	12,425	29,927
Single-family owner-occupied homes	3,257	21,697
Median value (dollars)	341,900	325,700
With a mortgage (dollars)	2,119	1,936
Not mortgaged (dollars)	497	393

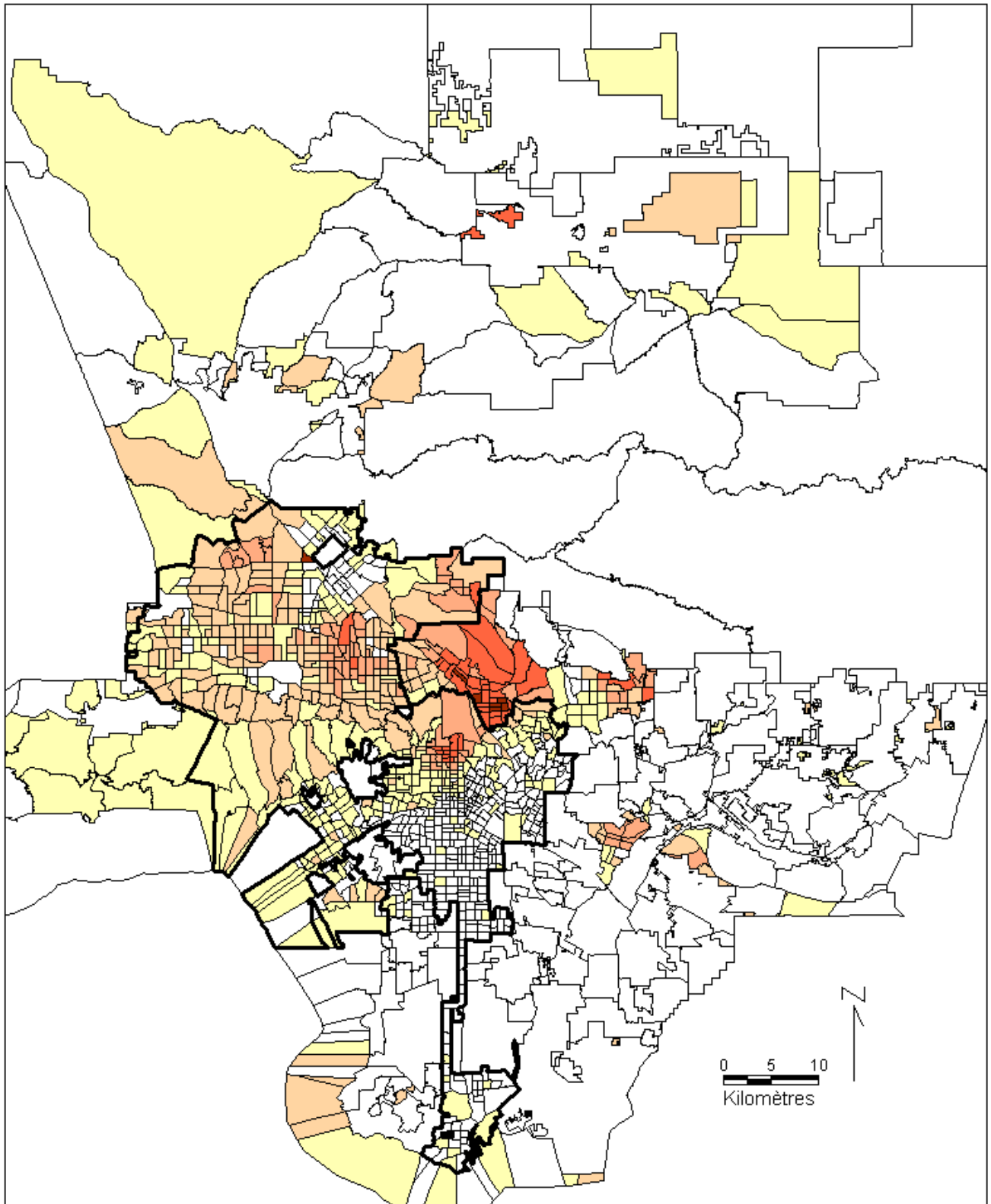
D- Percentage of persons declaring Armenian ancestry by the total population per census tract (Glendale)



E- Population declaring Armenian ancestry in Glendale per census tract, 2000



F- Percentage of persons declaring Armenian ancestry by the total population per census tract (LA county)

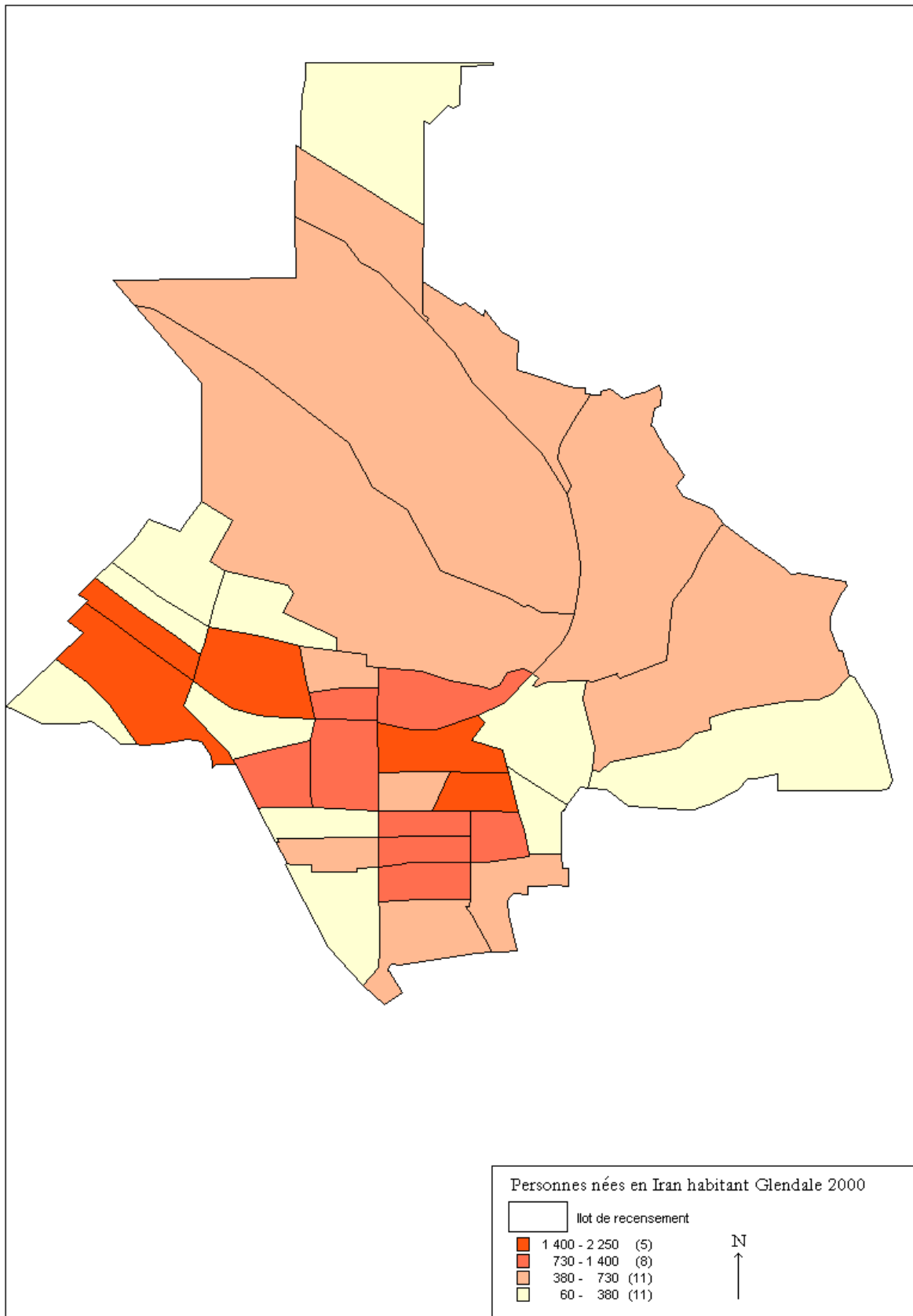


Unité de recensement

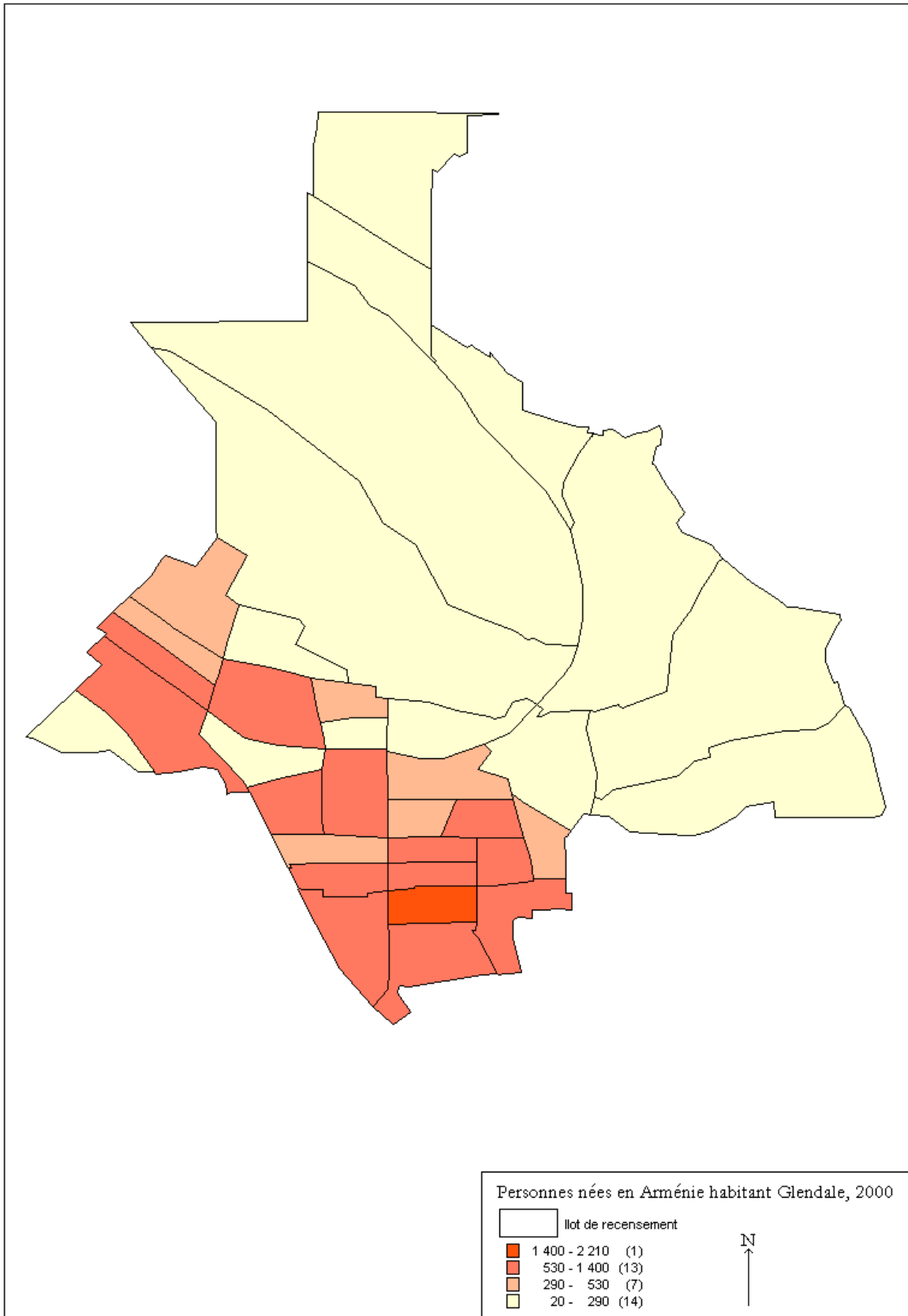
Pourcentage de personnes déclarant une origine arménienne/population totale par unité de recensement

40 - 74	(7)
16,2 - 40	(45)
5 - 16,2	(90)
1,2 - 5	(245)
0 - 1,2	(616)
0 - 0	(1051)

G- Population born in Iran living in Glendale pct, 2000



H- Population born in Armenia living in Glendale pct, 2000



I- Population born in Lebanon living in Glendale pct, 2000

