



WELCOME

To The

COMMUNITY MEETING

For The

**CANADA BOULEVARD
INFRASTRUCTURE IMPROVEMENTS**

August 14th, 2013

Canada Boulevard Infrastructure Improvements Project

ANTICIPATED

CONSTRUCTION START DATE:

Early 2014

PROJECT DURATION:

180-210 Calendar Days

barring any unforeseen conditions

MEETING AGENDA

Project Scope of Work and Locations

Water Main Cleaning & Lining

Water Main Replacement

Storm Drain Repair & Lining

Storm Drain Construction

Concrete and Pavement R&R

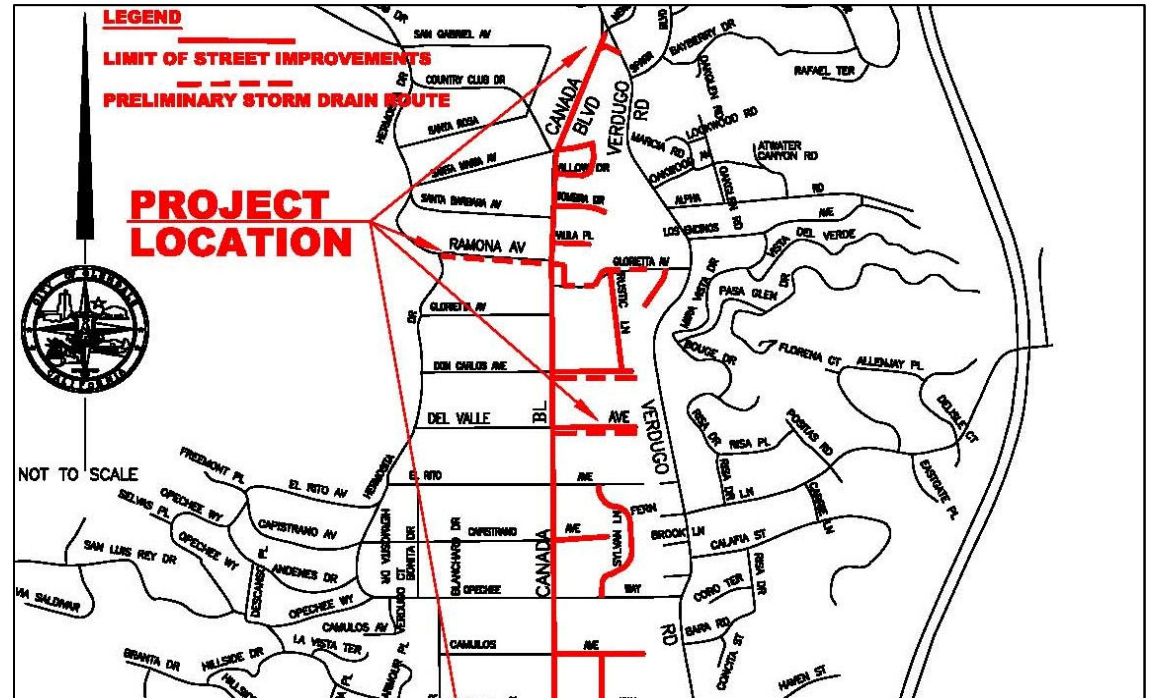
Cold In-Place Recycling of Pavement

Cape Seal and ARAM System III

Public Notification Process

Questions / Comments

PROJECT LOCATION





Resourceful facts

R&R - Remove and Reconstruct

SLURRY SEAL - Made from Oil and Fine Sand Aggregate

ARAM - Asphalt Rubber Aggregate Membrane

AC - Asphalt Concrete

CIR - Cold In-Place Recycling

ARHM - Asphalt Rubber Hot Mix

PCC - *Portland Cement Concrete (for Sidewalks, Curbs, etc.)*

**WATER MAIN WORK
CLEANING & LINING
AND
WATER MAIN REPLACEMENT**





Resourceful fact

HIGH LINE/BYPASS – Water bypass line to maintain services

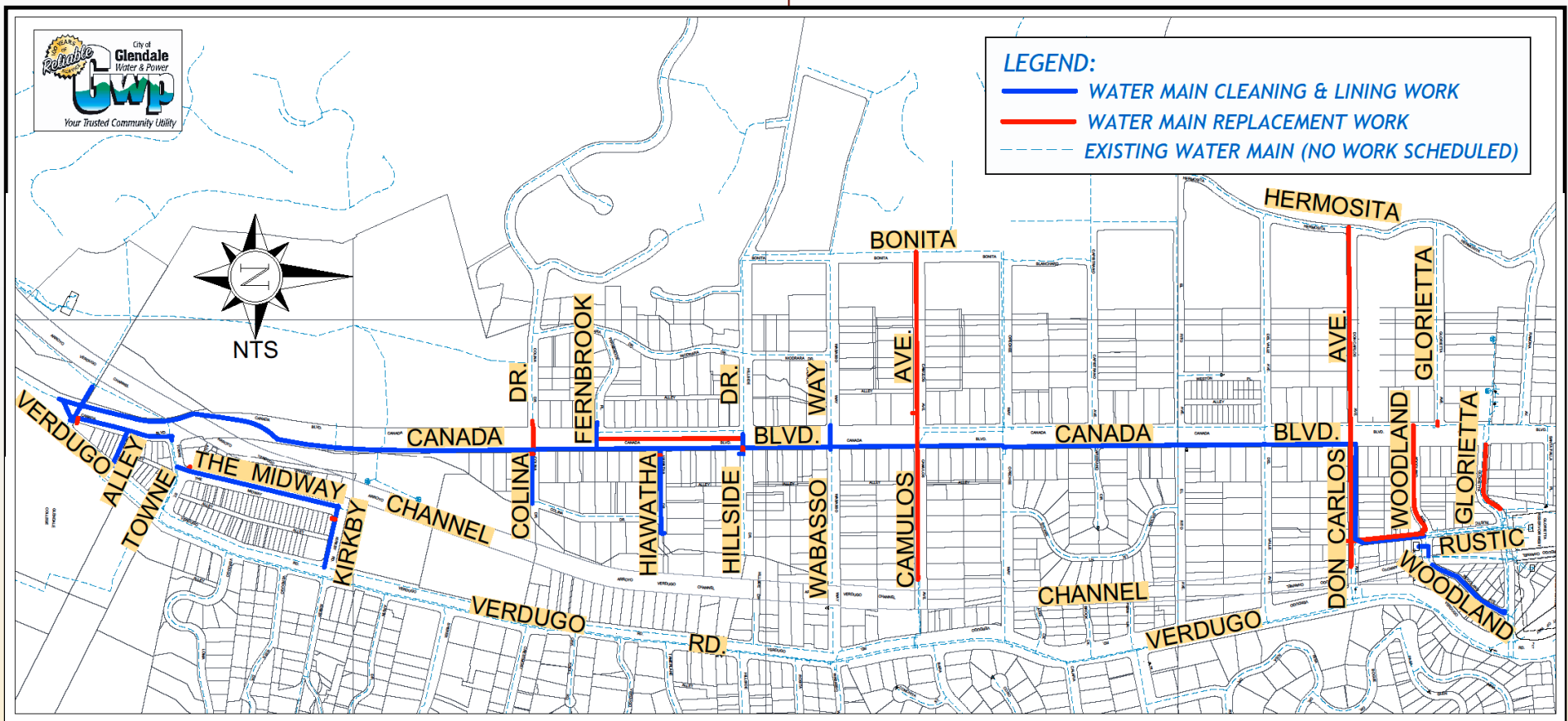
TUBURCULATED – Corroded pipes that decrease capacity

CLEANING & LINING – Cleaning out corrosion and installing non-corrossive lining

PARALLEL REPLACEMENT – Constructing a new water main adjacent to the existing main to services

WATER PROJECT LOCATION MAP

- ▶ 11,000 ft. = Water Main Cleaning & Lining
- ▶ 5,000 ft. = Water Main Replacement



Scope of Water Main Work:

- Replace all existing Fire Hydrant Assemblies,
- Install new Additional Fire Hydrant Assemblies to increase Fire Protection,
- Install New Pipeline Isolation Valves,
- Backfill & Resurface All Excavations.

In Addition:

- For WMC&L, Install Temporary Water By-pass Piping and connect all homes to this piping,
- Clean & Line 11,000 ft. of old 6" through 30" Cast-Iron Water Mains,
- Install 5,000 ft. of new 8" ductile-iron water mains and abandon 5,000 ft. of old 4" cast-iron water mains.

Benefits to the Water System:

- Increased Water Flow Rates and Pressures
- Better Water Quality (Purity, Clarity, Taste)
- Service Life of Pipe is Extended
- Increased Water System Reliability
- Additional Fire Hydrants = Increased Fire Protection.

Temporary Water By-Pass Line



House Water Service Connection
(Connected at Water Meter)

2" Steel Water By-Pass Line

02/28/2008

Water Main Cleaning & Lining



Water Main
Cleaning Device
(Scraper is pulled
through pipe)

Water Main after
Cement Mortar
Lining Process



New Water Main Installation



STREET & STORM DRAIN IMPROVEMENTS



Fiscal Year 2011-2012 Canada Boulevard Infrastructure Street Rehabilitation Adjunct Program

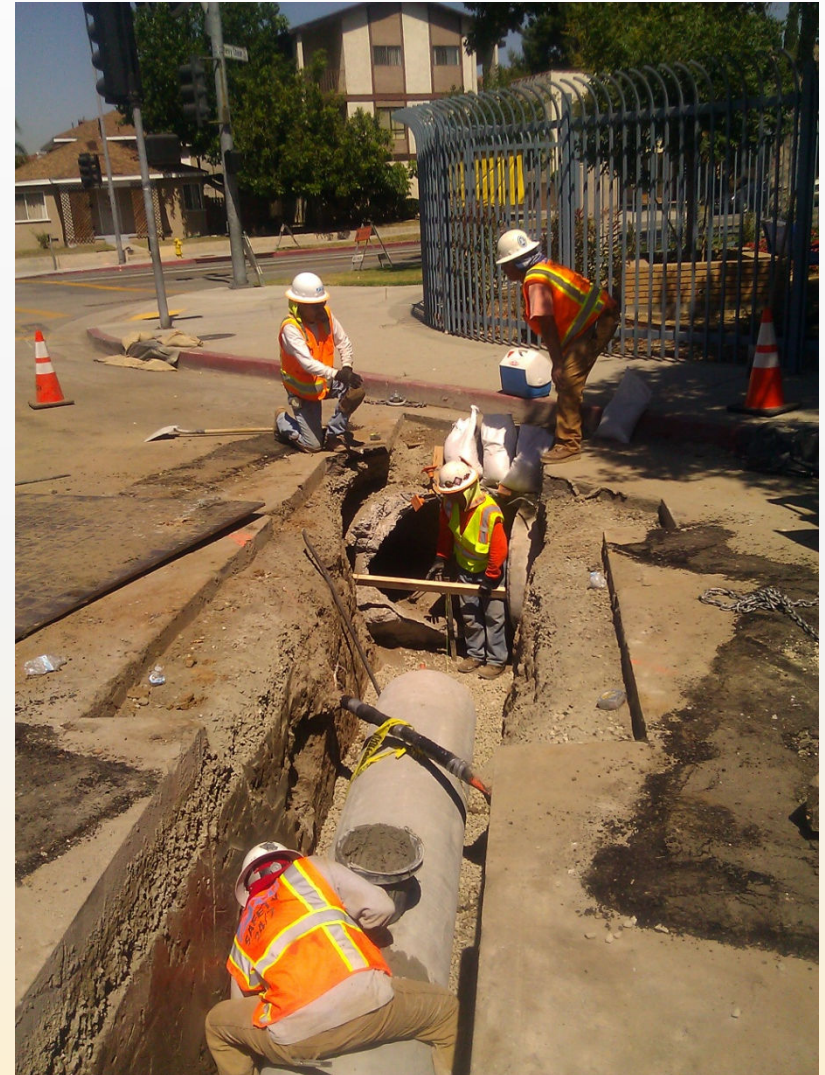
STORM DRAIN

Repair & Lining:

- *Del Valle & Don Carlos, East of Canada*
- *Local Repairs of Deteriorated Pipe*
- *Line Existing Pipe*
- *Improves Pipes with Minor Disruption*

Construction:

- *Verdugo Wash to Glorietta Ave to Canada Bl to Ramona Ave to Hermosita open space*
- *New Pipe, Inlets, Laterals*
- *Large Pipe, Deep/Wide Trenches*
- *Reduces Surface Flows & debris*
- *Improves Wet Weather Driving Safety*



Fiscal Year 2011-2012 Canada Boulevard Infrastructure Street Rehabilitation Joint Program

Construction Timing

Glorietta:

- *Connection to Verdugo Wash between April & October*
- *Approx. 3-4 weeks*
- *Water, Gas & AT&T Relocation Required*

Ramona / Hermosita:

- *Inlet Structure in Hermosita Open Space*
- *Approximately 4-6 weeks*
- *Gas Relocation Required*
- *Canada Blvd 1-2 weeks*



Central Boulevard Infrastructure Street Rehabilitation Program

CONCRETE R&R

Uplifted/Broken/Damaged:

- *Curbs, Gutters, & Sidewalks*
- *Curb Ramps*
- *Driveway Aprons*
- *Cross Gutters*

PAVEMENT R&R

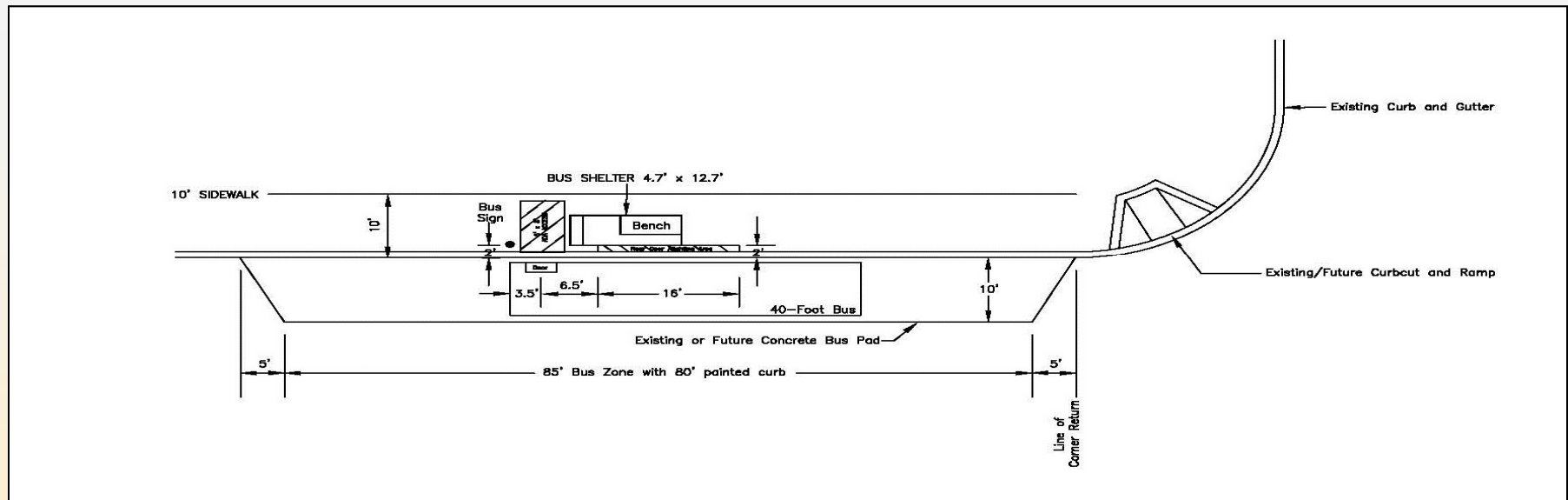
- *Base Failure*
- *Gutter Erosion*



Canal Boulevard Infrastructure Street Rehabilitation Program

ADA COMPLIANCE

- Upgrade Existing & Install New Curb Ramps
- Widen Sidewalks 3'-4' at Driveways for Access
- Upgrade Bus Stops – Move to Far Side & Widen Sidewalk to from 5' to 8'-10'
- Repair Sidewalks



Canada Boulevard Infrastructure Improvements Project

R&R Method

Capistrano Circle, Ramona Ave & Glorietta Ave Reconstruction

- *Excavate existing pavement down to dirt*
- *Place asphalt concrete base course*
- *Place 1.5" ARHM*
- *Three Separate Processes*
- *Begins NEW service life for pavement*
- *Parking and access to your street will be unavailable during operations with limited local access*
- *May be a few days without driveway access*



Canada Boulevard Infrastructure Improvements Project

Cold In-Place Recycling

Used on Canada Blvd to Renew the Roadway with Minimal Construction Impacts

- *Grind 2.5" of existing AC*
- *Recycle 3" of existing pavement in-place*
- *Place 1.5" ARHM*
- *No Trucking, In-Place with "Train"*
- *Can Drive on Immediately*
- *Avoids Full Reconstruction*
- *Approximately 3 Multi-Day Processes*
- *Parking and access to your street will be unavailable during working hours*



Canada Boulevard Infrastructure Improvements Project

CAPE SEAL

Repairs, Seals, and Fills cracks in pavement

- *Colina Drive, Alley 170 (between Camulos & Wabasso), Woodland Avenue*
- *Apply ARAM Pavement to seal the cracks*
- *Skin Patch asphalt on top of ARAM to stabilize*
- *Slurry Seal over Skin Patch to protect pavement*
 - Turn Off Sprinklers*
 - Wet – will damage driveways and cars*
 - Takes 4 hours to dry*
 - Roads closed during construction*



TREES

TREES



Canada Boulevard Infrastructure Improvements Project

Trees

Removals

- *12 trees*
- *Dying, in steep decline, or impacted by project*

Plantings

- *60 trees*
- *California Sycamore*
- *Northern Red Oak*
- *Crape Myrtle*
- *and others for accent/variety*



Northern Red Oak

Canada Boulevard Infrastructure Improvements Project



Crape Myrtle



California Sycamore

TRAFFIC SIGNALS AND SHARROWS



Canada Boulevard Infrastructure Improvements
Project

New Traffic Signals on Canada Blvd. at:

Colina Avenue

Wabasso Way

Del Valle Avenue

Glorietta Avenue (East Leg)

Country Club Drive (Santa Maria)

Canada Boulevard Infrastructure Improvements Project

Sharrows

- *Canada Blvd (Main N-S Corridor)*
- *Glorietta Ave (Path to Verdugo Rd)*
- *Class III Bike Route*
- *Part of Bicycle Transportation Plan*
Approved by City Council



PUBLIC NOTIFICATION PROCESS

1. **Community Meeting** (Today)
2. **City Website** (about 2-4 months before construction for City Council Actions to Advertise/Award Construction Contract)
3. **Director's Letter** (4-6 weeks prior to start of construction)
4. **Contractor's Notification Letter** (2-3 weeks prior)
5. **3-Day Door Hanger** (Notice of Construction 3 days prior)
 - i. **Water Work**
 - ii. **Storm Drain Work**
 - iii. **Concrete R&R, AC Pavement R&R**
 - iv. **Paving**



QUESTIONS / COMMENTS

glendale
california

The logo for Glendale, California, features the word "glendale" in a red, lowercase, sans-serif font, with "california" in a smaller, blue, lowercase, sans-serif font below it. To the right of the text are several colorful swirls in shades of blue, green, yellow, and red.



For questions or general information, please contact:

Kevin Carter

PW Project Manager

(818) 937-8256

Gerald Tom

GPW Project Manager

(818) 551-6906

Yvonne Guerra

PW Community Outreach

(818) 548-3945