



WELCOME

To The

COMMUNITY MEETING

For The

FISCAL YEAR 2013-2014

STREET REHABILITATION PROJECT

Fiscal Year 2013-2014 Street Rehabilitation Project



CITY OF GLENDALE, CA

Community Meeting , August 7th, 2013



Fiscal Year 2013-2014 Street Rehabilitation Project

ANTICIPATED

CONSTRUCTION START DATE:

Mid 2014

PROJECT DURATION:

60-80 Calendar Days

barring any unforeseen conditions

MEETING AGENDA

Project Scope of Work and Locations

Concrete and Pavement R&R

Cape Seal and ARAM System III

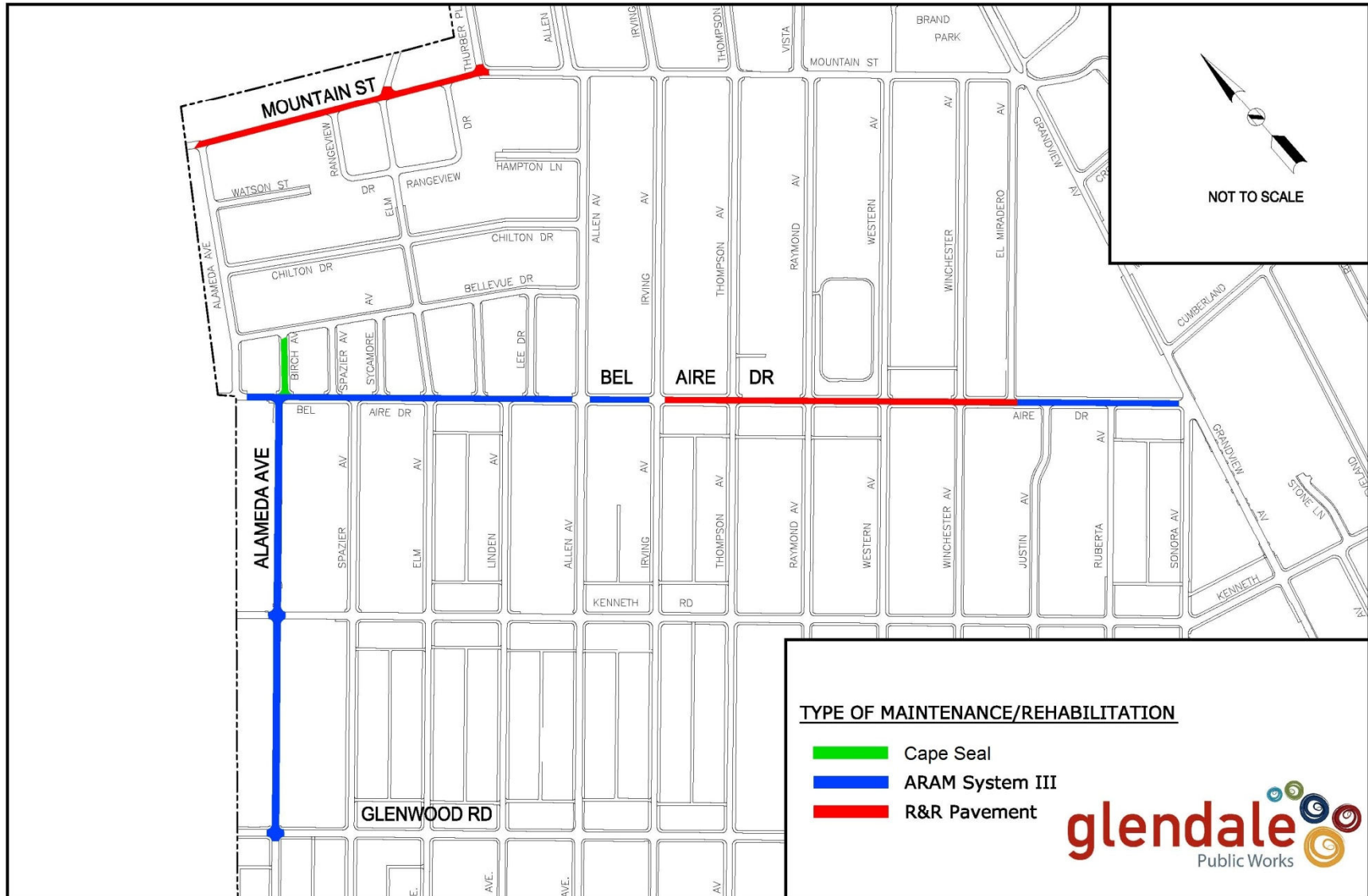
Traffic Circle and Sharrows

New Sidewalk Installation

Public Notification Process

Questions / Comments

PROJECT LOCATION MAP





Resourceful fact

R&R - Remove and Reconstruct

SLURRY SEAL - Made from Oil and Fine Sand Aggregate

ARAM - Asphalt Rubber Aggregate Membrane

AC - Asphalt Concrete

ARHM - Asphalt Rubber Hot Mix

Fiscal Year 2013-2014

Street Rehabilitation Program

CONCRETE

R&R Uplifted/Broken/Damaged:

- *Sidewalks*
- *Curb Ramps*
- *Driveway Aprons*
- *Curb/Gutter*
- *Cross Gutters*



Fiscal Year 2013-2014

Street Rehabilitation Program

PAVEMENT

R&R Pavement:

- *Base Failure*
- *Erosion*
- *Potholes*
- *Service Life*

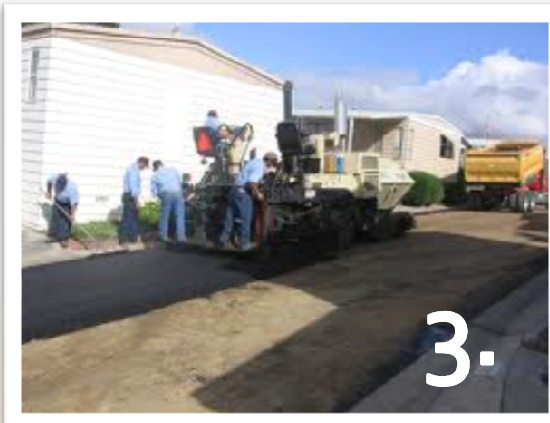


Fiscal Year 2013-2014 Street Rehabilitation Project

R&R Method

Method provides maximum life expectancy of the road

- *Grind existing pavement all the way down to base (dirt or concrete)*
- *Place variable thickness leveling course*
- *Place 1.5" ARHM*
- *Approximately 3-One Day Processes*
- *Begins NEW service life for pavement*
- *Irrigation should be turned off*
- *Parking and access to your street will be unavailable during operations*



Fiscal Year 2013-2014 Street Rehabilitation Program

CAPE SEAL

Repairs, Seals, and Fills cracks in pavement

- *Apply ARAM Pavement to seal the cracks*
- *Skin Patch asphalt on top of ARAM to stabilize*
- *Slurry Seal over Skin Patch to protect pavement*



Fiscal Year 2013-2014 Street Rehabilitation Project

ARAM System III

Method used to improve the ride of the roadway and structural integrity of the pavement

- *Grind 2" of existing AC*
- *Place 0.5" leveling course*
- *Place ARAM*
- *Place 1.5" ARHM*
- *Approximately 4-One Day Processes*
- *Begins NEW service life for pavement*
- *Prevents Excessive AC Pavement R&R*
- *Irrigation should be turned off*
- *Parking and access to your street will be unavailable during the day of ARAM application*



TRAFFIC CIRCLE AND SHARROWS



Fiscal Year 2013-2014 Street Rehabilitation Project

Kenneth Rd. and Alameda Ave.

Before



Fiscal Year 2013-2014 Street Rehabilitation Project

Kenneth Rd. and Alameda Ave.

After



Fiscal Year 2013-2014 Street Rehabilitation Project

Sharrows

- *Mountain St. and Alameda Ave.*
will have Sharrows
- *Class III Bike Route*



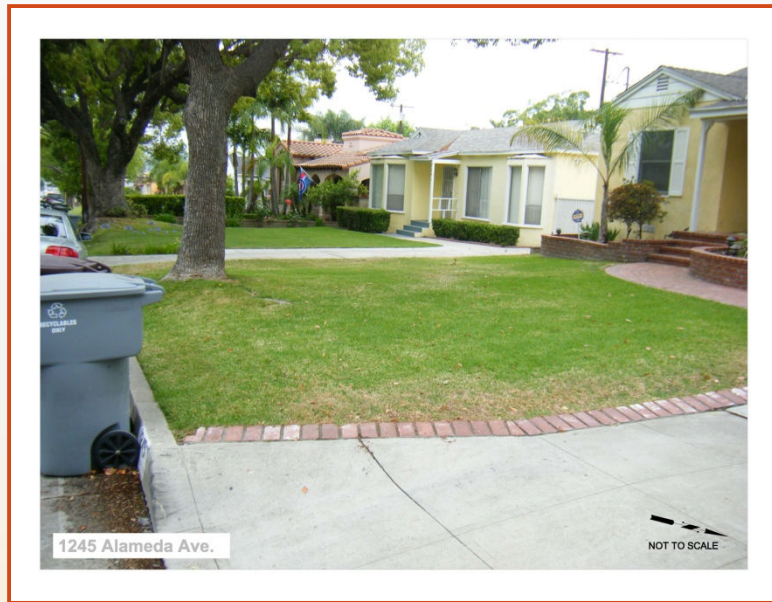
NEW SIDEWALK INSTALLATION



NEW SIDEWALK INSTALLATION

Alameda Avenue

Before



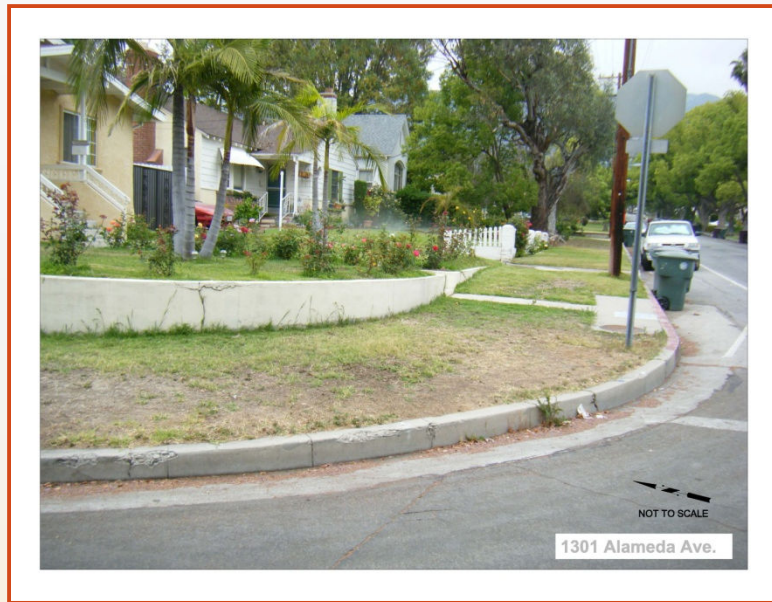
After



NEW SIDEWALK INSTALLATION

Alameda Avenue

Before



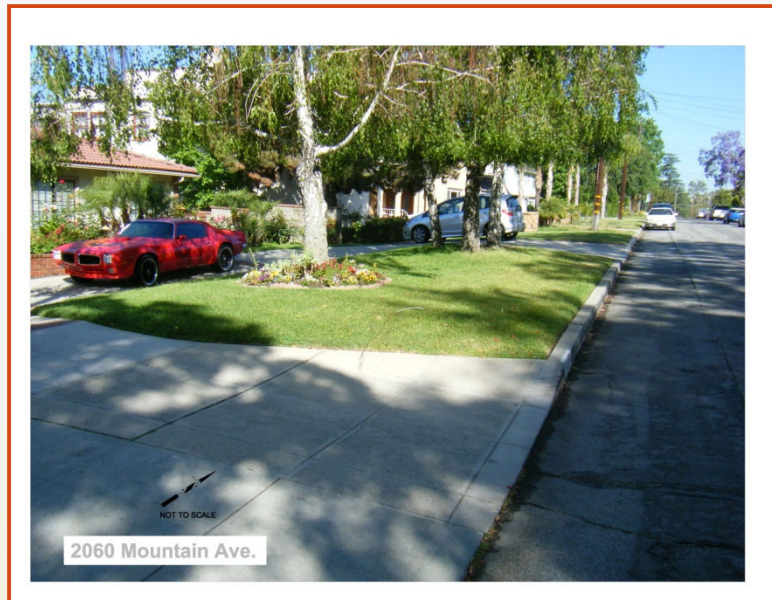
After



NEW SIDEWALK INSTALLATION

Mountain Street

Before



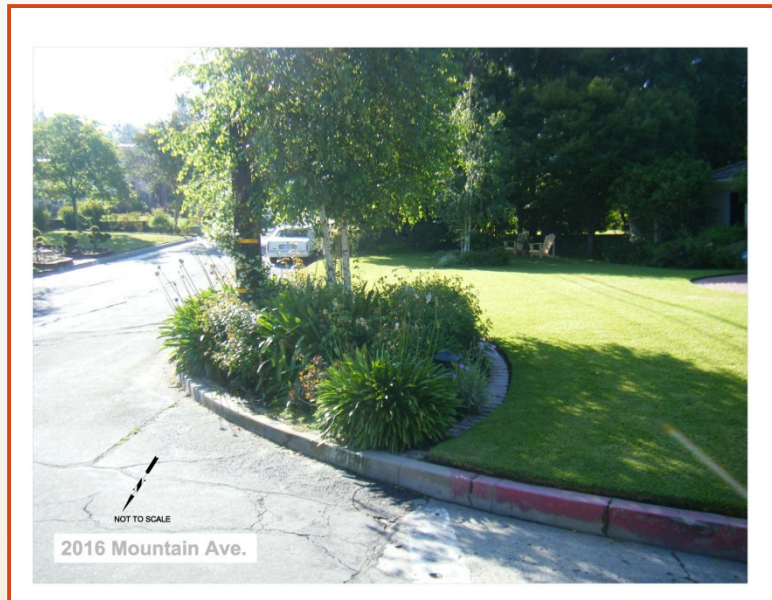
After



NEW SIDEWALK INSTALLATION

Mountain Street

Before



After



PUBLIC NOTIFICATION PROCESS



PUBLIC NOTIFICATION PROCESS:

1. *Community Meeting (Today)*
2. *Survey Outcome Notification*
3. *City Council Approves the Project*
4. *City Website (Bid Advertisement)*
5. *DIRECTOR'S LETTER (2 month prior to start of construction)*
6. *CONTRACTOR'S NOTIFICATION LETTER (2-3 weeks prior)*
 - a) *Notice of Construction Door Hanger (3 days prior)*
 - i. *Concrete R&R, AC Pavement R&R*
 - b) *Notice of Construction Door Hanger (3 days prior)*
 - i. *Slurry Seal/ARAM/ARHM*



QUESTIONS / COMMENTS

glendale
california

The logo for Glendale, California, features the word "glendale" in a red, lowercase, sans-serif font. Below it, the word "california" is written in a smaller, grey, lowercase, sans-serif font. To the right of the text are several colorful swirls in shades of blue, green, yellow, and red.



For questions or general information, please contact:

Arthur Asaturyan

Project Manager

(818) 548-3945

Yvonne Guerra

Community Outreach

(818) 548-3945