

TABLE OF ORGANIZATIONAL STRUCTURE

CITY COUNCIL

** Meets every Tuesday evening at City Hall **

Rafi Manoukian	- Mayor	Apr-03
Gus Gomez	- Councilmember	Apr-03
Frank Quintero	- Councilmember	Apr-05
Dave Weaver	- Councilmember	Apr-05
Bob Yousefian	- Councilmember	Apr-05

OTHER ELECTED OFFICIALS

Ron Borouki	- City Treasurer	Apr-05
Doris Twedt	- City Clerk	Apr-05

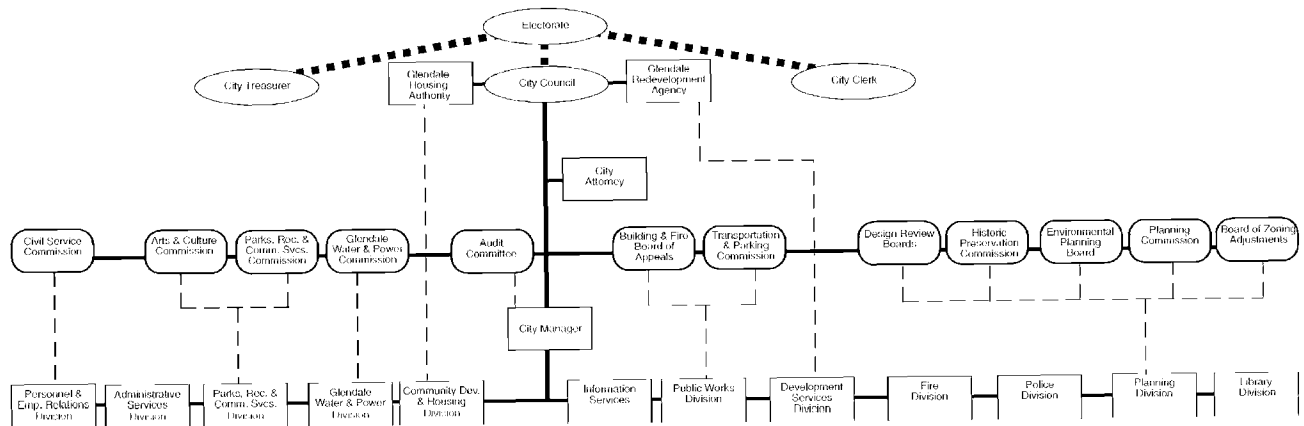
APPOINTED OFFICIALS

Scott H. Howard	- City Attorney
James E. Starbird	- City Manager

EXECUTIVES

Jeanne T. Armstrong	- Development Services	Yasmin Kamria	- Deputy City Manager
Imelda Bickham	- Information Services	Robert K. McFall	- Assistant City Manager
Madalyn A. Blake	- Community Development	Kerry L. Morford	- Public Works
Robert J. Franz	- Administrative Services	Laurel R. Patric	- Libraries
Christopher Gray	- Fire Chief	Russell K. Siverling	- Police Chief
John F. Hoffman	- Personnel	Ignacio Troncoso	- Glendale Water & Power
Nello S. F. Iacono	- Parks & Recreation	Elaine Wilkerson	- Planning

CITY OF GLENDALE TABLE OF ORGANIZATION



Administrative Control
 Electoral Control
 Advisory Control

Boards & Commissions

June 2000