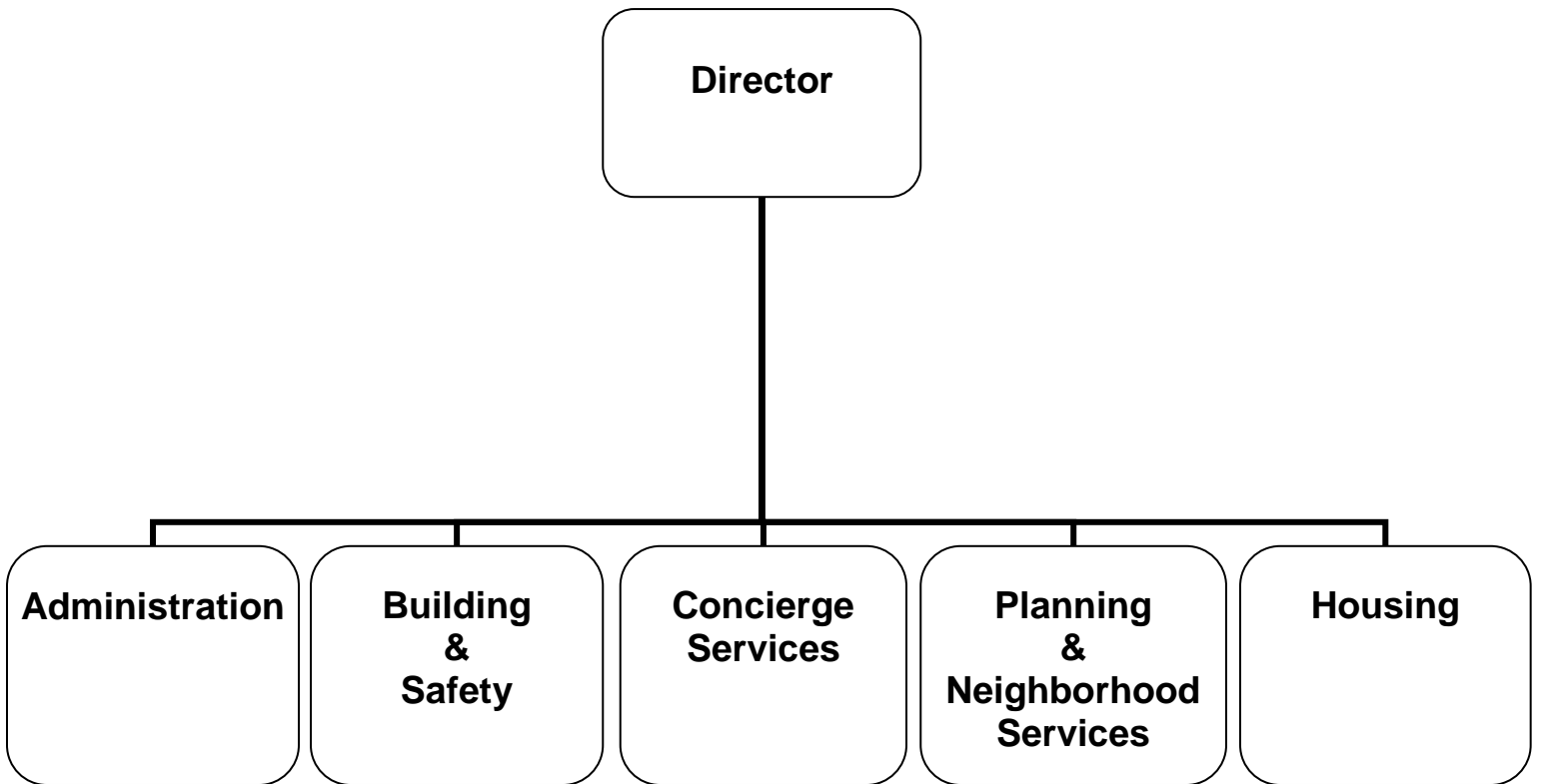


ADOPTED BUDGET 2014-15



COMMUNITY DEVELOPMENT



CITY OF GLENDALE

COMMUNITY DEVELOPMENT

MISSION STATEMENT

Through ongoing dialogue with all segments of the community, the Community Development Department (CDD) captures the community's vision for its future quality of life and translates it into a well-coordinated, internally consistent, streamlined work program, according to the mission of the City Council.

DEPARTMENT DESCRIPTION

CDD is comprised of five divisions:

- **Administration:** Carries out the administrative, clerical, customer service, human resources, budgetary, financial, legislative, and office and records management functions for all operational divisions within CDD.
- **Building & Safety (B&S):** Key components of B&S operations include: building plan review/engineering, inspections, and permit services.
- **Concierge Services:** Ensures expedited review and permitting for large development projects with an emphasis on customer service.
- **Planning & Neighborhood Services (P&NS):** Key components of the P&NS operations include: current planning, long-range planning, mobility planning, design studio, community outreach and education, code compliance, licensing, graffiti removal, and neighborhood problem solving.
- **Housing:** Provides rental assistance and development and preservation of affordable housing for low income households, seniors, and veterans.

The following section provides more detail of the functions of each Division:

The **Administration Division** is responsible for the administrative, clerical, customer service, human resources, budgetary, financial, legislative, and office and records management functions for all operational divisions within CDD. This Division prepares and manages the budget, financial and personnel transactions, conducts research, analysis and legislative review, manages grants, arranges strategic planning efforts, and coordinates special projects. This Division also operates a centralized customer service function for the City, taking in, prioritizing, dispatching and monitoring service requests received from residents via public counters, mail, phone, internet, and mobile applications. Lastly, staff from the Administration Division work closely with the Economic Development Division to assist with winding down the activities of the former Glendale Redevelopment Agency and providing staff support to the Oversight Board.

The **Building & Safety Division** reviews and approves all new building construction, remodels, and changes in use of existing buildings. In addition, this Division performs all private property construction inspections, receives and processes permit applications, enforces all construction related codes as mandated by the State, and assesses appropriate fees for: 1) sewer usage, 2) Glendale Unified School District development, 3) parks and libraries impact, 4) construction and demolition recycling, 5) Green Building Code, and 6) Urban Art. Lastly, this Division serves as staff support to the Building and Fire Board of Appeals.

CITY OF GLENDALE

COMMUNITY DEVELOPMENT

The **Concierge Services** team is part of the City's effort to provide business-friendly economic development programming whereby every City department supports the business community and has economic development priorities woven into their performance goals. In CDD this includes streamlined internal systems to eliminate red tape and inefficiencies, and concierge services to provide additionally expedited review and permitting for large development projects with an emphasis on customer service.

The **Planning & Neighborhood Services Division** is responsible for planning and implementing the future development of the City, and ensuring the quality and maintenance of neighborhoods and the built environment. These efforts are carried out through planning and design, enforcement of codes, education and involvement of residents, maintenance of rights-of-way, and the issuance and monitoring of permits and licenses. Responsibilities include preparing and updating the General and Specific Plans, administering the Zoning Code, processing development applications, such as variances, conditional use permits, subdivisions, and design/environmental review, amongst others and conducting historic planning and mobility planning. In addition, the Division manages and provides support for four Boards and Commissions that provide the opportunity for public input on development applications: 1) Design Review Board, 2) Planning Commission, 3) Historic Preservation Commission, and 4) Environmental Planning Board. Planning Hearing Officer hearings are held on a weekly basis to review items such as variance and conditional use permit requests.

The **Housing Division** develops and preserves affordable housing opportunities for people of low and moderate income. The Division administers three sources of funds: 1) Federal Section 8 Housing Choice Voucher (HCV) for rental assistance, 2) Federal HOME, and 3) Low & Moderate Income Housing Asset Funds. Lastly, this Division provides staff support to the Housing Authority.

RELATIONSHIP TO STRATEGIC GOALS

Exceptional Customer Service

CDD is committed to providing exceptional customer service centered on the principles of speed, quality, consistency, and customer satisfaction through the delivery of seamless service to every customer. CDD demonstrates this goal by operating a centralized customer service function for the City by taking in, prioritizing, dispatching, and monitoring service requests received from residents via public counters, mail, phone, internet and mobile applications. CDD also meets this goal by ensuring expedited review and permitting for large development projects with an emphasis on customer service through the Concierge Services team. CDD staff work to provide accurate and timely notification to interested residents, neighbors, and the general public with mailed notices, website updates, and posting of signs.

Informed & Engaged Community

CDD initiates community programs, such as: 1) "I Love My Neighborhood" youth poster contest, 2) adopt-a-block, 3) a graffiti removal and community clean-up day, and 4) community gardens to involve residents and give them a sense of ownership of their neighborhoods. CDD supports neighborhood improvement efforts including giving out beautification recognition awards (GEM, Halloween, and Winter Holiday) to property owners and neighborhoods and participating in national Keep America Beautiful programs. CDD's outreach and education section teaches environmental stewardship in coordination with the Glendale Unified School District with the Junior Ambassador Program (litter prevention, recycling, storm water pollution prevention) and the Middle School Recycling Challenge. It also publishes a quarterly newsletter to inform and engage community members on community development issues and news.

CITY OF GLENDALE

COMMUNITY DEVELOPMENT

CDD develops appropriate policies, guidelines and procedures necessary to ensure predictable development that is of high quality and reflective of community character. Staff works with various Boards and Commissions for public inclusion in the planning process to ensure that general plans, community plans, zoning and design guidelines reflect community character and effective land use policies. CDD's design review process enables neighborhood involvement in development, including accurate and timely notification to neighbors, and posting of signs and notification to neighborhood homeowners' associations of development projects. Regularly held public forums, workshops, and meetings associated with planning and preservation efforts engage the community. Applicants are advised on planning and building policies to ensure a predictable, open, and transparent entitlement review process.

CDD works on comprehensive planning policies (such as the North Glendale Community Plan, South Glendale Community Plan, and Citywide Design Guidelines), which include input from the community in order to capture the vision of all those who live, work, and recreate in Glendale.

CDD provides extensive outreach regarding common code violations, the City's smoking restrictions, and preservation programs; the latter provides educational resources and information related to the City's development history and heritage.

CDD invests in both public and private projects that help foster a strong sense of community through the creation of public gathering places, community centers, cultural venues, improved pedestrian areas, and diverse housing options. CDD provides guidance and assistance to private development to encourage well-planned, physically, and economically positive projects. These efforts result in a higher quality of life for Glendale residents and visitors.

Safe & Healthy Community

Through its housing, plan check, inspection and code compliance programs, CDD works to ensure that buildings and infrastructure are safe, free of blight, and that residents feel safe and secure in their neighborhoods. As healthcare is Glendale's single largest employment sector, CDD seeks opportunities to increase employment and growth in this industry.

CDD, in collaboration with the Transportation Section of the Public Works Department, continues to implement the Downtown Mobility Study, which promotes greater use of public transit, more walking, and a healthier environment. CDD staff is responsible for implementing the City's "Fresh Air" ordinance, limiting the exposure by residents to toxic second-hand smoke in public spaces and in multi-family rental housing buildings.

Economic Vibrancy

CDD's planning/design, code compliance, and neighborhood programs make Glendale an attractive, functional, and safe environment. This draws businesses and residents to Glendale and assists them to interact successfully. CDD directly assists the business community by transmitting thorough and accurate information to existing and potential new businesses, in addition to processing necessary applications expeditiously.

Glendale's past redevelopment efforts have positioned the community for new private investment, which will continue revitalization from the private sector. CDD is responsible for facilitating this growth and ensuring it is done responsibly and consistent with the community's vision, goals, and objectives.

CITY OF GLENDALE

COMMUNITY DEVELOPMENT

Balanced, Quality Housing

CDD continues to maintain a certified Housing Element to maintain Glendale's eligibility for State funding for housing and transportation projects. CDD monitors compliance with the provisions of SB 375 (Sustainable Communities and Climate Protection Act of 2008) and submittal of annual reports to the State Department of Housing and Community Development as required by State law. In addition, CDD continues to play a key role in housing production by reviewing all housing and construction plans and construction to ensure Building Code and Zoning Code compliance, processing design review applications and, as needed, other discretionary permits. CDD provides individualized guidance from staff urban designers to enable property owners to successfully navigate the design review process. In order to maintain safe housing, CDD inspects rental units for compliance with health and safety standards and processes code compliance cases. Since Glendale is largely a "built-out" city, a critical component of the Housing Element is the required maintenance and preservation of the existing housing stock, which CDD monitors and inspects.

Glendale prides itself on the variety of housing options it offers to its residents. In furthering this attribute, CDD fosters the development of both market rate and affordable housing in appropriate residential areas. CDD initiates and completes affordable housing projects with affordable housing funds. CDD works directly with non-profit and private developers, non-profit agencies, multi-family property owners, residents, and other stakeholders to achieve this goal.

Community Services & Facilities

CDD continues to collaborate with the Community Services & Parks Department to create opportunities to enhance parks and open space, including streetscape, throughout the City. CDD is currently working with multiple City departments to fund improvements for the Central Library. CDD also provides professional peer review and design assistance for the renovation and construction of community facilities.

Infrastructure & Mobility

CDD, in close partnership with the Public Works Transportation staff, continues to implement the policy recommendations of the Downtown Mobility Study, as well as improvements to streetscape, pedestrian and bicyclist safety, and mobility policy throughout the City. In FY 2014-15, the transportation planning function within the Public Works Department will be incorporated with mobility planning under the Design Studio and Outreach Section of the Planning & Neighborhood Services Division of CDD.

CDD invests in public infrastructure projects that address pedestrian, vehicular and cyclist mobility, and participates in transit planning to ensure a broad representation of disciplines related to development and transit. Public Works will manage the Green Streets Demonstration Project, with CDD staff as part of the project team. It's a \$1 Million Proposition 84 grant-funded project near the City's Central Library, which will be comprised of street improvements, mid-block crossings, curb extensions, and greening/landscaping enhancements.

CDD will continue to work on the Tropico grant-funded project adjacent to the City's Train Station. This project is comprised of two phases: 1) policy review on land use, zoning, parking, and the resultant recommended adjustments, and 2) evaluating the impacts of the recommended changes with the Environmental Impact Report (EIR). The EIR is part of the South Glendale Community Plan, focused on the southern portion of the City, south of the 134 Freeway. A major component of the EIR is an update to the City's Transportation Model, which will be a citywide update and not just focused on this area. Lastly, CDD is working with Public Works Transportation staff on a Metro grant-funded project in the downtown area for wayfinding signage for parking, which also includes an update to parking signs in the City's public parking lots.

CITY OF GLENDALE

COMMUNITY DEVELOPMENT

Arts & Culture

CDD promotes the arts through implementation of the Downtown Art & Entertainment (A&E) District and through community programs. CDD promotes the rich culture in Glendale by making significant efforts to reach out to all sectors of the community so all voices can be heard, and ensuring that Glendale continues to be a vibrant place for all its inhabitants.

CDD, in partnership with the Economic Development Division and Public Works Department, will wrap up two projects in the A&E District: Improvements to the Alex Theatre and development of a first-class facility for the Museum of Neon Art (MONA). In 1992, the Alex Theatre, a historic Glendale landmark, was purchased by the former Redevelopment Agency to be renovated and transformed into a performing arts center and the northern anchor for the A&E District. Numerous improvements have been made over the years, and the culminating 6,600-square foot expansion project is slated to be completed in FY 14-15. MONA will be part of the A&E District's southern anchor, which will join an east-west axis connecting to the Central Library, Adult Recreation Center, Park Paseo, and the Americana mixed-use entertainment, shopping, and residential development.

CDD promotes art and community awareness in schools through its "I Love My Neighborhood" poster contest. Using a curriculum developed by CDD and Glendale Unified School District staff, students depict their feelings of neighborhood pride through drawings and paintings and mixed media projects. The grand prize winning poster is utilized in the City's multimedia anti-litter campaign.

Sustainability

CDD oversees environmental review on development projects. In doing so, staff identifies pertinent environmental issues and works with City Departments, outside agencies, and the applicant to identify mitigation strategies that reduce and/or eliminate those impacts.

CDD also works to encourage mixed-use and infill development (which both promote efficient land use) within the community, and supports preservation of open space. CDD implements the *Greener Glendale Plan* by incorporating sustainable policies into General Plan documents, such as Community Plans, as they are amended.

CDD administers the City's Green Building Code, which includes requirements exceeding the minimum standards set by the California Green Building Code. In recent years, all affordable housing projects developed in partnership with CDD exceeded State of California Green Building standards and many have been certified "GreenPoint Rated" by Build It Green, a non-profit organization dedicated to promoting energy efficiency in California.

Lastly, CDD continues to collaborate with City departments on a variety of efforts to promote sustainability, including resource conservation, urban greening, and environmental health. Through the environmental education programs described in the "Informed & Engaged Community" section, CDD supports neighborhood cleanup, community gardens, parks, recycling, and storm water pollution prevention.

**CITY OF GLENDALE
SUMMARY OF APPROPRIATIONS
COMMUNITY DEVELOPMENT DEPARTMENT
FOR THE YEARS ENDING JUNE 30**

	Actual 2012-13	Adopted 2013-14	Revised 2013-14	Adopted 2014-15
General Fund				
CDD Projects (101-180)	\$ 102,389	\$ -	\$ 20,000	\$ -
Administration (101-181)	656,242	2,151,443	2,167,062	2,336,938
Planning & Neighborhood Services (101-182)	1,131,474	3,777,331	3,777,331	4,120,030
Building & Safety (101-183)	-	3,254,804	3,254,804	3,601,022
Planning-Long Range (101-184)	859,051	-	-	-
Planning-Design Studio (101-185)	336,850	-	-	-
Building & Safety (101-521)	3,762,877	-	-	-
Economic Development (101-702)	952,540	-	-	-
Neighborhood Services-Code Enforcement (101-822)	1,398,670	-	-	-
Licensing (101-823)	204,767	-	-	-
Clean & Beautiful Glendale (101-825)	-	-	-	25,734
Graffiti Removal (101-825-1045)	78,310	40,984	40,984	-
Total General Fund	\$ 9,483,170	\$ 9,224,562	\$ 9,260,181	\$ 10,083,724
Other Funds				
CDBG Fund-Neighborhood Services (201-820)	\$ 381,389	\$ 396,000	\$ 396,000	\$ 376,000
Housing Assistance Fund (202-850-10180)	\$ 29,746,611	\$ 30,895,786	\$ 30,895,786	\$ 30,893,768
Home Grant Fund				
HOME Administration (203-714)	\$ 232,062	\$ 361,056	\$ 377,056	\$ 400,865
New Construct Renter-Acq/Rehab (203-840-12230)	1,456,158	900,707	900,707	909,367
Total Home Grant Fund	\$ 1,688,220	\$ 1,261,763	\$ 1,277,763	\$ 1,310,232
Affordable Housing Trust Fund				
Affordable Housing Administration (209-714)	\$ -	\$ -	\$ -	\$ -
Affordable Housing-Housing Development & Preservation (209-840)	-	-	-	-
Total Affordable Housing Trust Fund	\$ -	\$ -	\$ -	\$ -
BEGIN Affordable Homeownership Fund				
BEGIN Administration (212-714)	\$ -	\$ -	\$ -	\$ -
BEGIN Housing Development & Preservation (212-840)	3,393,773	-	-	-
Total BEGIN Affordable Homeownership Fund	\$ 3,393,773	\$ -	\$ -	\$ -
Low&Mod Income Housing Asset Fund				
Low&Mod-Administration (213-714)	\$ 12,218	\$ 90,360	\$ 138,282	\$ 283,418
Low&Mod-Housing Development & Preservation (213-840)	-	524,308	12,800,308	246,300
Total Low&Mod Income Housing Asset Fund	\$ 12,218	\$ 614,668	\$ 12,938,590	\$ 529,718
2011 TABs-Housing Projects Fund (214-714)	\$ 7,504,095	\$ -	\$ -	\$ -
Total Other Funds	\$ 42,726,306	\$ 33,168,217	\$ 45,508,139	\$ 33,109,718
Department Grand Total	\$ 52,209,476	\$ 42,392,779	\$ 54,768,320	\$ 43,193,442

Notes:

- 1) Effective 7/1/2013, Economic Development function moved from the Community Development Department to the Management Services Department.
- 2) Effective 7/1/2013, Building & Safety was assigned new Fund/Org 101-183. Org 521 was inactivated.
- 3) Effective 7/1/2013, Current and Long Range Planning was assigned new Fund/Org/Program 101-182-1004. Org 184 was inactivated.
- 4) Effective 7/1/2013, Design Studio and NS Outreach and Education was assigned new Fund/Org/Program 101-182-1005. Org 185 was inactivated.
- 5) Effective 7/1/2013, NS Code Enforcement and NS Licensing was assigned new Fund/Org/Program 101-182-1007. Org 822 and Org 823 were inactivated.
- 6) Effective 7/1/2014, Org 825 was renamed Clean & Beautiful Glendale (CBG).

**CITY OF GLENDALE
COMMUNITY DEVELOPMENT DEPARTMENT
GENERAL FUND - CDD PROJECTS
101-180**

		Actual 2012-13	Adopted 2013-14	Revised 2013-14	Adopted 2014-15
Salaries & Benefits					
41300	Hourly wages	\$ -	\$ -	\$ -	\$ 13,000
Various	Benefits	-	-	-	881
42700, 42702	PERS Retirement	-	-	-	524
42701	PERS cost sharing	-	-	-	(90)
42799	Salary charges in (out)	-	-	-	(14,315)
Salaries & Benefits Total		<u>\$ -</u>	<u>\$ -</u>	<u>\$ -</u>	<u>\$ -</u>
Maintenance & Operation					
43110	Contractual services	\$ 101,973	\$ -	\$ -	\$ -
44200	Advertising	18	-	-	-
44650	Training	110	-	-	-
44750	Liability Insurance	-	-	-	491
45250	Office supplies	288	-	-	-
49050	Charges-other depts	-	-	-	(491)
Maintenance & Operation Total		<u>\$ 102,389</u>	<u>\$ -</u>	<u>\$ -</u>	<u>\$ -</u>
Capital Improvement					
51200	Other improvements	\$ -	\$ -	\$ 20,000	\$ -
Capital Improvement Total		<u>\$ -</u>	<u>\$ -</u>	<u>\$ 20,000</u>	<u>\$ -</u>
TOTAL		<u>\$ 102,389</u>	<u>\$ -</u>	<u>\$ 20,000</u>	<u>\$ -</u>

**CITY OF GLENDALE
COMMUNITY DEVELOPMENT DEPARTMENT
GENERAL FUND - ADMINISTRATION
101-181**

		Actual 2012-13	Adopted 2013-14	Revised 2013-14	Adopted 2014-15
Salaries & Benefits					
41100	Salaries	\$ 308,786	\$ 1,344,445	\$ 1,344,445	\$ 1,366,256
41200	Overtime	(356)	-	-	-
41300	Hourly wages	32,316	97,800	97,800	116,844
Various	Benefits	98,892	395,361	395,361	441,696
42700, 42702	PERS Retirement	52,012	233,392	233,392	258,854
42701	PERS cost sharing	(6,862)	(28,293)	(28,293)	(44,472)
Salaries & Benefits Total		\$ 484,788	\$ 2,042,705	\$ 2,042,705	\$ 2,139,178
Maintenance & Operation					
43110	Contractual services	\$ 14,777	\$ 1,800	\$ 1,800	\$ 15,000
43128	Developer contract	-	-	15,619	-
44120	Repairs to office equip	80	500	500	500
44351	Fleet / equip rental charge	8,193	4,209	4,209	4,551
44352	ISD service charge	90,751	42,022	42,022	113,646
44450	Postage	23,807	200	200	200
44550	Travel	444	-	-	-
44650	Training	5,569	300	300	300
44750	Liability Insurance	10,162	52,207	52,207	56,063
44751	Insurance/surety bond premium	1,966	-	-	-
44800	Membership & dues	1,334	-	-	-
45050	Periodicals & newspapers	190	-	-	-
45250	Office supplies	12,853	5,000	5,000	5,000
45350	General supplies	17	500	500	500
46900	Business meetings	1,067	1,500	1,500	1,500
47000	Miscellaneous	244	500	500	500
Maintenance & Operation Total		\$ 171,454	\$ 108,738	\$ 124,357	\$ 197,760
TOTAL		\$ 656,242	\$ 2,151,443	\$ 2,167,062	\$ 2,336,938

**CITY OF GLENDALE
COMMUNITY DEVELOPMENT DEPARTMENT
GENERAL FUND - PLANNING & NEIGHBORHOOD SERVICES*
101-182**

		Actual 2012-13	Adopted 2013-14	Revised 2013-14	Adopted 2014-15
Salaries & Benefits					
41100	Salaries	\$ 768,501	\$ 2,298,505	\$ 2,298,505	\$ 2,397,643
41300	Hourly wages	40,573	153,331	153,331	182,680
Various	Benefits	160,189	565,739	565,739	617,226
42700, 42702	PERS Retirement	121,576	387,809	387,809	439,926
42701	PERS cost sharing	(23,097)	(62,811)	(62,811)	(75,576)
Salaries & Benefits Total		\$ 1,067,742	\$ 3,342,573	\$ 3,342,573	\$ 3,561,899
Maintenance & Operation					
43110	Contractual services	\$ -	\$ 105,000	\$ 105,000	\$ 303,000
44100	Repairs to equipment	-	1,800	1,800	1,800
44200	Advertising	-	10,000	10,000	10,000
44351	Fleet / equip rental charge	-	-	-	37,592
44352	ISD service charge	34,972	145,097	145,097	9,105
44450	Postage	-	30,000	30,000	30,000
44550	Travel	-	1,500	1,500	1,500
44650	Training	-	5,000	5,000	5,000
44750	Liability Insurance	24,087	88,761	88,761	97,534
44751	Insurance/surety bond premium	4,673	-	-	-
44760	Regulatory	-	100	100	100
44800	Membership & dues	-	15,900	15,900	15,900
45100	Books	-	2,900	2,900	2,900
45150	Furniture & equipment	-	1,000	1,000	1,000
45250	Office supplies	-	11,000	11,000	11,000
45300	Small tools	-	3,000	3,000	3,000
45350	General supplies	-	8,000	8,000	23,000
46900	Business meetings	-	2,700	2,700	2,700
47000	Miscellaneous	-	3,000	3,000	3,000
Maintenance & Operation Total		\$ 63,732	\$ 434,758	\$ 434,758	\$ 558,131
TOTAL		\$ 1,131,474	\$ 3,777,331	\$ 3,777,331	\$ 4,120,030

Note:

* Effective 7/1/2013, Current and Long Range Planning was assigned new Fund/Org/Program 101-182-1004, Org 184 was inactivated; Design Studio and NS Outreach and Education was assigned new Fund/Org/Program 101-182-1005, Org 185 was inactivated; NS Code Enforcement and NS Licensing was assigned new Fund/Org/Program 101-182-1007, Org 822 and Org 823 were inactivated.

**CITY OF GLENDALE
COMMUNITY DEVELOPMENT DEPARTMENT
GENERAL FUND - BUILDING & SAFETY*
101-183**

		Actual 2012-13	Adopted 2013-14	Revised 2013-14	Adopted 2014-15
Salaries & Benefits					
41100	Salaries	\$ -	\$ 1,708,162	\$ 1,708,162	\$ 1,709,142
41200	Overtime	-	125,000	125,000	125,000
41300	Hourly wages	-	35,741	35,741	276,245
Various	Benefits	-	481,126	481,126	602,815
42700, 42702	PERS Retirement	-	276,430	276,430	337,414
42701	PERS cost sharing	-	(38,050)	(38,050)	(57,962)
Salaries & Benefits Total		\$ -	\$ 2,588,409	\$ 2,588,409	\$ 2,992,654
Maintenance & Operation					
43110	Contractual services	\$ -	\$ 225,900	\$ 225,900	\$ 226,000
44120	Repairs to office equip	-	6,200	6,200	6,200
44352	ISD service charge	-	128,340	128,340	158,098
44450	Postage	-	500	500	500
44550	Travel	-	5,000	5,000	5,000
44650	Training	-	27,500	27,500	27,500
44750	Liability Insurance	-	67,655	67,655	79,770
44800	Membership & dues	-	2,000	2,000	2,000
45100	Books	-	27,000	27,000	27,000
45150	Furniture & equipment	-	27,500	27,500	27,500
45200	Maps & blue prints	-	300	300	300
45250	Office supplies	-	40,000	40,000	40,000
45300	Small tools	-	500	500	500
45350	General supplies	-	6,500	6,500	6,500
47000	Miscellaneous	-	1,500	1,500	1,500
Maintenance & Operation Total		\$ -	\$ 566,395	\$ 566,395	\$ 608,368
Capital Outlay					
51000	Capital outlay	\$ -	\$ 100,000	\$ 100,000	\$ -
Capital Outlay Total		\$ -	\$ 100,000	\$ 100,000	\$ -
TOTAL		\$ -	\$ 3,254,804	\$ 3,254,804	\$ 3,601,022

Note:

* Effective 7/1/2013, Building & Safety was assigned new Fund/Org 101-183. Org 521 was inactivated.

**CITY OF GLENDALE
COMMUNITY DEVELOPMENT DEPARTMENT
GENERAL FUND - PLANNING-LONG RANGE*
101-184**

		Actual 2012-13	Adopted 2013-14	Revised 2013-14	Adopted 2014-15
Salaries & Benefits					
41100	Salaries	\$ 600,500	\$ -	\$ -	\$ -
Various	Benefits	137,350	-	-	-
42700, 42702	PERS Retirement	94,471	-	-	-
42701	PERS cost sharing	(18,021)	-	-	-
Salaries & Benefits Total		\$ 814,300	\$ -	\$ -	\$ -
Maintenance & Operation					
44352	ISD service charge	\$ 21,394	\$ -	\$ -	\$ -
44700	Computer software	2,593	-	-	-
44750	Liability Insurance	18,092	-	-	-
44751	Insurance/surety bond premium	2,672	-	-	-
Maintenance & Operation Total		\$ 44,751	\$ -	\$ -	\$ -
TOTAL		\$ 859,051	\$ -	\$ -	\$ -

Note:

* Effective 7/1/2013, Long Range Planning was assigned new Fund/Org/Program 101-182-1004. Org 184 was inactivated.

**CITY OF GLENDALE
COMMUNITY DEVELOPMENT DEPARTMENT
GENERAL FUND - PLANNING-DESIGN STUDIO*
101-185**

		Actual 2012-13	Adopted 2013-14	Revised 2013-14	Adopted 2014-15
Salaries & Benefits					
41100	Salaries	\$ 233,027	\$ -	\$ -	\$ -
41300	Hourly wages	15,385	-	-	-
Various	Benefits	40,204	-	-	-
42700, 42702	PERS Retirement	36,648	-	-	-
42701	PERS cost sharing	(6,991)	-	-	-
Salaries & Benefits Total		\$ 318,273	\$ -	\$ -	\$ -
Maintenance & Operation					
44200	Advertising	\$ 276	\$ -	\$ -	\$ -
44352	ISD service charge	7,333	-	-	-
44550	Travel	(400)	-	-	-
44650	Training	90	-	-	-
44700	Computer software	2,223	-	-	-
44750	Liability Insurance	7,501	-	-	-
44751	Insurance/surety bond premium	1,014	-	-	-
45250	Office supplies	105	-	-	-
45350	General supplies	435	-	-	-
Maintenance & Operation Total		\$ 18,577	\$ -	\$ -	\$ -
TOTAL		\$ 336,850	\$ -	\$ -	\$ -

Note:

* Effective 7/1/2013, Design Studio and NS Outreach and Education was assigned new Fund/Org/Program 101-182-1005. Org

**CITY OF GLENDALE
COMMUNITY DEVELOPMENT DEPARTMENT
GENERAL FUND - BUILDING & SAFETY*
101-521**

		Actual 2012-13	Adopted 2013-14	Revised 2013-14	Adopted 2014-15
Salaries & Benefits					
41100	Salaries	\$ 2,041,220	\$ -	\$ -	\$ -
41200	Overtime	41,203	-	-	-
41300	Hourly wages	29,390	-	-	-
Various	Benefits	619,742	-	-	-
42700, 42702	PERS Retirement	321,022	-	-	-
42701	PERS cost sharing	(42,885)	-	-	-
Salaries & Benefits Total		\$ 3,009,692	\$ -	\$ -	\$ -
Maintenance & Operation					
43110	Contractual services	\$ 118,416	\$ -	\$ -	\$ -
44120	Repairs to office equip	20	-	-	-
44352	ISD service charge	525,651	-	-	-
44450	Postage	146	-	-	-
44550	Travel	60	-	-	-
44650	Training	8,649	-	-	-
44750	Liability Insurance	63,203	-	-	-
44751	Insurance/surety bond premium	10,973	-	-	-
44800	Membership & dues	3,880	-	-	-
45100	Books	5,110	-	-	-
45150	Furniture & equipment	1,316	-	-	-
45250	Office supplies	16,213	-	-	-
47000	Miscellaneous	(452)	-	-	-
Maintenance & Operation Total		\$ 753,185	\$ -	\$ -	\$ -
TOTAL		\$ 3,762,877	\$ -	\$ -	\$ -

Note:

* Effective 7/1/2013, Building & Safety was assigned new Fund/Org 101-183. Org 521 was inactivated.

**CITY OF GLENDALE
COMMUNITY DEVELOPMENT DEPARTMENT
GENERAL FUND - ECONOMIC DEVELOPMENT*
101-702**

		Actual 2012-13	Adopted 2013-14	Revised 2013-14	Adopted 2014-15
Salaries & Benefits					
41100	Salaries	\$ 538,620	\$ -	\$ -	\$ -
41200	Overtime	(481)	-	-	-
41300	Hourly wages	88,510	-	-	-
Various	Benefits	148,497	-	-	-
42700, 42702	PERS Retirement	84,885	-	-	-
42701	PERS cost sharing	(14,394)	-	-	-
Salaries & Benefits Total		\$ 845,637	\$ -	\$ -	\$ -
Maintenance & Operation					
43110	Contractual services	\$ 1,225	\$ -	\$ -	\$ -
44100	Repairs to equipment	-	-	-	-
44120	Repairs to office equip	-	-	-	-
44200	Advertising	5,667	-	-	-
44352	ISD service charge	46,912	-	-	-
44450	Postage	7	-	-	-
44550	Travel	-	-	-	-
44650	Training	577	-	-	-
44750	Liability Insurance	19,276	-	-	-
44751	Insurance/surety bond premium	8,439	-	-	-
44800	Membership & dues	12,074	-	-	-
45050	Periodicals & newspapers	399	-	-	-
45250	Office supplies	-	-	-	-
45350	General supplies	92	-	-	-
45400	Reports & publications	2,463	-	-	-
45450	Printing and graphics	3,438	-	-	-
46900	Business meetings	1,472	-	-	-
47000	Miscellaneous	4,960	-	-	-
47010	Discount earned & lost	(98)	-	-	-
Maintenance & Operation Total		\$ 106,903	\$ -	\$ -	\$ -
TOTAL		\$ 952,540	\$ -	\$ -	\$ -

Note:

* Effective 7/1/2013, Economic Development function moved from the Community Development Department to the Management Services Department.

**CITY OF GLENDALE
COMMUNITY DEVELOPMENT DEPARTMENT
GENERAL FUND - NEIGHBORHOOD SERVICES-CODE ENFORCEMENT*
101-822**

		Actual 2012-13	Adopted 2013-14	Revised 2013-14	Adopted 2014-15
Salaries & Benefits					
41100	Salaries	\$ 688,003	\$ -	\$ -	\$ -
41200	Overtime	4,849	-	-	-
41300	Hourly wages	164,987	-	-	-
Various	Benefits	195,754	-	-	-
42700, 42702	PERS Retirement	131,752	-	-	-
42701	PERS cost sharing	(16,025)	-	-	-
Salaries & Benefits Total		\$ 1,169,320	\$ -	\$ -	\$ -
Maintenance & Operation					
43110	Contractual services	\$ 57,709	\$ -	\$ -	\$ -
44100	Repairs to equipment	695	-	-	-
44120	Repairs to office equip	40	-	-	-
44200	Advertising	1,739	-	-	-
44351	Fleet / equip rental charge	14,751	-	-	-
44352	ISD service charge	88,260	-	-	-
44450	Postage	4,863	-	-	-
44550	Travel	1,042	-	-	-
44650	Training	615	-	-	-
44700	Computer software	892	-	-	-
44750	Liability Insurance	25,734	-	-	-
44751	Insurance/surety bond premium	6,149	-	-	-
44760	Regulatory	100	-	-	-
44800	Membership & dues	95	-	-	-
45150	Furniture & equipment	1,000	-	-	-
45250	Office supplies	3,519	-	-	-
45350	General supplies	14,758	-	-	-
45450	Printing and graphics	1,647	-	-	-
46900	Business meetings	866	-	-	-
47000	Miscellaneous	4,876	-	-	-
Maintenance & Operation Total		\$ 229,350	\$ -	\$ -	\$ -
TOTAL		\$ 1,398,670	\$ -	\$ -	\$ -

Note:

* Effective 7/1/2013, NS Code Enforcement was assigned new Fund/Org/Program 101-182-1007. Org 822 was inactivated.

**CITY OF GLENDALE
COMMUNITY DEVELOPMENT DEPARTMENT
GENERAL FUND - LICENSING*
101-823**

	Actual 2012-13	Adopted 2013-14	Revised 2013-14	Adopted 2014-15
Salaries & Benefits				
41100 Salaries	\$ 130,320	\$ -	\$ -	\$ -
41200 Overtime	460	-	-	-
Various Benefits	51,563	-	-	-
42700, 42702 PERS Retirement	20,496	-	-	-
42701 PERS cost sharing	(1,972)	-	-	-
Salaries & Benefits Total	\$ 200,867	\$ -	\$ -	\$ -
Maintenance & Operation				
44750 Liability Insurance	\$ 3,900	\$ -	\$ -	\$ -
Maintenance & Operation Total	\$ 3,900	\$ -	\$ -	\$ -
TOTAL	\$ 204,767	\$ -	\$ -	\$ -

Note:

* Effective 7/1/2013, NS Licensing was assigned new Fund/Org/Program 101-182-1007. Org 823 was inactivated.

**CITY OF GLENDALE
COMMUNITY DEVELOPMENT DEPARTMENT
GENERAL FUND - CLEAN & BEAUTIFUL GLENDALE*
101-825**

		Actual 2012-13	Adopted 2013-14	Revised 2013-14	Adopted 2014-15
Salaries & Benefits					
41300	Hourly wages	\$ 43,959	\$ -	\$ 1,983	\$ -
Various	Benefits	2,085	-	-	-
42700, 42702	PERS Retirement	6,913	-	-	-
42701	PERS cost sharing	(659)	-	-	-
Salaries & Benefits Total		\$ 52,298	\$ -	\$ 1,983	\$ -
Maintenance & Operation					
44100	Repairs to equipment	\$ 608	\$ -	\$ -	\$ -
44200	Advertising	450	450	450	450
44450	Postage	228	1,300	1,300	1,300
44750	Liability Insurance	1,310	-	-	-
44800	Membership & dues	445	2,250	2,250	2,000
45150	Furniture & equipment	-	4,000	4,000	4,000
45250	Office supplies	160	4,000	4,000	4,000
45300	Small tools	455	1,500	1,500	1,500
45350	General supplies	18,283	25,000	23,017	10,000
45450	Printing and graphics	615	-	-	-
46900	Business meetings	704	1,500	1,500	1,500
47000	Miscellaneous	2,754	984	984	984
Maintenance & Operation Total		\$ 26,012	\$ 40,984	\$ 39,001	\$ 25,734
TOTAL		\$ 78,310	\$ 40,984	\$ 40,984	\$ 25,734

Note:

* Effective 7/1/2014, Org 825 was renamed Clean & Beautiful Glendale (CBG).

**CITY OF GLENDALE
COMMUNITY DEVELOPMENT DEPARTMENT
GENERAL FUND - CLEAN & BEAUTIFUL GLENDALE - GRAFFITI REMOVAL *
101-825-1045**

		Actual 2012-13	Adopted 2013-14	Revised 2013-14	Adopted 2014-15
Salaries & Benefits					
41300	Hourly wages	\$ 43,959	\$ -	\$ 1,983	\$ -
Various	Benefits	2,085	-	-	-
42700, 42702	PERS Retirement	6,913	-	-	-
42701	PERS cost sharing	(659)	-	-	-
Salaries & Benefits Total		\$ 52,298	\$ -	\$ 1,983	\$ -
Maintenance & Operation					
44100	Repairs to equipment	\$ 608	\$ -	\$ -	\$ -
44200	Advertising	450	450	450	-
44450	Postage	229	1,300	1,300	-
44750	Liability Insurance	1,310	-	-	-
44800	Membership & dues	445	2,250	2,250	-
45150	Furniture & equipment	-	4,000	4,000	-
45250	Office supplies	160	4,000	4,000	-
45300	Small tools	455	1,500	1,500	-
45350	General supplies	18,283	25,000	23,017	-
45450	Printing and graphics	614	-	-	-
46900	Business meetings	704	1,500	1,500	-
47000	Miscellaneous	2,754	984	984	-
Maintenance & Operation Total		\$ 26,012	\$ 40,984	\$ 39,001	\$ -
TOTAL		\$ 78,310	\$ 40,984	\$ 40,984	\$ -

Note:

* Effective 7/1/2014, Graffiti Removal is combined with 101-182-1005. Program 1045 will be inactivated.

**CITY OF GLENDALE
COMMUNITY DEVELOPMENT DEPARTMENT
CDBG FUND - NEIGHBORHOOD SERVICES
201-820**

		Actual 2012-13	Adopted 2013-14	Revised 2013-14	Adopted 2014-15
Salaries & Benefits					
41100	Salaries	\$ 251,063	\$ 273,283	\$ 273,283	\$ 251,238
41200	Overtime	741	-	-	-
41300	Hourly wages	11,620	-	-	4,598
Various	Benefits	57,439	65,127	65,127	62,631
42700, 42702	PERS Retirement	41,460	44,225	44,225	44,663
42701	PERS cost sharing	(4,338)	(5,026)	(5,026)	(7,673)
Salaries & Benefits Total		\$ 357,985	\$ 377,609	\$ 377,609	\$ 355,457
Maintenance & Operation					
43080	Rent	\$ 7,644	\$ -	\$ -	\$ -
44100	Repairs to equipment	476	-	-	-
44351	Fleet / equip rental charge	-	7,539	7,539	7,826
44450	Postage	1,197	-	-	-
44650	Training	245	-	-	-
44750	Liability Insurance	7,819	9,893	9,893	9,670
44751	Insurance/surety bond premium	1,550	-	-	-
45250	Office supplies	3,154	959	959	3,047
45350	General supplies	931	-	-	-
45450	Printing and graphics	147	-	-	-
47000	Miscellaneous	241	-	-	-
Maintenance & Operation Total		\$ 23,404	\$ 18,391	\$ 18,391	\$ 20,543
TOTAL		\$ 381,389	\$ 396,000	\$ 396,000	\$ 376,000

**CITY OF GLENDALE
COMMUNITY DEVELOPMENT DEPARTMENT
HOUSING ASSISTANCE FUND - VOUCHER PROGRAM
202-850-10180**

		Actual 2012-13	Adopted 2013-14	Revised 2013-14	Adopted 2014-15
Salaries & Benefits					
41100	Salaries	\$ 1,467,953	\$ 1,465,295	\$ 1,465,295	\$ 1,486,104
41200	Overtime	148	-	-	-
41300	Hourly wages	118,869	116,873	116,873	124,466
Various	Benefits	335,418	327,950	327,950	353,012
42700, 42702	PERS Retirement	245,714	255,615	255,615	280,575
42701	PERS cost sharing	(30,525)	(31,733)	(31,733)	(48,202)
Salaries & Benefits Total		\$ 2,137,577	\$ 2,134,000	\$ 2,134,000	\$ 2,195,955
Maintenance & Operation					
43080	Rent	\$ 81,264	\$ 81,264	\$ 81,264	\$ 81,264
43110	Contractual services	126,251	133,000	133,000	141,120
43112	Direct assistance	13,880,059	14,175,168	14,175,168	14,136,960
43125	Portable voucher HAP expense	13,393,672	14,175,168	14,175,168	14,136,960
44100	Repairs to equipment	-	300	300	-
44120	Repairs to office equip	229	-	-	300
44200	Advertising	1,003	250	250	2,000
44350	Vehicle maintenance	1,441	1,500	1,500	1,500
44351	Fleet / equip rental charge	4,296	10,810	10,810	7,832
44450	Postage	22,620	26,000	26,000	28,000
44550	Travel	1,517	4,000	4,000	4,000
44650	Training	10,368	25,000	25,000	10,000
44700	Computer software	3,720	10,000	10,000	10,000
44750	Liability Insurance	47,425	57,276	57,276	60,877
44751	Insurance/surety bond premium	7,225	-	-	-
44760	Regulatory	2	6,300	6,300	3,000
44800	Membership & dues	3,228	4,000	4,000	3,500
45100	Books	448	250	250	500
45150	Furniture & equipment	1,226	10,000	10,000	25,000
45170	Computer hardware	573	10,000	10,000	10,000
45250	Office supplies	10,990	15,000	15,000	12,000
45350	General supplies	555	-	-	500
45450	Printing and graphics	9,510	6,000	6,000	12,000
46900	Business meetings	477	500	500	500
47000	Miscellaneous	935	10,000	10,000	10,000
Maintenance & Operation Total		\$ 27,609,034	\$ 28,761,786	\$ 28,761,786	\$ 28,697,813
TOTAL		\$ 29,746,611	\$ 30,895,786	\$ 30,895,786	\$ 30,893,768

**CITY OF GLENDALE
COMMUNITY DEVELOPMENT DEPARTMENT
HOME GRANT FUND - ADMINISTRATION
203-714**

		Actual 2012-13	Adopted 2013-14	Revised 2013-14	Adopted 2014-15
Salaries & Benefits					
41100	Salaries	\$ 141,286	\$ 205,192	\$ 205,192	\$ 192,584
41300	Hourly wages	5,274	9,100	9,100	5,050
Various	Benefits	39,259	55,401	55,401	50,861
42700, 42702	PERS Retirement	21,931	34,258	34,258	34,099
42701	PERS cost sharing	(4,125)	(6,351)	(6,351)	(5,858)
Salaries & Benefits Total		\$ 203,625	\$ 297,600	\$ 297,600	\$ 276,736
Maintenance & Operation					
43080	Rent	\$ -	\$ -	\$ -	\$ 8,808
43110	Contractual services	17,863	48,500	64,500	95,550
44120	Repairs to office equip	-	350	350	350
44200	Advertising	2,684	1,600	1,600	1,600
44450	Postage	21	850	850	850
44550	Travel	-	250	250	500
44650	Training	262	500	500	750
44700	Computer software	-	700	700	750
44750	Liability Insurance	4,394	7,756	7,756	7,471
44751	Insurance/surety bond premium	650	-	-	-
44760	Regulatory	50	-	-	50
44800	Membership & dues	450	500	500	500
45150	Furniture & equipment	326	500	500	1,000
45250	Office supplies	1,042	750	750	500
45450	Printing and graphics	695	1,000	1,000	250
46900	Business meetings	-	200	200	200
47000	Miscellaneous	-	-	-	5,000
Maintenance & Operation Total		\$ 28,437	\$ 63,456	\$ 79,456	\$ 124,129
TOTAL		\$ 232,062	\$ 361,056	\$ 377,056	\$ 400,865

CITY OF GLENDALE
COMMUNITY DEVELOPMENT DEPARTMENT
HOME GRANT FUND - HOUSING DEVELOPMENT & PRESERVATION - NEW CONSTRUCT RENTER-ACQ/REHAB
203-840-12230

		Actual 2012-13	Adopted 2013-14	Revised 2013-14	Adopted 2014-15
Salaries & Benefits					
41100	Salaries	\$ 640	\$ -	\$ -	\$ -
Various	Benefits	188	-	-	-
42700, 42702	PERS Retirement	101	-	-	-
42701	PERS cost sharing	(19)	-	-	-
Salaries & Benefits Total		<u>\$ 910</u>	<u>\$ -</u>	<u>\$ -</u>	<u>\$ -</u>
Maintenance & Operation					
43112	Direct assistance	\$ 401,231	\$ 900,707	\$ 900,707	\$ 909,367
44750	Liability Insurance	17	-	-	-
Maintenance & Operation Total		<u>\$ 401,248</u>	<u>\$ 900,707</u>	<u>\$ 900,707</u>	<u>\$ 909,367</u>
Transfers					
48020	Transfer-Special Revenue	\$ 1,054,000	\$ -	\$ -	\$ -
Transfers Total		<u>\$ 1,054,000</u>	<u>\$ -</u>	<u>\$ -</u>	<u>\$ -</u>
TOTAL		<u>\$ 1,456,158</u>	<u>\$ 900,707</u>	<u>\$ 900,707</u>	<u>\$ 909,367</u>

CITY OF GLENDALE
COMMUNITY DEVELOPMENT DEPARTMENT
BEGIN AFFORDABLE HOMEOWNERSHIP FUND - HOUSING DEVELOPMENT & PRESERVATION
212-840

	Actual 2012-13	Adopted 2013-14	Revised 2013-14	Adopted 2014-15
Maintenance & Operation				
43112 Direct assistance	\$ 3,393,773	\$ -	\$ -	\$ -
Maintenance & Operation Total	\$ 3,393,773	\$ -	\$ -	\$ -
TOTAL	\$ 3,393,773	\$ -	\$ -	\$ -

**CITY OF GLENDALE
COMMUNITY DEVELOPMENT DEPARTMENT
LOW&MOD INCOME HOUSING ASSET FUND - ADMINISTRATION
213-714**

		Actual 2012-13	Adopted 2013-14	Revised 2013-14	Adopted 2014-15
Salaries & Benefits					
41100	Salaries	\$ -	\$ 36,248	\$ 36,248	\$ 66,323
41300	Hourly wages	-	-	-	5,050
Various	Benefits	-	5,896	5,896	17,451
42700, 42702	PERS Retirement	-	5,867	5,867	12,123
42701	PERS cost sharing	-	(1,001)	(1,001)	(2,083)
Salaries & Benefits Total		\$ -	\$ 47,010	\$ 47,010	\$ 98,864
Maintenance & Operation					
43080	Rent	\$ -	\$ -	\$ -	\$ 9,540
43110	Contractual services	12,218	30,500	78,422	135,550
43150	Cost allocation charge	-	-	-	23,230
44120	Repairs to office equip	-	250	250	250
44200	Advertising	-	-	-	1,500
44352	ISD service charge	-	-	-	135
44450	Postage	-	1,500	1,500	1,500
44550	Travel	-	500	500	500
44650	Training	-	2,000	2,000	750
44700	Computer software	-	700	700	700
44750	Liability Insurance	-	-	-	2,699
44800	Membership & dues	-	600	600	500
45150	Furniture & equipment	-	500	500	500
45250	Office supplies	-	600	600	1,000
45450	Printing and graphics	-	1,000	1,000	1,000
46900	Business meetings	-	200	200	200
47000	Miscellaneous	-	5,000	5,000	5,000
Maintenance & Operation Total		\$ 12,218	\$ 43,350	\$ 91,272	\$ 184,554
TOTAL		\$ 12,218	\$ 90,360	\$ 138,282	\$ 283,418

**CITY OF GLENDALE
COMMUNITY DEVELOPMENT DEPARTMENT
LOW&MOD INCOME HOUSING ASSET FUND - HOUSING DEVELOPMENT & PRESERVATION
213-840**

		Actual 2012-13	Adopted 2013-14	Revised 2013-14	Adopted 2014-15
Salaries & Benefits					
41100	Salaries	\$ -	\$ -	\$ 60,000	\$ -
Salaries & Benefits Total		<u>\$ -</u>	<u>\$ -</u>	<u>\$ 60,000</u>	<u>\$ -</u>
Maintenance & Operation					
43112	Direct assistance	\$ -	\$ -	\$ 6,500,000	\$ 210,300
47000	Miscellaneous	-	-	5,544	36,000
47042	Interest RDLP loan	-	524,308	491,441	-
47110	Principal RDLP loan	-	-	4,643,323	-
Maintenance & Operation Total		<u>\$ -</u>	<u>\$ 524,308</u>	<u>\$ 11,640,308</u>	<u>\$ 246,300</u>
Transfers					
48060	Transfer-Misc Enterprise	\$ -	\$ -	\$ 1,100,000	\$ -
Transfers Total		<u>\$ -</u>	<u>\$ -</u>	<u>\$ 1,100,000</u>	<u>\$ -</u>
TOTAL		<u><u>\$ -</u></u>	<u><u>\$ 524,308</u></u>	<u><u>\$ 12,800,308</u></u>	<u><u>\$ 246,300</u></u>

CITY OF GLENDALE
COMMUNITY DEVELOPMENT DEPARTMENT
2011 TABS-HOUSING PROJECTS FUND - AFFORDABLE HOUSING ADMINISTRATION
214-714

	Actual 2012-13	Adopted 2013-14	Revised 2013-14	Adopted 2014-15
Extraordinary Loss				
49200 Extraordinary loss	\$ 7,504,095	\$ -	\$ -	\$ -
Extraordinary Loss Total	\$ 7,504,095	\$ -	\$ -	\$ -
TOTAL	\$ 7,504,095	\$ -	\$ -	\$ -

**CITY OF GLENDALE
COMMUNITY DEVELOPMENT DEPARTMENT**
PERSONNEL CLASSIFICATION DETAIL**

Classification	Actual 2012-13	Adopted 2013-14	Revised 2013-14	Adopted 2014-15
<u>Salaried Positions</u>				
Accountant I	0.10	0.10	0.10	0.10
Accountant II	0.50	0.50	0.50	0.50
Accounting Supervisor	0.45	0.45	0.45	0.45
Accounts Payable Technician III	-	-	0.15	0.15
Administrative Analyst	3.00	2.00	3.00	3.00
Administrative Assistant	1.00	1.00	1.00	1.00
Administrative Officer/CDD***	-	3.00	4.00	4.00
Assistant City Attorney	-	-	0.75	0.79
Assistant Code Compliance Inspector	-	-	3.10	-
Associate Code Compliance Inspector	-	-	2.00	-
Building Code Specialist II	3.00	3.00	3.00	3.00
Building Inspection Supervisor	2.00	2.00	2.00	2.00
Building Inspector	4.00	4.00	4.00	4.00
Building Official	1.00	1.00	1.00	1.00
Code Compliance Inspector	-	-	4.00	-
Community Development Supervisor	1.00	1.00	1.00	1.00
Customer Service Ops Supervisor/Steno	1.00	1.00	1.00	1.00
Customer Service Representative	11.00	11.00	11.00	11.00
Deputy Building Official	1.00	1.00	1.00	1.00
Deputy City Attorney	0.79	0.79	-	-
Deputy Director - Housing	1.00	1.00	1.00	1.00
Deputy Director Planning & Nbrhd Services	1.00	1.00	1.00	1.00
Director of Community Development	1.00	1.00	1.00	1.00
Director of Economic Development	-	0.80	0.80	0.80
Economic Development Coordinator	1.00	-	-	-
Electrical Inspector	1.00	1.00	1.00	1.00
Executive Officer-EconDev&AssetMgmt	1.00	-	-	-
Executive Secretary (Steno)	1.00	1.00	1.00	1.00
Finance Administrator	0.05	0.05	0.05	0.05
Housing Advisor	8.00	8.00	8.00	8.00
Housing Coordinator	1.00	1.00	1.00	1.00
Housing Technician	2.00	2.00	2.00	2.00
HVAC Inspector	1.00	1.00	1.00	1.00
IT Applications Analyst	-	-	1.00	-
License Investigator	2.00	2.00	-	2.00
Neighborhood Servcs Field Rep.	3.00	3.10	-	3.50
Neighborhood Services Inspector	4.00	4.00	-	4.00
Neighborhood Services Supervisor	-	-	1.00	1.00
Office Services Secretary	2.00	2.00	1.00	1.00
Office Services Specialist I	1.00	1.00	1.00	1.00
Permit Services Technician	2.00	2.00	2.00	2.00
Planner	6.00	6.00	5.00	6.00
Plumbing Inspector	2.00	2.00	2.00	2.00
Principal Admin Officer/CDD	1.00	1.00	1.00	1.00
Principal Development Officer	1.00	1.00	1.00	1.00
Principal Economic Development Officer	1.00	-	-	-
Principal Neighborhood Services Supervisor	1.00	1.00	1.00	1.00
Principal Planner	2.00	1.00	2.00	2.00

**CITY OF GLENDALE
COMMUNITY DEVELOPMENT DEPARTMENT**
PERSONNEL CLASSIFICATION DETAIL**

Classification	Actual 2012-13	Adopted 2013-14	Revised 2013-14	Adopted 2014-15				
Principal Urban Designer	1.00	1.00	1.00	1.00				
Program Coordinator	1.00	1.00	1.00	1.00				
Program Specialist	-	1.00	1.00	1.00				
Program Supervisor	1.00	1.00	-	-				
Sr. Accounting Tech (Conf.)	0.15	0.15	-	-				
Sr. Administrative Analyst	-	1.00	-	-				
Sr. Budget Analyst	0.20	0.20	0.20	0.20				
Sr. Building Code Specialist	3.00	3.00	3.00	3.00				
Sr. Building Inspector	1.00	1.00	1.00	1.00				
Sr. Community Development Supervisor	1.00	1.00	1.00	1.00				
Sr. Development Officer	1.00	1.00	1.00	1.00				
Sr. Economic Development Coordinator	1.00	-	-	-				
Sr. Housing Project Manager	1.00	1.00	1.00	1.00				
Sr. IT Applications Specialist	1.00	-	-	1.00				
Sr. Office Services Specialist	2.00	2.00	2.00	2.00				
Sr. Office Specialist	1.00	2.00	2.00	2.00				
Sr. Planner	5.00	6.00	5.00	5.00				
Sr. Urban Designer	1.00	1.00	1.00	1.00				
Systems Analyst	-	1.00	1.00	-				
Total Salaried Positions	<u>98.24</u>	<u>100.14</u>	<u>100.10</u>	<u>100.54</u>				
<u>Hourly Positions</u>		*	*	*	*			
Administrative Intern	0.92	(2)	-	-	-			
Agency/Housing Authority Members*****	7.00	7.00	7.00	7.00	7.00			
Building Inspector	-	-	-	3.00	(3)			
City Resource Specialist	0.77	(1)	1.48	(3)	1.23	(2)		
Customer Service Representative	1.71	(2)	1.34	(2)	1.34	(2)	2.71	(4)
Hourly City Worker	2.05	(4)	8.15	(11)	8.15	(11)	8.08	(12)
Office Specialist I	1.00	(1)	-	-	-	-	1.00	(1)
Program Coordinator	0.61	(1)	-	-	-	-	-	-
Program Specialist	1.57	(2)	-	-	-	-	-	-
Total Hourly Positions	<u>15.63</u>	<u>17.97</u>	<u>17.97</u>	<u>23.02</u>	<u>23.02</u>			
Community Development Department Total	<u>113.87</u>	<u>118.11</u>	<u>118.07</u>	<u>123.56</u>	<u>123.56</u>			

Notes:

* Indicates number of positions corresponding to the stated Full-Time Equivalence (FTE)

** Effective 7/1/13, Economic Development function moved from the Community Development Department to the Management Services Department.

*** Positions housed within the Successor Agency are included in the Personnel Classification Detail, however, the funding for these positions is part of the Recognized Obligation Payment Schedules (ROPs) and is not included in the City's budget.

**** The FY 2013-14 and FY 2014-15 full-time authorized salaried position count includes one (1) unclassified budgeted position.

***** Appointed Officials