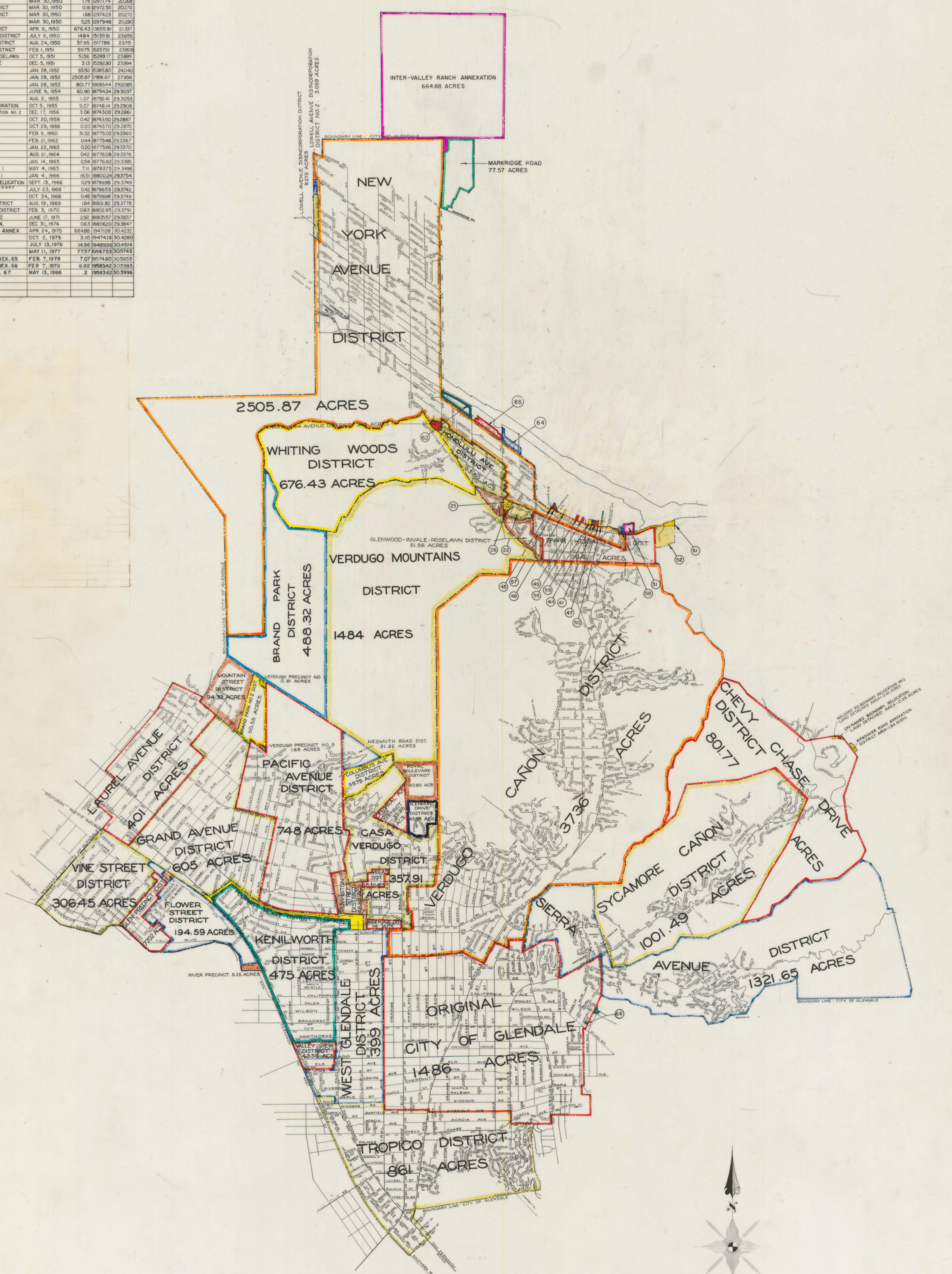
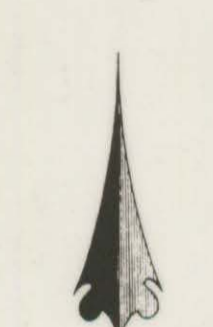
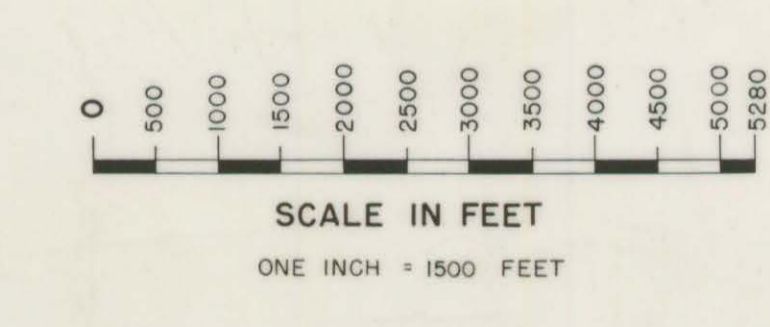


NUMBER	DISTRICT	DATE	ACRES	ACRES TO DATE
0	ORIGINAL CITY OF GLENDALE	INCORP FEB 6, 1906	1,486	1,486
1	WEST GLENDALE DISTRICT	OCT 28, 1911	399	1,885
2	VERDUGO CANYON DISTRICT	MAR 12, 1912	3,736	5,621
3	PUMPING PLANT DISTRICT	APR 21, 1916	21.50	5,642.50
4	REMINGTON STREET DISTRICT	APR 21, 1916	45.50	5,688
5	TROPICO DISTRICT	JAN 9, 1918	861	6,549
6	ARDEN AVENUE DISTRICT	MAY 22, 1918	14	6,563
7	VALLEY VIEW DISTRICT	MAY 22, 1918	43.50	6,606.50
8	KENILWORTH DISTRICT	AUG 7, 1918	4.75	6,611.25
9	GRAND AVENUE DISTRICT	MAR 11, 1919	6.05	6,617.30
10	PACIFIC DISTRICT	JULY 22, 1921	748	7,365.30
11	VIOLA STREET DISTRICT	AUG 2, 1921	18.50	7,383.80
12	SIERRA AVENUE DISTRICT	SEPT 19, 1921	1321.65	8,705.45
13	LAUREL AVENUE DISTRICT	DEC 19, 1921	401	9,106.45
14	FLOWER STREET DISTRICT	MAY 14, 1923	194.59	9,301.04
15	VINE STREET DISTRICT	MAR 3, 1924	306.45	9,607.49
16	MOUNTAIN STREET DISTRICT	SEPT 2, 1924	94.32	9,701.81
17	SPARR HEIGHTS DISTRICT	AUG 24, 1925	64	9,765.81
18	SYCAMORE CANYON DISTRICT	NOV 21, 1925	1001.9	10,767.71
19	CASA VERDUGO DISTRICT	APR 17, 1926	357.91	11,125.62
20	BRAND PARK DISTRICT	JULY 7, 1928	488.32	11,613.94
21	OLEN PRECINCT DISTRICT	MAY 28, 1945	77.02	11,690.96
22	DAK CIRCLE DRIVE DISTRICT	AUG 25, 1945	12.30	11,703.26
23	BRAND PARK NO 2 DISTRICT	DEC 31, 1945	30.55	11,733.81
24	GLENMONT DRIVE DISTRICT	JULY 12, 1948	42.88	11,776.69
25	OAKSIDE LANE DISTRICT	JULY 20, 1949	3.51	11,780.20
26	LA CRESCENTA AVE DISTRICT	AUG 25, 1949	0.95	11,781.15
27	SONORA DISTRICT	MAR 30, 1950	1.75	11,782.90
28	VERDUGO NO 1 DISTRICT	MAR 30, 1950	0.19	11,783.09
29	VERDUGO NO 3 DISTRICT	MAR 30, 1950	1.68	11,784.77
30	RIVER DISTRICT	MAR 30, 1950	5.25	11,790.02
31	WHITING WOODS DISTRICT	APR 6, 1950	676.43	12,466.45
32	VERDUGO MOUNTAINS DISTRICT	JULY 6, 1950	1484	13,950.45
33	CENTRAL AVENUE DISTRICT	AUG 24, 1950	37.95	14,018.40
34	COLUMBUS AVENUE DISTRICT	FEB 1, 1951	59.75	14,078.15
35	GLENWOOD-INAVAL-ROSELAWN DISTRICT	OCT 5, 1951	51.56	14,129.71
36	PENNSYLVANIA AVENUE DISTRICT	DEC 5, 1951	3.13	14,132.84
37	HONOLULU AVENUE DISTRICT	JAN 28, 1952	53.50	14,186.34
38	NEW YORK AVENUE DISTRICT	JAN 28, 1952	2505.87	16,692.21
39	CHEVY CHASE DRIVE DISTRICT	JAN 28, 1952	801.77	17,493.98
40	ROYAL BOULEVARD DISTRICT	JUNE 9, 1954	60.90	17,554.88
41	FLORENCIA DRIVE DISTRICT	AUG 2, 1955	1.07	17,555.95
42	LOWELL AVE DISINCORPORATION	OCT 5, 1955	9.27	17,565.22
43	LOWELL AVE DISINCORPORATION NO 2	DEC 17, 1956	3.06	17,568.28
44	FLORENCIA NO 2 DISTRICT	OCT 20, 1958	0.42	17,568.70
45	SUNSET AVENUE DISTRICT	OCT 29, 1959	0.20	17,568.90
46	NESMUTH ROAD DISTRICT	FEB 9, 1960	31.32	17,600.22
47	FLORENCIA NO 3 DISTRICT	FEB 21, 1962	0.44	17,600.66
48	FLORENCIA NO 4 DISTRICT	JAN 22, 1963	0.20	17,600.86
49	FLORENCIA NO 6 DISTRICT	AUG 21, 1964	0.42	17,601.28
50	FLORENCIA NO 5 DISTRICT	JAN 14, 1965	0.54	17,601.82
51	INDIAN SPRINGS NO 1 DISTRICT	MAY 4, 1965	7.11	17,608.93
52	VERDUGO BLVD NO 1 DISTRICT	JAN 4, 1966	15.51	17,624.44
53	UNNAMED BOUNDARY RELLOCATION	SEPT 15, 1966	0.29	17,624.73
54	WILSON BLVD DISTRICT	JULY 23, 1968	0.42	17,625.15
55	FLORENCIA NO 7 DISTRICT	OCT 24, 1968	0.45	17,625.60
56	WENDOVER ROAD DISTRICT	AUG 19, 1969	1.84	17,627.44
57	ORANGEVILLE NO 1A DISTRICT	FEB 3, 1970	0.83	17,628.27
58	VERDUGO BLVD NO 2 DISTRICT	JUNE 17, 1971	2.92	17,631.19
59	FLORENCIA DR ANNEX	DEC 31, 1974	0.63	17,631.82
60	INTER-VALLEY RANCH ANNEX	APR 25, 1975	664.88	18,296.70
61	VERDUGO BLVD DISTRICT	OCT 2, 1975	3.10	18,299.80
62	MONTROSE AVE DISTRICT	JULY 13, 1976	14.96	18,314.76
63	MARRIDGE ROAD DISTRICT	MAY 11, 1977	77.57	18,392.33
64	MONTROSE AVE ANNEX 65	FEB 7, 1978	7.07	18,400.40
65	MONTROSE AVE ANNEX 66	FEB 7, 1978	8.82	18,409.22
66	REORGANIZATION NO. 67	MAY 13, 1986	.2	18,409.42




 CITY OF GLENDALE
 CALIFORNIA

STREET MAP
 PREPARED BY THE
 ENGINEERING DEPARTMENT
 OF THE CITY OF GLENDALE



*Purchasers and users of this ANNEXATION MAP
 are aware that the Street and Highway System
 Base shown hereon is not current.*