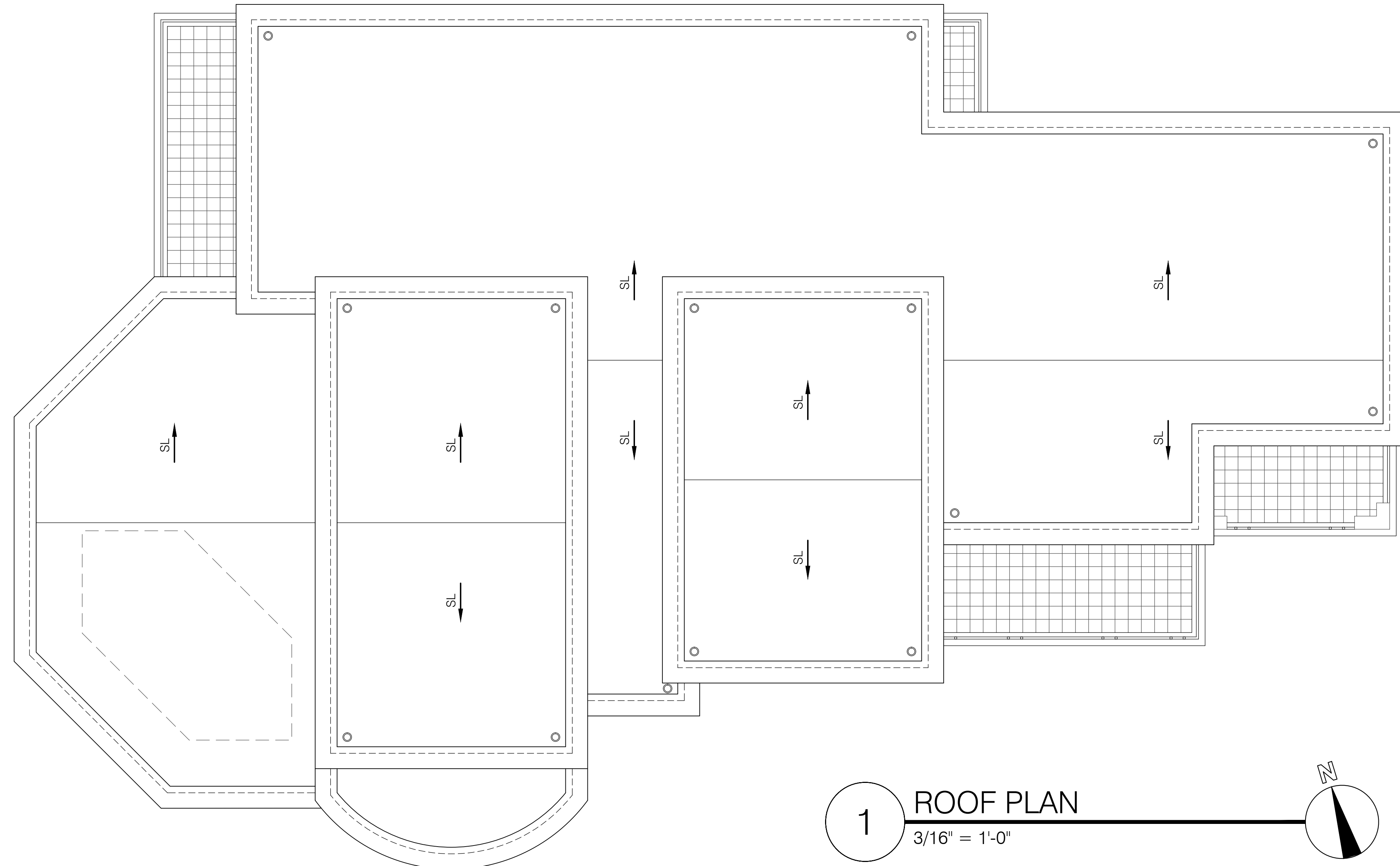


**DOOR SCHEDULE** ○

NO.	DOOR		DESCRIPTION
	OPENING SIZE (WxH)		
<b>FIRST FLOOR</b>			
01	6'-0"x8'-0"		ENTRY DOOR W/ 8'-0"x5'-6" ARCHED TRANSOM ABOVE
02	8'-0"x8'-0"		3-PANEL DOOR W/3x8" SWING. PNL. @ CNTR. & 2'-6" FIXED ON SIDES W/ SECURITY LOCK SET, TEMPERED
03	8'-0"x8'-0"		3-PANEL DOOR W/3x8" SWING. PNL. @ CNTR. & 2'-6" FIXED ON SIDES W/ SECURITY LOCK SET, TEMPERED
04	3'-0"x8'-0"		OUT-SWING DOOR W/ SECURITY LOCK SET, TEMPERED
05	3'-0"x8'-0"		OUT-SWING DOOR W/ SECURITY LOCK SET, TEMPERED
06	3'-0"x8'-0"		OUT-SWING DOOR W/ SECURITY LOCK SET, TEMPERED
07	3'-0"x8'-0"		OUT-SWING DOOR W/ SECURITY LOCK SET, TEMPERED
08	3'-0"x8'-0"		3-PANEL DOOR W/SWINGING PANEL AT THE CENTER & TWO 3x8" FIXED PANELS ON SIDES W/ SECURITY LOCK SET, TEMPERED
09	3'-0"x8'-0"		3-PANEL DOOR W/SWINGING PANEL AT THE CENTER & TWO 2x8" FIXED PANELS ON SIDES W/ SECURITY LOCK SET, TEMPERED
10	2'-8"x8'-0"		WOOD DOOR W/ PRIVACY LOCK SET
11	3'-0"x8'-0"		WOOD DOOR W/ PRIVACY LOCK SET
12	3'-0"x8'-0"		WOOD DOOR W/ PRIVACY LOCK SET
13	2'-8"x8'-0"		WOOD DOOR W/ PRIVACY LOCK SET
14	4'-0"x8'-0"		DBL. PANEL WOOD CLOSET DOOR
15	2'-8"x8'-0"		WOOD DOOR W/ PRIVACY LOCK SET
16	4'-0"x8'-0"		DBL. PANEL WOOD CLOSET DOOR
17	3'-0"x8'-0"		SELF -CLOSING, TIGHT FITTING S. C. WD.1-3/8"-THICK 20 MINUTE RATED DOOR AT GARAGE
18	5'-0"x7'-0"		DBL. PANEL WOOD CLOSET DOOR
19	16'-0"x8'-0"		GARAGE DOORS. WITH AUTOMATIC CLOSERS
20	5'-0"x8'-0"		DBL. PANEL WOOD CLOSET DOOR
<b>SECOND FLOOR</b>			
21	6'-0"x8'-0"		DBL. PANEL WOOD DOOR W/ PRIVACY LOCK SET
22	3'-0"x8'-0"		3-PANEL DOOR W/SWINGING PANEL AT THE CENTER & TWO 3x8" FIXED PANELS ON SIDES W/ SECURITY LOCK SET, TEMPERED
23	5'-0"x8'-0"		DBL. PANEL DOOR W/ SECURITY LOCK SET
24	2'-8"x8'-0"		WOOD DOOR W/ PRIVACY LOCK SET
25	2'-6"x7'-0"		GLASS SHOWER DOOR (TEMPERED)
26	2'-8"x8'-0"		OUT SWINGING BATHROOM DOOR
27	3'-0"x8'-0"		3-PANEL DOOR W/SWINGING PANEL AT THE CENTER & TWO 2x8" FIXED PANELS ON SIDES W/ SECURITY LOCK SET, TEMPERED
28	2'-8"x8'-0"		WOOD DOOR W/ PRIVACY LOCK SET
29	3'-0"x8'-0"		WOOD DOOR W/ PRIVACY LOCK SET
30	2'-8"x8'-0"		WOOD DOOR
31	3'-0"x8'-0"		WOOD DOOR W/ PRIVACY LOCK SET
32	2'-8"x8'-0"		WOOD DOOR W/ PRIVACY LOCK SET
33	5'-0"x8'-0"		DBL. PANEL DOOR W/ SECURITY LOCK SET
34	3'-0"x8'-0"		WOOD DOOR W/ PRIVACY LOCK SET
35	6'-0"x8'-0"		MIRRORED SLIDING CLOSET DOOR
36	6'-0"x8'-0"		MIRRORED SLIDING CLOSET DOOR
37	3'-0"x8'-0"		3-PANEL DOOR W/SWINGING PANEL AT THE CENTER & TWO 3x8" FIXED PANELS ON SIDES W/ SECURITY LOCK SET, TEMPERED
38	2'-8"x8'-0"		WOOD DOOR W/ PRIVACY LOCK SET

**WINDOW SCHEDULE** ◇

NO.	WINDOW		DESCRIPTION
	OPENING SIZE (WxH)		
<b>FIRST FLOOR</b>			
A	8'-0" X 8'-0"		FIXED WINDOW W/8x5'-6" ARCHED TRANSOM
B	3'-0" X 4'-6"		SWINGING WINDOW
C	2'-6" X 4'-0"		FIXED WINDOW, TEMPERED
D	2'-6" X 4'-0"		FIXED WINDOW, TEMPERED
E	5'-0" X 5'-0"		DOUBLE SWINGING WINDOW
F	2'-6" X 4'-0"		SWINGING WINDOW
G	9'-0" X 5'-0"		4x5' FIXED WIND. @ CNTR. & 2'-6"x5' SWINGING PANELS ON SIDES
H	2'-6" X 4'-0"		SWINGING WINDOW
<b>SECOND FLOOR</b>			
I	3'-0" X 5'-0"		SWINGING WINDOW
J	3'-0" X 5'-0"		SWINGING WINDOW
K	3'-0" X 5'-0"		SWINGING WINDOW
L	3'-0" X 5'-0"		SWINGING WINDOW
M	8'-0" X 4'-6"		4x4'-6" FIXED ARCHED WIND. @ CNTR. & 2'-0"x4'-6" SWING. ON SIDES
N	5'-0" X 5'-0"		DOUBLE SWINGING WINDOW
O	2'-6" X 4'-0"		SWINGING WINDOW
P	6'-0" X 5'-0"		DOUBLE SWINGING WINDOW
Q	2'-6" X 4'-0"		SWINGING WINDOW
R	2'-6" X 4'-0"		SWINGING WINDOW
S	2'-6" X 5'-0"		SWINGING WINDOW

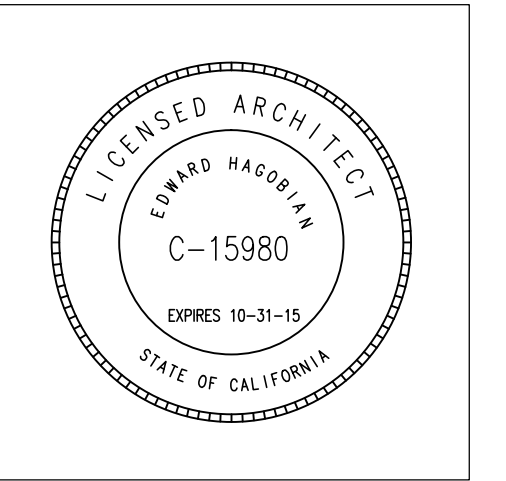


**1 ROOF PLAN**  
3/16" = 1'-0"

**EDWARD  
HAGOBIAN**  
&  
ASSOC.  
INCORPORATED  
ARCHITECTS

ARCHITECTURE / SPACE PLANNING / INTERIORS

**220 S. KENWOOD ST.  
STE. 210 GLENDALE  
CA. 91205  
TEL: (818) 502-0590  
FAX: (818) 502-0853**



**Project:**  
**SAGHDEJYAN RESIDENCE**

**330 WONDERVIEW DR.  
GLENDALE, CA 91202**

**Sheet title:**  
**ROOF PLAN**

**Revisions:**

△	

JOB NO.:	13-652
SCALE	3/16"=1'-0" WM
DRAWN BY:	
DATE:	JAN. 2014
SHEET NO.:	<b>A-5</b> □

ALL DRAWINGS AND WRITTEN MATERIAL APPEARING HEREIN CONSTITUTE THE ORIGINAL UNPUBLISHED WORK OF THE ARCHITECT AND THE SAME MAY NOT BE DUPLICATED, USED, OR DISCLOSED WITHOUT THE WRITTEN CONSENT OF THE ARCHITECT.