

LG

LEISURE GUIDE

City of Glendale, Community Services & Parks

FALL 2018

Programs, Activities and Parks!



**Parks
Make
Life
Better!**



www.glendaleca.gov/parks
www.twitter.com/MyGlendaleParks
@MyGlendaleParks #MyGlendale #MyGlendaleParks

WHAT'S INSIDE

- 3 Greetings from the Director
- 4-7 Special Events
- 8-9 Special Events - Historic Facilities
- 10-12 Special Events - CDBG Program
- 13 Special Events - Seniors
- 14-15 Party Packages
- 16 Day Camps - Thanksgiving Break
- 17-21 Day Camps - Winter Break
- 22 Aquatics - Program Information
- 23 Glendale Youth Alliance
- 24-25 Youth & Family
- 26-27 Drop-In Programs
- 28-29 Trails & Open Space Program
- 30-31 Verdugo Skate Park Programs
- 32 Skate at Pacific Park
- 33 Contract Class Information
- 34-36 Youth Classes
- 37-39 Youth Sports
- 40-42 Adult Classes
- 43-45 Adult Sports
- 46 Contract Class Registration Information
- 47 GCC Senior Classes
- 48-50 Senior Classes
- 51-53 Activities for Seniors
- 54-55 Senior Services
- 56 Filming in Parks & Community Buildings
- 57 Historic Buildings in Glendale Parks
- 58-59 Tours of Historic Facilities in Glendale Parks
- 60-71 Facility Reservations
- 72 Facility Information
- 73 Map of Glendale Parks
- 74 E-Newsletter Information
- 75 Phone Directory

City Council

Honorable Zareh Sinanyan, *Mayor*
Council Members:
Vrej Agajanian, Paula Devine, Ara Najarian, and
Vartan Gharpetian

Parks, Recreation & Community Services Commission

Grant Michals, *President*
Elen Asatryan, *Secretary*
Commissioners:
Ara Kalfayan, Susan Wolfson, and Alex Woo

CDBG Advisory Committee

Lila Ramirez, *Chair*
Zanku Armenian, *Vice Chair*
Committee Members:
Armik Avedisian, Ronnie Gharibian, and Noraier Ghazarian

Management Services

Yasmin Beers, *City Manager*
Roubik Golanian, *Assistant City Manager*
John Takhtalian, *Deputy City Manager*

Community Services & Parks

Onnig Bulanikian, *Director*
Tereza Aleksanian, *Deputy Director - Admin, R&CS, Human Services*
Koko Panossian, *Deputy Director - Park Services*
Judith Velasco, *Workforce Development Administrator*
Ivet Samvelyan, *Community Services Manager - Homeless Programs*
Maggie Kavarian, *Sr. Community Services Supervisor - CDBG*
Gabrielle Goglia, *Sr. Community Services Supervisor - R&CS*
Sevag Garabetian, *Sr. Community Services Supervisor - R&CS*

SATISFACTION GUARANTEE

Satisfaction is guaranteed on all programs. If you are not satisfied with the quality of our programs, for any reason, we encourage you to contact us immediately so that we can work to resolve your concerns and improve the quality of our programs for all participants.

Si tiene necesidad de interpretación, favor de llamar al (818) 548-2782.

Հայերեն տեղեկությունների համար զանգահարել հետևյալ հեռախոսահամարով (818)548-2000

Administration Office: (818) 548-2000

glendaleca.gov/parks



Follow us on Twitter: [@MyGlendaleParks](https://twitter.com/MyGlendaleParks) and facebook.com/MyGlendaleParks





Fall 2018

Summer is almost over, but the fun continues, and the Community Services & Parks Department is making sure of it! We've planned a variety of fall programs for all ages and interests.

People of all ages can enjoy dance, sports, visual arts, fitness and wellness classes for all skill levels.

Preschoolers and their parents can enjoy Tot Time together. Youth can drop-in at Maple Park's After-School Club, join us for Teen Night Out every other Friday at Pacific Community Center, and look forward to our Thanksgiving and Winter break camps. Fall 2018 will also see the beginning of the fourth year of the Community Services & Parks One Glendale Afterschool Youth Sports Program, a collaboration between the City and the Glendale Unified School District, providing after school sports for students in the 4th and 5th grades at eight south Glendale schools.

Families can enjoy the great outdoors by participating in our popular Trails & Open Space Program or visiting the historical buildings in our parks. Parents, if you need some time alone, we'll take care of the kids on select Friday nights at Pacific and Sparr Height Community Center as part of our Parent's Night Out program.

Seniors will be the life of the party at the Wild Wild West, Halloween, and Thanksgiving special celebrations at the Adult Recreation Center and Sparr Heights Community Center. They can also enjoy Karaoke on Tuesdays and Fridays, a mixer with dancing on Thursdays at the Adult Recreation Center, and much, much more.

A variety of human services are also available to seniors, youth and families, the homeless, and job seekers year round through the Community Services & Parks Department. Look inside to find out more!

Respectfully,

A handwritten signature in blue ink, appearing to read "Onnig Bulanikian".

Onnig Bulanikian, Director
Community Services & Parks Department



Pacific Community Center is hosting...

PARENT'S NIGHT OUT

Friday, September 7, 2018

Pacific Community Center, 501 S. Pacific Ave. Glendale, CA 91204

Kids are back in school....time for a break!

Drop off the kids for a night of fun activities, friends, food and movies. Participants are encouraged to bring pajamas, a blanket and a pillow.

Cost: \$15.00 per child

Ages: 5-12

Time: 6 p.m.—12 a.m.

SPACE IS LIMITED



Registration Starts

8/13/2018

Call: (818) 548-4098

Reasonable accommodations will be made upon request. Please notify us 72 hours prior to the event date.

Sparr Heights Community Center is hosting...

PARENT'S NIGHT OUT

Friday, October 5, 2018

Sparr Heights Community Center, 1613 Glencoe Way, Glendale CA 91208

Drop off the kids for a NIGHT OUT while kids enjoy...
PIZZA, FUN, FRIENDS, & MOVIES at Sparr Heights.

COST: \$15.00 per child

Ages: 5-12

Time: 6 p.m. - 12 a.m.

SPACE IS LIMITED

**To Reserve:
(818) 548-2187**

Parents receive \$10 in Montrose Shopping Park scrip to use anytime at most MSP shops and restaurants. They never expire!

**Parks
Make
Life
Better!**

Reasonable accommodations will be made upon request. Please notify us 72 hours prior to the event date.

Pacific Community Center is hosting...

PARENT'S NIGHT OUT

Friday, November 16, 2018

Pacific Community Center, 501 S. Pacific Ave. Glendale, CA 91204

Date Night Before the Holidays!

Drop off the kids for a night of fun activities, friends, food and movies at Pacific Community Center. Participants are encourage to bring pajamas, a blanket and pillow.

Cost: \$15.00 per child

Ages: 5-12

Time: 6 p.m. - 12 a.m.

SPACE IS LIMITED

Registration Starts
9/10/18

Call: (818) 548-4098



Reasonable accommodations will be made upon request. Please notify us 72 hours prior to the event date.

STREET FOOD CINEMA

GLENDALE 2018



cool movies.
tasty trucks.
good music.

May 12	Verdugo Park	WONDER WOMAN
June 23	Central Park	THE GOONIES
July 7	Central Park	MY GIRL
July 14	Brand Library	ROMEO + JULIET
Aug 11	Verdugo Park	SCOTT PILGRIM VS. THE WORLD
Sept 8	Central Park	NICK & NORAH'S INFINITE PLAYLIST
Sept 15	Brand Library	FERRIS BUELLER'S DAY OFF
Oct 13	Central Park	TWILIGHT 10th Anniversary

TICKETS & DETAILS WWW.STREETFOODCINEMA.COM

"Shoseian" Whispering Pine Teahouse & Friendship Garden

Inside Brand Park, 1601 West Mountain St., Glendale, CA 91201; (626) 390-0633

Join the Friends of the Shoseian Teahouse every third Sunday of the month for these family friendly events. Please visit www.shoseianteahouse.com for the most up-to-date information.

Please RSVP to: friends@shoseianteahouse.com

Omotosenke Tea Ceremony

Omotosenke has its own customs and traditions that we would like to highlight for you with the tea ceremony demonstration. Come and learn the very unusual and interesting story about this style of tea and the others that are associated with it.

Date: September 16, 2018
Time: 11:00 a.m.-12:30 p.m.
Donation: \$20 per person

Tama Do – Energetic Healing with Pat Aoki

Each of us has an internal flow of energy that has been called “Ki” in Japanese and “Chi” in Chinese. Our energy field can be influenced and enhanced by a combination of sound, color, aroma and movement therapy. Join us as we experience all of this, along with a bowl of Matcha tea.

Date: October 21, 2018
Time: 10:00 a.m. - 12:00 p.m.
Donation: \$20 per person

Chinese Tea Ceremony

The concept of tea culture started in China. Join us as we learn more about “Chayi” (the art of drinking tea) and “Cha Wenhua” (tea culture).

Date: November 18, 2018
Time: 10:00 a.m. - 12:00 p.m.
Donation: \$20 per person





Doctors House Museum & Gazebo

Inside Brand Park, 1601 West Mountain Street, Glendale, CA 91201; (818) 242-7447

Beneath the Veil

A special tour that explores the customs and rituals specific to the Victorian era around death. This year the focus will be on the 1918 flu epidemic.

Date: October 27, 2018
Time: 6:00 p.m. - 9:00 p.m.
Donation: \$10 for non-members

Candlelight Tours

An open house style tour where guests may explore the house as it is decorated for a Victorian Christmas. Refreshments and music will be enjoyed in the gazebo.

Date: December 8 & 15, 2018
Time: 6:30 p.m. - 8:30 p.m.
Donation: \$10 for non-members

Visit www.glendalehistorical.org for more the most up-to-date information.



The City of Glendale Invites you to a

CDBG OpenHouse

September 13, 2018
at 3:00 p.m.

PACIFIC PARK COMMUNITY CENTER
(Sycamore Room)
501 S. Pacific Ave , Glendale CA 91204

Please join us to hear about the upcoming CDBG grant cycle for 2019 and learn the fundamentals of receiving federal funds for your non-profit agency.

Each year the City of Glendale's Community Development Block Grant program provides social services and capital improvement grants to local non-profit organizations who serve low to moderate income individuals in our community.

For More Information: Call (818) 548-2000 or (818) 548-3715



The City of Glendale Invites Residents to Attend a...

COMMUNITY MEETING

How to Improve Your Neighborhood

Thursday, September 20, 2018

7:00pm

Pacific Community Center-(Sycamore Room)

501 S. Pacific Ave Glendale, CA 91204



Learn about City funded social services, housing programs, and public improvements that benefit your neighborhood. Give us your comments on community needs as a resident of the City of Glendale.

For more information, please contact: City of Glendale-Community Services & Parks– 818 548-2000

Visit the website at <http://www.glendaleca.gov/cdbg>



**Translation will be provided.
Facility is accessible to persons with disabilities.**



FAIR HOUSING WORKSHOP 10/18/18



HOUSING RIGHTS CENTER
IN PARTNERSHIP WITH THE CITY OF GLENDALE
**PRESENT A FREE WORKSHOP FOR LANDLORDS AND
PROPERTY MANAGERS**

JOIN US IF YOU HAVE QUESTIONS ABOUT:

- Fair Housing
- Evictions
- Security Deposits
- Rent Increases
- Mobile Homes
- Repairs....and more!



**TO RSVP
CALL: 800-477-5977
EXT. 1104
EMAIL:
YGUZMAN@HOUSING
RIGHTSCENTER.ORG**

**PACIFIC COMMUNITY
CENTER
Sycamore Room A 5202
501 S. Pacific Avenue
Glendale, CA 91204
THURSDAY,
OCTOBER 18, 2018
5:00PM-7:00PM**


HOUSING RIGHTS CENTER
WORKING FOR JUSTICE AND EQUALITY IN HOUSING
WWW.HOUSINGRIGHTSCENTER.ORG


(800) 477-5977
TTY (213) 201-0867

SPECIAL HOLIDAY CELEBRATIONS FOR SENIORS

Participants must call ahead and make reservations at least 1 week prior to the event.

- ◇ For reservations at the Adult Recreation Center, call (818) 548-3778.
- ◇ For reservations at Sparr Heights Community Center, call (818) 548-2187.

Wild West Party



Dust off your cowboy boots, put on your jeans, find that flannel shirt, and come join us for a western-themed lunch.

Fee: \$2.50 for lunch*
Date: Thursday, September 20, 2018
Time: 10:00 a.m. - 1:00 p.m.

Halloween Celebration



It's that time of the year again when the witches, ghosts and goblins can come out to play! Enjoy a spooktacular lunch and Halloween haunt at the Adult Recreation Center or Sparr Heights Community Center. Wear your costume and participate in the Costume Contest.

Fee: \$2.50 for lunch*
Date: Wednesday, October 31, 2018
Time: 10:00 a.m. – 1:00 p.m.

Thanksgiving Luncheon



Celebrate Thanksgiving with your Adult Recreation Center or Sparr Heights friends. A delicious holiday lunch with all the trimmings will be served.

Fee: \$2.50 for lunch*
Date: Thursday, November 15, 2018
Time: 10:00 a.m. – 1:00 p.m.

*\$2.50 donation for lunch for seniors 60 years of age or older and their spouses regardless of age.
Non-seniors pay \$4.75 per person.

Mobile Recreation

Party on the Go !

Each party package is designed for children ages 5 - 12 and will include arts and crafts, sports and games. The basic "Party on the Go!" package will include two staff for two hours and 6 games/activities for up to 12 children. Additional fees will apply for larger packages.

FEES for PARTY ON THE GO!:

Standard pricing: \$300 for the first 2 hours
\$100 for every hour thereafter
(Non profit rates available upon request and approval with proper tax status documentation)

Half of the total rental fees are due at the time of reservation to guarantee date.

Programs limited to the Glendale and La Crescenta area.



Standard Package includes six (6) from the following:



Games

- Potato Sack Races
- Capture the Flag
- Balloon Toss
- Bingo
- Hula Hoop Contest
- Frisbee distance Throw
- Obstacle Course

Arts and Crafts

- Paint art
- Clay art
- Foamy art
- Bead art
- Wooden art
- Glitter art
- Coloring

For program information or to request a rental application, please call (818) 937-7242.

Mobile Recreation

Flicks on the Go!



Mobile Movie Package

Watching a movie under the moonlight brings back the days of the drive-in era and will surely have nostalgic appeal to families throughout our community. The Community Services & Parks Department can bring that feeling to your special event!

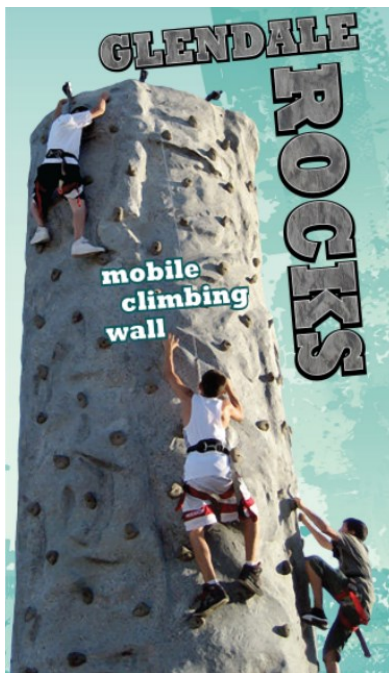
The **Flicks on the Go!** movie package includes:

- Large screen for viewing
- High power Video Projection
- Quality 5.1 Movie Surround Sound System
- 3 employees for delivery, installation, operation and breakdown
- A popcorn machine and craft tables are available *for an additional fee*

For program information, please call (818) 548-3783.

Glendale Rocks!

Climbing Wall



Glendale Rocks! portable climbing wall is 26 vertical feet of pure fun and excitement! The wall can be used for fundraisers, company events, grand openings, physical education classes or special events. The wall can handle 4 climbers at a time and up to 45 climbers per hour. The standard rental package will include two employees, the wall, and safety equipment for a two hour period.

Standard pricing: \$300 for the first 2 hours
\$100 for every hour thereafter

(Non profit rates available upon request
and approval with proper tax status documentation)

Half of the total rental fees are due at the time of
reservation to guarantee date.

Programs limited to the Glendale and
La Crescenta area.

For program information, please call (818) 937-7242.



Kool Dayz Thanksgiving Camp

Pacific Community Center
 501 S. Pacific Ave., Glendale, CA 91204
 For information, call (818) 548-4098



Not sure what to do with your child(ren) the week of Thanksgiving? Kool Dayz Camp is here for you! Kids will have fun making crafts, playing sports and games, competing in contests and making new friends. Campers must provide their own lunch, drink and snacks daily.

3-Day Camp

Dates: Monday - Wednesday, November 19 - 21, 2018
 (No camp Thursday, November 22 and Friday, November 23, 2018.)

Ages: 6 -12

	<u>Glendale Resident Fees*</u>	<u>Non-Resident Fees</u>	<u>Times</u>
Day Long	\$51/week/child	\$60/week/child	9:00 a.m. - 4:00 p.m.
Before Care	\$12/week/child	\$12/week/child	7:00 a.m. - 9:00 a.m.
After Care	\$12/week/child	\$12/week/child	4:00 p.m. - 6:00 p.m.



***Glendale residents may be eligible to receive a scholarship or a discount for this camp. Please visit www.glendaleca.gov/parks and click on Day Camps in the left navigation menu for scholarship and discount information as well as "Glendale Resident" information.**

Scholarship/Discount applications are due by August 10, 2018, @ 5:00 p.m.

Registration for Thanksgiving Camp begins on September 10, 2018

Phone: (818) 548-4098 or (818) 548-2184

Walk In: Pacific Community Center, 501 S. Pacific Ave., Glendale, CA 91204

Online: <https://parksonline.glendaleca.gov>

Kool Dayz Winter Camp

Pacific Community Center
 501 S. Pacific Ave., Glendale CA 91204
 For information, call (818) 548-4098



Kids will have fun making crafts, playing sports and games, competing in contests and making new friends. Campers must provide their own lunch, drink and snacks daily.

3-Day Camp

Dates: **Week 1:** Wednesday - Friday, December 26 - 28, 2018
 (No camp on Christmas Eve & Day, December 24 & 25, 2018)
Week 2: Wednesday - Friday, January 2 - 4, 2018
 (No camp on New Year's Eve & Day, December 31, 2018 and January 1, 2019)

Ages: 6 - 12

	<u>Glendale Resident Fees*</u>	<u>Non-Resident Fees</u>	<u>Times</u>
Day Long	\$51/week/child	\$60/week/child	9:00 a.m. - 4:00 p.m.
Before Care	\$12/week/child	\$12/week/child	7:00 a.m. - 9:00 a.m.
After Care	\$12/week/child	\$12/week/child	4:00 p.m. - 6:00 p.m.

** Glendale residents may be eligible to receive a scholarship or a discount for this camp. Please visit www.glendaleca.gov/parks and click on Day Camps in the left navigation menu for scholarship and discount information as well as "Glendale Resident" information.*

Scholarship/Discount applications are due by October 5, 2018, @ 5:00 p.m.



Registration for Winter Camp begins on November 5, 2018

Phone: (818) 548-4098 or (818) 548-2184

Walk In: Pacific Community Center, 501 S. Pacific Ave., Glendale, CA 91204

Online: <https://parksonline.glendaleca.gov>

Travelin' Teens Winter Camp

Pacific Community Center
501 S. Pacific Ave., Glendale CA 91204
For information, call (818) 548-4098

Teen campers will explore fun Glendale locations and surrounding communities by foot or using local bus lines. Teens will make new friends, go on a field trip, and chill with other teens.

3-Day Camp

Dates: **Week 1:** Wednesday - Friday, December 26 - 28, 2018
(No camp on Christmas Eve & Day, December 24 & 25, 2018)

Week 2: Wednesday - Friday, January 2 - 4, 2018
(No camp on New Year's Eve & Day, December 31, 2018 and January 1, 2019)

Ages: 12 - 14

	<u>Glendale</u> <u>Resident Fees*</u>	<u>Non-Resident Fees</u>	<u>Times</u>
Day Long	\$85/week/child	\$100/week/child	9:00 a.m. - 4:00 p.m.
Before Care	\$12/week/child	\$ 12/week/child	7:00 a.m. - 9:00 a.m.
After Care	\$12/week/child	\$ 12/week/child	4:00 p.m. - 6:00 p.m.

** Glendale residents may be eligible to receive a scholarship or a discount for this camp. Please visit www.glendaleca.gov/parks and click on Day Camps in the left navigation menu for scholarship and discount information as well as "Glendale Resident" information.*

**Scholarship/Discount applications are due by
 October 5, 2018, @ 5:00 p.m.**

Registration for Winter Camp begins on November 5, 2018

Phone: (818) 548-4098 or (818) 548-2184

Walk In: Pacific Community Center, 501 S. Pacific Ave., Glendale, CA 91204

Online: <https://parksonline.glendaleca.gov>

Kinder Winter Camp

Pacific Community Center

501 S. Pacific Ave., Glendale CA 91204

For information, call (818) 548-4098

Kinder Camp is a great way to introduce your preschooler or kindergartener to day camp. Your camper will interact with other campers, make new friends, and develop social skills. Campers will have indoor and outdoor games, sports, arts and crafts, and story time.

3-Day Camp

Dates: **Week 1:** Wednesday - Friday, December 26 - 28, 2018
(No camp on Christmas Eve & Day, December 24 & 25, 2018)

Week 2: Wednesday - Friday, January 2 - 4, 2018
(No camp on New Year's Eve & Day, December 31, 2018 and January 1, 2019)

Ages: 4 - 5

	<u>Glendale Resident Fee*</u>	<u>Non-Resident Fee</u>	<u>Time</u>
1/2 Day Morning Before Care	\$65/week/child \$12/week/child	\$80/week/child \$12/week/child	9:00 a.m. - 1:00 p.m. 7:00 a.m. - 9:00 a.m.

** Glendale residents may be eligible to receive a scholarship or a discount for this camp. Please visit www.glendaleca.gov/parks and click on Day Camps in the left navigation menu for scholarship and discount information as well as "Glendale Resident" information.*

Scholarship/Discount applications are due by October 5, 2018, @ 5:00 p.m.

Registration for Winter Camp begins on November 5, 2018

Phone: (818) 548-4098 or (818) 548-2184

Walk In: Pacific Community Center, 501 S. Pacific Ave., Glendale, CA 91204

Online: <https://parksonline.glendaleca.gov>

Sparr-Tacular Winter Camp

Sparr Heights Community Center
1613 Glencoe Way, Glendale, CA 91208
For information, call (818) 548-2187

It's time for Winter fun at Sparr Heights Community Center! Children ages 5-12 will enjoy games, crafts, and a special treat on Fridays. Children must bring a sack lunch each day of camp. Registration is on a weekly basis.

3-Day Camp

Dates:

Week 1: Snow Much Fun	Wednesday, Thursday, Friday December 26, 27 & 28, 2018
Week 2: Pajama Party Week	Wednesday, Thursday, Friday January 2, 3 & 4, 2018

Ages: 5 - 12

Fees:	<u>Glendale Resident*</u> \$39/week/child	<u>Non-Resident</u> \$48/week/child	<u>Times</u> 12:00 p.m. – 6:00 p.m.
--------------	---	---	---

- ◆ *Glendale residents may be eligible to receive a discount for this camp. Please visit www.glendaleca.gov/parks and click on Day Camps in the left navigation menu for scholarship and discount information as well as "Glendale Resident" information.*

*Discount applications are due by
October 5, 2018, @ 5:00 p.m.*



Registration for Winter Camp begins on November 5, 2018

Phone: (818) 548-2187 or (818) 548-2184

Walk In: Sparr Heights Community Center, 1613 Glencoe Way, Glendale, CA 91208

Online: <https://parksonline.glendaleca.gov>

Maximum Potential Basketball Winter Break Camp



Pacific Community Center
501 S. Pacific Ave., Glendale CA 91204
For information, call (818) 548-4098

Hoopapalooza is designed to help improve an individual's strength, knowledge, and overall development of basketball. Join this camp TODAY and you will be able to fulfill your aspirations. Learn the basics and advanced movements of the game. We will also cover dribbling, passing, shooting, and agility. ALL SKILL LEVELS ARE WELCOME!!!!

Mark Herring of Hoopapalooza Inc will be the instructor. Coach Herring is a native of North Carolina and has worked with the likes of Coach K (Duke Univ and Mens National Basketball Team), Carmelo Anthony, Kobe Bryant and other NBA Stars. COME JOIN THE FUN!!!!

3-Day Camp

Dates: Wednesday - Friday, December 26 - 28, 2018

Ages: 5 - 9

	<u>Number</u>	<u>Fee</u>	<u>Time</u>
Half Day	360804-01	\$75/week/child	9:00 a.m. - 1:00 p.m.
Before Care	362402-01	\$20/week/child	7:00 a.m. - 9:00 a.m.

3-Day Camp

Dates: Wednesday - Friday, January 2 - 4, 2019

Ages: 9-16

	<u>Number</u>	<u>Fee</u>	<u>Time</u>
Half Day	360804-01	\$105/week/child	9:00 a.m. - 1:00 p.m.
Before Care	362402-01	\$ 20/week/child	7:00 a.m. - 9:00 a.m.
After Care	362403-01	\$ 20/week/child	4:00 p.m. - 6:00 p.m.



AQUATICS

FOR INFORMATION, CALL (818) 937-7433 or visit the website at www.glendaleaquatics.com

PACIFIC COMMUNITY POOL



The Pacific Community Pool is open for recreation swim on weekends through September 30.

- For the weekly pool schedule, please visit www.glendaleaquatics.com.

SPLASH PADS

Splash pad water features will be open through October! These are free water features for children, and are available to any park visitors.

Dates/Hours: June 9 - September 14, 2018
11:00 a.m. - 6:00 p.m.
Monday - Sunday (Daily)

September 15 - October 14, 2018
11:00 a.m. - 6:00 p.m.
Saturdays & Sundays only

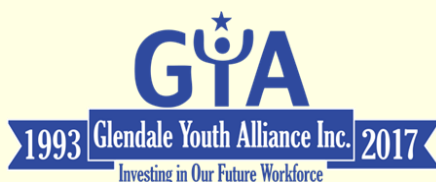
Locations:

Cerritos Park
3960 San Fernando Rd.
Glendale, CA 91204



Pacific Community Center & Park
501 S. Pacific Ave.
Glendale, CA 91204





Make a difference in our community by investing in our local youth and hiring through GYA!

Business Owners

Private Property Owners

Save Money for Your Business

FIVE GREAT REASONS
To Hire Through The Glendale Youth Alliance

1. GYA pays the initial 200 hours of Youth's wages
2. GYA covers workers' compensation insurance
3. GYA provides pre-screened work-ready youth
4. Interview and select from youth ages 18-24
5. Develops the future workforce

Applying is Quick and Easy!

Complete the Glendale Youth Alliance Position Request form on the back of this flyer and mail to: Laura Isaacs at The Verdugo Jobs Center at 1255 S. Central Ave. Glendale CA 91204

For more information contact Laura Isaacs at (818) 937-8057 • LIsaacs@GlendaleCA.gov
A Partnership Between Government, Education, Business & Community • Providing Employment Opportunities For Youth • A California Nonprofit Corporation • Tax ID# 95-4453585
www.Glendaleyouthalliance.org

DON'T BE A VICTIM OF THE NEXT UNEXPECTED DISASTER!

Due to the recent Station Fires, now more than ever there is a need for taking precautions before the arrival of the rainy season. Take action today!!! Hire participants from The Glendale Youth Employment Partnership to clear dirt, debris and vegetation from drainage ditches, channels and swells on your property. The youth can also place sand bags according to your direction.

GYA
GLENDALE YOUTH ALLIANCE INC.
Making a difference

For more information, or to get a free estimate, Please Call (818) 548-3727

HIRE our YOUTH! & invest in our FUTURE!

Hire our supervised Teams to perform hillside brush clearance on your property for a reasonable fee. Teams can also be hired for other general labor tasks. All work teams are fully insured, supervised and have their own tools and transportation. Reasonable Prices! Quality of work guaranteed!

Services Available:

- Hillside Clearance
- Yard maintenance
- Landscaping
- Brush abatement & Clearance
- Property Clean up and general labor tasks
- Mudslide prevention work

Need additional help with your operations?

Hire through the GREAT program and we can place an employee within a few days. It's easy and hassle free. GYA will provide pre-screened youth, cover the workers' compensation insurance and payroll. Your business will be billed bi-monthly for the youth wages. Call us today at (818) 937-8056.

For more information about GYA programs, please call (818) 937-8073 or visit us at www.glendaleyouthalliance.org

Like us on Facebook and stay connected!

For a free estimate, call (818) 548-3727.



YOUTH & FAMILY SERVICES PROGRAM

Pacific Community Center, 501 S. Pacific Ave., Glendale, CA 91204

Hours: Monday - Friday, 9:00 a.m. - 6:00 p.m. For more information, call (818) 937-7243

The Youth & Family Services Program is designed to provide free information and referral services to at-risk youth and their families. The program supports the family unit by providing guidance in decision-making and by linking individuals with supportive services in the community.

Eligibility:

Youth 13 - 17 years of age and young adults 18 - 21.

No income or residency requirements.

Self-referrals and referrals from local agencies are accepted.

Services provided:

Information & Referral - assist with linking individuals to community providers regarding a variety of social issues which include, but are not limited to: Employment, Community Service, Health & Wellness, Housing/Unstable living situations, and legal matters.

Juvenile Ultimatum Service Training (J.U.S.T) - A service component that provides youth the opportunity to complete mandated community service hours through a balance and restorative justice, community service learning, community protection and competency development process.

GLENDALE TEEN NIGHT OUT

CITY OF GLENDALE
COMMUNITY SERVICES & PARKS
Youth & Family Services Section

Parks Make Life Better!

TEEN NIGHT OUT
Every Other Friday Night
5:00 p.m. - 9:00 p.m.
Ages 13 - 17

FREE Snacks & Refreshments

Upcoming Dates
September 14 & 28
October 12 & 26
November 2, 16 & 30
December 7 & 21

KARAOKE
PING PONG
POOL
VIDEO GAMES

Pacific Community Center
501 S. Pacific Ave.
Glendale, CA 91204
(818) 548-4098

@MyGlendaleTeens
#MyGlendaleTeens

Glendale Teen Night Out is designed to provide **FREE** activities that include billiards, ping pong, karaoke, PS4, and coordinated activities to **teens ages 13-17**. Snacks and beverages provided (First come first serve).

Community Center Youth Activity Card required to participate.

For more information, please call (818) 937-7243.

Location #1: Pacific Community Center
501 S. Pacific Ave.
Glendale, CA 91204

Day: Every Other Friday

Time: 5:00 p.m. - 9:00 p.m.



@MyGlendaleTeens Now on Instagram!

Follow us on Instagram to find out the latest info on volunteer and job opportunities, special events, educational workshops, and places to hang out for teens!

For more information, call:
(818) 937-7243.

Become a Teen Volunteers

Want to volunteer?

1. Are you at least 14 years old?
2. Can you commit to 50 hours per year?
3. Do you have one of the following forms of identification?
 - ◆ California Driver License
 - ◆ California Identification Card
 - ◆ U.S. Passport
 - ◆ Military Identification Card
 - ◆ Green Card
4. Can you volunteer on weekends?



If you answered yes to all of the above, please call Jackie at (818) 937-7243, or e-mail her at jbaliton@glendaleca.gov to schedule an appointment.

THERAPEUTIC RECREATION FOR ADULTS

Get Fit

Get Fit is a free program designed to improve the health status of adults with intellectual disabilities by focusing on nutrition, healthy meal planning, monthly weigh-ins and measurements, stretching and conditioning. Activities are age and skill appropriate.

Location: Maple Park Community Center, 820 E. Maple St., Glendale, CA 91205

Day: Mondays

Time: 5:00 p.m. – 7:00 p.m.

Club Maple



Club Maple is a free program open to adults with intellectual disabilities which provides an opportunity for individuals to experience positive, healthy, recreational, cultural, educational, and social experiences. Activities are age and skill appropriate.

Location: Maple Park Community Center,
820 E. Maple St., Glendale, CA 91205

Day: Thursdays

Time: 5:30 p.m. - 8:00 p.m.

For program information, please call (818) 548-3783.

**We are recruiting volunteer fitness, wellness, and nutrition instructors.
For information, please call (818) 548-3783.**

SPECIAL NEEDS ACCOMODATIONS

The Community Services & Parks Department will provide any reasonable accommodation toward the inclusion of a participant. Please contact the Therapeutic Recreation Supervisor at (818) 548-3783 two weeks prior to the start of the program. Ample time is required to determine the needs for each request.

YOUTH PROGRAMS



Maple Park and Sparr Heights After School Clubs

The After School Clubs at Maple Park and Sparr Heights Community Centers are free and fun drop-in after school programs for children ages 8 to 17. Recreation Leaders provide general supervision and programming. Maple Park Community Center offers a recreation room with foosball, ping pong, air hockey, and other gaming activities. There is a computer lab with internet and video games. There is also a full-court gymnasium which offers drop-in basketball for youth. Sparr Heights Community Center offers lots of activities within the center including Table Tennis, Wii, Karaoke, Billiards, and other gaming activities. The entire center has FREE WiFi. Our Garden Room and South Patio are excellent locations to do homework.

Location: Maple Park Community Center, 820 E. Maple St., Glendale, CA 91205

Days: Monday through Friday

Time: 2:30 p.m. - 5:00 p.m.

For more information, please call (818) 548-3694.

Location: Sparr Heights Community Center, 1613 Glencoe Way, Glendale, CA 91208

Days: Tuesdays, Wednesdays, Thursdays

Time: 3:00 p.m. - 6:00 p.m.

For more information, please call (818) 548-2187.

A responsible adult/guardian must accompany all children under eight (8) years of age. This program is designed to provide supplemental activities for your child after school, and not to provide childcare.

Tot Time



Tot time is a FREE drop-in program for preschoolers (ages 5 and under) and their parents. The center provides play equipment and toys while parents provide the supervision. No registration required.

Location: Maple Park Community Center, 820 E. Maple St., Glendale, CA 91205

Days: Mondays and Wednesdays

Time: 10:00 a.m. - 12:00 p.m.

For program information, please call (818) 548-3694.

Location: Pacific Community Center, 501 S. Pacific Ave., Glendale, CA 91204

Days: Tuesdays and Thursdays

Time: 10:00 a.m. - 12:00 p.m.

For program information, please call (818) 548-4098.

Pacific Park Library offers stories and crafts on Thursdays from 10:30 a.m. - 11:00 a.m.

TRAILS & OPEN SPACE PROGRAMS

For information, please call (818) 548-3795.

RIVERWALK WORKDAYS

Glendale Narrows Riverwalk

300 Paula Ave., Glendale, CA 91201

Corner of Paula Avenue and Garden Street

Saturdays: August 18, 2018 | September 8, 2018 | October 13, 2018

8:00 a.m. - 12:00 p.m.



Join us down by the riverside as we work to remove invasive plants from the landscaped areas along the L.A. River. Participants are asked to wear sturdy shoes, protective clothing, and bring sunscreen, sun glasses and a hat. We'll provide tools, gloves, drinks and snacks. If you have your own gloves and hand clippers, please bring them along. Families, individuals, clubs, and students needing community service hours are welcome. Groups of 10 or more, please RSVP by calling (818) 548-3795.

WILDERNESS WORKDAYS

Deukmejian Wilderness Park

3429 Markridge Rd., Glendale, CA 91214

Saturdays: August 25, 2018 | September 22, 2018 | October 20, 2018

8:00 a.m. - 12:00 p.m.



Help us water our Big Cone Spruce and Coast Live Oaks, assist with trail repairs, and remove invasive species from the park. This program is perfect for students who need community service hours. Community and youth organizations are welcome. Please wear sturdy shoes, and bring a hat, sunscreen, and protective clothing. Drinks and snacks will be provided. Groups of 10 or more, please RSVP by calling (818) 548-3795.

INTERPRETIVE HIKES AND PROGRAMS

For information or to RSVP, please call (818) 548-3795

PERSEID METEOR SHOWER

Deukmejian Wilderness Park

3429 Markridge Rd., Glendale, CA 91214

Saturday, August 11, 2018

8:00 p.m. - 10:00 p.m.

This evening is projected to be the best night for seeing the Perseid Meteor Shower. We will keep the park open late (until 10:00 p.m.) Bring a blanket or folding chair to view the night sky. We'll serve our world-famous astronomy themed drinks and snacks. You must call us at (818) 548-3795 to reserve your spot.

ABC CAMPFIRE PROGRAM

**Deukmejian Wilderness Park
3429 Markridge Rd., Glendale, CA 91214
Saturday, September 1, 2018
6:30 p.m. - 8:30 p.m.**

This program will focus on things in the Park that start with the letters A, B, or C. In mid-August we will ask our friends on the Trails and Open Space email list to submit their ideas for a topic to be covered. Examples are: Ants, Bats, Clouds. We will have songs and skits to fit the theme of the campfire – and smiles and s'mores.

MEDICINAL PLANT HIKE

**Deukmejian Wilderness Park
3429 Markridge Rd., Glendale, CA 91214
Saturday, September 15, 2018
9:00 a.m. – 12:00 p.m.**

Our host for the morning hike will be Dr. James Adams from the USC School of Pharmacy and Co-author of "Healing with Medicinal Plants of the West - Cultural and Scientific Basis for Their Use". The hike starts at 9:00 A.M. We will be on a moderately steep trail with uneven footing. There will be several stops to discuss the plants and their medicinal uses. This event is FREE!!! But space is limited. You must call us at (818) 548-3795 to reserve your place.

Please remember to RSVP at (818) 548-3795

All Trails and Open Space programs are sponsored by the
[Glendale Parks & Open Space Foundation](#)

JOIN OUR E-MAIL LIST!

Are you on the Trails & Open Space e-mail list? We send out flyers and calendars for all our events, programs, and meetings. Just email us at TrailOpenspace@GlendaleCA.gov and tell us you want to be added to the Trails and Open Space list!

(P.S. We never make your e-mail address available to any other company or organization.)



Verdugo Park
1621 Cañada Blvd.
(south end)
(818) 548-2786

FRIDAY NIGHT LIGHTS

Enjoy some of the newest skateboard videos on a big projection screen. There will be a raffle and one grand prize given away monthly. Free snack with the purchase of a raffle ticket. Free admission. *Dates and times are subject to change.*

Dates: September 21, October 19, November 16, & December 14, 2018

Time: 5:30 p.m. - 8:30 p.m.

BEGINNING SKATE CLASSES

Skaters will be introduced to the following fundamentals: Safety procedures which involve the proper use of safety equipment; falling techniques; and basic skills like balance, stance, pushing, and turning. *There is a minimum of three participants and a maximum of eight participants per class.* **All skaters must provide their own helmet, skateboard, and elbow and knee pads.**

6 WEEKS **Fee:** \$100

Dates: Sundays, September 9 - October 14, 2018

Times: 9:00 a.m. - 10:00 a.m.

INTERMEDIATE SKATE CLASSES

Skaters will continue to master the following fundamentals: Safety procedures, which involve the proper use of safety equipment; falling techniques; basic skills like balance, stance, pushing, and turning. They will also work on ollieing and begin to learn tricks. *There is a minimum of three participants and a maximum of eight participants per class.* **All skaters must provide their own helmet, skateboard, and elbow and knee pads.**

6 WEEKS **Fee:** \$100

Dates: Saturdays, September 8 - October 13, 2018

Times: 9:00 a.m. - 10:00 a.m.

DROP-BY SKATE CLASSES

We offer scheduled drop-by beginning skate classes. Beginners will learn the proper stance and balance. Registration for drop by skate classes will be accepted **ONLY** at the Verdugo Skate Park on the day class is offered on a first come, first serve basis.

There is a maximum of 5 participants per class.

All skaters must provide their own helmet, skateboard, and elbow and knee pads.

Days: Mondays, Wednesdays & Fridays

Time: 4:00 p.m. - 5:00 p.m.

Fee: \$20 per class



SKATE PARK

Verdugo Park, 1621 Cañada Blvd. (south end)
Glendale, CA 91208
(818) 548-2786



HOURS OF OPERATION:

Year Round Hours: Beginning August 20, 2018

Monday – Friday: 4:00 p.m. - 10:00 p.m. (for all ages)
Saturday: 10:00 a.m. - 12:00 p.m. (14 & under*)
12:00 p.m. - 10:00 p.m. (for all ages)
Sunday: 10:00 a.m. - 10:00 p.m. (for all ages)

**From 10:00 a.m.-12:00 p.m. on Saturdays, parents may skate with their children for instructional purposes. This is at the safety discretion of skate staff.*

FEES:

	Youth (17 & Under)	Adult (18 & Over)
Daily Entry	\$3	\$4
Monthly Pass	\$25	\$40
Annual Pass	\$50	\$75

FEATURES:

15,000 square foot concrete facility: 6 - 9 foot Clover Bowl with 11 foot Over-Vert section, 6 - 10 foot Kidney Pool, Street Plaza with rails and ledges, and a Snake Run that empties into a 9 foot bowl with a Loveseat.



ALL PERSONS ENTERING THE PARK MUST WEAR A HELMET, KNEE PADS AND ELBOW PADS.

All skaters must have a valid release of liability form on file.
(Youth ages 17 and under are required to have parent/guardian signature.)

BMX bikes, scooters or other coasting devices are NOT permitted.

Follow us on Twitter
@verdugosk8park



CITY OF GLENDALE
COMMUNITY SERVICES & PARKS
Youth & Family Services Section

Skate at Pacific Park

Ages 13-17

Mondays 4:00 p.m. - 6:00 p.m.



Bring your friends on Mondays between 4:00 p.m. and 6:00 pm. to Pacific Park and Community Center and take advantage of the mobile skate park, **FREE!**

In-line skaters and skateboarders must wear a helmet, kneepads and elbow pads.
Participants are required to have a completed Release of Liability & Indemnity Agreement form on file and a valid community center activity card.
All forms require a parent/guardian signature.



Pacific Park and Community Center

501 S. Pacific Ave
Glendale, CA 91204

For questions or more information, call (818) 937-7240



@MyGlendaleTeens #MyGlendaleTeens



REASONABLE ACCOMMODATIONS WILL BE MADE UPON REQUEST.
PLEASE NOTIFY US WITHIN 72 HOURS PRIOR TO EVENT DATE.

CONTRACT CLASS INFORMATION

FALL 2018 SESSION DATES

August 20, 2018	Enrollment begins.
September 10, 2018	Open classes begin.
September 22, 2018	Last day to enroll for open classes. Classes that do not meet the minimum number of students may be cancelled.

See Pages 46 for Registration Information, or call (818) 548-2184.

CLASS LOCATIONS

<p>Adult Recreation Center (ARC) Central Park Complex 201 E. Colorado St. Glendale, 91205</p>	<p>Brand Teahouse 1601 W. Mountain St. Glendale, 91201</p>	<p>Brand Studios 1601 W. Mountain St. Glendale, 91201</p>
<p>Chevy Chase Library 3301 E. Chevy Chase Dr. Glendale, 91206</p>	<p>Dunsmore Community Building & Park 4700 Dunsmore Ave. La Crescenta, 91214</p>	<p>Griffith Manor Community Building 1551 Flower St. Glendale, 91201</p>
<p>Joe Bridges Clubhouse (In Glenoaks Park) 2531 E. Glenoaks Blvd. Glendale, 91206</p>	<p>Maple Park Community Center 820 E. Maple Glendale, 91205</p>	<p>Pacific Community Center & Pool 501 - 509 S. Pacific Ave. Glendale, 91204</p>
<p>Sparr Heights Community Center 1613 Glencoe Way Glendale, 91208</p>	<p>Glendale Sports Complex 2200 Fern Lane Glendale, 91208</p>	<p>Verdugo Skate Park 1621 Cañada Blvd. (south end) Glendale, 91208</p>
<p>Glorietta Park 2801 N. Verdugo Rd. Glendale, CA 91208</p>	<p>Montrose Park 3529 Clifton Pl. Glendale, CA 91208</p>	<p>Scholl Canyon Golf & Tennis 3800 E. Glenoaks Blvd. Glendale, CA 91206</p>
<p>Crescenta Valley High School 2900 Community Ave La Crescenta, CA 91214</p>	<p>Glendale Community College 1500 N. Verdugo Rd. Glendale, CA 91208</p>	<p>Hoover High School 651 Glenwood Rd. Glendale, CA 91202</p>

YOUTH ART

PARENT AND CHILD ART



Adult and child share creative time together using paint, paper, clay and found objects. We will learn basic art techniques and vocabulary while painting, printmaking, clay making, creating collage and fantasy crafting. We encourage freedom of expression and creativity. Classes also include games, songs, sharing books, story time, and show and tell.

\$10 material fee is payable on the first day of class.

10 weeks	Fee: \$85	Instructor: Aleka Corwin
Ages 2 - 5 230502-01	Brand Studios	9/13 Th 11:00 a.m. - 12:00 p.m.

DRAWING AND PAINTING



During 10 weeks we will explore traditional drawing and painting techniques to create realistic artwork. In drawing, students will learn to understand constructive drawing techniques, proportion, and perspective. In painting, we will focus on color mixing, value, painting in layers and composition. Students will be working from life and photo reference to build observational skills and develop creativity. Returning students will create advance projects and work with charcoal, watercolor, colored pencils, pastels, and oil on

canvas. The class instructor, Valentina Panosyan is a Los Angeles based fine artist with a Bachelor's Degree in Studio Arts from California State University of Los Angeles.

\$10 material fee is payable on the first day of class.

10 weeks	Fee: \$150	Instructor: Valentina Panosyan
Ages 4 - 17 230503-01	Brand Studios	9/10 M 5:00 p.m. - 6:00 p.m.
Ages 13 -17 230503-04	Brand Studios	9/10 M 6:15 p.m. - 7:15 p.m.
Ages 4 - 17 230503-03	Brand Studios	9/11 T 5:00 p.m. - 6:00 p.m.
Ages 4 - 17 230503-02	Chevy Chase Library	9/12 W 4:30 p.m. - 5:30 p.m.

3D Art and Painting Class



In 10 fun classes, students will create, construct and build various objects or sculptures in 3D with paper, clay, wire and found materials. Paint the object and its background or habitat. Capture the theme of the Masters like Matisse, Rousseau, Redon, Van Gogh, etc. in nature scenes and still life. Multi-media art exploration in form and colors will stimulate the brain, bring excitement of learning, and develop hand-eye coordination and tie-in to skill building in many areas. Art Show on last day of class.

\$10 material fee payable to instructor on first day of class.

10 Weeks	Fee: \$100	Instructor: Ann Marie Smith
Ages 6 - 12 260501-01	Pacific CC	9/12 W 5:15 p.m. - 6:30 p.m.
Ages 6 - 12 230501-01	Brand Studios	9/13 Th 5:15 p.m. - 6:30 p.m.

SYLVAN LEARNING

STEM Creations - Underwater World and Minecraft Design

Grades: 1-4



In this STEM Robotics course, your child is paired with a partner to design and create robots with an underwater theme. They will use the engineering and design process to create an underwater world of creatures that move, while learning cool STEM concepts. Then, students will be able to use their imaginations to design and program robotic models based on the popular computer game Minecraft™. They will take on design challenges to create everything from pickaxes to creepers to tool chests and game characters using LEGO® and then bring them to life through coding. Sylvan's unique STEM curriculum teaches STEM skills, terminology and creative problem solving skills through fun, hands-on activities. Best of all, we keep our parents in the know through emails home highlighting what the kids have learned that week.

8 weeks

230901-01
230901-02

Fee: \$150

Brand Studios
Dunsmore Comm. Bld.

Instructor: Sylvan Learning

9/13 Th 4:00 p.m. - 5:00 p.m.
9/12 W 4:00 p.m. - 5:00 p.m.

ACT Prep!

Grades: 10-12



With the ACT growing in popularity and ever increasing competition to get into the best universities, the stakes are high for preparing for college. Sylvan's ACT Prep can help your teen navigate the big test with ease, earning impressive scores along the way. From our high achievers to our kids who need an extra boost, teens of all test-taking abilities like going to Sylvan for ACT prep. Our tutors motivate and inspire teenagers with a personal approach that takes the mystery out of college admission tests. The results? You will not only see impressive ACT test scores, but you will also see your son or daughter grow with confidence. Sylvan's ACT course at Dunsmore Park will include 24 hours of in-person instructor-led sessions. Students will also have a free consultation with our advisers to review practice test scores. Included with the 6 week course is a one year subscription to Sylvan Prep.com and 2 practice tests.

6 weeks

230900-01

Fee: \$799

Dunsmore Comm. Bld.

Instructor: Sylvan Learning

9/12 W, Th 6:00 p.m.- 8:00 p.m.

YOUTH FITNESS

KARATE



Classes are designed to teach focus, leadership skills, self-discipline, and self-confidence. Learn basic grappling and self-defense moves. Kids and teens gain self-confidence to deal with bullies and strangers. Kids will also get into great shape through fun exercise and training drills. Class is taught by a Black Belt instructor. There is a material fee

for a uniform, belt and certificate payable on the first day of class.

10 Weeks

Ages 4 - 17 260803-01

Fee: \$105

Pacific CC

Instructor: United Self Defense Academy

9/12 W 6:00 p.m. - 6:45 p.m.

MAXIMUM POTENTIAL BASKETBALL

Hoopapalooza is designed to help improve an individual's strength, knowledge, and overall development of basketball. Join this class TODAY and you will be able to fulfill your aspirations. Learn the basics and advanced movements of the game. We will also cover dribbling, passing, shooting, and agility. ALL SKILL LEVELS ARE WELCOME!!!!

Mark Herring of Hoopapalooza Inc will be the instructor. Coach Herring is a native of North Carolina and has worked with the likes of Coach K (Duke Univ and Mens National Basketball Team), Kobe Bryant, Carmelo Anthony, and other NBA Stars. COME JOIN THE FUN!!!!

8 weeks

Ages 10-16 260601-01

Fee: \$150

Pacific CC

Instructor: Mark Herring

9/15 S 10:00 a.m. – 11:00 a.m.



YOUTH SPORTS

For program information, call (818) 937-7440.
To register, call (818) 548-2184.

YOUTH TENNIS CLASSES



Students will learn stroke development, drills, and singles and doubles strategy.

Bring water and a tennis racket to each class meeting. In addition, please bring \$5 cash equipment fee; exact change only.

LOCATIONS: Montrose Park, 3529 Clifton Pl.
Scholl Canyon Golf & Tennis, 3800 E. Glenoaks Blvd.

12 WEEKS

FEE: \$112 Mommy/Daddy/Me **AGES:** 4 – 5
\$112 Young Beginners **AGES:** 6 – 7
\$150 Beginning & Intermediate **AGES:** 8 – 17

DATES: September 11 – December 8 (No Class Thurs, Nov 22 or Sat, Nov 24)

SKILL LEVEL: MOMMY/DADDY/ME (This is a parent-involved class requiring daily participation)

<u>Number</u>	<u>Day of Week</u>	<u>Location</u>	<u>Time</u>
241101-01	Tuesdays	Montrose Park	3:15 p.m. – 4:00 p.m.

SKILL LEVEL: YOUNG BEGINNERS (6-7 years)

<u>Number</u>	<u>Day of Week</u>	<u>Location</u>	<u>Time</u>
241102-01	Thursdays	Montrose Park	3:15 p.m. – 4:00 p.m.
241102-02	Saturdays	Scholl Canyon	1:15 p.m. – 2:00 p.m.

SKILL LEVEL: BEGINNING (8-17 years)

<u>Number</u>	<u>Day of Week</u>	<u>Location</u>	<u>Time</u>
241103-01	Tuesdays	Montrose Park	4:00 p.m. – 5:00 p.m.
241103-02	Thursdays	Montrose Park	4:00 p.m. – 5:00 p.m.
241103-03	Saturdays	Scholl Canyon	2:00 p.m. – 3:00 p.m.

SKILL LEVEL: INTERMEDIATE (8-17 years)

<u>Number</u>	<u>Day of Week</u>	<u>Location</u>	<u>Time</u>
241104-01	Tuesdays	Montrose Park	5:00 p.m. – 6:00 p.m.
241104-02	Thursdays	Montrose Park	5:00 p.m. – 6:00 p.m.

KIDZ LOVE SOCCER

WWW.KIDZLOVESOCCER.COM



This instructional soccer experience includes age appropriate activities, skill demonstrations, fun games, and instructional scrimmages conducted in a non-competitive, recreational format. Perfect for first time players while being fun and engaging for kids with some experience. **Shin guards are required for all classes except Mommy/Daddy & Me.**

Excessive Heat and Rainout Hotline #: (888) 372-5803. Call this number up to 30 minutes prior to any scheduled class to verify class status. *If a class is cancelled due to weather and/or another City program, the class will be made up at the end of the session.*

8 WEEKS

FEE: \$104

All participants will receive a soccer jersey.

TUESDAY CLASS LOCATION: Sports Complex #2, 2200 Fern Lane, Glendale, CA 91208

DAY/SESSION DATES: Tuesdays, September 11 - October 30, 2018

<u>Number</u>	<u>Class Title</u>	<u>Age</u>	<u>Time</u>
241204-01	Soccer 2	7 - 10	3:30 p.m. – 4:15 p.m.
241203-01	Soccer 1	5 - 6	4:15 p.m. – 5:00 p.m.
241202-01	Tot/Pre Soccer	3.5 - 5	5:00 p.m. – 5:35 p.m.



SATURDAY CLASS LOCATION: Glorietta Park, 2801 N. Verdugo Rd., Glendale, CA 91208

DAY/SESSION DATES: Saturdays, September 22 – November 10, 2018

<u>Number</u>	<u>Class Title</u>	<u>Age</u>	<u>Time</u>
241201-01	Mommy/Daddy/Me	2 - 3.5	9:00 a.m. – 9:30 a.m.
241201-02	Mommy/Daddy/Me	2 - 3.5	9:35 a.m. – 10:05 a.m.
241202-02	Tot Soccer	3.5 - 4	10:15 a.m. – 10:45 a.m.
241202-03	Pre Soccer	4 - 5	10:45 a.m. – 11:20 a.m.
241203-02	Soccer 1	5 - 6	11:20 a.m. – 12:05 p.m.



6 WEEKS INDOOR CLASS

FEE: \$84

All participants will receive a soccer jersey.

CLASS LOCATION: Pacific Community Center Gymnasium, 501 S. Pacific Ave, Glendale, CA 91204

DAY/SESSION DATES: Monday, November 12 – December 17, 2018

<u>Number</u>	<u>Class Title</u>	<u>Age</u>	<u>Time</u>
241201-04	Mommy/Daddy/Me	2 - 3.5	4:30 p.m. – 5:00 p.m.
241203-03	Soccer 1	5 - 6	5:10 p.m. – 5:55 p.m.
241202-04	Tot/Pre Soccer	3.5 - 5	6:00 p.m. – 6:35 p.m.



CHALLENGER SPORTS FALL SOCCER

Join one of the largest fundamental soccer programs in Southern California. The Tiny Tykes program is a fantastic way to introduce your child to sport and caters to ages 2-5 years old!

Our soccer experts and child development professionals have designed an innovative curriculum that introduces your young soccer star to the basic skills needed in soccer as well as developing their motor, social, and psychological skills. All of our coaches are British experts at working with young children and will combine soccer with fun games, stories and music that keeps your children entertained and enthused to return the next week.

Come join our Cubs and Lions Program and join Lenny the Lion, our mascot, in a wonderful soccer adventure. Plus not only will you get an amazing experience in soccer you will also receive a FREE UNIFORM & BALL when you register! For more information and our coaching philosophy, or details of the curriculum please visit our website www.challengersports.com.

Dates: Fridays, September 14 – November 2, 2018
Location: Dunsmore Park, 4700 Dunsmore Ave., La Crescenta, CA 91214
Fee: \$110

<u>Session 1</u>	<u>Class Title</u>	<u>Age Group</u>	<u>Time</u>
241205-01	Mini Kickers Cubs	2-3 yrs.	9:30 a.m. - 10:15 a.m.
241205-02	Mini Kickers Lions	4-5 yrs.	10:30 a.m. – 11:15 a.m.

YOUTH VOLLEYBALL CLASSES

Students will learn how to volley, pass, hit, serve, and more. Bring drinking water and come ready to have fun! Please note start time is dependent upon gym availability due to school usage. Class may begin up to 30 minutes late and will extend up to 30 minutes on days where the school hosts volleyball matches (tentatively October 11). If class begins more than 30 minutes late, the instructor will make arrangements to extend the class ending date to accommodate for lost class time. Class will conclude no later than 8:30 p.m. One class date will be an “observation class” where the participants will have the opportunity to watch a varsity high school volleyball match and discuss their observations with the instructor. No play will occur during this class session.

12 CLASSES

FEE: \$125
COURSE: 241701-01 GRADES: 4th - 7th (9 -12 years)
COURSE: 241701-02 GRADE: 8th (13 -14 years)

DAYS: Tuesdays and Thursdays
DATES: September 4 – October 11, 2018
TIME: 6:30 p.m. – 8:00 p.m.
LOCATION: Crescenta Valley High School Gymnasium
 4400 Ramsdell Ave., La Crescenta, CA 91214

ADULT FITNESS/WELLNESS & DANCE

AIKIDO

Aikido is a peaceful, yet powerful Japanese martial art. This class is designed to teach students how to use an opponent's energy to gain control of a situation using beautiful and circular techniques. Great emphasis is placed on motion and the dynamics of movement.

10 Weeks	Fee: \$100		Instructor: Mark Adachi
260401-01	Pacific CC	9/10	M, Th 7:00 p.m. - 8:30 p.m. Sat 10:00 a.m. - 11:30 a.m.

ZUMBA



Zumba® Fitness- *Ditch the Workout, Join the Party!* This fun and easy-to-follow dance class incorporates Latin and International music into an effective and addictive workout. Zumba® Fitness choreography incorporates a wide variety of dance styles from around the world. Squats and lunges are also included. Come and join the party! Includes choreography from hip-hop, soca, samba, salsa, merengue, mambo, martial arts, and some Bollywood and belly dance moves.

10 Weeks	Fee: \$100			
260301-01	Pacific CC	9/13	Th	6:30 p.m. - 7:30 p.m.

SPECIAL NEEDS ACCOMMODATIONS:

The Community Services & Parks Department will provide any reasonable accommodation toward the inclusion of a participant. Please contact the Therapeutic Recreation Supervisor at (818) 548-3783 at least 72 hours prior to the start of the program. Ample time is required to determine the needs for each request.

TEACHING OPPORTUNITIES:

Contractual Instructors are needed to teach professional quality classes for all ages and interests at a wide variety of locations throughout the City of Glendale.

Contact:

Aylin Isayan, Customer Service Office
(818) 937-7216

Meline Amaspyan, Pacific Community Center
(818) 937-7242

ONLINE REGISTRATION SYSTEM: parksonline.glendaleca.gov



@MyGlendaleParks

#MyGlendaleParks

YOGA by Yoga Circle Downtown



Postures (Asanas) stretch, tone and strengthen the entire skeletal system, working not only the body’s frame, but the internal organs, glands and nerves as well. These postures are linked via a connective movement (Vinyasa) and powerful breath work. These breathing exercises (pranayama) refresh and cleanse the body and help to control the mind. The union (yoga) of these two forces (Asana and Pranayama), release physical and mental tension, liberating vast resources of energy with increased mental power, clarity and concentration. This practice over time will bring your being into peak physical and mental condition.

10 Weeks	Fee: \$150	Instructor: Kneko Fruge
230302-04	Chevy Chase Library	9/15 Sat 9:00 a.m. - 10:00 a.m.

YOGA AT THE TEAHOUSE



Enjoy an Integrated approach to Yoga combining the aspects of Alignment, Repetitive Movement coordinated with the Breath to safely open the joints optimizing blood flow, and oxygenation to the joints and organs to maintain and enhance good health. The class starts with a breathing meditation to transition from the everyday world into a calm state before starting the class. From there we move on to seated classical yoga positions, kneeling and then standing

positions. Class will end with a guided deep relaxation developing a calm mental attitude. Be sure to bring a yoga mat and dress comfortably for a good stretch.

8 Weeks	Fee: \$80	Instructor: Susan Quon
230302-01	Brand Teahouse	9/17 M 6:30 p.m. - 8:00 p.m.
230302-02	Brand Teahouse	9/20 Th 10:00 a.m. - 11:30 a.m.
230302-03	Brand Teahouse	9/20 Th 6:30 p.m. - 8:00 p.m.

DRAWING AND PAINTING

During 10 weeks we will explore traditional drawing and painting techniques to create realistic artwork. In drawing, students will learn to understand constructive drawing techniques, proportion, and perspective. In painting, we will focus on color mixing, value, painting in layers and composition. Students will be working from life and photo reference to build observational skills and develop creativity. The class instructor, Valentina Panosyan is a Los Angeles based fine artist with a Bachelor’s Degree in Studio Arts from California State University of Los Angeles.

\$10 material fee is payable on the first day of class.

10 weeks	Fee: \$150	Instructor: Valentina Panosyan
230503-05	Brand Studios	9/14 F 5:00 p.m. - 6:00 p.m.
230503-06	Chevy Chase Library	9/13 Th 4:30 p.m. - 5:30 p.m.

ADULT VISUAL ARTS

JOURNEYS THROUGH WATERCOLOR



Exploratory assignments lead students through elements of design, technique and the spontaneous aspects of watercolor. Demonstrations, experiments and practice will help you gain mastery of watercolor painting. Enthusiasm suggested along with some basic watercolor skills and materials.

A \$15 material fee is payable on the first day of class for printed handouts.

8 Weeks

Fee: \$95

Instructor: Peggy Reid

230101-01

Brand Studios

9/11

T

9:00 a.m. - 12:00 p.m.

230101-02

Brand Studios

9/11

T

12:30 p.m. - 3:30 p.m.

WATERCOLOR FRESH AND LOOSE



In this class, painters will explore breaking free of careful, timid techniques to create stronger, more effective visual statements. The emphasis will be toward fostering individual progress and developing each artist's unique voice. Participants of every skill or experience level are welcome.

10 Weeks

Fee: \$90

Instructor: John Byram

230102-01

Brand Studios

9/14

F

9:00 a.m. - 12:00 p.m.

MIXED MEDIA (Open Studio)

This class will teach students how to develop new visions and explore new methods by using water mediums such as gesso, ink, acrylic and pastels.

8 Weeks

Fee: \$65

Instructor: No Instructor

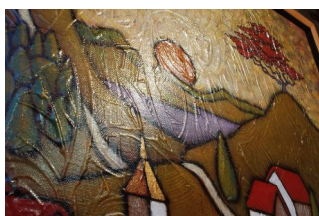
230103-01

Brand Studios

9/10

M

10:00 a.m. - 1:00 p.m.



ADULT SPORTS

For program information, call (818) 937-7440.
To register, call (818) 548-2184.



ADULT TENNIS CLASSES

The classes will include stroke development, drills, and singles and doubles strategy. Students should bring water, a tennis racket, and a \$5 equipment fee, cash only. Please bring exact change.

12 WEEKS **FEE:** \$150 **AGES:** 18+

Session Dates: Tuesdays, September 11 - November 27, 2018
 Thursdays, September 13 - December 6, 2018 *(no class November 22)*

Location: Montrose Park, 3529 Clifton Pl., Glendale, CA 91208

Skill Level: **BEGINNING**

<u>Number</u>	<u>Day of Week</u>	<u>Location</u>	<u>Time</u>
241001-02	Tuesdays	Montrose Park	6:00 p.m. - 7:00 p.m.
241001-04	Thursdays	Montrose Park	6:00 p.m. - 7:00 p.m.

Skill Level: **INTERMEDIATE**

<u>Number</u>	<u>Day of Week</u>	<u>Location</u>	<u>Time</u>
241002-05	Tuesdays	Montrose Park	7:00 p.m. - 8:00 p.m.
241002-03	Thursdays	Montrose Park	7:00 p.m. - 8:00 p.m.

SPECIAL NEEDS ACCOMMODATIONS:

The Community Services & Parks Department will provide any reasonable accommodation toward the inclusion of a participant. Please contact the Therapeutic Recreation Supervisor at (818) 548-3783 at least 72 hours prior to the start of the program. Ample time is required to determine the needs for each request.

TEACHING OPPORTUNITIES:

Contractual Instructors are needed to teach professional quality classes for all ages and interests at a wide variety of locations throughout the City of Glendale.

Contact:

Aylin Isayan, Customer Service Office
(818) 937-7216

Meline Amazaspyan, Pacific Community Center
(818) 937-7242

ONLINE REGISTRATION SYSTEM: parksonline.glendaleca.gov



Activity Card Fee Schedule:

Senior Activity Cards (60 years of age and older)	\$10/year
Adult Activity Cards (18 - 59 years old)	\$25/year

Cards may be purchased at one of the following locations:

- **Adult Recreation Center**, 201 E. Colorado St., Glendale, CA 91204
- **Glendale Sports Complex**, 2200 Fern Lane, Glendale, CA 91208
- **Maple Park Community Center**, 820 E. Maple St., Glendale, CA 91205
- **Pacific Community Center**, 501 S. Pacific Ave., Glendale, CA 91204
- **Sparr Heights Community Center**, 1613 Glencoe Way, Glendale, CA 91208

ADULT OPEN PLAY BADMINTON

Join a sport that gives you a great aerobic workout! All skill levels are invited to participate!



LOCATION #1: **Glendale Community College (South Gym)**
1500 N. Verdugo Rd., Glendale, CA 91208

Parking is available in Lot A. Dates are subject to Glendale College availability.

Fee: No daily fee. Activity Card is required (see fee schedule above).

Dates/Times: Mondays
September 10 - November 12, 2018, 8:00 p.m. - 11:00 p.m.
November 19, 2018 - June 10, 2019, 7:00 p.m. - 10:00 p.m.
(Closed : 12/24/18, 12/31/18, 1/21/19, 2/18/19, 4/15/19, and 5/27/19)

LOCATION #2: **Pacific Community Center Gym**
501 S. Pacific Ave., Glendale, CA 91205

Fee: \$5 per person per day payable at each class meeting.

Days/Times: Fridays, 6:00 p.m. - 10:00 p.m.

ADULT DROP-IN BASKETBALL

Open play basketball is available to adults of all skill levels in our gyms at Maple Park Community Center and Pacific Community Center. All skill levels are welcome to drop-in and get a good workout and play some pickup games. **Ask for the drop-in calendar from the front desk to know when drop-in goes dark on which day of the month due to facility reservations and special events. Drop-in calendar subject to change without notice. Please contact the Community Center for up-to-date schedule.**

Fee: Free for Activity Card Holders (see details above), \$2 for non-holders

Location: **Maple Park Community Center**
820 E. Maple St. Glendale, CA 91205

Days/Times: Monday through Friday 4:00 p.m. - 6:00 p.m.
Saturdays 9:00 a.m. - 5:00 p.m.

Location: **Pacific Community Center**
501 S. Pacific Ave. Glendale, CA 91204

Days/Times: Mondays and Thursdays 5:00 p.m. - 8:00 p.m.
Saturdays 12:00 p.m. - 4:45 p.m.



ADULT OPEN PLAY VOLLEYBALL

LOCATION #1: **Maple Park Community Center**
820 E. Maple St., Glendale, CA 91205

Fee: Free for Activity Card Holders (see details on pg. 44)
\$2 for non-holders

Days/Times: *Tuesdays, 6:00 p.m. - 9:00p.m.
(Ask for the drop-in calendar at the front desk to know when drop-in goes dark due to private reservations or special events.)



LOCATION #2: **Hoover High School (East Gym)***
651 Glendwood Rd., Glendale, CA 91202

Fee: No daily fee. Activity Card is required (see details on pg. 44).

Days/Times: Mondays and Thursdays, 8:30 p.m. - 10:15 p.m.

Dates: August 27, 2018 - June 10, 2019
(Closed: 9/3/18, 11/12/18, 11/19/18, 11/22/18, 12/24/18, 12/27/18, 12/31/18, 1/21/19, 2/11/19, 2/18/19, 3/18/19, 3/21/19, and 5/27/19)
Dates are subject to Hoover High School availability.

**Release of liability form is due each calendar year. Maximum 42 person capacity per night. Teams will be established in groups of 6 based on the sign-in sheet.*

MASTERS OPEN PLAY SOCCER (Ages 40+)

Get a healthy workout and meet new friends as you join other adult enthusiasts for casual pick-up games. This is a non-competitive, friendly play program. Pick-up games are available on Wednesday and Friday mornings.

Fee: Activity Card holders only. \$2 per player per day
(see details on pg. 44)

Days/Time: Wednesdays and Fridays, 7:30 a.m. - 9:30 a.m.

Location: Glendale Sports Complex
2200 Fern Lane, Glendale, CA 91208



MASTERS OPEN PLAY SOCCER (Ages 60+)



On Tuesdays and Thursdays, the City offers causal pick-up soccer for adults over age 60 in both a walking and running format. Walking soccer is designed to get seniors on the field to stay physically active, but without the intensity of a regular game. The programs will be offered at different times to allow for safe and enjoyable games for both intensities.

Fee: Activity Card holders only. \$2 per player per day
(see details on pg. 44).

Day/Time: Tuesdays and Thursdays, Walking Soccer 9:00 a.m. - 10:00 a.m.
Masters Soccer 10:00 a.m. - 12:00 p.m.

Location: Glendale Sports Complex
2200 Fern Lane, Glendale, CA 91208

CONTRACT CLASS REGISTRATION INFORMATION



<https://parksonline.glendaleca.gov>



Visit Registration Locations mentioned below.



Contact the Customer Service office at 818-548-2184
Monday - Friday 8:30 a.m. - 5:30 p.m.

ONLINE REGISTRATION

Our online registration service allows you to register for activities through the internet **24 hours a day, 7 days a week**. Below you will find instructions that will help you establish a customer account, ID# and a password. Please read all the information online, especially sections regarding **residency and refunds**.

Step 1: Find our website: parksonline.glendaleca.gov

Step 2: Log in with your credentials. If you have never logged in before, set up an online account. Be sure to add all of your family members. If you have forgotten your login credentials, please call (818) 548-2184 or email CSPcustomerservice@glendaleca.gov.

Step 3: Browse activities. Click on Activity Search, and Search Activities.

Step 4: Select activities by clicking on the shopping cart icon.

Step 5: Pay for activities by clicking on Shopping Cart on the top right of your screen.

REGISTRATION REFUND POLICY

- Refunds are not available online.
- Full refunds, less a \$15 administrative fee, will be given if refund is requested prior to the start of program by calling (818) 548-2752.
- Refunds after the start of the class program are contingent upon City approval and will only be considered through the conclusion of the 2nd week of scheduled class/programs.
- The refund will be assessed a \$15 administrative fee and prorated based on the number of classes held.
- DAY CAMPS: A \$20 administrative fee will be assessed per week per child for requests to cancel or transfer enrollment.
- Contract classes or Activities not reaching minimum numbers by the first week of classes may be cancelled and fees refunded. Service fees will not be refunded, in the event of class cancellation.

For more information,
call (818) 548-2752 or (818) 548-2184.

REGISTRATION LOCATIONS:

Register for Classes & Camps at any one of the following locations:

Civic Auditorium

(In person, phone, and online registrations will be accepted.)
1401 North Verdugo Rd., Glendale, 91208
(818) 548-2752 or (818) 548-2184

Adult Recreation Center Central Park Complex

201 E. Colorado St., Glendale, CA 91205
(818) 548-3775

Glendale Sports Complex

2200 Fern Lane, Glendale, CA 91208
(818) 548-6420

Maple Park Community Center

820 E. Maple St., Glendale, CA 91205
(818) 548-3783

Pacific Community Center

501 South Pacific Ave., Glendale, CA 91204
(818) 548-4098

Sparr Heights Community Center

1613 Glencoe Way, Glendale, CA 91208
(818) 548-2187

Verdugo Skate Park

1621 Cañada Blvd., Glendale, CA 91208
(818) 548-2786



**SENIOR CLASSES: Glendale
Community College Sponsored**

Ages 60+: The City of Glendale, in partnership with Glendale Community College, is sponsoring several classes to seniors FREE of charge. For information or class registration, please call (818) 243-5196.

FALL Session Dates: August 27, 2018 - December 12, 2018

The following classes typically take place at the following locations/days/times:

ADULT RECREATION CENTER

201 E. Colorado Blvd. Glendale, CA 91205
(818) 548-3775

Lip Reading

Mondays and Thursdays, 9:30 a.m. - 10:45 a.m.
Location: Activity Room

Film Appreciation

Wednesdays, 1:00 p.m. - 4:00p.m.
Location: Activity Room

SPARR HEIGHTS COMMUNITY CENTER

1613 Glencoe Way Glendale, CA 91208
(818) 548-2187

Self Discovery Via Writing

Wednesdays, 1:00 p.m. - 3:00 p.m.
Location: Garden Room

Ancient Civilization

Fridays, 12:30 p.m. - 2:30 p.m.
Location: Verdugo Room



For the joy of learning...

SENIOR CLASSES – City Sponsored

The City of Glendale Community Services & Parks Department is sponsoring the following classes for seniors ages 60+. Please call each center for information and registration details.

ALL CLASSES ARE ONGOING, YOU MAY REGISTER AT ANY TIME.

ADULT RECREATION CENTER

201 E. Colorado St., Glendale, CA 91205
Call (818) 548-3775 to register.

Fee Schedule: \$1 per class, payable at the beginning of each class. Activity card holders only. (Card must be presented upon payment.)

Activity Card Fee:

Senior Activity Cards (60 years of age and older)	\$10/year
Adult Activity Cards (18 - 59 years old)	\$25/year

Muscle Toning with Weights

Get Moving! There are mental and physical benefits from exercising regularly. Increase your energy, strength and bone density.

Fee: See fee schedule above.

<u>Days</u>	<u>Time</u>	<u>Instructor</u>
Mondays & Wednesdays	9:00 a.m. - 10:00 a.m.	Anne Kido
Tuesdays	8:00 a.m. - 9:00 a.m.	Patricia Kriste
Fridays	9:00 a.m. - 10:00 a.m.	Patricia Kriste

Senior Aerobics

Increase your energy and reduce your stress! Join us for a fun, low-impact aerobics class that will help improve flexibility and strength.

Fee: See fee schedule above.

<u>Days</u>	<u>Time</u>	<u>Instructor</u>
Mondays	8:00 a.m. - 9:00 a.m.	Patricia Kriste
Tuesdays & Thursdays	9:00 a.m. - 10:00 a.m.	Patricia Kriste

Zumba

Join us for this fun and exciting class, where you will dance to great music, meet great people, and burn a ton of calories without even realizing it.

Fee: See fee schedule above.

<u>Days</u>	<u>Time</u>	<u>Instructor</u>
Wednesdays & Fridays	8:00 a.m. - 9:00 a.m.	Denise Gonzalez

Tai-Chi for Seniors

Tai-Chi's slow dance-like movements bring balance, harmony and relaxation to participants. Come and learn the principles of this ancient form of exercise. The class meets in the Tai Chi Garden.

Fee: FREE. Activity Card Holders Only. See Activity Card fee schedule above.

<u>Days</u>	<u>Time</u>
Tuesdays, Thursdays, & Saturdays	10:00 a.m. - 11:00 a.m.

Pacific Community Center

501 S. Pacific Ave, Glendale 91204, Glendale, CA 91204
Call (818) 548-4098 to register.

Activity Card Fee:

Senior Activity Cards (60 years of age and older) \$10/year
Adult Activity Cards (18 - 59 years old) \$25/year

HEALTH EXERCISE

Keep active and stay young at heart. Improve muscle tone, strength, and coordination.

Instructors: Carol Thomsen, Monday and Wednesday; and Shawn Paschall, Friday

Days: Mondays, Wednesdays, and Fridays
Time: 9:30 a.m. - 12:00 p.m.
Fee: **Activity Card Holders \$3 per class**
 Non-Activity Card Holders \$6 per class.

LINE DANCING

Learn to line dance and exercise at the same time!

Instructor: Pauline Wong
Days: Mondays
Times: 12:30 p.m. - 2.30 p.m.
Fee: **Activity Card Holders \$2 per class**
 Non-Activity Card Holders \$4 per class.

PICKLEBALL

Come out and try this new sport, make some friends and see what everyone is talking about.

- ◇ **All Levels and Ages Welcome**
- ◇ **Coaching Available for Beginners**
- ◇ **Paddles Available**

3 Outdoor Courts

Days and Times:

Mondays	9:00 a.m. - 12:00 p.m.
	6:00 p.m. - 9:00 p.m.
Tuesdays	9:00 a.m. - 12:00 p.m.
Wednesdays	9:00 a.m. - 12:00 p.m.
	6:00 p.m. - 9:00 p.m.
Thursdays	9:00 a.m. - 12:00 p.m.
Saturdays	9:00 a.m. - 12:00 p.m.



4 Indoor Courts

Days and Times: Tuesdays 6:00 p.m. - 9:00 p.m.

SPARR HEIGHTS COMMUNITY CENTER

1613 Glencoe Way , Glendale, CA 91208

Call (818) 548-2187 to register.

The City of Glendale Community Services & Parks Department is sponsoring the following classes for seniors ages 60+.

Fee Schedule: Activity Card Holders \$1 per class
Non-Activity Card Holders \$2 per class, collected at the beginning of each class.

Activity Card Fee:

Senior Activity Cards (60 years of age and older) \$10/year
Adult Activity Cards (18 - 59 years old) \$25/year

ALL CLASSES ARE ONGOING. YOU MAY REGISTER AT ANY TIME.

Senior Fitness & Weight Training

There are mental and physical benefits from exercising regularly. Increase your energy, strength, and bone density.

Fee: See fee schedule above.

Instructor: Yvonne Longo

Session 1: Mondays Wednesdays & Fridays 9:30 a.m. - 10:30 a.m.

Session 2: Mondays and Wednesdays 10:30 a.m. - 11:30 a.m.

Specialty Fitness with Yvonne

This exercise class designed for adults with developmental disabilities encourages participants to get into shape by learning the fundamentals of basic exercise routines. Caregivers are welcome to work out alongside participants.

Fee: See fee schedule above.

Instructor: Yvonne Longo

Days/Time: Fridays 10:30 a.m. - 11:30 a.m.

Tai Chi for Seniors - Drop-In

Learn how to relax while learning this ancient form of exercising.

Fee: See fee schedule above.

Instructor: Rosalie Blum

Days/Time: Mondays, Wednesdays & Fridays 8:40 a.m. - 9:20 a.m.

Gentle Senior Yoga

This yoga class is geared to seniors to promote gentle stretching, balancing movements, and breathing techniques. Learn the skills necessary to relax and meditate to increase physical and mental health.

Fee: See fee schedule above.

Instructor: Rosalie Blum

Days/Time: Tuesdays 9:00 a.m. - 10:00 a.m.
Thursdays 9:00 a.m. - 10:00 a.m.

SPARR HEIGHTS COMMUNITY CENTER

1613 Glencoe Way, Glendale, CA 91208

Call (818) 548-2187 to register

The following activities are available to Activity Card holders only. No additional fee.

Woodcarving Class - Drop-In



Bring your favorite tools, create a work of art, and enjoy the companionship of like-minded folks.

Day/Time: Thursdays 10:00 a.m. - 11:00 a.m.

Senior Chat Group

Senior Chat Group - a place to share life's challenges, thoughts, and concerns. Topics include depression, anxiety, relationships, losses, and normal aging issues.

Day/Time: Tuesdays 10:00 a.m. - 11:30 a.m.

Sittin & Knittin



Knitters of all skill levels are invited to bring their yarn and needles and work on projects with others who share the same interest.

Day/Time: Tuesdays 12:15 p.m. - 1:30 p.m.

Bridge

Senior bridge players of all skill levels and experience can come to the center and participate in competitive bridge games.

Day/Time: Mondays 9:00 a.m. - 11:30 a.m.

Bingo

If you were born to yell, "BINGO!", come out and enjoy an exciting game of senior bingo for prizes and socialization.

Day/Time: Wednesdays 12:30 p.m. - 1:30 p.m.

ADULT RECREATION CENTER
201 E. Colorado St., CA 91205
Call (818) 548-3775 to register

Exercise Room at the Adult Recreation Center

The Adult Recreation Center offers a wide selection of fitness equipment including treadmills, cross-trainers, and stationary bikes along with numerous multifunction machines. Proper workout clothes and a towel is required.

Activity Card Holders Only. An additional ARC Gym Membership is required.

Fee Schedule:

Senior Activity Cards (60 years of age and older)	\$10/year
Adult Activity Cards (18 - 59 years old)	\$25/year
Senior ARC Gym Membership	\$50/year plus an Activity Card
Adult ARC Gym Membership	\$80/year plus an Activity Card

Exercise Room Hours

Mondays, Tuesdays, and Thursdays	8:00 a.m. - 7:30 p.m.
Wednesdays	9:00 a.m. - 7:30 p.m.
Fridays & Saturdays	8:00 a.m. - 4:30 p.m.
Sundays	Closed

Open Play Table Tennis

No matter what your skill level or how long it has been since you held a paddle, the time has come to play some ping pong. Make new friends and get a work out while having fun.

Activity Card Holders Only.

Days/Time:	Mondays, Tuesdays, Wednesdays	3:00 p.m. - 7:30 p.m.
	Thursdays	5:30 p.m. - 7:30 p.m.
	Fridays	3:00 p.m. - 4:30 p.m.

Location: ARC Dining Hall

ARC Bridge Club

Millions of people play bridge worldwide. Bridge is a trick-taking game using a standard deck played by four players.

Activity Card Holders Only.

Days/Time:	Duplicate Bridge	Tuesdays, Thursdays, Saturdays	11:30 a.m. - 4:30 p.m.
	Party Bridge	Thursdays	1:00 p.m. - 4:00 p.m.
	Beginning Bridge	Fridays	1:00 p.m. - 3:00 p.m.

Location: Activity Room and/or Multi-Purpose Room B



Drop-In Billiards, Backgammon, Chess, and Dominos

You can drop in Monday through Saturday to play some billiards, backgammon, Chess or dominos.

Activity Card Holders Only.

Days/Time: Mondays – Thursdays 8:00 a.m. - 7:30 p.m.
Fridays and Saturdays 8:00 a.m. - 4:30 p.m.

Location: Multi-Purpose Room A

Hours may change based on room availability

Bingo

Make new friends while playing this timeless classic.

Activity Card Holders Only, \$1 for 2 cards; All others, \$2 for 2 cards.

Days/Time: Fridays 10:00 a.m. - 11:00 a.m.

Location: Multi-Purpose Room B

Karaoke

Make new friends as you sing along to today's chart-topping pop hits or classic hits of all time.

Activity Card Holders Only.

Days/Time: Tuesdays & Fridays 1:00 p.m. - 4:00 p.m.

Location: Lounge

Senior Mixer



If you like to salsa, cha-cha, rumba, waltz or boogie, this is the place to be. The senior mixer is a great opportunity to socialize with fellow seniors in the greater community of Glendale, make new acquaintances and enjoy a good time. Please call the Adult Recreation Center for a list of specific activities that take place during the mixer.

Activity Card Holders Only.

Days/Time: Thursdays 2:00 p.m. - 4:30 p.m.

Location: Dinning Hall

* A suggested donation of \$2.00 is collected at the entrance to the mixer. This is a gratuity that is given to the DJ at the end of each event.

For more information, please call (818) 548-3775.

SENIOR SERVICES

Older, active adults are invited to enjoy meaningful personal and group activities offered at the City of Glendale community centers. Services and programs are available to assist in addressing basic needs, maximizing independence, and supporting the aging community. Information and referral is available for nutrition, housing, financial assistance, health, transportation, legal, and counseling services. Our programs are designed to provide growth, enhance personal dignity, and protect individual rights.

General Program Information:	(818) 548-3775
Nutritional Meals Program:	(818) 548-3778 or (818) 937-7405
Case Management Program Information:	
◊ English/Armenian	(818) 548-3771
◊ English/Spanish	(818) 548-2801

HOME DELIVERED MEALS



At-risk seniors 60 years of age and older who are homebound and unable to shop for or prepare meals may be eligible for seven frozen complete meals delivered weekly to their residence. A City of Glendale Case Manager meets with the client to provide this temporary service until a long-term solution can be implemented.

Suggested Donation: \$2.50 per meal



Donations are voluntary and confidential. A suggested donation is encouraged. For more information about home delivered meals and to inquire about eligibility, please contact (818) 937-7405.

NUTRITIONAL MEALS PROGRAM



Come visit our Senior Café where you can have a delicious hot meal, socialize, and join in festive events. Adults 60 years and older are eligible for our Nutritional Meals Program funded in part through the Los Angeles County Area Agency on Aging.

Suggested Donation: \$2.50 per meal

Reservations for Meals Sites and Times:

<p>Adult Recreation Center (ARC) 201 E. Colorado St. Glendale, CA 91205 <u>Meals are served:</u> 7 days a week at 11:30 a.m.</p>	<p>Sparr Heights Community Center 1613 Glencoe Way Glendale, CA 91208 <u>Meals are served:</u> Monday - Friday at 11:30 a.m.</p>	<p>Pacific Community Center 501 South Pacific Ave. Glendale, CA 91204 <u>Meals are served:</u> Monday, Wednesday & Fridays at 12:00 p.m.</p>
---	---	---

For meal information and reservations, please call: (818) 548-3778.



CASE MANAGEMENT

The Case Management program for seniors is designed to meet the special needs of frail individuals who may be experiencing difficulty in maintaining independent living arrangements.

**For Information & Referral Services,
please call: (818) 548-3771
Spanish Language Case Manager: (818) 548-2801**

Health Screenings & Blood Pressure Screenings for Seniors:

Free Health Screenings and Blood Pressure Screenings are offered at the Adult Recreation Center. For more information, call (818) 548-3775.

Blood Pressure Screenings for Seniors:

Free blood pressure screenings are offered at the Adult Recreation Center on the second Wednesday of every month at 10:00 a.m.

Transportation Services and Bus Pass Sales:

Transportation services include **Dial-A-Ride**, by reservation, and **MTA bus passes**, sold at the Adult Recreation Center, Sparr Heights Community Center and Pacific Park Community Center **all month long**.

The Metro bus pass for seniors is not honored by the Beeline. MTA and Beeline passes are sold from 8:30 a.m. to 3:30 p.m. at the Adult Recreation Center.

For more information about the Access Paratransit Program for disabled seniors, call (818) 548-3775 or (818) 548-2187.

Health Insurance Counseling and Advocacy Program (HICAP):

The state-registered Health Insurance Counseling and Advocacy Program (HICAP) Volunteer Counselors provide unbiased information, counseling and assistance on Medicare and related health care coverage, including:

- Original Medicare (Parts A & B)
- Medicare Prevention Services
- Medicare Part D (Prescription Drug Benefit)
- “Extra Help” with Medicare Part D
- Medicare Advantage: HMO’S & PPO
- Medicare Supplement (Medigap) Insurance
- Medi-Cal & Medicare Savings Programs
- Long-Term Care

Contact the Adult Recreation Center at (818) 548-3775 for more information.

Filming in Glendale's Parks & Community Buildings

Contact Aylin Isayan: (818) 548-3813

Email: ayisayan@glendaleca.gov

Requesting a Film Permit

Contact Information:
Aylin Isayan
Community Services & Parks
Office: (818) 548-3813
Fax: (818) 543-0793
Email: ayisayan@glendaleca.gov

1. Verify park/facility availability.
2. Obtain a Film Permit Application. Film permit application can be downloaded from www.parks.ci.glendale.ca.us/film-permits.aspx
3. Complete a Film Permit Application with Community Services & Parks.
4. Complete a Film Permit Application with the City Clerk's Office.
5. A site meeting may be scheduled in conjunction with the Facility Permit Application.
6. Make payment in full to Community Services & Parks.
7. Obtain an approved Facility Permit.



Filming in Glendale's Parks & Community Buildings

Film Permit Process



Filming in Glendale

Looking for a great place to host your next filming project? The City of Glendale Community Services & Parks Department welcomes filming in parks and community buildings! Our parks and locations can accommodate:

- ✓ Feature Films
- ✓ Commercials
- ✓ Music Videos
- ✓ Public Service Announcements
- ✓ Still Photo Shoots
- ✓ Reality TV Series
- ✓ Documentaries
- ✓ Director's Reels
- ✓ Student Films

Film Permits Include:

- Reserved site
- Professional Site Host onsite to ensure film crew has access to reserved site
- Well-maintained locations that are clean and ready for set dressing if applicable

Previous Film Projects Include:

- Criminal Minds TV Series
- Hyundai Commercial
- Ford Flex Commercial
- Cosmo Magazine Shoot
- Adidas Commercial
- The Bachelorette TV Series
- Nerf Commercial
- "Back in the Game" Sitcom Pilot
- Pedigree Commercial
- Battlefield America
- MTV's Parental Control
- Various other projects



Historic Buildings in Glendale Parks

Le Mesnager Barn at Deukmejian Wilderness Park 3429 Markridge Rd., Glendale, CA 91214

Deukmejian Wilderness Park occupies a rugged 709 acre site in the foothills of the San Gabriel Mountains at the northernmost extremity of the City of Glendale. Trails on the site provide spectacular views of the Crescenta Valley and the Los Angeles basin. The site is relatively undeveloped except for an area of approximately 12 acres in the southern part of the property (the Park Center area) that houses the historic Le Mesnager Barn.

For information, call (818) 548-3795.



Rockhaven Sanitarium 2713 Honolulu Ave., Glendale, CA 91020



Rockhaven is a rare surviving example of the Sanitariums that once flourished in the Crescenta Valley. First opened in 1923 by Agnes Richard as a “home for the feeble-minded women,” and later known as the “Screen Actor’s Sanitarium,” Rockhaven housed several Hollywood celebrities, such as Billie Burke, Flo Zigfield, Clark Gable’s first wife, as well as Marilyn Monroe’s mother. Over time, Agnes Richards purchased several neighboring Craftsman-style houses, and in the late 1920s and 1930s built several Spanish Colonial Revival style buildings which were designed specifically for the purpose of medical care and patient accommodations,

expanding the facility to an approximately 3.5 acre site.

The character of this property was as much defined by its landscape as it was by its buildings. The buildings were, and still are, connected by meandering landscaped pathways, intimate gardens, patios, courtyards and expansive perimeter gardens to create a home-like setting for the individual care of the patients. In 1966, Rockhaven was awarded for its landscaping by Los Angeles Beautiful, Incorporated.

The City purchased the property in 2008 from Ararat Home, who had purchased the property in 2001 to operate a convalescent facility. The facility remains closed to the public at this time due to safety concerns.

You can read more about the facility by visiting the City’s website, www.glendaleca.gov, and searching Rockhaven in the search bar.

TOURS OF HISTORIC FACILITIES IN GLENDALE PARKS



FOR RESERVATIONS, PLEASE CALL
COMMUNITY SERVICES & PARKS AT (818) 548-2184
FOR TOUR INFORMATION, PLEASE CALL THE DOCENTS AT THE VARIOUS SITES

Doctors House Museum & Gazebo

Inside Brand Park, 1601 West Mountain Street Glendale, CA 91201
(818) 242-7447



HOURS OF OPERATION

Guided Tours: Sundays 2:00 p.m. - 4:00 p.m. .
(Closed during the month of July, on holidays, and during inclement weather)
Docent: The Glendale Historical Society
Suggested Donation: \$5

FACILITY DESCRIPTION

- The Doctors House Museum is an authentically restored Queen Anne-Eastlake style home built around 1888.
- The Doctors House lawn area and gazebo are available for reservation for weddings and other special events.
- Smoking, barbecues, and amplified sound are NOT permitted because of the historic nature of the facility.

HISTORY

- The two-story house originally stood at 921 East Wilson Avenue in Central Glendale, but was moved to its present location in 1980.
- Four early doctors owned it in succession, giving the house its name. It was later occupied by silent screen icon Nell Shipman and her family in the early 1900s.
- Threatened with demolition in 1979, community activists organized to save it and formally incorporated The Glendale Historical Society on October 24, 1979.
- The Glendale Historical Society dedicated the Doctors House to the City of Glendale on September 12, 1982, after spending thousands of volunteer hours on restoration.
- The Doctors House is registered as Glendale Register of Historic Resources #6.

"Shoseian" Whispering Pine Teahouse & Friendship Garden



Inside Brand Park, 1601 West Mountain Street Glendale, CA 91201 (626) 390-0633

HOURS OF OPERATION

Friendship Garden: Monday - Thursday 10:00 a.m. - 3:00 p.m.
Teahouse Events/Programs: Third Sunday of the month. Go to www.shoseianteahouse.com for event details.
Docent: Friends of Shoseian

FACILITY DESCRIPTION

The traditional teahouse was built in 1974 through the combined efforts of the Sister Cities of Glendale and Higashi-Osaka, Japan. It is one of the few traditional Japanese Teahouses open to the public in the United States.

- The Teahouse, which was designed by architect Hayahiko Takase, is a unique blending of western and eastern design and an apt expression of the spirit of cross-cultural community.
- Nestled at the foot of the Verdugo Mountains beside a koi pond in a charming Japanese-style garden setting, the Teahouse is in a unique position to outreach to the community of Glendale and greater Los Angeles.
- The Japanese Friendship Garden surrounding the Teahouse is available for weddings and other special events.

HISTORY

- The Teahouse represents the spirit of goodwill, lasting peace and friendship between the people of Japan and the United States.
- Given the name "Shoseian" or "Whispering Pine Teahouse" by Genshitsu Sen, the Fifteenth Grand Tea Master of the Urasenke School of Tea in Japan, the Teahouse is designated an official Tearoom. Dr. Yamazaki of Higashi-Osaka provided initial support for the Teahouse and Gardens.
- Through recent cooperative efforts by the City of Glendale and Friends of Shoseian, the Teahouse was refurbished and designated as Glendale Register of Historic Resources #46.

Casa Adobe de San Rafael & Park

1330 Dorothy Drive
Glendale, CA 91202; (818) 248-8151

HOURS OF OPERATION

Daily 8:00 a.m. – Dusk

Guided Tours: September - June: First Sunday of the Month, 1:00 p.m. - 3:00 p.m.

July & August: Every Sunday, 1:00 p.m. - 3:00 p.m.

Suggested Donation: \$2

Docent: Glendale Beautiful



FACILITY DESCRIPTION

- The park is 1.6 acres in size.
- Amenities include a picnic pavilion which is available for small company or family picnics or gatherings, a turf area that is available for larger festival-type events, gas grill, sink, electrical outlets, and public restroom facilities.
- Smoking, barbecues, and amplified sound are NOT permitted because of the historic nature of the facility

HISTORY

- Casa Adobe de San Rafael is registered as California Landmark #235 and Glendale Register of Historic Resources #3.
- The Casa was built around 1870 by Tomas Sanchez, former sheriff of Los Angeles County, using adobe blocks to form the walls, which were then covered with stucco.
- In 1875, the property was sold, left abandoned, and fell into a ruinous state.
- In 1930 the Casa was purchased by the California Medicinal Wine Company who planned to tear down the structure and remove the large eucalyptus trees on the property. Local neighbors and community members stopped the demolition and began a campaign to preserve the house as a historic landmark.
- The City of Glendale purchased the adobe in 1930 and by 1932 La Casa de Adobe de San Rafael was completely refurbished.
- Today, the adobe includes a Monterey-style corridor (covered porch), beautiful sunken garden, brick patio, sandy brown tile roof, and long narrow front windows adorned with teal shutters. Interior furnishings are from the nineteenth century.

Catalina Verdugo Adobe



2211 Bonita Drive Glendale, CA 91208; (818) 244-2841

HOURS OF OPERATION

Daily 8:00 a.m.- Dusk

Guided Tours: Scheduled Tours Only - Please call to schedule

Docent: Days of the Verdugos Heritage Association

FACILITY DESCRIPTION

- The park is 1.3 acres in size and is nestled at the base of the Verdugo Mountains in a residential neighborhood.
- Amenities include a walking trail, a garden, and a shaded picnic area with wooden tables, benches, and electric outlets.
- Smoking, barbecues, and amplified sound are NOT permitted because of the historic nature of the facility.

HISTORY

- The Catalina Verdugo Adobe is registered as California Historical Landmark #637 and Glendale Register of Historic Resources #1.
- The Adobe is the oldest structure in the City of Glendale. As with many early structures, the construction date of the Verdugo Adobe is uncertain. It is said the Adobe was built in 1828, but some research suggests that it dates to 1860. It was the home of Catalina Verdugo who, with her brother Julio, owned much of today's Northeast Glendale. Their father, Don Jose Maria Verdugo, was the original recipient of Rancho San Rafael, the Spanish land grant that encompassed large portions of Glendale, Burbank, and Eagle Rock.
- The grounds contain the remnants of the "Oak of Peace," under which a meeting was held in 1847 that led, a few days later, to the signing of the peace treaty, Treaty of Cahuenga, that ended the Mexican-American War.
- The Adobe originally consisted of the main room and the south wing. The north wing was added in the early 1900s, after it was sold to land developer F.P. Newport.
- In 1946, the property was sold to Dr. Ernest Bashor, and his family remained there until it was sold to the City of Glendale in 1989. It is fortunate that the historic value of the original house remained preserved.
- At present, the Museum focuses on the Verdugo family and their lifestyle in the 1800s.

Adult Recreation Center Facility Rental Information

**201 E. Colorado St.
Glendale, CA 91205
(818) 548-3775**

Amenities include:

Dinning Hall
Multi-Purpose Room
Activity Room
Upper Courtyard
Seminar Rooms

Steps To Rent:

1. Choose the event type, date & time.
2. Complete the Community Center Reservation Request Form and submit to the Center.
3. After completing the form, staff will contact you regarding availability and fees.
4. Upon agreement, make arrangements with the Facility Supervisor to finalize all permit requirements.



Brand Park, Casa Adobe de San Rafael & Catalina Verdugo Adobe

Facility Rental Information

Brand Park, 1601 W. Mountain St.
Casa Adobe de San Rafael, 1330 Dorothy Dr.
Catalina Verdugo Adobe, 2211 Bonita Dr.
(818) 548-2752

Steps to Rent:

1. Choose the event type, date & time.
2. Contact the Customer Service office at (818) 548-2184 for availability.
3. Visit the Customer Service office located 1401 N. Verdugo Rd., Glendale, CA 91208 to reserve the facility.



Brand Park Amenities include:

Friendship Garden
Victorian Gazebo
Private Garden
Koi Pond



Casa Adobe de San Rafael Amenities include:

Picnic Pavilion
Grass Area
Brick Patio



Catalina Verdugo Adobe Amenities include:

Picnic Tables
Natural Setting

Cerritos Park Facility Rental Information

**3690 San Fernando Rd.
Glendale, CA 91204
(818) 548-2752**

Amenities include:

Picnic Pavilion
Water Feature
Propane Tanks Allowed for BBQ
Fenced Grass Area

Steps to Rent:

1. Choose the event type, date & time.
2. Contact the Customer Service office at (818) 548-2184 for availability.
3. Visit the Customer Service office located 1401 N. Verdugo Rd., Glendale, CA 91208 to reserve the facility.



Civic Auditorium Facility Rental Information

1401 N. Verdugo Rd.
Glendale, CA 91208
(818) 548-2787
www.glendalecivic.com

Amenities include:

Upper & Lower Levels
Stage
Conference Rooms
Dressing Rooms
State-of-the-Art Kitchens on both levels
Parking Structure
Sound system
Chairs, Tables & Audio Visual Equipment

Steps to Rent:

1. Choose the event type, date & time.
2. Contact the Civic Auditorium at (818) 548-2787 for availability.
3. Visit the Civic Auditorium 1401 N. Verdugo Rd., Glendale, CA 91208 to reserve the facility.



Deukmejian Wilderness Park Facility Rental Information

3429 Markridge Rd.
Glendale, CA 91214
(818) 548-2752

Amenities include:

Picnic Pavilion
Amphitheatre
Grass Area

Steps to Rent:

1. Choose the event type, date & time.
2. Contact the Customer Service office at (818) 548-2184 for availability.
3. Visit the Customer Service office located 1401 N. Verdugo Rd., Glendale, CA 91208 to reserve the facility.



Dunsmore, Joe Bridges Clubhouse, Griffith Manor & Brand Studios Facility Rental Information

Dunsmore, 4700 Dunsmore Ave
Joe Bridges Clubhouse, 2531 E. Glenoaks Blvd.
Griffith Manor, 1551 Flower St.
Brand Studios, 1601 W. Mountain St.
(818) 548-2752

Amenities include:

- Multi-Purpose Room
- Tables
- Chairs
- Refrigerator
- Warming Oven *
- Sink
- Outdoor Park Areas

Steps to Rent:

1. Choose the event type, date & time.
2. Contact the Customer Service office at (818) 548-2184 for availability.
3. Visit the Customer Service office located 1401 N. Verdugo Rd., Glendale, CA 91208 to reserve the facility.

*No Warming Oven at Brand Studios;
a microwave is available.



Maple Park Facility Rental Information

820 E. Maple St.
Glendale, CA 91205
(818) 548-3783 or (818) 548-3694

Amenities include:

- 2 Large meeting rooms
- A full kitchen with large warming oven and refrigerator
- Computer Lab
- A Recreation Room with ping pong, air hockey and foosball
- A full court gymnasium with kitchenette
- A 700 square foot outdoor terrace

Steps To Rent:

1. Choose the event type, date & time.
2. Complete the Community Center Reservation Request Form and submit to the Center.
3. After completing the form, staff will contact you regarding availability and fees.
4. Upon agreement, make arrangements with the Facility Supervisor to finalize all permit requirements.



Lower Scholl Canyon Park, Palmer Park & Verdugo Park Facility Rental Information

Lower Scholl, 2849 E. Glenoaks Blvd.
Palmer Park, 610 E. Palmer Ave
Verdugo Park, 1621 Canada Blvd.
(818) 548-2752

Amenities include:

Lower Scholl

2 Picnic Pavilions
Playground
BBQ Grills

Palmer Park

2 Picnic Pavilions
BBQ Grills
Sink
Wadding Pool
Basketball Courts

Verdugo Park

5 Picnic Pavilions
Baseball Field
Basketball Court
Playground

Steps to Rent:

1. Choose the event type, date & time.
2. Contact the Customer Service office at (818) 548-2184 for availability.
3. Visit the Customer Service office located 1401 N. Verdugo Rd., Glendale, CA 91208 to reserve the facility.



Pacific Community Center Facility Rental Information

**501 S. Pacific Ave.
Glendale, CA 91204
(818) 548-4098**

Amenities include:

5 Meeting rooms
Computer Lab
Recreation Room with billiards, ping pong, and foosball
Lounge furniture for relaxation
Upper Terrace with picnic tables and umbrellas
Multi-Purpose gymnasium with a stage and kitchenette
An outdoor picnic area

Steps To Rent:

1. Choose the event type, date & time.
2. Complete the Community Center Reservation Request Form and submit to the Center.
3. After completing the form, staff will contact you regarding availability and fees.
4. Upon agreement, make arrangements with the Facility Supervisor to finalize all permit requirements.



Sparr Heights Community Center Facility Rental Information

1613 Glencoe Way
Glendale, CA 91208
(818) 548-2187

Amenities include:

Dining Hall with Stage
Multi-Purpose Room with Wall Mirrors
Activity Room with Billiards
Outdoor Patio with Patio Tables &
Chairs

Steps To Rent:

1. Choose the event type, date & time.
2. Complete the Community Center Reservation Request Form and submit to the Center.
3. After completing the form, staff will contact you regarding availability and fees.
4. Upon agreement, make arrangements with the Facility Supervisor to finalize all permit requirements.



Glendale Sports Complex Facility Rental Information

**2200 Fern Lane
Glendale, CA 91208
(818) 548-6420**

Amenities include:

2 artificial turf soccer fields
Baseball field
2 Softball fields
Concession building
Meeting room

Steps To Rent:

1. Choose the event type, date & time.
2. Contact the Sports Office at (818) 548-7440 to check on availability and fees.
3. Visit the Spots office to finalize permit requirements.



Verdugo Skate Park Facility Rental Information

1621 Canada Blvd.
Glendale, CA 91208
(818) 548-2786

Amenities include:

6-9 Ft. Clover Bowl with 11 ft. Over-Vert section
6-10 ft. Kidney Bowl
Street Plaza with rails and ledges

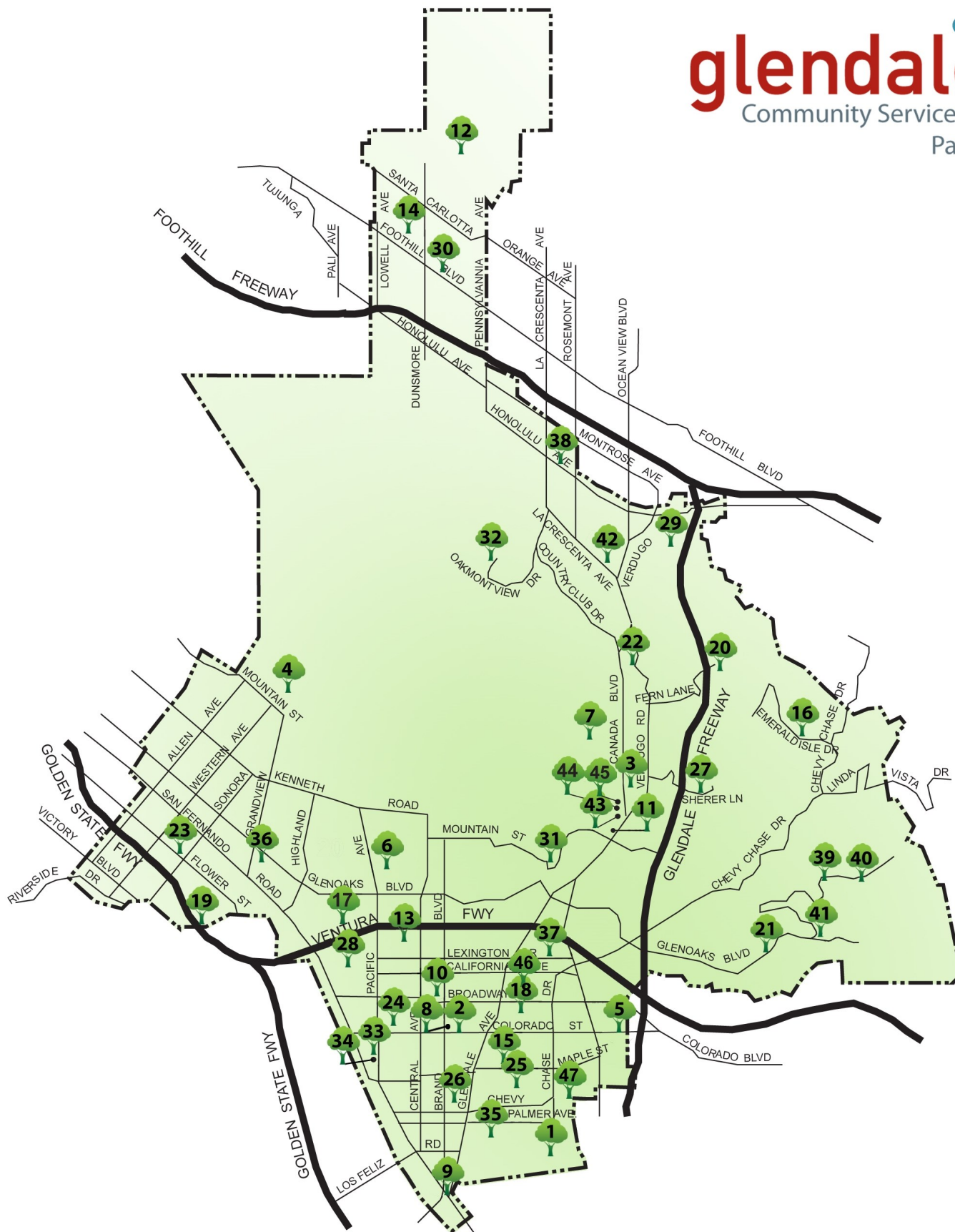
Steps To Rent:

1. Choose the event type, date & time.
2. Contact the Sports Office at (818) 548-7440 to check on availability and fees.
3. Visit the Spots Office to finalize permit requirements.



FACILITY INFORMATION

1	Adams Square Mini Park	1020 E. Palmer Ave. Glendale, CA 91205
2	Adult Recreation Center & Central Park	201 E. Colorado St. Glendale, CA 91205
3	Babe Herman Little League Field	1726 Canada Blvd. Glendale, CA 91208
4	Brand Park	1601 W. Mountain St. Glendale, CA 91201
5	Carr Park	1615 E. Colorado St. Glendale, CA 91205
6	Casa Adobe de San Rafael & Park	1330 Dorothy Dr. Glendale, CA 91202
7	Catalina Verdugo Adobe	2211 Bonita Dr. Glendale, CA 91208
8	Central Park Paseo	220 S. Brand Blvd. Glendale, CA 91202
9	Cerritos Park	3690 San Fernando Rd. Glendale, CA 91204
10	Chess Park	227 N. Brand Blvd. Glendale, CA 91202
11	Civic Auditorium	1401 N. Verdugo Rd. Glendale, CA 91208
12	Deukmejian Wilderness Park	3429 Markridge Rd. Glendale, CA 91214
13	Doran Gardens Mini Park	327 W. Doran St., Glendale, CA 91203
14	Dunsmore Park	4700 Dunsmore Ave. Glendale, CA 91214
15	Elk Mini Park	800 E. Elk Ave. Glendale, CA 91205
16	Emerald Isle Park	2130 Lenore Dr. Glendale, CA 91206
17	Fremont Park	600 W. Hahn Ave. Glendale, CA 91203
18	Glendale Heritage Garden	141 S. Cedar St. Glendale, CA 91205
19	Glendale Narrows Riverwalk	300 Paula Avenue, Glendale, CA 91201- West Entrance
20	Glendale Sports Complex	2200 Fern Lane Glendale, CA 91208
21	Glenoaks Park	2531 E. Glenoaks Blvd. Glendale, CA 91206
22	Glorietta Park	2801 N. Verdugo Rd. Glendale, CA 91208
23	Griffith Manor Park	1551 Flower St. Glendale, CA 91201
24	Harvard Mini Park	425 W. Harvard Glendale, CA 91204
25	Maple Park and Community Center	820 E. Maple St. Glendale, CA 91205
26	Maryland Avenue Park	812 S. Maryland Avenue, Glendale, CA 91205
27	Mayors Bicentennial Park	1787 Loma Vista Dr. Glendale, CA 91208
28	Milford Mini Park	601 W. Milford Ave. Glendale, CA 91203
29	Montrose Park	3529 Clifton Place, Glendale, CA 91208
30	New York Park	4525 New York Ave. Glendale, CA 91214
31	Nibley Park	1103 E. Mountain St. Glendale, CA 91207
32	Oakmont View Park	2940 Oakmont View Dr. Glendale, CA 91208
33	Pacific Park & Community Center	501 S. Pacific Ave. Glendale, CA 91204
34	Pacific Community Pool	509 S. Pacific Ave. Glendale, CA 91204
35	Palmer Park	610 E. Palmer Ave. Glendale, CA 91205
36	Pelanconi Park	1000 Grandview Ave. Glendale, CA 91201
37	Piedmont Park	1145 E. Lexington Dr. Glendale, CA 91206
38	Rockhaven - CLOSED FOR PUBLIC USE	2713 Honolulu Ave., Glendale, CA 91020
39	Scholl Canyon Athletic Fields	3200 E. Glenoaks Blvd. Glendale, CA 91206
40	Scholl Canyon Golf Course & Tennis Center	3800 E. Glenoaks Blvd. Glendale, CA 91206
41	Scholl Canyon Park & Picnic Area	2849 E. Glenoaks Blvd. Glendale, CA 91206
42	Sparr Heights Community Center	1613 Glencoe Way Glendale, CA 91208
43	Stengel Field	1601 Canada Blvd. Glendale, CA 91208
44	Verdugo Park	1621 Canada Blvd. Glendale, CA 91208
45	Verdugo Skate Park	1621 Canada Blvd. Glendale, CA 91208
46	Wilson Mini Park	1101 E. Wilson Glendale, CA 91206
47	Windsor Mini Park	1300 E. Windsor Glendale, CA 91205



Parks, Community Centers, Historic Sites, and Special Use Facilities

COMMUNITY SERVICES & PARKS (CSP) MONTHLY E-NEWSLETTER

Get the most up-to-date information about what is happening in the Community Services & Parks Department by signing up to receive the department's monthly E-Newsletter. Learn about upcoming events, community meetings, registration deadlines, parks projects, ongoing programs and services, program success stories, and more.



E-mail us at CSP@glendaleca.gov, or click on the button above to be added to the e-mail distribution list.

(P.S. We never make your e-mail address available to any other company or organization.)

PHONE DIRECTORY

Administrative Office (818) 548-2000 Fax: (818) 548-3789

RECREATION PROGRAMS

- Customer Service Office (818) 548-2184
- Contract Classes Registration (818) 548-2184, (818) 548-2752
- Trails & Open Space Program (818) 548-3795
- Party On the Go!/Glendale Rocks! Climbing Wall (818) 937-7242
- Senior Programs & Services (818) 548-3775
- Sports Programs for Adults and Youth (818) 548-6420
- Therapeutic Recreation Programs (818) 548-3783
- Verdugo Skate Park (818) 548-2786
- Volunteer Program (818) 548-2792
- Youth & Family Services Program (818) 937-7246

FACILITY RESERVATION AND INFORMATION

- Adult Recreation Center (818) 548-3775
- Brand Studios (818) 548-3782
- Civic Auditorium (818) 548-2787
- Glendale Sports Complex & Sports Fields (818) 548-6420
- Maple Park Community Center (818) 548-3783
- Pacific Community Center (818) 548-4098
- Pacific Park Pool (818) 937-7433
- Park & Picnic Reservations (818) 548-2184
- Photography Permits (818) 548-2184
- Sparr Heights Community Center (818) 548-2187
- Wedding Reservations (818) 548-2184