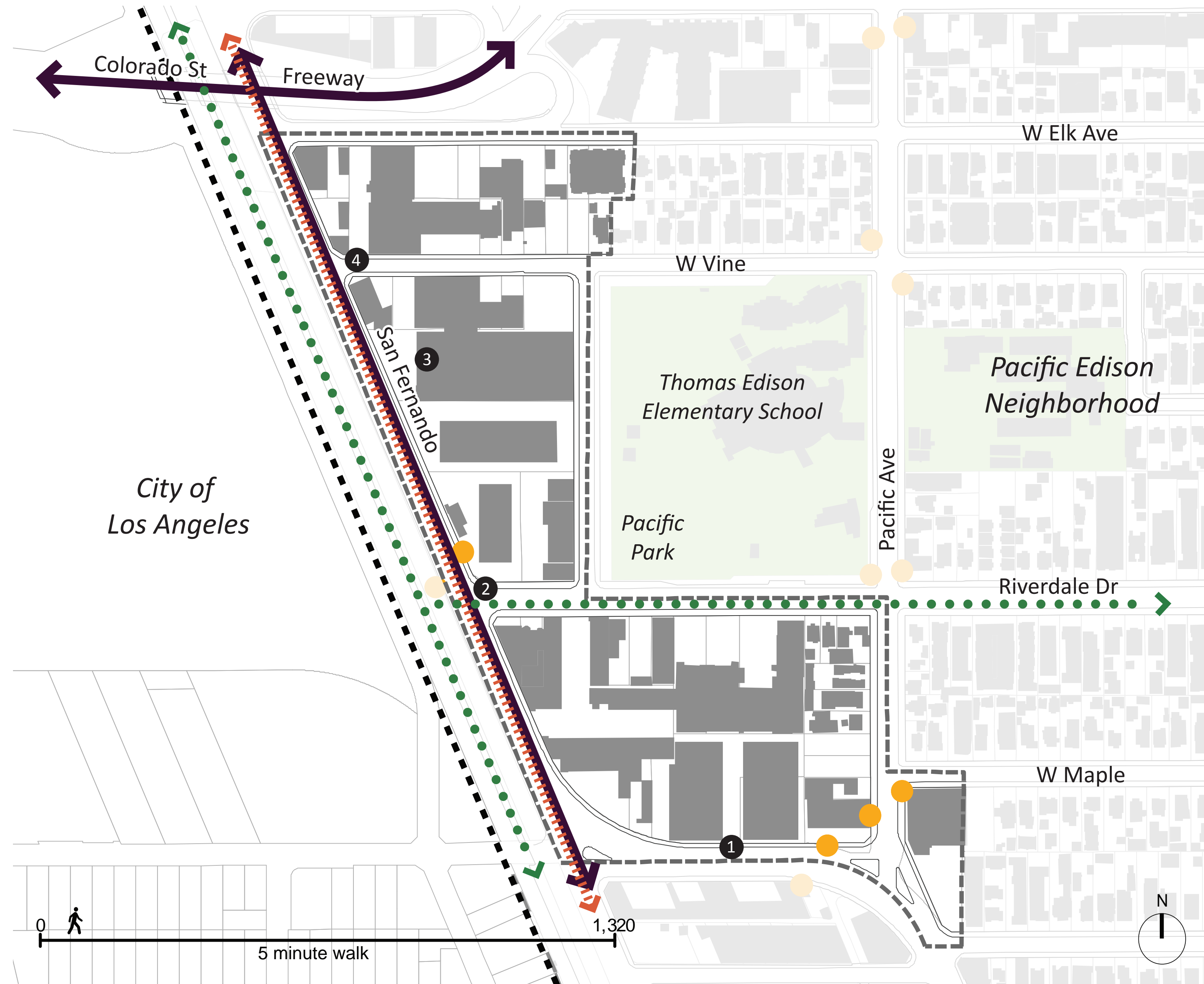


Pacific Edison Center

The Pacific Edison Center bounded to the west and east by San Fernando Road, Pacific Park and Edison Elementary School and Pacific Avenue to the east, located along San Fernando Road, west of Pacific Park and Edison School, and Pacific Avenue to the east, and Colorado Street to the North and south of Colorado Street area is almost exclusively occupied by one-story, large-footprint, light industrial buildings with the exception of single-family houses along the west side of Pacific Avenue, and a new multi-family building facing Colorado Street.



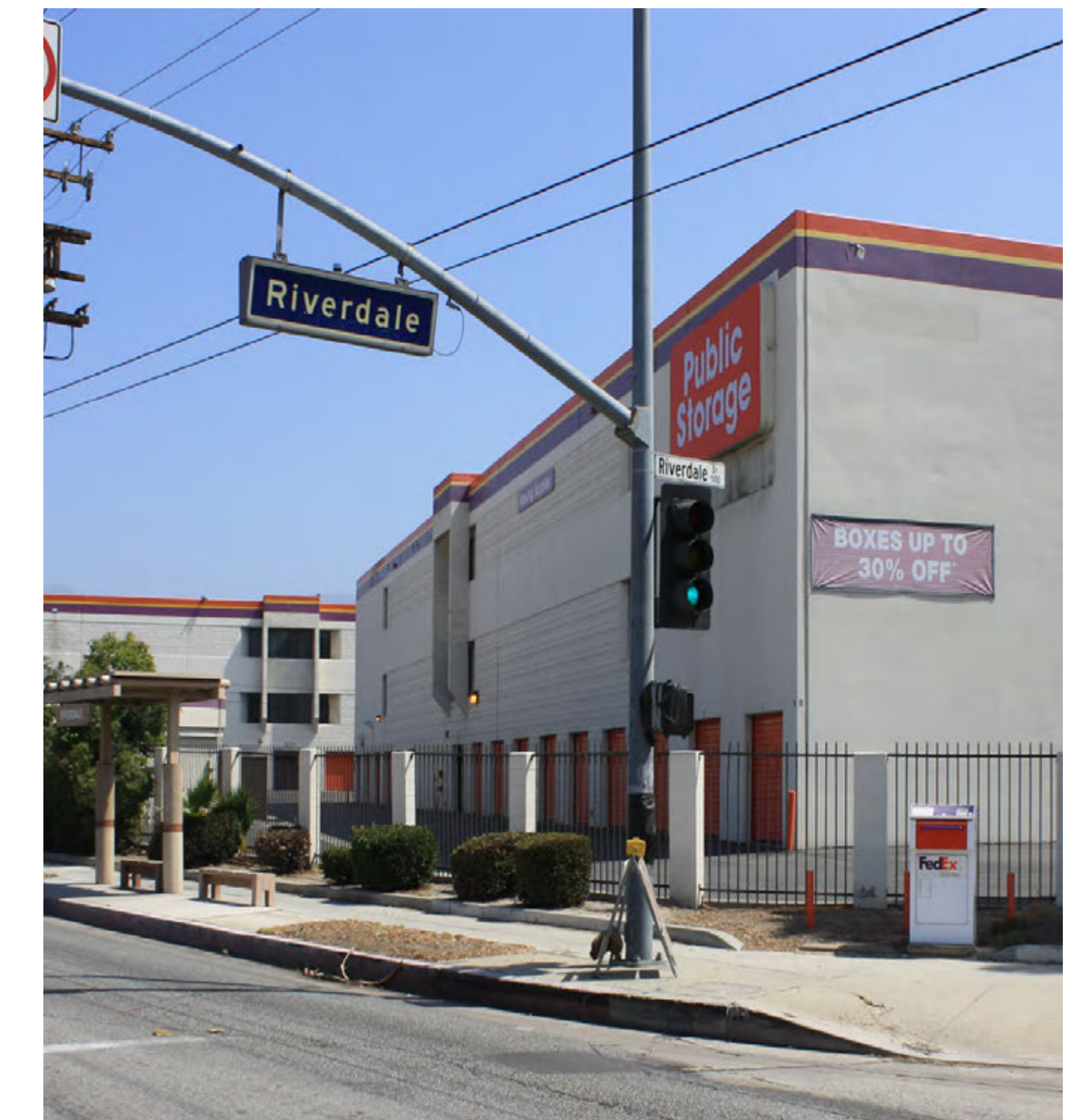
- Legend**
- Civic
 - Open Space
 - Opportunity Sites
 - Glendale Register
 - Historic District
 - Neighborhood Boundary
 - Arterial/Freeway
 - Metro 15 Minute Route
 - Bicycle Path
 - Terminating Vistas
 - Bus Stops
 - Train Station
 - ✦ Gateways
 - ✦ Design Elements
 - ◇ Vision Viewpoint

Statistics

Developable Area	20.2 ac.	Residential Units	Commercial	Office Space	Industrial	Institutional		
Population	130	Apartments	49	47,490 SF	General Office	40,460 SF	276,890 SF	55,390 SF
		Condominiums	0		Medical Office	0 SF		
		Single Family	2					



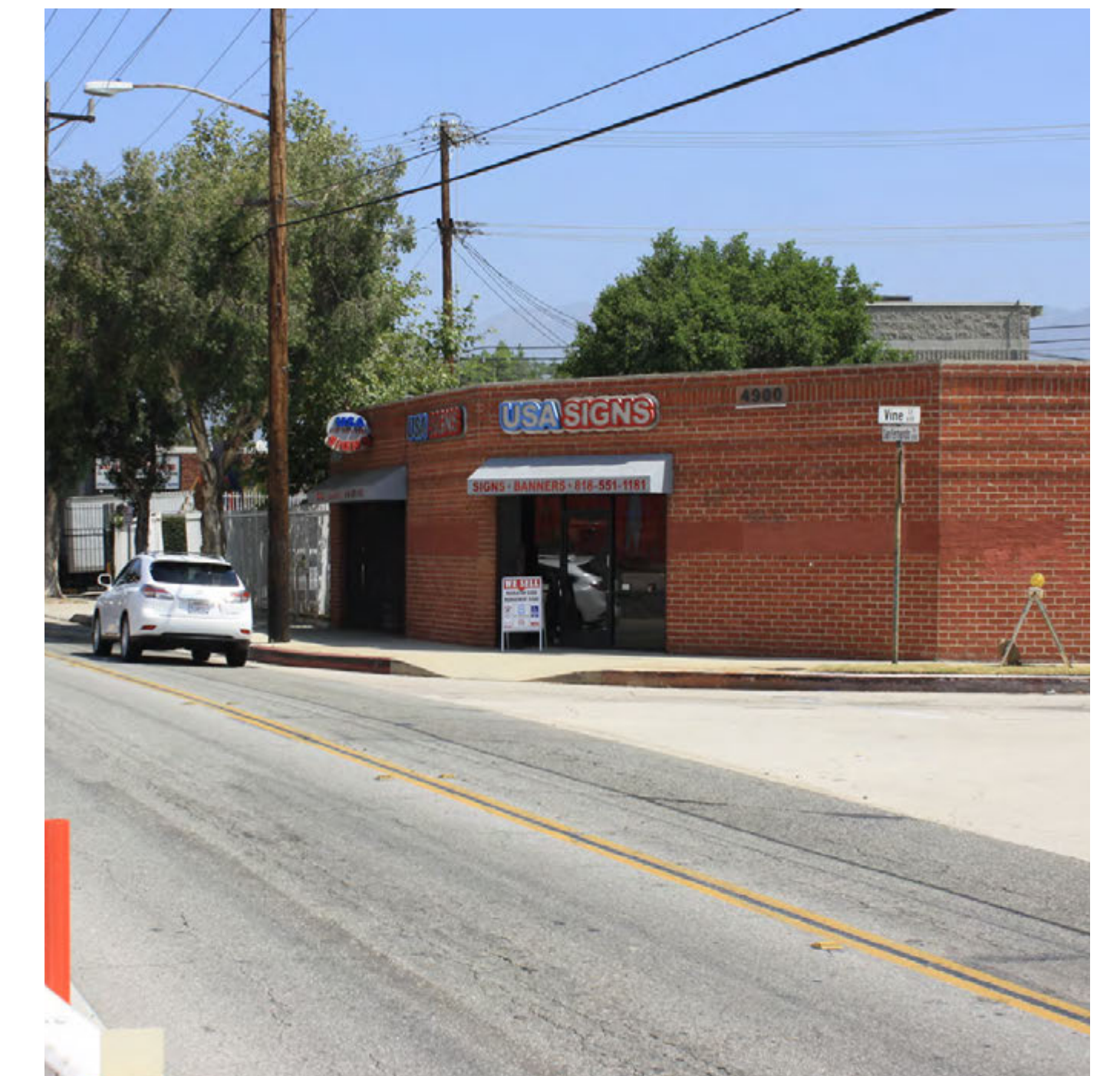
1 San Fernando Road



2 San Fernando Road/Riverdale



3 San Fernando Road



4 San Fernando Road/Elk