

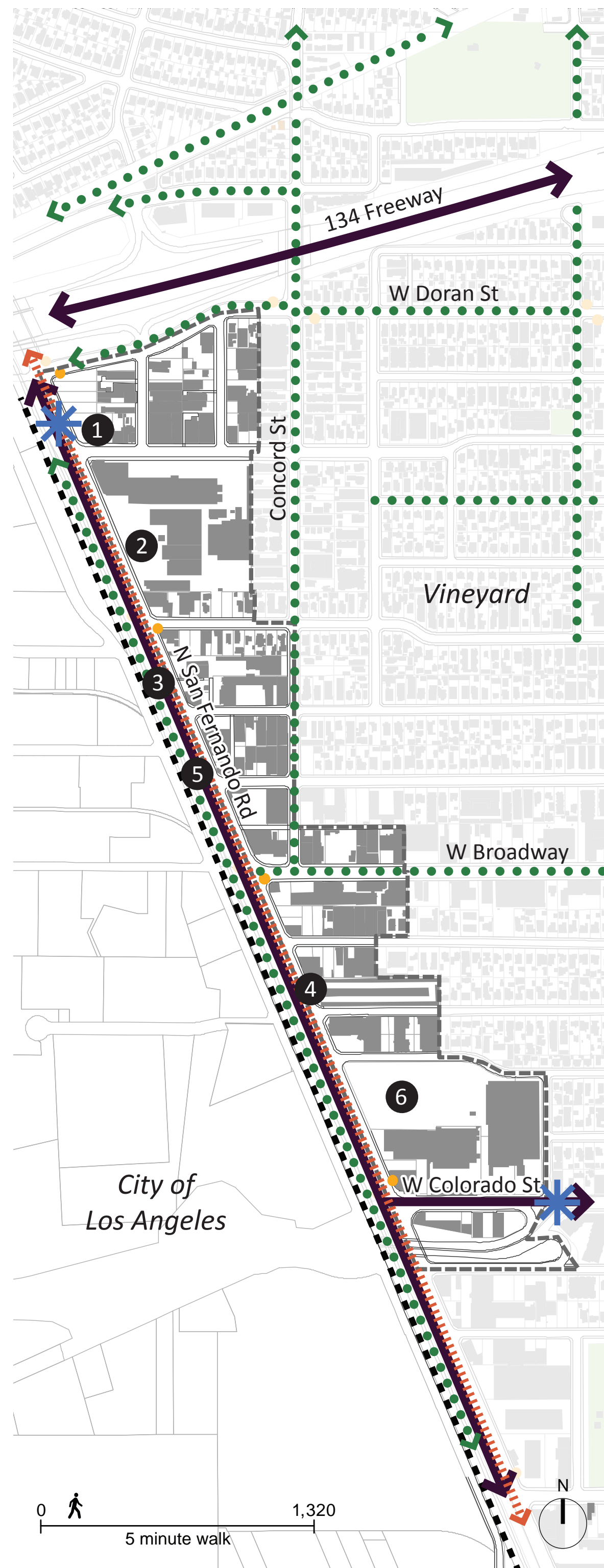
San Fernando Road

(North of Colorado Boulevard)

North San Fernando Road Corridor is bounded by the 134 Freeway to the north and Colorado Avenue to the south. The railroad right-of-way passes along its western edge and existing at grade crossings occur at Doran Street and Broadway. San Fernando Road is a major arterial with access to the 134 Freeway. It has many industrial, storage, and creative arts uses in 1-and 2-story buildings.

Statistics

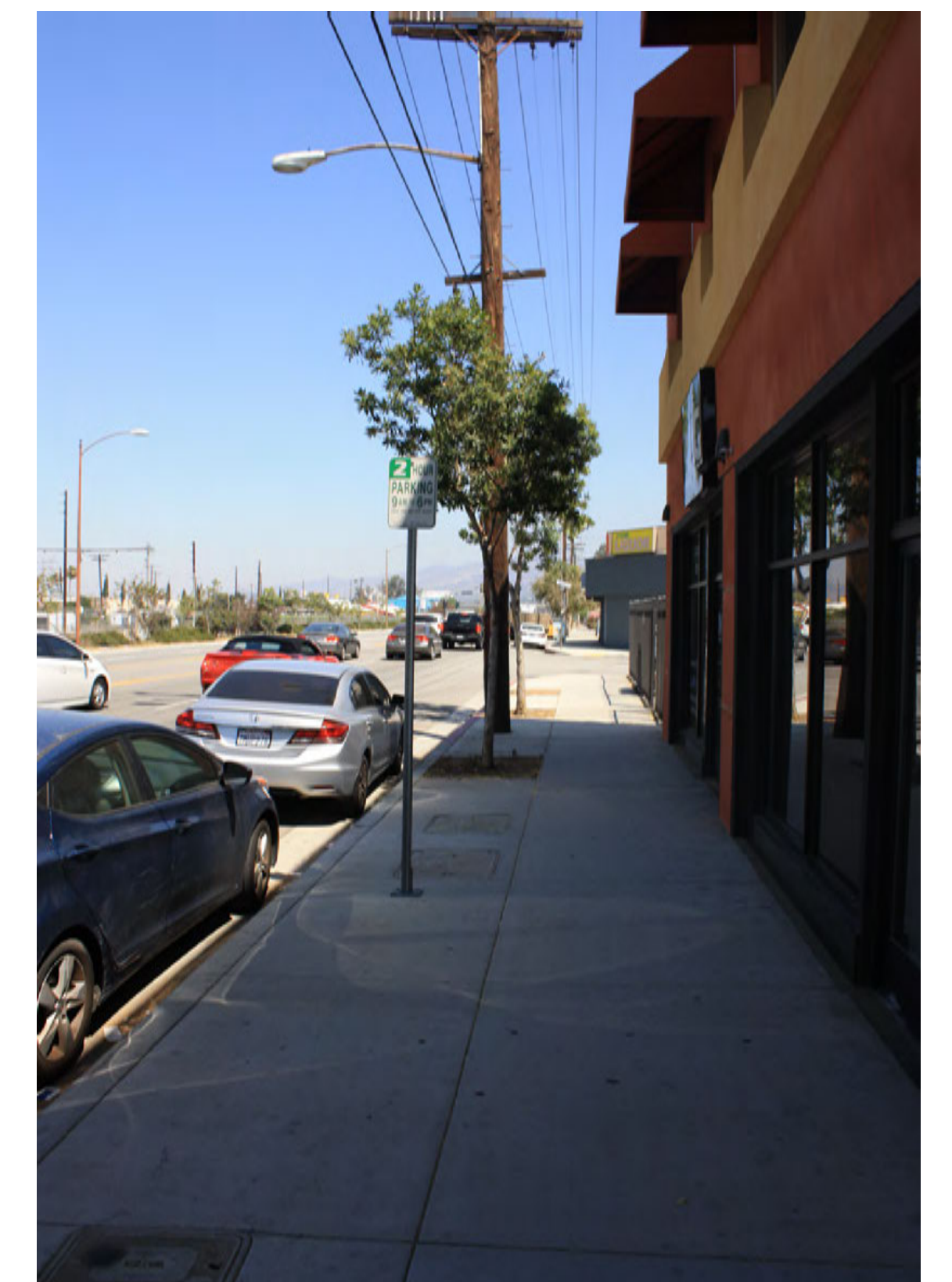
Developable Area	50 ac.	Residential Units	Commercial	Office Space		Industrial	Institutional
Population	90	Apartments	29	297,810 SF	General Office 89,460 SF	561,190 SF	0 SF
% of COG Pop.	0.1%	Condominiums	0		Medical Office 0 SF		
% of SGCP Pop.	0.0%	Single Family	5				



1 Public Storage



3 HUB



5 San Fernando Sidewalk



2 San Fernando / Milford



4 Extra Space Storage



6 The Home Depot

- Legend**
- Civic
 - Open Space
 - Pipeline Projects
 - Glendale Register
 - Historic District
 - Neighborhood Boundary
 - Arterial/Freeway
 - Metro 15 Minute Route
 - Bicycle Path
 - Terminating Vistas
 - Bus Stops
 - Train Station
 - ✦ Gateways
 - ✦ Design Elements
 - ✦ Vision Viewpoint