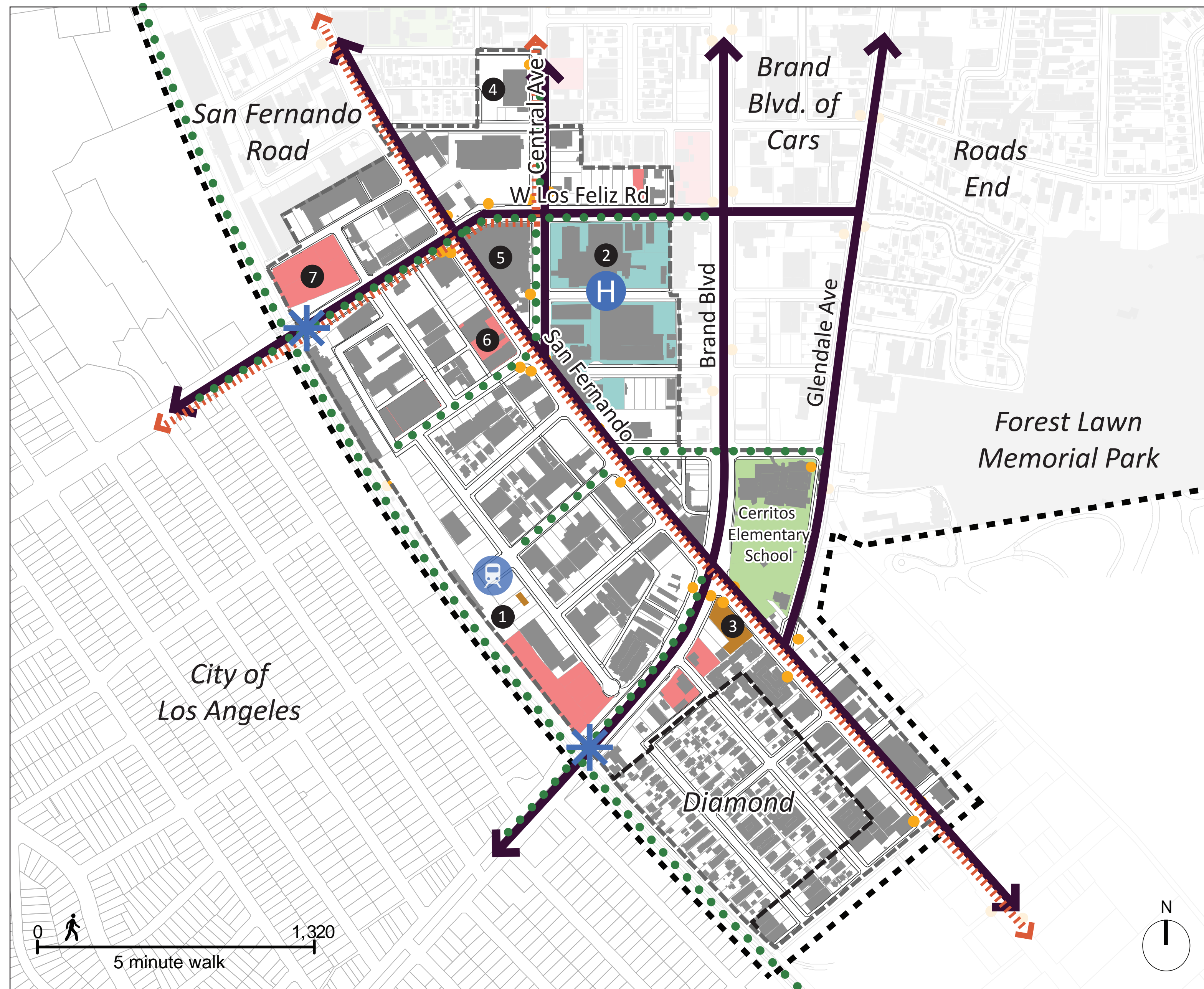


# Tropico TOD

This urban, transit-oriented district (TOD) located in the southwestern portion of Glendale is home to Glendale's Metrolink Station, Cerritos Elementary School, and Glendale Memorial Hospital. It is comprised of an eclectic mix of uses and building types including single family houses, light industrial business, several multi-family buildings, and uses that support the hospital. This area is designated as a regional transit priority area with an emphasis on multi-modal connectivity, walkability, and residential development.

## Statistics

Developable Area	83.5 ac.	Residential	Commercial	Office Space	Industrial	Institutional
Population	1,760	Apartments 684	463,260 SF	General Office 65,580 SF	416,360 SF	25,280 SF
		Condominiums 0		Medical Office 125,060 SF		
		Single Family 12				



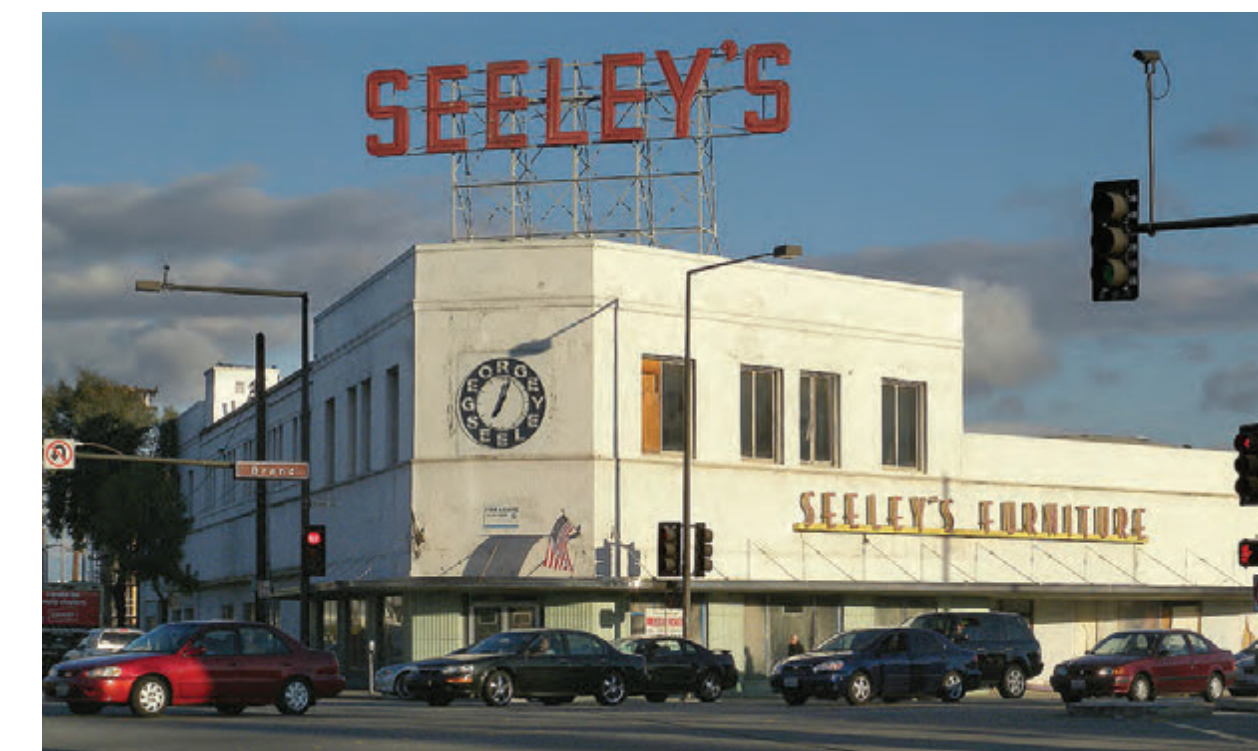
- Legend**
- Civic
  - Open Space
  - Pipeline Projects
  - Glendale Register
  - Historic District
  - Neighborhood Boundary
  - Arterial/Freeway
  - Metro 15 Minute Route
  - Bicycle Path
  - Terminating Vistas
  - Bus Stops
  - ⊕ Train Station
  - ✦ Gateways
  - ✦ Design Elements
  - ⬆ Vision Viewpoint



1 Glendale Train Station



2 Glendale Memorial Hospital



3 Seeley's Building



4 Verdugo Job Center



5 Camden Glendale Triangle



6 Link



7 Modera Tropico