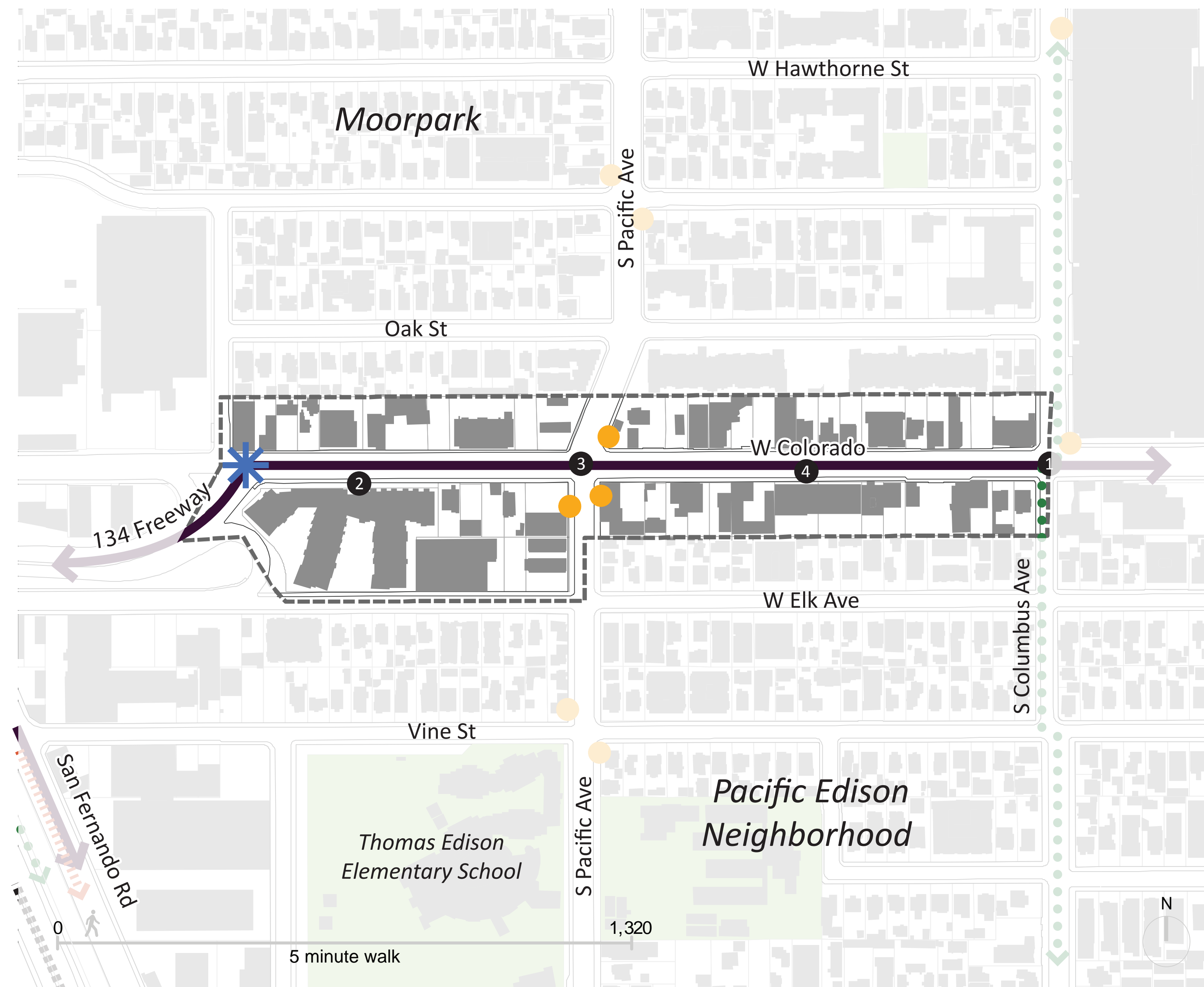


West Colorado Corridor

West Colorado Street between San Fernando Road and Columbus Avenue, is a major arterial highway with public transit service. At the west end of the corridor is the I-5 Freeway Ramp, which in it's current configuration encourages high traffic speeds, resulting in a potential safety conflict for pedestrians crossing it. It is lined by low-scale retail and commercial stand-alone shops and strip malls and 3-and 4-story mixed-use projects west of Pacific Avenue near the I-5 Freeway ramps.

Statistics

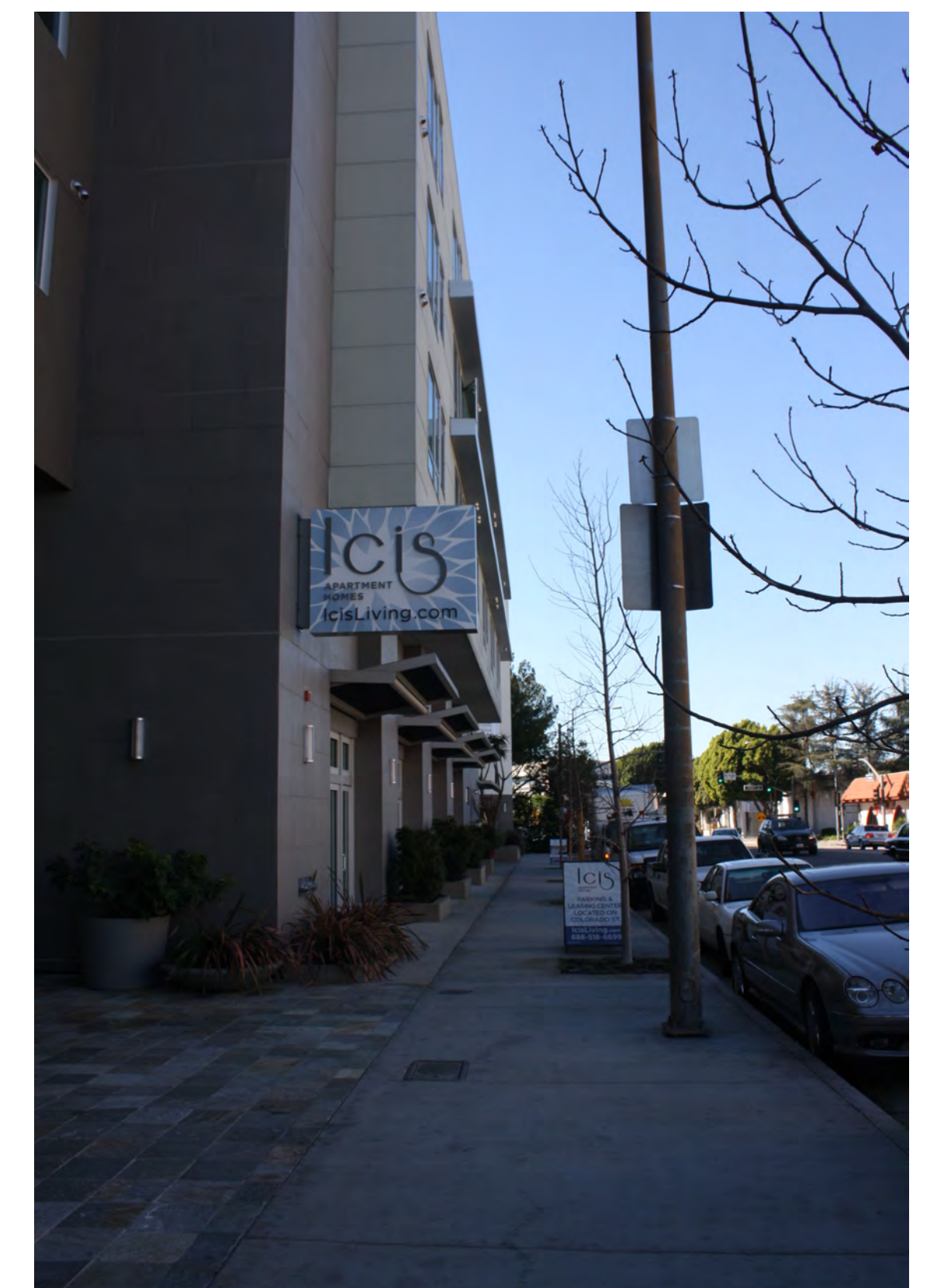
| Developable Area | 12 ac. | Residential Units | | Commercial | Office Space | | Industrial | Institutional |
|------------------|--------|-------------------|-----|------------|----------------|-----------|------------|---------------|
| Population | 550 | Apartments | 217 | 89,100 SF | General Office | 52,930 SF | 20,930 SF | 0 SF |
| % of COG Pop. | 0.3% | Condominiums | 0 | | Medical Office | 4,860 SF | | |
| % of SGCP Pop. | 0.6% | Single Family | 0 | | | | | |



- Legend**
- Civic
 - Open Space
 - Pipeline Projects
 - Glendale Register
 - Historic District
 - Neighborhood Boundary
 - Arterial/Freeway
 - Metro 15 Minute Route
 - Bicycle Path
 - Terminating Vistas
 - Bus Stops
 - Train Station
 - Gateways
 - Design Elements
 - Vision Viewpoint



1 Columbus / Colorado



2 Neighborhood Street View



3 Pacific / Colorado



4 Colorado Boulevard