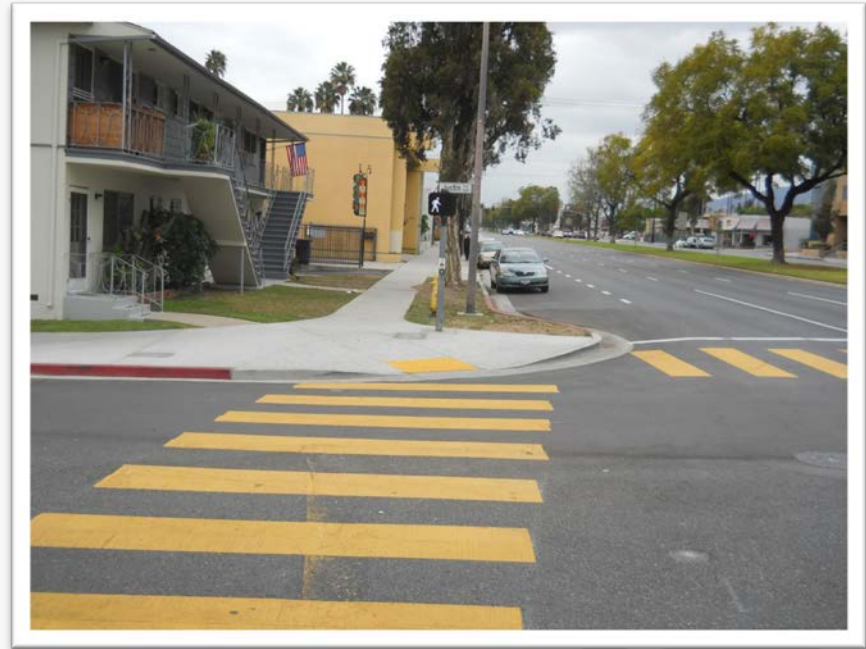


# WELCOME TO THE GUSD BOARD MEETING FOR SAFE ROUTES TO SCHOOL IMPROVEMENTS PROJECT HOOVER-KEPPEL-TOLL SCHOOLS AND E. CHEVY CHASE DRIVE



March 6, 2018



# PRESENTATION OVERVIEW

Overall SRTS Program in Glendale	Pg 1
Reasons for Project	Pg 2
Project Location	Pg 3
Anticipated Construction Schedule	Pg 5
Scope of Work	Pg 6
Project Impacts	Pg 13
Mitigating Measures	Pg 14
Public Notification	Pg 15
Proposed Project Improvements Exhibits	Pg 16
Project Updates & Contact	Pg 25

# OVERALL SRTS PROGRAM IN GLENDALE

- There are over 100 private and public schools in Glendale
- SRTS Program began in 2012.
- To date, completed 4 phases.
- SRTS Program has completed improvements around 16 Glendale schools, including:

- |                          |                              |
|--------------------------|------------------------------|
| 1. Balboa E.S.           | 9. Woodrow Wilson M.S.       |
| 2. Columbus E.S.         | 10. Cerritos E.S.            |
| 3. Thomas Edison E.S.    | 11. Dunsmore E.S.            |
| 4. Thomas Jefferson E.S. | 12. Benjamin Franklin E.S.   |
| 5. Horace Mann E.S.      | 13. Lincoln E.S.             |
| 6. John Marshall E.S.    | 14. Valley View E.S.         |
| 7. John Muir E.S.        | 15. Verdugo Woodlands E.S.   |
| 8. R.D. White E.S.       | 16. Chamlian Armenian School |

# REASONS FOR PROJECT

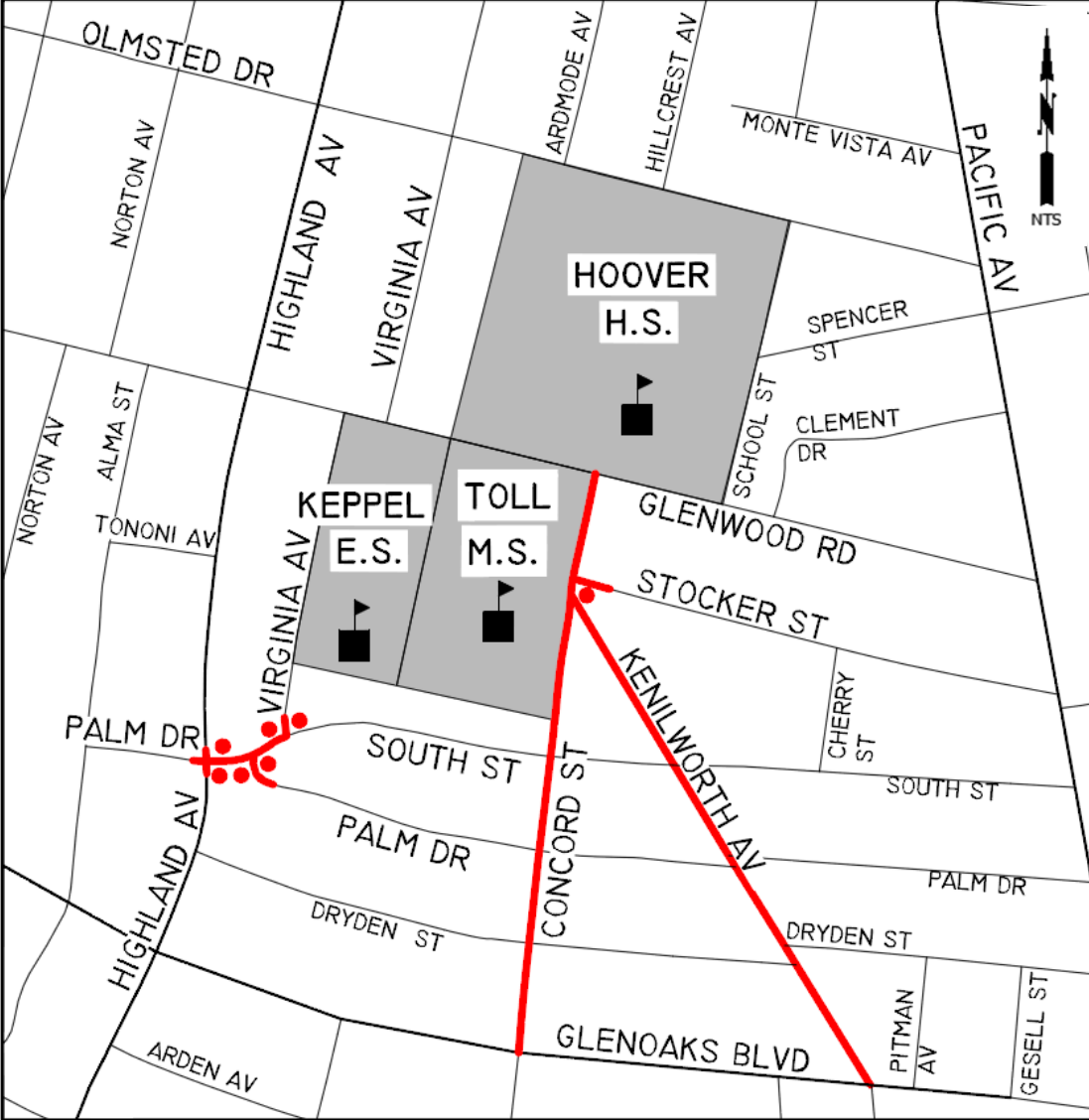
## GOALS

- Enhance safety of the pathways, sidewalks, ADA accessibility, visibility, and crossings
- Encourage students to use active mode of transportation (walk, bike, scooter, skateboarding)
- Use public transit

## RESULTS

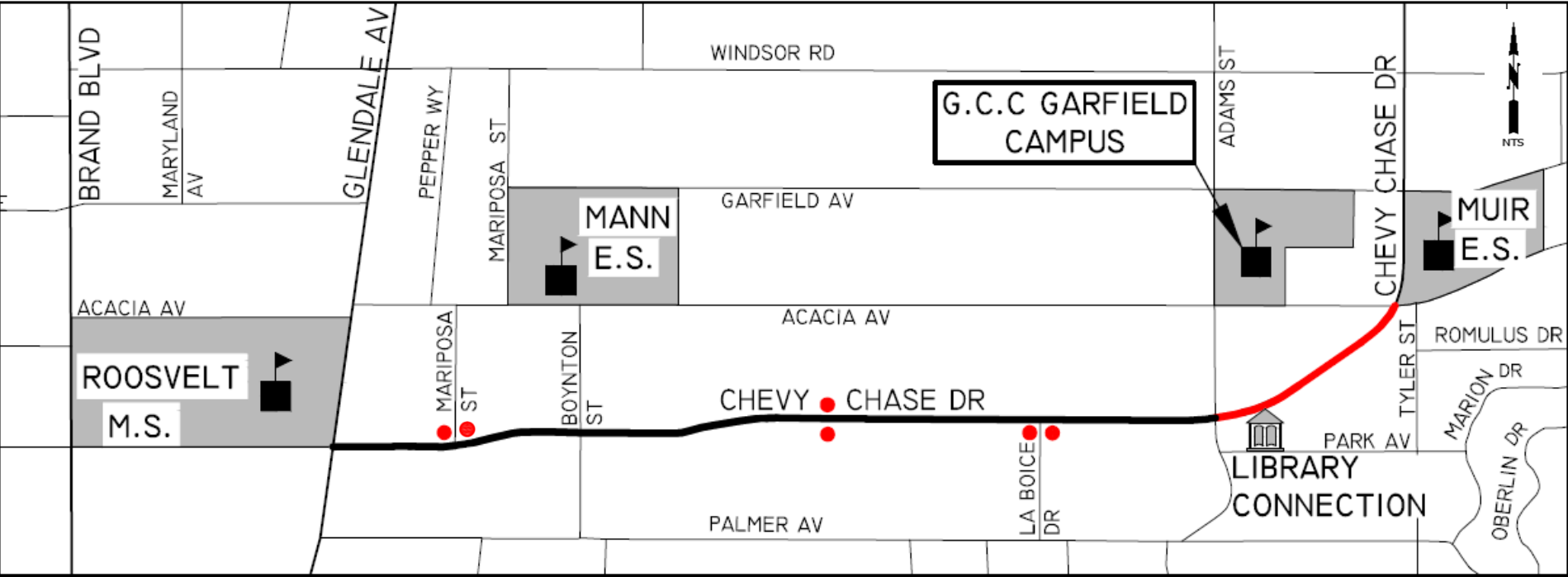
- Reduce injuries and fatalities to school children
- Improve health, reduce obesity
- Reduce traffic congestion and air pollution

# PROJECT LOCATION



LEGEND	
PROJECT LOCATION	
BULB-OUT	
SCHOOL	
LIBRARY	
M.S.	MIDDLE SCHOOL
E.S.	ELEMENTARY SCHOOL
H.S.	HIGH SCHOOL
G.C.C.	GLENDALE COMMUNITY COLLEGE

# PROJECT LOCATION



LEGEND	
PROJECT LOCATION	
BULB-OUT	
SCHOOL	
LIBRARY	
M.S.	MIDDLE SCHOOL
E.S.	ELEMENTARY SCHOOL
H.S.	HIGH SCHOOL
G.C.C.	GLENDALE COMMUNITY COLLEGE



# ANTICIPATED CONSTRUCTION SCHEDULE

Start: April 2018

End: September 26, 2018

PROJECT DURATION:

75 Working Days

(107 Calendar Days)

barring any unforeseen conditions

# SCOPE OF WORK

Installation of Traffic Calming Measures

Pedestrian & Bike Improvements Installation

Concrete Improvements

Street Pavement Rehabilitation

Tree Planting and Landscaping

Installation of Traffic Striping and Signage



# INSTALLATION OF TRAFFIC CALMING MEASURES

## BULB OUTS

- Increase Pedestrian Visibility For Driver
- Shorten Pedestrian Crossing Distance



### LEGEND

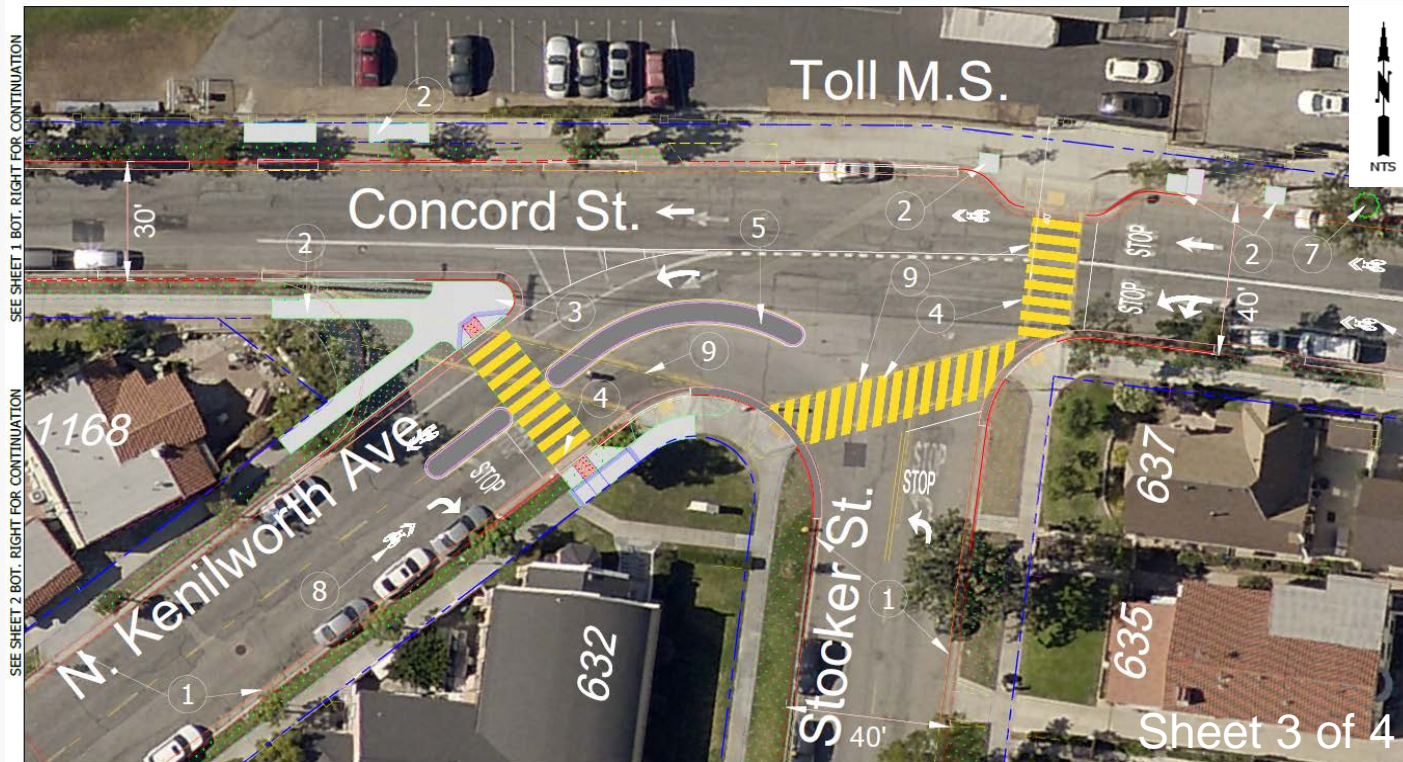
- |                           |                                   |                      |
|---------------------------|-----------------------------------|----------------------|
| ① Pavement Rehabilitation | ③ Bulb Outs W/ New ADA Curb Ramps | ⑤ Median Island      |
| ② New Sidewalk            | ④ Zebra Cross Walk                | ⑥ Existing Crosswalk |



# INSTALLATION OF TRAFFIC CALMING MEASURES

## MEDIAN ISLAND

- Enforce Turning Restrictions
- Reduce Vehicle Speed
- Reduce Risk of Vehicle Head-on Collision



SEE SHEET 1 BOT. RIGHT FOR CONTINUATION

SEE SHEET 2 BOT. RIGHT FOR CONTINUATION



Sheet 3 of 4

### LEGEND

- |                           |                                   |                      |                |                      |
|---------------------------|-----------------------------------|----------------------|----------------|----------------------|
| ① Pavement Rehabilitation | ③ Bulb Outs W/ New ADA Curb Ramps | ⑤ Median Island      | ⑦ New Trees    | ⑨ Existing Crosswalk |
| ② New Sidewalk            | ④ Zebra Cross Walk                | ⑥ New ADA Curb Ramps | ⑧ New Sharrows |                      |

# CONCRETE IMPROVEMENTS

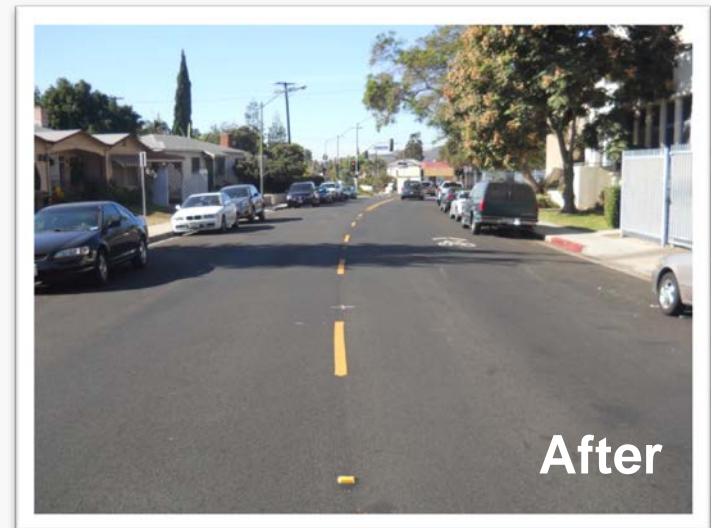
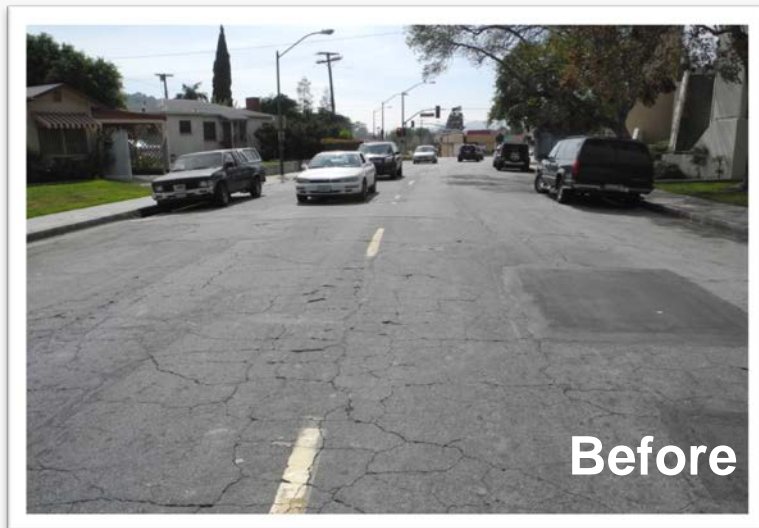
- **Modify Existing or Construct New CURB RAMPS to meet current ADA Guideline**
- **Install Visible Yellow Detectable Surface Tiles on ramps**
- **Repair Uplifted and Damaged SIDEWALKS, DRIVEWAYS, CURB and GUTTER**



# PAVEMENT REHABILITATION

## Scope of Work

- **Repair Damaged Street Pavement**
- **Full Street Pavement Reconstruction (Certain Intersections)**
- **Install Rubberized A.C. Pavement Over Leveling Coarse Pavement**
- **Rubberized Pavement Last Longer, Provides Smooth and Quite Ride**

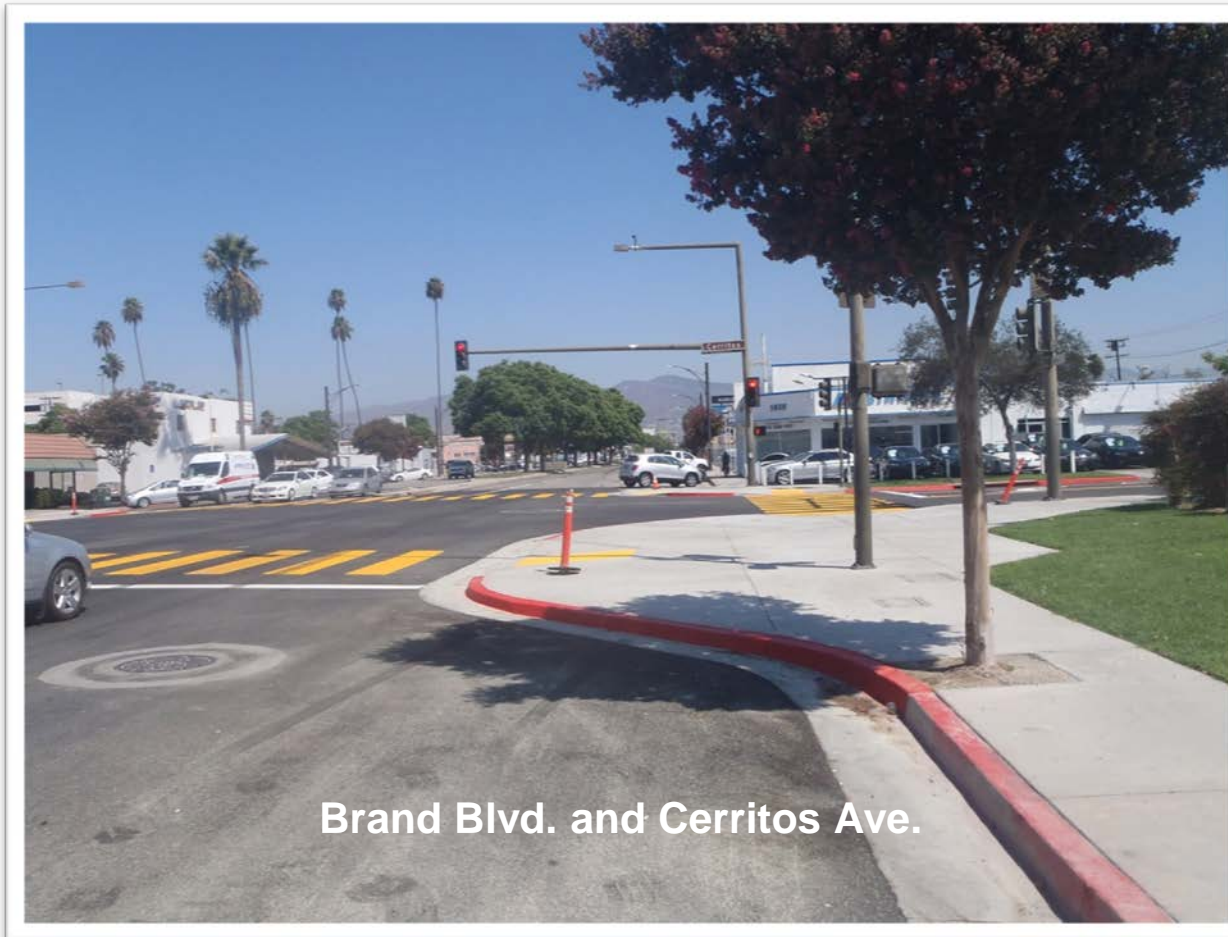




# TREE PLANTING AND PARKWAY LANDSCAPING

## Scope of Work

- Plant 30 Trees at Viable Locations
- Plant Drought Tolerant Plants at Viable Bump-Outs



Brand Blvd. and Cerritos Ave.

# INSTALLATION OF TRAFFIC STRIPING AND SIGNAGE

- **Retro-reflective Pavement Markings**
- **Shared Lane Markings (Sharrows) on Concord/Kenilworth**
- **White and Yellow High Visibility Crosswalks**
- **New Fluorescent and High Intensity Signs**



# PROJECT IMPACTS

- **Lane Closure for Workspace**
- **Complete Road Closure**
- **Traffic Delay**
- **Traffic Reroute**
- **Limited Parking or No Parking at All**
- **Limited Access**
- **Driveway Closures**
- **Noise and Dust**

# MITIGATING MEASURES

- **Public Notifications by City and Contractor**
- **Schedule Work While There is No School**
- **Work between Drop off /Pick up Hours**
- **Construction Phasing**
- **Concrete Work-One Side of Street**
- **Provide Temporary Ramps**
- **Allow Parking in Restricted Time/Areas**
- **Work on Weekends**
- **Restricted Working Hours**
- **Install Steel Plate for Access**
- **Businesses Open During Construction Signs**

**CONSTRUCTION WORK WILL BE COORDINATED TO MINIMIZE  
IMPACT TO SCHOOLS & RESIDENTS**



# Public Notification Process

Community Meeting

Director of Public Works' Letter

Contractor's Notification Letter  
(1-2 weeks prior)

Project Signs

Business Open During Construction Signs

Changeable Message Signs

3-Day Door Hanger and No-Parking Signs

Driveway Closures

Website Updates

# PROPOSED PROJECT IMPROVEMENTS EXHIBITS

# SOUTH ST. IMPROVEMENTS

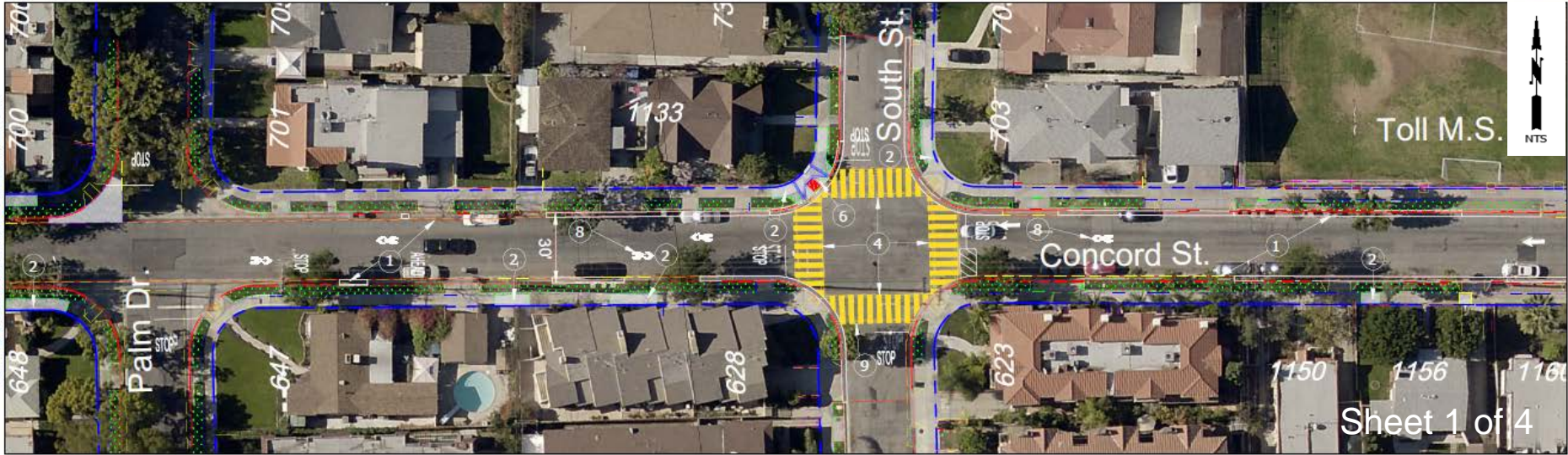


## LEGEND

- ① Pavement Rehabilitation
- ② New Sidewalk
- ③ Bulb Outs W/ New ADA Curb Ramps
- ④ Zebra Cross Walk
- ⑤ Median Island
- ⑥ Existing Crosswalk



# CONCORD ST. IMPROVEMENTS



Sheet 1 of 4

## LEGEND

- ① Pavement Rehabilitation
- ② Repair Sidewalk
- ③ Bulb Outs W/ New ADA Curb Ramps
- ④ Zebra Cross Walk
- ⑤ Median Island
- ⑥ New ADA Curb Ramps
- ⑦ New Trees
- ⑧ New Sharrows
- ⑨ Existing Crosswalk



# KENILWORTH AVE. IMPROVEMENTS



SEE BELOW LEFT FOR CONTINUATION



SEE SHEET 3 FOR CONTINUATION

Sheet 2 of 4

## LEGEND

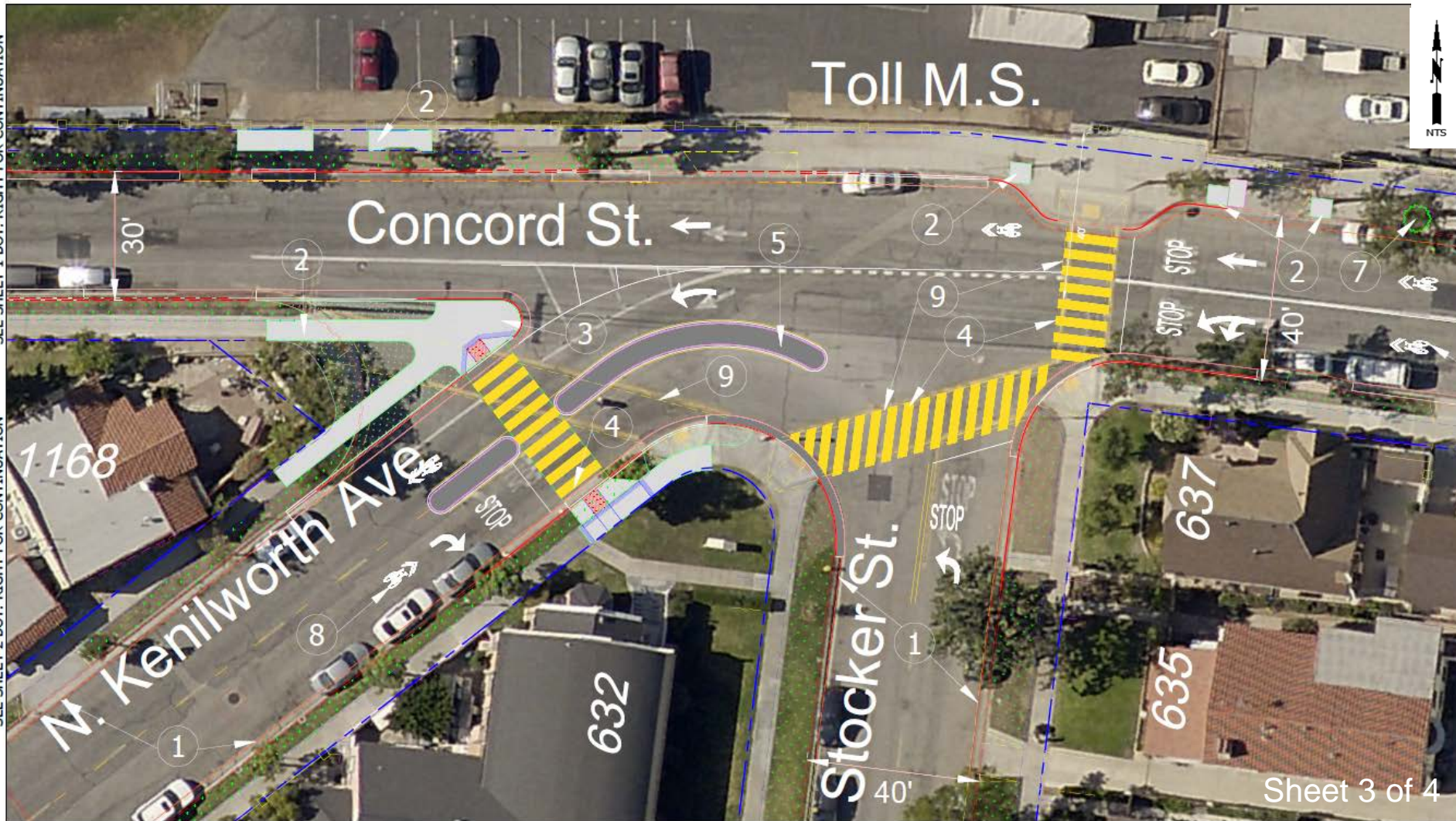
- ① Pavement Rehabilitation
- ② Repair Sidewalk
- ③ Bulb Outs W/ New ADA Curb Ramps
- ④ Zebra Cross Walk
- ⑤ Median Island
- ⑥ New ADA Curb Ramps
- ⑦ New Trees
- ⑧ New Sharrows
- ⑨ Existing Crosswalk



# MEDIAN ISLAND INSTALLATION

SEE SHEET 1 BOT. RIGHT FOR CONTINUATION

SEE SHEET 2 BOT. RIGHT FOR CONTINUATION



Sheet 3 of 4

## LEGEND

- |                           |                                   |                      |                |                      |
|---------------------------|-----------------------------------|----------------------|----------------|----------------------|
| ① Pavement Rehabilitation | ③ Bulb Outs W/ New ADA Curb Ramps | ⑤ Median Island      | ⑦ New Trees    | ⑨ Existing Crosswalk |
| ② Repair Sidewalk         | ④ Zebra Cross Walk                | ⑥ New ADA Curb Ramps | ⑧ New Sharrows |                      |



# CHEVY CHASE DR – MARIPOSA ST. IMPROVEMENTS



## LEGEND

- ① Median Island/Only Striping
- ② Repair Sidewalk
- ③ Bulb Outs W/ New ADA Curb Ramps
- ④ Zebra Cross Walk
- ⑤ New Sharrows



# CHEVY CHASE DR. BUS STOP AND CROSSWALK IMPROVEMENTS



## LEGEND

- ① Median Island/Only Striping
- ② Repair Sidewalk
- ③ Bulb Outs W/ New ADA Curb Ramps
- ④ Zebra Cross Walk
- ⑤ New Sharrows



# CHEVY CHASE DR. AND LA BOICE DR. IMPROVEMENTS



## LEGEND

- ① Median Island/Only Striping
- ② Repair Sidewalk
- ③ Bulb Outs W/ New ADA Curb Ramps
- ④ Zebra Cross Walk
- ⑤ New Sharrows



# CHEVY CHASE DR. MEDIAN ISLAND INSTALLATION



Sheet 4 of 4

## LEGEND

- ① Median Island
- ② New Sidewalk
- ③ Bulb Outs W/ New ADA Curb Ramps
- ④ Zebra Cross Walk
- ⑤ New Sharrows

# SAFE ROUTES TO SCHOOL IMPROVEMENTS PROJECT HOOVER-KEPPEL –TOLL SCHOOLS AND E. CHEVY CHASE DRIVE

# :::THANK YOU:::

For questions or general information, please contact:

**Jasmina Zigic, P.E.**

Project Manager

(818) 548-3945

**Yvonne Guerra**

Community Outreach

(818) 548-3945

This PowerPoint presentation will be available for viewing at :

<http://www.glendaleca.gov/government/departments/public-works/projects/upcoming/safe-routes-to-school-improvements-project-hoover-keppel-toll-schools-and-e-chevy-chase-drive>

The project-dedicated webpage includes project updates and other information.



#MyGlendale  
@MyGlendale