



Cerritos Elementary School Multi-purpose Field Project

Project Information Meeting

Cerritos Elementary School
120 E. Cerritos Ave.
Glendale, Ca 91205

Monday, October 15, 2018
6:30 P.M.

Introductions

City of Glendale
*Community
Services & Parks*

Peter Vierheilig
Onnig Bulanikian
Teresa Aleksanian
Koko Panossian

Glendale USD

Stephen Dickinson
Perla Chavez-Fritz
Kent Smith

PlaceWorks

Julian Capata

Agenda

1. Purpose of the Meeting
2. Project Background and Purpose
3. Project Overview
4. California Environmental Quality Act (CEQA) Overview
5. Opportunities for Public Participation
6. Solicit Public Comments

Purpose of the Meeting

- Provide information about the project
- Provide an opportunity for public input
- Provide details regarding:
 - Topics of analysis
 - Mitigation measures
 - Studies prepared

Project Background

- Council approved **DIF Strategic Plan** on Mar. 29, 2016 - **\$16 Million**
- Includes 2 multi-purpose fields in partnership with GUSD
- Glendale has a **high demand for multipurpose fields for youth activities**

Project Purpose

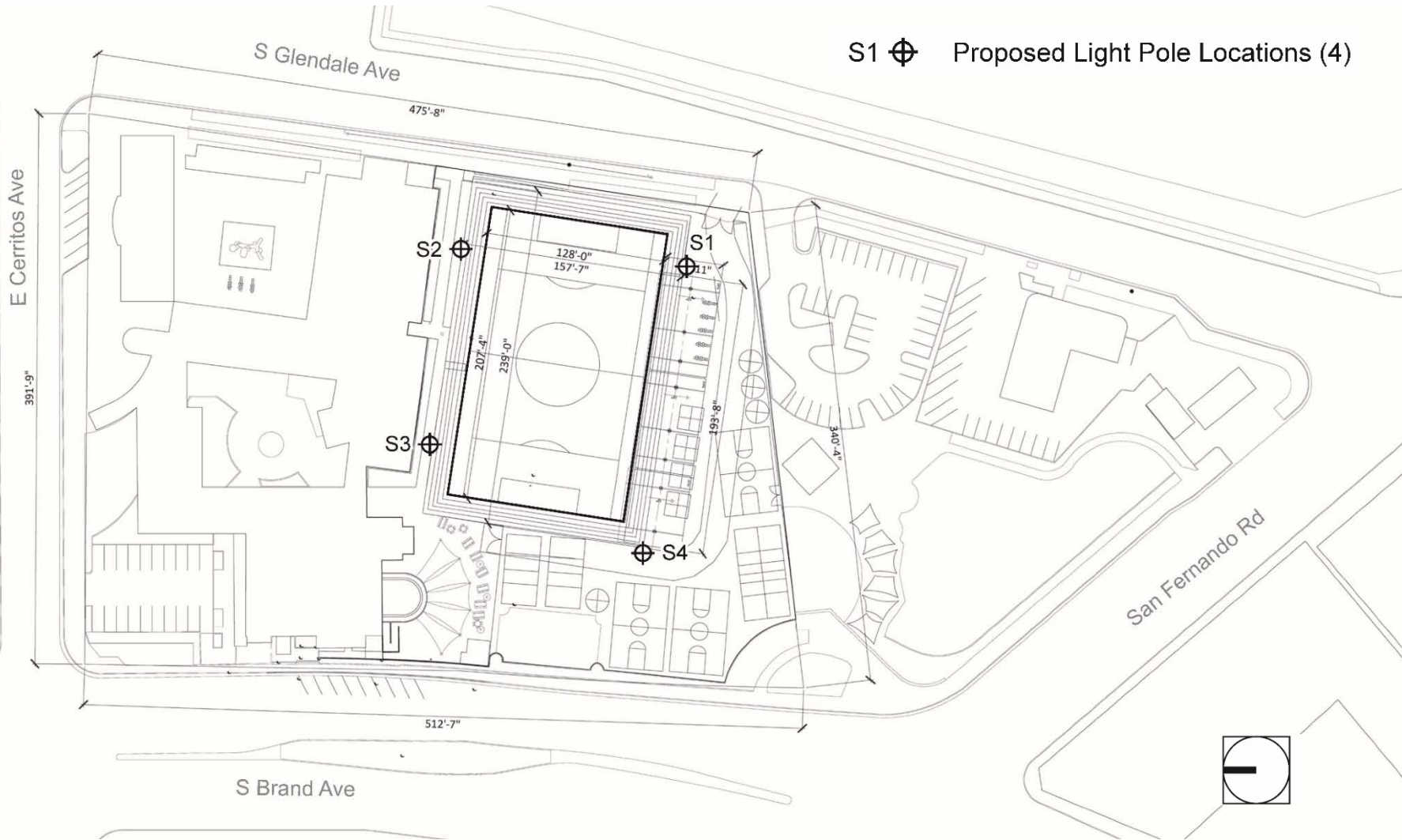
- 1. Provide a recreational multi-purpose athletic field** for City of Glendale residents.
- 2. Utilize existing space** for joint use recreational activities, due to limited public space.
- 3. Respond to City of Glendale residents' request** for youth athletic playing fields.
- 4. Conserve water resources** by replacing natural turf field with no water/non-living artificial turf field.

Project Overview

Project Features

- Multi-Purpose Synthetic Turf Field
- Sports Field Lighting
- Synthetic Jogging Track
- Regrading / Restriping of Existing Sport Courts
- Perimeter Fence
- Restroom / Maintenance Building at Cerritos Park

Site Plan



Project Joint – Tentative Use

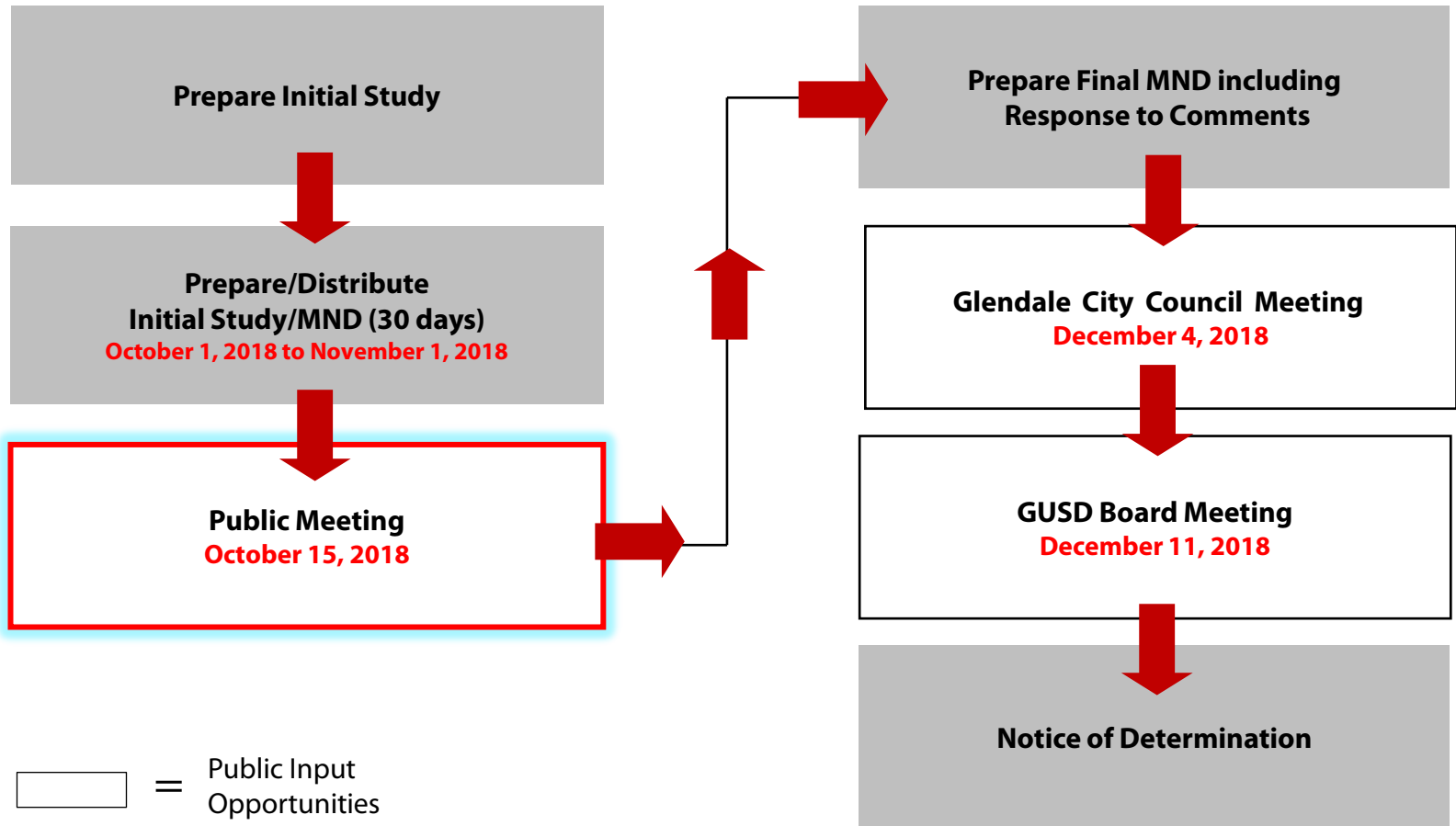
Monday – Friday	Saturday – Sunday & Holidays
<p>Open – 6pm Cerritos Elementary School use</p>	<p>8am – 10pm Youth Groups & Private Reservations</p>
<p>6pm – 10pm Youth Groups & Private Reservations</p>	
<p>Track available to community during these times</p>	
<p><i>Community Services & Parks Department employee on site all community use times</i></p>	

California Environmental Quality Act (CEQA)

Purposes of California Environmental Quality Act (CEQA)

- All projects within the State of California are required to undergo environmental review to determine the environmental impacts associated with implementation of the project
- Informs the public and decision makers about the project and about the potential environmental impacts
- Identifies feasible ways to avoid or reduce potential impacts
- Discloses why decisions were made
- Provides an opportunity for the public and local/state agencies to comment on the environmental issues

Overview of the MND Process



Initial Study Topics

- Aesthetics
- Air Quality
- Agriculture & Forestry Resources
- Biological Resources
- Cultural Resources
- Geology and Soils
- Greenhouse Gas Emissions
- Hazards & Hazardous Materials
- Hydrology & Water Quality
- Land Use and Planning
- Mineral Resources
- Noise
- Population & Housing
- Public Services
- Transportation, Traffic & Parking
- Tribal Cultural Resources
- Utilities & Service Systems

Types of Impacts Identified in Initial Study

- **No Impact:** A designation of “No Impact” is given when no adverse changes in the environment are expected
- **Less-than-Significant:** A “Less-than-Significant Impact” would cause no substantial adverse change in the environment
- **Less-than-Significant with Mitigation:** A “Potentially Significant Impact” has been reduced to “Less-than-Significant” *with* the application of mitigation measures identified in the Initial Study

Initial Study Findings: **No Impacts**

The Project will have a “No Impact” on:

- Agricultural and Forestry Resources
- Biological Resources
- Land Use and Planning
- Mineral Resources
- Population and Housing
- Recreation
- Public Services
 - Schools, Parks, and Other Facilities

Initial Study Findings: **Less-than-Significant Impacts**

The Project will have a “Less-than-Significant Impact” on:

- Aesthetics
- Air Quality
- Biological Resources
- Geology and Soils
- Greenhouse Gas Emissions
- Hydrology and Water Quality
- Noise
- Utilities and Service Systems
- Public Services
- Fire Protection and Police Protection
- Transportation/Traffic

Initial Study Findings: **Less Than Significant Impact with Mitigation Incorporated**

The Project will have a “Less Than Significant Impact with Mitigation Incorporated” on:

- Cultural Resources
- Tribal Cultural Resources
- Hazards and Hazardous Materials

Mitigation Measures

Cultural Resources & Tribal Cultural Resources

- Impacts to Cultural Resources and Tribal Cultural Resources trigger the same mitigation measures.
- Ongoing monitoring for potential undiscovered archaeological, paleontological, or tribal artifacts
 - Work will cease if artifacts are uncovered and City must be notified
 - Relevant archaeologist or paleontologist will be called in to examine any finds
 - Tribal Cultural finds trigger outreach to Native American Heritage Commission

Mitigation Measures

Hazards and Hazardous Materials

- Construction may expose work crews to unidentified hazardous substances
- If hazards or hazardous materials are discovered, work will cease
 - Licensed environmental team to perform soil testing
 - Follow all regulatory requirements

Studies Prepared

- Lighting Level/Photometric Study
- Air Quality Study
- Greenhouse Gas Emissions Study
- Traffic and Parking Impact Study

Comparative Light Levels

<i>Outdoor Light</i>	<i>Foot-candle</i>
Direct Sunlight	10,000
Full Daylight	1,000
Overcast Day	100
Dusk	10
Twilight	1
Deep Twilight	0.1
Full Moon	0.01
Quarter Moon	0.001
Moonless Night	0.0001
Overcast Night	0.00001
Gas station canopies	25–30
Typical neighborhood streetlight	1.0–5.0

Source: Musco Lighting 2012; The Engineering ToolBox 2013.





Lighting Levels of Off-Site Location

Cerritos Elementary School Glendale, CA

GLARE IMPACT

Summary

Map indicates the maximum candela an observer would see when facing the brightest light source from any direction.

A well-designed lighting system controls light to provide maximum useful on-field illumination with minimal destructive off-site glare.

GLARE

Candela Levels

High Glare: 150,000 or more candela

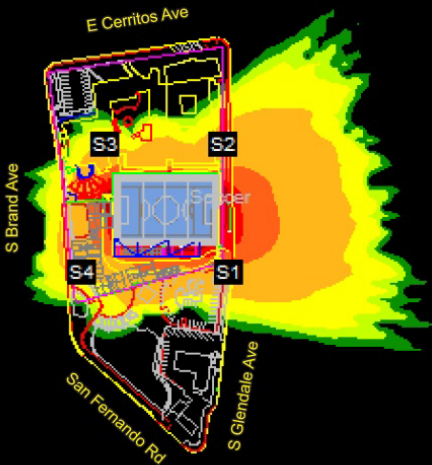
Should only occur on or very near the lit area where the light source is in direct view. Care must be taken to minimize high glare zones.

Significant Glare: 25,000 to 75,000 candela

Equivalent to high beam headlights of a car.

Minimal to No Glare: 500 or less candela

Equivalent to 100W incandescent light bulb.



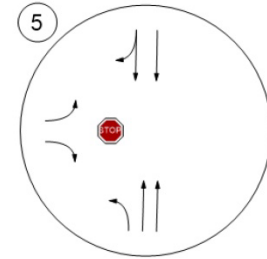
S1 Proposed Light Pole Locations (4)



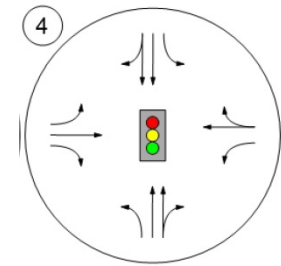
Traffic: Study Intersections



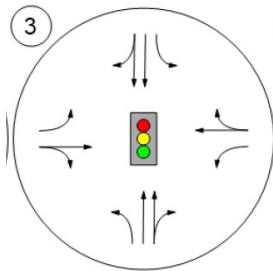
Glendale Avenue at Cerritos Avenue



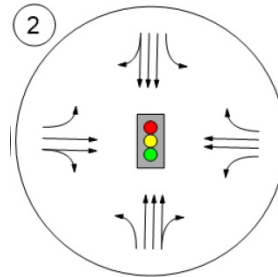
Brand Avenue at Cerritos Avenue



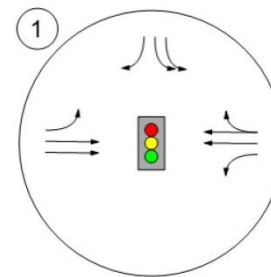
San Fernando Road at Cerritos Avenue







Brand Boulevard at San Fernando Road



Glendale Avenue at San Fernando Road

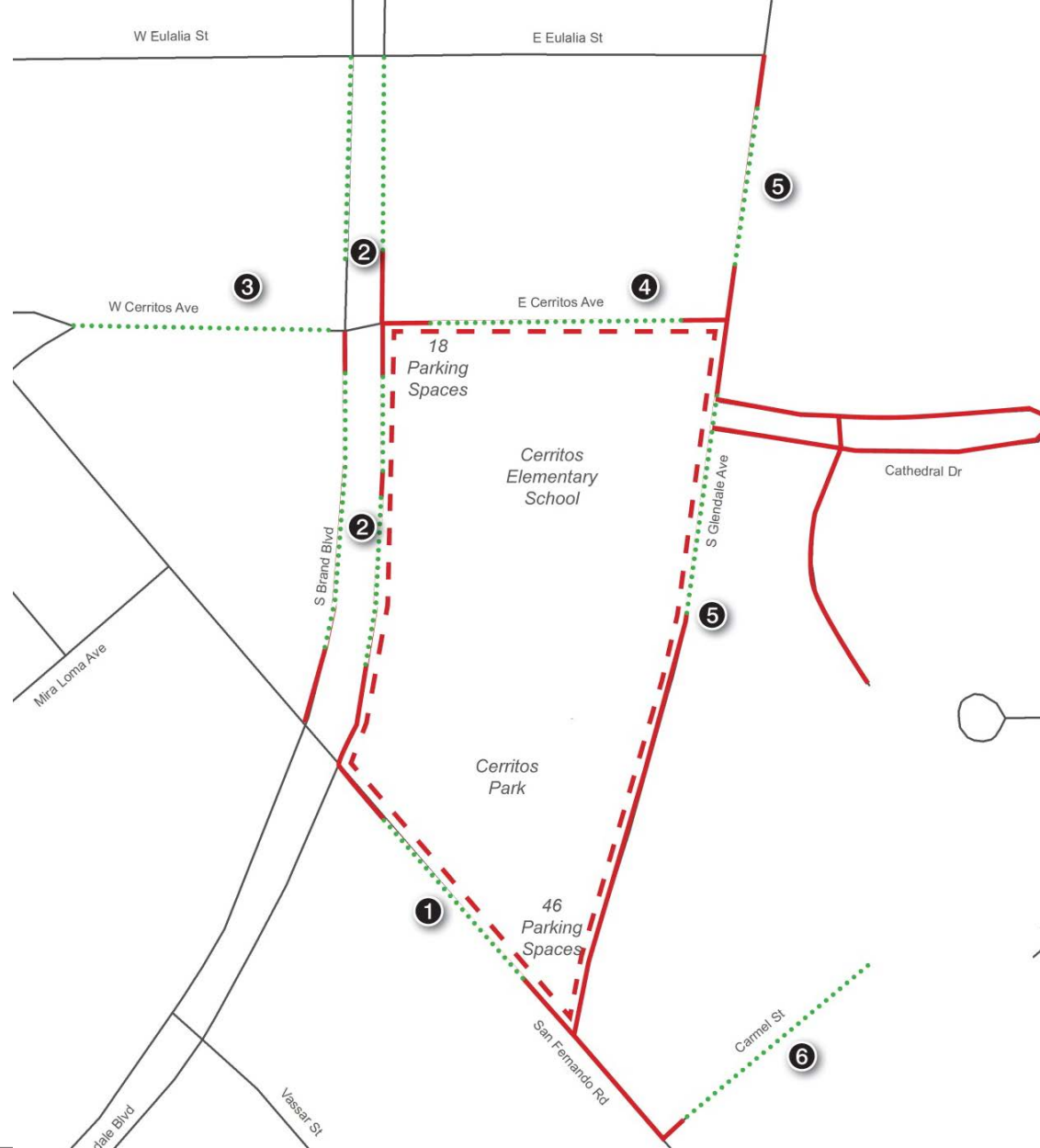


Off-site Parking Locations

-  No Parking Allowed
-  Parking Count Locations
-  On-Site Parking Boundary
-  Segment Number

Source: FSRI, 2017

0  250
Scale (Feet)



Traffic

- Determine Existing Traffic Volumes
- Add Traffic from Cumulative Developments
- Estimate Traffic from Project
 - Maximum Project Traffic
 - 2 youth games
 - 40 peak hour weekday trips
 - 78 peak hour weekend trips
- Maximum Capacity Event does not cause substantial delay at any intersection

Parking

Location	Weekday	Weekend
Cerritos Elementary School Lot	49	55
Adjacent Off-street Parking	91	54
Total Supply	140	109
Parking Demand for Capacity Event	77	108



Parking supply would meet project demand

Opportunities for Public Participation & Input

Opportunities for Public Participation

- **Public Review**

- Review period began on October 1, 2018 and ends on November 1, 2018
- Documents available for review on the Community Services & Parks Department's website at <http://ww.glendaleca.gov/parks>
- At City of Glendale Community Services & Parks Department at 613 E. Broadway Rm. 120, Glendale, CA 91206
- At Cerritos Elementary School, 120 E Cerritos Ave, Glendale, CA 91205
- Spanish and Armenian documentation available online at <http://ww.glendaleca.gov/parks>

Opportunities for Public Participation

- **Draft MND**

- Currently circulating for 30-day review
- Documents available for review on the Community Services & Parks Department's website
- At City of Glendale Community Services & Parks Department office, at Cerritos Elementary School

- **Final MND**

- Will include all comments and Parks Department's responses
- Findings

- **City Council**

- Anticipate project approval and MND adoption at the December 4, 2018 Glendale City Council meeting

- **GUSD Board Meeting**

- December 11 to approve project and adopt MND

Request for Input

Focus on Environmental Issues you believe should be addressed in MND

Comments may be submitted to the City at:

Mail: **Peter Vierheilig, Project Manager**
City of Glendale, Community Services & Parks Department
613 E. Broadway, Room 120
Glendale, CA 91206

Email: Pvierheilig@Glendaleca.gov

Heading: Cerritos Elementary School Multi-Purpose Project

Submit in writing no later than **5:00 PM November 1, 2018**



Questions & Comments