



Highland Avenue Rehabilitation Project

Community Meeting

Highland Avenue Rehabilitation Project

ANTICIPATED

CONSTRUCTION START DATE:

August 2019

ANTICIPATED

CONSTRUCTION END DATE:

November 2019

barring any unforeseen conditions

MEETING AGENDA

Project Purpose and Locations

Construction Phasing

Major Improvement Details

Project Impacts and Mitigation

Public Notification

Questions / Comments

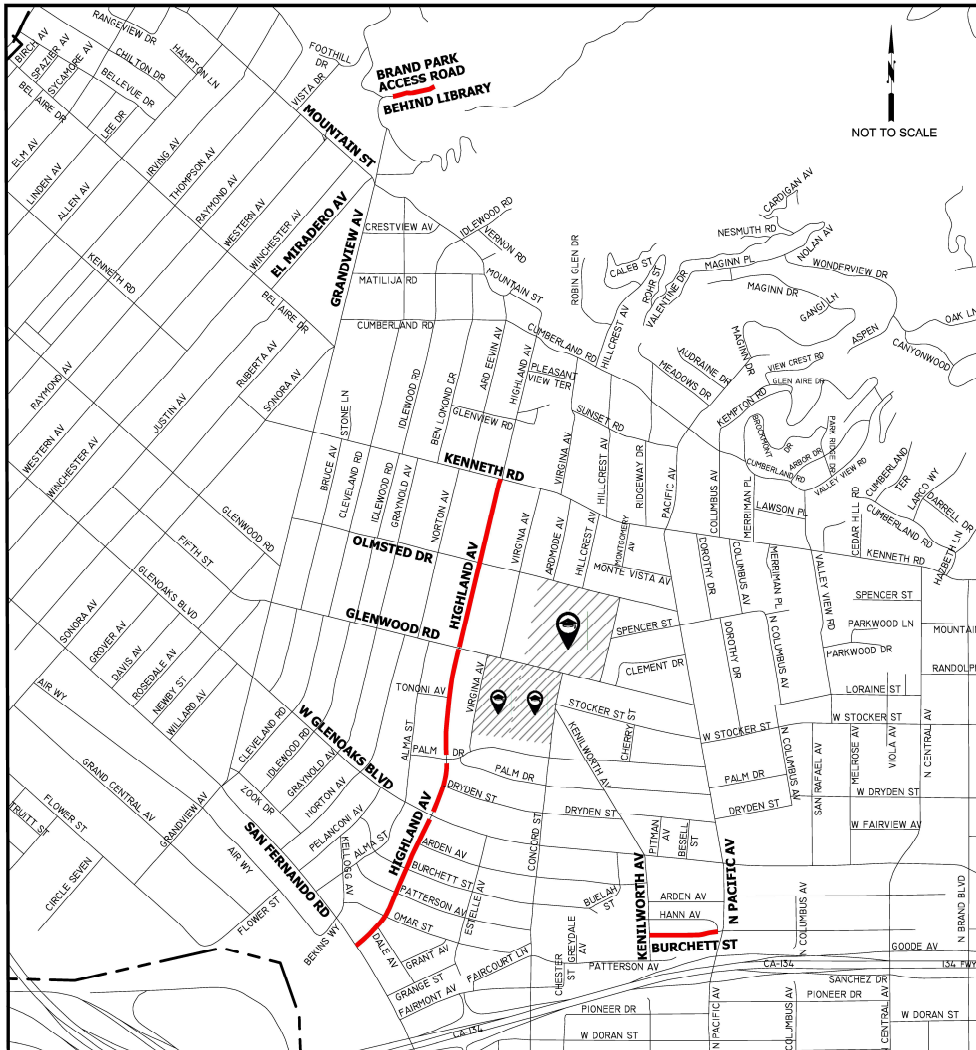


Project Purpose


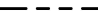

- Rehabilitate deteriorated street pavement
- Construct new or replace damaged sidewalks, driveways, curb and gutters, alley aprons, and cross gutters
- Comply with Americans with Disabilities Act
- Implement traffic improvements
- Relocate decorative street lights, water meters, and fire hydrants
- Make selective sewer improvements
- Install a drywell system and catch basin
- Remove and plant trees



Project Location



LEGEND

-  Street Improvements
-  City Limits
-  Schools



Resourceful Facts

- R&R – Remove and Reconstruct
- AC – Asphalt Concrete
- ARAM – Asphalt Rubber Aggregate Membrane
- ARHM – Asphalt Rubber Hot Mix
- GWP – Glendale Water and Power



Construction Phasing

- Phase 1: Concrete Work
- Phase 2: Asphalt Concrete Removal and Replacement
- Phase 3: Street Resurfacing
- Phase 4: Installation of Traffic Striping, Signing, and Pavement Markings



Concrete Work

- Sidewalks
- Curb Ramps
- Driveway Aprons
- Alley Aprons
- Curb and Gutters
- Cross Gutters



AC R&R

- Base Failure
- Erosion
- Potholes
- Tree Roots



Resurfacing

Method used to improve the ride of the street and structural integrity of the pavement

- Grind 2"-3" of existing AC pavement
- Place AC leveling course (Highland Avenue) OR
- Place ARAM (Burchett Street)
- Place ARHM Top Coat
- Approximately one week process
- Begins NEW service life for pavement
- Prevents Excessive AC Pavement R&R
- Irrigation should be turned off
- Parking and access to street will be restricted during applications



Resurfacing



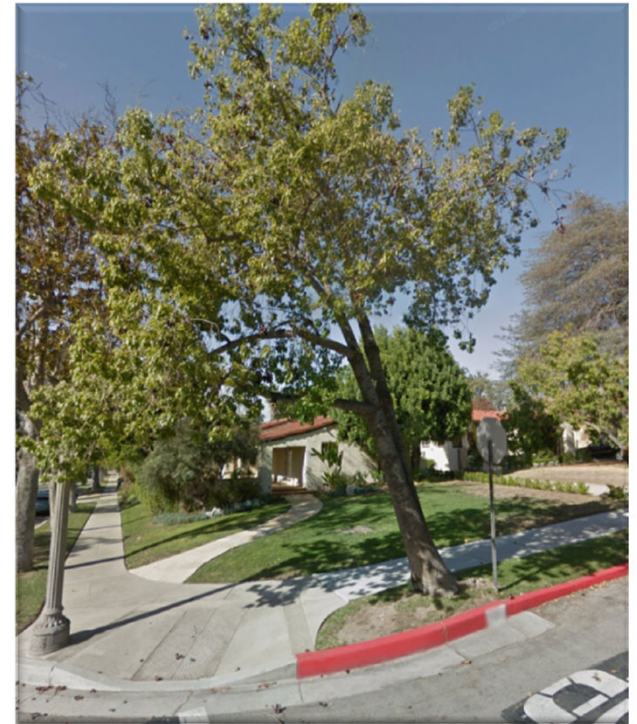
Traffic Striping

- Applied after all AC work is complete
- New “zebra crosswalks” at intersections of Highland and San Fernando and Highland and Glenwood.



Tree Removal and Planting

- Tree removal, replacement, and planting of new trees per professional arborist's recommendation
- Removal likely prior to start of construction and ONLY for trees posing risks
- Residents will be notified in advance
- Free Shade Tree program
(818-957-4425)



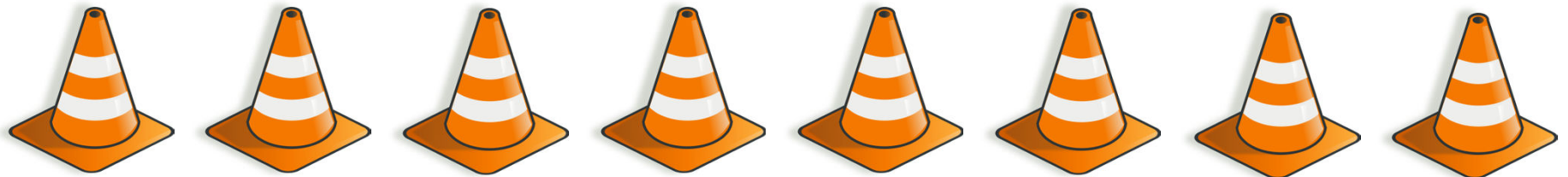
Street Light, Water Meter, and Fire Hydrant Relocations

- Relocations will be within the vicinity
- Relocations will likely take place before start of project construction
- Residents will be notified in advance by GWP



Project Impacts

- Streets may be temporarily closed during construction
- Contractor will notify residents in advance
- Street parking will be prohibited in work areas
- Construction may be allowed on Saturdays if necessary
- Construction equipment and materials may be stored on the street

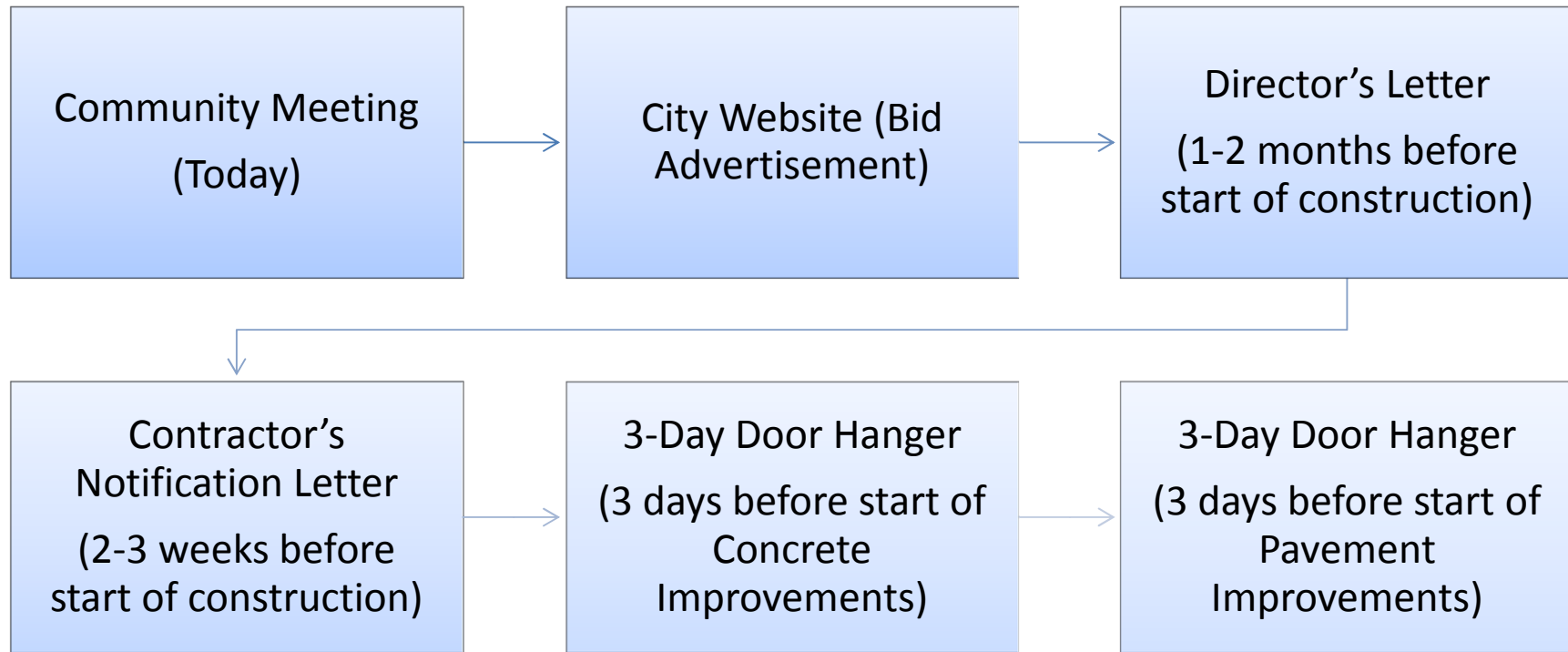


Project Mitigation

- Road open and parking available during non-working hours
- Provide alternate traffic routes and maintain access to driveways as much as possible
- Street closure limited to immediate work zone
- Curbs, gutters, sidewalks, and driveways will be constructed on one side of the street at a time
- Provide flaggers for traffic control where required



Public Notification



Questions?



Contacts

Viktoriya Pakhanyan, PE
Project Manager
(818) 937-8254

Yvonne Guerra
Public Outreach
(818) 548-3986

www.GlendalePWprojects.com





#MyGlendale

