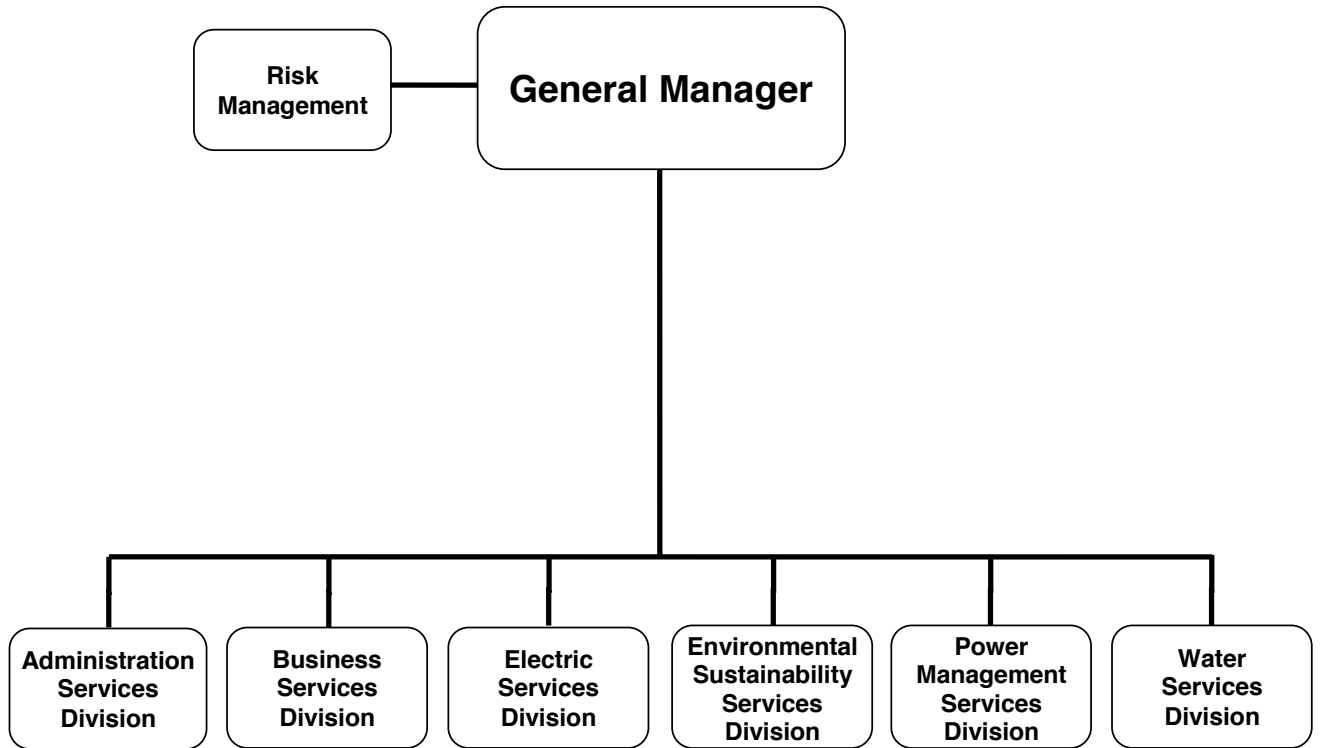


ADOPTED BUDGET

FY 2019-2020

GLENDALE WATER
& POWER

GLENDALE WATER & POWER



CITY OF GLENDALE

GLENDALE WATER & POWER

MISSION STATEMENT

Glendale Water & Power's (GWP) mission is to cost effectively provide its customers with safe, efficient, reliable and sustainable water and power services. This mission is accomplished through the prudent use of resources, technology, innovation, teamwork and planning to ensure sufficient supply for today and into the future.

DEPARTMENT DESCRIPTION

GWP consists of six divisions:

- Administrative Services Division
- Business Services Division
- Electric Services Division
- Environmental Sustainability Services Division
- Power Management Services Division
- Water Services Division

The focus of these divisions is to ensure that the City is served well today, and is poised to meet future challenges. The key components in Glendale Water & Power's operation include:

Electric Services – Provide safe, reliable and efficient electric service by maintaining and making continuous improvements in the power delivery system.

Power Management Services – Ensure reliable power supply under severe legislative regulatory controls and restrictions through a portfolio of resources.

Water Services - Provide safe and reliable water services that meet or exceed regulatory water quality requirements while optimizing the local production of water resources including water recycling, while efficiently pumping and storing water to minimize energy use.

Customer Service - Achieve high customer satisfaction levels by increasing the value of the programs and services GWP offers and working to continuously provide information to customers on how they can make informed decisions on water and energy use.

Rates - Achieve water and electric rates that will support the infrastructure needs and are appropriate for the level of service provided.

Infrastructure - Assure high service reliability by continuously improving and maintaining the GWP physical plant, electric and water facilities.

Work Force – Through succession planning, develop, retain and promote a safe, highly skilled, dedicated, and customer-focused work force.

Utility Modernization – Continuously develop and improve programs, systems and technologies to reduce GWP's costs while enhancing customer communications and increasing operational effectiveness.

Legislation & Regulation – Monitor, participate, and influence local, state, and federal legislation and regulations to provide the most benefit to Glendale Water & Power's customers.

Safety – Provide a safe environment for our staff and the community.

CITY OF GLENDALE

GLENDALE WATER & POWER

RELATIONSHIP TO CITY COUNCIL PRIORITIES

Exceptional Customer Service

Glendale Water & Power is committed to providing its residents with extraordinary customer service centered on the principles of integrity, quality, and customer satisfaction through the reliable and efficient delivery of energy and water services to every customer served. This includes ensuring minimal service disruptions to the extent possible, establishing reasonable utility rates, providing reliable resources and responding to customer inquiries in a prompt and professional manner.

Environmental Sustainability

Glendale Water and Power is constantly looking for ways to minimize environmental impacts and promote sustainable water and power resources. GWP's Water Division is committed to using more local sources of water and reducing the amount of imported water in its portfolio. The Water Division has been a pioneer in the use of recycled water since 1978 -one of the first in California. As part of our electrification efforts, GWP has installed numerous public EV chargers throughout Glendale. GWP plans to expand Glendale's EV infrastructure in the near future with even more public chargers. Also, GWP has been utilizing the City's landfill gas as a renewable energy source for over 20 years, which has resulted in the added benefit of creating fewer greenhouse gas emissions from the landfill.

Economic Vibrancy

Glendale Water & Power is committed to providing its customers with reliable and sustainable water and power services that are cost effective and innovative. This year GWP launched a new marketplace for customers to purchase discounted energy efficiency/water conservation merchandise and smart home energy devices. Customers can browse through and purchase a variety of products that will help them save money and use water and energy wisely.

Informed & Engaged Community

Glendale Water & Power pro-actively shares information and engages the community regarding important issues via multiple communication platforms. This year, GWP hosted its first ever Tailgate event where guests had the opportunity to visit GWP Department and Program booths to learn about and sign-up for customer programs and services. GWP also held the 6th Annual Utility Day with tours of our plant and facilities, as well as electric and water displays. Through these types of events, GWP continues to educate customers and provide them with tools and information about our reliable, sustainable and innovative services.

Infrastructure & Mobility

GWP strives to continue providing reliable services by:

- Implementation of the 10 Year Water Capital Improvement Program in a manner consistent with long term Water Master Plan to upgrade aging infrastructure while reflecting the ongoing financial, environmental and organizational challenges that utilities continue to face.
- Delivering and serving water that meets all federal, state and local drinking water standards.
- Developing an Electric System Master Plan by conducting a system-wide inspections of all transmission and distribution assets, and provide guidelines for planning Capital Improvement projects for future system upgrades and modifications.

**CITY OF GLENDALE
SUMMARY OF APPROPRIATIONS
GLENDALE WATER & POWER DEPARTMENT
FOR THE YEARS ENDING JUNE 30**

	Actual 2017-18	Adopted 2018-19	Revised 2018-19	Adopted 2019-20
Electric Public Benefit Fund				
Electric Public Benefit Fund (2910)	\$ 5,950,846	\$ 9,243,196	\$ 9,243,196	\$ 9,016,367
Total Electric Public Benefits Fund	\$ 5,950,846	\$ 9,243,196	\$ 9,243,196	\$ 9,016,367
Fiber Optic Fund				
Fiber Optic Fund (5400)	\$ -	\$ -	\$ -	\$ 220,313
Total Fiber Optic Fund	\$ -	\$ -	\$ -	\$ 220,313
<u>Electric Utility</u>				
Electric Surplus Fund-Administration (5810)	\$ 20,161,719	\$ -	\$ -	\$ -
Electric Works Revenue Fund				
Administration (5820-4505)	\$ 46,661,352	\$ 69,073,982	\$ 69,073,982	\$ 66,579,334
Customer Service (5820-4509)	6,187,191	7,487,301	7,487,301	7,988,068
Consrv & Utility Mod (5820-4520)	2,337,876	4,083,422	4,083,422	1,011,459
Business System Suport (5820-4521)	-	-	-	3,209,904
Utility Finance (5820-4530)	241,579	328,916	328,916	606,163
Environmntl & Safety (5820-4540)	634,863	861,499	861,499	939,453
UOC & Warehouse (5820-4550)	1,094,310	1,065,896	1,065,896	1,403,618
Yard (5820-4560)	163,574	223,952	223,952	197,900
Engineering (5820-4600)	3,711,837	4,834,177	4,445,224	4,261,908
Customer Support (5820-4610)	814,999	1,016,162	1,016,162	1,138,248
Street Light (5820-4620)	1,085,886	553,642	553,642	593,071
Howard Substation (5820-4630)	2,149,609	2,818,742	2,818,742	2,646,570
Meter & Test Shop (5820-4640)	1,857,905	1,563,713	1,563,713	1,792,378
Station Maint (5820-4650)	3,466,325	3,702,081	3,702,081	3,993,284
Overhead & Underground (5820-4660)	6,796,125	7,233,073	7,622,026	9,620,449
Substructure (5820-4670)	601,621	828,661	828,661	859,258
Power Management (5820-4680)	88,686,475	124,732,260	124,732,260	147,807,938
Power Plant (5820-4690)	11,468,905	13,097,428	13,097,428	13,284,671
Total Electric Works Revenue Fund	\$ 177,960,431	\$ 243,504,907	\$ 243,504,907	\$ 267,933,674
Electric Depreciation Fund-Projects (5830)	\$ -	\$ 12,783,938	\$ 13,419,558	\$ 21,086,300
Electric Customer Paid Capital Fund (5850)	-	2,000,000	2,000,000	2,000,000
Energy Cost Adjustment Charge Fund (5860)	4,299,575	-	-	-
Regulatory Adjustment Charge Fund (5870)	8,029,522	-	-	-
Electric Customer Repair Fund (5880)	-	50,000	50,000	50,000
Total Electric Utility	\$ 210,451,247	\$ 258,338,845	\$ 258,974,465	\$ 291,069,974

**CITY OF GLENDALE
SUMMARY OF APPROPRIATIONS
GLENDALE WATER & POWER DEPARTMENT
FOR THE YEARS ENDING JUNE 30**

	Actual 2017-18	Adopted 2018-19	Revised 2018-19	Adopted 2019-20
<u>Water Utility</u>				
Water Works Revenue Fund				
Administration (5920-4505)	\$ 16,008,930	\$ 16,275,417	\$ 16,275,417	\$ 17,139,161
Customer Service (5920-4509)	1,819,374	2,333,935	2,333,935	2,494,304
Consrv & Utility Mod (5920-4520)	666,311	1,273,894	1,273,894	450,107
Business System Suport (5920-4521)	-	-	-	831,341
Utility Finance (5920-4530)	65,400	92,776	92,776	170,590
Environmental & Safety (5920-4540)	151,764	252,256	252,256	235,556
UOC & Warehouse (5920-4550)	304,894	338,121	338,121	395,777
Yard (5920-4560)	63,571	63,212	63,212	55,846
Engineering (5920-4700)	19,624,190	22,138,414	22,138,414	25,953,046
Water Distribution (5920-4710)	3,037,567	3,835,010	3,835,010	3,761,882
Operation (5920-4720)	5,865,244	6,569,112	6,569,112	3,080,118
Water Quality (5920-4730)	1,244,074	1,908,269	1,908,269	1,895,057
Total Water Works Revenue Fund	\$ 48,851,319	\$ 55,080,416	\$ 55,080,416	\$ 56,462,785
Water Depreciation Fund (5930)	\$ -	\$ 8,602,062	\$ 8,752,062	\$ 11,834,800
Water Customer Paid Capital Fund (5950)	-	1,471,000	1,471,000	1,500,000
Water Customer Repair Fund (5980)	41,076	100,000	100,000	100,000
Total Water Utility	\$ 48,892,395	\$ 65,253,478	\$ 65,403,478	\$ 69,897,585
Department Grand Total	\$ 265,294,488	\$ 332,835,519	\$ 333,621,139	\$ 370,204,239

**CITY OF GLENDALE
GLENDALE WATER & POWER DEPARTMENT
ELECTRIC PUBLIC BENEFIT FUND (2910)**

		Actual 2017-18	Adopted 2018-19	Revised 2018-19	Adopted 2019-20
Salaries & Benefits					
41100	Salaries	\$ 403,159	\$ 429,311	\$ 429,311	\$ 283,654
41200	Overtime	4,788	10,150	10,150	10,150
41300	Hourly wages	99,273	74,420	74,420	72,845
Various	Benefits	122,994	120,964	120,964	88,559
42700	PERS retirement	117,141	148,801	148,801	119,652
42701	PERS cost sharing	(17,890)	(20,034)	(20,034)	(14,075)
Salaries & Benefits Total		\$ 729,465	\$ 763,612	\$ 763,612	\$ 560,785
Maintenance & Operation					
43110	Contractual services	\$ 1,507,230	\$ 3,824,000	\$ 3,824,000	\$ 3,824,000
44450	Postage	2,647	5,000	5,000	5,000
44550	Travel	2,538	3,300	3,300	3,300
44650	Training	681	1,500	1,500	1,500
45250	Office supplies	-	2,000	2,000	2,000
45512	Public benefit programs	3,296,660	4,214,000	4,214,000	4,214,000
45680	Uncollectible accounts	2,500	-	-	-
45681	Business meetings	-	1,000	1,000	1,000
45682	Miscellaneous	285	15,000	15,000	15,000
46007	Cost allocation charge	97,604	95,181	95,181	87,172
46009	ISD service charge	32,291	35,929	35,929	32,629
46010	Building maint service charge	37,790	37,359	37,359	27,030
46011	Liability Insurance	13,778	17,937	17,937	15,573
46013	GWP Municipal Billing	227,378	227,378	227,378	227,378
Maintenance & Operation Total		\$ 5,221,381	\$ 8,479,584	\$ 8,479,584	\$ 8,455,582
Total		\$ 5,950,846	\$ 9,243,196	\$ 9,243,196	\$ 9,016,367

**CITY OF GLENDALE
 GLENDALE WATER & POWER DEPARTMENT
 FIBER OPTIC FUND (5400)**

		Actual 2017-18	Adopted 2018-19	Revised 2018-19	Adopted 2019-20
Salaries & Benefits					
41100	Salaries	\$ -	\$ -	\$ -	\$ 46,001
41300	Hourly wages	-	-	-	53,284
Various	Benefits	-	-	-	15,315
42700	PERS retirement	-	-	-	15,517
42701	PERS cost sharing	-	-	-	(1,825)
Salaries & Benefits Total		\$ -	\$ -	\$ -	\$ 128,292
Maintenance & Operation					
43110	Contractual services	\$ -	\$ -	\$ -	\$ 77,800
45350	General supplies	-	-	-	10,000
46011	Liability Insurance	-	-	-	4,221
Maintenance & Operation Total		\$ -	\$ -	\$ -	\$ 92,021
Total		\$ -	\$ -	\$ -	\$ 220,313

**CITY OF GLENDALE
 GLENDALE WATER & POWER DEPARTMENT
 ELECTRIC SURPLUS FUND (5810)**

	Actual 2017-18	Adopted 2018-19	Revised 2018-19	Adopted 2019-20
Transfers				
48010 Transfer to general fund	\$ 20,161,719	\$ -	\$ -	\$ -
Transfers Total	\$ 20,161,719	\$ -	\$ -	\$ -
Total	\$ 20,161,719	\$ -	\$ -	\$ -

**CITY OF GLENDALE
GLENDALE WATER & POWER DEPARTMENT
ELECTRIC WORKS REVENUE FUND - ADMINISTRATION
(5820-4505)**

		Actual 2017-18	Adopted 2018-19	Revised 2018-19	Adopted 2019-20
Salaries & Benefits					
41100	Salaries	\$ 624,701	\$ 824,573	\$ 824,573	\$ 692,705
41200	Overtime	31,010	7,917	7,917	8,000
41300	Hourly wages	616	36,228	36,228	-
Various	Benefits	156,349	179,661	179,661	143,147
42700	PERS retirement	2,708,048	245,473	245,473	229,140
42701	PERS cost sharing	(24,658)	(33,046)	(33,046)	(26,956)
Salaries & Benefits Total		\$ 3,496,066	\$ 1,260,806	\$ 1,260,806	\$ 1,046,036
Maintenance & Operation					
43110	Contractual services	\$ 147,457	\$ 565,500	\$ 565,500	\$ 471,517
44120	Repairs to office equipment	-	1,500	1,500	1,482
44450	Postage	430	700	700	702
44500	Support of prisoners	21	-	-	-
44550	Travel	4,231	15,600	15,600	15,600
44650	Training	701	3,900	3,900	3,900
44760	Regulatory	10,080	15,600	15,600	15,600
44800	Membership and dues	1,257	1,200	1,200	1,326
45050	Periodicals and newspapers	-	1,500	1,500	1,513
45150	Furniture and equipment	178	-	-	-
45250	Office supplies	8,426	25,000	25,000	28,080
45350	General supplies	11,280	50,000	50,000	50,700
45450	Printing and graphics	-	10,000	10,000	12,090
45681	Business meetings	2,013	5,000	5,000	5,070
45682	Miscellaneous	10,308	15,000	15,000	17,004
46000	Depreciation	24,947,319	25,920,000	25,920,000	25,780,641
46005	Utilities	24,310	57,330	57,330	57,500
46007	Cost allocation charge	5,493,166	5,444,511	5,444,511	5,608,416
46008	Fleet equipment rental charge	1,063,959	1,063,959	1,063,959	1,063,959
46009	ISD service charge	2,847,679	2,895,890	2,895,890	2,850,319
46010	Building maint service charge	1,762,408	1,827,770	1,827,770	1,623,843
46011	Liability Insurance	17,815	29,266	29,266	29,291
46012	Excess insurance and surety	359,589	417,690	417,690	417,690
47050	Interest on bonds	6,452,658	8,409,960	8,409,960	7,200,000
Maintenance & Operation Total		\$ 43,165,285	\$ 46,776,876	\$ 46,776,876	\$ 45,256,243
Transfers					
48010	Transfer to general fund	\$ -	\$ 21,036,300	\$ 21,036,300	\$ 20,277,055
Transfers Total		\$ -	\$ 21,036,300	\$ 21,036,300	\$ 20,277,055
Total		\$ 46,661,352	\$ 69,073,982	\$ 69,073,982	\$ 66,579,334

**CITY OF GLENDALE
 GLENDALE WATER & POWER DEPARTMENT
 ELECTRIC WORKS REVENUE FUND - CUSTOMER SERVICE
 (5820-4509)**

		Actual 2017-18	Adopted 2018-19	Revised 2018-19	Adopted 2019-20
Salaries & Benefits					
41100	Salaries	\$ 2,436,257	\$ 2,713,463	\$ 2,713,463	\$ 2,907,616
41200	Overtime	30,853	31,465	31,465	38,000
41300	Hourly wages	2,590	19,285	19,285	35,152
Various	Benefits	577,460	621,060	621,060	666,900
42700	PERS retirement	634,642	810,659	810,659	984,897
42701	PERS cost sharing	(96,761)	(109,140)	(109,140)	(115,860)
Salaries & Benefits Total		\$ 3,585,041	\$ 4,086,792	\$ 4,086,792	\$ 4,516,705
Maintenance & Operation					
43110	Contractual services	\$ 708,183	\$ 1,528,000	\$ 1,528,000	\$ 1,527,068
44450	Postage	9,277	12,000	12,000	12,160
44550	Travel	-	10,000	10,000	10,032
44650	Training	77	11,600	11,600	9,956
44800	Membership and dues	-	500	500	532
45100	Books	56	-	-	-
45150	Furniture and equipment	8,442	17,900	17,900	17,936
45250	Office supplies	10,372	12,000	12,000	12,768
45300	Small tools	248	2,000	2,000	2,052
45350	General supplies	1,249	3,000	3,000	3,040
45512	Public benefit programs	284	-	-	-
45680	Uncollectible accounts	377,180	300,000	300,000	300,000
45681	Business meetings	-	1,000	1,000	1,140
45682	Miscellaneous	988	1,000	1,000	988
46007	Cost allocation charge	476,594	478,539	478,539	531,075
46008	Fleet equipment rental charge	49,544	49,544	49,544	49,544
46009	ISD service charge	551,473	537,454	537,454	551,984
46010	Building maint service charge	341,227	339,219	339,219	314,469
46011	Liability Insurance	66,956	96,753	96,753	126,619
Maintenance & Operation Total		\$ 2,602,151	\$ 3,400,509	\$ 3,400,509	\$ 3,471,363
Total		\$ 6,187,191	\$ 7,487,301	\$ 7,487,301	\$ 7,988,068

**CITY OF GLENDALE
GLENDALE WATER & POWER DEPARTMENT
ELECTRIC WORKS REVENUE FUND - CONSERVATION & UTILITY MODERNIZATION
(5820-4520)**

		Actual 2017-18	Adopted 2018-19	Revised 2018-19	Adopted 2019-20
Salaries & Benefits					
41100	Salaries	\$ 392,956	\$ 496,702	\$ 496,702	\$ 378,349
41200	Overtime	9,973	36,540	36,540	26,000
41300	Hourly wages	-	53,287	53,287	73,994
Various	Benefits	104,588	118,923	118,923	94,905
42700	PERS retirement	103,476	146,687	146,687	139,451
42701	PERS cost sharing	(15,769)	(19,749)	(19,749)	(16,406)
Salaries & Benefits Total		\$ 595,222	\$ 832,390	\$ 832,390	\$ 696,293
Maintenance & Operation					
43110	Contractual services	\$ 1,563,436	\$ 2,839,840	\$ 2,839,840	\$ 152,880
44100	Repairs to equipment	-	12,000	12,000	-
44200	Advertising	4,514	10,000	10,000	11,232
44450	Postage	44,167	100,000	100,000	102,960
44550	Travel	5,765	15,000	15,000	2,028
44650	Training	5,369	20,000	20,000	4,680
44700	Computer software	9,640	55,700	55,700	-
44800	Membership and dues	723	2,000	2,000	546
45050	Periodicals and newspapers	-	-	-	468
45150	Furniture and equipment	8,684	100,000	100,000	936
45170	Computer hardware	1,426	20,000	20,000	-
45250	Office supplies	3,632	5,000	5,000	1,950
45350	General supplies	20,472	15,000	15,000	1,950
45450	Printing and graphics	9,596	15,000	15,000	15,132
45512	Public benefit programs	(116)	-	-	-
45681	Business meetings	2,020	1,000	1,000	546
45682	Miscellaneous	52,384	20,000	20,000	1,170
46011	Liability Insurance	10,942	20,492	20,492	18,688
Maintenance & Operation Total		\$ 1,742,654	\$ 3,251,032	\$ 3,251,032	\$ 315,166
Total		\$ 2,337,876	\$ 4,083,422	\$ 4,083,422	\$ 1,011,459

**CITY OF GLENDALE
 GLENDALE WATER & POWER DEPARTMENT
 ELECTRIC WORKS REVENUE FUND - BUSINESS SYSTEM SUPPORT
 (5820-4521)**

		Actual 2017-18	Adopted 2018-19	Revised 2018-19	Adopted 2019-20
Salaries & Benefits					
41100	Salaries	\$ -	\$ -	\$ -	\$ 166,631
41300	Hourly wages	-	-	-	38,625
Various	Benefits	-	-	-	39,301
42700	PERS retirement	-	-	-	56,024
42701	PERS cost sharing	-	-	-	(6,594)
Salaries & Benefits Total		\$ -	\$ -	\$ -	\$ 293,987
Maintenance & Operation					
43110	Contractual services	\$ -	\$ -	\$ -	\$ 2,647,477
44120	Repairs to office equipment	-	-	-	13,494
44450	Postage	-	-	-	750
44550	Travel	-	-	-	14,196
44650	Training	-	-	-	17,550
44800	Membership and dues	-	-	-	1,560
45150	Furniture and equipment	-	-	-	101,400
45170	Computer hardware	-	-	-	75,738
45250	Office supplies	-	-	-	3,120
45350	General supplies	-	-	-	14,040
45681	Business meetings	-	-	-	780
45682	Miscellaneous	-	-	-	18,720
46011	Liability Insurance	-	-	-	7,092
Maintenance & Operation Total		\$ -	\$ -	\$ -	\$ 2,915,917
Total		\$ -	\$ -	\$ -	\$ 3,209,904

**CITY OF GLENDALE
 GLENDALE WATER & POWER DEPARTMENT
 ELECTRIC WORKS REVENUE FUND - UTILITY FINANCE
 (5820-4530)**

		Actual 2017-18	Adopted 2018-19	Revised 2018-19	Adopted 2019-20
Salaries & Benefits					
41100	Salaries	\$ 157,166	\$ 210,787	\$ 210,787	\$ 380,477
Various	Benefits	45,416	56,860	56,860	96,635
42700	PERS retirement	40,976	62,276	62,276	127,931
42701	PERS cost sharing	(6,247)	(8,385)	(8,385)	(15,050)
Salaries & Benefits Total		\$ 237,311	\$ 321,538	\$ 321,538	\$ 589,993
Maintenance & Operation					
46011	Liability Insurance	\$ 4,267	\$ 7,378	\$ 7,378	\$ 16,170
Maintenance & Operation Total		\$ 4,267	\$ 7,378	\$ 7,378	\$ 16,170
Total		\$ 241,579	\$ 328,916	\$ 328,916	\$ 606,163

**CITY OF GLENDALE
 GLENDALE WATER & POWER DEPARTMENT
 ELECTRIC WORKS REVENUE FUND - ENVIRONMENTAL & SAFETY
 (5820-4540)**

		Actual 2017-18	Adopted 2018-19	Revised 2018-19	Adopted 2019-20
Salaries & Benefits					
41100	Salaries	\$ 355,079	\$ 374,101	\$ 374,101	\$ 388,919
41200	Overtime	-	4,060	4,060	4,000
Various	Benefits	66,980	62,018	62,018	67,373
42700	PERS retirement	92,199	105,964	105,964	130,557
42701	PERS cost sharing	(14,053)	(14,268)	(14,268)	(15,359)
Salaries & Benefits Total		\$ 500,206	\$ 531,875	\$ 531,875	\$ 575,490
Maintenance & Operation					
43110	Contractual services	\$ 2,557	\$ 156,000	\$ 156,000	\$ 179,100
44550	Travel	1,072	7,000	7,000	7,176
44650	Training	20,844	50,000	50,000	50,700
44760	Regulatory	28,456	-	-	-
44800	Membership and dues	696	2,000	2,000	1,794
45050	Periodicals and newspapers	-	-	-	78
45100	Books	312	1,000	1,000	858
45150	Furniture and equipment	3,711	-	-	390
45250	Office supplies	27	-	-	-
45350	General supplies	53,765	50,000	50,000	54,600
45400	Reports and publications	-	-	-	234
45450	Printing and graphics	-	-	-	390
45681	Business meetings	-	1,000	1,000	936
45682	Miscellaneous	13,563	50,000	50,000	51,012
46011	Liability Insurance	9,654	12,624	12,624	16,695
Maintenance & Operation Total		\$ 134,657	\$ 329,624	\$ 329,624	\$ 363,963
Total		\$ 634,863	\$ 861,499	\$ 861,499	\$ 939,453

**CITY OF GLENDALE
 GLENDALE WATER & POWER DEPARTMENT
 ELECTRIC WORKS REVENUE FUND - UOC & WAREHOUSE
 (5820-4550)**

		Actual 2017-18	Adopted 2018-19	Revised 2018-19	Adopted 2019-20
Salaries & Benefits					
41100	Salaries	\$ 127,025	\$ 195,921	\$ 195,921	\$ 236,429
41200	Overtime	10,287	7,917	7,917	8,000
41300	Hourly wages	2,624	19,792	19,792	19,344
Various	Benefits	46,434	83,044	83,044	92,525
42700	PERS retirement	33,816	63,740	63,740	86,082
42701	PERS cost sharing	(5,136)	(8,581)	(8,581)	(10,128)
Salaries & Benefits Total		\$ 215,049	\$ 361,833	\$ 361,833	\$ 432,252
Maintenance & Operation					
43050	Repairs buildings and grounds	\$ 10,718	\$ 100,000	\$ 100,000	\$ 101,400
43070	Lease payments	43,503	45,000	45,000	44,850
43110	Contractual services	184,725	286,000	286,000	216,834
44450	Postage	20	-	-	-
44600	Laundry and towel service	2,592	20,000	20,000	20,514
45150	Furniture and equipment	42	2,000	2,000	2,340
45250	Office supplies	2,083	4,000	4,000	4,056
45300	Small tools	381	1,000	1,000	1,014
45350	General supplies	7,769	10,000	10,000	10,920
45620	Materials overhead	244,310	-	-	-
45681	Business meetings	-	-	-	390
45682	Miscellaneous	4,948	25,000	25,000	26,520
45684	Discount earned and lost	-	150,000	150,000	151,320
46005	Utilities	374,375	53,235	53,235	380,000
46011	Liability Insurance	3,792	7,828	7,828	11,208
Maintenance & Operation Total		\$ 879,261	\$ 704,063	\$ 704,063	\$ 971,366
Total		\$ 1,094,310	\$ 1,065,896	\$ 1,065,896	\$ 1,403,618

**CITY OF GLENDALE
 GLENDALE WATER & POWER DEPARTMENT
 ELECTRIC WORKS REVENUE FUND - YARD
 (5820-4560)**

		Actual 2017-18	Adopted 2018-19	Revised 2018-19	Adopted 2019-20
Salaries & Benefits					
41100	Salaries	\$ 91,815	\$ 112,770	\$ 112,770	\$ 88,863
41300	Hourly wages	4,379	32,935	32,935	32,919
Various	Benefits	28,375	35,686	35,686	32,424
42700	PERS retirement	24,717	43,289	43,289	39,234
42701	PERS cost sharing	(3,782)	(5,827)	(5,827)	(4,616)
Salaries & Benefits Total		\$ 145,505	\$ 218,853	\$ 218,853	\$ 188,824
Maintenance & Operation					
43110	Contractual services	\$ 15,416	\$ -	\$ -	\$ -
45250	Office supplies	-	-	-	3,900
45350	General supplies	19	-	-	-
45450	Printing and graphics	27	-	-	-
46011	Liability Insurance	2,607	5,099	5,099	5,176
Maintenance & Operation Total		\$ 18,069	\$ 5,099	\$ 5,099	\$ 9,076
Total		\$ 163,574	\$ 223,952	\$ 223,952	\$ 197,900

**CITY OF GLENDALE
 GLENDALE WATER & POWER DEPARTMENT
 ELECTRIC WORKS REVENUE FUND - ENGINEERING
 (5820-4600)**

		Actual 2017-18	Adopted 2018-19	Revised 2018-19	Adopted 2019-20
Salaries & Benefits					
41100	Salaries	\$ 1,448,565	\$ 2,179,195	\$ 2,179,195	\$ 2,383,912
41200	Overtime	23,313	140,000	140,000	140,000
41300	Hourly wages	41,525	130,973	130,973	159,494
Various	Benefits	276,881	444,266	444,266	446,049
42700	PERS retirement	387,424	685,904	685,904	854,668
42701	PERS cost sharing	(57,757)	(90,719)	(90,719)	(100,559)
42799	Salary charges in (out)	-	(340,000)	(340,000)	(340,000)
Salaries & Benefits Total		\$ 2,119,951	\$ 3,149,619	\$ 3,149,619	\$ 3,543,564
Maintenance & Operation					
43110	Contractual services	\$ 1,307,351	\$ 1,375,300	\$ 986,347	\$ 372,000
44450	Postage	4	1,000	1,000	-
44550	Travel	34,755	-	-	5,000
44650	Training	19,185	-	-	15,000
44700	Computer software	319	-	-	-
44760	Regulatory	261	-	-	-
44800	Membership and dues	64,112	130,000	130,000	66,000
45150	Furniture and equipment	1,809	7,500	7,500	2,500
45250	Office supplies	21,430	25,000	25,000	25,000
45350	General supplies	6,586	50,000	50,000	10,000
45681	Business meetings	-	5,000	5,000	5,000
45682	Miscellaneous	89,235	5,000	5,000	95,000
46005	Utilities	5,882	-	-	9,300
46011	Liability Insurance	40,956	85,758	85,758	113,544
Maintenance & Operation Total		\$ 1,591,886	\$ 1,684,558	\$ 1,295,605	\$ 718,344
Total		\$ 3,711,837	\$ 4,834,177	\$ 4,445,224	\$ 4,261,908

**CITY OF GLENDALE
 GLENDALE WATER & POWER DEPARTMENT
 ELECTRIC WORKS REVENUE FUND - CUSTOMER SUPPORT
 (5820-4610)**

		Actual 2017-18	Adopted 2018-19	Revised 2018-19	Adopted 2019-20
Salaries & Benefits					
41100	Salaries	\$ 527,627	\$ 697,332	\$ 697,332	\$ 756,798
41200	Overtime	38,455	55,000	55,000	55,000
Various	Benefits	113,791	148,210	148,210	161,985
42700	PERS retirement	135,917	207,179	207,179	249,844
42701	PERS cost sharing	(20,731)	(27,892)	(27,892)	(29,397)
42799	Salary charges in (out)	-	(95,000)	(95,000)	(95,000)
Salaries & Benefits Total		\$ 795,060	\$ 984,829	\$ 984,829	\$ 1,099,230
Maintenance & Operation					
45350	General supplies	\$ 4,673	\$ 5,000	\$ 5,000	\$ 5,000
46011	Liability Insurance	15,266	26,333	26,333	34,018
Maintenance & Operation Total		\$ 19,939	\$ 31,333	\$ 31,333	\$ 39,018
Total		\$ 814,999	\$ 1,016,162	\$ 1,016,162	\$ 1,138,248

**CITY OF GLENDALE
 GLENDALE WATER & POWER DEPARTMENT
 ELECTRIC WORKS REVENUE FUND - STREET LIGHT
 (5820-4620)**

		Actual 2017-18	Adopted 2018-19	Revised 2018-19	Adopted 2019-20
Salaries & Benefits					
41100	Salaries	\$ 242,598	\$ 251,153	\$ 251,153	\$ 265,443
41200	Overtime	103,697	75,000	75,000	75,000
Various	Benefits	81,788	70,991	70,991	77,064
42700	PERS retirement	61,047	74,618	74,618	86,097
42701	PERS cost sharing	(6,977)	(7,535)	(7,535)	(7,599)
42799	Salary charges in (out)	-	(75,000)	(75,000)	(75,000)
Salaries & Benefits Total		\$ 482,152	\$ 389,227	\$ 389,227	\$ 421,005
Maintenance & Operation					
43050	Repairs buildings and grounds	\$ -	\$ -	\$ -	\$ 5,000
43110	Contractual services	355	20,000	20,000	-
43111	Construction services	8,314	20,000	20,000	-
45300	Small tools	2,891	10,000	10,000	2,000
45350	General supplies	582,753	102,000	102,000	150,000
45681	Business meetings	-	1,000	1,000	1,000
46011	Liability Insurance	9,420	11,415	11,415	14,066
Maintenance & Operation Total		\$ 603,734	\$ 164,415	\$ 164,415	\$ 172,066
Total		\$ 1,085,886	\$ 553,642	\$ 553,642	\$ 593,071

**CITY OF GLENDALE
 GLENDALE WATER & POWER DEPARTMENT
 ELECTRIC WORKS REVENUE FUND - HOWARD SUBSTATION
 (5820-4630)**

		Actual 2017-18	Adopted 2018-19	Revised 2018-19	Adopted 2019-20
Salaries & Benefits					
41100	Salaries	\$ 925,964	\$ 1,292,577	\$ 1,292,577	\$ 1,299,090
41200	Overtime	465,059	460,000	460,000	265,000
41300	Hourly wages	-	44,394	44,394	45,386
Various	Benefits	271,471	327,465	327,465	287,253
42700	PERS retirement	244,670	396,683	396,683	442,666
42701	PERS cost sharing	(29,362)	(42,620)	(42,620)	(41,084)
Salaries & Benefits Total		\$ 1,877,803	\$ 2,478,499	\$ 2,478,499	\$ 2,298,311
Maintenance & Operation					
43050	Repairs buildings and grounds	\$ -	\$ 20,000	\$ 20,000	\$ 20,000
44300	Telephone	11,144	15,000	15,000	15,000
44550	Travel	1,605	5,000	5,000	5,000
44650	Training	3,906	15,000	15,000	15,000
44800	Membership and dues	1,934	-	-	-
45150	Furniture and equipment	10,477	10,000	10,000	5,000
45170	Computer hardware	14,198	20,000	20,000	20,000
45250	Office supplies	2,526	2,000	2,000	2,000
45350	General supplies	7,717	25,000	25,000	15,000
45681	Business meetings	180	500	500	500
46005	Utilities	180,955	164,850	164,850	183,700
46011	Liability Insurance	37,165	62,893	62,893	67,059
Maintenance & Operation Total		\$ 271,807	\$ 340,243	\$ 340,243	\$ 348,259
Total		\$ 2,149,609	\$ 2,818,742	\$ 2,818,742	\$ 2,646,570

**CITY OF GLENDALE
 GLENDALE WATER & POWER DEPARTMENT
 ELECTRIC WORKS REVENUE FUND - METER & TEST SHOP
 (5820-4640)**

		Actual 2017-18	Adopted 2018-19	Revised 2018-19	Adopted 2019-20
Salaries & Benefits					
41100	Salaries	\$ 1,122,598	\$ 1,073,997	\$ 1,073,997	\$ 1,192,058
41200	Overtime	125,649	95,000	95,000	95,000
Various	Benefits	256,066	197,893	197,893	217,810
42700	PERS retirement	285,650	319,088	319,088	389,465
42701	PERS cost sharing	(33,850)	(33,481)	(33,481)	(35,481)
42799	Salary charges in (out)	-	(198,000)	(198,000)	(198,000)
Salaries & Benefits Total		\$ 1,756,111	\$ 1,454,497	\$ 1,454,497	\$ 1,660,852
Maintenance & Operation					
43110	Contractual services	\$ 5,562	\$ 18,000	\$ 18,000	\$ 27,000
44100	Repairs to equipment	1,106	4,000	4,000	2,000
44450	Postage	44	-	-	-
44550	Travel	-	31,300	31,300	12,300
44650	Training	2,999	-	-	12,000
45250	Office supplies	20	-	-	-
45300	Small tools	5,979	-	-	-
45350	General supplies	52,399	15,000	15,000	25,000
46011	Liability Insurance	33,684	40,916	40,916	53,226
Maintenance & Operation Total		\$ 101,794	\$ 109,216	\$ 109,216	\$ 131,526
Total		\$ 1,857,905	\$ 1,563,713	\$ 1,563,713	\$ 1,792,378

**CITY OF GLENDALE
 GLENDALE WATER & POWER DEPARTMENT
 ELECTRIC WORKS REVENUE FUND - STATION MAINTENANCE
 (5820-4650)**

		Actual 2017-18	Adopted 2018-19	Revised 2018-19	Adopted 2019-20
Salaries & Benefits					
41100	Salaries	\$ 1,868,582	\$ 2,023,665	\$ 2,023,665	\$ 2,055,482
41200	Overtime	212,488	170,000	170,000	120,000
Various	Benefits	471,922	446,932	446,932	427,252
42700	PERS retirement	481,272	601,222	601,222	660,415
42701	PERS cost sharing	(57,822)	(63,613)	(63,613)	(60,811)
42799	Salary charges in (out)	-	(500,000)	(500,000)	(500,000)
Salaries & Benefits Total		\$ 2,976,443	\$ 2,678,206	\$ 2,678,206	\$ 2,702,338
Maintenance & Operation					
43050	Repairs buildings and grounds	\$ 3,636	\$ -	\$ -	\$ -
43110	Contractual services	144,934	734,000	734,000	1,004,000
44100	Repairs to equipment	4,069	50,000	50,000	10,000
44450	Postage	186	-	-	-
44550	Travel	-	22,700	22,700	5,700
44650	Training	-	14,400	14,400	14,400
44760	Regulatory	3,103	-	-	7,000
45150	Furniture and equipment	155	-	-	-
45250	Office supplies	1,594	1,000	1,000	1,000
45300	Small tools	5,840	-	-	-
45350	General supplies	270,139	125,000	125,000	160,500
46011	Liability Insurance	56,227	76,775	76,775	88,346
Maintenance & Operation Total		\$ 489,882	\$ 1,023,875	\$ 1,023,875	\$ 1,290,946
Total		\$ 3,466,325	\$ 3,702,081	\$ 3,702,081	\$ 3,993,284

**CITY OF GLENDALE
GLENDALE WATER & POWER DEPARTMENT
ELECTRIC WORKS REVENUE FUND - OVERHEAD & UNDERGROUND
(5820-4660)**

		Actual 2017-18	Adopted 2018-19	Revised 2018-19	Adopted 2019-20
Salaries & Benefits					
41100	Salaries	\$ 3,172,339	\$ 3,593,082	\$ 3,593,082	\$ 4,138,652
41200	Overtime	1,100,197	865,000	865,000	900,000
41300	Hourly wages	78,818	224,589	224,589	227,475
Various	Benefits	752,619	726,698	726,698	779,964
42700	PERS retirement	783,712	1,112,204	1,112,204	1,373,043
42701	PERS cost sharing	(97,844)	(121,244)	(121,244)	(130,857)
42799	Salary charges in (out)	-	(656,000)	(656,000)	(656,000)
Salaries & Benefits Total		\$ 5,789,840	\$ 5,744,329	\$ 5,744,329	\$ 6,632,277
Maintenance & Operation					
43050	Repairs buildings and grounds	\$ 726	\$ 20,000	\$ 20,000	\$ 20,000
43110	Contractual services	97,183	695,000	1,083,953	2,124,300
43111	Construction services	2,878	-	-	-
44100	Repairs to equipment	1,979	10,000	10,000	10,000
44120	Repairs to office equipment	-	1,000	1,000	-
44450	Postage	11	1,000	1,000	1,000
44600	Laundry and towel service	-	1,000	1,000	1,000
44650	Training	7,963	10,000	10,000	50,000
44760	Regulatory	2,062	-	-	-
44800	Membership and dues	39,501	10,000	10,000	10,000
45250	Office supplies	653	-	-	-
45300	Small tools	43,992	60,000	60,000	10,000
45350	General supplies	690,396	500,000	500,000	550,000
45681	Business meetings	62	-	-	-
45682	Miscellaneous	918	500	500	500
46005	Utilities	-	18,900	18,900	-
46011	Liability Insurance	117,959	161,344	161,344	211,372
Maintenance & Operation Total		\$ 1,006,286	\$ 1,488,744	\$ 1,877,697	\$ 2,988,172
Total		\$ 6,796,125	\$ 7,233,073	\$ 7,622,026	\$ 9,620,449

**CITY OF GLENDALE
 GLENDALE WATER & POWER DEPARTMENT
 ELECTRIC WORKS REVENUE FUND - SUBSTRUCTURE
 (5820-4670)**

		Actual 2017-18	Adopted 2018-19	Revised 2018-19	Adopted 2019-20
Salaries & Benefits					
41100	Salaries	\$ 321,235	\$ 447,321	\$ 447,321	\$ 406,428
41200	Overtime	75,384	120,000	120,000	170,000
41300	Hourly wages	-	72,796	72,796	72,792
Various	Benefits	98,581	124,207	124,207	116,879
42700	PERS retirement	85,588	132,901	132,901	155,710
42701	PERS cost sharing	(9,763)	(13,420)	(13,420)	(14,471)
42799	Salary charges in (out)	-	(85,000)	(85,000)	(85,000)
Salaries & Benefits Total		\$ 571,026	\$ 798,805	\$ 798,805	\$ 822,338
Maintenance & Operation					
43111	Construction services	\$ 2,936	\$ -	\$ -	\$ -
44450	Postage	35	-	-	-
45300	Small tools	756	5,000	5,000	5,000
45350	General supplies	16,159	5,000	5,000	5,000
46011	Liability Insurance	10,709	19,856	19,856	26,920
Maintenance & Operation Total		\$ 30,594	\$ 29,856	\$ 29,856	\$ 36,920
Total		\$ 601,621	\$ 828,661	\$ 828,661	\$ 859,258

**CITY OF GLENDALE
GLENDALE WATER & POWER DEPARTMENT
ELECTRIC WORKS REVENUE FUND - POWER MANAGEMENT
(5820-4680)**

		Actual 2017-18	Adopted 2018-19	Revised 2018-19	Adopted 2019-20
Salaries & Benefits					
41100	Salaries	\$ 784,732	\$ 1,496,539	\$ 1,496,539	\$ 1,443,761
41200	Overtime	123	-	-	-
41300	Hourly wages	35,757	90,824	90,824	90,979
Various	Benefits	171,296	302,044	302,044	280,842
42700	PERS retirement	213,998	471,608	471,608	518,758
42701	PERS cost sharing	(32,641)	(63,495)	(63,495)	(61,033)
Salaries & Benefits Total		\$ 1,173,264	\$ 2,297,520	\$ 2,297,520	\$ 2,273,307
Maintenance & Operation					
43110	Contractual services	\$ 4,332,084	\$ 5,919,181	\$ 5,919,181	\$ 5,857,500
44250	Data communication	-	1,500	1,500	-
44300	Telephone	-	500	500	-
44450	Postage	143	1,000	1,000	1,000
44550	Travel	6,113	35,000	35,000	35,000
44650	Training	6,634	22,000	22,000	22,000
44700	Computer software	4,240	90,000	90,000	10,000
44760	Regulatory	99,482	500,000	500,000	410,000
44761	RAC variance	(8,029,522)	-	-	-
44800	Membership and dues	10,702	20,000	20,000	70,000
45050	Periodicals and newspapers	3,700	10,000	10,000	10,000
45250	Office supplies	-	-	-	5,000
45350	General supplies	139	500	500	500
45501	Fuel landfill gas	2,472,865	2,473,000	2,473,000	-
45502	Fuel natural gas	12,404,228	12,505,000	12,505,000	17,610,000
45506	Carbon allowances	98,684	-	-	1,500,000
45507	Renewable energy credits	(2,594,010)	-	-	30,000
45509	ECAC variance	(4,299,575)	-	-	-
45510	Purchased power	81,802,101	100,000,000	100,000,000	118,000,000
45511	Hedging costs	-	800,000	800,000	800,000
45681	Business meetings	240	1,000	1,000	1,000
45682	Miscellaneous	125	500	500	500
46001	Gas depletion	1,170,974	-	-	1,105,000
46005	Utilities	1,423	-	-	1,900
46011	Liability Insurance	22,439	55,559	55,559	65,231
Maintenance & Operation Total		\$ 87,513,210	\$ 122,434,740	\$ 122,434,740	\$ 145,534,631
Total		\$ 88,686,475	\$ 124,732,260	\$ 124,732,260	\$ 147,807,938

**CITY OF GLENDALE
 GLENDALE WATER & POWER DEPARTMENT
 ELECTRIC WORKS REVENUE FUND - POWER PLANT
 (5820-4690)**

		Actual 2017-18	Adopted 2018-19	Revised 2018-19	Adopted 2019-20
Salaries & Benefits					
41100	Salaries	\$ 3,707,155	\$ 4,531,107	\$ 4,531,107	\$ 4,549,590
41200	Overtime	1,132,574	875,000	875,000	875,000
41300	Hourly wages	99,017	102,921	102,921	98,301
Various	Benefits	1,068,474	1,084,613	1,084,613	1,051,453
42700	PERS retirement	1,030,191	1,376,769	1,376,769	1,498,387
42701	PERS cost sharing	(129,765)	(153,097)	(153,097)	(145,845)
Salaries & Benefits Total		\$ 6,907,647	\$ 7,817,313	\$ 7,817,313	\$ 7,926,886
Maintenance & Operation					
43050	Repairs buildings and grounds	\$ 3,694	\$ 75,000	\$ 75,000	\$ 75,000
43070	Lease payments	1,668	-	-	-
43110	Contractual services	845,282	1,550,000	1,550,000	1,050,000
44100	Repairs to equipment	341,444	300,000	300,000	300,000
44450	Postage	774	1,000	1,000	1,000
44500	Support of prisoners	79	-	-	-
44550	Travel	5,252	10,000	10,000	10,000
44600	Laundry and towel service	11,112	20,000	20,000	20,000
44650	Training	7,333	26,000	26,000	26,000
44700	Computer software	-	5,000	5,000	5,000
44760	Regulatory	78,678	300,000	300,000	300,000
45150	Furniture and equipment	109	5,000	5,000	5,000
45170	Computer hardware	1,182	5,000	5,000	5,000
45250	Office supplies	8,198	10,000	10,000	10,000
45300	Small tools	50	15,000	15,000	15,000
45350	General supplies	652,354	800,000	800,000	800,000
45681	Business meetings	1,785	2,000	2,000	2,000
45682	Miscellaneous	2,257	4,000	4,000	4,000
46005	Utilities	2,466,354	1,959,300	1,959,300	2,503,300
46011	Liability Insurance	133,651	192,815	192,815	226,485
Maintenance & Operation Total		\$ 4,561,257	\$ 5,280,115	\$ 5,280,115	\$ 5,357,785
Total		\$ 11,468,905	\$ 13,097,428	\$ 13,097,428	\$ 13,284,671

**CITY OF GLENDALE
GLENDALE WATER & POWER DEPARTMENT
ELECTRIC DEPRECIATION FUND (5830)**

		Actual 2017-18	Adopted 2018-19	Revised 2018-19	Adopted 2019-20
Salaries & Benefits					
41100	Salaries	\$ 290,775	\$ -	\$ -	\$ -
41200	Overtime	348,803	-	-	-
41300	Hourly wages	15,788	-	-	-
Various	Benefits	97,535	-	-	-
42700	PERS retirement	76,513	-	-	-
42701	PERS cost sharing	(10,117)	-	-	-
Salaries & Benefits Total		\$ 819,296	\$ -	\$ -	\$ -
Maintenance & Operation					
43110	Contractual services	\$ 4,470,609	\$ 500,000	\$ 4,135,620	\$ 7,800,000
43111	Construction services	256,725	-	-	-
44100	Repairs to equipment	7,146	-	-	-
44550	Travel	2,432	-	-	-
44700	Computer software	67,772	-	-	-
45250	Office supplies	441	-	-	-
45350	General supplies	739,976	1,500,000	1,500,000	-
45681	Business meetings	1,011	-	-	-
46011	Liability Insurance	17,586	-	-	-
Maintenance & Operation Total		\$ 5,563,697	\$ 2,000,000	\$ 5,635,620	\$ 7,800,000
Capital Outlay					
51000	Capital outlay	\$ 514,171	\$ 3,841,938	\$ 3,841,938	\$ 2,979,300
Capital Outlay Total		\$ 514,171	\$ 3,841,938	\$ 3,841,938	\$ 2,979,300
Capital Improvement					
51200	Other improvements	\$ -	\$ 6,942,000	\$ 3,942,000	\$ 1,427,000
51250	Equipment	415,292	-	-	5,300,000
51800	Mobile equipment	10,791	-	-	-
52100	Construction	702,383	-	-	-
53140	Administration costs	918	-	-	-
53300	Other expenditures	-	-	-	3,580,000
59999	Asset capitalization	(8,026,548)	-	-	-
Capital Improvement Total		\$ (6,897,164)	\$ 6,942,000	\$ 3,942,000	\$ 10,307,000
Total		\$ -	\$ 12,783,938	\$ 13,419,558	\$ 21,086,300

**CITY OF GLENDALE
GLENDALE WATER & POWER DEPARTMENT
ELECTRIC CUSTOMER PAID CAPITAL FUND (5850)**

		Actual 2017-18	Adopted 2018-19	Revised 2018-19	Adopted 2019-20
Salaries & Benefits					
41100	Salaries	\$ 143,491	\$ -	\$ -	\$ -
41200	Overtime	132,504	-	-	-
41300	Hourly wages	278	-	-	-
Various	Benefits	44,984	-	-	-
42700	PERS retirement	37,591	-	-	-
42701	PERS cost sharing	(4,966)	-	-	-
Salaries & Benefits Total		\$ 353,883	\$ -	\$ -	\$ -
Maintenance & Operation					
43090	Equipment usage	\$ -	\$ -	\$ -	\$ -
43110	Contractual services	21,842	-	400,000	-
43111	Construction services	43,333	-	-	-
45350	General supplies	346,220	-	-	-
46011	Liability Insurance	7,458	-	-	-
Maintenance & Operation Total		\$ 418,853	\$ -	\$ 400,000	\$ -
Capital Improvement					
51200	Other improvements	\$ -	\$ 2,000,000	\$ 1,600,000	\$ -
52000	Engineering	7,344	-	-	-
52100	Construction	17,260	-	-	-
53300	Other expenditures	-	-	-	2,000,000
59999	Asset capitalization	(797,339)	-	-	-
Capital Improvement Total		\$ (772,735)	\$ 2,000,000	\$ 1,600,000	\$ 2,000,000
Total		\$ -	\$ 2,000,000	\$ 2,000,000	\$ 2,000,000

**CITY OF GLENDALE
 GLENDALE WATER & POWER DEPARTMENT
 ENERGY COST ADJUSTMENT CHARGE FUND (5860)**

	Actual 2017-18	Adopted 2018-19	Revised 2018-19	Adopted 2019-20
Maintenance & Operation				
45509 ECAC variance	\$ 4,299,575	\$ -	\$ -	\$ -
Maintenance & Operation Total	\$ 4,299,575	\$ -	\$ -	\$ -
Total	\$ 4,299,575	\$ -	\$ -	\$ -

**CITY OF GLENDALE
 GLENDALE WATER & POWER DEPARTMENT
 REGULATORY ADJUSTMENT CHARGE FUND (5870)**

	Actual 2017-18	Adopted 2018-19	Revised 2018-19	Adopted 2019-20
Maintenance & Operation				
44761 RAC variance	\$ 8,029,522	\$ -	\$ -	\$ -
Maintenance & Operation Total	\$ 8,029,522	\$ -	\$ -	\$ -
Total	\$ 8,029,522	\$ -	\$ -	\$ -

**CITY OF GLENDALE
 GLENDALE WATER & POWER DEPARTMENT
 ELECTRIC CUSTOMER REPAIR FUND (5880)**

	Actual 2017-18	Adopted 2018-19	Revised 2018-19	Adopted 2019-20
Maintenance & Operation				
45350 General supplies	\$ -	\$ 50,000	\$ 50,000	\$ 50,000
Maintenance & Operation Total	\$ -	\$ 50,000	\$ 50,000	\$ 50,000
Total	\$ -	\$ 50,000	\$ 50,000	\$ 50,000

**CITY OF GLENDALE
GLENDALE WATER & POWER DEPARTMENT
WATER WORKS REVENUE FUND - ADMINISTRATION
(5920-4505)**

		Actual 2017-18	Adopted 2018-19	Revised 2018-19	Adopted 2019-20
Salaries & Benefits					
41100	Salaries	\$ 171,104	\$ 234,515	\$ 234,515	\$ 197,476
41200	Overtime	12,885	2,233	2,233	2,000
41300	Hourly wages	-	10,218	10,218	-
Various	Benefits	43,978	51,145	51,145	40,989
42700	PERS retirement	1,077,337	69,811	69,811	65,345
42701	PERS cost sharing	(6,771)	(9,399)	(9,399)	(7,692)
Salaries & Benefits Total		\$ 1,298,533	\$ 358,523	\$ 358,523	\$ 298,118
Maintenance & Operation					
43110	Contractual services	\$ 135,365	\$ 159,500	\$ 159,500	\$ 233,043
44120	Repairs to office equipment	-	400	400	418
44450	Postage	121	200	200	198
44500	Support of prisoners	3	-	-	-
44550	Travel	1,459	4,400	4,400	4,400
44650	Training	132	1,100	1,100	1,100
44760	Regulatory	2,843	4,400	4,400	4,400
44800	Membership and dues	214	500	500	374
45050	Periodicals and newspapers	-	440	440	427
45150	Furniture and equipment	50	-	-	-
45250	Office supplies	2,376	11,000	11,000	7,920
45350	General supplies	11	15,000	15,000	14,300
45450	Printing and graphics	-	5,500	5,500	3,410
45681	Business meetings	237	1,500	1,500	1,430
45682	Miscellaneous	2,549	6,800	6,800	4,796
46000	Depreciation	5,856,293	6,870,000	6,870,000	6,991,457
46005	Utilities	-	16,170	16,170	16,500
46007	Cost allocation charge	3,612,593	4,516,935	4,516,935	4,563,164
46008	Fleet equipment rental charge	471,601	471,601	471,601	471,601
46009	ISD service charge	803,191	816,789	816,789	803,936
46010	Building maint service charge	497,089	515,525	515,525	458,007
46011	Liability Insurance	4,996	8,324	8,324	8,352
46012	Excess insurance and surety	101,423	117,810	117,810	117,810
47050	Interest on bonds	3,217,852	2,373,000	2,373,000	3,134,000
Maintenance & Operation Total		\$ 14,710,397	\$ 15,916,894	\$ 15,916,894	\$ 16,841,043
Total		\$ 16,008,930	\$ 16,275,417	\$ 16,275,417	\$ 17,139,161

**CITY OF GLENDALE
 GLENDALE WATER & POWER DEPARTMENT
 WATER WORKS REVENUE FUND - CUSTOMER SERVICE
 (5920-4509)**

		Actual 2017-18	Adopted 2018-19	Revised 2018-19	Adopted 2019-20
Salaries & Benefits					
41100	Salaries	\$ 746,685	\$ 853,597	\$ 853,597	\$ 914,925
41200	Overtime	8,941	10,150	10,150	12,000
41300	Hourly wages	488	6,090	6,090	11,101
Various	Benefits	176,342	195,444	195,444	211,348
42700	PERS retirement	194,298	255,031	255,031	309,996
42701	PERS cost sharing	(29,635)	(34,336)	(34,336)	(36,503)
Salaries & Benefits Total		\$ 1,097,120	\$ 1,285,976	\$ 1,285,976	\$ 1,422,867
Maintenance & Operation					
43110	Contractual services	\$ 211,799	\$ 482,000	\$ 482,000	\$ 482,232
44450	Postage	2,929	4,000	4,000	3,840
44550	Travel	-	3,200	3,200	3,168
44650	Training	22	1,500	1,500	3,144
44800	Membership and dues	-	200	200	168
45150	Furniture and equipment	2,666	5,700	5,700	5,664
45250	Office supplies	3,116	4,800	4,800	4,032
45300	Small tools	116	700	700	648
45350	General supplies	19	1,000	1,000	960
45512	Public benefit programs	79	-	-	-
45680	Uncollectible accounts	32,646	70,000	70,000	70,000
45681	Business meetings	-	500	500	360
45682	Miscellaneous	312	300	300	312
46007	Cost allocation charge	150,503	151,118	151,118	167,708
46008	Fleet equipment rental charge	15,645	15,645	15,645	15,645
46009	ISD service charge	174,150	169,722	169,722	174,310
46010	Building maint service charge	107,756	107,122	107,122	99,306
46011	Liability Insurance	20,497	30,452	30,452	39,940
Maintenance & Operation Total		\$ 722,254	\$ 1,047,959	\$ 1,047,959	\$ 1,071,437
Total		\$ 1,819,374	\$ 2,333,935	\$ 2,333,935	\$ 2,494,304

**CITY OF GLENDALE
GLENDALE WATER & POWER DEPARTMENT
WATER WORKS REVENUE FUND - CONSERVATION & UTILITY MODERNIZATION
(5920-4520)**

		Actual 2017-18	Adopted 2018-19	Revised 2018-19	Adopted 2019-20
Salaries & Benefits					
41100	Salaries	\$ 101,627	\$ 136,617	\$ 136,617	\$ 105,815
41200	Overtime	1,900	11,165	11,165	7,500
41300	Hourly wages	-	-	-	20,937
Various	Benefits	26,950	31,778	31,778	26,724
42700	PERS retirement	26,744	40,345	40,345	39,058
42701	PERS cost sharing	(4,079)	(5,433)	(5,433)	(4,598)
Salaries & Benefits Total		\$ 153,143	\$ 214,472	\$ 214,472	\$ 195,436
Maintenance & Operation					
43110	Contractual services	\$ 464,055	\$ 927,160	\$ 927,160	\$ 208,920
44100	Repairs to equipment	-	5,300	5,300	-
44200	Advertising	1,273	4,400	4,400	3,168
44450	Postage	7,727	33,000	33,000	29,040
44550	Travel	1,621	5,800	5,800	572
44650	Training	1,514	8,200	8,200	1,320
44700	Computer software	1,750	15,700	15,700	-
44800	Membership and dues	4,477	700	700	154
45050	Periodicals and newspapers	-	600	600	132
45150	Furniture and equipment	2,449	31,200	31,200	264
45170	Computer hardware	750	5,700	5,700	-
45250	Office supplies	1,024	1,200	1,200	550
45350	General supplies	6,200	5,500	5,500	550
45450	Printing and graphics	5,376	4,400	4,400	4,268
45512	Public benefit programs	(33)	-	-	-
45681	Business meetings	553	200	200	154
45682	Miscellaneous	11,619	5,200	5,200	330
46011	Liability Insurance	2,812	5,162	5,162	5,249
Maintenance & Operation Total		\$ 513,168	\$ 1,059,422	\$ 1,059,422	\$ 254,671
Total		\$ 666,311	\$ 1,273,894	\$ 1,273,894	\$ 450,107

**CITY OF GLENDALE
 GLENDALE WATER & POWER DEPARTMENT
 WATER WORKS REVENUE FUND - BUSINESS SYSTEM SUPPORT
 (5920-4521)**

		Actual 2017-18	Adopted 2018-19	Revised 2018-19	Adopted 2019-20
Salaries & Benefits					
41100	Salaries	\$ -	\$ -	\$ -	\$ 41,667
41300	Hourly wages	-	-	-	10,894
Various	Benefits	-	-	-	9,960
42700	PERS retirement	-	-	-	14,012
42701	PERS cost sharing	-	-	-	(1,652)
Salaries & Benefits Total		\$ -	\$ -	\$ -	\$ 74,881
Maintenance & Operation					
43110	Contractual services	\$ -	\$ -	\$ -	\$ 680,928
44120	Repairs to office equipment	-	-	-	3,806
44450	Postage	-	-	-	250
44550	Travel	-	-	-	4,004
44650	Training	-	-	-	4,950
44800	Membership and dues	-	-	-	440
45150	Furniture and equipment	-	-	-	28,600
45170	Computer hardware	-	-	-	21,362
45250	Office supplies	-	-	-	880
45350	General supplies	-	-	-	3,960
45681	Business meetings	-	-	-	220
45682	Miscellaneous	-	-	-	5,280
46011	Liability Insurance	-	-	-	1,780
Maintenance & Operation Total		\$ -	\$ -	\$ -	\$ 756,460
Total		\$ -	\$ -	\$ -	\$ 831,341

**CITY OF GLENDALE
 GLENDALE WATER & POWER DEPARTMENT
 WATER WORKS REVENUE FUND - UTILITY FINANCE
 (5920-4530)**

		Actual 2017-18	Adopted 2018-19	Revised 2018-19	Adopted 2019-20
Salaries & Benefits					
41100	Salaries	\$ 42,659	\$ 59,453	\$ 59,453	\$ 107,043
Various	Benefits	12,161	16,039	16,039	27,239
42700	PERS retirement	11,117	17,567	17,567	35,992
42701	PERS cost sharing	(1,696)	(2,365)	(2,365)	(4,237)
Salaries & Benefits Total		\$ 64,242	\$ 90,694	\$ 90,694	\$ 166,037
Maintenance & Operation					
46011	Liability Insurance	\$ 1,158	\$ 2,082	\$ 2,082	\$ 4,553
Maintenance & Operation Total		\$ 1,158	\$ 2,082	\$ 2,082	\$ 4,553
Total		\$ 65,400	\$ 92,776	\$ 92,776	\$ 170,590

**CITY OF GLENDALE
 GLENDALE WATER & POWER DEPARTMENT
 WATER WORKS REVENUE FUND - ENVIRONMENTAL & SAFETY
 (5920-4540)**

		Actual 2017-18	Adopted 2018-19	Revised 2018-19	Adopted 2019-20
Salaries & Benefits					
41100	Salaries	\$ 97,437	\$ 105,515	\$ 105,515	\$ 109,700
41200	Overtime	-	1,218	1,218	1,200
Various	Benefits	18,323	17,495	17,495	19,112
42700	PERS retirement	25,290	29,888	29,888	36,829
42701	PERS cost sharing	(3,856)	(4,024)	(4,024)	(4,335)
Salaries & Benefits Total		\$ 137,193	\$ 150,092	\$ 150,092	\$ 162,506
Maintenance & Operation					
43110	Contractual services	\$ -	\$ 44,000	\$ 44,000	\$ 20,900
44550	Travel	302	2,200	2,200	2,024
44650	Training	5,738	15,000	15,000	14,300
44760	Regulatory	330	-	-	-
44800	Membership and dues	141	300	300	506
45050	Periodicals and newspapers	-	100	100	22
45100	Books	88	100	100	242
45150	Furniture and equipment	349	500	500	110
45250	Office supplies	8	-	-	-
45350	General supplies	1,030	20,000	20,000	15,400
45400	Reports and publications	-	300	300	66
45450	Printing and graphics	-	500	500	110
45681	Business meetings	-	200	200	264
45682	Miscellaneous	3,935	15,400	15,400	14,388
46011	Liability Insurance	2,649	3,564	3,564	4,718
Maintenance & Operation Total		\$ 14,571	\$ 102,164	\$ 102,164	\$ 73,050
Total		\$ 151,764	\$ 252,256	\$ 252,256	\$ 235,556

**CITY OF GLENDALE
 GLENDALE WATER & POWER DEPARTMENT
 WATER WORKS REVENUE FUND - UOC & WAREHOUSE
 (5920-4550)**

		Actual 2017-18	Adopted 2018-19	Revised 2018-19	Adopted 2019-20
Salaries & Benefits					
41100	Salaries	\$ 34,285	\$ 55,261	\$ 55,261	\$ 66,689
41200	Overtime	2,916	2,233	2,233	2,000
41300	Hourly wages	91	5,582	5,582	5,456
Various	Benefits	12,417	23,468	23,468	26,212
42700	PERS retirement	8,962	17,976	17,976	24,289
42701	PERS cost sharing	(1,360)	(2,421)	(2,421)	(2,859)
Salaries & Benefits Total		\$ 57,311	\$ 102,099	\$ 102,099	\$ 121,787
Maintenance & Operation					
43050	Repairs buildings and grounds	\$ 3,073	\$ 30,000	\$ 30,000	\$ 28,600
43070	Lease payments	12,270	12,500	12,500	12,650
43110	Contractual services	52,658	110,000	110,000	61,158
44600	Laundry and towel service	740	6,300	6,300	5,786
45150	Furniture and equipment	12	1,000	1,000	660
45250	Office supplies	587	1,200	1,200	1,144
45300	Small tools	107	300	300	286
45350	General supplies	1,226	4,000	4,000	3,080
45620	Materials overhead	68,908	-	-	-
45681	Business meetings	-	500	500	110
45682	Miscellaneous	1,396	9,000	9,000	7,480
45684	Discount earned and lost	-	44,000	44,000	42,680
46005	Utilities	105,593	15,015	15,015	107,200
46011	Liability Insurance	1,011	2,207	2,207	3,156
Maintenance & Operation Total		\$ 247,583	\$ 236,022	\$ 236,022	\$ 273,990
Total		\$ 304,894	\$ 338,121	\$ 338,121	\$ 395,777

**CITY OF GLENDALE
 GLENDALE WATER & POWER DEPARTMENT
 WATER WORKS REVENUE FUND - YARD
 (5920-4560)**

		Actual 2017-18	Adopted 2018-19	Revised 2018-19	Adopted 2019-20
Salaries & Benefits					
41100	Salaries	\$ 25,523	\$ 31,807	\$ 31,807	\$ 25,066
41200	Overtime	25	-	-	-
41300	Hourly wages	15,108	9,289	9,289	9,247
Various	Benefits	8,558	10,111	10,111	9,214
42700	PERS retirement	10,508	12,210	12,210	11,063
42701	PERS cost sharing	(1,607)	(1,644)	(1,644)	(1,303)
Salaries & Benefits Total		\$ 58,116	\$ 61,773	\$ 61,773	\$ 53,287
Maintenance & Operation					
43110	Contractual services	\$ 4,348	\$ -	\$ -	\$ -
45250	Office supplies	-	-	-	1,100
45350	General supplies	5	-	-	-
46011	Liability Insurance	1,102	1,439	1,439	1,459
Maintenance & Operation Total		\$ 5,455	\$ 1,439	\$ 1,439	\$ 2,559
Total		\$ 63,571	\$ 63,212	\$ 63,212	\$ 55,846

**CITY OF GLENDALE
GLENDALE WATER & POWER DEPARTMENT
WATER WORKS REVENUE FUND - ENGINEERING
(5920-4700)**

		Actual 2017-18	Adopted 2018-19	Revised 2018-19	Adopted 2019-20
Salaries & Benefits					
41100	Salaries	\$ 1,218,812	\$ 1,564,625	\$ 1,564,625	\$ 1,613,791
41200	Overtime	6,592	15,000	15,000	15,000
41300	Hourly wages	34,187	89,525	89,525	87,071
Various	Benefits	278,139	341,459	341,459	354,701
42700	PERS retirement	307,700	491,451	491,451	567,773
42701	PERS cost sharing	(46,949)	(66,168)	(66,168)	(66,803)
42799	Salary charges in (out)	-	(220,000)	(220,000)	(220,000)
Salaries & Benefits Total		\$ 1,798,480	\$ 2,215,892	\$ 2,215,892	\$ 2,351,533
Maintenance & Operation					
43110	Contractual services	\$ 361,559	\$ 864,000	\$ 864,000	\$ 941,500
44450	Postage	12	-	-	-
44550	Travel	1,208	4,000	4,000	4,000
44650	Training	4,751	4,000	4,000	4,000
44700	Computer software	15,900	34,500	34,500	-
44760	Regulatory	67,890	125,700	125,700	135,000
44800	Membership and dues	41,036	70,400	70,400	80,000
45100	Books	64	300	300	300
45150	Furniture and equipment	1,152	-	-	-
45170	Computer hardware	1,143	3,000	3,000	2,000
45250	Office supplies	1,671	1,200	1,200	2,200
45350	General supplies	2,025	200	200	1,200
45520	Purchased water	17,292,358	18,756,200	18,756,200	18,756,200
45681	Business meetings	-	500	500	500
45682	Miscellaneous	680	100	100	2,500
46005	Utilities	-	-	-	3,600,000
46011	Liability Insurance	34,260	58,422	58,422	72,113
Maintenance & Operation Total		\$ 17,825,710	\$ 19,922,522	\$ 19,922,522	\$ 23,601,513
Total		\$ 19,624,190	\$ 22,138,414	\$ 22,138,414	\$ 25,953,046

**CITY OF GLENDALE
 GLENDALE WATER & POWER DEPARTMENT
 WATER WORKS REVENUE FUND - WATER DISTRIBUTION
 (5920-4710)**

		Actual 2017-18	Adopted 2018-19	Revised 2018-19	Adopted 2019-20
Salaries & Benefits					
41100	Salaries	\$ 1,399,770	\$ 1,990,088	\$ 1,990,088	\$ 1,942,013
41200	Overtime	109,015	70,000	70,000	100,000
41300	Hourly wages	34,606	59,187	59,187	60,030
Various	Benefits	463,641	734,554	734,554	695,012
42700	PERS retirement	371,922	608,261	608,261	654,790
42701	PERS cost sharing	(49,864)	(69,253)	(69,253)	(64,727)
42799	Salary charges in (out)	-	(310,000)	(310,000)	(310,000)
Salaries & Benefits Total		\$ 2,329,089	\$ 3,082,837	\$ 3,082,837	\$ 3,077,118
Maintenance & Operation					
43050	Repairs buildings and grounds	\$ -	\$ 2,500	\$ 2,500	\$ -
43110	Contractual services	94,698	-	-	215,000
43111	Construction services	150,476	180,000	180,000	-
44100	Repairs to equipment	1,311	12,000	12,000	10,000
44600	Laundry and towel service	7,299	6,000	6,000	6,000
44650	Training	12	-	-	-
44760	Regulatory	35,574	40,000	40,000	20,000
45250	Office supplies	31	200	200	200
45300	Small tools	14,633	20,000	20,000	15,000
45350	General supplies	333,445	305,000	305,000	300,000
45682	Miscellaneous	99	1,000	1,000	500
46005	Utilities	29,065	111,300	111,300	29,500
46011	Liability Insurance	41,836	74,173	74,173	88,564
Maintenance & Operation Total		\$ 708,478	\$ 752,173	\$ 752,173	\$ 684,764
Total		\$ 3,037,567	\$ 3,835,010	\$ 3,835,010	\$ 3,761,882

**CITY OF GLENDALE
GLENDALE WATER & POWER DEPARTMENT
WATER WORKS REVENUE FUND - OPERATION
(5920-4720)**

		Actual 2017-18	Adopted 2018-19	Revised 2018-19	Adopted 2019-20
Salaries & Benefits					
41100	Salaries	\$ 1,006,199	\$ 1,046,094	\$ 1,046,094	\$ 1,183,227
41200	Overtime	99,699	200,000	200,000	100,000
41300	Hourly wages	3,630	28,483	28,483	28,600
Various	Benefits	298,480	352,913	352,913	354,841
42700	PERS retirement	257,017	318,809	318,809	396,523
42701	PERS cost sharing	(34,323)	(37,680)	(37,680)	(40,529)
Salaries & Benefits Total		\$ 1,630,702	\$ 1,908,619	\$ 1,908,619	\$ 2,022,662
Maintenance & Operation					
43050	Repairs buildings and grounds	\$ 51,177	\$ 76,000	\$ 76,000	\$ 70,000
43110	Contractual services	542,656	557,000	557,000	547,000
43111	Construction services	29,056	-	-	-
44100	Repairs to equipment	45,167	95,000	95,000	95,000
44120	Repairs to office equipment	-	2,000	2,000	-
44450	Postage	12	-	-	-
44550	Travel	4,630	7,700	7,700	7,700
44600	Laundry and towel service	-	10,000	10,000	-
44650	Training	16,545	32,800	32,800	32,800
44700	Computer software	54,459	-	-	-
44760	Regulatory	82,380	25,000	25,000	25,000
44800	Membership and dues	27,928	3,000	3,000	3,000
45150	Furniture and equipment	-	1,000	1,000	-
45170	Computer hardware	-	2,000	2,000	-
45250	Office supplies	3,985	5,000	5,000	5,000
45300	Small tools	758	500	500	500
45350	General supplies	113,697	180,000	180,000	180,000
45450	Printing and graphics	-	30,200	30,200	30,200
45681	Business meetings	-	1,500	1,500	1,500
45682	Miscellaneous	-	4,000	4,000	4,000
46005	Utilities	3,232,156	3,583,184	3,583,184	-
46011	Liability Insurance	29,934	44,609	44,609	55,756
Maintenance & Operation Total		\$ 4,234,542	\$ 4,660,493	\$ 4,660,493	\$ 1,057,456
Total		\$ 5,865,244	\$ 6,569,112	\$ 6,569,112	\$ 3,080,118

**CITY OF GLENDALE
 GLENDALE WATER & POWER DEPARTMENT
 WATER WORKS REVENUE FUND - WATER QUALITY
 (5920-4730)**

		Actual 2017-18	Adopted 2018-19	Revised 2018-19	Adopted 2019-20
Salaries & Benefits					
41100	Salaries	\$ 660,564	\$ 754,716	\$ 754,716	\$ 743,024
41200	Overtime	11,174	20,000	20,000	20,000
Various	Benefits	213,165	262,924	262,924	271,711
42700	PERS retirement	171,681	224,226	224,226	249,567
42701	PERS cost sharing	(22,034)	(25,211)	(25,211)	(24,676)
Salaries & Benefits Total		\$ 1,034,551	\$ 1,236,655	\$ 1,236,655	\$ 1,259,626
Maintenance & Operation					
43050	Repairs buildings and grounds	\$ -	\$ 1,000	\$ 1,000	\$ -
43110	Contractual services	95,876	340,000	340,000	300,000
44100	Repairs to equipment	-	3,000	3,000	-
44450	Postage	405	10,000	10,000	2,500
44650	Training	296	-	-	-
44700	Computer software	3,150	-	-	30,000
44760	Regulatory	96	40,000	40,000	-
44800	Membership and dues	80	500	500	500
45250	Office supplies	62	-	-	-
45350	General supplies	91,364	220,000	220,000	240,000
45450	Printing and graphics	-	30,000	30,000	30,000
45682	Miscellaneous	46	-	-	-
46011	Liability Insurance	18,148	27,114	27,114	32,431
Maintenance & Operation Total		\$ 209,523	\$ 671,614	\$ 671,614	\$ 635,431
Total		\$ 1,244,074	\$ 1,908,269	\$ 1,908,269	\$ 1,895,057

**CITY OF GLENDALE
GLENDALE WATER & POWER DEPARTMENT
WATER DEPRECIATION FUND (5930)**

		Actual 2017-18	Adopted 2018-19	Revised 2018-19	Adopted 2019-20
Salaries & Benefits					
41100	Salaries	\$ 252,510	\$ -	\$ -	\$ -
41200	Overtime	38,377	-	-	-
41300	Hourly wages	11,356	-	-	-
Various	Benefits	75,095	-	-	-
42700	PERS retirement	69,604	-	-	-
42701	PERS cost sharing	(9,222)	-	-	-
Salaries & Benefits Total		\$ 437,720	\$ -	\$ -	\$ -
Maintenance & Operation					
43110	Contractual services	\$ 1,432,467	\$ -	\$ (134,953)*	\$ 5,600,000
43111	Construction services	708,377	4,700,000	4,700,000	-
44100	Repairs to equipment	51	-	-	-
44760	Regulatory	12,042	-	-	-
45350	General supplies	107,496	-	-	-
46011	Liability Insurance	8,184	-	-	-
Maintenance & Operation Total		\$ 2,268,616	\$ 4,700,000	\$ 4,565,047	\$ 5,600,000
Capital Outlay					
51000	Capital outlay	\$ 204,985	\$ 844,062	\$ 979,015	\$ 1,001,800
Capital Outlay Total		\$ 204,985	\$ 844,062	\$ 979,015	\$ 1,001,800
Capital Improvement					
51200	Other improvements	\$ -	\$ 3,058,000	\$ 3,058,000	\$ 33,000
51250	Equipment	927	-	-	400,000
52100	Construction	993,546	-	150,000	4,800,000
52115	Inspection	17,040	-	-	-
53140	Administration costs	1,046	-	-	-
53300	Other expenditures	2,465	-	-	-
59999	Asset capitalization	(3,926,346)	-	-	-
Capital Improvement Total		\$ (2,911,322)	\$ 3,058,000	\$ 3,208,000	\$ 5,233,000
Total		\$ -	\$ 8,602,062	\$ 8,752,062	\$ 11,834,800

Notes:

* The appropriation in this account consists of carryover budget from prior fiscal year; which is not reflected in the revised column. Thus, a reduction adjustment in the budget is resulting in a negative appropriation since the original source is not reflected.

**CITY OF GLENDALE
GLENDALE WATER & POWER DEPARTMENT
WATER CUSTOMER PAID CAPITAL FUND (5950)**

		Actual 2017-18	Adopted 2018-19	Revised 2018-19	Adopted 2019-20
Salaries & Benefits					
41100	Salaries	\$ 167,354	\$ -	\$ -	-
41200	Overtime	23,144	-	-	-
41300	Hourly wages	10,651	-	-	-
Various	Benefits	49,667	-	-	-
42700	PERS retirement	46,446	-	-	-
42701	PERS cost sharing	(6,034)	-	-	-
Salaries & Benefits Total		\$ 291,227	\$ -	\$ -	-
Maintenance & Operation					
43110	Contractual services	\$ 5,243	\$ -	\$ -	\$ 1,500,000
43111	Construction services	104,928	-	-	-
44760	Regulatory	1,499	-	-	-
45350	General supplies	108,397	-	-	-
46011	Liability Insurance	5,440	-	-	-
Maintenance & Operation Total		\$ 225,507	\$ -	\$ -	\$ 1,500,000
Capital Improvement					
51200	Other improvements	\$ -	\$ 1,471,000	\$ 1,471,000	\$ -
52000	Engineering	2,754	-	-	-
52100	Construction	25,750	-	-	-
59999	Asset capitalization	(545,238)	-	-	-
Capital Improvement Total		\$ (516,735)	\$ 1,471,000	\$ 1,471,000	\$ -
Total		\$ -	\$ 1,471,000	\$ 1,471,000	\$ 1,500,000

**CITY OF GLENDALE
 GLENDALE WATER & POWER DEPARTMENT
 WATER CUSTOMER REPAIR FUND (5980)**

		Actual 2017-18	Adopted 2018-19	Revised 2018-19	Adopted 2019-20
Salaries & Benefits					
41100	Salaries	\$ 5,197	\$ -	\$ -	\$ -
41200	Overtime	3,785	-	-	-
41300	Hourly wages	832	-	-	-
Various	Benefits	2,370	-	-	-
42700	PERS retirement	1,586	-	-	-
42701	PERS cost sharing	(186)	-	-	-
Salaries & Benefits Total		\$ 13,584	\$ -	\$ -	\$ -
Maintenance & Operation					
43111	Construction services	\$ 2,550	\$ -	\$ -	\$ -
44760	Regulatory	2,682	-	-	-
45350	General supplies	22,000	100,000	100,000	100,000
46011	Liability Insurance	260	-	-	-
Maintenance & Operation Total		\$ 27,492	\$ 100,000	\$ 100,000	\$ 100,000
Total		\$ 41,076	\$ 100,000	\$ 100,000	\$ 100,000

**CITY OF GLENDALE
GLENDALE WATER & POWER DEPARTMENT
PERSONNEL CLASSIFICATION DETAIL**

Classification	Actual 2017-18	Adopted 2018-19	Revised 2018-19	Adopted 2019-20
<u>Salaried Positions</u>				
Administrative Analyst	-	-	1.00	-
Administrative Assistant	1.00	-	2.00	2.00
Assistant Engineering Technician	2.00	1.00	3.00	3.00
Assistant Environmental Technician	1.00	1.00	1.00	1.00
Assistant General Manager	1.00	1.00	1.00	1.00
Assistant IT Applications Specialist	3.00	3.00	4.00	4.00
Business Account Representative	1.00	-	-	-
Business Transformer & Marketing Administrator	1.00	1.00	1.00	1.00
Chief Assistant General Manager	2.00	-	-	-
Chief Assistant General Manager/Electric	-	-	1.00	1.00
Chief Assistant General Manager/Water	-	-	1.00	1.00
Chief Assistant General Manager/Electric & Power	-	2.00	-	-
Civil Engineer II	2.00	2.00	1.00	2.00
Civil Engineering Assistant	3.00	3.00	2.00	2.00
Civil Engineering Associate	1.00	1.00	2.00	2.00
Community Outreach Assistant	2.00	-	-	-
Community Outreach Associate	-	2.00	2.00	2.00
Customer Service Administrator	1.00	1.00	1.00	1.00
Customer Service Field Supervisor	1.00	1.00	1.00	1.00
Customer Service Field Technician	7.00	7.00	6.00	6.00
Customer Service Operation Manager	2.00	2.00	2.00	2.00
Customer Service Representative	1.00	1.00	1.00	1.00
Customer Service Utility Representative	29.00	29.00	25.00	25.00
Customer Service Utility Supervisor	-	-	2.00	2.00
Deputy Chief Information Officer	1.00	1.00	1.00	1.00
Electrical Engineer I	3.00	4.00	1.00	1.00
Electrical Engineer II	2.00	2.00	2.00	2.00
Electrical Engineering Assistant	-	-	3.00	3.00
Electrical Engineering Associate	5.00	4.00	4.00	4.00
Electrical Helper	3.00	1.00	1.00	1.00
Electrical Line Mechanic	7.00	7.00	7.00	7.00
Electrical Line Mechanic Apprentice	11.00	11.00	11.00	11.00
Electrical Line Mechanic Supervisor I	8.00	8.00	8.00	8.00
Electrical Line Mechanic Supervisor II	3.00	3.00	3.00	3.00
Electrical Mechanic Assistant	3.00	3.00	5.00	5.00
Electrical Services Administrator	1.00	1.00	1.00	1.00
Electrical Service Planner	3.00	3.00	3.00	3.00
Electrical Superintendent-Const, Trans&Di	1.00	1.00	1.00	1.00
Electrical Superintendent-SubMeter&Comm	1.00	1.00	1.00	1.00
Electrical Superintendent	1.00	1.00	1.00	1.00
Electrical System Dispatcher	5.00	5.00	-	-
Electrical System Dispatcher Supervisor	1.00	1.00	-	-
Electrical Test Supervisor	1.00	1.00	1.00	1.00
Electrical Test Technician I	-	-	2.00	1.00
Electrical Test Technician II	8.00	8.00	7.00	8.00
Energy Marketer/Trader	2.00	2.00	1.00	2.00
Energy Trading Manager	1.00	1.00	1.00	1.00
Engineering Aide	2.00	1.00	1.00	1.00
Engineering Technician	4.00	5.00	3.00	3.00
Environmental Program Administrator	1.00	1.00	1.00	1.00
Environmental Program Specialist	1.00	1.00	1.00	1.00
General Manager-GWP	1.00	1.00	1.00	1.00
Human Resources Assistant	0.50	0.50	-	-
Human Resources Associate	-	-	0.50	-

**CITY OF GLENDALE
GLENDALE WATER & POWER DEPARTMENT
PERSONNEL CLASSIFICATION DETAIL**

Classification	Actual 2017-18	Adopted 2018-19	Revised 2018-19	Adopted 2019-20
Information Services Project Manager	-	1.00	-	-
Integrated Resources Plan Administrator	1.00	1.00	1.00	1.00
IT Applications Analyst	-	1.00	1.00	1.00
IT Applications Specialist	1.00	1.00	-	-
Line Clearance Forestry Supervisor I	2.00	2.00	2.00	2.00
Mechanical Engineer I	1.00	1.00	-	-
Mechanical Engineer II	-	-	1.00	1.00
Office Services Specialist II	1.00	1.00	-	-
Office Services Supervisor	2.00	2.00	2.00	2.00
Power Contracts Manager	1.00	1.00	1.00	1.00
Power Line Truck Operator	2.00	2.00	-	-
Power Planning Manager	1.00	1.00	1.00	1.00
Power Plant Control Operator	15.00	15.00	14.00	15.00
Power Plant Control Operator Apprentice	4.00	4.00	5.00	4.00
Power Plant Inst & Cntrl Supervisor	1.00	1.00	1.00	1.00
Power Plant Maintenance Supervisor	1.00	1.00	1.00	1.00
Power Plant Mechanic	4.00	4.00	5.00	4.00
Power Plant Mechanic Apprentice	3.00	4.00	2.00	2.00
Power Plant Mechanic Assistant	1.00	1.00	1.00	1.00
Power Plant Operation Supervisor	1.00	1.00	1.00	1.00
Power Plant Operator	4.00	4.00	4.00	4.00
Power Plant Shift Supervisor	5.00	5.00	5.00	5.00
Power Plant Superintendent	1.00	1.00	1.00	1.00
Power Plant Technician	1.00	1.00	1.00	1.00
Power System Operator I	-	-	4.00	5.00
Power System Operator II	-	-	4.00	4.00
Power System Trainee	-	-	1.00	-
Power Systems Analyst	1.00	1.00	1.00	1.00
Power Systems Associate	1.00	1.00	1.00	1.00
Principal Electrical Engineer	1.00	1.00	1.00	1.00
Principal Engineering Technician	1.00	1.00	1.00	1.00
Principal Power System Operator	-	-	1.00	1.00
Principal Utility Financial Analyst	1.00	1.00	1.00	1.00
Program Supervisor	1.00	1.00	1.00	-
Public Benefits Charge Coordinator	-	1.00	1.00	1.00
Public Benefits Charge Marketing Manager	2.00	2.00	2.00	2.00
Revenue Protection Coordinator	1.00	-	-	-
Safety Services Specialist	1.00	1.00	-	-
Sr. Administrative Analyst	1.00	1.00	-	1.00
Sr. Civil Engineer	2.00	2.00	3.00	2.00
Sr. Customer Service Field Technician	-	-	1.00	1.00
Sr. Customer Service Utility Representative	6.00	6.00	7.00	7.00
Sr. Electrical Engineer	1.00	1.00	-	-
Sr. Electrical Service Planner	3.00	3.00	3.00	3.00
Sr. Electrical System Dispatcher	4.00	4.00	-	-
Sr. Electrical Test Technician	2.00	2.00	2.00	2.00
Sr. Engineering Technician	3.00	2.00	3.00	3.00
Sr. Environmental Program Specialist	1.00	1.00	1.00	1.00
Sr. IT Application Specialist	2.00	1.00	3.00	3.00
Sr. Mechanical Engineer	2.00	2.00	2.00	2.00
Sr. Office Services Specialist	3.00	4.00	3.00	3.00
Sr. Office Specialist	1.00	1.00	2.00	2.00
Sr. Power Plant Mechanic	2.00	2.00	2.00	2.00
Sr. Power Plant Technician	2.00	2.00	2.00	2.00
Sr. Storekeeper	-	-	1.00	1.00

**CITY OF GLENDALE
GLENDALE WATER & POWER DEPARTMENT
PERSONNEL CLASSIFICATION DETAIL**

Classification	Actual 2017-18	Adopted 2018-19	Revised 2018-19	Adopted 2019-20				
Sr. Utility Financial Analyst	1.00	1.00	2.00	1.00				
Sr. Utility Locator	2.00	2.00	1.00	1.00				
Sr. Water Facilities Operator	1.00	1.00	1.00	1.00				
Sr. Water Quality Specialist	1.00	1.00	1.00	1.00				
Sr. Water Quality Technician	1.00	1.00	1.00	1.00				
Sr. Water System Mechanic	5.00	5.00	5.00	5.00				
Station Electrician	1.00	1.00	1.00	1.00				
Station Electrician/Operator	9.00	9.00	8.00	8.00				
Station Electrician/Operator Apprentice	2.00	2.00	2.00	2.00				
Station Electrician/Operator Supervisor I	4.00	4.00	4.00	4.00				
Station Electrician/Operator Supervisor II	1.00	1.00	1.00	1.00				
Station Electrician Supervisor I	1.00	1.00	1.00	1.00				
Storekeeper	3.00	3.00	2.00	2.00				
Stores Supervisor	2.00	1.00	1.00	1.00				
Supervising Electrical Engineering Associate	-	-	1.00	1.00				
Systems Analyst	1.00	-	1.00	1.00				
Transformer Shop Technician	1.00	1.00	1.00	1.00				
Underground Distribution Construction Mechanic I	4.00	4.00	3.00	4.00				
Underground Distribution Construction Mechanic II	1.00	1.00	1.00	1.00				
Underground Distribution Construction Supervisor I	-	-	1.00	-				
Utility Building Repairer	1.00	1.00	1.00	1.00				
Utility Business System Supp Manager	1.00	1.00	1.00	1.00				
Utility Construction Inspector	2.00	2.00	2.00	2.00				
Utility Equipment Operator II	-	-	1.00	1.00				
Utility Financial Analyst	1.00	1.00	-	-				
Utility Locator	-	-	1.00	1.00				
Utility Manager	2.00	2.00	2.00	2.00				
Utility Risk Manager	1.00	-	-	-				
Utility Safety Officer	-	-	1.00	1.00				
Utility Welder	2.00	2.00	2.00	2.00				
Water Facilities Operator	3.00	2.00	3.00	3.00				
Water Facilities Supervisor	1.00	1.00	1.00	1.00				
Water Meter Repairer	1.00	1.00	1.00	1.00				
Water Quality Manager	1.00	1.00	1.00	1.00				
Water Quality Specialist	1.00	1.00	1.00	1.00				
Water Quality Supervisor	1.00	1.00	1.00	1.00				
Water Quality Technician	3.00	4.00	3.00	3.00				
Water Services Administrator	1.00	1.00	1.00	1.00				
Water Superintendent	2.00	2.00	2.00	2.00				
Water System Apprentice	1.00	1.00	2.00	2.00				
Water System Equipment Operator	4.00	4.00	3.00	3.00				
Water System Helper	5.00	5.00	6.00	5.00				
Water System Mechanic	6.00	6.00	3.00	4.00				
Water System Operations Supervisor	2.00	2.00	2.00	2.00				
Water System Supervisor I	-	-	1.00	1.00				
Water System Supervisor II	5.00	5.00	4.00	4.00				
Total Salaried Positions	<u>327.50</u>	<u>321.50</u>	<u>321.50</u>	<u>319.00</u>				
<u>Hourly Positions</u>								
City Resource Specialist	0.98	(3)	0.34	(1)	0.34	(1)	0.34	(1)
Customer Service Utility Representative	1.20	(2)	1.20	(2)	1.20	(2)	0.92	(2)
Electrical Helper	4.21	(7)	3.61	(6)	3.61	(6)	7.14	(12)
Engineering Aide	-	-	-	-	-	-	3.00	(3)
Hourly City Worker	7.61	(13)	15.60	(20)	15.60	(20)	12.35	(18)
Line Clearance Forestry Supervisor I	0.46	(1)	-	-	-	-	-	-

**CITY OF GLENDALE
 GLENDALE WATER & POWER DEPARTMENT
 PERSONNEL CLASSIFICATION DETAIL**

Classification	Actual 2017-18		Adopted 2018-19		Revised 2018-19		Adopted 2019-20	
Mechanical Engineering Assistant	-		0.75	(1)	0.75	(1)	1.00	(1)
Office Service Specialist	-		0.75	(1)	0.75	(1)	-	
Stores Clerk	1.20	(2)	1.20	(2)	1.20	(2)	-	
Water System Helper	0.60	(1)	0.60	(1)	0.60	(1)	1.44	(2)
Water System Supervisor II	-		-		-		-	
Total Hourly FTE Positions	<u>16.26</u>		<u>24.05</u>		<u>24.05</u>		<u>26.19</u>	
Glendale Water & Power Total	<u><u>343.76</u></u>		<u><u>345.55</u></u>		<u><u>345.55</u></u>		<u><u>345.19</u></u>	

Notes:

* Indicates number of employees corresponding to the stated Full-Time Equivalence (FTE).