



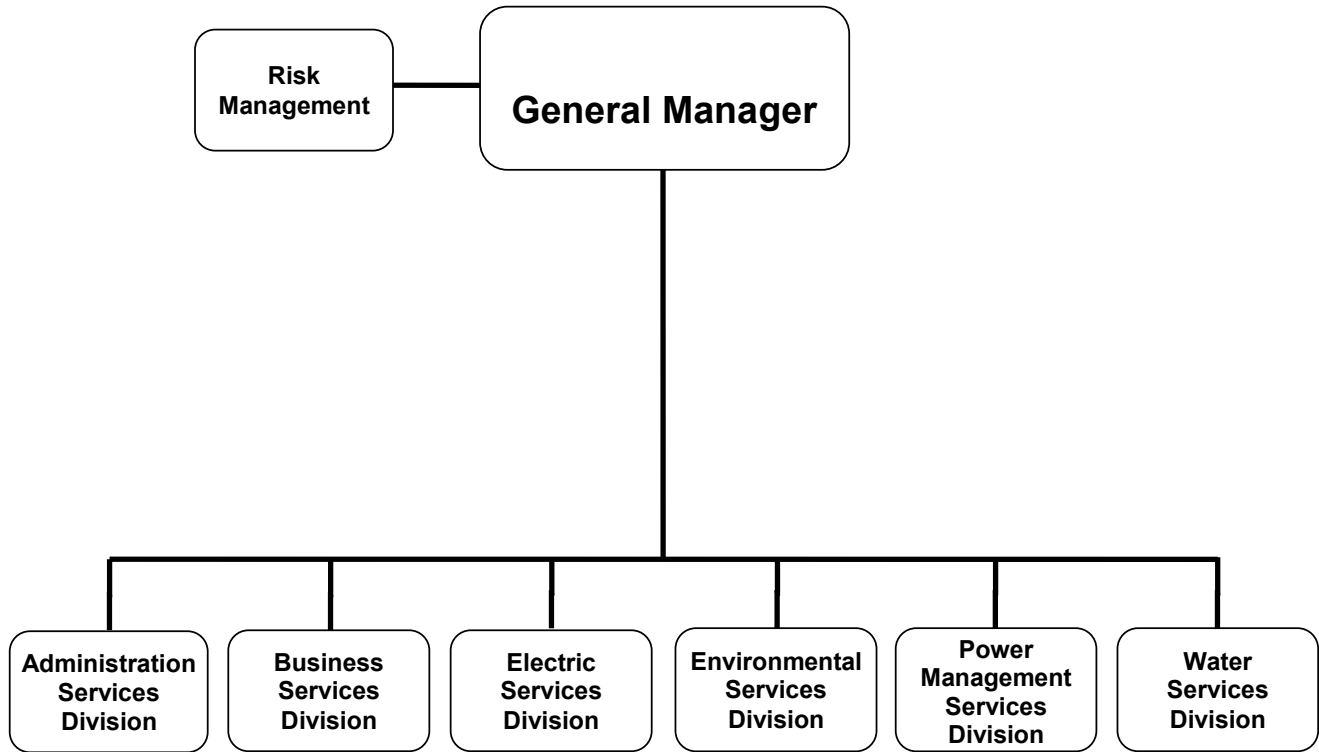
ADOPTED BUDGET

GLENDALE WATER
& POWER

FY 2020-2021



GLENDALE WATER & POWER



CITY OF GLENDALE

GLENDALE WATER & POWER

MISSION STATEMENT

Glendale Water & Power's (GWP) mission is to cost effectively provide its customers with safe, efficient, reliable and sustainable water and power services. This mission is accomplished through the prudent use of resources, technology, innovation, teamwork and planning to ensure sufficient supply for today and into the future.

DEPARTMENT DESCRIPTION

GWP consists of six divisions:

- Administrative Services Division
- Business Services Division
- Electric Services Division
- Environmental Sustainability Services Division
- Power Management Services Division
- Water Services Division

The focus of these divisions is to ensure that the City is served well today, and is poised to meet future challenges. The key components in Glendale Water & Power's operation include:

Electric Services – Provide safe, reliable and efficient electric service by maintaining and making continuous improvements in the power delivery system.

Power Management Services – Ensure reliable power supply under severe legislative regulatory controls and restrictions through a portfolio of resources.

Water Services - Provide safe and reliable water services that meet or exceed regulatory water quality requirements while optimizing the local production of water resources including water recycling, while efficiently pumping and storing water to minimize energy use.

Customer Service - Achieve high customer satisfaction levels by increasing the value of the programs and services GWP offers and working to continuously provide information to customers on how they can make informed decisions on water and energy use.

Rates - Achieve water and electric rates that will support the infrastructure needs and are appropriate for the level of service provided.

Infrastructure - Assure high service reliability by continuously improving and maintaining the GWP physical plant, electric and water facilities.

Work Force – Through succession planning, develop, retain and promote a safe, highly skilled, dedicated, and customer-focused work force.

Utility Modernization – Continuously develop and improve programs, systems and technologies to reduce GWP's costs while enhancing customer communications and increasing operational effectiveness.

Legislation & Regulation – Monitor, participate, and influence local, state, and federal legislation and regulations to provide the most benefit to Glendale Water & Power's customers.

Safety – Provide a safe environment for our staff and the community.

CITY OF GLENDALE

GLENDALE WATER & POWER

RELATIONSHIP TO CITY COUNCIL PRIORITIES

Exceptional Customer Service

Glendale Water & Power is committed to providing its residents with extraordinary customer service centered on the principles of integrity, quality, and customer satisfaction through the reliable and efficient delivery of energy and water services to every customer served. This includes ensuring minimal service disruptions to the extent possible, establishing reasonable utility rates, providing reliable resources and responding to customer inquiries in a prompt and professional manner.

Environmental Sustainability

Glendale Water and Power is constantly looking for ways to minimize environmental impacts and promote sustainable water and power resources. GWP's Water Division is committed to using more local sources of water and reducing the amount of imported water in its portfolio. The Water Division has been a pioneer in the use of recycled water since 1978 -one of the first in California. As part of our electrification efforts, GWP has installed numerous public EV chargers throughout Glendale. GWP plans to expand Glendale's EV infrastructure in the near future with even more public chargers. Also, GWP has been utilizing the City's landfill gas as a renewable energy source for over 20 years, which has resulted in the added benefit of creating fewer greenhouse gas emissions from the landfill.

Economic Vibrancy

Glendale Water & Power is committed to providing its customers with reliable and sustainable water and power services that are cost effective and innovative. This year GWP launched a new marketplace for customers to purchase discounted energy efficiency/water conservation merchandise and smart home energy devices. Customers can browse through and purchase a variety of products that will help them save money and use water and energy wisely.

Informed & Engaged Community

Glendale Water & Power pro-actively shares information and engages the community regarding important issues via multiple communication platforms. This year, GWP hosted its first ever Tailgate event where guests had the opportunity to visit GWP Department and Program booths to learn about and sign-up for customer programs and services. GWP also held the Annual Utility Day with tours of our plant and facilities, as well as electric and water displays. Through these types of events, GWP continues to educate customers and provide them with tools and information about our reliable, sustainable and innovative services.

Infrastructure & Mobility

GWP strives to continue providing reliable services by:

- Implementation of the 10 Year Water Capital Improvement Program in a manner consistent with long term Water Master Plan to upgrade aging infrastructure while reflecting the ongoing financial, environmental and organizational challenges that utilities continue to face.
- Delivering and serving water that meets all federal, state and local drinking water standards.
- Developing an Electric System Master Plan by conducting system-wide inspections of all transmission and distribution assets, and provide guidelines for planning Capital Improvement projects for future system upgrades and modifications.

**CITY OF GLENDALE
SUMMARY OF APPROPRIATIONS
GLENDALE WATER & POWER DEPARTMENT
FOR THE YEARS ENDING JUNE 30**

	Actual 2018-19	Adopted 2019-20	Revised 2019-20	Adopted 2020-21
Electric Public Benefit Fund				
Electric Public Benefit Fund (2910)	\$ 6,177,415	\$ 9,016,367	\$ 9,016,367	\$ 8,794,842
Total Electric Public Benefits Fund	\$ 6,177,415	\$ 9,016,367	\$ 9,016,367	\$ 8,794,842
Fiber Optic Fund				
Fiber Optic Fund (5400)	\$ -	\$ 220,313	\$ 220,313	\$ 155,800
Total Fiber Optic Fund	\$ -	\$ 220,313	\$ 220,313	\$ 155,800
Electric Utility				
Electric Surplus Fund (5810)	\$ 19,021,674	\$ -	\$ 1,000,000	\$ -
Electric Works Revenue Fund				
Administration (5820-4505)	\$ 47,196,410	\$ 66,579,334	\$ 66,579,334	\$ 60,534,051
Customer Service (5820-4509)	6,666,954	7,988,068	7,988,068	7,685,691
Consrv & Utility Mod (5820-4520)	2,433,765	1,011,459	1,011,459	2,318,599
Business System Support (5820-4521)	-	3,209,904	3,209,904	3,137,977
Utility Finance (5820-4530)	296,543	606,163	606,163	672,772
Environmental & Safety (5820-4540)	616,266	939,453	939,453	938,436
UOC & Warehouse (5820-4550)	988,179	1,403,618	1,403,618	1,088,334
Yard (5820-4560)	132,824	197,900	197,900	196,980
Engineering (5820-4600)	3,804,179	4,261,908	4,261,908	2,761,574
Customer Support (5820-4610)	1,000,139	1,138,248	1,138,248	1,155,750
Street Light (5820-4620)	599,653	593,071	593,071	418,879
Howard Substation (5820-4630)	2,289,543	2,646,570	2,646,570	2,482,177
Meter & Test Shop (5820-4640)	1,826,784	1,792,378	1,792,378	1,782,826
Station Maint (5820-4650)	3,291,358	3,993,284	3,993,284	3,674,727
Overhead & Underground (5820-4660)	7,462,020	9,620,449	10,498,961	7,460,823
Substructure (5820-4670)	521,109	859,258	859,258	488,732
Power Management (5820-4680)	107,534,408	147,807,938	147,807,938	136,764,022
Power Plant (5820-4690)	9,925,417	13,284,671	13,284,671	12,948,405
Total Electric Works Revenue Fund	\$ 196,585,551	\$ 267,933,674	\$ 268,812,186	\$ 246,510,755
Electric Depreciation Fund (5830)	\$ -	\$ 21,086,300	\$ 24,859,800	\$ 8,095,348
Electric Customer Paid Capital Fund (5850)	-	2,000,000	2,000,000	2,000,000
Energy Cost Adjustment Charge Fund (5860)	9,128,734	-	-	-
Regulatory Adjustment Charge Fund (5870)	88,587	-	-	-
Electric Customer Repair Fund (5880)	-	50,000	50,000	50,000
Total Electric Utility	\$ 224,824,546	\$ 291,069,974	\$ 296,721,986	\$ 256,656,103

**CITY OF GLENDALE
SUMMARY OF APPROPRIATIONS
GLENDALE WATER & POWER DEPARTMENT
FOR THE YEARS ENDING JUNE 30**

	Actual 2018-19	Adopted 2019-20	Revised 2019-20	Adopted 2020-21
<u>Water Utility</u>				
Water Works Revenue Fund				
Administration (5920-4505)	\$ 18,563,175	\$ 17,139,161	\$ 17,139,161	\$ 15,967,496
Customer Service (5920-4509)	2,042,377	2,494,304	2,494,304	2,356,608
Consrv & Utility Mod (5920-4520)	759,926	450,107	450,107	454,704
Business System Support (5920-4521)	-	831,341	831,341	768,910
Utility Finance (5920-4530)	83,640	170,590	170,590	187,872
Environmental & Safety (5920-4540)	164,626	235,556	235,556	241,429
UOC & Warehouse (5920-4550)	306,385	395,777	395,777	315,163
Yard (5920-4560)	37,303	55,846	55,846	59,491
Engineering (5920-4700)	18,619,592	25,953,046	25,953,046	26,163,399
Water Distribution (5920-4710)	3,113,275	3,761,882	3,761,882	3,646,448
Operation (5920-4720)	5,439,944	3,080,118	3,080,118	3,086,680
Water Quality (5920-4730)	1,463,671	1,895,057	1,895,057	1,796,306
Total Water Works Revenue Fund	\$ 50,593,912	\$ 56,462,785	\$ 56,462,785	\$ 55,044,506
Water Depreciation Fund (5930)	\$ -	\$ 11,834,800	\$ 11,834,800	\$ 6,923,752
Water Customer Paid Capital Fund (5950)	-	1,500,000	1,500,000	1,275,000
Water Customer Repair Fund (5980)	22,198	100,000	100,000	100,000
Total Water Utility	\$ 50,616,111	\$ 69,897,585	\$ 69,897,585	\$ 63,343,258
Department Grand Total	\$ 281,618,072	\$ 370,204,239	\$ 375,856,251	\$ 328,950,003

**CITY OF GLENDALE
GLENDALE WATER & POWER DEPARTMENT
ELECTRIC PUBLIC BENEFIT FUND (2910)**

		Actual 2018-19	Adopted 2019-20	Revised 2019-20	Adopted 2020-21
Salaries & Benefits					
41100	Salaries	\$ 394,155	\$ 283,654	\$ 283,654	\$ 359,790
41200	Overtime	2,455	10,150	10,150	-
41300	Hourly wages	93,824	72,845	72,845	36,216
Various	Benefits	111,695	88,559	88,559	102,920
42700	PERS retirement	141,847	119,652	119,652	129,685
42701	PERS cost sharing	(19,322)	(14,075)	(14,075)	(14,208)
Salaries & Benefits Total		\$ 724,654	\$ 560,785	\$ 560,785	\$ 614,403
Maintenance & Operation					
43110	Contractual services	\$ 1,930,886	\$ 3,824,000	\$ 3,824,000	\$ 3,516,000
44450	Postage	4,257	5,000	5,000	5,000
44550	Travel	2,864	3,300	3,300	5,000
44650	Training	64	1,500	1,500	1,500
45250	Office supplies	-	2,000	2,000	2,000
45512	Public benefit programs	2,928,672	4,214,000	4,214,000	4,214,000
45513	Public benefit programs-Tax	173,389	-	-	-
45680	Uncollectible accounts	(400)	-	-	-
45681	Business meetings	-	1,000	1,000	1,000
45682	Miscellaneous	55	15,000	15,000	15,000
46007	Cost allocation charge	95,181	87,172	87,172	108,533
46009	ISD service charge	35,929	32,629	32,629	40,601
46010	Building maint service charge	37,359	27,030	27,030	24,753
46011	Liability Insurance	17,128	15,573	15,573	19,674
46013	GWP Municipal Billing	227,378	227,378	227,378	227,378
Maintenance & Operation Total		\$ 5,452,761	\$ 8,455,582	\$ 8,455,582	\$ 8,180,439
Total		\$ 6,177,415	\$ 9,016,367	\$ 9,016,367	\$ 8,794,842

**CITY OF GLENDALE
GLENDALE WATER & POWER DEPARTMENT
FIBER OPTIC FUND (5400)**

		Actual 2018-19	Adopted 2019-20	Revised 2019-20	Adopted 2020-21
Salaries & Benefits					
41100	Salaries	\$ -	\$ 46,001	\$ 46,001	\$ 190,118
41300	Hourly wages	-	53,284	53,284	-
Various	Benefits	-	15,315	15,315	22,539
42700	PERS retirement	-	15,517	15,517	46,600
42701	PERS cost sharing	-	(1,825)	(1,825)	(5,108)
42799	Salary charges in (out)	-	-	-	(192,500)
Salaries & Benefits Total		\$ -	\$ 128,292	\$ 128,292	\$ 61,649
Maintenance & Operation					
43110	Contractual services	\$ -	\$ 77,800	\$ 77,800	\$ 77,800
45350	General supplies	-	10,000	10,000	10,000
46011	Liability Insurance	-	4,221	4,221	6,351
Maintenance & Operation Total		\$ -	\$ 92,021	\$ 92,021	\$ 94,151
Total		\$ -	\$ 220,313	\$ 220,313	\$ 155,800

**CITY OF GLENDALE
 GLENDALE WATER & POWER DEPARTMENT
 ELECTRIC SURPLUS FUND (5810)**

	Actual 2018-19	Adopted 2019-20	Revised 2019-20	Adopted 2020-21
Transfers				
48010 Transfer to general fund	\$ 19,021,674	\$ -	\$ -	-
48080 Capital contributions	-	-	1,000,000	-
Transfers Total	\$ 19,021,674	\$ -	\$ 1,000,000	\$ -
Total	\$ 19,021,674	\$ -	\$ 1,000,000	\$ -

**CITY OF GLENDALE
GLENDALE WATER & POWER DEPARTMENT
ELECTRIC WORKS REVENUE FUND - ADMINISTRATION
(5820-4505)**

		Actual 2018-19	Adopted 2019-20	Revised 2019-20	Adopted 2020-21
Salaries & Benefits					
41100	Salaries	\$ 844,264	\$ 692,705	\$ 692,705	\$ 706,373
41200	Overtime	3,818	8,000	8,000	-
Various	Benefits	182,640	143,147	143,147	130,847
42700	PERS retirement	3,030,328	229,140	229,140	255,479
42701	PERS cost sharing	(33,428)	(26,956)	(26,956)	(27,996)
Salaries & Benefits Total		\$ 4,027,622	\$ 1,046,036	\$ 1,046,036	\$ 1,064,703
Maintenance & Operation					
43110	Contractual services	\$ 180,422	\$ 471,517	\$ 471,517	\$ 549,517
44120	Repairs to office equipment	-	1,482	1,482	-
44200	Advertising	872	-	-	-
44450	Postage	382	702	702	1,000
44550	Travel	19,898	15,600	15,600	25,000
44650	Training	4,504	3,900	3,900	-
44700	Computer software	1,488	-	-	-
44760	Regulatory	10,435	15,600	15,600	20,000
44800	Membership and dues	166,280	1,326	1,326	90,000
45050	Periodicals and newspapers	87	1,513	1,513	500
45100	Books	20	-	-	-
45150	Furniture and equipment	1,694	-	-	-
45250	Office supplies	10,908	28,080	28,080	15,000
45350	General supplies	11,931	50,700	50,700	5,000
45450	Printing and graphics	-	12,090	12,090	5,000
45681	Business meetings	10,703	5,070	5,070	5,000
45682	Miscellaneous	8,441	17,004	17,004	15,000
46000	Depreciation	24,844,749	25,780,641	25,780,641	23,204,767
46002	Amortization expense	-	-	-	73,864
46005	Utilities	33,471	57,500	57,500	39,000
46007	Cost allocation charge	5,444,511	5,608,416	5,608,416	5,325,996
46008	Fleet equipment rental charge	1,063,959	1,063,959	1,063,959	977,876
46009	ISD service charge	2,895,890	2,850,319	2,850,319	2,991,866
46010	Building maint service charge	1,827,770	1,623,843	1,623,843	1,543,182
46011	Liability Insurance	29,575	29,291	29,291	35,098
46012	Excess insurance and surety	385,795	417,690	417,690	491,494
47050	Interest on bonds	6,215,004	7,200,000	7,200,000	6,610,847
Maintenance & Operation Total		\$ 43,168,788	\$ 45,256,243	\$ 45,256,243	\$ 42,025,007
Transfers					
48010	Transfer to general fund	\$ -	\$ 20,277,055	\$ 20,277,055	\$ 17,444,341
Transfers Total		\$ -	\$ 20,277,055	\$ 20,277,055	\$ 17,444,341
Total		\$ 47,196,410	\$ 66,579,334	\$ 66,579,334	\$ 60,534,051

**CITY OF GLENDALE
 GLENDALE WATER & POWER DEPARTMENT
 ELECTRIC WORKS REVENUE FUND - CUSTOMER SERVICE
 (5820-4509)**

		Actual 2018-19	Adopted 2019-20	Revised 2019-20	Adopted 2020-21
Salaries & Benefits					
41100	Salaries	\$ 2,664,090	\$ 2,907,616	\$ 2,907,616	\$ 2,808,371
41200	Overtime	45,906	38,000	38,000	38,000
41300	Hourly wages	27,262	35,152	35,152	29,200
Various	Benefits	597,709	666,900	666,900	623,627
42700	PERS retirement	779,068	984,897	984,897	1,018,305
42701	PERS cost sharing	(106,259)	(115,860)	(115,860)	(111,573)
Salaries & Benefits Total		\$ 4,007,776	\$ 4,516,705	\$ 4,516,705	\$ 4,405,930
Maintenance & Operation					
43110	Contractual services	\$ 779,672	\$ 1,527,068	\$ 1,527,068	\$ 1,137,948
44450	Postage	8,102	12,160	12,160	12,000
44550	Travel	1,665	10,032	10,032	8,000
44650	Training	3,409	9,956	9,956	10,000
44760	Regulatory	13	-	-	-
44800	Membership and dues	490	532	532	550
45150	Furniture and equipment	9,917	17,936	17,936	9,500
45250	Office supplies	10,910	12,768	12,768	15,000
45300	Small tools	-	2,052	2,052	-
45350	General supplies	2,050	3,040	3,040	2,000
45512	Public benefit programs	581	-	-	-
45680	Uncollectible accounts	342,105	300,000	300,000	300,000
45681	Business meetings	-	1,140	1,140	1,000
45682	Miscellaneous	23	988	988	1,500
46007	Cost allocation charge	478,539	531,075	531,075	590,657
46008	Fleet equipment rental charge	49,544	49,544	49,544	32,510
46009	ISD service charge	537,454	551,984	551,984	579,396
46010	Building maint service charge	339,219	314,469	314,469	436,839
46011	Liability Insurance	95,486	126,619	126,619	142,861
Maintenance & Operation Total		\$ 2,659,178	\$ 3,471,363	\$ 3,471,363	\$ 3,279,761
Total		\$ 6,666,954	\$ 7,988,068	\$ 7,988,068	\$ 7,685,691

**CITY OF GLENDALE
GLENDALE WATER & POWER DEPARTMENT
ELECTRIC WORKS REVENUE FUND - CONSERVATION & UTILITY MODERNIZATION
(5820-4520)**

		Actual 2018-19	Adopted 2019-20	Revised 2019-20	Adopted 2020-21
Salaries & Benefits					
41100	Salaries	\$ 360,779	\$ 378,349	\$ 378,349	\$ 338,994
41200	Overtime	5,166	26,000	26,000	-
41300	Hourly wages	-	73,994	73,994	-
Various	Benefits	91,981	94,905	94,905	58,763
42700	PERS retirement	105,847	139,451	139,451	122,433
42701	PERS cost sharing	(14,411)	(16,406)	(16,406)	(13,417)
Salaries & Benefits Total		\$ 549,362	\$ 696,293	\$ 696,293	\$ 506,773
Maintenance & Operation					
43110	Contractual services	\$ 1,618,282	\$ 152,880	\$ 152,880	\$ 187,980
44100	Repairs to equipment	13,260	-	-	-
44200	Advertising	3,866	11,232	11,232	11,500
44450	Postage	29,743	102,960	102,960	75,000
44550	Travel	8,546	2,028	2,028	2,000
44600	Laundry and towel service	160	-	-	-
44650	Training	26,562	4,680	4,680	2,500
44700	Computer software	13,735	-	-	-
44800	Membership and dues	10,498	546	546	2,000
45050	Periodicals and newspapers	-	468	468	-
45150	Furniture and equipment	23,955	936	936	1,500
45170	Computer hardware	30,561	-	-	-
45250	Office supplies	19,667	1,950	1,950	4,000
45350	General supplies	12,901	1,950	1,950	10,000
45450	Printing and graphics	18,012	15,132	15,132	50,000
45512	Public benefit programs	(1)	-	-	-
45514	Low carbon fuel std programs	-	-	-	1,420,000
45681	Business meetings	502	546	546	1,000
45682	Miscellaneous	41,457	1,170	1,170	27,500
46011	Liability Insurance	12,700	18,688	18,688	16,846
Maintenance & Operation Total		\$ 1,884,403	\$ 315,166	\$ 315,166	\$ 1,811,826
Total		\$ 2,433,765	\$ 1,011,459	\$ 1,011,459	\$ 2,318,599

**CITY OF GLENDALE
 GLENDALE WATER & POWER DEPARTMENT
 ELECTRIC WORKS REVENUE FUND - BUSINESS SYSTEM SUPPORT
 (5820-4521)**

		Actual 2018-19	Adopted 2019-20	Revised 2019-20	Adopted 2020-21
Salaries & Benefits					
41100	Salaries	\$ -	\$ 166,631	\$ 166,631	\$ 175,800
41200	Overtime	-	-	-	26,000
41300	Hourly wages	-	38,625	38,625	-
Various	Benefits	-	39,301	39,301	38,661
42700	PERS retirement	-	56,024	56,024	63,402
42701	PERS cost sharing	-	(6,594)	(6,594)	(6,951)
Salaries & Benefits Total		\$ -	\$ 293,987	\$ 293,987	\$ 296,912
Maintenance & Operation					
43110	Contractual services	\$ -	\$ 2,647,477	\$ 2,647,477	\$ 2,681,977
44120	Repairs to office equipment	-	13,494	13,494	12,000
44450	Postage	-	750	750	750
44550	Travel	-	14,196	14,196	14,000
44650	Training	-	17,550	17,550	18,000
44800	Membership and dues	-	1,560	1,560	1,500
45150	Furniture and equipment	-	101,400	101,400	40,000
45170	Computer hardware	-	75,738	75,738	30,000
45250	Office supplies	-	3,120	3,120	3,000
45350	General supplies	-	14,040	14,040	14,000
45681	Business meetings	-	780	780	800
45682	Miscellaneous	-	18,720	18,720	15,000
46011	Liability Insurance	-	7,092	7,092	10,038
Maintenance & Operation Total		\$ -	\$ 2,915,917	\$ 2,915,917	\$ 2,841,065
Total		\$ -	\$ 3,209,904	\$ 3,209,904	\$ 3,137,977

**CITY OF GLENDALE
 GLENDALE WATER & POWER DEPARTMENT
 ELECTRIC WORKS REVENUE FUND - UTILITY FINANCE
 (5820-4530)**

		Actual 2018-19	Adopted 2019-20	Revised 2019-20	Adopted 2020-21
Salaries & Benefits					
41100	Salaries	\$ 190,485	\$ 380,477	\$ 380,477	\$ 418,294
41200	Overtime	204	-	-	-
Various	Benefits	51,748	96,635	96,635	99,206
42700	PERS retirement	55,003	127,931	127,931	151,035
42701	PERS cost sharing	(7,560)	(15,050)	(15,050)	(16,552)
Salaries & Benefits Total		\$ 289,879	\$ 589,993	\$ 589,993	\$ 651,983
Maintenance & Operation					
46011	Liability Insurance	\$ 6,664	\$ 16,170	\$ 16,170	\$ 20,789
Maintenance & Operation Total		\$ 6,664	\$ 16,170	\$ 16,170	\$ 20,789
Total		\$ 296,543	\$ 606,163	\$ 606,163	\$ 672,772

**CITY OF GLENDALE
 GLENDALE WATER & POWER DEPARTMENT
 ELECTRIC WORKS REVENUE FUND - ENVIRONMENTAL & SAFETY
 (5820-4540)**

		Actual 2018-19	Adopted 2019-20	Revised 2019-20	Adopted 2020-21
Salaries & Benefits					
41100	Salaries	\$ 379,241	\$ 388,919	\$ 388,919	\$ 393,073
41200	Overtime	-	4,000	4,000	4,000
Various	Benefits	64,395	67,373	67,373	57,181
42700	PERS retirement	109,959	130,557	130,557	141,673
42701	PERS cost sharing	(14,991)	(15,359)	(15,359)	(15,525)
Salaries & Benefits Total		\$ 538,604	\$ 575,490	\$ 575,490	\$ 580,402
Maintenance & Operation					
43110	Contractual services	\$ 13,190	\$ 179,100	\$ 179,100	\$ 199,800
44450	Postage	5	-	-	-
44550	Travel	356	7,176	7,176	5,000
44650	Training	6,391	50,700	50,700	40,000
44760	Regulatory	5,192	-	-	40,000
44800	Membership and dues	632	1,794	1,794	1,500
45050	Periodicals and newspapers	-	78	78	-
45100	Books	-	858	858	-
45150	Furniture and equipment	-	390	390	-
45350	General supplies	21,480	54,600	54,600	25,000
45400	Reports and publications	-	234	234	-
45450	Printing and graphics	-	390	390	-
45681	Business meetings	421	936	936	2,000
45682	Miscellaneous	16,731	51,012	51,012	25,000
46011	Liability Insurance	13,264	16,695	16,695	19,734
Maintenance & Operation Total		\$ 77,662	\$ 363,963	\$ 363,963	\$ 358,034
Total		\$ 616,266	\$ 939,453	\$ 939,453	\$ 938,436

**CITY OF GLENDALE
 GLENDALE WATER & POWER DEPARTMENT
 ELECTRIC WORKS REVENUE FUND - UOC & WAREHOUSE
 (5820-4550)**

		Actual 2018-19	Adopted 2019-20	Revised 2019-20	Adopted 2020-21
Salaries & Benefits					
41100	Salaries	\$ 181,838	\$ 236,429	\$ 236,429	\$ 199,780
41200	Overtime	11,221	8,000	8,000	8,000
41300	Hourly wages	102	19,344	19,344	30,334
Various	Benefits	69,084	92,525	92,525	62,702
42700	PERS retirement	52,899	86,082	86,082	82,624
42701	PERS cost sharing	(7,197)	(10,128)	(10,128)	(9,056)
Salaries & Benefits Total		\$ 307,946	\$ 432,252	\$ 432,252	\$ 374,384
Maintenance & Operation					
43050	Repairs buildings and grounds	\$ 1,534	\$ 101,400	\$ 101,400	\$ 25,000
43070	Lease payments	43,503	44,850	44,850	45,000
43110	Contractual services	202,029	216,834	216,834	224,718
44450	Postage	80	-	-	-
44600	Laundry and towel service	2,783	20,514	20,514	5,000
44650	Training	259	-	-	-
45150	Furniture and equipment	-	2,340	2,340	2,000
45250	Office supplies	2,602	4,056	4,056	4,000
45300	Small tools	-	1,014	1,014	1,000
45350	General supplies	21,739	10,920	10,920	30,000
45620	Materials overhead	75,531	-	-	-
45681	Business meetings	-	390	390	400
45682	Miscellaneous	5,642	26,520	26,520	5,000
45684	Discount earned and lost	-	151,320	151,320	-
46005	Utilities	317,801	380,000	380,000	360,000
46011	Liability Insurance	6,730	11,208	11,208	11,832
Maintenance & Operation Total		\$ 680,232	\$ 971,366	\$ 971,366	\$ 713,950
Total		\$ 988,179	\$ 1,403,618	\$ 1,403,618	\$ 1,088,334

**CITY OF GLENDALE
 GLENDALE WATER & POWER DEPARTMENT
 ELECTRIC WORKS REVENUE FUND - YARD
 (5820-4560)**

		Actual 2018-19	Adopted 2019-20	Revised 2019-20	Adopted 2020-21
Salaries & Benefits					
41100	Salaries	\$ 56,564	\$ 88,863	\$ 88,863	\$ 88,739
41200	Overtime	242	-	-	-
41300	Hourly wages	25,283	32,919	32,919	24,528
Various	Benefits	19,197	32,424	32,424	29,731
42700	PERS retirement	23,666	39,234	39,234	40,828
42701	PERS cost sharing	(3,227)	(4,616)	(4,616)	(4,475)
Salaries & Benefits Total		\$ 121,725	\$ 188,824	\$ 188,824	\$ 179,351
Maintenance & Operation					
45150	Furniture and equipment	\$ 38	\$ -	\$ -	\$ -
45250	Office supplies	8,068	3,900	3,900	12,000
45350	General supplies	103	-	-	-
45450	Printing and graphics	27	-	-	-
46011	Liability Insurance	2,862	5,176	5,176	5,629
Maintenance & Operation Total		\$ 11,099	\$ 9,076	\$ 9,076	\$ 17,629
Total		\$ 132,824	\$ 197,900	\$ 197,900	\$ 196,980

**CITY OF GLENDALE
 GLENDALE WATER & POWER DEPARTMENT
 ELECTRIC WORKS REVENUE FUND - ENGINEERING
 (5820-4600)**

		Actual 2018-19	Adopted 2019-20	Revised 2019-20	Adopted 2020-21
Salaries & Benefits					
41100	Salaries	\$ 1,892,777	\$ 2,383,912	\$ 2,383,912	\$ 2,410,171
41200	Overtime	11,720	140,000	140,000	140,000
41300	Hourly wages	107,740	159,494	159,494	82,104
Various	Benefits	329,218	446,049	446,049	343,614
42700	PERS retirement	573,361	854,668	854,668	883,377
42701	PERS cost sharing	(78,088)	(100,559)	(100,559)	(96,820)
42799	Salary charges in (out)	-	(340,000)	(340,000)	(1,798,450)
Salaries & Benefits Total		\$ 2,836,729	\$ 3,543,564	\$ 3,543,564	\$ 1,963,996
Maintenance & Operation					
43110	Contractual services	\$ 748,129	\$ 372,000	\$ 372,000	\$ 456,000
44250	Data communication	145	-	-	-
44550	Travel	4,521	5,000	5,000	39,000
44650	Training	15,772	15,000	15,000	34,000
44700	Computer software	2,340	-	-	-
44760	Regulatory	469	-	-	-
44800	Membership and dues	345	66,000	66,000	-
45150	Furniture and equipment	371	2,500	2,500	2,500
45250	Office supplies	18,890	25,000	25,000	20,000
45300	Small tools	30	-	-	-
45350	General supplies	14,111	10,000	10,000	10,000
45681	Business meetings	-	5,000	5,000	2,500
45682	Miscellaneous	81,241	95,000	95,000	95,000
46005	Utilities	10,681	9,300	9,300	9,000
46011	Liability Insurance	70,405	113,544	113,544	129,578
Maintenance & Operation Total		\$ 967,450	\$ 718,344	\$ 718,344	\$ 797,578
Total		\$ 3,804,179	\$ 4,261,908	\$ 4,261,908	\$ 2,761,574

**CITY OF GLENDALE
 GLENDALE WATER & POWER DEPARTMENT
 ELECTRIC WORKS REVENUE FUND - CUSTOMER SUPPORT
 (5820-4610)**

		Actual 2018-19	Adopted 2019-20	Revised 2019-20	Adopted 2020-21
Salaries & Benefits					
41100	Salaries	\$ 659,111	\$ 756,798	\$ 756,798	\$ 706,796
41200	Overtime	22,822	55,000	55,000	55,000
Various	Benefits	130,028	161,985	161,985	124,795
42700	PERS retirement	190,159	249,844	249,844	254,149
42701	PERS cost sharing	(25,942)	(29,397)	(29,397)	(27,856)
42799	Salary charges in (out)	-	(95,000)	(95,000)	-
Salaries & Benefits Total		\$ 976,178	\$ 1,099,230	\$ 1,099,230	\$ 1,112,884
Maintenance & Operation					
45350	General supplies	\$ 175	\$ 5,000	\$ 5,000	\$ 5,000
46011	Liability Insurance	23,786	34,018	34,018	37,866
Maintenance & Operation Total		\$ 23,961	\$ 39,018	\$ 39,018	\$ 42,866
Total		\$ 1,000,139	\$ 1,138,248	\$ 1,138,248	\$ 1,155,750

**CITY OF GLENDALE
 GLENDALE WATER & POWER DEPARTMENT
 ELECTRIC WORKS REVENUE FUND - STREET LIGHT
 (5820-4620)**

		Actual 2018-19	Adopted 2019-20	Revised 2019-20	Adopted 2020-21
Salaries & Benefits					
41100	Salaries	\$ 245,749	\$ 265,443	\$ 265,443	\$ 268,018
41200	Overtime	65,147	75,000	75,000	100,000
Various	Benefits	69,671	77,064	77,064	82,184
42700	PERS retirement	69,824	86,097	86,097	96,843
42701	PERS cost sharing	(7,127)	(7,599)	(7,599)	(7,962)
42799	Salary charges in (out)	-	(75,000)	(75,000)	(296,496)
Salaries & Benefits Total		\$ 443,263	\$ 421,005	\$ 421,005	\$ 242,587
Maintenance & Operation					
43050	Repairs buildings and grounds	\$ 8,372	\$ 5,000	\$ 5,000	\$ 5,000
43110	Contractual services	145	-	-	-
45300	Small tools	1,075	2,000	2,000	2,000
45350	General supplies	135,589	150,000	150,000	150,000
45681	Business meetings	382	1,000	1,000	1,000
46011	Liability Insurance	10,826	14,066	14,066	18,292
Maintenance & Operation Total		\$ 156,389	\$ 172,066	\$ 172,066	\$ 176,292
Total		\$ 599,653	\$ 593,071	\$ 593,071	\$ 418,879

**CITY OF GLENDALE
 GLENDALE WATER & POWER DEPARTMENT
 ELECTRIC WORKS REVENUE FUND - HOWARD SUBSTATION
 (5820-4630)**

		Actual 2018-19	Adopted 2019-20	Revised 2019-20	Adopted 2020-21
Salaries & Benefits					
41100	Salaries	\$ 1,073,994	\$ 1,299,090	\$ 1,299,090	\$ 1,189,187
41200	Overtime	430,135	265,000	265,000	326,654
41300	Hourly wages	-	45,386	45,386	-
Various	Benefits	245,877	287,253	287,253	237,000
42700	PERS retirement	324,755	442,666	442,666	430,442
42701	PERS cost sharing	(34,720)	(41,084)	(41,084)	(36,948)
Salaries & Benefits Total		\$ 2,040,041	\$ 2,298,311	\$ 2,298,311	\$ 2,146,335
Maintenance & Operation					
43050	Repairs buildings and grounds	\$ -	\$ 20,000	\$ 20,000	\$ -
44300	Telephone	15,131	15,000	15,000	25,000
44550	Travel	(281)	5,000	5,000	5,000
44650	Training	3,750	15,000	15,000	15,000
45150	Furniture and equipment	1,929	5,000	5,000	3,000
45170	Computer hardware	-	20,000	20,000	10,000
45250	Office supplies	1,164	2,000	2,000	2,000
45350	General supplies	4,007	15,000	15,000	10,000
45681	Business meetings	-	500	500	500
46005	Utilities	171,357	183,700	183,700	190,000
46011	Liability Insurance	52,444	67,059	67,059	75,342
Maintenance & Operation Total		\$ 249,502	\$ 348,259	\$ 348,259	\$ 335,842
Total		\$ 2,289,543	\$ 2,646,570	\$ 2,646,570	\$ 2,482,177

**CITY OF GLENDALE
 GLENDALE WATER & POWER DEPARTMENT
 ELECTRIC WORKS REVENUE FUND - METER & TEST SHOP
 (5820-4640)**

		Actual 2018-19	Adopted 2019-20	Revised 2019-20	Adopted 2020-21
Salaries & Benefits					
41100	Salaries	\$ 1,106,036	\$ 1,192,058	\$ 1,192,058	\$ 1,325,848
41200	Overtime	138,075	95,000	95,000	105,000
Various	Benefits	203,662	217,810	217,810	225,158
42700	PERS retirement	315,289	389,465	389,465	455,237
42701	PERS cost sharing	(33,508)	(35,481)	(35,481)	(38,685)
42799	Salary charges in (out)	-	(198,000)	(198,000)	(466,326)
Salaries & Benefits Total		\$ 1,729,554	\$ 1,660,852	\$ 1,660,852	\$ 1,606,232
Maintenance & Operation					
43110	Contractual services	\$ 7,089	\$ 27,000	\$ 27,000	\$ 27,000
44100	Repairs to equipment	800	2,000	2,000	-
44120	Repairs to office equipment	-	-	-	2,000
44450	Postage	54	-	-	-
44550	Travel	-	12,300	12,300	9,500
44650	Training	7,833	12,000	12,000	20,300
45300	Small tools	3,032	-	-	-
45350	General supplies	35,109	25,000	25,000	50,000
46011	Liability Insurance	43,313	53,226	53,226	67,794
Maintenance & Operation Total		\$ 97,230	\$ 131,526	\$ 131,526	\$ 176,594
Total		\$ 1,826,784	\$ 1,792,378	\$ 1,792,378	\$ 1,782,826

**CITY OF GLENDALE
 GLENDALE WATER & POWER DEPARTMENT
 ELECTRIC WORKS REVENUE FUND - STATION MAINTENANCE
 (5820-4650)**

		Actual 2018-19	Adopted 2019-20	Revised 2019-20	Adopted 2020-21
Salaries & Benefits					
41100	Salaries	\$ 1,772,885	\$ 2,055,482	\$ 2,055,482	\$ 2,113,878
41200	Overtime	188,290	120,000	120,000	170,000
Various	Benefits	375,724	427,252	427,252	380,891
42700	PERS retirement	513,249	660,415	660,415	735,806
42701	PERS cost sharing	(54,691)	(60,811)	(60,811)	(63,425)
42799	Salary charges in (out)	-	(500,000)	(500,000)	(1,321,512)
Salaries & Benefits Total		\$ 2,795,457	\$ 2,702,338	\$ 2,702,338	\$ 2,015,638
Maintenance & Operation					
43050	Repairs buildings and grounds	\$ 1,875	\$ -	\$ -	\$ -
43110	Contractual services	294,453	1,004,000	1,004,000	1,376,500
44100	Repairs to equipment	2,780	10,000	10,000	10,000
44450	Postage	225	-	-	-
44550	Travel	-	5,700	5,700	5,000
44650	Training	5,235	14,400	14,400	10,000
44700	Computer software	221	-	-	-
44760	Regulatory	6,046	7,000	7,000	8,000
45100	Books	334	-	-	-
45250	Office supplies	261	1,000	1,000	-
45300	Small tools	1,748	-	-	-
45350	General supplies	114,371	160,500	160,500	140,000
46011	Liability Insurance	68,353	88,346	88,346	109,589
Maintenance & Operation Total		\$ 495,902	\$ 1,290,946	\$ 1,290,946	\$ 1,659,089
Total		\$ 3,291,358	\$ 3,993,284	\$ 3,993,284	\$ 3,674,727

**CITY OF GLENDALE
 GLENDALE WATER & POWER DEPARTMENT
 ELECTRIC WORKS REVENUE FUND - OVERHEAD & UNDERGROUND
 (5820-4660)**

		Actual 2018-19	Adopted 2019-20	Revised 2019-20	Adopted 2020-21
Salaries & Benefits					
41100	Salaries	\$ 3,335,016	\$ 4,138,652	\$ 4,138,652	\$ 4,249,218
41200	Overtime	935,826	900,000	900,000	900,000
41300	Hourly wages	49,549	227,475	227,475	72,792
Various	Benefits	614,417	779,964	779,964	737,681
42700	PERS retirement	884,951	1,373,043	1,373,043	1,453,903
42701	PERS cost sharing	(97,058)	(130,857)	(130,857)	(128,106)
42799	Salary charges in (out)	-	(656,000)	(656,000)	(3,081,762)
Salaries & Benefits Total		\$ 5,722,700	\$ 6,632,277	\$ 6,632,277	\$ 4,203,726
Maintenance & Operation					
43050	Repairs buildings and grounds	\$ 2,844	\$ 20,000	\$ 20,000	\$ 2,000
43110	Contractual services	492,152	2,124,300	3,002,812	2,084,000
43111	Construction services	57,807	-	-	-
44100	Repairs to equipment	3,713	10,000	10,000	-
44120	Repairs to office equipment	-	-	-	7,500
44450	Postage	78	1,000	1,000	1,000
44550	Travel	-	-	-	40,000
44600	Laundry and towel service	-	1,000	1,000	-
44650	Training	27,981	50,000	50,000	10,000
44760	Regulatory	2,314	-	-	-
44800	Membership and dues	13,954	10,000	10,000	10,000
45250	Office supplies	(149)	-	-	-
45300	Small tools	47,332	10,000	10,000	50,000
45350	General supplies	940,957	550,000	550,000	800,000
45681	Business meetings	286	-	-	-
45682	Miscellaneous	-	500	500	-
46011	Liability Insurance	150,050	211,372	211,372	252,597
Maintenance & Operation Total		\$ 1,739,320	\$ 2,988,172	\$ 3,866,684	\$ 3,257,097
Total		\$ 7,462,020	\$ 9,620,449	\$ 10,498,961	\$ 7,460,823

**CITY OF GLENDALE
 GLENDALE WATER & POWER DEPARTMENT
 ELECTRIC WORKS REVENUE FUND - SUBSTRUCTURE
 (5820-4670)**

		Actual 2018-19	Adopted 2019-20	Revised 2019-20	Adopted 2020-21
Salaries & Benefits					
41100	Salaries	\$ 237,299	\$ 406,428	\$ 406,428	\$ 465,198
41200	Overtime	50,948	170,000	170,000	150,000
41300	Hourly wages	-	72,792	72,792	-
Various	Benefits	64,582	116,879	116,879	114,166
42700	PERS retirement	68,649	155,710	155,710	167,829
42701	PERS cost sharing	(7,021)	(14,471)	(14,471)	(14,310)
42799	Salary charges in (out)	-	(85,000)	(85,000)	(529,730)
Salaries & Benefits Total		\$ 414,457	\$ 822,338	\$ 822,338	\$ 353,153
Maintenance & Operation					
43110	Contractual services	\$ 48,960	\$ -	\$ -	\$ 50,000
44100	Repairs to equipment	310	-	-	-
45300	Small tools	2,088	5,000	5,000	5,000
45350	General supplies	45,306	5,000	5,000	50,000
46011	Liability Insurance	9,988	26,920	26,920	30,579
Maintenance & Operation Total		\$ 106,653	\$ 36,920	\$ 36,920	\$ 135,579
Total		\$ 521,109	\$ 859,258	\$ 859,258	\$ 488,732

**CITY OF GLENDALE
GLENDALE WATER & POWER DEPARTMENT
ELECTRIC WORKS REVENUE FUND - POWER MANAGEMENT
(5820-4680)**

		Actual 2018-19	Adopted 2019-20	Revised 2019-20	Adopted 2020-21
Salaries & Benefits					
41100	Salaries	\$ 1,018,514	\$ 1,443,761	\$ 1,443,761	\$ 1,405,216
41300	Hourly wages	46,989	90,979	90,979	-
Various	Benefits	186,314	280,842	280,842	219,777
42700	PERS retirement	308,955	518,758	518,758	509,625
42701	PERS cost sharing	(42,150)	(61,033)	(61,033)	(55,852)
Salaries & Benefits Total		\$ 1,518,622	\$ 2,273,307	\$ 2,273,307	\$ 2,078,766
Maintenance & Operation					
43110	Contractual services	\$ 7,250,217	\$ 5,857,500	\$ 5,857,500	\$ 5,922,913
44450	Postage	79	1,000	1,000	1,000
44550	Travel	933	35,000	35,000	35,000
44650	Training	3,580	22,000	22,000	22,000
44700	Computer software	-	10,000	10,000	10,000
44760	Regulatory	122,094	410,000	410,000	310,500
44761	RAC variance	(88,587)	-	-	-
44800	Membership and dues	66,011	70,000	70,000	70,000
45050	Periodicals and newspapers	3,800	10,000	10,000	10,000
45250	Office supplies	-	5,000	5,000	5,000
45350	General supplies	-	500	500	-
45502	Fuel natural gas	15,689,236	17,610,000	17,610,000	16,500,000
45506	Carbon allowances	635,873	1,500,000	1,500,000	895,000
45507	Renewable energy credits	(1,826,320)	30,000	30,000	30,000
45509	ECAC variance	(9,128,734)	-	-	-
45510	Purchased power	92,232,981	118,000,000	118,000,000	110,000,000
45511	Hedging costs	-	800,000	800,000	800,000
45681	Business meetings	981	1,000	1,000	1,500
45682	Miscellaneous	168	500	500	500
46001	Gas depletion	1,014,086	1,105,000	1,105,000	-
46005	Utilities	2,111	1,900	1,900	2,000
46011	Liability Insurance	37,276	65,231	65,231	69,843
Maintenance & Operation Total		\$ 106,015,786	\$ 145,534,631	\$ 145,534,631	\$ 134,685,256
Total		\$ 107,534,408	\$ 147,807,938	\$ 147,807,938	\$ 136,764,022

**CITY OF GLENDALE
GLENDALE WATER & POWER DEPARTMENT
ELECTRIC WORKS REVENUE FUND - POWER PLANT
(5820-4690)**

		Actual 2018-19	Adopted 2019-20	Revised 2019-20	Adopted 2020-21
Salaries & Benefits					
41100	Salaries	\$ 3,483,348	\$ 4,549,590	\$ 4,549,590	\$ 4,339,575
41200	Overtime	800,581	875,000	875,000	979,683
41300	Hourly wages	89,052	98,301	98,301	22,620
Various	Benefits	803,935	1,051,453	1,051,453	908,287
42700	PERS retirement	1,066,290	1,498,387	1,498,387	1,532,392
42701	PERS cost sharing	(120,914)	(145,845)	(145,845)	(139,416)
Salaries & Benefits Total		\$ 6,122,293	\$ 7,926,886	\$ 7,926,886	\$ 7,643,141
Maintenance & Operation					
43050	Repairs buildings and grounds	\$ 3,094	\$ 75,000	\$ 75,000	\$ -
43070	Lease payments	1,700	-	-	-
43110	Contractual services	825,919	1,050,000	1,050,000	1,814,500
44100	Repairs to equipment	213,921	300,000	300,000	150,000
44450	Postage	1,700	1,000	1,000	1,000
44550	Travel	1,282	10,000	10,000	5,000
44600	Laundry and towel service	9,198	20,000	20,000	20,000
44650	Training	7,364	26,000	26,000	26,000
44700	Computer software	134	5,000	5,000	-
44760	Regulatory	91,300	300,000	300,000	100,000
45150	Furniture and equipment	-	5,000	5,000	-
45170	Computer hardware	-	5,000	5,000	-
45250	Office supplies	8,846	10,000	10,000	10,000
45300	Small tools	-	15,000	15,000	15,000
45350	General supplies	542,165	800,000	800,000	600,000
45681	Business meetings	-	2,000	2,000	2,000
45682	Miscellaneous	28	4,000	4,000	2,000
46005	Utilities	1,944,419	2,503,300	2,503,300	2,300,000
46011	Liability Insurance	152,054	226,485	226,485	259,764
Maintenance & Operation Total		\$ 3,803,124	\$ 5,357,785	\$ 5,357,785	\$ 5,305,264
Total		\$ 9,925,417	\$ 13,284,671	\$ 13,284,671	\$ 12,948,405

**CITY OF GLENDALE
GLENDALE WATER & POWER DEPARTMENT
ELECTRIC DEPRECIATION FUND (5830)**

		Actual 2018-19	Adopted 2019-20	Revised 2019-20	Adopted 2020-21
Salaries & Benefits					
41100	Salaries	\$ 204,138	\$ -	\$ -	\$ -
41200	Overtime	339,783	-	-	-
41300	Hourly wages	61,485	-	-	-
Various	Benefits	64,960	-	-	-
42700	PERS retirement	60,840	-	-	-
42701	PERS cost sharing	(6,396)	-	-	-
Salaries & Benefits Total		\$ 724,809	\$ -	\$ -	\$ -
Maintenance & Operation					
43110	Contractual services	\$ 1,256,237	\$ 7,800,000	\$ 10,833,500	\$ 1,810,000
45350	General supplies	180,711	-	-	-
46011	Liability Insurance	21,086	-	-	-
Maintenance & Operation Total		\$ 1,458,034	\$ 7,800,000	\$ 10,833,500	\$ 1,810,000
Capital Outlay					
51000	Capital outlay	\$ 946,765	\$ 2,979,300	\$ 3,979,300	\$ 515,348
Capital Outlay Total		\$ 946,765	\$ 2,979,300	\$ 3,979,300	\$ 515,348
Capital Improvement					
51200	Other improvements	\$ 392,769	\$ 1,427,000	\$ 1,427,000	\$ 1,170,000
51250	Equipment	139,361	5,300,000	5,040,000	300,000
51800	Mobile equipment	157,563	-	-	250,000
52100	Construction	128,663	-	-	-
53300	Other expenditures	583,623	3,580,000	3,580,000	4,050,000
59999	Asset capitalization	(4,531,586)	-	-	-
Capital Improvement Total		\$ (3,129,607)	\$ 10,307,000	\$ 10,047,000	\$ 5,770,000
Total		\$ -	\$ 21,086,300	\$ 24,859,800	\$ 8,095,348

**CITY OF GLENDALE
GLENDALE WATER & POWER DEPARTMENT
ELECTRIC CUSTOMER PAID CAPITAL FUND (5850)**

		Actual 2018-19	Adopted 2019-20	Revised 2019-20	Adopted 2020-21
Salaries & Benefits					
41100	Salaries	\$ 140,589	\$ -	\$ -	\$ -
41200	Overtime	112,726	-	-	-
41300	Hourly wages	152	-	-	-
Various	Benefits	33,671	-	-	-
42700	PERS retirement	40,672	-	-	-
42701	PERS cost sharing	(4,830)	-	-	-
Salaries & Benefits Total		\$ 322,980	\$ -	\$ -	\$ -
Maintenance & Operation					
43110	Contractual services	\$ 112,321	\$ -	\$ -	\$ -
45350	General supplies	6,024	-	-	-
46011	Liability Insurance	8,790	-	-	-
Maintenance & Operation Total		\$ 127,135	\$ -	\$ -	\$ -
Capital Improvement					
52000	Engineering	\$ 14,636	\$ -	\$ -	\$ -
52100	Construction	6,768	-	-	-
53300	Other expenditures	250,171	2,000,000	2,000,000	2,000,000
59999	Asset capitalization	(721,690)	-	-	-
Capital Improvement Total		\$ (450,115)	\$ 2,000,000	\$ 2,000,000	\$ 2,000,000
Total		\$ -	\$ 2,000,000	\$ 2,000,000	\$ 2,000,000

**CITY OF GLENDALE
 GLENDALE WATER & POWER DEPARTMENT
 ENERGY COST ADJUSTMENT CHARGE FUND (5860)**

	Actual 2018-19	Adopted 2019-20	Revised 2019-20	Adopted 2020-21
Maintenance & Operation				
45509 ECAC variance	\$ 9,128,734	\$ -	\$ -	\$ -
Maintenance & Operation Total	\$ 9,128,734	\$ -	\$ -	\$ -
Total	\$ 9,128,734	\$ -	\$ -	\$ -

**CITY OF GLENDALE
 GLENDALE WATER & POWER DEPARTMENT
 REGULATORY ADJUSTMENT CHARGE FUND (5870)**

	Actual 2018-19	Adopted 2019-20	Revised 2019-20	Adopted 2020-21
Maintenance & Operation				
44761 RAC variance	\$ 88,587	\$ -	\$ -	\$ -
Maintenance & Operation Total	\$ 88,587	\$ -	\$ -	\$ -
Total	\$ 88,587	\$ -	\$ -	\$ -

**CITY OF GLENDALE
 GLENDALE WATER & POWER DEPARTMENT
 ELECTRIC CUSTOMER REPAIR FUND (5880)**

	Actual 2018-19	Adopted 2019-20	Revised 2019-20	Adopted 2020-21
Maintenance & Operation				
45350 General supplies	\$ -	\$ 50,000	\$ 50,000	\$ 50,000
Maintenance & Operation Total	\$ -	\$ 50,000	\$ 50,000	\$ 50,000
Total	\$ -	\$ 50,000	\$ 50,000	\$ 50,000

**CITY OF GLENDALE
GLENDALE WATER & POWER DEPARTMENT
WATER WORKS REVENUE FUND - ADMINISTRATION
(5920-4505)**

		Actual 2018-19	Adopted 2019-20	Revised 2019-20	Adopted 2020-21
Salaries & Benefits					
41100	Salaries	\$ 240,148	\$ 197,476	\$ 197,476	\$ 200,655
41200	Overtime	1,077	2,000	2,000	-
Various	Benefits	51,932	40,989	40,989	37,284
42700	PERS retirement	1,241,528	65,345	65,345	72,582
42701	PERS cost sharing	(9,509)	(7,692)	(7,692)	(7,959)
Salaries & Benefits Total		\$ 1,525,176	\$ 298,118	\$ 298,118	\$ 302,562
Maintenance & Operation					
43110	Contractual services	\$ 47,632	\$ 233,043	\$ 233,043	\$ 255,043
44120	Repairs to office equipment	-	418	418	-
44450	Postage	197	198	198	250
44550	Travel	6,943	4,400	4,400	5,000
44650	Training	1,180	1,100	1,100	1,500
44700	Computer software	420	-	-	-
44760	Regulatory	2,943	4,400	4,400	4,500
44800	Membership and dues	15,918	374	374	16,000
45050	Periodicals and newspapers	24	427	427	400
45100	Books	6	-	-	-
45150	Furniture and equipment	478	-	-	-
45250	Office supplies	3,077	7,920	7,920	3,500
45350	General supplies	3,333	14,300	14,300	2,500
45450	Printing and graphics	-	3,410	3,410	1,500
45681	Business meetings	2,910	1,430	1,430	1,500
45682	Miscellaneous	553,741	4,796	4,796	5,000
46000	Depreciation	6,815,656	6,991,457	6,991,457	6,609,758
46002	Amortization expense	-	-	-	10,095
46005	Utilities	6,095	16,500	16,500	11,000
46007	Cost allocation charge	4,516,935	4,563,164	4,563,164	3,875,918
46008	Fleet equipment rental charge	471,601	471,601	471,601	530,807
46009	ISD service charge	816,789	803,936	803,936	843,860
46010	Building maint service charge	515,525	458,007	458,007	299,140
46011	Liability Insurance	8,412	8,352	8,352	9,982
46012	Excess insurance and surety	108,814	117,810	117,810	138,626
47050	Interest on bonds	3,139,369	3,134,000	3,134,000	3,039,055
Maintenance & Operation Total		\$ 17,037,999	\$ 16,841,043	\$ 16,841,043	\$ 15,664,934
Total		\$ 18,563,175	\$ 17,139,161	\$ 17,139,161	\$ 15,967,496

**CITY OF GLENDALE
 GLENDALE WATER & POWER DEPARTMENT
 WATER WORKS REVENUE FUND - CUSTOMER SERVICE
 (5920-4509)**

		Actual 2018-19	Adopted 2019-20	Revised 2019-20	Adopted 2020-21
Salaries & Benefits					
41100	Salaries	\$ 837,783	\$ 914,925	\$ 914,925	\$ 883,499
41200	Overtime	14,471	12,000	12,000	12,000
41300	Hourly wages	8,608	11,101	11,101	9,200
Various	Benefits	187,830	211,348	211,348	197,662
42700	PERS retirement	244,995	309,996	309,996	320,416
42701	PERS cost sharing	(33,416)	(36,503)	(36,503)	(35,152)
Salaries & Benefits Total		\$ 1,260,271	\$ 1,422,867	\$ 1,422,867	\$ 1,387,625
Maintenance & Operation					
43110	Contractual services	\$ 246,170	\$ 482,232	\$ 482,232	\$ 359,352
44450	Postage	2,311	3,840	3,840	4,000
44550	Travel	502	3,168	3,168	3,000
44650	Training	1,237	3,144	3,144	3,200
44760	Regulatory	4	-	-	-
44800	Membership and dues	155	168	168	200
45150	Furniture and equipment	3,132	5,664	5,664	2,500
45250	Office supplies	3,370	4,032	4,032	4,000
45300	Small tools	-	648	648	-
45350	General supplies	17	960	960	1,000
45512	Public benefit programs	183	-	-	-
45680	Uncollectible accounts	51,410	70,000	70,000	70,000
45681	Business meetings	-	360	360	500
45682	Miscellaneous	(24)	312	312	500
46007	Cost allocation charge	151,118	167,708	167,708	187,510
46008	Fleet equipment rental charge	15,645	15,645	15,645	10,267
46009	ISD service charge	169,722	174,310	174,310	182,967
46010	Building maint service charge	107,122	99,306	99,306	94,965
46011	Liability Insurance	30,031	39,940	39,940	45,022
Maintenance & Operation Total		\$ 782,106	\$ 1,071,437	\$ 1,071,437	\$ 968,983
Total		\$ 2,042,377	\$ 2,494,304	\$ 2,494,304	\$ 2,356,608

**CITY OF GLENDALE
 GLENDALE WATER & POWER DEPARTMENT
 WATER WORKS REVENUE FUND - CONSERVATION & UTILITY MODERNIZATION
 (5920-4520)**

		Actual 2018-19	Adopted 2019-20	Revised 2019-20	Adopted 2020-21
Salaries & Benefits					
41100	Salaries	\$ 98,017	\$ 105,815	\$ 105,815	\$ 94,644
41200	Overtime	1,395	7,500	7,500	-
41300	Hourly wages	-	20,937	20,937	-
Various	Benefits	23,180	26,724	26,724	16,495
42700	PERS retirement	28,716	39,058	39,058	34,184
42701	PERS cost sharing	(3,909)	(4,598)	(4,598)	(3,749)
Salaries & Benefits Total		\$ 147,399	\$ 195,436	\$ 195,436	\$ 141,574
Maintenance & Operation					
43110	Contractual services	\$ 538,468	\$ 208,920	\$ 208,920	\$ 264,020
44100	Repairs to equipment	3,740	-	-	-
44200	Advertising	2,315	3,168	3,168	3,200
44450	Postage	4,569	29,040	29,040	10,000
44550	Travel	2,410	572	572	500
44600	Laundry and towel service	45	-	-	-
44650	Training	7,492	1,320	1,320	1,000
44700	Computer software	7,374	-	-	-
44800	Membership and dues	4,832	154	154	3,000
45050	Periodicals and newspapers	4,476	132	132	-
45150	Furniture and equipment	619	264	264	1,000
45170	Computer hardware	4,144	-	-	-
45250	Office supplies	6,020	550	550	1,000
45350	General supplies	3,608	550	550	5,000
45450	Printing and graphics	7,133	4,268	4,268	12,000
45681	Business meetings	142	154	154	200
45682	Miscellaneous	11,693	330	330	7,500
46011	Liability Insurance	3,449	5,249	5,249	4,710
Maintenance & Operation Total		\$ 612,528	\$ 254,671	\$ 254,671	\$ 313,130
Total		\$ 759,926	\$ 450,107	\$ 450,107	\$ 454,704

**CITY OF GLENDALE
 GLENDALE WATER & POWER DEPARTMENT
 WATER WORKS REVENUE FUND - BUSINESS SYSTEM SUPPORT
 (5920-4521)**

		Actual 2018-19	Adopted 2019-20	Revised 2019-20	Adopted 2020-21
Salaries & Benefits					
41100	Salaries	\$ -	\$ 41,667	\$ 41,667	\$ 43,959
41200	Overtime	-	-	-	7,500
41300	Hourly wages	-	10,894	10,894	-
Various	Benefits	-	9,960	9,960	9,842
42700	PERS retirement	-	14,012	14,012	15,858
42701	PERS cost sharing	-	(1,652)	(1,652)	(1,743)
Salaries & Benefits Total		\$ -	\$ 74,881	\$ 74,881	\$ 75,416
Maintenance & Operation					
43110	Contractual services	\$ -	\$ 680,928	\$ 680,928	\$ 646,427
44120	Repairs to office equipment	-	3,806	3,806	3,500
44450	Postage	-	250	250	250
44550	Travel	-	4,004	4,004	4,000
44650	Training	-	4,950	4,950	5,000
44800	Membership and dues	-	440	440	500
45150	Furniture and equipment	-	28,600	28,600	12,000
45170	Computer hardware	-	21,362	21,362	10,000
45250	Office supplies	-	880	880	1,000
45350	General supplies	-	3,960	3,960	3,000
45681	Business meetings	-	220	220	250
45682	Miscellaneous	-	5,280	5,280	5,000
46011	Liability Insurance	-	1,780	1,780	2,567
Maintenance & Operation Total		\$ -	\$ 756,460	\$ 756,460	\$ 693,494
Total		\$ -	\$ 831,341	\$ 831,341	\$ 768,910

**CITY OF GLENDALE
 GLENDALE WATER & POWER DEPARTMENT
 WATER WORKS REVENUE FUND - UTILITY FINANCE
 (5920-4530)**

		Actual 2018-19	Adopted 2019-20	Revised 2019-20	Adopted 2020-21
Salaries & Benefits					
41100	Salaries	\$ 53,726	\$ 107,043	\$ 107,043	\$ 116,694
41200	Overtime	58	-	-	-
Various	Benefits	14,596	27,239	27,239	27,858
42700	PERS retirement	15,514	35,992	35,992	42,138
42701	PERS cost sharing	(2,132)	(4,237)	(4,237)	(4,621)
Salaries & Benefits Total		\$ 81,761	\$ 166,037	\$ 166,037	\$ 182,069
Maintenance & Operation					
46011	Liability Insurance	\$ 1,879	\$ 4,553	\$ 4,553	\$ 5,803
Maintenance & Operation Total		\$ 1,879	\$ 4,553	\$ 4,553	\$ 5,803
Total		\$ 83,640	\$ 170,590	\$ 170,590	\$ 187,872

**CITY OF GLENDALE
 GLENDALE WATER & POWER DEPARTMENT
 WATER WORKS REVENUE FUND - ENVIRONMENTAL & SAFETY
 (5920-4540)**

		Actual 2018-19	Adopted 2019-20	Revised 2019-20	Adopted 2020-21
Salaries & Benefits					
41100	Salaries	\$ 106,966	\$ 109,700	\$ 109,700	\$ 110,872
41200	Overtime	-	1,200	1,200	1,200
Various	Benefits	18,142	19,112	19,112	16,251
42700	PERS retirement	31,014	36,829	36,829	39,966
42701	PERS cost sharing	(4,228)	(4,335)	(4,335)	(4,382)
Salaries & Benefits Total		\$ 151,894	\$ 162,506	\$ 162,506	\$ 163,907
Maintenance & Operation					
43110	Contractual services	-	20,900	20,900	35,200
44450	Postage	1	-	-	-
44550	Travel	100	2,024	2,024	2,000
44650	Training	2,840	14,300	14,300	12,000
44760	Regulatory	-	-	-	10,000
44800	Membership and dues	178	506	506	500
45050	Periodicals and newspapers	-	22	22	-
45100	Books	-	242	242	-
45150	Furniture and equipment	-	110	110	-
45350	General supplies	239	15,400	15,400	7,000
45400	Reports and publications	-	66	66	-
45450	Printing and graphics	-	110	110	-
45681	Business meetings	-	264	264	250
45682	Miscellaneous	5,631	14,388	14,388	5,000
46011	Liability Insurance	3,741	4,718	4,718	5,572
Maintenance & Operation Total		\$ 12,731	\$ 73,050	\$ 73,050	\$ 77,522
Total		\$ 164,626	\$ 235,556	\$ 235,556	\$ 241,429

**CITY OF GLENDALE
 GLENDALE WATER & POWER DEPARTMENT
 WATER WORKS REVENUE FUND - UOC & WAREHOUSE
 (5920-4550)**

		Actual 2018-19	Adopted 2019-20	Revised 2019-20	Adopted 2020-21
Salaries & Benefits					
41100	Salaries	\$ 51,287	\$ 66,689	\$ 66,689	\$ 56,352
41200	Overtime	3,165	2,000	2,000	2,000
41300	Hourly wages	94	5,456	5,456	8,542
Various	Benefits	19,494	26,212	26,212	17,759
42700	PERS retirement	14,940	24,289	24,289	23,303
42701	PERS cost sharing	(2,033)	(2,859)	(2,859)	(2,555)
Salaries & Benefits Total		\$ 86,948	\$ 121,787	\$ 121,787	\$ 105,401
Maintenance & Operation					
43050	Repairs buildings and grounds	\$ 433	\$ 28,600	\$ 28,600	\$ 5,000
43070	Lease payments	12,270	12,650	12,650	12,000
43110	Contractual services	57,650	61,158	61,158	63,382
44450	Postage	2	-	-	-
44600	Laundry and towel service	784	5,786	5,786	2,000
44650	Training	73	-	-	-
45150	Furniture and equipment	-	660	660	650
45250	Office supplies	734	1,144	1,144	1,000
45300	Small tools	-	286	286	250
45350	General supplies	4,598	3,080	3,080	10,000
45620	Materials overhead	21,304	-	-	-
45681	Business meetings	-	110	110	150
45682	Miscellaneous	1,591	7,480	7,480	2,000
45684	Discount earned and lost	-	42,680	42,680	-
46005	Utilities	118,098	107,200	107,200	110,000
46011	Liability Insurance	1,900	3,156	3,156	3,330
Maintenance & Operation Total		\$ 219,437	\$ 273,990	\$ 273,990	\$ 209,762
Total		\$ 306,385	\$ 395,777	\$ 395,777	\$ 315,163

**CITY OF GLENDALE
 GLENDALE WATER & POWER DEPARTMENT
 WATER WORKS REVENUE FUND - YARD
 (5920-4560)**

		Actual 2018-19	Adopted 2019-20	Revised 2019-20	Adopted 2020-21
Salaries & Benefits					
41100	Salaries	\$ 15,954	\$ 25,066	\$ 25,066	\$ 25,031
41200	Overtime	68	-	-	-
41300	Hourly wages	7,131	9,247	9,247	6,918
Various	Benefits	5,402	9,214	9,214	12,197
42700	PERS retirement	6,675	11,063	11,063	11,519
42701	PERS cost sharing	(910)	(1,303)	(1,303)	(1,263)
Salaries & Benefits Total		\$ 34,320	\$ 53,287	\$ 53,287	\$ 54,402
Maintenance & Operation					
45250	Office supplies	\$ 2,175	\$ 1,100	\$ 1,100	\$ 3,500
46011	Liability Insurance	807	1,459	1,459	1,589
Maintenance & Operation Total		\$ 2,982	\$ 2,559	\$ 2,559	\$ 5,089
Total		\$ 37,303	\$ 55,846	\$ 55,846	\$ 59,491

**CITY OF GLENDALE
GLENDALE WATER & POWER DEPARTMENT
WATER WORKS REVENUE FUND - ENGINEERING
(5920-4700)**

		Actual 2018-19	Adopted 2019-20	Revised 2019-20	Adopted 2020-21
Salaries & Benefits					
41100	Salaries	\$ 1,274,308	\$ 1,613,791	\$ 1,613,791	\$ 1,609,275
41200	Overtime	17,648	15,000	15,000	15,000
41300	Hourly wages	24,409	87,071	87,071	79,143
Various	Benefits	283,766	354,701	354,701	297,589
42700	PERS retirement	348,420	567,773	567,773	583,009
42701	PERS cost sharing	(47,633)	(66,803)	(66,803)	(63,896)
42799	Salary charges in (out)	-	(220,000)	(220,000)	(378,018)
Salaries & Benefits Total		\$ 1,900,918	\$ 2,351,533	\$ 2,351,533	\$ 2,142,102
Maintenance & Operation					
43110	Contractual services	\$ 614,771	\$ 941,500	\$ 941,500	\$ 780,500
44100	Repairs to equipment	1,487	-	-	-
44450	Postage	53	-	-	-
44550	Travel	2,595	4,000	4,000	9,500
44650	Training	4,352	4,000	4,000	4,000
44700	Computer software	44,360	-	-	-
44760	Regulatory	2,606	135,000	135,000	135,000
44800	Membership and dues	14,936	80,000	80,000	80,000
45100	Books	229	300	300	300
45101	Digital resources	-	-	-	2,000
45150	Furniture and equipment	429	-	-	-
45170	Computer hardware	264	2,000	2,000	-
45250	Office supplies	3,472	2,200	2,200	4,000
45350	General supplies	8,812	1,200	1,200	1,200
45520	Purchased water	15,768,462	18,756,200	18,756,200	19,287,129
45681	Business meetings	59	500	500	500
45682	Miscellaneous	2,964	2,500	2,500	2,500
46005	Utilities	202,777	3,600,000	3,600,000	3,630,000
46011	Liability Insurance	46,047	72,113	72,113	84,668
Maintenance & Operation Total		\$ 16,718,673	\$ 23,601,513	\$ 23,601,513	\$ 24,021,297
Total		\$ 18,619,592	\$ 25,953,046	\$ 25,953,046	\$ 26,163,399

**CITY OF GLENDALE
 GLENDALE WATER & POWER DEPARTMENT
 WATER WORKS REVENUE FUND - WATER DISTRIBUTION
 (5920-4710)**

		Actual 2018-19	Adopted 2019-20	Revised 2019-20	Adopted 2020-21
Salaries & Benefits					
41100	Salaries	\$ 1,395,413	\$ 1,942,013	\$ 1,942,013	\$ 1,953,227
41200	Overtime	111,717	100,000	100,000	100,000
41300	Hourly wages	42,964	60,030	60,030	61,683
Various	Benefits	482,765	695,012	695,012	593,664
42700	PERS retirement	413,335	654,790	654,790	689,856
42701	PERS cost sharing	(49,239)	(64,727)	(64,727)	(63,051)
42799	Salary charges in (out)	-	(310,000)	(310,000)	(533,661)
Salaries & Benefits Total		\$ 2,396,955	\$ 3,077,118	\$ 3,077,118	\$ 2,801,718
Maintenance & Operation					
43050	Repairs buildings and grounds	\$ 10,757	\$ -	\$ -	\$ 30,000
43110	Contractual services	274,154	215,000	215,000	376,500
43111	Construction services	24,911	-	-	-
44100	Repairs to equipment	5,062	10,000	10,000	-
44120	Repairs to office equipment	-	-	-	10,000
44450	Postage	92	-	-	-
44600	Laundry and towel service	8,244	6,000	6,000	8,000
44760	Regulatory	10,641	20,000	20,000	-
45250	Office supplies	210	200	200	-
45300	Small tools	10,556	15,000	15,000	15,000
45350	General supplies	307,020	300,000	300,000	300,000
45681	Business meetings	912	-	-	-
45682	Miscellaneous	-	500	500	500
46005	Utilities	9,639	29,500	29,500	-
46011	Liability Insurance	54,122	88,564	88,564	104,730
Maintenance & Operation Total		\$ 716,320	\$ 684,764	\$ 684,764	\$ 844,730
Total		\$ 3,113,275	\$ 3,761,882	\$ 3,761,882	\$ 3,646,448

**CITY OF GLENDALE
GLENDALE WATER & POWER DEPARTMENT
WATER WORKS REVENUE FUND - OPERATION
(5920-4720)**

		Actual 2018-19	Adopted 2019-20	Revised 2019-20	Adopted 2020-21
Salaries & Benefits					
41100	Salaries	\$ 1,144,068	\$ 1,183,227	\$ 1,183,227	\$ 1,215,111
41200	Overtime	98,099	100,000	100,000	100,000
41300	Hourly wages	-	28,600	28,600	28,500
Various	Benefits	346,096	354,841	354,841	340,166
42700	PERS retirement	328,139	396,523	396,523	419,408
42701	PERS cost sharing	(38,777)	(40,529)	(40,529)	(39,763)
42799	Salary charges in (out)	-	-	-	(20,635)
Salaries & Benefits Total		\$ 1,877,624	\$ 2,022,662	\$ 2,022,662	\$ 2,042,787
Maintenance & Operation					
43050	Repairs buildings and grounds	\$ 84,783	\$ 70,000	\$ 70,000	\$ 70,000
43110	Contractual services	479,195	547,000	547,000	587,000
44100	Repairs to equipment	52,401	95,000	95,000	95,000
44450	Postage	20	-	-	-
44550	Travel	1,046	7,700	7,700	1,330
44650	Training	7,805	32,800	32,800	25,050
44700	Computer software	11,300	-	-	-
44760	Regulatory	161,420	25,000	25,000	5,000
44800	Membership and dues	51,433	3,000	3,000	3,000
45250	Office supplies	3,933	5,000	5,000	-
45300	Small tools	324	500	500	500
45350	General supplies	117,361	180,000	180,000	185,000
45450	Printing and graphics	-	30,200	30,200	-
45681	Business meetings	-	1,500	1,500	1,500
45682	Miscellaneous	-	4,000	4,000	4,000
46005	Utilities	2,547,871	-	-	-
46011	Liability Insurance	43,427	55,756	55,756	66,513
Maintenance & Operation Total		\$ 3,562,320	\$ 1,057,456	\$ 1,057,456	\$ 1,043,893
Total		\$ 5,439,944	\$ 3,080,118	\$ 3,080,118	\$ 3,086,680

**CITY OF GLENDALE
 GLENDALE WATER & POWER DEPARTMENT
 WATER WORKS REVENUE FUND - WATER QUALITY
 (5920-4730)**

		Actual 2018-19	Adopted 2019-20	Revised 2019-20	Adopted 2020-21
Salaries & Benefits					
41100	Salaries	\$ 714,934	\$ 743,024	\$ 743,024	\$ 766,423
41200	Overtime	14,225	20,000	20,000	15,000
Various	Benefits	261,867	271,711	271,711	251,961
42700	PERS retirement	209,603	249,567	249,567	276,460
42701	PERS cost sharing	(23,991)	(24,676)	(24,676)	(25,378)
Salaries & Benefits Total		\$ 1,176,636	\$ 1,259,626	\$ 1,259,626	\$ 1,284,466
Maintenance & Operation					
43110	Contractual services	\$ 81,028	\$ 300,000	\$ 300,000	\$ 200,000
44450	Postage	531	2,500	2,500	2,500
44650	Training	600	-	-	-
44700	Computer software	5,656	30,000	30,000	-
44800	Membership and dues	80	500	500	500
45150	Furniture and equipment	151	-	-	-
45250	Office supplies	1,424	-	-	-
45350	General supplies	172,098	240,000	240,000	240,000
45450	Printing and graphics	-	30,000	30,000	30,000
45682	Miscellaneous	20	-	-	-
46011	Liability Insurance	25,446	32,431	32,431	38,840
Maintenance & Operation Total		\$ 287,034	\$ 635,431	\$ 635,431	\$ 511,840
Total		\$ 1,463,671	\$ 1,895,057	\$ 1,895,057	\$ 1,796,306

**CITY OF GLENDALE
GLENDALE WATER & POWER DEPARTMENT
WATER DEPRECIATION FUND (5930)**

		Actual 2018-19	Adopted 2019-20	Revised 2019-20	Adopted 2020-21
Salaries & Benefits					
41100	Salaries	\$ 267,190	\$ -	\$ -	\$ -
41200	Overtime	61,565	-	-	-
41300	Hourly wages	9,284	-	-	-
Various	Benefits	86,046	-	-	-
42700	PERS retirement	81,576	-	-	-
42701	PERS cost sharing	(9,532)	-	-	-
Salaries & Benefits Total		\$ 496,130	\$ -	\$ -	\$ -
Maintenance & Operation					
43110	Contractual services	\$ 714,321	\$ 5,600,000	\$ 5,600,000*	\$ 2,120,000
46011	Liability Insurance	11,805	-	-	-
Maintenance & Operation Total		\$ 726,126	\$ 5,600,000	\$ 5,600,000	\$ 2,120,000
Capital Outlay					
51000	Capital outlay	\$ 565,119	\$ 1,001,800	\$ 1,001,800	\$ 63,752
Capital Outlay Total		\$ 565,119	\$ 1,001,800	\$ 1,001,800	\$ 63,752
Capital Improvement					
51200	Other improvements	\$ -	\$ 33,000	\$ 33,000	\$ 330,000
51250	Equipment	-	400,000	400,000	-
51800	Mobile equipment	110,525	-	-	-
52100	Construction	2,383,899	4,800,000	4,800,000	4,410,000
53300	Other expenditures	208,942	-	-	-
59999	Asset capitalization	(4,490,741)	-	-	-
Capital Improvement Total		\$ (1,787,375)	\$ 5,233,000	\$ 5,233,000	\$ 4,740,000
Total		\$ -	\$ 11,834,800	\$ 11,834,800	\$ 6,923,752

**CITY OF GLENDALE
 GLENDALE WATER & POWER DEPARTMENT
 WATER CUSTOMER PAID CAPITAL FUND (5950)**

		Actual 2018-19	Adopted 2019-20	Revised 2019-20	Adopted 2020-21
Salaries & Benefits					
41100	Salaries	\$ 224,148	\$ -	\$ -	\$ -
41200	Overtime	13,357	-	-	-
41300	Hourly wages	26,488	-	-	-
Various	Benefits	51,938	-	-	-
42700	PERS retirement	73,128	-	-	-
42701	PERS cost sharing	(9,385)	-	-	-
Salaries & Benefits Total		\$ 379,676	\$ -	\$ -	\$ -
Maintenance & Operation					
43110	Contractual services	\$ 68,275	\$ 1,500,000	\$ 1,500,000	\$ 1,275,000
46011	Liability Insurance	9,164	-	-	-
Maintenance & Operation Total		\$ 77,439	\$ 1,500,000	\$ 1,500,000	\$ 1,275,000
Capital Improvement					
52100	Construction	\$ 27,486	\$ -	\$ -	\$ -
53300	Other expenditures	83,290	-	-	-
59999	Asset capitalization	(567,890)	-	-	-
Capital Improvement Total		\$ (457,114)	\$ -	\$ -	\$ -
Total		\$ -	\$ 1,500,000	\$ 1,500,000	\$ 1,275,000

**CITY OF GLENDALE
 GLENDALE WATER & POWER DEPARTMENT
 WATER CUSTOMER REPAIR FUND (5980)**

		Actual 2018-19	Adopted 2019-20	Revised 2019-20	Adopted 2020-21
Salaries & Benefits					
41100	Salaries	\$ 3,179	\$ -	\$ -	\$ -
41200	Overtime	1,136	-	-	-
41300	Hourly wages	304	-	-	-
Various	Benefits	1,281	-	-	-
42700	PERS retirement	1,030	-	-	-
42701	PERS cost sharing	(109)	-	-	-
Salaries & Benefits Total		\$ 6,820	\$ -	\$ -	\$ -
Maintenance & Operation					
43050	Repairs buildings and grounds	\$ 347	\$ -	\$ -	\$ -
43110	Contractual services	2,823	-	-	-
44760	Regulatory	336	-	-	-
45350	General supplies	11,710	100,000	100,000	100,000
46011	Liability Insurance	162	-	-	-
Maintenance & Operation Total		\$ 15,378	\$ 100,000	\$ 100,000	\$ 100,000
Total		\$ 22,198	\$ 100,000	\$ 100,000	\$ 100,000

**CITY OF GLENDALE
GLENDALE WATER & POWER DEPARTMENT
PERSONNEL CLASSIFICATION DETAIL**

Classification	Actual 2018-19	Adopted 2019-20	Revised 2019-20	Adopted 2020-21
<u>Salaried Positions</u>				
Administrative Analyst	1.00	-	2.00	2.00
Administrative Assistant	2.00	2.00	3.00	3.00
Assistant Engineering Technician	3.00	3.00	3.00	3.00
Assistant Environmental Technician	1.00	1.00	1.00	1.00
Assistant General Manager	1.00	1.00	1.00	1.00
Assistant IT Applications Specialist	4.00	4.00	4.00	4.00
Business Transformer & Marketing Administrator	1.00	1.00	-	-
Chief Assistant General Manager/Electric	1.00	1.00	1.00	1.00
Chief Assistant General Manager/Water	1.00	1.00	1.00	1.00
Civil Engineer II	1.00	2.00	1.00	1.00
Civil Engineering Assistant	2.00	2.00	2.00	2.00
Civil Engineering Associate	2.00	2.00	2.00	2.00
Community Outreach Associate	2.00	2.00	2.00	2.00
Customer Service Administrator	1.00	1.00	1.00	1.00
Customer Service Field Supervisor	1.00	1.00	1.00	1.00
Customer Service Field Technician	6.00	6.00	6.00	6.00
Customer Service Operation Manager	2.00	2.00	2.00	2.00
Customer Service Representative	1.00	1.00	3.00	3.00
Customer Service Utility Representative	25.00	25.00	25.00	25.00
Customer Service Utility Supervisor	2.00	2.00	2.00	2.00
Deputy General Manager GWP	-	-	2.00	2.00
Deputy Chief Information Officer	1.00	1.00	-	-
Electrical Engineer I	1.00	1.00	1.00	1.00
Electrical Engineer II	2.00	2.00	1.00	2.00
Electrical Engineering Assistant	3.00	3.00	3.00	3.00
Electrical Engineering Associate	4.00	4.00	4.00	4.00
Electrical Helper	1.00	1.00	1.00	1.00
Electrical Line Mechanic	7.00	7.00	7.00	7.00
Electrical Line Mechanic Apprentice	11.00	11.00	11.00	11.00
Electrical Line Mechanic Supervisor I	8.00	8.00	8.00	8.00
Electrical Line Mechanic Supervisor II	3.00	3.00	3.00	3.00
Electrical Mechanic Assistant	5.00	5.00	5.00	5.00
Electrical Services Administrator	1.00	1.00	1.00	1.00
Electrical Service Planner	3.00	3.00	3.00	3.00
Electrical Superintendent-Const, Trans&Di	1.00	1.00	1.00	1.00
Electrical Superintendent-SubMeter&Comm	1.00	1.00	1.00	1.00
Electrical Superintendent	1.00	1.00	1.00	1.00
Electrical Test Supervisor	1.00	1.00	1.00	1.00
Electrical Test Technician I	2.00	1.00	2.00	2.00
Electrical Test Technician II	7.00	8.00	7.00	7.00
Energy Marketer/Trader	1.00	2.00	1.00	1.00
Energy Trading Manager	1.00	1.00	1.00	1.00
Engineering Aide	1.00	1.00	1.00	1.00
Engineering Technician	3.00	3.00	2.00	2.00
Environmental Program Administrator	1.00	1.00	1.00	1.00
Environmental Program Specialist	1.00	1.00	1.00	1.00
General Manager GWP	1.00	1.00	1.00	1.00
Human Resources Associate	0.50	-	-	-
Integrated Resources Plan Administrator	1.00	1.00	-	-
IT Applications Analyst	1.00	1.00	1.00	1.00
Line Clearance Forestry Supervisor I	2.00	2.00	2.00	2.00
Mechanical Engineer II	1.00	1.00	1.00	1.00
Office Services Supervisor	2.00	2.00	2.00	2.00
Power Contracts Manager	1.00	1.00	1.00	1.00

**CITY OF GLENDALE
GLENDALE WATER & POWER DEPARTMENT
PERSONNEL CLASSIFICATION DETAIL**

Classification	Actual 2018-19	Adopted 2019-20	Revised 2019-20	Adopted 2020-21
Power Planning Manager	1.00	1.00	1.00	1.00
Power Plant Control Operator	14.00	15.00	14.00	13.00
Power Plant Control Operator Apprentice	5.00	4.00	6.00	6.00
Power Plant Inst & Cntrl Supervisor	1.00	1.00	1.00	1.00
Power Plant Maintenance Supervisor	1.00	1.00	1.00	1.00
Power Plant Mechanic	5.00	4.00	5.00	5.00
Power Plant Mechanic Apprentice	2.00	2.00	1.00	1.00
Power Plant Mechanic Assistant	1.00	1.00	1.00	1.00
Power Plant Operations Supervisor	1.00	1.00	1.00	1.00
Power Plant Operator	4.00	4.00	2.00	2.00
Power Plant Shift Supervisor	5.00	5.00	5.00	5.00
Power Plant Superintendent	1.00	1.00	1.00	1.00
Power Plant Technician	1.00	1.00	1.00	1.00
Power System Operator I	4.00	5.00	4.00	4.00
Power System Operator II	4.00	4.00	4.00	4.00
Power System Trainee	1.00	-	1.00	1.00
Power Systems Analyst	1.00	1.00	1.00	1.00
Power Systems Associate	1.00	1.00	1.00	1.00
Principal Electrical Engineer	1.00	1.00	1.00	1.00
Principal Engineering Technician	1.00	1.00	1.00	1.00
Principal Power System Operator	1.00	1.00	1.00	1.00
Principal Utility Financial Analyst	1.00	1.00	1.00	1.00
Program Supervisor	1.00	-	-	-
Public Benefits Charge Coordinator	1.00	1.00	1.00	1.00
Public Benefits Charge Marketing Manager	2.00	2.00	2.00	2.00
Sr. Administrative Analyst	-	1.00	-	-
Sr. Civil Engineer	3.00	2.00	3.00	3.00
Sr. Customer Service Field Technician	1.00	1.00	1.00	1.00
Sr. Customer Service Utility Representative	7.00	7.00	6.00	6.00
Sr. Electrical Engineer	-	-	2.00	1.00
Sr. Electrical Service Planner	3.00	3.00	3.00	3.00
Sr. Electrical Test Technician	2.00	2.00	2.00	2.00
Sr. Engineering Technician	3.00	3.00	3.00	3.00
Sr. Environmental Program Specialist	1.00	1.00	1.00	1.00
Sr. IT Application Specialist	3.00	3.00	3.00	3.00
Sr. Mechanical Engineer	2.00	2.00	2.00	2.00
Sr. Office Services Specialist	3.00	3.00	2.00	2.00
Sr. Office Specialist	2.00	2.00	2.00	2.00
Sr. Power Plant Mechanic	2.00	2.00	2.00	2.00
Sr. Power Plant Technician	2.00	2.00	2.00	2.00
Sr. Storekeeper	1.00	1.00	1.00	1.00
Sr. Utility Financial Analyst	2.00	1.00	2.00	2.00
Sr. Utility Locator	1.00	1.00	1.00	1.00
Sr. Water Facilities Operator	1.00	1.00	1.00	1.00
Sr. Water Meter Repairer	-	-	1.00	-
Sr. Water Quality Specialist	1.00	1.00	1.00	1.00
Sr. Water Quality Technician	1.00	1.00	1.00	1.00
Sr. Water System Mechanic	5.00	5.00	5.00	5.00
Station Electrician	1.00	1.00	1.00	1.00
Station Electrician/Operator	8.00	8.00	7.00	7.00
Station Electrician/Operator Apprentice	2.00	2.00	3.00	3.00
Station Electrician/Operator Supervisor I	4.00	4.00	4.00	4.00
Station Electrician/Operator Supervisor II	1.00	1.00	1.00	1.00
Station Electrician Supervisor I	1.00	1.00	1.00	1.00
Storekeeper	2.00	2.00	2.00	2.00

**CITY OF GLENDALE
GLENDALE WATER & POWER DEPARTMENT
PERSONNEL CLASSIFICATION DETAIL**

Classification	Actual 2018-19	Adopted 2019-20	Revised 2019-20	Adopted 2020-21				
Stores Supervisor	1.00	1.00	1.00	1.00				
Supervising Electrical Engineering Associate	1.00	1.00	1.00	1.00				
Sustainability Officer	-	-	-	0.60				
Systems Analyst	1.00	1.00	1.00	1.00				
Transformer Shop Technician	1.00	1.00	1.00	1.00				
Underground Distribution Construction Mechanic I	3.00	4.00	3.00	3.00				
Underground Distribution Construction Mechanic II	1.00	1.00	1.00	1.00				
Underground Distribution Construction Supervisor I	1.00	-	1.00	1.00				
Utility Building Repairer	1.00	1.00	1.00	1.00				
Utility Business System Supp Manager	1.00	1.00	-	-				
Utility Business System Supp Administrator	-	-	1.00	1.00				
Utility Construction Inspector	2.00	2.00	2.00	2.00				
Utility Equipment Operator II	1.00	1.00	1.00	1.00				
Utility Locator	1.00	1.00	1.00	1.00				
Utility Manager	2.00	2.00	2.00	2.00				
Utility Safety Officer	1.00	1.00	1.00	1.00				
Utility Welder	2.00	2.00	2.00	2.00				
Water Facilities Operator	3.00	3.00	3.00	3.00				
Water Facilities Supervisor	1.00	1.00	1.00	1.00				
Water Meter Repairer	1.00	1.00	-	1.00				
Water Quality Manager	1.00	1.00	1.00	1.00				
Water Quality Specialist	1.00	1.00	1.00	1.00				
Water Quality Supervisor	1.00	1.00	1.00	1.00				
Water Quality Technician	3.00	3.00	3.00	3.00				
Water Services Administrator	1.00	1.00	1.00	1.00				
Water Superintendent	2.00	2.00	2.00	2.00				
Water System Apprentice	2.00	2.00	2.00	2.00				
Water System Equipment Operator	3.00	3.00	3.00	3.00				
Water System Helper	6.00	5.00	6.00	6.00				
Water System Mechanic	3.00	4.00	3.00	3.00				
Water System Operations Supervisor	2.00	2.00	2.00	2.00				
Water System Supervisor I	1.00	1.00	1.00	1.00				
Water System Supervisor II	4.00	4.00	4.00	4.00				
Total Salaried Positions	<u>321.50</u>	<u>319.00</u>	<u>319.00</u>	<u>318.60</u>				
<u>Hourly Positions</u>		*	*	*				
City Resource Specialist	0.34	(1)	0.34	(1)	0.34	(1)	-	*
Customer Service Utility Representative	1.20	(2)	0.92	(2)	0.92	(2)	0.92	(1)
Electrical Helper	3.61	(6)	7.14	(12)	7.14	(12)	1.73	(3)
Engineering Aide	-		3.00	(3)	3.00	(3)	-	
Hourly City Worker	15.60	(20)	12.35	(18)	12.35	(18)	7.09	(10)
Mechanical Engineering Assistant	0.75	(1)	1.00	(1)	1.00	(1)	-	
Office Service Specialist	0.75	(1)	-		-		-	
Stores Clerk	1.20	(2)	-		-		1.00	(1)
Water System Helper	0.60	(1)	1.44	(2)	1.44	(2)	1.08	(2)
Water System Supervisor II	-		-		-		-	
Total Hourly FTE Positions	<u>24.05</u>		<u>26.19</u>		<u>26.19</u>		<u>11.82</u>	
Glendale Water & Power Total	<u>345.55</u>		<u>345.19</u>		<u>345.19</u>		<u>330.42</u>	

Notes:

* Indicates number of employees corresponding to the stated Full-Time Equivalence (FTE).