



DECEMBER 2013

MESSAGE FROM SCOTT OCHOA



*Glendale City Manager*

Happy holidays to all. Okay, that's it for the customary holiday salutations.

I would be remiss if I did not focus this article on a momentous transition taking place here in Glendale. By the middle of the month, we will offer our heartfelt congratulation, gratitude, and farewell to our friend and Police Chief, Ron De Pompa. After 36 years in local law enforcement, a distinguished career punctuated by innovations and advancements by the Department, and an unflappable sense of the public trust and accountability, Ron has created a tremendous and lasting legacy in Glendale. He is a hometown boy and always wanted to serve the community he loved so much. He witnessed the numerous changes Glendale has undergone and, at every turn, found ways to see value in a broader paradigm of what Glendale could be by fostering a policy of inclusion and opportunity for all.

Ron De Pompa is a good man, and though I have only had the pleasure of knowing him for two years, I have thoroughly enjoyed serving beside him. A

Holiday Tree Lighting!



The City of Glendale Community Services & Parks Department cordially invites you to the Holiday Tree Lighting Ceremony! Join in on the holiday cheer at City Hall's Perkins Plaza, 613 E. Broadway, on **Wednesday, December 4, from 7:00 - 8:30 pm**. The festivities will feature performances by local Glendale schools, a special visit from Santa Claus, and complimentary hot chocolate. Free parking will be available in the City Hall structure off of Wilson Ave. Learn more [here](#).

For more winter fun, check the latest [Leisure Guide](#) for activities for all ages. For additional information, email [pbetancourt@ci.glendale.ca.us](mailto:pbetancourt@ci.glendale.ca.us).

Photo of the Month!

cop with an unwavering sense of right and wrong, a love of humanity, a pride in the execution of a job well done, a laser-focused business acumen, and a great sense of humor to boot; this is a tall order to fill, yet Ron did it every day. As his lovely wife Carole and their three amazing daughters will tell you, it has not been easy. But I don't suppose it could have been. Ron has been the keeper of the flame for GPD for many years and, as the bruises and scars indicate, he has fought valiantly and successfully to keep that flame lit.

To borrow from author Harper Lee, some people are born into this world to handle life's unpleasant chores and challenges for us all; I think Ron is one of those people for Glendale and I am glad that he was there. Congratulations, Ron, and thank you, my friend.

The other half of this transition comes with Police Chief Rob Castro. Chief Castro will begin in Glendale the day after Chief De Pompa retires. Chief Castro inherits a valuable asset in the men and women of the Glendale Police Department, and he will utilize all of his skill and experience to draft a new chapter in the history of GPD. Coming from a smaller agency, I am highly confident that Chief Castro will blend his experience as a Chief of Police with the resourcefulness that a smaller agency demands in order to cast a new light on Glendale. Surrounded by expert, intelligent, and dedicated law enforcement professionals, I truly believe that he will sustain Glendale PD's momentum and provide for a seamless transition.

As we approach the end of the year, we give Chief De Pompa a joyous sendoff and welcome Chief Castro into a new year of opportunity and promise!



*Thanks to Michael O. for sharing this great photo of the Downtown Glendale skyline at dusk!*

Share your photos with @MyGlendale on [Twitter](#), [Facebook](#) & [Instagram](#) for a chance to be showcased as the Photo of the Month in the next City Connection. #MyGlendale and tag @MyGlendale to be entered.

## Holiday Refuse Collection Changes

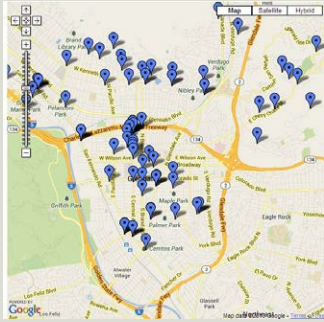


The Glendale Integrated Waste Management Division will not provide refuse collection service on December 25 or January 1. On all other holidays, refuse service will be unaffected. Between December 25 and January 3, Wednesday through Friday refuse customers will be serviced one day later. For example, customers with Wednesday service will be picked up Thursday and customers with Friday service will be picked up on Saturday. Customers with Monday or Tuesday service will be unaffected. For questions, please call the Integrated Waste Management Division at (818) 548-3916 or click [here](#).

Happiest of holidays to all!

\*\*\*\*\*

### Planning Project Updates



Sign up to receive weekly updates on planning projects in Glendale. Find out what types of applications are being submitted at the Community Development Department's Planning counter, view an interactive map of the City, and learn how to get in contact with Planning staff that can answer questions and address concerns. Learn more [here](#).

### An Inside Look at Graffiti Removal in Glendale



Click [here](#) or the video above to meet Javier Covarrubias of the Community Development Department.

Find out how to report graffiti in Glendale, meet the graffiti removal staff, and learn about the latest techniques being used to keep Glendale on the cutting edge of graffiti removal [here](#).

\*\*\*\*\*

### CALENDAR

**December 3 - Murder & Mayhem in the Crescenta Valley with Mike Lawler & Gary Keyes, 7:00 pm**  
*Central Library Auditorium*  
*222 E. Harvard St.*

The pleasant neighborhoods of the Crescenta Valley offer no hint of the many violent and heinous crimes that have

## Plastic Carryout Bag Ban - Phase 2



As of January 1, the second phase of the City's Plastic Carryout Bag Ban goes into effect. All smaller grocers, food markets, liquor stores, convenience stores, drug stores, and pharmacies will be prohibited from providing plastic carryout bags to the customers, and required to charge ten cents for each recyclable paper carryout bag, with some exceptions. Shoppers are encouraged to bring reusable bags, to avoid being charged for paper carryout bags.

For complete details about the Plastic Carryout Bag Ban Ordinance please visit the Public Works Department [website](#) or call (818) 548-3900.

Reusable bags are available for purchase at the Public Works Administration Office, 633 E. Broadway, Room 209, or at the Ginger Bremberg Integrated Waste Management Facility, 548 W. Chevy Chase Drive in Glendale. Individuals may purchase up to ten (10) bags maximum per person for 50 cents each.

## Sandbags

The winter rain season will soon arrive to Southern California. Sandbags, which are effective in diverting low levels of mud and rain water, are provided by the City for free to Glendale residents. Empty sandbags can be picked up at the Public Works Corporation Yard located at 541 W. Chevy Chase Drive and at all Glendale Fire Stations.

The City of Glendale has crews trained to respond 24 hours a day, 7 days a week should a rain-related emergency occur, but early prevention can save time, money, and property. If you have any questions or concerns, please contact the Maintenance Services Section of Public Works at (818) 548-3950.

## Convenient Tree Recycling

Recycle your Christmas tree after the holiday season with the Integrated Waste Management Division's free curbside recycling program December 26 - January 17.

To Recycle Your Tree:

- Remove all ornaments, decorations, buckets, bags, stands, bars, nails, and most tinsel. Trees that are flocked or coated with fire retardant are acceptable.
- Cut trees greater than eight feet in half.
- Single-family homes: place trees next to refuse on service day.
- Multi-family residents and businesses: place trees together in the parkway by 7:00 am on the collection day (Please do not place trees in refuse collection rooms)

To determine a property's refuse collection day or for more information, visit [www.GlendaleRecycle.com](http://www.GlendaleRecycle.com) or contact the Integrated Waste Management Division at (818) 548-3916.

## Make Room for Holiday Treasures



occurred between the San Gabriel and Verdugo Mountains. Join historians Gary Keyes and Mike Lawler as they expose the crimes and criminals that have inflicted murder and mayhem in Glendale, La Crescenta, Montrose and La Cañada Flintridge. Learn more [here](#).

**December 4 - City of Glendale Tree Lighting Ceremony, 7:00 pm**

*Parcher Plaza  
613 E. Broadway*  
See story above or click [here](#) for more information.

**December 7 - "LA Woman: Yesterday, Today & Tomorrow" Art Exhibit, 10:00 am - 3:30 pm**

*Forest Lawn Museum  
1712 S. Glendale Ave.*  
The Glendale Commission on the Status of Women and Forest Lawn Museum will host the exhibit "LA Woman: Yesterday, Today & Tomorrow." There will be a reception, boutique shopping, and a panel discussion with a question and answer session. The exhibit is open to the public until January 5. Admission and parking are free. Learn more [here](#).

**December 7 - Montrose Christmas Parade, 6:00 pm**  
*Honolulu Ave between Verdugo and Rosemont*

Attend the 37th Annual Montrose - Glendale Christmas Parade to see marching bands and Santa Claus! Click [here](#) to watch the promotional video.

**December 8 - Arthritis Foundation's Jingle Bell Run / Walk, 8:30 am**

*Alex Theatre  
216 N. Brand Blvd.*  
The Jingle Bell Run / Walk for Arthritis will bring together competitive runners and families from throughout Los Angeles County to raise funds for a cure for arthritis, the nation's leading cause of disability. Wear your holiday gear and jingle all the way for a great cause. For more information, visit [www.lajbr.org](http://www.lajbr.org) or call (323) 954-5760 extension 259.

**December 10 - Glendale College Chamber Music Ensembles, 7:30 pm**  
*Central Library Auditorium  
222 E. Harvard St.*

Musicians from the Glendale Community College Chamber Music Program will perform a free recital featuring voice,



Before scheduling a bulky item pick-up of household items by calling the Integrated Waste Management Division at (818) 548-3916, consider donating any reusable items. Visit [Earth911](#) for other donation and recycling locations.

**Goodwill Southern California**

240 N. Brand Blvd, Glendale, 818-844-5577  
1600 Colorado Blvd, Eagle Rock, 818-543-0166

**Salvation Army**

6850 San Fernando Blvd, Glendale, 818-260-9337

## Economic Indicators



As of November 15, 2013, available Economic Indicators for the City of Glendale continued to demonstrate a steady growth pattern.

At the close of the 2013 fiscal year, the City of Glendale ten-year trend for sales tax revenues evidenced a steady recovery from the recessionary low of \$25.1 million in 2010 to a high of \$31.8 million in 2013. Further momentum tied to major new stores and restaurants opened in late 2013 is expected in next year's collections.

As of the end of the second calendar quarter in 2013, the largest advances in sales tax revenues continued to be derived from entertainment categories, as Glendale strengthens as a regional destination for dining and nightlife.

As of October 2013, Glendale's advantages as a location for Class A office users was proven by a steady decrease in vacant available space at 17.3%, complained to 20.7% at the end of 2012. Glendale Class A office rents continue to be the lowest in the tri-city market. Vacant available retail space in Glendale was stable at 3.0%. Vacant industrial space was all but non-existent at 2.0%.

The median home sale price in Glendale was \$546,000 in October 2013, up 8.8% from October 2012. Neither of the tri-cities has achieved peak year sales prices from 2006 and 2007 as the housing market rebound begins to level off.

## Successor Agency Completes Final Task

violin, cello, guitar, clarinet, and piano. A night of great music at the Central Library. Learn more [here](#).

**December 11 - Reinventing Yourself in Your Senior Years with Lee Gale Gruen, 7:00 pm**  
*Central Library Auditorium*  
 222 E. Harvard St.

Lee Gale Gruen's memoir, *Adventures With Dad: A Father & Daughter's Journey Through a Senior Acting Class*, chronicles how she came to reinvent herself in her senior years. Her entertaining presentation will describe how she found a book publisher and how a senior acting class she attended with her father led to a successful acting career. Learn more [here](#).

**December 12 - The Challenges Facing Armenian Artists & Writers in Diaspora, 7:00 pm**  
*Central Library Auditorium*  
 222 E. Harvard St.

This exciting panel discussion in English will feature Vahe Berberian, Aris Janigian, Ara Oshagan, and Lory Tatoulian. Maria Armoudian will moderate. Learn more [here](#).

**December 13 - Fiesta de las Luminarias, 5:00 - 8:00 pm**  
*Historic Casa Adobe de San Rafael*  
 1330 Dorothy Dr.

Open house with music provided by Keeling Piano Studio from 5:30 - 7:00 pm.

**December 14 - Fiesta de las Luminarias, 5:00 - 8:00 pm**  
*Historic Casa Adobe de San Rafael*  
 1330 Dorothy Dr.

Open house with music provided by Crescenta Valley High School Charismatics from 6:30 - 7:15 pm.

**December 14 - Candlelight Tour of Doctors' House, 6:30 - 8:30 pm**

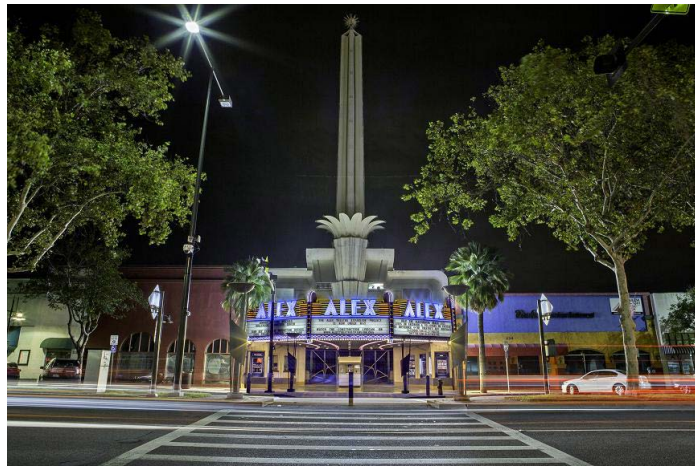
*Doctors' House*  
 1601 W. Mountain St.

Learn more about this event and the historic home [here](#).

**December 14 - "Thank you for being a Friend" Wilderness Workday, 9:00 am**

*Deukmejian Wilderness Park*  
 3429 Markridge Rd.

As 2013 comes to a close, the Parks & Open Space Foundation would like to thank all the volunteers that have helped with the park restoration during this past year. Fifteen Big Cone Firs have been generously donated by the Crescenta Valley Group of the Angeles Chapter of the Sierra Club for this special workday. Learn more [here](#).



Recently, the Glendale Successor Agency completed a major milestone in the dissolution of Redevelopment in Glendale. The Agency has been undergoing numerous reviews of its funds and assets, the final one being a [Long Range Property Management Plan](#) which reviews real property assets. The Plan describes how each former Redevelopment Agency-owned property will be disposed. Most of the property is proposed to be transferred to the City for either government use or to fulfill an existing contractual obligation; one property is proposed to be sold. The Agency is now waiting for the State Department of Finance to review and approve the plan which isn't expected until at least early 2014.

## Winter Holiday Spirit Awards



The annual [Winter Holiday Spirit Awards](#) are back! Nominate a residence or business which spreads holiday cheer through the neighborhood with their festive decorations. From poinsettia plants to wreaths and candy canes to all out winter wonderlands, let us know where to find them. Learn more [here](#).

## Winter Day Camps



December 14 - "Do You Hear What I Hear?" Night Hike, 7:00 - 9:00 pm

Glendale Sports Complex  
2200 Fern Lane

Leave the hustle and bustle behind and spend a part of this holiday season with the Parks & Open Space Foundation on a "night hike." This easy 2.5 mile trek will end with some cookies and hot chocolate. Learn more [here](#).

December 16 - Chief Robert Castro's Swearing-In Ceremony, 3:00 pm

Glendale Police Department  
Community Room  
131 N. Isabel St.

Meet Glendale's new Police Chief as he is sworn-in. Learn more about Chief Castro [here](#).

December 21 - Affordable Care Act: How Will It Affect You?, 1:00 pm

Chevy Chase Library  
3301 E. Chevy Chase Dr.

A brief informative presentation about the impact the Affordable Care Act law may have on Californians with respect to their health care and their taxes. The discussion will include available insurance coverage options and some tax and business implications. Information about the Affordable Care Act is available [here](#).

December 21 - Candlelight Tour of Doctors' House, 6:30 - 8:30 pm

Doctors' House  
1601 W. Mountain St.

Learn more about this event and the historic home [here](#).

December 24 - Christmas Eve  
All City Offices close at noon.

December 25 - Christmas Day  
All City Offices closed.



Need a place for your kids to go during winter break? Pacific Community Center and Sparr Heights Community Center are offering Winter Day Camps! Activities include arts and crafts, sports and games, movies, treats, and more. Details are available [here](#).

## Glendale's 100th Rose Float Entry *Let's Be Neighbors*



"Let's Be Neighbors" will mark Glendale's 100th entry in the 2014 Rose Parade. In recognition of the fact that Glendale has more than 5,000 acres of natural open space, Glendale's 2014 float, "Let's Be Neighbors" portrays some of the widely seen members of the wild animal community who call Glendale home.

Featured on the float is the Coyote, California Mule Deer, Red Tailed Hawk, North American Raccoon, Striped Skunk, Western Gray Squirrel, American Goldfinch, and of course the California Black Bear. In this case, the bear is represented by Glendale's most famous wildlife resident, "Meatball."

Those interested in volunteering on Glendale's Rose Float may sign up [here](#). For more information on the Float, click [here](#).

## Spark of Love



For over 20 years, the Glendale Fire Department has partnered with ABC7 to host the Spark of Love Campaign. You can support the "Spark of Love" campaign by donating unwrapped toys at Glendale's nine fire stations and at City Hall through December 24. The toys collected in the Glendale community will be distributed locally to families in need. Please help provide some cheer this holiday season.

Those who need assistance this holiday season can visit [www.glendalefire.org](http://www.glendalefire.org) for a Spark of Love application or call Brandy Villanueva at 818-548-5641.

## Holiday Safety



Half of holiday fires are due to decorations that are placed too close to a candle or heat source. Be sure to blow out candles when leaving the house and before going to bed. When picking a tree, choose one with fresh green needles that do not fall off the tree when touched. Place trees at least three feet away from any heat source and never block an exit. Remember to water the tree daily to keep it fresh. When decorating, use lights that are rated for indoor use, replace damaged string lights, turn off the tree lights before going to bed, and never decorate a tree with candles.

The Glendale Fire Department would like to wish the residents of Glendale a safe and happy holiday season! Follow the Glendale Fire Department at [@GlendaleCAFire](https://twitter.com/GlendaleCAFire).

### *STAY CONNECTED!*

**Sign up for Glendale's City Connection:**  
[www.ci.glendale.ca.us/cityconnection](http://www.ci.glendale.ca.us/cityconnection)

**Follow us on Twitter:**  
[www.twitter.com/myglendale](https://www.twitter.com/myglendale)

4844.