



## JANUARY 2014

### MESSAGE FROM SCOTT OCHOA



*Glendale City Manager*

Happy New Year!!!

Well...sort of. My Steelers started their season 0-4 and, try as they might to recover and make the playoffs, their post-season hopes were dashed by an aptly named placekicker for the Chiefs (one Ryan Succop) who missed a game winning field goal that would have aligned all of the tumblers unlocking the post-season for Pittsburgh. In fairness to Mr. Succop, however, the officials failed to flag an illegal formation by the defense (and even worse, they made a terrible call on an apparent fumble by the Chargers that would have resulted in the game winning touchdown for the Chiefs). All that said, and because you are what the scoreboard says you are, the Steelers themselves are to blame in the whole mess because they dropped several games to horrible teams during the middle of the year.

Winning just one of those games that - on paper, at least - they should have won, would have elevated their record above their 8-8 finish, putting their fate into their own hands and not the aforementioned Mr. Succop's foot. At the critical stages of those contests, however, they were not

### Glendale On The Move



GTV6 has a new show, On The Move, highlighting exciting changes in Glendale! Be sure to tune in to Charter channel 6 or check the City's YouTube channel for new episodes.

### Informational Housing Meetings



The Community Development Department's Housing Division will host three informational meetings about affordable housing. Attendees will have an opportunity to ask questions following a presentation on how to qualify for affordable housing, the housing selection process, future affordable housing projects/opportunities, and the Section 8 waiting list. Learn more by attending the January 27, January 30, or February 3 meetings. Check the Housing Division website or call (818) 548-3936 for times and locations. Free childcare will be provided during the meetings.

mentally tough enough to withstand challenge, adversity, and opposition. Though injuries ravaged them throughout the season, they were not alone in dealing with such setbacks.

They had enough talent and they had ample training; what they lacked in those games was the heart. And as valiantly as they fought in the last third of the season (winning six of eight), it was too little too late to take command of their own destiny.

And now their season is over.

As a management parable, the Steelers season is a microcosm of everything we should be wary of as an organization - unjustified confidence early on, unforeseen setbacks overwhelming our resourcefulness and resiliency, inviting a fear of failure and a lack of trust in our fundamental capabilities and systems, leading to a frantic (and exciting, if nothing else) flurry of effort, only to be weighed down to mediocrity by our previous failings.

In the City of Glendale, we endeavor to prepare people to be leaders and to have confidence in our core values and strategic goals. We take great pains to invest in people who want to be here in order to cultivate a redundancy of expertise and experience. Make no mistake - adversity is always just around the corner; but our ability to anticipate challenges and keep our balance under pressure is the difference between response and reaction, between thriving and thrashing, between success and failure. We will make mistakes, to be sure. Yet our mistakes will be errors of the head and not the heart, and we will work feverishly to shore up liabilities and failures. Further, such oversights will be obstacles on a path toward a better place, a better outcome, and a better community - and we will not be deterred from reaching these goals. Thus, our self-sufficiency will be our strength and any help we get from the cosmos will be force-multipliers.

As we head into the New Year, we are well-served to stay focused on the plentiful challenges at hand yet not lose sight of the overarching dedication to excellence that has been the hallmark of this community and organization for so long. Truly, it is this commitment to maintaining and bolstering the legacy of Glendale that helps us work

## Photo of the Month!



Thanks to Mike M. for sharing this great photo of #MyGlendale!

Share your photos with @MyGlendale on [Twitter](#), [Facebook](#) & [Instagram](#) for a chance to be showcased as the Photo of the Month in the next City Connection. #MyGlendale and tag @MyGlendale to be entered.

## Mountain Lion / Coyote Safety Living with Wildlife



The Glendale Police Department reminds residents that Glendale's hilly and mountainous areas are home to a variety of wildlife, including [coyotes](#) and [mountain lions](#). Follow these important tips to keep children and pets safe:

- Trim brush to reduce hiding places
- Don't leave small children or pets outside unattended
- Install motion-sensitive lighting around the house
- Don't allow pets outside when wildlife is most active—dawn, dusk, and at night
- Bring pet food inside to avoid attracting raccoons, opossums and other potential prey
- Do not hike, bike, or jog alone
- If you encounter a mountain lion or coyote, do not run; instead, face the animal, make noise and try to look bigger

through adversity and solve difficult problems. This pride is hard-earned and well served, and it is a central theme of the Glendale story that unfolds each year. With this heritage of achievement, with a creative and visionary City Council, and with an roster of outstanding public servants, I eagerly look forward to the New Year.

And now our year is just begun.  
Happy New Year!

\*\*\*\*\*  
**Glendale Water & Power's Guardian Program**

Some GWP customers rely on electricity to power life-support equipment in their homes. Running medical equipment round-the-clock can get expensive and raise electric bills each month. The GWP Guardian Program provides monthly bill discounts to our GWP residential customers who have household members using prescribed life-saving medical equipment or are suffering from afflictions requiring special space conditioning. To request an application for the Guardian Program, or for more information call (818) 548-3300 or visit the GWP [website](#).

**Low-Income Customer Assistance Program - Glendale CARE**

The Glendale Care program provides monthly electric bill discounts of \$13 per month to eligible low-income customers. To apply for Glendale Care please call (818) 548-3300 to request an application or click [here](#) to download the application.

\*\*\*\*\*

**CALENDAR**

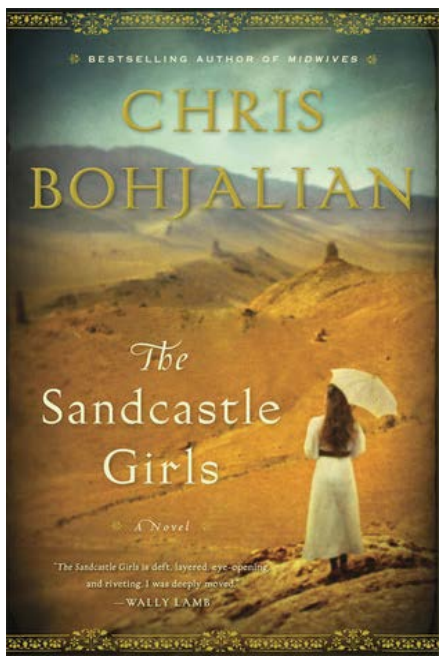
**January 4 - Trail Building 101, 8:00 am - 12:00 pm**  
*Deukmejian Wilderness Park*  
*3429 Markridge Rd.*  
Learn trail terminology, tool use and safety, tread conditions, hillside hydrology and more...  
*Learn more [here](#).*

**January 9 - Opening of the Pasadena Humane Society & Animal Care Center, 9:00 am**  
*Pasadena Humane Society*  
*361 S. Raymond Ave., Pasadena*  
The Pasadena Humane Society is taking animal welfare to a new level! The Animal Care

- by waving your arms; throw rocks or other objects
- If a mountain lion is sighted, please call the Glendale Police Department 818-548-4911

The Glendale Police Department encourages everyone to use the new [Wildlife Map](#) to keep the entire neighborhood informed on sightings in the area.

**One Book/One Glendale**  
*Read the Book - Meet the Author*



The Glendale Library, Arts & Culture Department 2014 One Book/One Glendale reading event will feature award winning author Chris Bohjalian who will discuss his epic novel of the Armenian Genocide, *The Sandcastle Girls*. Hardcover, paperback, audiobook, large type, eBook and eAudio versions of *The Sandcastle Girls* are available can be borrowed from all Library, Arts & Culture locations or [online](#).

Chris Bohjalian is the critically acclaimed author of seventeen books, including nine New York Times bestsellers. His work has been translated into over twenty-five languages and three times became movies. *The Sandcastle Girls* was a New York Times Bestseller and an Oprah.com Book of the Week. The Washington Post, Library Journal and Kirkus Reviews named it a Best Book of 2012.

The One Book/One Glendale reading event brings the community together to read and experience the same book. Read *The Sandcastle Girls* this month and join the One Book/One Glendale event on **February 27 at 7:00 pm at the Central Library**. For more information visit the [website](#) or call 818-548-2027.

**Glendale's Jewel Sparkles**

Center is newest addition to the shelter and is now open to the public. New and expanded services are available to pet owners and their four-legged friends including an affordable spay/neuter clinic, vaccinations, microchips, behavior and training classes, dog daycare, and much more! [Learn more here.](#)

**January 9 - Into the Light: The Healing Art of Kalman Aron with Author Susan Magee, 7:00 pm**  
**Central Library Auditorium**  
 222 E. Harvard St.  
 Author Susan Beilby Magee will present *Into The Light*, concerning the life of émigré artist Kalman Aron from his youth as an art prodigy in Latvia, through four years of darkness in Holocaust slave labor and concentration camps—where drawing portraits of guards for morsels of food would save him from starvation. After WWII, he made his way to Hollywood where commissions arrived from such notables as Ronald Reagan, Henry Miller and André Previn. Kalman Aron was honored in 2010 with the hanging of his iconic Mother and Child in the Los Angeles Museum of the Holocaust.  
[Learn more here.](#)

**January 10 - Compost Workshop, 8:00 - 9:00 am**  
 548 W. Chevy Chase Dr.  
 Learn to turn food scraps and yard trimmings into a valuable soil amendment at a Compost Workshop.  
[Learn more here.](#)

**January 11 - Compost Workshop, 8:00 - 9:00 am**  
 548 W. Chevy Chase Dr.  
 Learn to turn food scraps and yard trimmings into a valuable soil amendment at a Compost Workshop.  
[Learn more here.](#)

**January 11 - Riverwalk Workday, 8:00 am - 12:00 pm**  
 Glendale Narrows Riverwalk  
 300 Paula Ave.  
 Help maintain the landscaped areas along the Riverwalk with the Glendale Parks & Open Space Foundation.



Leslie Coombs Brand is often called the father of Glendale because of his influential role in the development of the city at the turn of the century. His beloved home was named El Miradero, a Spanish reference to a “high place overlooking an extensive view.” The 5,000 square foot mansion boasted a striking Moorish inspired exterior with minarets and repeating cusped arches and a contrasting late-Victorian style interior. When he died in 1925, he left his home and adjacent land to the City for use as a public park and library.

In 2012, following recommendations from a 2009 preliminary report, the City moved forward with designs from architectural firm Gruen Associates to lead the highly anticipated renovation of the Brand Library, in partnership with Offenhauser/Mekeel Architects, specialists in architectural design in authentic styles.

The [Library, Arts & Culture Department](#) looks forward to welcoming the community to the festivities when Brand Library & Art Center reopens in March 2014. See photos of the Library's progress [here.](#)

## New Year's Resolution: Going Green!

Start 2014 off with a New Year's Resolution to help the environment!

- Maximize recycling at home and work. Refer to [www.GlendaleRecycle.com](http://www.GlendaleRecycle.com) for a complete list of recyclable items.
- Maximize reusable dishware use in the New Year. *Do you have a reusable cup, plate and utensils at work for lunchtime feasts? Do you use reusable dishware at parties? Decreasing disposable dishware also decreases the amount of trash you produce.*
- Use a chipper/shredder or a mulching mower to create a valuable soil amendment from yard trimmings. The City offers a \$50 for the purchase of a chipper/shredder and a \$5 rebate on a mulching mower blade. For more information call the Integrated Waste Management Division at (818) 548-3916 or visit [www.GlendaleRecycle.com](http://www.GlendaleRecycle.com).

## Free Compost Classes in 2014

Learn more [here](#).

**January 11 - Loading Dock Book Sale, 9:00 am - 12:00 pm**  
**Central Library**  
 222 E. Harvard St.  
 Support Glendale's libraries by picking up great used books at great low prices. Book sales are hosted every second Saturday of the month.  
 Learn more [here](#).

**January 13 - 17 - Grandview Library's 50th Anniversary Celebration**  
**Grandview Library**  
 535 Fifth Street  
 Celebrate 50 years of history at the Grandview Library with these [great events](#):

- **January 13 - Mr. B!**, 6:00 pm  
 Celebrate Edgar "Mr. B" Bullington's 26 years as a Children's Librarian at the Grandview Branch as he prepares for retirement
- **January 14 - The Magic of Tony Daniels**, 3:00 pm
- **January 15 - Paint a "Selfie,"** 4:00-5:30 pm  
 Learn how to paint a self-portrait with artist Carlos Nieto III
- **January 16 - Annie Banannie's Balloon Comedy Show**, 3:00 pm
- **January 17 - Happy Birthday Party**, 3:00 pm  
 Stories, games and surprises for all ages.

**January 18 - Wilderness Workday, 8:00 am - 12:00 pm**  
**Deukmejian Wilderness Park**  
 3429 Markridge Rd.  
 Help improve Glendale's trails with a morning of weeding, watering, and planting.  
 Learn more [here](#).

**January 20 - Martin Luther King, Jr. Day**  
 All City Offices and Library Branches will be closed in observance of the holiday.

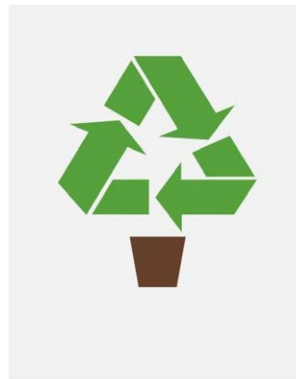
**January 21 - Los Angeles's Bunker Hill: Pulp Fiction's Mean Streets and Film Noir's Ground Zero** with Jim Dawson, 7:00 pm  
**Central Library Auditorium**  
 222 E. Harvard St.  
 When postwar movie directors went looking for a gritty location to shoot their psychological crime thrillers, they found Bunker Hill, a



Approximately 40% of residential waste can be composted. Compostable material includes yard trimmings and kitchen scraps which create a valuable soil amendment. Glendale residents receive a FREE SoilSaver bin and pitchfork when attending one of the ten compost workshops in 2014. Call the Integrated Waste Management Division at (818) 548-3916 or email [dhartwell@ci.glendale.ca.us](mailto:dhartwell@ci.glendale.ca.us) to pre-register or for additional workshop details.

- Friday, January 10
- Saturday, January 11
- Friday, March 7
- Friday, April 4
- Saturday, April 5
- Friday, May 2
- Friday, July 11
- Saturday, July 12
- Friday, August 8
- Friday, October 3

## Curbside Tree Recycling



Recycle trees after the holiday season with the Integrated Waste Management Division's free curbside recycling program until January 17. To recycle your tree:

- Remove all ornaments, buckets, bags, stands, nails, and most tinsel.
- Cut trees greater than eight feet in half
- Single-family homes: Place trees next to refuse on service day
- Multi-family residents and businesses: Place trees together in the parkway by 7:00 am on the collection day. Please do not place trees in refuse collection rooms.

neighborhood of fading Victorians, flophouses, tough bars, stairways and dark alleys in downtown Los Angeles. Jim Dawson enlarges the record of L.A. history with this grassroots investigation of a vanished place.  
 Learn more [here](#).

**January 23 - The Survivor with Author Rosemary Cohen, 7:00 pm**  
 Central Library Auditorium  
 222 E. Harvard St.  
 Author Rosemary Hartounian Cohen will present the true story of the silent Genocide of the Armenians in 1918, by Turkish Ottoman soldiers in the city of Khoy, Iran. Dr. Cohen is an award-winning author, journalist, and an accomplished artist. In addition to many books, her articles have been published in The Jewish Heritage, Jewish Journal, and The Armenian Reporter.  
 Learn more [here](#).

**January 27 - Informational Housing Community Meeting**  
 Times and locations to be announced on the [Housing website](#).

**January 30 - Informational Housing Community Meeting**  
 Times and locations to be announced on the [Housing website](#).

For more information, visit [www.GlendaleRecycle.com](http://www.GlendaleRecycle.com) or call (818) 548-3916.

## Plastic Carryout Bag Ban Phase Two



As of January 1, the second phase of the City's Plastic Carryout Bag Ban went into effect. All smaller grocers, convenience stores, and pharmacies are now prohibited from providing plastic carryout bags to the customers, and required to charge ten cents for each recyclable paper carryout bag, with some exceptions. Shoppers are encouraged to bring reusable bags, to avoid being charged for paper carryout bags.

For complete details about the Plastic Carryout Bag Ban Ordinance please visit the Public Works Department [website](#) or call (818) 548-3900.

Reusable bags are available for purchase at the Public Works Administration Office, 633 E. Broadway, Room 209, or at the Ginger Bremberg Integrated Waste Management Facility, 548 W. Chevy Chase Drive in Glendale. Individuals may purchase up to ten bags maximum per person for 50 cents each.

## Glendale Fire Department Year in Review

The Glendale Fire Department saw many changes in 2013. Deputy Fire Chief Robert Doyle retired from the department after 26 years of service. In addition to his retirement, the department promoted two new battalion chiefs, an interim deputy fire chief, and appointed a new fire marshal. Five captains and eleven engineers were promoted. Moreover, thirteen firefighters were trained and are now serving our community as paramedics. The Glendale Fire Department is in the process of hiring 16 new firefighters who will attend the recruit academy between March and June of 2014 and will join the firefighter ranks in July 2014. While these transitions were taking place, the Glendale Fire Department responded to over 17,000 incidents in 2013.

The Glendale Fire Department would like to thank the Glendale residents for their continuous support. GFD looks forward to providing the highest caliber of services to the community in 2014!

## Glendale Youth Alliance Investing in our Future Workforce



Business owners and residents are encouraged to hire Glendale Youth

Alliance participants for their temporary employment needs. The Glendale Youth Alliance has trained and qualified youth workers available to perform various tasks. All work teams are fully insured, supervised, and have their own tools and transportation. Reasonable prices and quality of work guaranteed!

**Services Available:**

- Hillside clearance
- Yard maintenance
- Landscaping
- Brush abatement and clearance
- Property clean up and general labor tasks
- Mudslide prevention work

For more information and for a free estimate, please call Ida Babayan at 818-548-3727 or email [ibabayan@ci.glendale.ca.us](mailto:ibabayan@ci.glendale.ca.us). To learn more about the Glendale Youth Alliance, click [here](#).

***STAY CONNECTED!***

**Sign up for Glendale's City Connection:**  
[www.ci.glendale.ca.us/cityconnection](http://www.ci.glendale.ca.us/cityconnection)

**Follow us on Twitter:**  
[www.twitter.com/myglendale](http://www.twitter.com/myglendale)

This is an official publication of the City of Glendale, distributed by the Public Information Office. For inquiries, please contact Tamar Hadjimanoukian, City Connection Editor: [thadjimanoukian@ci.glendale.ca.us](mailto:thadjimanoukian@ci.glendale.ca.us) or (818) 548-4844.