

CITY CONNECTION

ci.glendale.ca.us



SEPTEMBER 2013

MESSAGE FROM SCOTT OCHOA



Glendale City Manager

September is a time of transition -- summer is winding down, kids are back at school, the new fall lineup of tv shows replace the months-long stream of reruns, baseball is ending (Dodgers win the Series in five games) and football is just beginning (Steelers return to bone-crushing form). It's a time when plans are put in place that will guide us through the fall and beyond. Indeed, summer strategies become winter dreams.

Here at the City of Glendale, we are waist-deep in such plans and programs. We have a number of key community projects underway or set to begin:

- **Maryland Park** - Construction of a brand new 1/2-acre park including play equipment, exercise equipment, picnic areas and several public art features will begin this September, lasting six-months.

- **Maple Park** - Improvements to one of the city's oldest community parks will include significant expansion of picnic and play areas, new irrigation and lighting systems, and addition of outdoor exercise equipment. Construction will

National Preparedness Month



Are you prepared to evacuate your home when the next brush fire happens in Glendale? Have you stored enough food, water, and supplies for 72 hours for you and your family to use after the next earthquake? [Research](#) shows most people are not as prepared as they think for disasters. In a recent preparedness survey, 46 percent of the respondents did not have a home evacuation plan, 80 percent had not conducted home evacuation drills, and 60 percent did not know their community's evacuation route.

September is National Preparedness Month. Prepare and plan in the event you must go for three days without electricity, water service, access to a supermarket, or local services. Build a 72-hour emergency supply kit, develop a family evacuation plan, and practice your plans. Follow the Glendale Fire Department on Twitter at [@GlendaleCAFire](#) for tips on how to prepare all month long. Register with Everbridge, the City of Glendale's mass notification system, at [Glendalefire.org](#), to learn important incident information that may impact you and your neighborhood. Add 818-548-3301 to your communication plan so that you may contact the Emergency Information Center, when it is activated, to speak to City staff during an emergency response.

CERT Training

begin in November on the five-month project.

•**Brand Library and Art Center** - Along with structural and technology upgrades, a new plaza will guide visitors to the library and galleries as well as provide opportunities for outdoor art, music and special events. The Brand Mansion that was once the home of Leslie Brand, a founding father of Glendale, is being restored to its original grandeur. A robust calendar of programs and exhibits is being planned to celebrate the reopening of this unique and historic library in March of 2014.

•**Casa Verdugo Branch Library** - This project is very close to completion! The brightened interior and more open floor plan is already accommodating more active programming and attracting many new and returning customers. A celebration of the completed project is in the works.

•**Central Library Renovation Project** - A renovation of the Central Library is in the design phase. Construction is expected to begin in the spring or early summer of 2014. The east entry will be relocated to the north and south to improve the Library's visibility as a civic center in the downtown and as an anchor to the Art and Entertainment District. The plans also include more conference rooms, an upgraded auditorium, a Teen Space, a Maker Space, and a Room dedicated to the history of genocide and the resiliency of the human spirit.

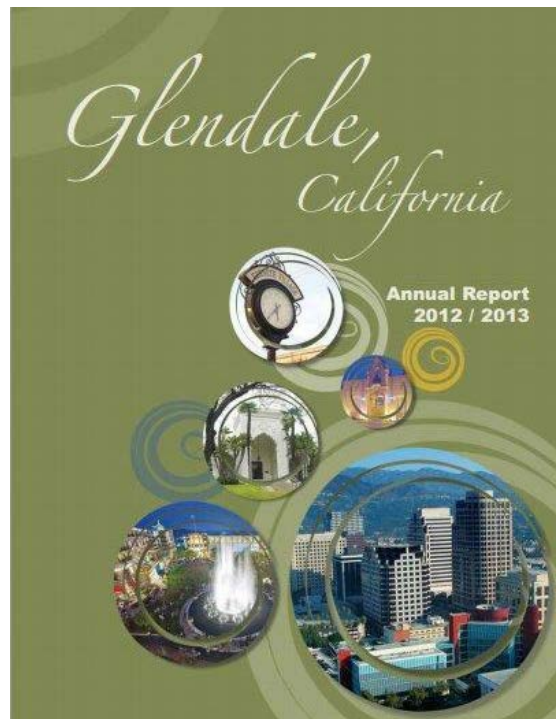
•**Deukmejian Park** - The recently restored historic Le Mesnager Barn located in the park is in the planning and feasibility phase of converting the Barn into a visitor center. This phase will refine development concepts and associated costs for the project.

•**Pacific Edison Field** - The existing natural turf at Edison Elementary school will be replaced with artificial turf to better withstand its active users. The five-month construction project will start



The Glendale Fire Department offers the 20-hour Community Emergency Response Team (CERT) training at no cost and covers topics such as fire suppression, disaster psychology, light search and research, and triage methods. The next CERT training will be held on Wednesdays, September 4, 11, 18, and 25 from 5:00 - 10:00 pm at 780 Flower Street in Glendale. If you are interested in taking the course, please call 818-548-6404 to register.

Glendale Awarded for Excellence in Financial Reports



The City of Glendale's Finance Department and Accounting staff have been awarded the Certificate of Achievement for Excellence in the completion of the Comprehensive Annual Financial Report (CAFR) for fiscal year ending June 2012. The award is granted by an independent panel of reviewers through the Government Finance Officers Association (GFOA), evaluating each city for creativity, presentation, understandability and reader appeal. The Certificate of Achievement is the highest form of recognition in governmental accounting and financial reporting. Glendale has submitted for and received the award of excellence for 18 consecutive years.

For the second consecutive year, the City of Glendale has also

in November.

•Catalina Verdugo Adobe Renovations - An expanded picnic area and a new restroom facility will enhance the historic Catalina Verdugo Adobe Park. The construction will be completed by the end of November.

•Central Avenue Rehabilitation - With anticipated completion in October 2013, the rehabilitation will include the installation of 43 street light poles and 83 twin-globe ornamental light poles; modification of eight traffic signal systems; installation of landscaped median adjacent to the Americana at Brand and the Galleria; installation of fiber optic communication system; reconstruction of over 526,000 square feet of pavement using the environmentally friendly "Cold-Mix Asphalt Recycling" process; placement of rubberized asphalt for 2 miles of streets that will use 11,620 recycled tires; planting of 183 new street trees; and the installation of bus shelters and bicycle lanes.

•Adams Hill Water Main Replacement - GWP will be replacing the existing 4" cast iron pipes to 6" and 8" ductile iron pipes. This project will replace over two miles of pipelines which will result in improvement in the water flow, pressure, and ensure capacity for fire protection.

All of these projects form the infrastructure backbone of our community. We have to maintain our investment in these assets or risk squandering the legacy that has been bequeathed to us from our predecessors: an exceptional community blessed with unique resources to afford an outstanding quality of life to the residents and stakeholders of Glendale!

Our engineers, technical professionals, project managers, boards, commissions, and City Council have spent the summer planning these important and (I dare say) inspiring projects. With September comes the season to begin making these plans realities.

received a Certificate of Excellence for the production of the Popular Annual Financial Report (PAFR) for the fiscal year ending in June 2012. The awards demonstrate the City of Glendale's commitment to concise accounting, financial responsibility, and transparency.

Sewer Lateral Responsibility



It is important that all homeowners and business owners be mindful of the condition of their sewer lateral. The sewer lateral is the pipe that connects each Glendale home or business to the City's sewer system. Poorly maintained or neglected sewer laterals can be expensive to repair when they fail. They can also result in costly backups. To properly maintain a sewer lateral, have it periodically cleaned of tree roots and other debris by a licensed plumber and never allow substances other than water, soaps, toilet paper and human waste to enter toilets or drains. For more information, watch the City of Glendale's public services announcement [here](#).

Frequently Asked Fall Recycling Questions

With Fall approaching, there will be an increase in leaves and other yard debris at my home. I have too much material for the automated yard trimmings recycling container. What can I do with this material?

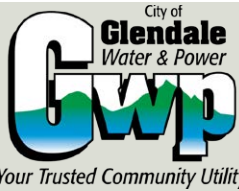
For households that continually have too much yard trimmings material, consider starting a compost bin. Free backyard compost bins are available to Glendale households that attend a compost workshop. The last two compost workshops of the year are Friday, September 6 and October 4. Please do not compact yard trimmings in automated containers. Contact the Integrated Waste Management Division at (818) 548-3916 or [email](#) for more information.

What is the proper method to dispose of hazardous waste?

The Glendale Fire Department's Environmental Management Center accepts automotive fluids, batteries, garden chemicals, needles and syringes, partially filled aerosol cans (all types), cleaning fluids, pesticides, paint, and pool chemicals. The Glendale's Environmental Management Center is located at 780 Flower Street. The Center accepts household hazardous materials on every Wednesday and Saturday (except holiday weekends) from 9:00 a.m. to 1:00 p.m. For more information, contact the Glendale Fire Department at (818) 548-3862.

The Glendale Fire Department also picks up used motor oil from Glendale residents. To arrange an appointment, please call at (818) 548-3227, or visit their [website](#).

PARKS MAKE LIFE BETTER
Stay Active Year Round
Fall Leisure Guide



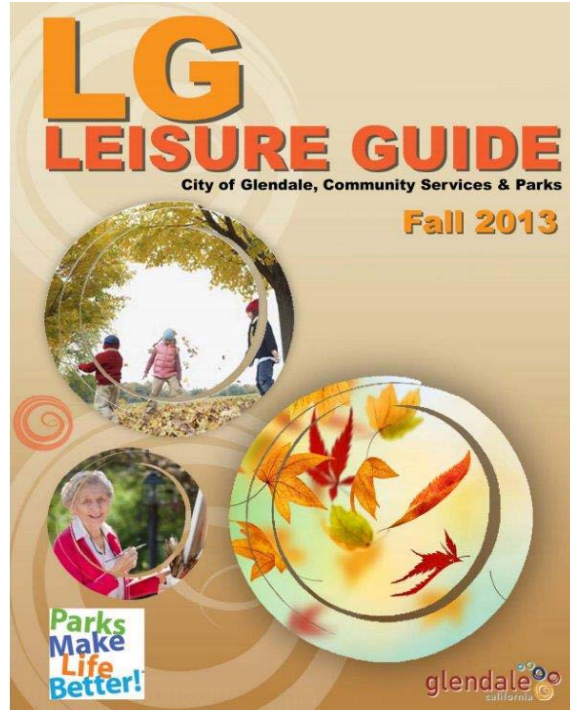
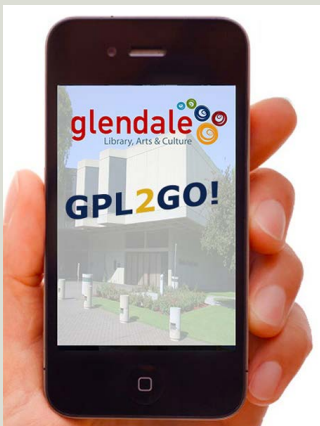
Smart Home AC Tune-Ups Program is Back

Tuning up your HVAC can help you save \$50-\$60 a year for up to six years! That's an average savings of 17% on your cooling bill. Call to have your HVAC tuned up through our Smart Home AC Tune-up program. Services are provided by Proctor Engineering certified contractors, using Proctor's unique and proprietary computerized "Check Me!" system to ensure your AC system is tuned for maximum efficiency. Call 877-422-2432 to select a certified contractor and make an appointment to have your HVAC tested. Small businesses can also take advantage of this program. For more information click [here](#).

Be a Water Wise Gardener

Glendale Water & Power in partnership with the Metropolitan Water District is offering Glendale residents free California friendly landscape classes. Residents will learn to become a more water wise gardener and discover how to create a beautiful and easy to maintain garden without running up water bills. Each class will teach residents about landscape design, how to install and maintain a smart irrigation system, and choosing the right California friendly plants. Dates for Fall 2013 have already filled up but there is room in Spring 2014! To reserve a spot please call (818) 548-3874, [email](#), or visit the GWP [website](#).

Library, Arts & Culture



The Leisure Guide includes a variety of fall programs for all ages and interests. Youth activities include a number of sports, fitness, dance, and art classes at Glendale's various community centers.

Adult programs include arts and special interest classes, exercise and wellness classes, and tennis classes for all skill levels. Senior adult programs include ongoing recreation programs, instructional classes, and special holiday celebrations. Case management services and the nutritional meals programs are also available. To see the full guide, click [here](#).

Trails & Open Space's Hot Summer



The restoration program, otherwise known as the "Third Saturday Wilderness Work Day" continues uninterrupted at Deukmejian Wilderness Park. These work days are perfect for community organizations and students needing community service hours. Volunteers should wear long pants and bring sunscreen, sunglasses, and a hat. Community members water, weed, and help beautify Glendale parks. All work days start at 8 a.m. near the Barn in Deukmejian Park.

GLENDALE2GO!

Save time with the Library's Mobile App:

- Search the catalog
- Place holds and renew items
- Browse the Library's historic photo collections
- Practice a language
- Connect to the Library Facebook pages, Twitter, and more!

Find the GPL Mobile app via your Android or Apple app stores. More information about the mobile app features can be found [here](#). Follow the Library, Arts & Culture Department on Twitter [@glendaleLAC](#).

CALENDAR

September 6 - Compost Workshop, 8:00 am - 9:00 am
Integrative Waste Management
 548 W. Chevy Chase
 Learn to turn food scraps and yard trimmings into a valuable soil amendment at a Compost Workshop. Please call Integrated Waste Management at (818) 548-3916 or [email](#) to preregister.
 Learn more [here](#).

September 7 - Free SAT/ACT Practice Test, 10:00 am - 2:30 pm
Montrose Library Branch
 2465 Honolulu Ave.
 Kaplan is offering free practice test to students. They will receive their test scores on September 16 along with tips on how to improve. Pre-registration is required.
 Learn more [here](#).

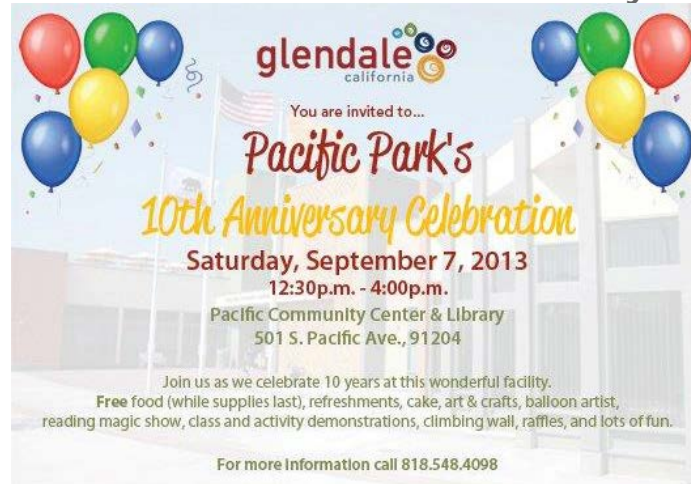
September 7 - Pacific Park's 10th Anniversary, 12:30 - 4:30 pm
Pacific Community Center & Library, 501 S. Pacific Ave.
 Celebrate with arts & crafts, activities, and refreshments!
 See story above for more info.

September 7 - I Don't Like Spiders & Snakes! 6:00 p.m. - 8:00 p.m.
Deukmejian Wilderness Park
 3429 Markridge Road
 Join the campfire program to explore spiders and snakes and some of the reasons people are afraid of these creatures. The event is free but space is limited. Call (818) 548-3795 to reserve your spot.
 Learn more [here](#).

September 12 - Meet Author Adam Raffi Kevorkian, 7:00 pm
Central Library Auditorium
 222 E Harvard St
 Masis is Raffi Kevorkian's first

The Trail Maintenance Crew recently completed the restoration of the Crescenta View Trail, marking the final chapter in the reconstruction of all the trails in Deukmejian Park which were damaged by the Station Fire. After the rains of 2009/10, most, if not all of the parks trails were impassable. The Trail Crew has done an outstanding job of making the trails safe. All Trails and Open Space Programs are sponsored by the Glendale Parks & Open Space Foundation. For more information call (818) 548-3795 or click [here](#).

Pacific Park's 10th Anniversary



Pacific Park's 10th Anniversary celebration is set to take place on Saturday, September 7 12:30 - 4:30pm at Pacific Community Center and Library. Join us as we celebrate 10 years at this wonderful facility, 501 S. Pacific Ave.

The 10th Anniversary celebrate will feature free food (while supplies last), refreshments, cake, arts & crafts, a balloon artist, a reading magic show, class and activity demonstrations, Glendale Rocks! climbing wall, raffle prizes and lots of fun. For more information call 818-548-4098.

Summer Isn't Over Just Yet



It may be back to school time, but summer isn't over just yet! During the month of September, Pacific Community Pool will remain open on the weekends from 11:00 - 6:00 pm for recreation swim. Visit the pool and keep the family cool and refreshed. Wading pools are another great way to add variety to your party in the park and reservations are still being accepted. For event reservations, please contact [Ryan Hairapetian](#) by calling (818) 937-7434.

Glendale Youth Alliance, Call for Art

novel, a heart-warming tale of love, tragedy, humor and greed-and the decisions one makes when few choices exist. Masis offers a rare glimpse of present-day Armenia, a dynamic metropolis rich with luxury cars, outdoor markets and medieval churches nestled alongside high-rise apartment complexes.
 More info [here](#).

September 14 - Mobile Technology Class, 10:00 am - 12:00 pm
Central Library, 222 E Harvard
 Discover how easy it is to use your mobile device to download eBooks, search the Library catalog and learn a new language. Bring your own device or borrow one of the Library's iPads.

Register before September 6. For more information, please contact [Keith Kesler](#) at 818-548-6450

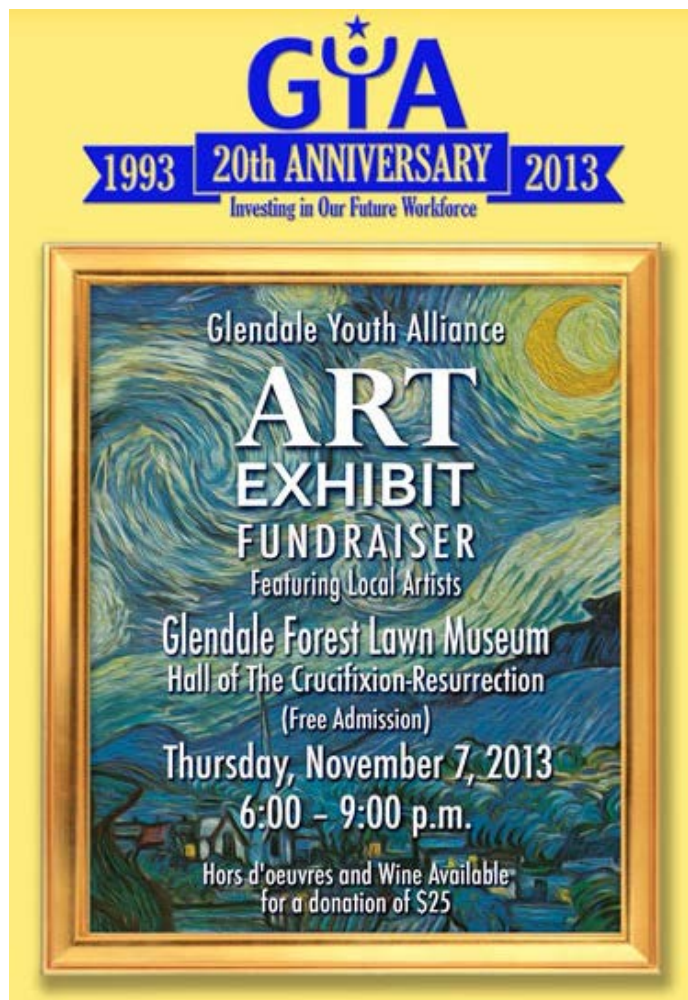
September 14 - Loading Dock Book Sale, 9:00 am - 12:00 pm
Central Library Loading Dock 222 E. Harvard St.
 The Friends of the Library raise money to support Library programs and collections.
 More info [here](#).

September 21 - Third Saturday Wilderness Workday, 8:00 am - 12:00 pm
Deukmejian Wilderness Park 3429 Markridge Road
 Join the monthly workday crew as they water young trees and continue remove weeds in the park.
 More info [here](#).

September 21 - Opera Talks, Carmen, 2:00 pm
Central Library Auditorium 222 E Harvard St
 Speakers from the Los Angeles Opera Speakers Bureau will discuss Carmen as part of the series focusing on the magical and powerful world of opera.
 Learn more [here](#).

September 28 - Mobile Technology Class, 10:00 am - 12:00 pm
Central Library, 222 E Harvard
 Second offering of the course, see September 14 event for more information.

September 28 - Bolis Screening with Screen Writer, 7:00 pm
Central Library Auditorium 222 E Harvard St
 Eric Nazarian's film tells the story of Armenak Mouradian, an Armenian oud musician from the Diaspora who travels to Istanbul to find his grandfather's oud shop and a family heirloom

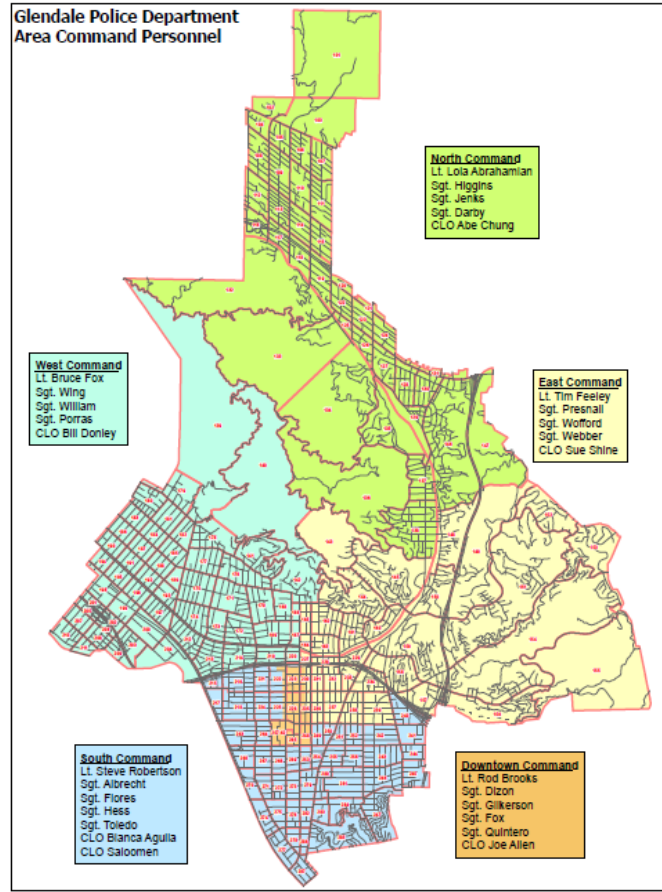


Glendale Youth Alliance's second Art Exhibit Fundraiser will be held Thursday, November 7, 2013. The evening of art and culture is expected to host over 300 guests and 100 pieces of art to raise funds for Glendale's youth workforce.

Artists are invited to submit their work by the **September 13 deadline** for the opportunity to mingle with local art patrons as well as other artists, describe their work, and make contacts for potential future sales. A program book will be distributed to all event attendees that will include the artist's biography and a picture and description of the artist work. Please visit the [GYA website](#) or contact [Tina Osborn](#) at (818) 548-82714 for the "Call for Artist Overview" and proposal form.

Glendale Police Department Introduces New Area Commanders

that disappeared during the Armenian Genocide. The film is in English, Turkish and Armenian. Running time is 20 minutes. See story above or click [here](#).



In 2009 the Glendale Police Department implemented an Area Command service delivery model. The objective of this command structure is to address crime issues and improve quality of life through accountability, professional responsibility, and strategic utilization of our limited police resources.

The Glendale Police Department recently restructured the Area Commanders and Community Lead Officers for each of Glendale's five districts. The Commanders have introduced themselves and provided their biographies on the Department's Area Commander page. To learn about the Department personnel that oversees your neighborhood, please click [here](#).

Brand Library Renovation Update Pocket Doors and Leaded Glass



Two well-preserved pocket doors are among the discoveries found during the renovation of the 1904 Brand Mansion. These space saving doors were used to close off sitting rooms and dens in Victorian era homes like the Brand mansion. There was a strong suspicion that the doors existed, but their condition was a pleasant surprise. They are still functional and other than replacing the hardware, only minimal refinishing and repair is required. The light oak finish on the parlor doors glows, while the doors between the living room and the dining room are actually two doors sandwiched together. The side that faces the living room is medium oak; the other side is solid mahogany. Additionally, two beautiful leaded glass windows have been reinstalled in the Tower. Judson Studios in Highland Park, one of the world's premier providers of architectural glass, repaired and cleaned them and they now sparkle with the light, producing a rainbow in the facets. Similar windows can be found throughout the mansion.

Please visit the website www.brandlibrary.org or [Facebook page](#) for renovation updates and photos.

STAY CONNECTED!

Sign up for Glendale's City Connection:
www.ci.glendale.ca.us/cityconnection

Follow us on Twitter:
www.twitter.com/myglendale

This is an official publication of the City of Glendale, distributed by the Public Information Office. For inquiries, please contact Tamar Hadjimanoukian, City Connection Editor: thadjimanoukian@ci.glendale.ca.us or (818) 548-4844.