



JUNE 2014

**MESSAGE FROM
SCOTT OCHOA**



Glendale City Manager

We begin June with a relatively early adoption of the City's fiscal year 2014-15 budget. With the special municipal election on June 3rd to fill the Council seat vacancy originally created last year, and with uncertainty from the County of Los Angeles (which is running this election for us) as to when the election results would be finalized and certified, it simply made the most sense to bring the budget adoption in early June. What's more, we have characterized this as a "two-year budget." In an effort to free up capacity within the organization to make investments in people and programs, the City Council has allowed us to explore a separation incentive not unlike ones utilized in the private sector. It will facilitate employees' transition into retirement or other career opportunities. The net result is an evolved organization that will take shape as employees separate in the late summer.

Presuming, respectfully, that folks who take the incentive are fully willing and wanting to do so, the difficult part from an organizational perspective is the uncertainty. That is, we do not know today, with certainty,

GWP Proposes New Water Rates



On Tuesday, May 13, City Council approved Glendale Water & Power's (GWP) request to issue a Proposition 218 notice to increase water rates. GWP has mailed out the notice to all customers proposing a four year water rate increase of 5%, 4%, 4%, 4%. GWP will hold a series of interactive public meetings and provide more detailed information regarding the proposed water rate adjustments. For more information on the proposed rates [click here](#).

- Wednesday, June 4, 6:00 - 7:30 pm**
Sparr Heights Community Center, 1613 Glencoe Way, 91208
- Thursday, June 5, 6:00 - 7:30 pm**
Police Community Room, 131 N. Isabel St., 91206
- Wednesday, June 18, 6:00 - 7:30 pm**
Pacific Edison Community Room, 501 S. Pacific Ave, 91204
- Thursday, June 19, 6:00 - 7:30 pm**
Boy Scouts of America, 1325 Grandview Ave., 91201

Customers may also ask questions by emailing GWPratequestion@glendaleca.gov. The questions and responses will be posted on GlendaleWaterAndPower.com.

Annual Water Quality Report

The Consumer Confidence Report (CCR) is an annual water quality report that the Safe Drinking Water Act requires Glendale Water & Power (GWP) to mail to all customers by July 1 every year. The purpose of the report is to inform customers about the quality of the drinking water, where it comes from, how it gets to Glendale homes, and the importance of protecting drinking water sources. In an effort to save resources and money, the California Department of Public Health now allows for the electronic distribution of the CCR to customers. The CCR will be available electronically on July 1 on the GWP [website](#). Select the 2013 Water Quality Report link in the middle of the page. If you prefer the CCR to be mailed to you, please contact GWP at (818) 548-3300.

June 3 Special Election

what this organization will look like come September. Depending on who takes the incentive, whether or not a given position is re-filled and when, and the skills and abilities of our future workforce, the City of Glendale will be a different organization. In this way, the fiscal year 2014-15 budget will be an entrée to the following year, and our "New Normal" will be redefined...again.

This begs the question: Is such a reorganization necessary? Must we proactively evolve yet again?

Make no mistake - Glendale is secure and rock solid. Blessed by its traditionally fiscal conservative profile, City Councils and administrations have historically been diligent and responsible. Yet the crushing impact of the Great Recession was felt significantly, even here. Sometimes it is hard to appreciate the resiliency of the staff and the wisdom of the Council in the context of the recession because such impacts are like body-blows to a prizefighter - hard to see on the surface, but painful and long-lasting nonetheless.

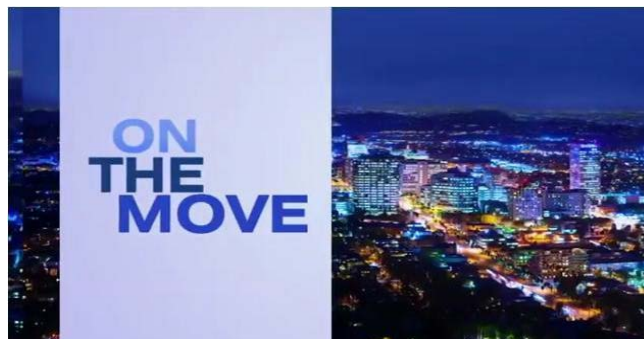
Glendale is operationally balanced, meaning that we have the capability to pay our bills, operate our systems and deliver an outstanding quality of life to our residents and businesses. That said, however, Glendale is not yet structurally balanced, meaning that we have systemic shortcomings in our organizational apparatus - we don't yet put enough money into technology upgrades and investments, we are slowly eliminating a deficit in our Workers' Compensation Fund, we are phasing in increases to our fleet replacement fund. Further, with our employees agreeing to increase their share of the cost of their own employment, we are falling out of alignment with the market for high-quality employees. To be sure, all of our line departments - from public safety to infrastructure maintenance to leisure services - have felt the sting of the Great Recession. To the credit of the City Council and employees, issues that could be put off or delayed were postponed in favor of the most pressing needs. Generally, the calculation hovered around the anticipated impacts to our customers; important but less exciting investments within the



On Tuesday, June 3, residents will have the opportunity to vote for one of the five candidates running to fill a council seat vacated by City Treasurer Rafi Manoukian. Also on the ballot is Measure G, which would reform the election and council appointment process. Visit GlendaleVotes.org for information about the candidates and issues.

Polls will open at 7:00 am and close at 8:00 pm. Residents are encouraged to check GlendaleVotes.org to find polling locations, as the County of Los Angeles has changed six of the locations in Glendale. If you are unsure of your polling location after checking online, ask to vote provisionally. Thank you for voting and expressing yourself at the ballot box!

Glendale *On The Move*



[GTV6](#) has a new show, *On The Move*, which highlights exciting changes in Glendale! This month's episode will showcase the Great American Clean Up and utility box murals, how to sign up to receive emergency notifications, and an update on the Museum of Neon Art. Be sure to tune in to Charter channel 6 or check the City's [YouTube](#) channel for new episodes.

Photo of the Month



organization were deferred. Like most any business organization, the City has had to prioritize its obligations and address its needs at the intersection of "what can lawfully be done?", "what is most pressing?" and "where do we get the greatest bang for our buck?" In plotting a long-term business / organizational strategy along these axes, the City of Glendale has weathered the worst of the recession. And though we are still locked in a heated battle with the State of California Department of Finance over repayment loans due to the City tied to the redevelopment dissolution, I feel confident that Glendale is certainly on the right track.

All this said, as a business organization, the City of Glendale requires the capacity and flexibility to structure itself to best meet the challenges on the horizon. As an operationally balanced organization, we definitely can muddle along; addressing challenges as they arise year to year. Conversely, such a provincial existence often acts as blinders to new opportunities; and, in a service industry like government, it saps resources and hemorrhages talent and skill to other organizations that are taking the steps that we are fearful to take. Thus, the answer to the question, "does the City need to restructure again?" is resoundingly "yes" - if we are interested in preserving quality services and programs for our residents and customers over the long term. While a hand-to-mouth existence can satisfy the basic needs of this organization and community today, it is a progressive and forward-leaning model that will secure our tomorrow. And, if we are going to make such strategic adjustments, if we have studied and are comfortable with the range of potential outcomes, then I believe it is important that we "run to the contact" and execute our plans forthwith.

Fiscal year 2014-15 will be challenging, no doubt. But such challenges both build and reveal character, and it is this resilient and purposeful character that defines Glendale.

CALENDAR

June 3 - Election Day!
7:00 am - 8:00 pm
See story above and visit GlendaleVotes.org to learn

Thank you to James M. for sharing this great photo at 550 North Brand of the many ways to get around #MyGlendale's Downtown!

Share your photos with @MyGlendale on [Twitter](#), [Facebook](#), and [Instagram](#) for a chance to be showcased as the Photo of the Month in the next City Connection. Include #MyGlendale and tag @MyGlendale to be entered.

Pedestrian Safety: Look2Live



The City of Glendale continues to have an unacceptable number of automobile / pedestrian traffic collisions. The demographic of the individuals in these fatal collisions has consistently remained Glendale's older pedestrian population. Speeding, distracted driving, and jaywalking pedestrians are significant problems that endanger the drivers and pedestrians of our City. In an effort to increase community partnerships in disseminating a critical message, Mayor Zareh Sinanyan has created a public service announcement with a plea to educate each family member on the dangers of improperly crossing a street. [Click here to watch the video.](#)

Cruise Night Car Registration



Southern California's most popular car show is returning for its 21st year on **Saturday, July 19 in Downtown Glendale!** Register to showcase your pre-1979 car by clicking [here](#), or by calling (818) 548-2752 and join 350 other classic cars on Brand Boulevard. Headlining this year is Abbey Road and The Kingsmen - Celebrating the 50th anniversary of "Louie Louie." More information on this free family-friendly event is available on GlendaleCruiseNight.com.

For the first year ever, Glendale will also offer a **Fireworks Spectacular** at the end of the evening! When planning Fourth of July

more.

June 4 - GWP Proposed Water Rate Community Meeting, 6:00 - 7:30 pm
Sparr Heights Community Center, 1613 Glencoe Way
See story above or click [here](#) to learn more.

June 4 - PopUp! Sheldon and Cunnane Concert, 11:00 am - 1:00 pm
400 - 450 North Brand Boulevard Courtyard
An outdoor concert series will be presented by Cushman & Wakefield and Glendale Arts Wednesdays in June. Bring lunch and enjoy the music. Learn more [here](#).

June 5 - Pedestrian & Driving Safety Workshop, 10:00 am
Central Library Auditorium 222 East Harvard Street
The first in a series of Survival Skills Workshops for Glendale residents will focus on pedestrian and driving safety for older Armenian speaking adults. Presented by Glendale Police Department Community Services Officer Armen Garabedian. Learn more [here](#).

June 5 - GWP Proposed Water Rate Community Meeting, 6:00 - 7:30 pm
Police Department Community Room, 131 North Isabel Street
See story above or click [here](#) to learn more.

June 6 - Free Concert Series: AlmaNova Duo, 7:00 pm
Brand Library & Art Center 1601 West Mountain Street
The Arts & Culture Commission and Brand Associates will present free concerts all summer on the Brand Library Plaza. AlmaNova Duo will perform original works evoking the sounds, rhythms and melodies of Eastern Europe. The Plaza Series will run Fridays through September 26. See full schedule [here](#).

June 7 - Experimental Forest Visit, 9:00 am - 12:00 pm
Verdugo Mountains
Volunteer to keep Glendale's parks and trails beautiful by watering and weeding. Call (818) 548-3795 to RSVP and learn more.

June 7 - Glendale Fire Foundation Walk in Fashion, 1:00 - 5:00 pm
Bloomington's, Glendale Galleria, 100 West Broadway
See story above or click [here](#) to learn more.

June 8 - Ecos de España: Spanish Classical & Flamenco

celebrations, remember lighting fireworks is not only dangerous, but illegal in the city of Glendale. Enjoy a free, and most importantly safe, fireworks spectacular just a few days later during the July 19 Cruise Night!

There are also great **sponsorship opportunities** that will promote your business at the event and on all event publicity items! To become a sponsor please call (818) 548-3813.

X-Fitness: Free Program for Teens

COMMUNITY SERVICES AND PARKS DEPARTMENT PRESENTS
X-FITNESS 360

3 DAY, 60 MINUTES
TUESDAY-THURSDAY

Pacific Community Center
501 N. Pacific Ave. Glendale

FREE PROGRAM FOR TEENS - 13-17

For more information please call Jackie at: **818-937-7243**

Glendale Community Services & Parks Department is hosting a free fitness program for teens ages 13 - 17 at the Pacific Community Center every Tuesday, Wednesday, and Thursday. Get in shape with X-Fitness 360, 3 days a week, 60 minutes a day! For more information please call (818) 937-7243. To learn about other [great programs for kids, teens, and adults](#), check Glendale's Leisure Guide.

Camp Rosie Registration Open



Camp Rosie, the Commission on the Status of Women's (CSW) business and leadership skills development camp, empowers teens to make good personal, educational, financial, and career choices so they can achieve self-sufficiency, career satisfaction, and long-term financial security. It is offered to middle and high school students between 12 and 18 years with priority to low income families within Glendale.

The **two free sessions** will be offered at the Pacific Community Center, 501 South Pacific Avenue in Glendale.
Session One: June 16 - July 3, Monday - Thursday, 12:30 - 5:30 pm

Music & Dance, 2:00 pm
Central Library Auditorium
 222 East Harvard Street
 A family event featuring Susana Elena, Albertosy Espinoza and Almer Imamovic.
 Learn more [here](#).

June 8 - Los Angeles Horn Trio Sunday, 2:00 pm
Brand Library & Art Center
 1601 West Mountain Street
 The Brand Associates Music Series continues with a performance of the Brahms Horn Trio in addition to music by Duvernoy, Ganne and Piazzolla.
 Learn more [here](#).

June 11 - PopUp! Maggie McClure Concert, 11:00 am - 1:00 pm
 400 - 450 North Brand Boulevard Courtyard
 An outdoor concert series Wednesdays in June. Bring lunch and enjoy the music.
 Learn more [here](#).

June 11 - Volunteer Opportunity for High School Students, 4:00 - 6:00 pm
Central Library Reference Desk
 222 East Harvard Street
 High school students can earn up to 6 hours of volunteer credit over the summer by helping the Friends of the Library set up for their monthly book sale!
 Learn more [here](#).

June 13 - Free Concert Series: AllDayNight, 7:00 pm
Brand Library & Art Center
 1601 West Mountain Street
 Free concerts all summer on the Brand Library Plaza. AllDayNight will perform original music and songs in French, Polish, and English.
 See full schedule [here](#).

June 13 - On the Trail of Armenian Women's History, 7:00 pm
Central Library Auditorium
 222 East Harvard Street
 Sona Zeitlian will discuss her new comprehensive study of Armenian women from goddesses to modern times, reflecting national values and the prominence of women. The presentation will be in Armenian.
 Learn more [here](#).

June 14 - Riverwalk Workday, 8:00 am - 12:00 pm
Glendale Narrows Riverwalk
 400 Paula Avenue
 Volunteer to help maintain the landscaped areas of the Los Angeles River by watering and weeding. Call (818) 548-3795 to RSVP and learn more.

June 14 - Loading Dock Sale, 9:00 am - 12:00 pm

Session Two: July 7 - July 31, Monday - Thursday, 12:30 - 5:30 pm

For applications, please click [here](#). For questions, please email women@glendaleca.gov or call (818) 548-2000.

Student Ex-Officio Commission Members

The City of Glendale Commission on the Status of Women (CSW) is seeking two new [Student Ex-Officio members](#) to serve on the CSW for one year from September 2014 to August 2015. The Commission is looking for students who are high school juniors or above living or attending school in Glendale, dedicated to the Glendale community, and interested in women's issues. The Student Ex-Officio position affords students invaluable experience in local government and encourages community service by working on contemporary, relevant issues that affect all women in our community.

The Commission meets on the second Monday of each month at 5:30 pm and organizes many events throughout the year. For more information and/or questions, please call (818) 548-2000 or email women@glendaleca.gov. Please submit [an application](#), along with a 250-500 word Statement of Purpose and Interest, and two Letters of Recommendation by **Friday, July 11, at 5:00 pm**.

Firefighters Walk in Fashion



More than two dozen Glendale firefighters will model the latest men's fashions at the inaugural Glendale Firefighters Walk in Fashion show on Saturday, June 7. All models will be exclusively dressed by luxury retailer Bloomingdale's. The *Glendale Firefighters Walk in Fashion* is more than a fashion show - the entire fashion event is a way for the community to show its appreciation those who help protect the community while facing danger battling fires as well as assisting those in need. After the show, Bloomingdale's will host an in-store shopping event featuring a variety of exciting activities hosted by the firefighters including a special appearance for kids by Sparky, the firefighter mascot. Bloomingdale's will donate 10% of the sales from total in-store purchases made between 1:00 - 5:00 pm by supporters at the event to the Glendale Fire Foundation.

Protect Your Home From Brush Fire Damage

Central Library
 222 East Harvard Street
 Support Glendale's libraries by picking up great used books at great low prices. Book sales are hosted every second Saturday of the month.

June 15 - Dance Series:
Lineage Dance, 2:00 pm
Brand Library & Art Center
 1601 West Mountain Street
 The Brand Associates Dance Series will host their second performance in the series.
 Learn more [here](#).

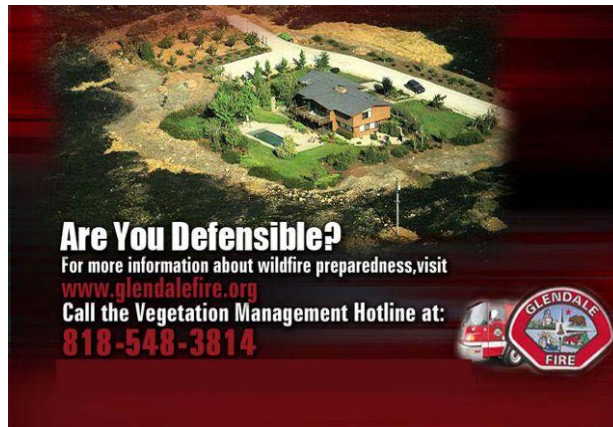
June 17 - Teens Summer Reading: Hunger Games, 2:00 pm
Central Library
 222 East Harvard Street
 Read for fun this summer and enjoy great events like the Hunger Games Marathon. Teens must be 13+ to watch.
 Learn more [here](#).

June 18 - PopUp! Michael Bradley Concert, 11:00 am - 1:00 pm
 400 - 450 North Brand Boulevard Courtyard
 An outdoor concert series Wednesdays in June. Bring lunch and enjoy the music.
 Learn more [here](#).

June 18 - GWP Proposed Water Rate Community Meeting, 6:00 - 7:30 pm
Pacific Edison Community Room, 501 South Pacific Ave
 See story above or click [here](#) to learn more.

June 19 - GWP Proposed Water Rate Community Meeting, 6:00 - 7:30 pm
Boy Scouts of America
 1325 Grandview Avenue
 See story above or click [here](#) to learn more.

June 19 - Someday Is Now: The Art of Corita Kent, 7:00 pm
Brand Library & Art Center
 1601 West Mountain Street
 Author and curator Michael Duncan, with Alexandra Carrera, Director of the Corita Art Center, present their new book, a full-scale survey of the work of the innovative artist, activist, and teacher.
 Learn more [here](#).



The Glendale Fire Department encourages residents to help protect homes from brush fires by removing dead trees and debris and following brush clearance standards. There are three zones surrounding your home:

- Zone A: located 0 - 5 feet from home. The purpose of this zone is to have the least flammable type of landscaping immediately adjacent to the house to prevent ignition and direct exposure from flames.
- Zone B: located 5 - 30 feet from home. This zone provides an area where firefighters can defend your home and where fuels have been substantially reduced.
- Zone C: located 3 -100 feet from home. The concept involved in this zone is to reduce fire intensity and flame length by modifying the native vegetation.

To learn more about proper brush clearance, please click [here](#) or follow [@GlendaleCAFire](#) on Twitter.

West Nile Virus



In May, the Greater Los Angeles County Vector Control District (GLACVCD) confirmed the first West Nile Virus (WNV) positive mosquito sample detected in Los Angeles County this year. This positive sample is a clear indicator that mosquito season has begun and WNV is present. When infected with WNV via mosquito bites, some people can develop a serious neurological illness. The City of Glendale encourages residents to protect themselves from WNV with mosquito repellent containing EPA-registered ingredients such as DEET and Picaridin. Most mosquito activity occurs in the early morning or at dusk in the months of July - September. Residents should check that all screens on windows and doors fit tightly and are free of holes. It is also advisable for residents to abate any standing water on their property. Standing water on private property, such as a neglected swimming pool, can be reported to Neighborhood Services at (818) 549-3700. Mosquito activity can be reported to GLACVCD at (562) 944-9656.

June 20 - Free Concert Series:
PCH Band, 7:00 pm
Brand Library & Art Center
 1601 West Mountain Street
 Free concerts all summer on the Brand Library Plaza. PCH Band will recreate rock's greatest artists.
 See full schedule [here](#).

June 21 - Wilderness Workday, 8:00 am - 12:00 pm
Deukmejian Wilderness Park
 3429 Markridge Road
 Volunteer to help maintain the hiking trails of Deukmejian Park by watering and weeding. Call (818) 548-3795 to RSVP and learn more.

June 25 - PopUp! Michael Quest Concert, 11:00 am - 1:00 pm
 400 - 450 North Brand Boulevard Courtyard
 An outdoor concert series Wednesdays in June. Bring lunch and enjoy the music.
 Learn more [here](#).

June 25 - Armenian Kesaria/Kayseri & Cappadocia, 7:00 - 8:30 pm
Central Library Auditorium
 222 East Harvard Street
 Professor Richard Hovannisian will discuss the Armenian communities of Kesaria/Kayseri and Cappadocia. The presentation is in English, with a summary in Armenian.
 Learn more [here](#).

June 27 - Free Concert Series: Spacious Vision Project, 7:00 pm
Brand Library & Art Center
 1601 West Mountain Street
 Free concerts all summer on the Brand Library Plaza. Spacious Vision will perform American poetry set to music.
 See full schedule [here](#).

June 29 - Krechknovsky-Loucks Duo, 2:00 pm
Brand Library Recital Hall
 1601 West Mountain Street
 Violinist Iryna Krechkovsky and pianist Kevin Kwan Loucks will play Debussy, Saint-Saëns, Brahms, and Gershwin. Iryna will play the Baumgartner Stradivarius violin on special loan from the Canadian Council for the Arts.
 Learn more [here](#).

Glendale Youth Alliance Receives Summer Employment Funding



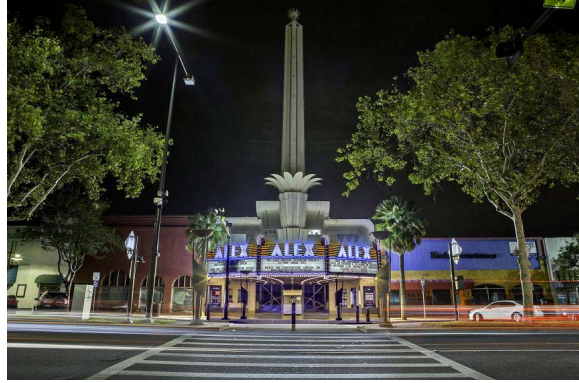
The Glendale Youth Alliance (GYA) received an allocation of \$188,100 in funding from the Verdugo Workforce Investment Board (WIB) to launch a pre-summer employment and training program for at-risk youth in the community. The WIB received the funding from the Los Angeles County Community and Senior Services Department, which utilized its allocation of CalWORKS (welfare) funds to launch the project. GYA will conduct the pre-summer program from April 1 through June 30 for 100 youth whose families are receiving CalWORKS. Each youth will receive soft skills training, as well as paid job experience of 120 hours at \$9 per hour. Starting July 1, GYA will conduct its regular summer youth program with funding allocated by the WIB. To learn more about GYA, please click [here](#).

Protecting Indigenous Trees



The indigenous oak, bay, and sycamore trees within Glendale are natural aesthetic resources which help define the character of the City. These trees are unique because of their size and beauty, and it is pertinent to the public interest, health, and welfare that these trees be protected. These natural resources counteract air and noise pollution and minimize soil erosion and related environmental damage. Read Glendale's ordinance on indigenous tree care, penalties, and responsibilities as they relate to tree owners, developers, and tree companies [here](#).

Agency Plan Approved



The law that eliminated all California redevelopment agencies requires each agency to prepare a Property Management Plan that describes how the former agency will dispose of its properties. In Glendale, most agency properties were long slated for specific development projects and can now finally move forward with the Department of Finance's approval. Three properties are slated to be sold: a parking lot at Broadway/Louise, the Maryland Exchange retail spaces, and the underlying property below the Americana parking structure. To view the Property Management Plan, [click here](#). For further information, email Cassandra Pruett at cpruett@glendaleca.gov.

STAY CONNECTED!

Sign up for all of Glendale's [Email Newsletters](#)

Follow us on [Twitter](#), [Facebook](#), & [Instagram!](#)

This is an official publication of the City of Glendale, distributed by the Public Information Office. For inquiries, please contact Tamar Hadjimanoukian, City Connection Editor: thadjimanoukian@glendaleca.gov or (818) 548-4844.