

[Click here to view this message in your browser.](#)



CITY CONNECTION

CONNECTING TO THE COMMUNITY



Click to Navigate: [Calendar](#) | [Contact Us](#) | [Newsletters](#) | [Holiday Closures](#)

This publication is brought to you by Mayor Paula Devine, Councilmembers Vartan Gharpetian, Ara Najarian, and Zareh Sinanyan.

February 2017

Message From Scott Ochoa



Glendale City Manager

It's February, it's Sunday, and it's game day. The word of the day is "catch." As I'm watching Jones and Edelman make their insane catches (They would've caught Lady Gaga if she fell from the sky), I catch myself thinking about all of the combined efforts put into the biggest game of the year. Although the game typically runs with no evident interruptions, I'm sure that isn't the case behind the scenes.

Just like the work it takes to create a successful Super Bowl event, the health of a community requires the same. A holistically healthy community is the result of a large number of factors that span the social, economic, political, physical, and



Glendale *On The Move*

GTV6's newest episode of *On The Move* is now available! In this episode, we'll check out the newly opened Palmer Park, learn about how you can stay fit, check out the new PulsePoint app, and so much more! Be sure to tune in to Charter channel 6 or check the City's [YouTube](#) channel for new episodes.

Watch each segment here:



environmental spheres. The health of a community, like that of an individual, depends on far more than freedom from pain or disease.

How do you actually put these components together to create a healthy community? There's no one way to do that - it depends on your community, but here in Glendale, it means working with community partners side by side, combining our best assets and skills to improve the health and quality of life of those who live and work in Glendale.

The Glendale Healthier Community Coalition, a group that has brought together organizational and individual community members from all aspects, has embarked on an initiative called "We Own the Health of Our Community." This requires leadership from every sector of our community - public, private, and non-profit.

A healthy community is one in which all systems work well (and work together), and in which all residents and visitors enjoy a good quality of life. This means that the health of a community is affected by a variety of factors such as programming, education, financial stability, safety, cleanliness, buildings and spaces to name a few.

Some of these factors can be created by policies, some by community effort, and some only by changes in behavior. Glendale makes being a healthy community a priority by addressing the issues most important to our community members and strengthening community action. Glendale's Collective Impact Initiative is helping us come together as a community to accomplish what individual organizations can't achieve by themselves. To support the effort, Coalition members have received several major grants to address chronic diseases related to diabetes risk in the greater Glendale community. Preliminary findings confirm that among 1,500 people screened, about 50% show risk for diabetes, and over 20% are at risk for cardiovascular disease. This is cause for significant concern, because diabetes is frequently interrelated with heart disease and cancer.

Although diabetes and heart disease seem unrelated to factors such as financial stability or the safety of our community, these factors in



Railroad Quiet Zone Now in Effect

Through the combined effort of Public Works staff, railroad authorities, and community organizations, the City of Glendale established its first railroad quiet zone. The zone is along the Metrolink Antelope Valley Line at the Flower Street, Grandview Avenue, and Sonora Avenue crossings. A railroad quiet zone eliminates the need for trains to sound their horns as they approach the crossings. The Metrolink Antelope Valley Line is operated by the Southern California Regional Rail Authority (SCRRRA) and is utilized by Metrolink and Amtrak for passenger rail service and by Union Pacific Railroad for freight service.

To celebrate a decade's worth of hard work, the Public Works Department held a press conference on Wednesday, January 25th at Pelanconi Park. The speakers included Mayor Paula Devine, Public Works Director Roubik Golanian, Councilmember/ 2nd Vice-Chair of Metrolink Board/ Director on Metro Board Ara Najarian, Metrolink Board Chair Andrew Kotyuk, and Metrolink CEO Art Leahy.

Check out some of the highlights from the press conference [here](#).

cohesion with policies, education, and programming are a net sum of actions that equate to a better quality of life. The City of Glendale today has established various programs and policies to continue to promote the health of the community as a whole. Efforts such as the "One Glendale" afterschool youth sports program, vending machines stocked full of healthy snacks and drinks, the Be Street Smart Glendale campaign, our recent ranking amongst US Cities for fiscal strength, the investment of DIF funds in parks and recreational opportunities, and the first Metrolink served quiet zone all tie into the collective action towards a healthier community.

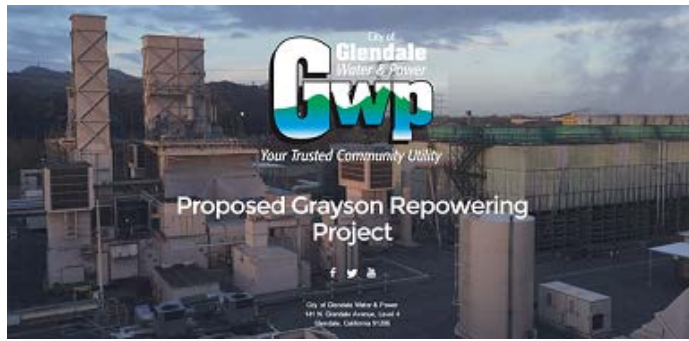
This is our community. We live, work, and play here, and collectively, we can make Glendale a healthy community. The collective impact initiative will enlist 100 community organizations to participate in "owning the health of our community." As a community leader, we invite you and your organization to become an integral part of initiating the long-term sustainable change needed to improve the health trajectory of our community.

CALENDAR

February 1, 15 & 22 - Personal Prose & Poetry: A Writing Class for Adults, 3:30 pm
Chevy Chase Library
3301 E Chevy Chase Dr
Learn more [here](#).

February 1, 8, 15 & 22 - Citizenship Classes, 6:00 pm - 9:00 pm
Library Connection @ Adams Square
1100 E Chevy Chase Dr
Learn the English, Civics, and History requirements to pass the test and become a United States Citizen! Students must have a green card. Pre-registration required. Learn more [here](#).

February 2, 9 & 16, 6:00 pm -



Repowered Grayson Power Plant

Glendale's Water and Power Department proposed to repower the Grayson Power Plant located in the industrial area of Glendale at 800 Air Way. The City is proposing to replace all the existing generation facilities, units, and their related infrastructure, with the exception of Unit 9, by removing existing aboveground and belowground equipment, and facilities and building new generation facilities.

Repowering the plant is necessary to meet current and future City energy needs and California Renewables Portfolio Standard (RPS) requirements. The new equipment and facilities would be more energy efficient, create less emissions, and increase reliability of the power grid.

For more information and upcoming meetings, visit graysonrepowering.com.

Donate or Help Build Lomita Homes



Since 1995, the City of Glendale and San Gabriel Valley Habitat for Humanity (SGV Habitat) have partnered to provide affordable housing. In continuation of their long-term partnership, six new townhouse style homes will be built at 634 - 700 Lomita Avenue in Glendale. Family selection has been completed and the selected families were notified in November 2016. Construction for the Lomita Homes is tentatively set to begin July 2017. The homes will be configured as six attached condominium dwelling units, with 3 bedrooms, 1/2 bathroom on the ground floor, one and 3/4 bathrooms on the top floor, and an attached two car garage.

If you are interested in contributing to this effort, visit the [Lomita Homes webpage](#). You can make a financial donation, participate in a sponsorship, or volunteer your time to be a part of a committee or to help build the houses.

Verdugo Workforce Development Board Releases Four Year Regional and Local Plans

Get Crafty - Adult Crafts & Coloring
Casa Verdugo Library
1151 N Brand Blvd

Bring a little stress relief into your life with a little tea, some music, and a whole lot of crafts and coloring. Learn more [here](#).

February 3 & 17 - Teen Night Out, 5:30 pm - 9:00 pm
Pacific Community Center
501 S Pacific Ave

Teens can come hang out and participate in activities. Snacks and refreshments will be provided. Learn more [here](#).

February 8 - Glendale Tech on Tap: Anatomy of Fake News and the Impact on Your Brand, 5:00 pm - 7:00 pm
Moose Den
156 S Brand Blvd

Meet City of Glendale Director of Communications & Community Relations Tom Lorenz, as he talks about the "Anatomy of Fake News and the Impact on Your Brand." It will be highlighting the rise and consequences of Fake News, and what it could mean for the public perception of your organization's brand moving forward. Learn more [here](#).

February 9 - Club Maple Valentine's Day Celebration, 5:30 pm - 8:00 pm
Maple Park Community Center
820 E Maple St

Join us for Club Maple's Annual Valentine's Day event. Refreshments will be served as we celebrate love and friendship. For more information, please call Kenneth Khan at (818) 548-3783.

February 10 - Parent's Night Out, 6:00pm - 12:00 am
Pacific Community Center
501 S Pacific Ave

Celebrate Valentine's Day early, get together with your friends for an adults only evening, or just have an evening to yourself. Learn more [here](#).

February 11 - Trail Maintenance Workday, 8:00 am - 12:00 pm
Deukmejian Wilderness Park
3429 Markridge Rd

It's time for a little touch up on the "Rim of the Valley Trail". Join us as we focus on sprucing up the existing trail. Learn more [here](#).

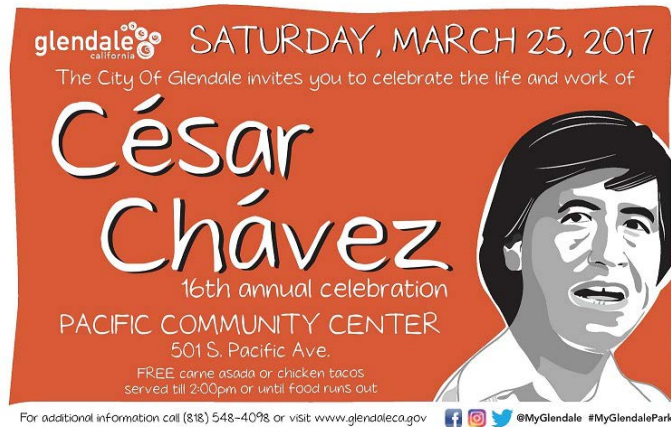
February 11 - How Pets Can Reduce Your Stress Level, 10:30 am
Pacific Park Library



The State of California and the Workforce Innovation and Opportunity Act of 2014 require regional workforce planning. As a result, the Verdugo Workforce Development Board (VWDB) released two draft documents for public review and comment on Wednesday, February 1, 2017. The Local Plan will be implemented to assist the VWDB in meeting its vision of: *"an economically vibrant, tri-city region with thriving businesses, youth and job-seekers on career paths that reflect their highest potential."*

The two **DRAFT** plans are available for public review and comment until March 1, 2017 at www.verdugoworkforce.com. Please email all comments for both draft plans to mpranke@glendaleca.gov.

A public meeting will be held at the Verdugo Jobs Center on Tuesday, February 14, 2017 from 10am - 12pm to present an overview of the plans' purpose and requirements.



16th Annual Cesar Chavez Celebration

Join us on Saturday, March 25, 2017 for the City's 16th Annual Celebration of Cesar Chavez. The event will feature live performances, free tacos while supplies last, Glendale Rocks! climbing wall, crafts for children, and more.

For more information, please call (818) 548-4098. Click [here](#) for flyer.



April 2017 Glendale Elections

Glendale's General Municipal Election will take place on April 4,

501 S Pacific Ave

Join Adrian Griffin from the Pasadena Humane Society. Learn more [here](#).

February 11 - Jewel City Knitters, 2:00 pm
Chevy Chase Library

3301 E Chevy Chase Dr
Jewel City Knitters makes and donates knit and crochet items to local, national and international organizations. Learn more [here](#).

February 13 - Registration for Spring Camps Begins!

Learn more [here](#).

February 14 - Verdugo Workforce Development Board Meeting, 10:00 am - 12:00 pm
Verdugo Jobs Center
1255 S Central Ave

A meeting for an overview of the Verdugo Workforce Development Board (VWDB) four year regional and local plans purpose and requirements. Learn more [here](#).

February 14 - Booked Solid - Adult Book Club, 7:00 pm
Casa Verdugo Library
1151 N Brand Blvd

Read and discuss *Between the World and Me* by Ta-Nehisi Coates. Learn more [here](#).

February 16 - DPSS - Medi-Cal Social Service Benefits, 12:30 - 4:30 pm

Pacific Park Library
501 South Pacific Ave
Eligibility workers from the LA County Department of Social Services will be on site to assist you with your Medi-Cal and CalFresh applications, and answer your questions about these programs. Learn more [here](#).

February 16 - The Collectivists –Haptic Language: Contemporary Collage & Feminism, 6:30 pm
Brand Library & Art Center
1601 W Mountain St

A panel discussion including artists Cindy Rhem, Claire de Dobay Rifelj, Jessica Wimbley and Sune Woods. Program organized by Association of Hysteric Curators. Learn more [here](#).

February 17 - Healthy Teens: A Better Way of Living Part 1 - Smoothies, 6:30 pm
Pacific Community Center
501 S Pacific Ave

Healthcare Foundation at Glendale Adventist Medical Center will be showing teens how to make healthy smoothies during a food demonstration.

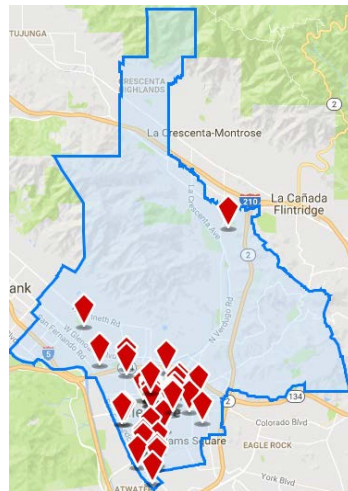
2017. This year City Council, City Treasurer, and City Clerk will be up for election, and Measure L will be featured on the ballot. Measure L will limit councilmembers to three terms totaling to 12 years of service.

For the first time in Glendale's history, the Glendale Unified School District (GUSD) and the Glendale Community College (GCC) District will hold a by-district election.

For more information on how to register to vote, finding a polling place or your voting district, and other election questions, visit GlendaleVotes.org, the official City website for Glendale's Municipal Elections.

If you have any questions regarding the election, please contact the City Clerk's office at (818) 548-4000.

Opening a Business in Glendale



Downtown Glendale and the city's neighborhood districts are experiencing tremendous growth and excitement. Below are some new retail properties available in the area for lease:

- 425 N Brand Blvd
- 701 E Broadway
- 301 N Brand Blvd
- 236-238 N Brand Blvd
- 204 N Brand Blvd
- 201 N Brand Blvd
- 1417 W Kenneth Rd

If you are interested in opening a business in Glendale in 2017, call us to see how we can be of assistance at 818-548-2005. For all available properties,

[click here](#).



We Own the Health of Our Community

In operation since 1990, the Glendale Healthier Community Coalition (GHCC) has brought together 52 organizational and individual community members to work together to provide a healthy community to the City of Glendale. GHCC strives to do so by implementing projects that promote disease prevention, health education, clean and safe environments, adequate housing, affordable and quality education, and community revitalization.

On November 12, 2015, over 150 community leaders and stakeholders participated in the launch of Glendale's first ever City-Wide Collective Impact Initiative. "We Own the Health of Our Community" is spearheaded by the Glendale Healthier Community Coalition and is a game changer for improving the health of those who live and work

Learn more [here](#).

February 17 - Teen Art Class, Vision Board Collage, 7:30 pm - 8:30pm

*Pacific Community Center
501 S Pacific Ave*

Bring dreams to life using magazine cut outs. We will place images that inspire and motivate on a board and learn about the power of daydreaming. Learn more [here](#).

February 18 - "Born to Be Wild", 8:00 am - 12:00 pm
*Deukmejian Wilderness Park
3429 Markridge Rd*

Help in the restoration and creation of a habitat that is better suited for the native plants and animals. Learn more [here](#).

February 19 - Healing Arts of Japan & Hawaii, 11:00 am - 1:00 pm
*Shoseian Whispering Pine Tea House
1601 W Mountain St*

Join the Friends of Shoseian for a two hour workshop at the Shoseian Tea House in Brand Park. Learn more [here](#).

February 21 - Armenian Parent Support Group, 6:30 pm
*Library Connection @ Adams Square
1100 E Chevy Chase Dr*

The Frank D. Lanterman Regional Center, in cooperation with the Library, Arts & Culture Department, will host a monthly support group for Armenian-speaking families of children with special needs. Learn more [here](#).

February 27 - Montrose Adult Book Club, 6:15 pm
*Montrose Library
2465 Honolulu Ave*

Read and discuss Boys in the Boat by Daniel Brown. Learn more [here](#).

February - Homework Help, 4:00 pm - 5:30 pm
*Grandview Library
1535 Fifth St*

Free Homework Help every Monday, Tuesday and Wednesday that we're open! See the monthly calendar [here](#) and learn about Homework Help and the many programs for children of all ages.

Through April 28 - Colleen Kelly - Dream Portal: Once Upon A Time
*Adams Square Mini-Park Gas Station
1020 E Palmer Ave*

Enjoy Colleen Kelly's mixed media art installation. Learn more [here](#).

in Glendale.

To learn more about this initiative, please click [here](#).



Residential Preferential Parking Permits

The City has extended the renewal period until February 28, 2017 to allow residents ample time to submit and receive their 2017 permits. Your current 2016 preferential parking permit will be valid until February 28, 2017. If you would like to renew or purchase a permit, use our new online system [here](#).

Please call the Public Works Department's Engineering Division at (818) 548-3945 to find out if you live in a residential parking permit district.



E-Waste, Mattresses, or Tires

Dispose of your e-waste, mattresses, and tires in a socially and ecologically responsible way! Bring your items to Babe Herman Field at Verdugo Park on March 25th from 8:30am - 1:30pm.

Accepted e-waste items for the day are:

- Desktop & laptop computers
- LCD monitors & TVs
- MP3 players
- GPS systems
- Camcorders
- Smartphones
- PDA's & cell phones
- CRT & monitors

Accepted tires and mattresses:

- Mattresses
- No tires from businesses
- Passenger, light truck, and motorcycle tires only
- Maximum of nine (9) tires per person, per trip
- Tires on rims will not be accepted

To view the calendar event, click [here](#).

Looking Ahead

- March 7** - 2017 Arbor Day
- March 16** - Veteran's Job Fair
- March 22** - Glendale Chamber of Commerce Annual State of the City & Awards Luncheon
- March 25** - E-waste, Mattress, Tire Recycling
- March 25** - 16th Annual Cesar Chavez Celebration
- April 4** - Glendale's General Municipal Election Day

March Holiday Closures

- February 18 - 20 - Saturday - Monday**, President's Day. All libraries closed.
- February 20** - President's Day - All City offices and libraries closed.

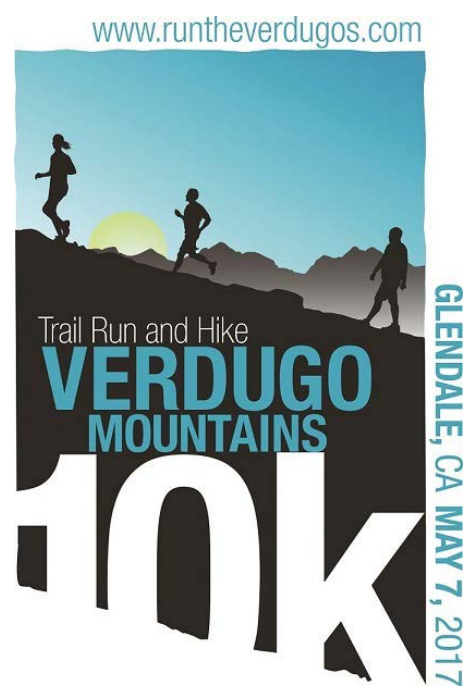
For more information, click [here](#).

Check the City's calendar for changes in date, time, or location [here](#).



2016 Year-in-Review

This past year, Community Development has been quite busy implementing Tech on Tap and Tech Week, developing the South Glendale Community Plan, launching the City Licensing, Inspection, and Permits Portal, and creating a Pedestrian Master Plan & Safety Initiative. That's not even half of it! Watch 2016's highlight reel by clicking [here](#).



Verdugo Mountains 10K Trail Run and Hike - Registration Now Open!

Now in its seventh year, the Verdugo Mountains 10K has become the largest single-event Trail Run in Southern California. The course begins in beautiful Brand Park, climbs steadily to one of the highest points in the Verdugo Mountains, and then heads back downhill for a fast descent to the finish. Breathtaking views of the Los Angeles Basin, the San Fernando Valley, and the Pacific Ocean await the runners at every turn. Our outstanding Race Expo and Free Pancake Breakfast make the Verdugo Mountains 10K a destination race for all of Southern California and beyond.

[CLICK HERE](#) to register online. Learn more about the event [here](#).

2017 Arbor Day

Tree Donation Opportunity

Glendale Beautiful, in cooperation with the City of Glendale's Community Services & Parks Department, cordially invites you to participate in the annual observance of Arbor Day on March 7th. Arbor Day presents the opportunity for the community to be a part of the planting of trees to beautify our City.



Join this community-wide effort by contributing to the purchase of a tree! There is no nicer tribute than to donate a tree in recognition of a special person. Trees make lasting memorials. [Click here](#) to donate a tree. The deadline to donate a tree is February 28, 2017.

A brief ceremony will be held at Casa Adobe de San Rafael during which donors meeting the deadline will be presented with a certificate. Coffee and socializing will begin at 10:00 am. The program will begin at 10:30 am. If it rains, Arbor Day will be held at the lower level of the Civic Auditorium.

Other Newsletters

[Community Services and Parks](#)

[Community Development](#)

[Economic Development](#)

[Glendale Water & Power](#)

[Library, Arts & Culture](#)

[Public Works](#)

[Previous City Connection Newsletters](#)

Stay Connected!



Sign Up for all of Glendale's [Email Newsletters](#)

This is an official publication of the City of Glendale, distributed by the Office of Communications and Community Relations. For inquiries, please contact Eliza Papazian, City Connection Editor at epapazian@glendaleca.gov or (818) 548-4844.

