

[Click here to view this message in your browser.](#)



# CITY CONNECTION

CONNECTING TO THE COMMUNITY

glendale  
california



Click to Navigate: [Calendar](#) | [Contact Us](#) | [Newsletters](#) | [Holiday Closures](#)

This publication is brought to you by Mayor Paula Devine,  
Councilmembers Vartan Gharpetian, Ara Najarian, and Zareh Sinanyan.

January 2017

## Message From Scott Ochoa



Glendale City Manager

*Anybody can become angry - that is easy, but to be angry with the right person and to the right degree and at the right time and for the right purpose, and in the right way - that is not within everybody's power and is not easy.*  
-Aristotle

Perhaps it is odd to start the New Year with a quotation about anger; however, it seems undeniable to me that 2016 was an angry year. From politics and world events, to societal and climate trends, to economic angst and the loss of celebrated touchstones, to the general pace and intensity of change in things that we all *knew*...or at least thought we knew. It is scary, to be sure, when things don't turn out the way that you want or expect. It



## POSTPONED DUE TO WEATHER: Palmer Park Grand Re-Opening

The grand re-opening ceremony of Palmer Park scheduled for January 7, 2017 has been postponed due to inclement weather.

Follow [@MyGlendaleParks](#) for information regarding the new scheduled date.



## SR-134 On/Off Ramps and Monterey Road Construction

The City of Glendale's Public Works Department will be resuming construction of the [SR-134/Glendale Avenue Interchange Modification Project](#) during the first week of the New Year, **beginning January 3,**

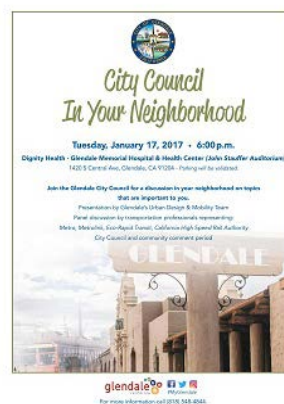
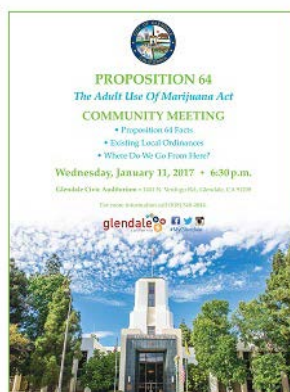
is scarier still when things don't turn out because your fundamental assumptions of the world turn out to be wrong, or more often, *incomplete*. It is ironic to reflect on truisms that we are all familiar with, like "Wait for the other shoe to drop" or "There is another side to the story", and then become quite surprised when we realize that free trade and the socioeconomic stability it exports abroad come with a cost of manufacturing jobs here at home; that robotics and automation boost productivity but also cost jobs; that mobile technology connects the world in an instant but contributes to increased isolation in a virtual environment; or that many folks fiercely guard freedom of speech only to readily surrender freedom of thought. It would seem that, in our haste to win an argument (or at least not lose one) - and, despite us knowing that there is another reasonable and worthwhile side to the coin - we ignore the reality that rarely is anything valuable ever quick or easy or simple to achieve. Understanding trade-offs - especially in a free and civil society - is difficult and complex and usually demands sacrifice. And, rather than employing careful and discerning consideration, it is often easier and more immediately gratifying to simply grow angrier and more convinced of your own righteousness. I fear this is where we find ourselves at the dawn of 2017.

This is a delicate time for our country and our community, which brings me back to anger.

Anger in and of itself isn't the problem, in my opinion. Anger can lead to hate or it can lead to perseverance. Unchecked, undisciplined, unrefined anger invites ugliness and deep-seeded animosity; however, the Aristotelian reflection on anger can lead to a resolve that can be channeled productively. Like a searing mistake that we are sworn never to repeat or a deep injury that is the genesis of a zealous commitment, such anger can form a bulwark against lethargy, apathy, and cynicism. With time and practice, 2016's anger can facilitate an obligation to make the most honest assessments, the most empathetic pronouncements, and chart a course that benefits the greatest number of people to the greatest degree possible - all while realizing that there will be consequences and

**2017.** Throughout January and February 2017, crews will be working to rehabilitate existing street pavement on Monterey Road from Geneva Street to Verdugo Road, and on the SR-134 on/off ramps. Commuters can expect lane closures and increased traffic delays. However, at least one traffic lane will be open at all times during construction - on Monterey Road and on the SR-134 on/off ramps. After the completion of the project, traffic flow on Glendale Avenue and Monterey Road will improve, along with the service life and ride of the roadways.

For current construction activities on Glendale Avenue and its surrounding areas, follow [@MyGlendalePW](#) or check the [project page](#) frequently for updates. We thank you for your patience as we work to improve Glendale's roadways.



## Upcoming Community Meetings

**January 11 - Prop 64: The Adult Use of Marijuana Act Community Meeting.** View flyer [here](#).

- Proposition 64 facts
- Existing local ordinances
- Where do we go from here?

**January 17 - Transportation/Mobility Summit "City Council in Your Neighborhood" Meeting.** View flyer [here](#).

- Presentation by Glendale's Urban Design & Mobility Team
- Panel Discussion by transportation professionals representing Metro, Metrolink, Eco-Rapid Transit, and the California Highspeed Rail Authority
- City Council and community comment period



## Glendale On The Move

externalities, even if we don't or cannot know them at this time.

The world is an imperfect place; Glendale is not a perfect community. Yet, there is so much more that is right about Glendale than wrong; it is difficult to not be optimistic about our prospects...and this is where anger comes in. We must, as a community, take stock of the traffic congestion, bad driving (and walking), the state of mental health services and homelessness, housing costs, the desire to preserve neighborhoods, the need for additional public safety resources, the need for public parks and open spaces, and desire to live in the comfortable knowledge that we are receiving value for the resources invested in our government. We must be strong enough to be angry in the right way and to the right degree in order to make the improvements we desire for our City, even if it means that we must accept certain tradeoffs. You want better transit connectivity? Then we need to understand that traffic will be impacted during construction. You want to stabilize housing costs and/or make Glendale affordable for our children? Then we need to understand that we may need to allow for development in strategic locations. Further, our repurposed anger must have longevity and patience - in a world this complex, progress comes slowly, and our enthusiasm cannot wane if it is to be useful.

2016 is over - And, as we enter 2017, remember this feeling; don't get distracted by your Twitter feed, fake news articles, or cat videos. Get involved and stay involved - but work hard to do it the right and productive way. Happy (Angry) New Year.

\*\*\*\*\*

## CALENDAR

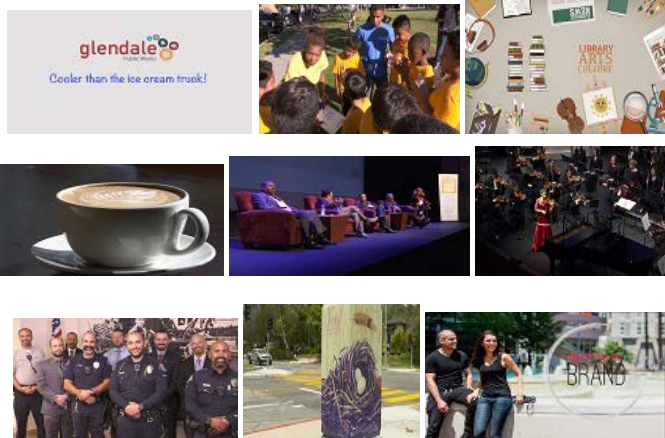
**January 6 - Teen Night Out,**  
5:30 pm - 9:00 pm  
**Pacific Community Center**  
501 S Pacific Ave

Teens can come hang out and participate in activities. Snacks and refreshments will be provided. Learn more [here](#).

**January 7 - Native Plant Hike/Program,** 9:00 am - 12:00 pm

GTV6's newest episode of *On The Move* is now available! In this episode, we check out some of our favorite *On The Move* segments of 2016! Be sure to tune in to Charter channel 6 or check the City's [YouTube](#) channel for new episodes.

Watch each segment here:



## 2017's Holiday Collection Schedule

As a reminder - your trash, recycling, and yard trimmings containers will be serviced on the regularly schedule collection days for the upcoming holidays:

- Martin Luther King Jr. Day
- President's Day

Collection will NOT be affected. For the complete holiday collection schedule, click [here](#). If you have any questions, call Integrated Waste Management at (818) 548-3916.



Follow Public Works on [Twitter](#) and [Facebook](#) for other updates regarding our services.

## #MyGlendalePW's Free Christmas Tree Recycling Program



While you're cleaning out your house for the New Year, continue the giving spirit and recycle your tree with us!

The Public Works Department's Integrated Waste Management Division offers an easy, free, and convenient Christmas tree recycling service. Please be aware that due to a high volume of trees, it may take up to a week for your tree to be collected.

Learn how to recycle your tree with us by

watching this [video](#).



**Deukmejian Wilderness Park**  
**3429 Markridge Rd**  
 Join us for the "Know Your Natives" native plant hike and learn about the vegetation all around you. Learn more [here](#).

**January 7 - Book To Art Club,**  
**10:30 am**  
**Brand Library & Art Center**  
**1601 W Mountain St**  
 Read and discuss *The Alchemist* by Paulo Coelho, and enjoy an art project based on themes from the book. Learn more [here](#).

**January 7 - Glendale Knit & Crochet, 1:00 pm**  
**Montrose Library**  
**2465 Honolulu Ave**  
 Meet with other yarn crafters interested in knitting and crocheting for charity. Learn more [here](#).

**January 7, 21 & 28 - Got Yarn,**  
**3:00 pm**  
**Pacific Park Library**  
**501 S Pacific Ave**  
 Beginners and advanced knitters are welcome! Learn more [here](#).

**January 9, 12 & 23 - Get Crafty - Adult Crafts & Coloring, 6:00 pm**  
**Casa Verdugo Library**  
**1151 N Brand Blvd**  
 Bring a little stress relief into your life with a little tea, some music and a whole lot of crafts and coloring. Learn more [here](#).

**January 10 - Booked Solid - Adult Book Club, 7:00 pm**  
**Casa Verdugo Library**  
**1151 N Brand Blvd**  
 Read and discuss *Defending Jacob* by William Landay. Learn more [here](#).

**January 11 - Mandatory Volunteer Orientation for 2017 Homeless Count, 10:00 am**  
**Perkins Building, Room 118**  
**141 N Glendale Ave**  
 Learn more [here](#).

**January 11, 18 & 25 - Personal Prose & Poetry: A Writing Class for Adults, 3:30 pm**  
**Chevy Chase Library**  
**3301 E Chevy Chase Dr**  
 Learn more [here](#).

**January 11, 18 & 25 - Citizenship Classes, 6:00 pm - 9:00 pm**  
**Library Connection @ Adams Square**  
**1100 E Chevy Chase Dr**  
 Learn the English, Civics, and History requirements to pass



## Quiet Zone Coming to Glendale!

Through the great team effort of Public Works staff, the City of Glendale will have its first ever railroad quiet zone towards the end of this month. The zone will be along Metrolink Antelope Valley Line at the Flower Street, Grandview Avenue, and Sonora Avenue crossings.

A railroad quiet zone eliminates the need for trains to sound their horns as they approach the crossings. Once the Quiet Zone is in effect, it will be on a continuous 24-hour/day basis. The Metrolink Antelope Valley Line is operated by the Southern California Regional Rail Authority (SCRRA) and is utilized by Metrolink and Amtrak for passenger rail service and by Union Pacific Railroad for freight service.

To read more about the project, please click [here](#).



## April 2017 Glendale Elections are Around the Corner

### *A Message From City Clerk, Ardy Kassakhian*

It seems like the 2016 Presidential Election was just yesterday and we're already gearing up for Glendale's General Municipal Election on April 4, 2017. This will be one with a lot of offices up for election and a ballot initiative for voters to consider. But there's more. For the first time in Glendale's history, the Glendale Unified School District (GUSD) and the Glendale Community College (GCC) District will hold elections for trustees who reside in specific geographic areas instead of having all the trustees run in an at-large election. This means that each Trustee will be elected from a specific area where they live.

Read more [here](#).

the test and become a United States Citizen! Learn more [here](#).

**January 14 - Riverwalk Workday, 8:00 am - 12:00 pm**  
*Glendale Narrows Riverwalk*  
*300 Paula Ave*

Join our volunteers at the Glendale Narrows Riverwalk as we weed and maintain the landscaped areas along the Los Angeles River in the City of Glendale. Learn more [here](#).

**January 17 through April - Art Installation**

*Adams Square Mini Park*  
*1020 E Palmer Ave*

Enjoy Colleen Kelly's art installation, Dream Portal: Once Upon A Time. Learn more [here](#).

**January 18 - Martin Luther King Jr. Togetherhood Breakfast, 7:30 am - 9:00 am**  
*Dignity Health Glendale Memorial Hospital and Health Center*  
*1420 S Central Ave*

A breakfast to unite the community in honor of Martin Luther King Jr. Learn more [here](#).

**January 19 - DPSS - Medi-Cal Social Service Benefits, 12:30 pm - 4:30 pm**  
*Pacific Park Library*  
*501 S Pacific Ave*

You may qualify for CalFresh and/or Medi-Cal benefits. Learn more [here](#).

**January 20 - Teen Night Out, 5:30 pm - 9:00 pm**  
*Pacific Community Center 501 S Pacific Ave*

Teens can come hang out and participate in activities. Learn more [here](#).

**January 20 - Teen Art - Watercolors, 7:30 pm**  
*Pacific Park Library*  
*501 S Pacific Ave*

Dabble and bloom in a "no experience necessary" paint play shop. Learn some fun basic techniques to create colorful watercolor paintings. Learn more [here](#).

**January 20 - Commission on the Status of Women and Soroptimist International of Glendale Present "SOLD", 6:30 pm**

*Brand Library Recital Hall*  
*1601 W Mountain St*  
Learn more [here](#).



### Preferential Parking Permits

If you live in an established preferential parking permit district, you can purchase a permit that excludes you from the posted time limits. As a reminder, vehicle displaying a valid Preferential Parking Permit are not exempt from the posted "No Parking" zones or times.

If you would like to renew or purchase a permit, use our new online system [here](#). The City has **extended the renewal period until January 31, 2017** to allow residents ample time to submit and receive their 2017 permits. Your current 2016 preferential parking permit will be valid until January 31, 2017.

If you would like to find out if you live in a residential parking permit district, please call our Engineering Division at (818) 548-3945.



### Receive a FREE Smart Thermostat and In-Home Display

As part of GWP's In-Home Display and Smart Thermostat program, you may be eligible to receive an In-Home Display that shows near-real time electric and water usage, and displays conservation messages. Customers will also receive a smart thermostat that can be controlled from anywhere through a smartphone app. Those who are eligible to participate will receive both devices and the installation is free!

This is a great way to stay on top of your usage and be aware of how much you can save just by having the power and the control of your home's thermostat through your phone!

[Click here](#) to complete a questionnaire to determine eligibility.

**January 21 - Composting Workshop, 8:00 am - 9:00 am**  
**Integrated Waste Yard**  
**548 W Chevy Chase Dr**  
 For information on how to pre-register, go [here](#).

**January 21 - Wilderness Workday, 8:00 am - 12:00 pm**  
**Deukmejian Wilderness Park**  
**3429 Markridge Rd**  
 Observe a squirrel or two during our morning of tree watering, invasive plant removal, and tree planting. Learn more [here](#).

**January 21 - One Glendale, Afterschool Youth Program Volleyball Championship**  
**Pacific Community Center 501 S Pacific Ave**  
 Consolation game at 10:00 am and championship game at 11:00 am. Learn more [here](#).

**January 21 - Get Crafty - Adult Crafts & Coloring, 10:00 am**  
**Casa Verdugo Library**  
**1151 N Brand Blvd**  
 Bring a little stress relief into your life with a little tea, some music and a whole lot of crafts and coloring. Learn more [here](#).

**January 21 - Music Animated - Ancient Homelands, 10:30 am**  
**Brand Library & Art Center**  
**1601 W Mountain St**  
 Martin Espino, scholar, musician and instrument maker will present "indigenous" music of North, Central and South America. Fun for the whole family. Learn more [here](#).

**January 21 - Jewel City Knitters, 2:00 pm**  
**Chevy Chase Library**  
**3301 E Chevy Chase Dr**  
 Jewel City Knitters make and donate knit and crochet items to local, national, and international organizations. Learn more [here](#).

**January 21 - The Collectivists, 6:00 pm - 9:00 pm**  
**Brand Library & Art Center**  
**1601 W Mountain St**  
 An exhibition of six leading artist collectives and artist-run spaces in Los Angeles: Durden and Ray, Eastside International, Manual History Machines, Monte Vista Projects, and Tiger Strikes Asteroid. Learn more [here](#).

**January 23 - Montrose Adult Book Club, 6:15 pm**  
**Montrose Library**  
**2465 Honolulu Ave**  
 Read and discuss *Suspect* by Robert Crais. Learn more [here](#).

**January 24 - Homeless Count, 8:00 pm - 10:00 pm**  
**CLICK HERE** to register online to



## Volunteers Needed for the 2017 Homeless Count

The City of Glendale will be conducting the 2017 Homeless Count on January 24 & 25, 2017. Volunteers are needed to support street outreach efforts for conducting the count. Collecting reliable data on the number, characteristics, and service needs of individuals, families, and unaccompanied children experiencing homelessness is a critical component of local homeless planning. Accurate, timely data on our homeless population and where they live is a critical tool to help secure and direct resources where they are most needed.

**CLICK HERE** to register online to volunteer. For more information regarding the count, please contact Arsine Isayan at (818) 548-3249 or at [arisayan@GlendaleCA.gov](mailto:arisayan@GlendaleCA.gov)

### Holiday Closures

January 14 - All libraries closed.  
 January 16 - Martin Luther King Jr. Day - All City offices and libraries closed.  
 February 20 - President's Day - All City offices and libraries closed.

For more information, click [here](#).

### Looking Ahead

March 22 - Glendale Chamber of Commerce Annual State of the City & Awards Luncheon  
 April 4 - Glendale's General Municipal Election Day  
 April 29 - Earth Day Event

### Other Newsletters

[Community Services and Parks](#)

[Community Development](#)

[Economic Development](#)

[Glendale Water & Power](#)

[Library, Arts & Culture](#)

[Public Works](#)

[Previous City Connection Newsletters](#)

volunteer. For more information regarding the count, please contact Arsine Isayan at (818) 548-3249 or at [arisayan@GlendaleCA.gov](mailto:arisayan@GlendaleCA.gov).

**January 25 - Homeless Count, 8:00 am - 10:00 am**  
[CLICK HERE](#) to register online to volunteer. For more information regarding the count, please contact Arsine Isayan at (818) 548-3249 or at [arisayan@GlendaleCA.gov](mailto:arisayan@GlendaleCA.gov).

**January 26 - Actress and Animal Rights Activist Tippi Hedren Discusses Tippi, 7:00 pm**  
**Adult Recreation Center**  
**201 E Colorado St**  
In this absorbing and surprising memoir, Tippi Hedren tells her story, including never-before-revealed experiences on the set of some of the biggest cult films of all time. Learn more [here](#).

**January 27 - Parents' Night Out, 6:00 pm - 12:00 am**  
**Sparr Heights Community Center**  
**1613 Glencoe Way**  
Drop off the kids and enjoy a night out on the town! Learn more [here](#).

**January 28 - Brand Associates Music Series - Pianist Hui Wu, 2:00 pm**  
**Brand Library & Art Center**  
**1601 W Mountain St**  
Hui Wu will be playing Bach, Chopin, Stravinsky, Philip Glass and Donald Crockett. Learn more [here](#).

\*\*\*\*\*

Check the City's calendar for changes in date, time, or location [here](#).

## Stay Connected!



Sign Up for all of Glendale's [Email Newsletters](#)

This is an official publication of the City of Glendale, distributed by the Office of Communications and Community Relations. For inquiries, please contact Eliza Papazian, City Connection Editor at [epapazian@glendaleca.gov](mailto:epapazian@glendaleca.gov) or (818) 548-4844.