



CITY CONNECTION
CONNECTING TO THE COMMUNITY

[Click here to view this message in your browser.](#)

This publication is brought to you by Mayor Ara Najarian, and City Councilmembers Paula Devine, Vartan Gharpetian, Vrej Agajanian, and Frank Quintero

December 2019

Holiday Tree Lighting Ceremony and Cram-A-Classic Toy Drive

The City of Glendale and Community Services & Parks Department cordially invite you to the

HOLIDAY TREE LIGHTING CEREMONY
Friday, December 6, 2019 at 6PM
City Hall Perkins Plaza
613 E. Broadway, Glendale, CA 91206

Featuring: Lighting of the City Hall tree, performances by R.D. White Chorus and Roosevelt Stage Band, a special visit from Santa, a holiday movie and food trucks. Ice Skating at Glendale's Holiday on Ice will be available before and after the event.

CRAM-A-CLASSIC TOY DRIVE
Friday, December 6, 2019 at 6PM
Toy Drop-Off on Isabel St.
131 N. Isabel St., Glendale, CA 91206

Glendale Fire Department and ABC 7 invite you to bring a new unwrapped toy to the Holiday Tree Lighting event. Help us cram a Cruise Night classic car with toys! Glendale Firefighters will collect and distribute toys to underserved children in our community.

Free parking at the Civic Center Visitors Parking Structure located at 620 E. Wilson Ave, Glendale, CA 91206. In case of rain, the events may be cancelled. For more information, please call (818) 548-2792 or email: PBetancourt@glendaleca.gov

[f](#) [t](#) [i](#) @MyGlendaleParks

The Glendale City Council and Community Services & Parks cordially invite you to the Holiday Tree Lighting Ceremony, featuring: lighting of

City Manager's Message



Yasmin Beers

I am writing this message while looking out to fallen leaves and cloudy skies. How beautiful. We are so lucky to be here.

While driving home from City Hall yesterday, streets were lined with holiday décor and the spirit of the season felt alive in Glendale. You can't say this about every City, especially in LA where we hardly get to experience winter weather.

Are you feeling that holiday spirit yet? If not, we have a full list of events and things to do to get you there.

We have an ice rink! Southern California doesn't typically seem like much of a winter wonderland, until, that is, you

the City Hall tree, special visit from Santa, holiday movie, and food trucks!

Don't forget to bring a new and unwrapped toy for the Glendale Fire Department and ABC 7's Cram-A-Classic Toy Drive! Glendale Firefighters will collect and distribute toys to underserved children in our community.

In case of rain, event will be cancelled. For more information, please call (818) 548-2792.

Glendale's Holiday on Ice

GLENDALE'S HOLIDAY ON ICE
OUTDOOR ICE SKATING RINK

NOV. 22ND 2019 thru JAN. 6TH 2020
OPEN DAILY | WEATHER PERMITTING

CITY HALL PARKING LOT
122 N. Isabel St., Glendale, CA 91206

For more information and special event dates, please visit:
WWW.GLENDALESHOLIDAYONICE.COM

Glendale's Holiday On Ice brought to you by your Glendale City Council.

@MyGlendaleParks

Did you know that Glendale has its own ice skating rink this winter? That's right! You can ice skate at Glendale City Hall, in the parking lot off of Isabel and Broadway! Glendale's Holiday on Ice opened on November 22, 2019, and you can enjoy skating daily through January 6, 2020. It will even be open on Christmas and New Year's Days!

For more information, please visit www.glendalesholidayonice.com.

Montrose Christmas Parade

Montrose - Glendale
Christmas Parade
First Saturday in December at 6:10pm
MontroseChristmasParade.com

The City of Glendale is a proud sponsor of the 43rd Montrose Christmas Parade! The Montrose Christmas Parade Association works all year long to plan this much loved community event, which will be held on Saturday, December 7, 2019, at 6:10 p.m.

Parade staging starts at La Crescenta Ave. & Honolulu Ave, however the parade itself begins at Honolulu Ave. & Rosemont Ave. and runs east to Verdugo Rd. The heart of the parade will be at the intersection of Honolulu Ave. & Ocean View Blvd. Parking is available in the open city parking lots (please note: Glendale Lots 1, 2, and 7 WILL be closed), on the open side streets and within the surrounding neighborhoods. Please plan to arrive early, set up some chairs and a blanket, and grab dinner at one of the many wonderful Montrose

create an ice skating rink. Come glide and pretend there's snow on the ground at Glendale's Holiday On Ice outdoor skating rink—the first ever in the City.

Winter sports aren't exactly a pastime in L.A., so little ones—and those of us who look helpless on the ice—can rent a Seal or Reindeer skating aid. Make the city your winter wonderland and add ice skating in Glendale to your list of must-do Holiday events this season. Plus, if you're still looking for the perfect Holiday gifts, the rink is located within walking distance from prime shopping destinations.

Spread the love this holiday season with unique gifts from the many small businesses in the beautiful Montrose Shopping Park and Kenneth Village! Make a night of your shopping trip and enjoy the twinkling lights with some delicious food at one of the local restaurants.

It doesn't end there. Here's our line-up for the month:

December 6th –

6:00 PM Holiday Tree Lighting Ceremony -- Join us as we light up the night with performances by R.D. White Chorus and Roosevelt Stage Band, holiday movies, food trucks, a special visit from Santa, and Glendale's first ever ice rink!

6:00 PM Cram-A-Classic Toy Drive – Don't forget to bring a new unwrapped toy to contribute to the toy drive!

6:00 PM Parent's Night Out – Use this as an opportunity to get your holiday shopping done if you haven't already!

December 7th –

9:00 AM Holly Jolly Breakfast with Santa

December 8th –

10:00 AM Parent's DAY Out – Here's another opportunity to get caught up!

restaurants. Please remember not to set up your chairs and blankets until the day of the parade, and keep in mind that temporary street closures will impact traffic that day, starting at 3:00 p.m. Check out the [Parade Map](#) and [Montrose Christmas Parade Website](#) for more information.

Holly Jolly Breakfast with Santa

greater downtown glendale association

Community Development Community Services & Parks

The City of Glendale and Community Services & Parks are proud to host Holidays In The Paseo in conjunction with the Greater Downtown Glendale Association and presented by Economic Development.

HOLLY JOLLY BREAKFAST WITH SANTA

SATURDAY, DECEMBER 7, 2019
9am - 12pm

(Food will be served while supplies last)

Artsakh Paseo - between Wilson Ave. & Broadway

Enjoy free hot chocolate and coffee, along with some breakfast goodies with Santa. Kids can meet with Santa, mail a letter to the North Pole, and make an arts & crafts project to take home!

In case of rain, event will be cancelled. For more information, please call (818) 548-2792 or email: PBetancourt@Glendaleca.gov

[f](#) [t](#) [i](#) @MyGlendaleParks

Join us on Saturday, December 7, 2019 and enjoy coffee, hot chocolate, and breakfast goodies (while supplies last) with Santa! The morning will include crafts for the kids, an opportunity to mail a letter to the North Pole, and a meet-and-greet with Santa! This event is free and open to the public. In case of rain, event will be cancelled. For more information, please call (818) 548-2792.

“Howl at the Moon” with Glendale K9!

December 13th -

7:00 PM [Fiesta de Las Luminarias](#)

December 14th -

3:00 PM [Fiesta de Las Luminarias](#)

5:30 PM [Holiday at the Old Stone Barn](#)

December 15th -

12:00 PM [Holiday Tea and Japan Culture Day](#)

December 21st -

4:00 PM [Ugly Sweater Party in the Paseo](#)

Feeling the spirit now?

I hope to see you around town! Don't forget that if you want up to the minute news, follow us on social media [@MyGlendale](#).

Calendar

Every Other Friday - Teen Night Out, 5:00 p.m. - 9:00 p.m.

[Pacific Community Center](#)
501 South Pacific Avenue
Glendale Teen Night Out is designed to provide free teen activities that include billiards, ping pong, karaoke, PS4, and teen coordinated activities. Snacks and refreshments will be served. In December, these events are scheduled for the 6th and 20th. Please call (818) 937-7240 with any questions. Learn more [here](#).

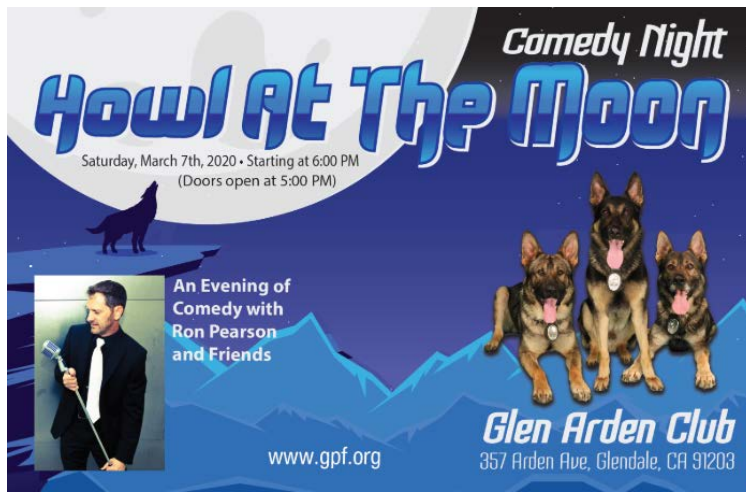
Every Tuesday - Zumba for Adults, 9:30 a.m. - 10:30 a.m.
[Maple Park Community Center Gymnasium](#)
820 E Maple St.

Come on down to Maple Park, and get in shape while you dance to some great music! \$1.00 for Activity Card holders. \$2.00 for Non-Activity Card holders.

For more information, please call (818) 548-3694.

[Zumba for Adults Flyer](#)

November 16, 2019 through January 17, 2020 - The Nothing That Is



Come join the **Glendale Police K9 Unit** for an evening of cocktails, dinner, laughs, and thrills! The 2nd Annual “Howl at the Moon” **Comedy Night** is scheduled for Saturday, March 7th, 2020 starting at 6pm at the beautiful Glen Arden Club. Tickets include:

- Live Auction
- No Host Cocktail Hour
- Full Buffet Dinner
- Visit from the Glendale K9s and Handlers
- Comedy Show featuring **Ron Pearson** and other Nationally Acclaimed Comedians!

Need a tax write off? Consider being a [sponsor](#) and see what we have to offer! The K9 Unit is funded with community donations and this yearly fundraiser through the Glendale Police Foundation, a 501c(3) organization. For more information, contact Alex Baroian at Alex@gpf.org.

Happy Holidays from the Glendale Fire Department!

Brand Library & Art Center 1601 W. Mountain Ave.

Curated by Yaron Dotan and Christine Rasmussen, “The Nothing That Is” features hand-crafted artwork that responds to the growing isolation humans feel as they try to connect through technology. Learn more [here](#).

December 4 – Career Pathways – 1 p.m.

Central Library TechSpace Computer Lab
222 E. Harvard St.

This free 1 hour workshop delves into in-demand occupations in the Glendale region by taking a broad look at in demand occupations in the Glendale region which primarily revolve around retail, food/hospitality and healthcare. Sponsored by the Verdugo Jobs Center. Library, Arts & Culture digital resources include tools job seekers may need when applying to jobs, including JobNow, an online service which provides personal assistance with resumes, cover letters and interview coaching for free. Learn more [here](#).

December 6– Holiday Tree Lighting Ceremony– 6:00 p.m.

City Hall Perkins Plaza
613 E Broadway

The Glendale City Council and Community Services & Parks cordially invite you to the Holiday Tree Lighting Ceremony, featuring: lighting of the City Hall tree, special visit from Santa, holiday movie, and food trucks. This event is free. Parking will be available at the Civic Center Parking Structure. In case of rain, event will be cancelled. For more information, please call (818) 548-2792.

December 6 – Cram-A-Classic Toy Drive – 6:00 p.m.- 8:00 p.m.

Toy Drop Off
131 N Isabel St.

Glendale Fire Department and



The Glendale Fire Department wishes everyone a safe and happy holiday season! Please follow these safety tips and enjoy the holidays with your family and friends!

Ugly Sweater Party in the Paseo

ABC 7 invite you to bring a new unwrapped toy to the Holiday Tree Lighting event. Glendale Firefighters will collect and distribute toys to underserved children in our community. In case of rain, event will be cancelled. For more information, please call (818) 548-2792. [Toy Drive Flyer](#)

December 7 – Holly Jolly Breakfast with Santa – 9 a.m. – 12 p.m.

*Artsakh Paseo
Between Wilson Ave and Broadway*

Enjoy coffee and hot chocolate along with breakfast goodies (while supplies last) with Santa. The morning will include crafts for the kids, an opportunity to mail a letter to the North Pole, and a meet-and-greet with Santa! This event is free. In case of rain, event will be cancelled. For more information, please call (818) 548-2792.

[Breakfast with Santa Flyer](#)

December 7 – Montrose Christmas Parade – 6:10 p.m.

*Montrose Shopping Park
2200-2400 block Honolulu Ave.*

The City of Glendale is proud to sponsor the Montrose Christmas Parade! 2019 marks the 43rd year of the parade, which will be held on Saturday, December 7, 2019, at 6:10 p.m. The Montrose Christmas



greater downtown glendale association | Community Development | Community Services & Parks

The City of Glendale and Community Services & Parks are proud to host Holidays In The Paseo in conjunction with the Greater Downtown Glendale Association and presented by Economic Development.

UGLY SWEATER PARTY IN THE PASEO



Saturday, December 21, 2019
4pm – 7pm

(Food will be served while supplies last)

Artsakh Paseo – between Wilson Ave. & Broadway
Enjoy an afternoon of pizza and treats with some of Santa's helpers. The afternoon will include crafts, dancing and an ugly sweater contest!

In case of rain, event will be cancelled. For more information, please call (818) 548-2792 or email: PBotancourt@Glendaleca.gov

[f](#) [t](#) [i](#) @MyGlendaleParks

Join us on Saturday, December 21, 2019 for an afternoon of pizza and treats (while supplies last) with some of Santa's helpers. The afternoon will include crafts for the kids, dancing, and an ugly sweater contest! This event is free and open to the public. In case of rain, event will be cancelled. For more information, please call (818) 548-2792.

Recycle Your Trees With Glendale Public Works!

Parade Association works all year long to plan this much loved community event. Check out the [Parade Map](#) and [Montrose Christmas Parade Website](#) for more information.

December 7 – NAMI Family & Friends Seminar – 10 a.m. – 11:30 a.m.

*Central Library
222 E Harvard*

NAMI Family & Friends is a free 90-minute seminar that informs and supports family members, partners, friends, and significant others who have loved ones with a mental health condition. Participants learn about diagnoses, treatment, recovery, communication strategies, crisis preparation and other resources. Learn more [here](#)

December 8 – Parent's Day Out – 10 a.m. – 4 p.m.

*Pacific Community Center
501 S Pacific Ave*

The Holidays are near, so it's time for you to "Drop and Shop!" We'll take care of the kids while you catch up on your holiday shopping list. The kids will enjoy a day filled with fun activities, food, and a movie. The fee is \$15.00 per child, ages 5 to 12 years old.

For registration or more information, please call (818)



The Public Works Department will recycle Christmas trees for free! All you need to do is remove all the decorations and place the tree at the curb on your regular collection day. Pickup will be on January 2, 2020 and continue through February 16, 2020.

*Due to extremely high demand, service can take up to two weeks, so please be patient.

For more information on how to recycle your tree with us, [click here](#).

CA Friendly Landscape Classes



Learn how to transform your yard into a beautiful water saving garden at our upcoming landscape class. Over 50% of a home's water usage comes from outdoor watering, so replacing turf grass with CA Friendly plants can help you significantly reduce your water usage and save you money. The class will take place on Saturday, February 1, 2020 from 9:00 a.m. to 12:00 p.m. [Click here to sign up](#). We hope to see you there!

Pennsylvania Avenue Rehabilitation Project

548-4098. [Flyer](#)

December 12– Club Maple Holiday Event – 5:30 – 8 p.m.
*Maple Park Community Center
820 E Maple St.*

The City of Glendale Community Services & Parks Department, Therapeutic Recreation Section would like to invite you to Club Maple's Holiday Event on Thursday, December 12, 2019, from 5:30 p.m. to 8:00 p.m.

The Club Maple Program serves adults with special needs. The program operates on a weekly basis on Thursday evenings at Maple Park Community Center. The program is designed to bring this community together through fun and social activities and events. For more information regarding Club Maple or the department's Therapeutic Recreation programs, please call (818) 548-3694.

December 12, 3:30 - 4:30 p.m. & December 14 1 p.m. - 4 p.m.-- Gingerbread House
*Maple Park Community Center
820 E. Maple St.*

Gather together at a Glendale Library, Arts & Culture location to decorate a gingerbread house you can proudly display all season long! Supplies will be provided. Registration is required. The December 12th event will be held at Casa Verdugo, Central, and Grandview Libraries, Library Connection @ Adams Square, Montrose and Pacific Park Libraries. The December 14th event will be held at Chevy Chase Library. Learn more [here](#).

December 13 at 7 p.m. & December 14 at 3 p.m.-- Fiesta de Las Luminarias
Casa Adobe de San Rafael



The rehabilitation of Pennsylvania Avenue is a joint project between the City of Glendale and County of Los Angeles. It will be completed by the end of December 2019. The street improvement portion of the project was funded by the City's and County's annual allocation of STP-L funds and 2016 Repurposed Federal Earmark Funds through Caltrans. Caltrans obligated funds for the construction, construction contingency and construction engineering phases. The City's Measure R Funding Agreement with Los Angeles County Metropolitan Transportation Authority (Metro) allowed for the construction, construction contingency, and construction management of the modification of traffic signal systems at Interstate 210 Freeway on and off ramps on Pennsylvania Avenue.

The rehabilitation work started in November 2018 and included the selective removal and repair of damaged curbs, gutters, sidewalks, driveways, and cross gutters; selective removal and replacement of deteriorated asphalt pavement; construction of curb ramps to meet Federal Americans Disabilities Act (ADA) guidelines; construction of curb extensions at selected intersections; overlay of Asphalt Rubber Hot Mix pavement; installation of new traffic striping, pavement markings and signage; and traffic signal modifications. A community informational meeting was held in February of 2018 in anticipation of the project. The presentation can be viewed [here](#).

Recycling Resources for Educators

1330 Dorothy Dr.

Glendale Beautiful invites you to see the historic Casa Adobe de San Rafael on December 13 surrounded in candlelight and to enjoy traditional refreshments, a cacao ceremony, and entertainment inside the adobe and throughout the park beginning at 7:00 p.m.! Then, on December 14, enjoy entertainment from Ballet Folklorico Mexico Azteca and a piñata for children beginning at 3 p.m., followed by a piano recital at 5:00 p.m. Donations welcomed. For more information, please contact info@glendalebeautiful.org.

Flyer

**December 14 & 21--
Candlelight Tours- 6:30 - 8:30 p.m.**

Doctors House Museum & Gazebo

1601 W Mountain St.

Join The Glendale Historical Society for an open house style tour where guests may explore the Doctors House in Brand Park as it is decorated for a Victorian Christmas. Refreshments and live holiday music will be enjoyed in the gazebo. A donation of \$10 per person is appreciated.

Visit

glendalehistorical.org/candlelight-tours, or call (818) 242-7447, for more information.

December 14 & 21 – Brand Library Holiday Open House, 6:00 p.m. – 8:00 p.m.

*Brand Library & Art Center
1601 West Mountain Street*

Live music, holiday crafts, snacks and festive good cheer!

The amazing jazz and pop singer Alison Lewis will be performing with pianist Stephanie Meyers on December 14, from 6:30-7:30pm.

Then, on December 21, the award winning duo of cellist Mark Bassett and pianist Tae Yeon Lim will be performing from 6:30-7:30pm. It is a holiday tradition sponsored by The Glendale Historical Society. Admission is free. Learn more [here](#).

December 14 -- Holiday at the Old Stone Barn-- 5:30 p.m. -



The Public Works Department shares the commitment and concern of our educators when it comes to teaching the importance of recycling to the new generation, which is why we have created your very own page! Check out www.GlendaleRecycles.com/teachers, where you can find useful resources such as lesson plans, games, and other activities that can help you get your students excited about recycling. Feel free to contact recycle@glendaleca.gov if you have any questions.

Start the New Year Right by Putting Recyclables in the Bag!



The Public Works Department provides FREE Reusable Tote Bags to

7:30 p.m.

[*Deukmejian Wilderness Park
3429 Markridge Rd.*](#)

Join us for a family-oriented evening of holiday entertainment in the amphitheater of the Old Stone Barn in Deukmejian Wilderness Park. The Towne Singers, a community choir serving Pasadena and the Foothills, will perform followed by dancing from Pam Kay and The Tap Chicks. Visit the craft table to make a holiday gift for yourself or a loved one. We will serve hot chocolate and cookies. This event is FREE, but seating is limited. Please call (818) 548-3795 to reserve your place. In case of rain, this event will be cancelled.

[Holiday at the Old Stone Barn
Flyer](#)

December 15 -- Holiday Tea and Japan Culture Day-- 12 - 4:00 p.m.

[*Brand Friendship Garden
1601 W Mountain St.*](#)

Join the Friends of Shoseian for their biggest event of the year with tea ceremony, martial arts, taiko drums, Calligraphy, bonsai, ikebana and more! Great music and food!

A donation of \$20 per person is appreciated. Please RSVP to friends@shoseianteahouse.com.

[Holiday Tea and Japan Culture
Day Flyer](#)

**December 18 - 2ND Annual
Gingerbread Contest, 3:00 – 6:00 p.m.**

[*Pacific Park Library
501 South Pacific Avenue*](#)

Gather together with friends or family to see if you have what it takes to take home the gold

Glendale residents. The purpose of these bags is to make the separation of recyclable items from trash easier.

If you are a resident, a landlord, or a property manager, you may request Totes for yourself or for your entire multifamily property by contacting the Integrated Waste Management Division at recycle@glendaleca.gov.

*If you have already received a Recycling Tote Bag, but aren't sure how to use it, [click here](#) to check out this informational PSA.

Save Money by Reducing Waste

City's Organics Program

Businesses serviced by the City of Glendale may be eligible to participate in the City's pilot Organic Recycling program. For more information, contact the City at (818) 548-3916 or email recycle@glendaleca.gov.

Other commercial customers should contact their waste hauler for more information. Learn more about all that the Public Works Department Integrated Waste Division offers by visiting www.glendaleca.gov.

CalRecycle, the California Department of Resources Recycling and Recovery, requires businesses and multi-family properties to comply with Assembly Bills 341 and 1826, as well as Senate Bill 1383, which require the recycling of bottles, cans, and organic materials (food waste and green waste).

Does your business need help recycling these materials? Contact your hauler directly for more information. If your property is serviced by the City of Glendale, call (818) 548-3916 or email recycle@glendaleca.gov to join City's Free Organics Program.

Maple Park All-Inclusive Playground Grand Opening August 17



The Public Works Department will NOT provide trash, recycling or green waste collection service on the following holidays:

- December 25th (Christmas)
- January 1st (New Year's Day)
- Residents with collection on Wednesday, Thursday, and Friday will be serviced one day later than their regular collection day (Wednesday will be picked up on Thursday, Thursday on Friday, and Friday on Saturday). Monday and Tuesday

(ribbon that is)! Pick up a separate flyer for more details and rules at any Library, Arts & Culture location. Learn more [here](#).

December 20 - Friday Night Lights, 3:00 – 5:30 p.m. - 8:30 p.m.

*Verdugo Skate Park
1621 Canada Blvd.*

Friday Night Lights is offered every third Friday of the month. Enjoy some of the newest skateboard videos on a big projection screen. There will be a raffle and one prize given away monthly. Free snack with the purchase of a raffle ticket. Free admission.

For more information, please call (818) 548-2786.

December 20 - Youth Employment Workshop, 6 – 7:00 p.m.

*Pacific Community Center
501 S Pacific Ave.*

Glendale Youth Alliance (GYA) will speak to youth about how to build an effective resumes, preparing them to apply and compete for the upcoming hiring season for summer jobs.

Glendale Youth Alliance programs are designed to build civic values in youth, provide a foundation to learn job skills and to become productive

participants of the workforce. A job can change the life of an adult professional and more so, the life of a young man or a woman seeking to find their place in the world to become self-sustaining. The Youth Employment workshop will also focus on resume building, and job skills. Learn more [here](#).

Check the [City's calendar](#) and [City Library calendar](#) for changes in date, time, or location.

The Latest Magazines Online from the Library



collection will be uninterrupted.

Call the Public Works Department's Integrated Waste Management Division at (818) 548-3916 for more information.

Employment Incentive Program for Young Adults

The Employment Incentive Program serves young adults ages 18-24. Participants are placed primarily in private businesses to obtain the necessary skills to gain future employment. The grant pays for the initial 200 training hours as an incentive for the employer to hire the participant. Funding for this program is provided by the Workforce Innovation & Opportunity Act (WIOA).

Participants interested in the Employment Incentive Program must be:

- Between the ages of 18 and 24
- Not attending school at time of enrollment
- Live in Glendale, Burbank or La Canada Flintridge
- Be willing to work part-time, full-time and/or on weekends
- Program also has other eligibility requirements.

The main objective of the Employment Incentive Program is to secure long-term unsubsidized employment for the participants after the completion of the 200 hours of on-the-job training.

RIISE Project

Download the latest magazines with RB Digital. Read online on your computer, or use the RB Digital app with this free magazine service from Library, Arts & Culture. Sign in with your library card [here](#).

Holiday Closures

City Office Closures:

- Christmas Eve: open from 7:30am-12:30pm Tuesday, December 24, 2019
- Closed Christmas Day, Wednesday, December 25, 2019
- Open New Year's Eve: Tuesday, December 31, 2019
- Closed New Year's Day: Wednesday, January 1, 2020

Library Closures:

- Christmas Eve: Tuesday, December 24
- Christmas Day: Wednesday, December 25
- New Year's Eve: Tuesday, December 31--Pacific Park Library will be closed all day, and other locations will close at 5:00 p.m.
- New Year's Day: Wednesday, January 1, 2020
- See the Library, Arts & Culture holiday schedule [here](#).

2020 Glendale Homeless Count

Volunteers Wanted!



Regional Immediate Intervention Services for Employment



- Paid Work Experience
- Work Readiness Training
- One-on-One Mentorship
- Job Placement

Program requirements include but not limited to participation in:

Continuum of Care Programs

- Rapid Re-Housing
- CoC Rental Assistance
- Transitional Housing
- Emergency Shelters

Priority will be given to Glendale and Burbank programs.

To learn more about how to qualify, contact:

Rasheedah Scott

(818) 937-8011 or (818) 937-8001

Email: rascott@glendaleca.gov

Verdugo Jobs Center (VJC)
1255 S. Central Ave.
Glendale, Ca. 91204
www.verdugojobscenter.org

The Workforce Innovation and Opportunity Act is an Equal Opportunity Program. Auxiliary aids and services are available upon request to individuals with disabilities. TTY (818) 548-3857



The RIISE grant creates the Regional Immediate Intervention Service to Employment (RIISE) project, which brings together several community partners to train and prepare participants for full-time employment. RIISE will target individuals that are homeless and are either foster youth, victims of domestic violence, have disabilities, or are receiving government assistance. The City of Glendale's Continuum of Care, in partnership with Ascencia and other community organizations, will identify and refer candidates to the program. The Verdugo Jobs Center (VJC) will provide counseling and career guidance, as well as work readiness workshops to prepare participants for job search. Work readiness also includes training in communication skills, interpersonal skills, conflict resolution, and other skills needed to be successful in the work environment. The City of Glendale's Community Services & Parks Department will provide temporary paid work experience to qualify for future jobs while earning wages. Individuals will be supervised while working at park sites conducting general park maintenance. The VJC will provide job placement assistance and supportive services, including interview and work clothing, and transportation assistance to secure employment.

For more information please contact Rasheedah Scott, Case Manager at (818) 937-8011.

Maple Inclusive Play Day (MIP DAY)

Glendale's Homeless count is on January 22, 2020 from 7:00 p.m. to 12:00 a.m. Sign up to volunteer at GlendaleCA.gov/HomelessCount. Donate items to help our homeless neighbors endure the winter. [View the Wish List](#) to see what items are needed and where to donate.

US Census Now Hiring for Multiple Positions!

Contact Verdugo Jobs Center for information regarding the positions and a chance to meet with the employer! Call Jack Krikorian at (818) 937-8071 .

Looking Ahead

January 3, 17, & 31 – Teen Night Out at 5 p.m.
Pacific Park Community Center
501 S Pacific Ave

Glendale Teen Night Out is designed to provide free teen activities that include billiards, ping pong, karaoke, PS4, and teen coordinated activities. Snacks and refreshments will be served.

January 22 – 2020 Homeless Count– 9 – 7 p.m. - 12 midnight.

Every January we count our homeless neighbors throughout Glendale. The 2020 Homeless Count will be conducted on January 22, 2020 from 7:00 p.m. to midnight by City of Glendale staff, Glendale Police Department, and volunteers.

Click [here](#) if you are interested in volunteering for the count.

Notice of Availability of Community Development Block Grant (CDBG) Funds

The City of Glendale is accepting applications for eligible Community Development Block Grant (CDBG) funded projects or services for the next Fiscal Year, July 1, 2020 through



CITY OF GLENDALE
COMMUNITY SERVICES & PARKS



MAPLE INCLUSIVE PLAY DAY

MIP DAY

**MAPLE PARK, 820 E. MAPLE STREET
GLENDALE, CA 91205**

**Saturday, December 21, 2019
11:00 am - 1:00 pm**

**FUN ACTIVITIES AT THE ALL-INCLUSIVE
PLAYGROUND AT MAPLE PARK!**

For questions and more information, call (818) 548-3694.

Parks Make Life Better!

   #MyGlendaleParks @MyGlendale

 REASONABLE ACCOMMODATIONS WILL BE MADE UPON REQUEST. PLEASE NOTIFY US WITHIN 72 HOURS PRIOR TO EVENT DATE.

The City of Glendale Community Services & Parks Department recently installed a brand new Shane's Inspiration All-Inclusive Playground at Maple Park. Join us every third Saturday of the month for MIP Day! MIP Day is an opportunity for children of all abilities and ages to come and play at the playground while parents supervise and meet other families. Therapeutic Recreation Program staff will be present and help event participants with various arts and crafts projects, face painting, and more. The Parks Department would like to increase social inclusion and help create a safe place for all members of our community through play! Please join us at our next event on Saturday, December 21, 2019 at 11 a.m.

Job Seeker Services and Business Resources Available at the Verdugo Jobs Center

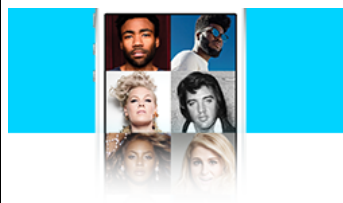
June 30, 2021, through 5:00 p.m. on Friday, December 27, 2019 at the City of Glendale's Community Services & Parks Administration Office at 613 E. Broadway, Rm 120, Glendale, CA 91206.

[View the Public Notice for more information.](#)

Pacific Pool is Open Year Round!

Please visit www.glendaleaquatics.com for program information, or call (818) 937-7433 to speak with pool staff. A detailed programming schedule is available online.

Freegal Music from the Library



FREE MUSIC
with library card



Freegal is free music service from Library, Arts & Culture. Access 15 million+ songs, including Sony Music's catalog of legendary artists. Features include 24/7 streaming and three downloads per week that you get to keep. There is no software to download, and there are no digital rights management (DRM) restrictions. Sign in with your library card [here](#).

Other Newsletters

[Community Services and Parks](#)

[Economic Development](#)

Verdugo Jobs Center

Employment Services

Verdugo Jobs Center offers free programs to help you get trained, find employment and retain your job!

Career Services	Job Skills Training	Workshops
<ul style="list-style-type: none"> • Job Connections • Career Counseling • Job Search Assistance 	<ul style="list-style-type: none"> • On-the-Job Training • In-Class Training 	<ul style="list-style-type: none"> • Resume Writing • Interview Skills • Job Success

Job Fairs & Recruitments

- Over 50 hiring events a year hosted by the VJC
- On-site interviews are conducted by hiring managers of various businesses

For more information attend the Orientation every Monday at 10:00 AM
 Must be registered on CalJobs at www.caljobs.ca.gov
 Bring your ID and Right to Work Documents

Verdugo Jobs Center

1255 S. Central Ave. Phone: 818-409-0476
 Glendale, CA 91204 TTY: 818-548-3857
 Mon—Fri 8:00 am – 5:00 pm Fax: 818-409-0496

www.verdugojobscenter.org



The Workforce Innovation and Opportunity Act is an Equal Opportunity Program.
 Auxiliary aids and services are available upon request to individuals with disabilities. TTY (818) 548-3857.

Are you looking for work? The Verdugo Jobs Center (VJC) provides job placement assistance, career counseling, information about new in-demand jobs, and short-term training programs. VJC has training funds available to assist individuals who have been laid off or are currently receiving government assistance. You can learn more about how to qualify for training funds by attending a VJC orientation. Training funds are only available for a limited time. RSVP to attend a VJC orientation by calling (818) 937-8001.

Are you a hiring manager or business owner? The VJC offers free access to large facilities for on-site recruitments and interviews, as well as assigned VJC recruitment assistants; customized pre-employment orientations to meet your needs; and targeted candidate searches and pre-screening services.

Contact a Verdugo Jobs Center Representative today!
Verdugo Jobs Center
 1255 S. Central Avenue, Glendale, CA 91204
 (818) 937-8001

The [Verdugo Jobs Center](http://www.verdugojobscenter.org) is operated by the Workforce Development Section of the Community Services & Parks Department.

Library Offers Access to over 500 Lifelong Learning Courses

[Glendale Water & Power](#)

[Library, Arts & Culture](#)

[Previous City Connection Newsletters](#)

Emergency Preparedness

Do you know who to call or where to get the latest information in the event of a citywide emergency? Click on the image below to find out!

My Glendale

DURING AN EMERGENCY FIND UPDATED INFO HERE
www.glendaleca.gov
www.glendaleca.gov/EmergencyAlerts

@MyGlendale
 GTV6 (Spectrum Ch. 6, AT&T Ch. 99)

EMERGENCY NUMBERS

Emergencies 911
 Police Department (818) 548-4911
 Fire Department (818) 956-4800
 GWP Emergency line (818) 548-2011
 Public Works Emergency line (818) 548-3950

IMPORTANT NUMBERS

Gas Company (800) 427-2200
 Humane Society (626) 792-7151
 Red Cross – Glendale (818) 243-3121

Winter Leisure Guide Available Online!

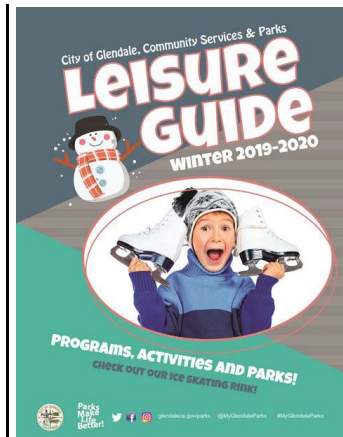


Library, Arts & Culture is pleased to introduce a new way to pursue continuing education and lifelong learning through Universal Class. The online learning platform features over 500 courses in over 30 subject areas, including Parenting and Family, Office Skills, Business and Career Training. The Top 10 Universal Class courses based on user enrollment include:

- Excel and Advanced Excel 2016
- Typing and Keyboarding 101
- Accounting & Bookkeeping 101 for Everyone...and more!

Coursework is entirely self-paced; most course work can be completed in 10-20 hours. All coursework is secure, private and is saved as you learn. Users may take up to five courses at a time and take up to six months to complete a course. Library users may access Universal Class with their library card [here](#), contact staff at any Library, Arts & Culture location, or call 818-548-2021.

Fiesta de La Luminarias



The Leisure Guide is the Community Services & Parks Department's quarterly e-publication where you can find information about programs, classes, services, and events that are offered each season. Want to see a list of all of our parks or learn about our rental facilities? Looking for our department's phone directory? That's inside too!

Click here for the [Winter Leisure Guide 2019-2020](#)



**GLENDALE BEAUTIFUL
INVITES THE COMMUNITY TO THE**

Fiesta de Las Luminarias

FRIDAY & SATURDAY DECEMBER 13TH & 14TH 2019

**GLENDALE'S HISTORIC
CASA ADOBE DE SAN RAFAEL,
1330 DOROTHY DRIVE GLENDALE, CA**

*Join us for this free event at the historic Casa Adobe surrounded
in candlelight and enjoy traditional refreshments and
entertainment inside the adobe and throughout the park!*

FRIDAY, DECEMBER 13TH
7:00pm - Lighting of candles & Cacao Ceremony
with Madre Jaguar

SATURDAY, DECEMBER 14TH
3:00pm - Ballet Folklorico Mexico
Azteca & Piñata for kids
5:00pm - Piano Recital

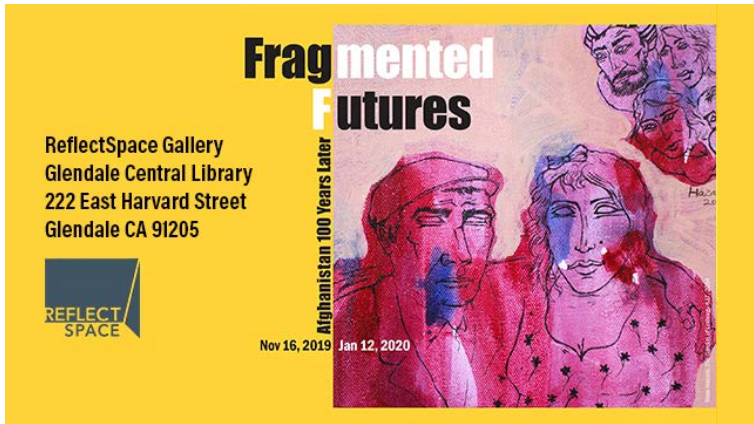
**Glendale
Beautiful**

**CITY OF GLENDALE
COMMUNITY SERVICES & PARKS**

Glendale Beautiful invites you to see the historic Casa Adobe de San Rafael on December 13 surrounded in candlelight and to enjoy traditional refreshments, a cacao ceremony, and entertainment inside the adobe and throughout the park beginning at 7:00 p.m.! Then, on December 14, enjoy entertainment from Ballet Folklorico Mexico Azteca and a piñata for children beginning at 3 p.m., followed by a piano recital at 5:00 p.m. Donations welcomed.

For more information, please contact info@glendalebeautiful.org.

Fragmented Futures: Afghanistan 100 Years Later Exhibition



**Fragmented
Futures**

ReflectSpace Gallery
Glendale Central Library
222 East Harvard Street
Glendale CA 91205

**REFLECT
SPACE**

Afghanistan 100 Years Later

Nov 16, 2019 Jan 12, 2020

Marking Afghanistan's centennial, the exhibit reflects on how the aspirations of Afghanistan and its diaspora were interrupted, transformed, and reborn since its independence. Learn more [here](#).

Homework Help

HOMEWORK



Homework Help NOW



Online Tutoring and a Unique Suite of
Powerful Learning Tools for Patrons of All Ages

Did you know, Glendale Libraries offer online tutoring for children, teens, and adults? Click [here](#) for more information!

Hoover High School's Annual Holiday and Tea Boutique



Hoover High PTA is proud to host the second annual Holiday Tea and Boutique at Hoover High on Saturday, December 14, 2019. Hoover families and the community will enjoy an English tea service, shop our boutique and silent auction, and see our school.

Please partner with us to make this day festive and memorable as well as provide much needed funds for our student programs this year.

Any donation, gift in kind, or gift card is greatly appreciated. Click [here](#) to make a donation.

This year's goals include:

- Scholarships to deserving seniors
- Cold water-filling stations around the campus to provide easily accessible safe and filtered water to all students.
- Provide community service opportunities to all students, which allows them to benefit their community and helps them strengthen their resumes and college applications.

- Sponsor the reflections Art Program, which encourages students to explore their thoughts and feelings through visual and performing arts. PTA started this national program in 1969.
- Contribute to monthly programs focused on rewarding positive behaviors
- and much more!

Hoover High School PTA's mission has always been to support our school by engaging and empowering families and communities to advocate for all children. As one of its core values, the Hoover High PTA is dedicated to every child's educational success, health, and well-being through family and community engagement.

All of us in the Hoover High PTA would like to thank you in advance for your support.

2019 Glendale Homeless Connect Day A Success!

On Friday, November 15, 2019, nineteen (19) local private and public service providers came together at Central Park, from 10:00 a.m. to 2:00 p.m., to provide information and resources to homeless persons that will facilitate obtaining services and housing. A total of 55 individuals were served.

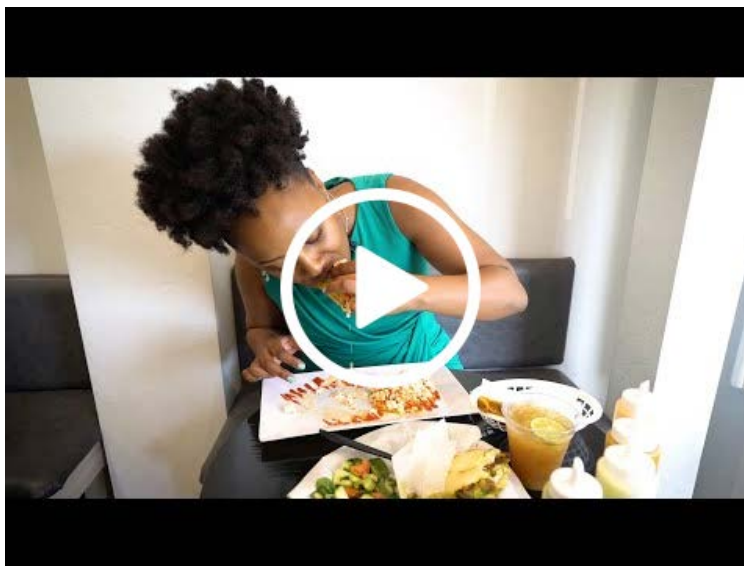
Among the agencies represented were Ascencia, The Salvation Army, Los Angeles County Department of Public Social Services, Social Security Administration, Los Angeles County Department of Mental Health, Catholic Charities, YWCA of Glendale, Glendale Adventist Medical Center, Dignity Health Glendale Memorial Hospital and Health Center, Los Angeles County Department of Public Health, Glendale Police Department, and City of Glendale. Services included haircuts, snacks, dental screenings, medical screenings, employment referrals, and more.

[Click here to view a complete summary of the event](#) and more information on Glendale Continuum of Care programs and services.

Catch us on YouTube!



This month's pieces:
[Glendale's Holiday on Ice](#)
[Holiday Tree Lighting 2019](#)
[Montrose Christmas Parade 2019](#)
[Sandbags](#)
[Spice of Glendale](#)
[Monthly Housing Subsidy Program](#)



Be sure to tune in to Charter channel 6 or check the City's YouTube channel for new episodes every month!



Stay Connected

This is an official publication of the City of Glendale, distributed by the Office of Communications and Community Relations. For inquiries, please contact City Connection Editor Solene Manoukian at _____ or (818) 548-4844.