



[Click here to view this message in your browser.](#)

This publication is brought to you by Mayor Ara Najarian, and City Councilmembers Paula Devine, Vartan Gharpetian, Vrej Agajanian, and Frank Quintero

February 2020

Every Vote Counts!



February 22 - March 3, 2020

GlendaleVotes.org

The City of Glendale would like to remind you to vote beginning Saturday, February 22nd through Tuesday, March 3rd, 2020 in the Glendale Municipal Election.

This election includes the following races:

- 3 seats for City Council
- 2 seats for Community College Board of Trustees, Areas 1 and 5
- 2 seats for Glendale Unified School Board, Areas A and E

The Glendale Municipal Election now coincides with the Presidential Primary

City Manager's Message



Yasmin Beers

Glendale's Municipal Elections now coincide with California State Primary Elections and are run by the LA County Registrar/Recorder, which means Election Day is around the corner – March 3, 2020.

This election you will be able to vote for:

- 3 seats for City Council
- 2 seats for Community College Board of Trustees, in areas 1 and 5
- 2 seats for Glendale Unified School Board, in areas A and E

To view the list of candidates and their candidate statements, visit GlendaleVotes.org, your one-stop shop for all election information. Information is all also

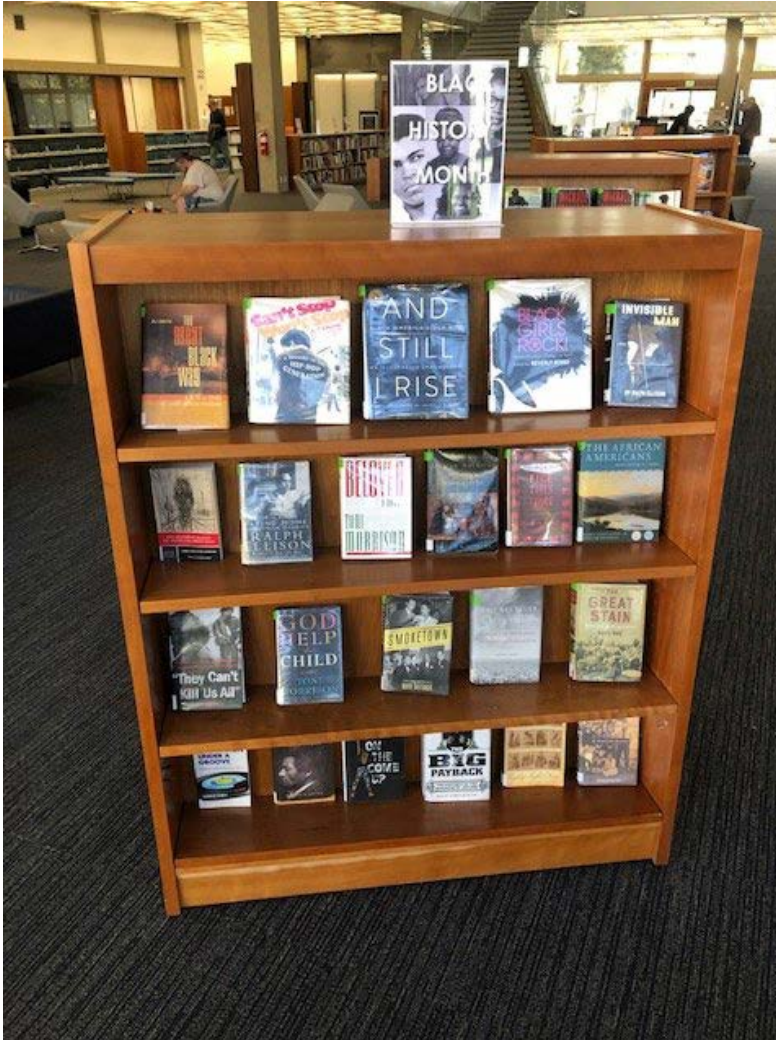
Election and is run by Los Angeles County.

A list of Glendale's Vote Centers are now available [here](#).

If you have questions or want to learn more, visit GlendaleVotes.org or call (818) 548-4000.

Remember, voting is one of our most important civic duties and we want to hear from you. Glendale votes and so should you!

Black History Month with Glendale Libraries



Glendale Central Library is working with local community group Black in Glendale to coordinate an exhibit in honor of Black History Month! The display complements the current ReflectSpace exhibition, ACCESS, which celebrates the 100 year anniversary of women's right to vote by highlighting the Black female experience as it relates to access and representation in our modern day society. In addition, Library staff have also curated a book display for Black History Month.

Brand Library is also participating with a collage of artwork by African-American artists, plus books about African-American artists from the children's collection. Shelves throughout the library highlight books about Black artists and musicians from the adult collection. Work by artist Betye Saar is featured in glass display cases.

Census 2020

available in Armenian, Spanish, Korean, and Tagalog.

Every address in Glendale will soon be receiving a mailer that describes all of the changes to the upcoming election. That said, every individual has a different preference for how they obtain information, so I'll take this opportunity to describe those changes here.

Moving the election date to the State Primary election is just one of the many changes coming to you.

Other changes coming are how we vote and where we vote. The LA County's effort to modernize our voting processes, known as Voting Solution for all People (VSAP), has several different components to it; such as flexible options for voting, a new ballot marking device, new Vote by Mail ballot, and new Vote Centers.

Vote Centers allow voters to cast a ballot at any Vote Center location in the County over an 11-day period, beginning on Saturday, February 22, 2020. The last day to vote in this Election at any Vote Center in LA County is Tuesday, March 3, 2020. A listing of Vote Center locations in the Glendale area are listed on our website [here](#).

Vote Centers will offer new, fully accessible Ballot Marking Devices to make voting easier, including translation of the ballot into 12 languages. These devices will allow voters to cast their votes on a screen, review their selections, then print their ballot for a final review. When the voter has finished reviewing the ballot, they will insert the ballot back into the machine which transfers the ballot directly into a secured ballot box. It is important to note that when there are more than four candidates running for one office, their names will appear on multiple screens and voters will need to tap the "MORE" button at the bottom of the screen to view all candidates to make their selection.

Be sure to register to vote if you haven't already done so. The deadline to register for this election is February 18, 2020 in



**Questions about
the 2020 Census?
We've got answers.**

census.lacounty.gov

LA COUNTY
Census 2020

BE COUNTED ✓

The 2020 Census is fast approaching! Once each decade, the U.S. Census Bureau attempts to count every person in the United States.

A complete and accurate count of California's population is essential. The data collected by the decennial Census determines the number of seats each state has in the U.S. House of Representatives and is used to distribute billions of dollars in federal funds to state and local governments.

See timeline below for more information:

order to have your name appear in the Electronic Pollbook. If you happen to miss this deadline, you may still vote at any Vote Center in Los Angeles County through Conditional Voter Registration. To register to vote, visit RegisterToVote.ca.gov.

If you would like to vote by mail, you may request a vote-by-mail ballot from February 3 through February 25, 2020. Vote-by-mail ballots can be returned by mail or in-person at designated drop-off locations. Visit LAVote.net to request a vote-by-mail ballot or to apply online.

If you have questions or want to find out more about Glendale elections, vote-by-mail, or L.A. County's new modern voting methods, visit GlendaleVotes.org or call (818) 548-4000.

Regardless of who fills the available seats, we are committed to serving you and giving you the best quality of life possible. I look forward to working with the City Council and City Staff to continue to give you the level of service that makes our Jewel City special.

Voting is the cornerstone of our democracy. I encourage everyone to exercise their civic duty and take some time out of their day (through an eleven day period) to vote!

Calendar

Throughout February - Valentine's Day Crafts & Programs

Enjoy arts, craft, and storytime programs for children in February. Adults will find a number of great MakerSpace workshops too. Learn more [here](#).

Every Other Friday - Teen Night Out, 5:00 p.m. - 9:00 p.m.

Pacific Community Center
501 South Pacific Avenue
Glendale Teen Night Out is designed to provide FREE teen activities that include billiards, ping pong, karaoke, PS4, and teen coordinated activities. Snacks and refreshments will be served. Please call (818) 937-7240 with any questions. Learn more [here](#).

WHAT WE WILL SEND IN THE MAIL	
On or between	You'll receive:
March 12-20	An invitation to respond online to the 2020 Census. (Some households will also receive paper questionnaires.)
March 16-24	A reminder letter.
	If you haven't responded yet:
March 26-April 3	A reminder postcard.
April 8-16	A reminder letter and paper questionnaire.
April 20-27	A final reminder postcard before we follow up in person.

If you are interested in working for the 2020 Census, please visit [Census.CA.gov](https://www.census.gov).

Celebrate Black History Month with a Free Concert!

Every Tuesday - Zumba for Adults, 9:30 a.m. - 10:30 a.m.
Maple Park Community Center Gymnasium
[820 E. Maple St.](#)

Come on down to Maple Park, and get in shape while you dance to some great music! \$1.00 for Activity Card holders. \$2.00 for Non-Activity Card holders. For more information, please call (818) 548-3694.

[Zumba for Adults Flyer](#)

Through March 20 - Beyond Embodiment

Brand Library and Art Center
 1601 West Mountain Street

A unique art experience that probes the boundaries of body and being through actual and virtual space. Situating the body as form and function, material and process, site and portal, the artists investigate the potentialities of the human condition. Learn more [here](#).

February 1 – Adams Square Mini Park Gas Station: Lucas Novak

Adams Square Mini Park
 1020 E Palmer Ave.

"Puppets and Portraits" by artist Lucas Novak is focused on stop-motion, Claymation videos, puppets and paintings will be on display at the Adams Square Mini Park Gas Station from January 21 – February 14, 2020.

Artist Reception is on Saturday, February 1, 2020 2pm-4pm.

Learn more [here](#).

February 5 - Career Pathways, 1:00p.m.

Central Library TechSpace



Come and celebrate Black History Month by attending a free concert on February 8th!

The Azusa Pacific University Masterworks Chorale and jazz artist, J. Michael Oneal, in partnership with First Baptist Church of Glendale, present a Black History Month Concert in Glendale on **Saturday, February 8 at 7:00 PM**. This concert is free, and the venue is the historic sanctuary of First Baptist Church located at 209 N. Louise Street, Glendale, CA 91206.

The Masterworks Chorale is an 80-voiced choir, and the guest artists is renowned jazz pianist, J. Michael Oneal. Tributes to Jess ye Norman, Jester Hairs ton, and Robert Ray will be a part of the concert, and the music of the evening features spirituals, jazz piano, choral music, and Gospel hymns accompanied by a Hammond B-3 Organ and the historic 72-rank Ester Pipe Organ.

"Howl at the Moon" with Glendale K9!

[Computer Lab](#) [222 E Harvard St.](#)

This free 1 hour workshop delves into in-demand occupations in the City of Glendale, which primarily revolve around retail, food/hospitality and healthcare. Digital resources will be provided including JobNow, an online service which provides personal assistance with resumes, cover letters, and interview coaching for free. This program is sponsored by the Verdugo Jobs Center. Library, Arts & Culture. Learn more [here](#).

[February 8 - Riverwalk](#) [Workday, 8:00 a.m. - 12:00 p.m.](#) [Glendale Narrows Riverwalk](#)

Join us down by the riverside as we work to remove invasive plants from the landscaped areas along the L.A. River. Participants are asked to wear sturdy shoes, protective clothing, and bring sunscreen, sun glasses and a hat. We'll provide tools, gloves, drinks and snacks. Families, individuals, clubs, and students needing community service hours are welcome. Groups of 10 or more, please RSVP at (818) 548-3795.

[Riverwalk Workday Flyer](#)

[February 8 – Brand Associates](#) [Music Series: Bassist Jory](#) [Herman with violinist Michelle](#)

2ND ANNUAL
Howl At The Moon
 Saturday, March 7th, 2020 • Starting at 6:00 PM
 (Doors open at 5:00 PM)

Comedy Night

An Evening of Comedy with **Ron Pearson and Friends**

Glen Arden Club
 357 Arden Ave, Glendale, CA 91203
 www.gpf.org

SPONSORSHIP OPPORTUNITIES

<p>Platinum Sponsor - \$5,000</p> <ul style="list-style-type: none"> • Patch w/ K9 shoulder patch and challenge coins • Top tier recognition on GPF website • Acknowledgement during the event • 13 Event tickets, K9 Challenge coins, and drink tickets • Premium table reservations 	<p>Gold Sponsor - \$3,000</p> <ul style="list-style-type: none"> • Patch w/ K9 shoulder patch • Recognition on GPF website • Acknowledgement during the event • 8 Event tickets, K9 Challenge coins, and drink tickets • Table reservations 	<p>Silver Sponsor - \$1,500</p> <ul style="list-style-type: none"> • Recognition on GPF website • Acknowledgement during the event • 4 Event tickets, K9 Challenge coins, and drink tickets 	<p>Bronze Sponsor - \$500</p> <ul style="list-style-type: none"> • Recognition on GPF website • Acknowledgement during the event • 2 Event tickets, K9 Challenge coins, and drink tickets
---	---	---	---

Individual Ticket - \$95

- Event Admission
- Dinner

Thank you to Our Event Sponsor
Adrian B. Dares
 President and CEO

EVENT ADMISSION INCLUDES

- Live Auction
- No Host Cocktail Hour
- Full Dinner Buffet
- Visit from the Glendale K9s & Handlers
- Comedy Show Featuring Numerous Nationally Acclaimed Comedians

For more information, contact Alex Baroian: alex@gpf.org

To become a sponsor or purchase tickets, please visit www.gpf.org

The Glendale Police Department's K9 Unit is supported through the nonprofit Glendale Police Foundation, a 501(c)(3) organization, community donations, and fundraising events such as Howl at the Moon.

Come join the Glendale Police K9 Unit for an evening of cocktails, dinner, laughs, and thrills! The 2nd Annual "Howl at the Moon" Comedy Night is scheduled for Saturday, March 7th, 2020 starting at 6pm at the beautiful Glen Arden Club. Tickets include:

- Live Auction
- No Host Cocktail Hour
- Full Buffet Dinner
- Visit from the Glendale K9s and Handlers
- Comedy Show featuring Ron Pearson and other Nationally Acclaimed Comedians!

Need a tax write off? Consider being a sponsor and see what we have to offer! The K9 Unit is funded with community donations and this yearly fundraiser through the Glendale Police Foundation, a 501c(3) organization. For more information, contact Alex Brian at Alex@gpf.org. Check out photos from last year's extraordinary event!

Get to Know Glendale Parks

Tseng and narrator Cloie Wyatt Taylor, 2:00 p.m. – 4:00 p.m.
Brand Library & Art Center
 1601 West Mountain Street
 LA Philharmonic members bassist Jory Herman and violinist Michelle Tseng join forces with actress/singer/choreographer Cloie Wyatt Taylor. Learn more [here](#).

February 10 -Cookbook Club: Super Bowl Eats, 5:00 p.m. – 6:30 p.m.
Pacific Park Library
 501 S. Pacific Ave.

Check out a cookbook relevant to this month's topic, Super Bowl Eats, try at least one recipe, and bring in a sampling to share with others potluck style. Learn more [here](#).

February 12 - Storytime at Maple Park, 10:00-10:30 a.m.
Maple Park Community Center
 820 E Maple St.

Come to Maple Park Community Center, and we will bring the library to you! Storytime is offered on the 2nd Wednesday of each month during the Tot-Time program at Maple Park Community Center.

[Storytime at Maple Park Flyer](#)

February 14 - Parent's Night Out, 6:00 p.m. - 12:00 a.m.
Pacific Community Center
 501 S Pacific Ave.

Drop off your kids for a night of fun activities, friends, food, and movies, while you spend an evening out doing whatever you want! The fee is \$15.00 per child, ages 5 to 12 years old.

Participants are encouraged to bring their pajamas, a blanket, and a pillow. For registration or more information, please call (818) 548-4098.

[Parent's Night Out Flyer](#)

February 15 - Wilderness Workday, 8:00 a.m. - 12:00 p.m.
Deukmejian Wilderness Park
 3429 Markridge Rd.

Help us water our Douglas Firs and Coast Live Oaks, assist with trail repairs, and remove invasive species from the park. This program is perfect for students who need community service



Trying to find more open space to plan a new adventure? Look no further, the City of Glendale is home to 47 parks and park facilities, including 37 parks, the Civic Auditorium, 4 community centers, 19 sports fields, and 4 historic buildings! The city's residents and visitors are able to discover 286 acres of park land and over 5,000 acres of open space.

Parks visitors have the opportunity to hike, play, and explore on their own or participate in one of Glendale's many programs! We have [Spring Day Camps](#) coming up as well as [aquatics programs](#), [sports programs](#), and so much more! When thinking of hiking in Glendale one might immediately think of Brand Park. However, there are many other trails in Glendale with breathtaking views including the Catalina Verdugo Trail and the Dunsmore Creek Trail to name a few! Click [here](#) for a full list of Glendale's trails.

List of Facilities:

Adams Square Mini Park
 Adult Recreation Center & Central Park
 Babe Herman Little League Field
 Brand Park
 Carr Park
 Casa Adobe de San Rafael
 Catalina Verdugo Adobe
 Central Park Paseo
 Cerritos Park
 Civic Auditorium
 Chess Park

Deukmejian Wilderness Park
 Doran Gardens Mini Park
 Dunsmore Park
 Elk Mini Park
 Emerald Isle Park
 Fremont Park
 Glendale Heritage Garden
 Glendale Narrows Riverwalk
 Glendale Sports Complex
 Glenoaks Park
 Griffith Manor Park
 Glorietta Park
 Harvard Mini Park
 Maryland Avenue Park

Maple Park and Community Center
 Mayor's Bicentennial Park
 Milford Mini Park
 Montrose Community Park
 New York Park

hours. Community and youth organizations are welcome. Please wear sturdy shoes and bring a hat, sunscreen, and protective clothing. Drinks and snacks will be provided. Groups of 10 or more, please RSVP at (818) 548-3795.

[Wilderness Workday Flyer](#)

February 15 - Maple Inclusive Play Day (MIP Day), 11:00 a.m. - 1:00 p.m.

[Maple Park Community Center](#)
 820 E Maple St.

MIP Day is an opportunity for children of all abilities and ages to come and play at the playground while parents supervise them and meet other families. The Department's Therapeutic Recreation Program staff will also be present and help event participants with various arts and crafts projects, face painting and more. Through play, the department would like to increase social inclusion and help create a safe place for all members of our community.

[MIP Day Flyer](#)

February 19 – Build A Solar Charger, 4:00 – 6:00 p.m.

[Glendale Central Library Auditorium](#)
 222 E Harvard St.

Build your own charger to power a cellphone or any other small device that has a rechargeable battery. Open to teens and adults. Presented by Tor Allen, Executive Director and founder of Solar Schoolhouse and The Rahus Institute. Register required, click [here](#).

February 21 - Friday Night Lights, 5:30 p.m. - 8:30 p.m.

[Verdugo Skate Park](#)
 1621 Canada Blvd.

Friday Night Lights is offered every third Friday of the month. Enjoy some of the newest skateboard videos on a big projection screen. There will be a raffle and one prize given away monthly. Free snack with the purchase of a raffle ticket. Free admission. For more information,

Nibley Park
 Oakmont View Park
 Pacific Community Center & Park
 Pacific Community Pool
 Palmer Park
 Pelanconi Park
 Piedmont Park
 Rockhaven Sanitarium
 Scholl Canyon Athletic Fields
 Scholl Canyon Golf Course & Tennis Center
 Scholl Canyon Park & Picnic Area (Lower)
 Sparr Heights Community Center
 Stengel Field
 Verdugo Park
 Verdugo Skate Park
 Wilson Avenue Mini Park
 Windsor Mini Park

Click [here](#) to find out which one of Glendale's beautiful parks is close to your neighborhood!

Help Reduce Waste in Glendale at Your Commercial Property



All businesses and multi-family properties of five or more units are required to recycle through their trash hauler as established by California Assembly Bill 341. Commercial restaurants and grocery stores are required to further reduce waste through organics diversion. This can be done through food donation programs or by contacting your waste hauler to begin organics recycling service. Beginning on January 1, 2022 all properties in the City of Glendale will be required to participate in organics recycling service.

Glendale Water and Power Programs

please call (818) 548-2786.

February 21 - Teen Workshop: Teen Driver Safety, 6:00 p.m. - 7:00 p.m.

*Pacific Community Center
 501 S Pacific Ave.*

Officer Vlad Akopian will present safe driving techniques for teens and positive approaches on guiding teens while driving. For more information, please call (818) 937-7247.

[Teen Driver Safety Flyer](#)

February 22 - Vote Centers Open

Various Locations

Visit GlendaleVotes.org for a full list of Vote Centers.

February 22 - Brand Associates Music Series: YuEun Kim & Sung Chang Quartet, 2:00 p.m. - 4:00 p.m.

*Brand Library & Art Center
 1601 W Mountain St.*

Enjoy music from Southern California-based musicians with significant international careers. Learn more [here](#).

February 23 - Adams Square Mini Park Gas Station: Diane Williams

*Adams Square Mini Park
 1020 E Palmer Ave.*

A collaboration of artist Diane Williams and Los Feliz Charter School for the Arts (LFCSA) students, "We Can" is the result of a social practice project with LFCAS students, ages 5-12. Sponsored by the Glendale Arts and Culture Commission with funding from the Urban Art Fund. The art exhibit runs from February 20 – March 13, 2020. The reception is on Sunday February 23, from 3:00 - 5:00 p.m. Learn more [here](#).

February 28 - Friday Night Lecture, "Birds of Prey", 6:30 p.m. - 8:30 p.m.

*Brand Studios at Brand Park and
 Library
 1601 W Mountain St.*

Back by popular demand!!! This time, the lecture will be held at Brand Studios in Brand Park. A bird of prey, predatory bird, or raptor is any of several species of bird that hunts and feeds on rodents and other animals. Join us as we learn about these birds from southern California and the adaptations that have made them

GLENDALE WATER & POWER'S⁺

CUSTOMER PROGRAMS



Glendale Water & Power has a variety of programs and services designed with the customer's best interest in mind. Whether it's providing free shade trees to plant on your property, or applying a discount to eligible low-income customers on their utility bills, GWP is there to help. [Click here](#) to see the list of programs and services available to GWP customers.

Christmas Tree Recycling Update by Glendale Public Works

such accomplished hunters. We will take an in-depth look at hawks, eagles, owls, kestrels, and how to spot and appreciate their beauty in our own backyard! Our lecturer, Jane Gao is a Wildlife Biologist that specializes in ornithology and animal behavior studies. This event is FREE! Seating is limited. Please RSVP by calling (818) 548-3795. [Birds of Prey Flyer](#)

Check the [City's calendar](#) and [City Library calendar](#) for changes in date, time, or location.

**Pacific Community Center
Gymnasium
Temporary Closure
February 19 - March 5, 2020**

Pacific Community Center's Gymnasium will be closed for regular programming, classes, and private rentals/reservations from February 19, 2020 through March 5, 2020. The gymnasium will be used by L.A. County as a polling station. Please contact the community center at (818) 548-4098 to see where programs have temporarily moved to during the closure dates.

**Pacific Park Pool Closed
February 24 - March 6, 2020
For Annual Maintenance**

Homework Help Now!



**Homework Help
NOW**

Online Tutoring and a Unique Suite of
Powerful Learning Tools for Patrons of All Ages

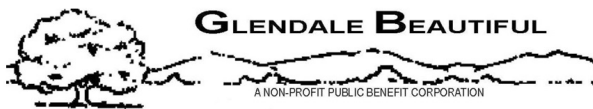
Online tutoring and powerful learning tools for all ages.

- For children, teens, and adults
- Live tutors available 7 days/week, 1:00 p.m. - 10:00 p.m.
- Tutors are subject and grade-level specialists with Bachelor degrees



Over 2,100 Christmas trees were collected by the week of January 13! The Integrated Waste Management (WM) staff brought in a chipper to help make space so they could continue clearing trees off the streets. Since the demand is extremely high, the service can take up to two weeks, so we appreciate your patience. The collection is scheduled to continue until all trees are picked up. If you have any questions about tree collection, please call the WM at (818) 548-3916.

Arbor Day 2020



Glendale Beautiful, in cooperation with the City of Glendale's Community Services and Parks Department, cordially invites you to participate in our annual observance of Arbor Day. Please join us for the 70th Arbor Day Ceremony on Tuesday, March 3 at Case Adobe DE San Rafael. The coffee social will begin at 10:00am, with a program start time of 10:30am. Join us in this community-wide effort by contributing to the purchase of a tree or by supporting trees throughout the city! For donation and other information, please visit www.glendalebeautiful.org.

In case of rain, the event will be moved to *Glendale Civic Auditorium – Lower Level – 1401 N. Verdugo Rd.*

One Glendale, After School Youth Sports Program Basketball Championship Day

- Online tutoring in English and Spanish
- 20-minute sessions, including chemistry, calculus, physics, 4th-grade math, and writing.

Learn more [here](#).

Pacific Community Pool is Open Year Round!



Pacific Community Pool is open for year-round aquatic fun! Please visit www.glendaleaquatics.com for program information, or call (818) 937-7433 to speak with pool staff.



Holiday Closures

Glendale city offices will be closed on President's Day Monday, February 17, 2020.

Glendale Libraries will also be closed on Saturday the 15th and Sunday the 16th.

See the Library, Arts & Culture holiday schedule [here](#).

Emergency Preparedness

Community Services & Parks

One Glendale

After School Youth Sports Program Basketball Season Championship Day

Friday, March 6, 2020
 Consolation game begins at 6:30 p.m.
 Championship game begins at 7:30 p.m.

Pacific Community Center
 501 S. Pacific Ave. Glendale, CA 91204

Students must be present 30 minutes prior to their game and check in with their coach. Ribbon, medal, and trophy ceremony will take place at the end of each game. Students will be dismissed after each ceremony.

BASKETBALL



Community Services & Parks invites you to the One Glendale, After School Youth Sports Program's Basketball Season Championship Day, on Friday, March 6, 2020, from 6:30 p.m. to 8:30 p.m. at Pacific Community Center, located at 501 S. Pacific Ave. Glendale, CA 91204. Hundreds of spectators are expected to attend both the consolation game and championship game and cheer for the program's participants.

The One Glendale After School Youth Sports Program is a collaboration between the City of Glendale's Community Services & Parks Department and the Glendale Unified School District, with sponsorships from USCG Verdugo Hills Hospital, Dignity Health Glendale Memorial Hospital, Glendale Water and Power, and the Glendale Parks & Open Space Foundation. Additional support is provided by the Crescenta Valley High School Choir, and the Glendale Police Department's Explorer program. One Glendale is designed to provide after school sports programming to youth in eight South Glendale schools in the fourth and fifth grades and is comprised of four sports over the course of four seasons: flag football, volleyball, basketball, and soccer. Each season lasts 8 weeks with a championship game at the conclusion of each season. For more information, please call (818) 937-7246.

Upcoming Residential Cart Replacement Project



My Glendale

**DURING AN EMERGENCY
FIND UPDATED INFO HERE**
www.glendaleca.gov
www.glendaleca.gov/EmergencyAlerts

@MyGlendale
 GTV6 (Spectrum Ch. 6, AT&T Ch. 99)

EMERGENCY NUMBERS
 Emergencies 911
 Police Department (818) 548-4911
 Fire Department (818) 956-4800
 GWP Emergency line (818) 548-2011
 Public Works Emergency line (818) 548-3950

IMPORTANT NUMBERS
 Gas Company (800) 427-2200
 Humane Society (626) 792-7151
 Red Cross - Glendale (818) 243-3121

The City of Glendale is ready for any disaster situation. However, it is important to remember that in a major disaster covering a large geographic area, assistance can take days. It is therefore important for you to prepare yourself, your family, your home, and your neighborhood. If we all stay ready, we don't have to get ready!

Here are 12 steps to take to prepare yourself and your family for an emergency:

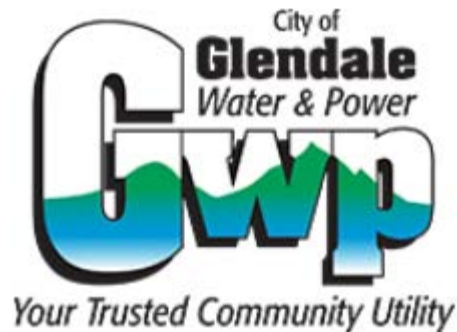
- Create a disaster communication plan
- Store enough water for family and pets for at least 7 days
- Store enough medications for family and pets for at least 30 days
- Buy an adequate first aid kit
- Store enough food for family and pets for at least 7 days
- Buy a large or small container that will contain disaster supplies
- Buy a portable radio, flashlight, and batteries for your disaster kit
- Place clothing, shoes, sanitation and hygiene supplies in your disaster kit
- Place tools in your disaster kit
- Place cash in small bills in your disaster kit
- Place copies of insurance policies and other important papers in



Be on the lookout for new garbage carts in your area. California law, SB 1383 requires all California cities to use collection containers that are easy to recognize. This means that all trash containers will include a black (or gray) top for trash, a blue top for recycling and a green top for yard trimmings (soon to become organics). When you receive your new green cart, food waste can be placed with yard trimmings for organics service. Organics materials will be processed to become a valuable soil amendment.

More detailed program information will be available at a later time.

Glendale Water and Power's Marketplace



GWP's online marketplace makes it easy to find and purchase energy and water efficient products at discounted prices. Some products available include smart thermostats like the NEST, shower heads, LED light bulbs, and more! If you're ready to make your home more energy and water efficient, look no further than the GWP Marketplace. Instant rebates are provided on all qualifying products. Visit PoweredByEFI.org/glendale

Installation of Bicycle Friendly Grates on Canada Boulevard

- disaster kit
- Annually update your disaster kit and review the plan with your family

Read more on our website by clicking [here](#).

Other Newsletters

[Community Services and Parks](#)

[Economic Development](#)

[Glendale Water & Power](#)

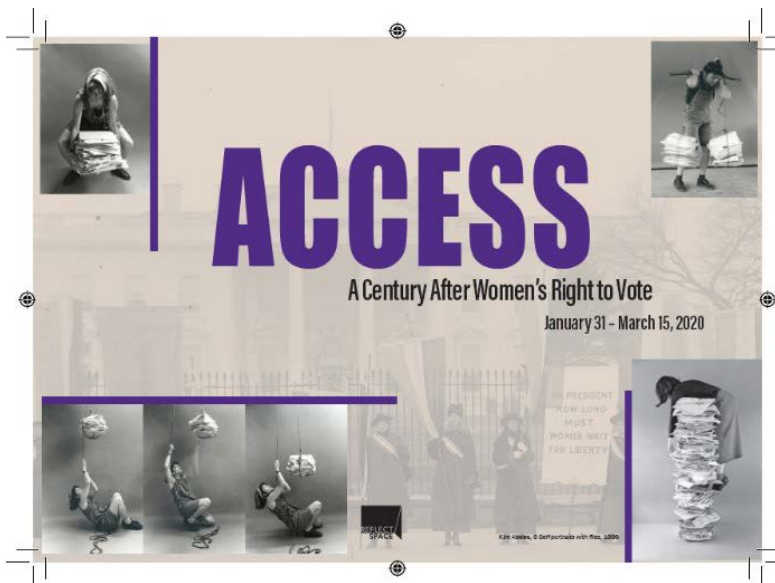
[Library, Arts & Culture](#)

[Previous City Connection Newsletters](#)



The Installation of Bicycle Friendly Grates on Storm Drain Catch Basins project is scheduled for February 2020 and is anticipated to be completed within 30 days barring unforeseen conditions. The project involves the replacement of approximately 71 catch basin roadway safety grates near or along designated bicycle facilities on Canada Boulevard and Verdugo Boulevard. Replacement grates will have openings that are designed to meet current federal and state safety standards. Work will also include the replacement of one catch basin damaged concrete structure and steel frame. The project is intended to improve public safety and promote bicycle usage as a viable form of non-motorized commuter transportation. Increased bicycle usage will reduce both traffic congestion and air pollution in Glendale.

ReflectSpace: ACCESS—Women’s Suffrage



A new exhibit at ReflectSpace Gallery looks back at the 2020 centennial milestone when women gained access to the political process through the right to vote. However, despite the passage of the 19th Amendment, women of color did not gain that right. To this day, a vast number of women are still disenfranchised and excluded from the political process. ACCESS examines the question “How much has changed in the intervening 100 years?” with art and archive, while also considering women’s roles today and their access to

positions of power. The exhibit will run from January 31 to March 15. This ReflectSpace exhibition is brought to you by the City of Glendale Library, Arts and Culture Department in partnership with the Glendale Commission on the Status of Women. Learn more [here](#).

Verdugo Mountains 10K Trail Run & Hike



Registration now open for the Verdugo Mountains 10K Trail Run & Hike! Dignity Health Glendale Memorial Hospital presents the [10th Annual Verdugo Mountains 10K Trail Run & Hike](#), produced by the City of Glendale Community Services & Parks Department to benefit the Glendale Parks & Open Space Foundation. The 10th Annual Verdugo Mountains 10K Trail Run & Hike will take place on **Sunday, May 3, 2020**. The 6.2 miles and 1,735 foot elevation gain will make for one Sunday morning you will never forget! The race begins promptly at 8:00 a.m. in beautiful Brand Park, 1601 W. Mountain St., Glendale, CA 91201.

New for 2020, all race participants will receive a finisher medal at the end of the race!

After the race, participants are invited to enjoy a free pancake breakfast. There will also be a Race Expo, offering an opportunity for local health and fitness related businesses and nonprofits to exhibit their wares.

For more information visit <https://www.runtheverdugos.com> and follow [@Verdugo10K](#) for updates.

Employment Incentive Program for Young Adults



Looking for a Job?

ENROLL TODAY!
CALL (818) 937-8073

Are you between the ages of 18 to 24 and NOT attending school?

SERVICES OFFERED:

- Paid work experience that may lead to permanent employment
- Training
- Case management
- Supportive Services, including hotel vouchers*

*Must meet program guidelines and complete necessary forms to qualify for hotel vouchers - funded by State of California HEAP (Homeless Emergency Aid Program)

GLENDALAYOUTHALLIANCE.ORG

LOCATED ON THE 2ND FLOOR OF THE VERDUGO JOBS CENTER
1255 S. CENTRAL AVENUE, GLENDALE CA 91204

The Glendale Youth Alliance is an Equal Opportunity Program. Auxiliary aids and services are available upon request to individuals with disabilities. TTY 818-548-3857

The Employment Incentive Program serves young adults ages 18-24 by placing them in private businesses to obtain the necessary skills to gain future employment. The grant pays for the initial 200 training hours as an incentive for the employer to hire the participant. Funding for this program is provided by the Workforce Innovation & Opportunity Act (WIOA).

Participants interested in the Employment Incentive Program must be:

- Between the ages of 18 and 24
- Not attending school at time of enrollment
- Live in Glendale, Burbank or La Canada Flintridge
- Be willing to work part-time, full-time and/or on weekends
- Program also has other eligibility requirements.

The main objective of the Employment Incentive Program is to secure long-term unsubsidized employment for the participants after the completion of the 200 hours of on-the-job training. Visit GlendaleYouthAlliance.org for more information.

VITA Income Tax Assistance



If you made under \$56,000 in 2019, professionally trained and certified volunteers from CSUN will prepare and electronically file your federal and state income tax returns for free. Schedule your appointment for the following dates: Tuesdays, February 4, 11, 18 & 25, 10:00 a.m. – 2:00 p.m., and Sunday, February 9, 1:00 p.m. – 5:00 p.m. Learn more [here](#).

Library Mobile App



Glendale
Library
Arts &
Culture

Use the Library, Arts & Culture mobile app to get library services in the palm of your hands, anytime, anywhere! Search for Glendale Library Arts & Culture on your device's app store. Use the app to:

- ACCESS your Library account
- SEARCH the Library catalog and reserve materials
- BOOK a room
- READ eBooks and eMagazines
- STREAM or download music and movies.

Click [here](#) for the Android App on Google Play.
Click [here](#) for the iOS App on the iOS App Store.

Bulky Item Pick Up



Did you get new furniture for New Year's and need to get rid of the old? Schedule a FREE Bulky and Electronic Item Pickup Service by calling the Integrated Waste Management Division at 818-548-3916 or by [clicking here](#) to complete the electronic form*.

Important: The items you're scheduling a pick up for must be included in our "accepted items" [list](#).

***Note:** Electronic forms must be completed **3 business days prior** to the refuse collection in your area.

19th Annual Cesar Chavez Celebration

PACIFIC COMMUNITY CENTER
501 S. Pacific Ave, Glendale, CA 91204

SATURDAY
MARCH 28
1:00 p.m. - 4:00 p.m.
2020
Program begins at 2:00 p.m.

The City Of Glendale Invites you to Celebrate the Life and Work of
CÉSAR CHAVEZ
19th Annual Celebration

FREE Tacos served from 1:15 p.m.
until food runs out

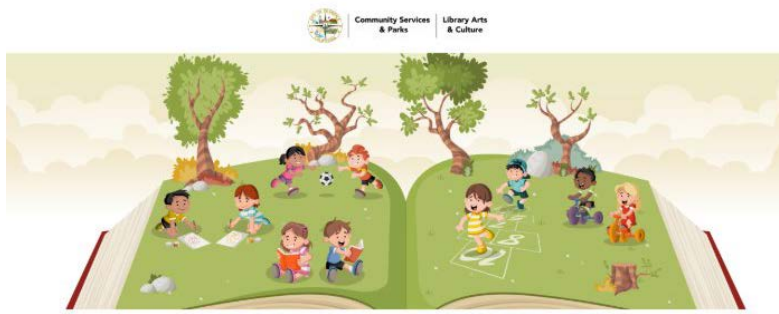
For additional information call (818) 548-4098 or visit www.glendaleca.gov [f](#) [i](#) [t](#) @MyGlendale #MyGlendale

The City of Glendale invites you to celebrate the life and work of farm worker, civil rights activist, and Presidential Medal of Freedom recipient, Cesar Chavez. The 19th annual event is on Saturday, March 28th from 1:00 p.m. to 4:00 p.m. at Pacific Park and will bring the Glendale community together to celebrate Chavez's fight against injustice through his tireless leadership and nonviolent tactics.

The fun-filled celebration will feature live performances, guest speakers, Glendale ROCKS! climbing wall, crafts for children, opportunity drawings, and free tacos while supplies last.

For more information, please call Community Services Specialist Danny Morales at (818) 937-7242.

StoryWalk® and Storytime



Storywalk with *Ms. Vivian*

Librarian Vivian Dulay conducted the StoryWalk® and Storytime program at Nibley Park on Friday, January 24. It was a beautiful morning and, by the end of the program, fifty-two people had attended. Several attendees expressed loving the StoryWalk® component and looked forward to attending the next one. The next StoryWalk® and Storytime at Nibley Park is scheduled on April 17, 2020, so mark your calendar!

StoryWalk® is an innovative and fun way of combining literacy, physical activity, and the outdoors. The pages of a picture book have been transformed into signs and placed along a designated route. There is an activity on each board for children and adults to enjoy. To begin the StoryWalk®, find story board number 1 and continue until you reach the final board.

We would love for you to share your journey through our StoryWalk® by using #myglendaleLAC and #storywalk on Instagram.

StoryWalk® is brought to you by City of Glendale's Library, Arts & Culture in collaboration with Community Services & Parks.

Composting Workshops of 2020



The Public Works Integrated Waste Management Department will be hosting three composting workshops in 2020. During the workshops you can learn how to reduce organic waste, and create a valuable soil amendment for your garden.

Dates:

February 29, 2020
June 6, 2020
October 3, 2020

Time:

9:30AM - 11:30AM

Location:

548 West Chevy Chase Drive, Glendale, CA 91204

Please keep in mind that you must register **a week before the day of the workshop.**

[*Compost and worm bins are available for purchase the day of the workshop while supplies last.](#)

For more information and to register, [click here](#) or contact recycle@glendaleca.gov

Bookmark Contest



Calling all artists in grades K-6! Design a bookmark that reflects the theme, "Imagine Your Story" through the month of February! Winning bookmarks for each grade will be printed and distributed at all Glendale Library locations. Visit any Library, Arts & Culture location or see the [website](#).

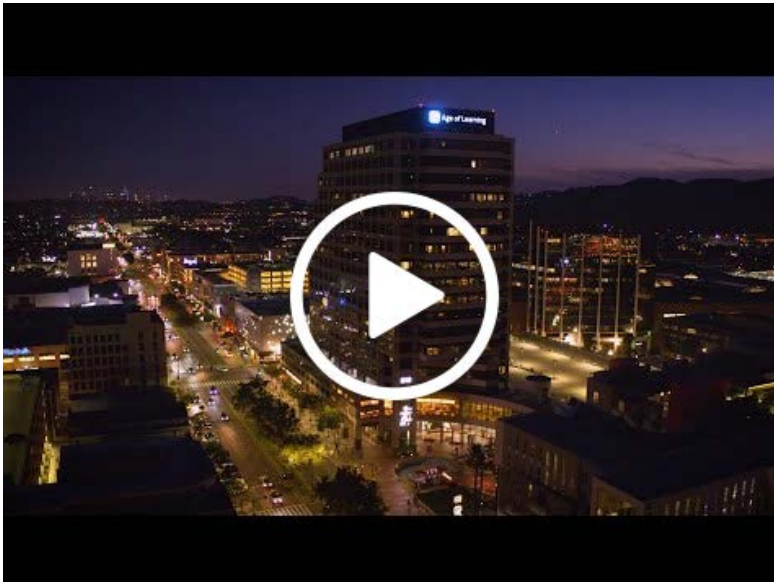
Catch us on YouTube!

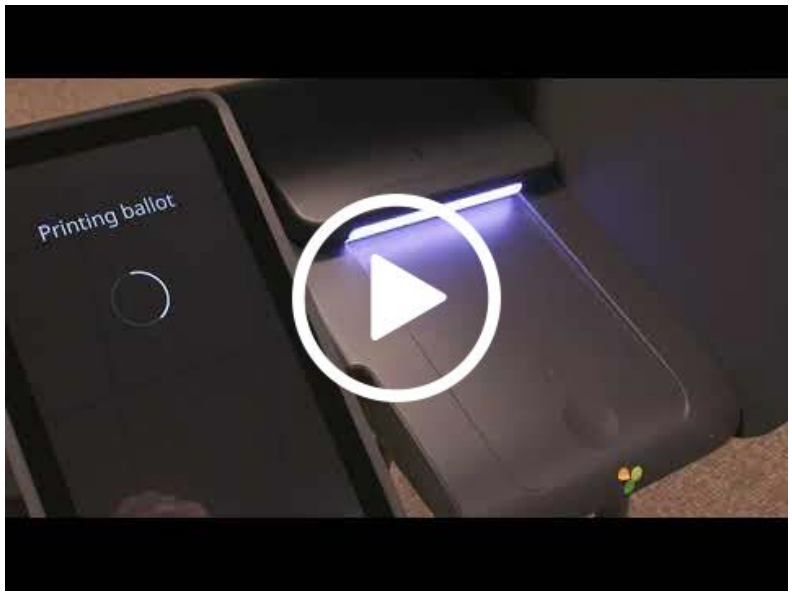


This month's episodes:

- [State of the City](#)
- [Glendale Municipal Elections](#)
- [Ballot Marking Devices](#)
- [How to Vote in LA County in 2020](#)

Be sure to tune in to Charter channel 6 or check the City's YouTube channel for new episodes every month!





Stay Connected!



This is an official publication of the City of Glendale, distributed by the Office of Communications and Community Relations. For inquiries, please contact City Connection Editor Solene Manoukian or (818) 548-4844.