



CITY CONNECTION

CONNECTING TO THE COMMUNITY

[Click here to view this message in your browser.](#)

This publication is brought to you by Mayor Ara Najarian, and City Councilmembers Paula Devine, Vartan Gharpetian, Vrej Agajanian, and Frank Quintero

July 2019

Modernizing our Grayson Power Plant



For the past few years, we have been talking about our aging Grayson Power plant that has served Glendale since the early 1940's and will soon face retirement. The retirement of the Grayson Power Plant gives GWP the opportunity to shift to new, modern, clean technologies to power our City in the future. Watch our latest [Grayson video](#) to learn about the importance of local power generation, our limited transmission capabilities, and how we are investing in a cleaner energy future to continue to provide our customers with reliable energy. [Click here](#) to view the video.

Glendale Cruise Night Returns!

City Manager's Message



Yasmin Beers

When you consider California as a whole, it's no secret that there is a lack of housing. Now, how do we effectively meet Glendale residents' need for housing that is affordable? Let me start by stating that we are keenly aware that the accessibility to housing is a major challenge at all income levels, and that Council is continuously approaching this question to increase housing opportunities in Glendale.

Despite the number of internal and external challenges in providing affordable housing options, the Glendale City Council and Housing Authority have adopted an affordable housing strategy containing specific action items to promote the development of more affordable housing across all segments of



Glendale Cruise Night returns for its 26th year Saturday, July 20 on Brand Boulevard from 5:30 p.m. – 10:30 p.m.

This free event is one of Southern California's largest car shows with a display of approximately 300-400 pre-1985 cars. Keeping with Cruise Night tradition, host and radio legend Brian Beirne, also known as Mr. Rock N'Roll, of KRTH 101 will be the master of ceremonies.

Live performances take place at the intersection of Brand Boulevard and Milford Street and include Desperado - Premier Eagles Tribute, Mirage - Visions of Fleetwood Mac, and Heartbeat City - Tribute to the Cars.

The fireworks spectacular will occur near the main stage at 10:30 p.m. Visit www.GlendaleCruiseNight.com or watch [this promotional video](#) for more information.

Cruise Night Beer & Wine Garden



The first ever Cruise Night beer and wine garden has arrived at the Alex Theatre Courtyard on Brand Boulevard. [Cruise Night](#) attendees are encouraged to make a pit-stop at the garden at any time during Glendale's renowned car show to support the nonprofit [Glendale Youth Alliance \(GYA\)](#). All proceeds will support the GYA, which provides training and employment to hundreds of at-risk youth in the Verdugo region each year.

Summertime, and the livin's easy

the community. The strategy is summarized into three broad affordable housing categories — Legislative Platform, Dedicated Revenue, and Land Use Tools. These categories are interrelated and, when working collectively, can best result in corresponding actions that help address affordable housing needs. Since adoption, the City Council/Housing Authority and staff have been working on advancing these concepts and/or taking action on the various strategies identified.

In just the last year, the Glendale Housing Authority has acquired land for new housing development, adopted a [Rental Rights Program](#), adopted a [Monthly Housing Subsidy Program](#), awarded Section 8 funding for a new Mainstream Voucher Program, [supported three housing bills at the State level that are at the halfway mark and proceeding](#), and adopted an [Inclusionary Zoning Ordinance and Commercial Development Impact Fee](#). I encourage all to click on the links provided to learn more about each of these actions.

The Glendale Housing Authority, since its inception in 1975, has invested over \$100 million in funds to develop over 1,200 low income units. There are currently two new low income projects under construction or in development. The Habitat Lomita project consisting of 6 ownership units and the Vista Grande Court 66-unit senior rental development will increase the affordable housing supply by adding a total of 72 new units to the Glendale market. These additional investments round up to over \$10 million in affordable housing funds. With the number of affordable housing units created in combination with Section 8 vouchers serviced annually, the Glendale Housing authority can claim nearly 4,450 units that serve lower income residents in Glendale.

There are also other possible



Pacific Pool is Open!

The Pacific Community Pool is open for the summer! Lifeguards are on duty to provide swimming lessons, recreation swim, swim team, water polo, and a fun time!

Please visit www.glendaleaquatics.com for program information, or call (818) 937-7433 to speak with pool staff.

Upcoming Events:

Dive-In Movie: Moana

Vartavar Water Celebration

Credits & Refunds to Qualifying GWP Water Customers



In May 2019, the Glendale City Council authorized a settlement to resolve two lawsuits involving the City's water rates adopted in 2014. In December 2018, the California Court of Appeal found that the City's water rates complied with Proposition 218 on 3 of the 4 issues contested in the appeal, and the settlement agreement resolves this remaining issue, as well as another issue that was not appealed. Under the settlement, the City will provide credits on the water utility bills for existing Single Family Residential and Multi Family Residential water customers who used water in the highest tiers (Tier 4 for Single Family and Tier 2 for Multi Family) from October 20, 2016 – June 30, 2018. The amount of the credit will be \$0.52/Hundred Cubic Feet (HCF) for Single Family customers who used water in Tier 4 and \$0.05/HCF for Multi Family customers who used water in Tier 2 for the stated period. For those who used water in these highest tiers

property acquisitions that the City Council will consider soon. This could mean hundreds of new affordable units we will be able to build in the near future.

What is important to remember in this progression is that there is no simple solution to this issue and that it is more complicated than a single answer capable of satisfying everyone. In other words, there's more to consider than just rent. A variety of forces have played a role in this statewide crisis, and it will take a variety of forces to alleviate it.

As you can see, we spend a great deal of time and effort on this issue and are continuously seeking opportunities to develop new affordable renter and ownership housing, and the preservation and renovation of existing renter housing. To say that Glendale is different or is not doing anything is incorrect.

That said, the Glendale City Council and Housing Authority will continue to work relentlessly to satisfy the growing need for affordable housing in the City of Glendale.

For more information on any of these housing programs, contact the City's Housing Division at (818) 548-3936.

Summer Concerts in the Park

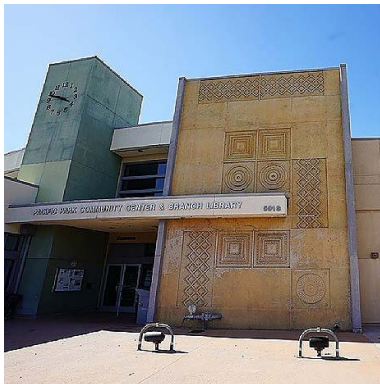


Where: Verdugo Park
When: July 10 - August 14 (Wednesdays)
6:30 p.m. - 8:30 p.m.

during the stated period, but are no longer GWP customers, the City will make refunds available.

Existing GWP water customers who qualify for the credits do not need to do anything to receive the credit on their utility bill. Credits will be applied to utility bills beginning August 1, 2019. Former customers who no longer have an active GWP water account but used water in the highest tiers during the stated period as described above may receive a refund for the amount of the credit. If you think you are eligible for a refund, you can get more information [here](#).

Service Changes at Library, Arts & Culture



Beginning July 1, 2019, and in keeping with leading library practices, fines for children's and teen materials have been eliminated at all Library, Arts & Culture locations. Over the last ten years, libraries across the U.S. have been eliminating fines for children's and teen materials as it has often functioned as a barrier to children's and teen literacy. Children, teens, and parents will still be expected to bring their library materials back in a timely manner and will be charged replacement costs for the items that are not returned.

In addition, service hours at four library locations have changed. For more information, see the Library, Arts & Culture website www.GlendaleLAC.org. The new service hours will be as follows:

Casa Verdugo Library

Monday – Thursday, 11 a.m. - 8 p.m.; Friday, 1 p.m. - 6 p.m.; Saturday and Sunday, closed

Library Connection @ Adams Square

Monday – Thursday, 11 a.m. - 7 p.m.; Friday – Sunday, closed

Montrose Library

Monday – Thursday, 11 a.m. - 7 p.m.; Saturday, 12 p.m. - 5 p.m.; Friday and Sunday, closed

Pacific Park Library

Monday – Wednesday, 2 p.m. - 8 p.m.; Thursday, 10 a.m. - 6 p.m.; Saturday, 10 a.m. - 5 p.m.; Friday and Sunday, closed

The City of Glendale is proud to announce the return of our annual Summer Concerts in the Park! Our six-week free concert series will be filled with amazing performances from a variety of bands that will be sure to bring you an evening of fun and excitement! Bring a blanket and your dancing shoes, and enjoy an evening picnic dinner with your family, listening and dancing to the music and beats of our talented bands!

Summer School Help is Here



Online tutoring and powerful learning tools for all ages.

- For children, teens, and adults
- Live tutors available 7 days/week, 1:00 p.m. - 10:00 p.m.
- Tutors are subject and grade-level specialists with Bachelor degrees
- Online tutoring in English and Spanish
- 20-minute sessions, including chemistry, calculus, physics, 4th-grade math, and writing.

Learn more [here](#).

MakerSpace, SoundSpace, and Career Workshops



Where: Downtown Central Library, 222 East Harvard St.

Enjoy free craft-making workshops, learn about music production, or delve into in-demand occupations in the

Neighborhood libraries expanded their service hours in 2015 during the two-year renovation of Downtown Central Library to maintain service to the community. Since its reopening in 2017, Downtown Central Library has offered service seven days per week for a weekly total of 72 hours.

On July 1, 2019, the four Library, Arts & Culture locations above will collectively reduce their operating hours by 18 hours to re-balance operating hours following the reopening of Downtown Central Library. All Library, Arts & Culture locations will collectively operate a total of 296.5 hours per week, 18.5 hours more than before the renovation of Downtown Central Library.

RIISE Project

Regional Immediate Intervention Service for Employment



The RIISE grant creates the Regional Immediate Intervention Service to Employment (RIISE) project which brings together several community partners to train and prepare participants for full-time employment. RIISE will target individuals that are homeless and are either foster youth, victims of domestic violence, have disabilities, or are receiving government assistance. The City of Glendale's Continuum of Care, in partnership with Ascencia and other community organizations, will identify and refer candidates to the program. The Verdugo Jobs Center (VJC) will provide counseling and career guidance, as well as work readiness workshops to prepare participants for job search. Work readiness also includes training in communication skills, interpersonal skills, conflict resolution, and other skills needed to be successful in the work environment. The City of Glendale's Community Services & Parks Department will provide temporary paid work experience to qualify for future jobs while earning wages. Individuals will be supervised while working at park sites conducting general park maintenance. The VJC will provide job placement assistance and supportive services, including interview and work clothing, and transportation assistance to secure employment.

For more information please contact Rasheedah Scott, Case Manager at (818) 937-8011.

[CLICK HERE](#) to view the flyer.

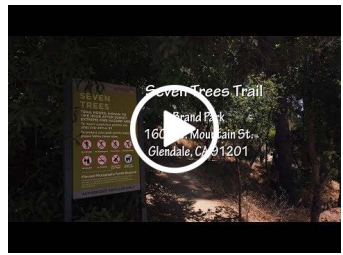
City Continues Installation of Pedestrian Safety Features



City of Glendale Public Works Engineering recently completed installing new curb ramps and reconstructing existing substandard curb ramps to meet federal ADA guideline requirements. Improvements included the repair of uplifted or

Glendale region. Learn more about free monthly workshops and register [here](#).

Trails & Open Space Events



[Riverwalk Workday](#)
[Wilderness Workday](#)
[Campfire Program](#)

All Trails and Open Space programs are sponsored by the [Glendale Parks & Open Space Foundation](#).

To be notified about all Trails and Open Space Program events, and ensure that you don't miss out on events similar to these in the future, [CLICK HERE](#).

Calendar

Fridays in July – Brand Library Plaza Series Showcases Eclectic Music, 7:00 p.m.
Brand Library & Art Center
1601 West Mountain Street
Klezmer, jazz, salsa and New Orleans style funk are featured in July at the Brand Library Plaza Series. The free music performance is supported by the City of Glendale and the Glendale Arts and Culture Commission with funding from the Urban Art Program and the Brand Associates. The 2019 Plaza Series continues every Friday evening through August. Learn more [here](#).

Every Other Friday - Teen Night Out, 5:00 p.m. - 9:00 p.m.
Pacific Community Center
501 South Pacific Avenue
Glendale Teen Night Out is designed to provide FREE teen activities that include billiards, ping pong, karaoke, PS4, and teen coordinated activities. Snacks and refreshments will be served. Please call (818) 937-7240 with any questions. Learn more [here](#).

broken sidewalks, damaged curbs, gutters, and driveways. The installation of new curb ramps now provides uninterrupted access for persons with disabilities within the project limits. Overgrown or dying trees in the parkway were removed and replaced with 24-inch box trees selected by the City's Urban Forester. The project was part of the City's annual American with Disabilities Act Curb Ramp Installation and Sidewalk Repair Program. Two flashing beacon systems at two pedestrian crossings at Central and Fairview Avenue and Brand and West Glenoaks Boulevard were also upgraded to improve pedestrian safety.

Learn more about Glendale Public Works projects by clicking [here](#).

Own the Night, Own Your Community



National Night Out is back!

Join City Council members, Glendale Police Officers, Firefighters, and City officials on **Tuesday, August 6th** to take a stand against crime, drugs, and disorder at one of several NNO neighborhood events around Glendale.

National Night Out is an annual community-building campaign celebrated throughout the country. Neighborhoods across the nation host bock parties, festivals, parades, cookouts and other community events to promote police-community partnerships and neighborhood camaraderie to make our neighborhoods a safer and better place to live.

To learn more about National Night Out, visit GlendaleNNO.com or call the GPD Community Impact Team at (818) 548-4015 or (818) 548-4016.

Glendale Streetcar



The City of Glendale is engaged in a streetcar feasibility study that would seek to connect the Larry Zarian Transportation Center with the vibrant heart of the Downtown. A modern streetcar line would establish a connection between its

Through August 23 - Blind Courier: 9 Los Angeles Artists and Their Notion of Place

Brand Library & Art Center
1601 West Mountain Street

Curated by Hilary Baker and Lauren Kasmer, Blind Courier takes the idea of the city as a passive entity and turns it on its head, offering a compelling mix of work that reveals their relationship to a place. The exhibition will also feature Food & Art in Brand Park and an Exhibition Tour with art critic Shana Nys Dambrot. Learn more [here](#).

July 12 – 1 in 3 Exhibit Opening Reception, 7:00 p.m. – 9:00 p.m.

Downtown Central Library Auditorium
222 East Harvard Street

1 in 3 at ReflectSpace Gallery at the Downtown Central Library addresses global violence with an international cast of artists from South Korea and the US. 1 in 3 women in the world have experienced sexual violence during their lifetime. Nearly 1 in 5 women and 1 in 33 men have experienced completed or attempted rape. Every 92 seconds, an American is sexually assaulted. Headlined by a massive 23-foot mural by Leslie Starus, **1 in 3** considers the historical sweep of this violence with works and performance addressing the Asian Comfort Women of WWII, the anti-sexual violence efforts of the 1970s, and the current #metoo movement. Learn more [here](#).

July 13 – Genealogy 101, 9:00 a.m. – 11:00 a.m.

Downtown Central Library TechSpace Computer Lab
222 East Harvard Street

Learn how to use Ancestry Library Edition, the world's most popular consumer online genealogy resource. Answers await everyone—whether professional or hobbyist, expert or novice, genealogist or historian—inside the more than 7,000 available databases. Here, you can unlock the story of you with sources like censuses, vital records, immigration records, family histories, military records, court and legal documents, directories, photos, maps, and more. Ancestry Library Edition is only available in-Library.

centers of entertainment, dining, shopping, and residents along the Brand Boulevard and Central Avenue corridors. With connections to Beeline bus service, Metro bus lines, and rail service at the Larry Zarian Transportation Center, the streetcar has the potential to attract visitors and tourists, in addition to creating an improved transit connection for those that live and work in Glendale.

Learn more at GlendaleStreetcar.com

Wildfire Preparedness



Catch us on Youtube!



This month's episodes:

- [Providing Reliable Power](#)
- [National Night Out Promo 2019](#)
- [Seven Trees Trail Hike](#)
- [Frozen Treats in Glendale](#)
- [Backyard Summer Safety](#)
- [Bulky Item Pickup](#)
- [Cruise Night 2019 Car Owner Promo](#)

Be sure to tune in to Charter channel 6 or check the City's YouTube channel for new episodes every month!

Time-Of-Use Rates

Learn more [here](#).

July 13 – 222 EAST Live Music & Book Sale, 11:00 a.m. – 3:00 p.m.

*Central Park Paseo next to Downtown Central Library
222 East Harvard Street*

Enjoy the piano, violin and percussion music of Trio SynThesis. Formed in 2015, the passionate and soulful group breathes life into newly created works through their own unique interpretations. The free music performance is supported by the City of Glendale and the Glendale Arts and Culture Commission with funding from the Urban Art Program. Visitors can also enjoy a used book sale sponsored by the Friends of the Library. Learn more [here](#).

July 14 – Lettres d'un Ami / Letters to a Friend, 2:00 p.m. – 3:30 p.m.

*Downtown Central Library Auditorium
222 East Harvard Street*

Afternoon poetry reading event featuring the poetry of former Library staff member, William Shane Benson (1965-2004), as well as the poetry of local authors, Bill Cushing, Glora Enedina Alvar, Tina Demirdjian, and Zelman Lara-Salas. Teens can earn community service time. Learn more [here](#).

July 19 – TEENS--A Mid-Summer Night @ the Library, 6:30 p.m. – 8:00 p.m.

*Downtown Central Library
222 East Harvard Street*

Life-sized games, as well as activities using the five senses to de-stress and exercise self-expression. Learn more [here](#).

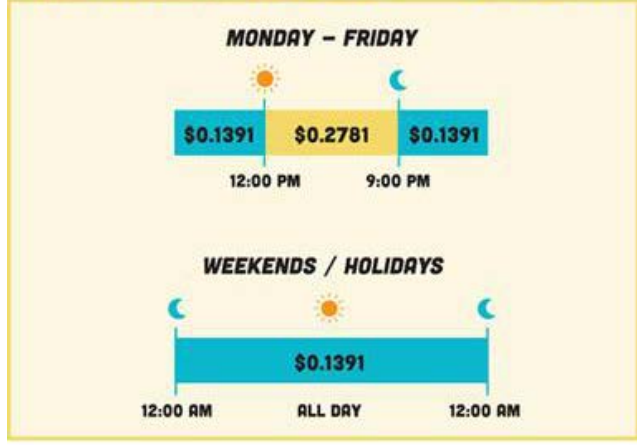
July 20 – Brand Associates Docent Tour – 9:30 a.m. – 10:30 a.m.

*Brand Library & Art Center
1601 West Mountain Street*

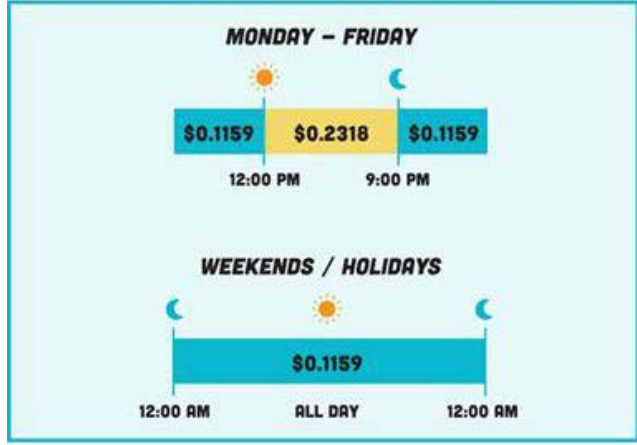
Brand Associates member and experienced docent Jackie Davis, will share the fascinating story of the Brand Family and Miradero the historic family home that is now Brand Library. Learn more [here](#).

July 27 – Comfort Women Commemoration Day, 1:00 p.m. – 9:00 p.m.

HIGH SEASON JULY – OCTOBER



LOW SEASON NOVEMBER – JUNE



DAILY CUSTOMER CHARGE IS \$0.82 PER DAY
 * Price per kWh

GWP gives customers the choice to opt into Time-Of-Use (TOU) rates. TOU rates differ from regular electric rates by offering a different rate per kilowatt hour (kWh) depending on the time of day. These periods are referred to as peak and base periods, where electricity is more expensive during the peak period and less expensive during the base period.

Beginning July 1st, GWP's TOU rates will have a peak period from Noon - 9:00 p.m. and a base period from 9:00 p.m - Noon on weekdays, and a base period the entire day on weekends and holidays.

Although the Daily Customer Charge for customers on a TOU rate is \$0.82 compared to the \$0.44 for the standard rates, customers can potentially see substantial savings if they shift most of their electricity use to the base period. Customers that can benefit from TOU rates include those with electric vehicles that are charged overnight, those that can wait to run major appliances during the base period, or those that are not home during the peak period.

The chart above shows the TOU rates effective July 1. To see a bigger chart and a comparison to our standard rate please click [here](#).

Do you think TOU rates could benefit you? Contact our Customer Service Department at 855-550-4497 or at GWPCustomerService@GlendaleCA.gov for a rate comparison to see if switching to TOU rates makes sense for you.

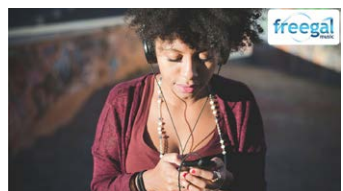
Veteran's Employment Assistance Program

[Downtown Central Library Auditorium](#)
 222 East Harvard Street

The day's events include a Seminar, 1:00 p.m. – 4:00 p.m., cultural programming, 5:00 p.m. – 7:00 p.m., and a performance by artist Han Ho, 7:00 p.m. Learn more [here](#).

Check the [City's calendar](#) and [City Library calendar](#) for changes in date, time, or location.

Freegal Music



Enjoy this free music service from Library, Arts & Culture. Access to 15 million+ songs, including Sony Music's catalog of legendary artists. 24/7 streaming and 3 downloads per week that you get to keep. There is no software to download, and there are no digital rights management (DRM) restrictions.

Sign in with your library card [here](#).

Free Lunch for Children this Summer



Weekdays through August 9

Downtown Central Library,
 11:30 a.m. – 12:30 p.m.

Grandview Library, 12:00 p.m. – 1:00 p.m.

Children under 18 years of age can enjoy a free hot lunch at the

Veterans' Employment Assistance Program

The Verdugo Jobs Center is honored to assist our Veterans by providing:

Career Counseling

Job Placement

Classroom Training and much more!

Call (818) 937-8039

Veteran Representative Thomas Flynn



Come to Verdugo Jobs Center at 1255 S. Central Ave. Glendale, CA 91204

The Verdugo Jobs Center is proud to provide the Veteran's Employment Assistance Program, which is a program that provides free vocational training and job placement services to our honored Veteran community.

Space is limited; all interested are encouraged to contact Thomas Flynn at (818) 937-8039.

[CLICK HERE](#) to view the flyer.

Pitchfest 2019



Applications are now available for those interested in participating in Pitchfest 2019. One of Glendale Tech Week's most popular events, Pitchfest brings together extraordinary startups, VCs, angel investors, notable CEOs and keynote speakers together under one roof. Companies selected to compete in Pitchfest will compete for a grand prize in front of a live audience, angel investors, and VC judges on Thursday, September 19, 2019. [Apply Now!](#)

4 Ways to Get Involved with Glendale Tech Week



WANTED: Tech Demos

Showcase your cutting edge products in front of a diverse audience of over 10,000 people. We're looking for the latest innovations in VR, AR, AI, wearable tech, smart home tech, robotics, gadgets, gaming, health tech and beyond. [Apply Now.](#)

Host Your Own Event:

Raise your company's profile in the tech community by hosting a pop-up event.

Downtown Central Library and the Grandview Library, Monday – Friday, through August 9, through a special partnership with Glendale Unified School District. There are also great Summer Reading Program family events in July, including:

- Magic with Abbit the Average
- Noteworthy Puppets
- Christopher T. Magician
- Bubblemania
- Kids Imagine Nation
- Kreepy Kreatures Reptile Show

Learn more [here](#).

@MyGlendaleTeens Photo Contest



Teens ages 13-18 are eligible to participate in the Youth and Family Services Teen Photo Contest. Teens will have two (2) categories to compete in:

- 1.) I can only find this in Glendale #tpc19Glendale
- 2.) I consider this beautiful #tpc19Beautiful

Instagram tag [@MyGlendaleTeens](#) and hashtag a category. If you don't have Instagram, please e-mail jbaliton@glendaleca.gov for information on how to send photos for consideration. Winners of a trip to Speedzone in Los Angeles will be announced at National Night Out on Tuesday, August 6, 2019 at [Pacific Community Center](#).

Photo submissions will be accepted through July 19, 2019.

Tech News

You can be a featured speaker; inspire others & share your expertise on a variety of hot topics. Host a happy hour or mixer. The possibilities are endless. [Be a host.](#)

Call for Funders:

Calling all VC funders, angel investors, and traditional lenders! Join us at our most popular signature event, "Meet the Funders" for some speed networking with up and coming startups. You might discover the next big thing. [Call for funders.](#)

Compete at Pitchfest:

Sign-up to be a contestant in this popular "shark tank style" competition. Pitch your startup in front of a live audience and panel of judges. You could walk away with a prize package including thousands of dollars in services for your startup. [Sign me up.](#)

Glendale Beeline - We Want to Hear From You!



WE'RE IMPROVING!

THE CITY IS HOSTING PUBLIC WORKSHOPS TO INVITE PUBLIC INPUT ON RECOMMENDED SERVICE CHANGES TO THE GLENDALE BEELINE.

MONDAY, JULY 22 AT GLENDALE CITY HALL
613 E. BROADWAY, GLENDALE, CA 91206

4:00 PM DROP-IN OPEN HOUSE/ WORKSHOP
6:00 PM TRANSPORTATION & PARKING COMMISSION - PRESENTATION
8:00 PM DROP-IN OPEN HOUSE/WORKSHOP

GlendaleBeeline.com

In conjunction with Glendale's Transportation and Parking Commission meeting on Monday July 22, the City is hosting public workshops to invite community input on recommended service changes to the Glendale Beeline. Members of the public are welcome to participate in any or all of the meetings at Glendale City Hall, 613 E. Broadway.

Schedule:

- 4:00 pm Beeline Workshop
- 6:00 pm Transportation and Parking Commission Meeting – Transit Route Analysis presentation
- 8:00 pm Beeline Workshop

Workshops will be conducted in an open house format enabling residents and community members to talk directly with the planning team and provide input regarding specific recommended changes such as revised routes, new routes, improved service frequencies and longer operating hours, and expanded destinations served. Learn more [here.](#)

Grand Opening Ceremony of Maple Park's All-Inclusive Playground



Bay area teach company puts down roots in Glendale.

NoHo to Pasadena BRT Public Scoping Meetings



Metro invites you to any of five public scoping meetings to learn more about and to comment on the proposed project and any potential environmental issues that should be considered in the Project's Draft Environmental Impact Report.

To view the schedule or to learn more, click [here.](#)

Emergency Preparedness



My Glendale

DURING AN EMERGENCY FIND UPDATED INFO HERE

www.glendaleca.gov
www.glendaleca.gov/EmergencyAlerts

@MyGlendale
GTV6 (Spectrum Ch. 6, AT&T Ch. 99)

EMERGENCY NUMBERS

Emergencies 911
Police Department (818) 548-4911
Fire Department (818) 956-4800
GWP Emergency line (818) 548-2011
Public Works Emergency line (818) 548-3950

IMPORTANT NUMBERS

Gas Company (800) 427-2200
Humane Society (626) 792-7151
Red Cross - Glendale (818) 243-3121

The City of Glendale is ready for any disaster situation. However, it is important to remember that in a major disaster covering a large geographic area, assistance can take days. It is therefore important for you to prepare yourself, your family, your home, and your neighborhood. If we all stay ready, we don't have to get ready!

With that being said, here are 12



The playground at Maple Park has been replaced with an all-inclusive, Shane's Inspiration playground and is now open to the public. Join us for the grand opening ceremony scheduled for Saturday, August 17, 2019, at 10:00 a.m.; the program will begin at 10:30 a.m.

Should you have any questions, please call (818) 548-2000.

[CLICK HERE](#) to view the invitation.

Employment Opportunities for Students with Disabilities



The Glendale Youth Alliance (GYA) is excited to announce that it has once again received funding to operate the STEPS 2019 Summer Training and Employment Program for Students with disabilities! GYA is now accepting applications. Youth will receive work readiness training and 200 hours of paid work experience at a worksite based on their skills, aptitudes and interests during the summer months.

Youth Eligibility:

- Must be between the ages of 16-21
- Must have a disability and be able to work independently in mainstream employment
- Must have right to work documents
- If under 18, must be able to obtain a work permit from school

Most jobs are in the cities of Glendale, Burbank and surrounding areas; therefore, youth must have transportation to work.

Applications are available at the GYA office, located at 1255 S. Central Avenue, Glendale, CA 91204.

For more information, call (818) 937-8073.

[CLICK HERE](#) to view the flyer.

Parking Enforcement

steps to take to prepare yourself and your family for an emergency:

- Create a disaster communication plan
- Store enough water for family and pets for at least 7 days
- Store enough medications for family and pets for at least 30 days
- Buy an adequate first aid kit
- Store enough food for family and pets for at least 7 days
- Buy a large or small container that will contain disaster supplies
- Buy a portable radio, flashlight, and batteries for your disaster kit
- Place clothing, shoes, sanitation and hygiene supplies in your disaster kit
- Place tools in your disaster kit
- Place cash in small bills in your disaster kit
- Place copies of insurance policies and other important papers in disaster kit
- Annually update your disaster kit and review the plan with your family

Read more on our website by clicking [here](#).

Other Newsletters

[Community Services and Parks](#)

[Economic Development](#)

[Glendale Water & Power](#)

[Library, Arts & Culture](#)

[Previous City Connection Newsletters](#)



In an effort to ensure compliance with parking rules and regulations around the City of Glendale, we have brought on an additional parking enforcement provider. While the white Priuses may look different than our existing fleet of Jeeps, our mission remains the same. Our goal is to efficiently respond to calls for service and effectively enforce parking laws and regulations. This provides for the safe and efficient flow of traffic and parking that our citizens and visitors expect from the City of Glendale.

Stay Connected!



This is an official publication of the City of Glendale, distributed by the Office of Communications and Community Relations. For inquiries, please contact City Connection Editor Eliza Papazian or (818) 548-4844.