



## CITY CONNECTION

CONNECTING TO THE COMMUNITY



June 2020

[Click here to view this message in your browser.](#)

This publication is brought to you by Mayor Vrej Agajanian, and City Councilmembers Ara Najarian, Paula Devine, Ardy Kassakhian, and Daniel Brotman

### City Manager's Message



Yasmin Beers

As we ease into June, I keep my fingers crossed and hope we can soon start reconnecting with the people and activities that we love. It seems impossible that we've been in a stay at home mode since late March. I know this has been and continues to be a very stressful time, especially in light of the recent events that have impacted us both nationally and locally. We are devastated by these events throughout Los Angeles County and across the country.

I know that this period of uncertainty has been tough on our community. I'd like to take a moment to say that the City of Glendale does not condone violence, hatred, and racism. We celebrate the diversity in our City and embrace a culture of inclusivity. Thank you to all of you for showing everyday acts of kindness, togetherness, and staying strong in a time of adversity.

Today we also owe a special thanks to the Glendale Police Department whose top priority remains the personal safety of everyone in our community, while fully supporting the people's right to protest and expression. They have worked non-stop to maintain calm and safety in Glendale.

The loss of Mr. George Floyd's life is a tragedy and I share in the heartache, grief, and frustration from this incident. Glendale's commitment to inclusiveness, compassion, and mutual respect is the foundation for continuing to build upon a community where future generations will never have to experience such injustices.

I'd like to leave you all with a statement released by Glendale Police Chief, Carl Povilaitis regarding the recent events that have impacted us both nationally and locally.

*Any loss of life is tragic, and our thoughts and prayers are with the friends and family of Mr. George Floyd. We share the pain and frustration stemming from this incident.*

*It is every police department's responsibility to protect the lives of the community we are sworn to serve and to honor the principles of democracy upon which this country was founded. The Glendale Police Department recognizes and respects the value of all human life and dignity without prejudice to anyone.*

*As the Chief of Police, it is my responsibility to shape and guide the department well before a potentially "critical" incident occurs. The men and*

women of the Glendale Police Department are committed to continually learning and adapting to provide the highest level of service to our community. The actions during the arrest in Minneapolis are not consistent with the Glendale Police Department's training, expectations, and culture.

We do not take for granted the trust and support of our community; maintaining that trust is something that we work towards each and every day. It has always been and will be the mission of the entire department to protect all people of Glendale. Regardless of the situation, we will continue to enhance relationships in our community and perform our critical functions.



## FEATURED ARTICLES

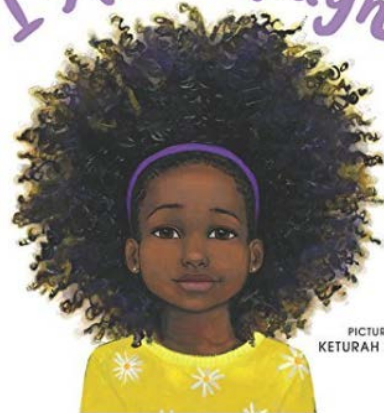
### Black Lives, Black Stories

Glendale's Library, Arts, & Culture Department strives--both in this moment of unrest, and going forward--to offer quality resources for all ages as we have always done, but with a thoughtful intent to amplify more Black stories, and the stories of other under-represented communities, to promote equality, awareness, and inclusion, and to support those looking to start difficult but necessary conversations.

At their best, books can serve as mirrors, reflecting and affirming our identities and experiences, as well as windows, building empathy with people, cultures, and experiences outside of our own. We've developed [booklists](#) for both children and adults that offer a starting place for hard but important conversations and action.

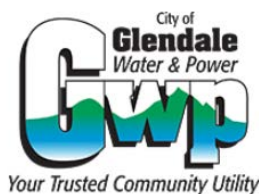
GRACE BYERS

*I Am Enough*



PICTURES BY  
KETURAH A. BOBO

### Upcoming Power Outages



Providing safe and reliable power to customers is GWP's top priority. In order to continue to do so, GWP must perform necessary upgrades on their electrical infrastructure. These critical upgrades will require short, scheduled power outages to some customers so that GWP crews can safely replace and upgrade overhead and underground transformers and ensure that customer loads are balanced on their distribution system. We understand that these are difficult times and we sincerely apologize for any inconvenience that these scheduled outages may cause.

Customers affected by these outages will be notified in advance and outage

updates will be posted on GWP's social media channels on [Facebook](#), [Twitter](#), and [Instagram](#).

[Click here](#) for FAQs and to learn more about these upcoming outages.



Glendale is starting a Slow Streets Program to remind motorists to slow down for pedestrians and cyclists on local residential streets. Signs will be installed recognizing streets where pedestrian and cyclists are sharing the right-of-way to encourage a safer and slower environment for all modes of transportation. Glendale residents may petition to have their block designated a "slow street". Click [here](#) to learn more or to fill out a petition!

## GCC Announces Remote Learning for Fall Semester

Glendale Community College's successful transition to remote learning during the COVID-19 pandemic will continue through the fall semester. GCC faculty and staff swiftly moved the spring semester to a remote learning model in March when the Verdugo and Garfield campuses closed due to coronavirus. Classes continued to meet online at their scheduled times.

Open registration begins June 1 for the fall semester with the first day of credit classes scheduled for August 31. Students interested in taking classes this fall can [click here](#) for more information.

GCC continues to serve students as they pursue their educational goals. Check out this [video](#) to see how the campus community is thriving. For more information regarding continuing education (noncredit) classes at the GCC Garfield Campus [click here](#). Stable, Adaptable, Affordable. GCC is Ready and Able.



## Cooling Fan Assistance Program

On Monday, May 4, 2020 The City of Glendale, Community Services & Parks Department launched the

# Cooling Fan Assistance Program



Cooling Fan Assistance Program to assist low-income seniors in Glendale in beating the heat while County- and City-issued "Safer At Home" Orders are in place.

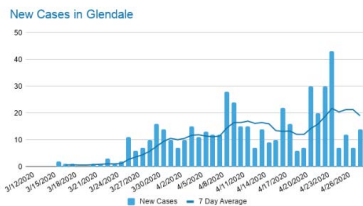
The program provides one free fan to seniors 60 years of age and older who reside in Glendale, Montrose, Verdugo City and La Crescenta; meet income requirements; have a valid government issued photo ID; and do not have any form of cooling unit in their household.

Seniors can apply for the fan by completing an application online at [www.glendaleca.gov/cspcares](http://www.glendaleca.gov/cspcares), by mailing their application to the Adult Recreation Center at 201 E. Colorado St. Glendale, CA 91205, or by calling (818) 548-3775.

Seniors who meet the eligibility requirements will have their cooling fans delivered to them by a staff member of the Community Services & Parks Department.

Please visit [www.glendaleca.gov/cspcares](http://www.glendaleca.gov/cspcares) for more information.

# CONFRONTING COVID-19 UPDATES



## COVID-19 Dashboards

The City of Glendale has developed two dashboards related to COVID-19. The [COVID-19 Dashboard](#) is updated daily with the number of current positive cases and deaths within the City of Glendale and County of Los Angeles.

The [COVID-19 Financial Dashboard](#) outlines how General Fund revenues for the current fiscal year have been impacted due to the pandemic.

## Now Open In Glendale

**GLENDALE ROAD TO RECOVERY:**  
Businesses that are allowed to reopen

- Florists
- Car washes
- Car dealerships
- Faith-based organizations
- Manufacturing and logistics sector businesses that supply low-risk businesses
- Grocery Stores, certified farmers' markets, farm and produce stands, supermarkets, food banks, convenience stores, wholesale clubs, and pharmacies
- Pet food stores, animal daycare and boarding facilities, and veterinary clinics
- Stores that sell products needed for your home, such as hardware, building, home appliance, and pool supply stores
- Retailers
- Indoor malls and shopping centers
- Restaurants and cafes: open for dine-in, pick-up, drive-thru, and delivery
- Pet grooming
- Clinics, hospitals, dental clinics, physical therapy and chiropractic offices, optometrists, mental or behavioral health providers, and other healthcare settings
- Golf courses
- Trails
- Parks (not including picnic amenities, playgrounds and exercise equipment)
- Tennis courts
- Pickle ball courts
- Community gardens
- Esquection area at Riverwalk
- Vehicle-based parades
- Drive-in movie theaters and drive-in restaurants
- Pools in multi-unit residential facilities (e.g., apartments, condominiums, and homeowner's associations)
- Childcare facilities
- Barbershops
- Hair Salons

May 26, 2020

The City of Glendale has begun taking steps to reopen our bustling city during the COVID-19 pandemic. In May, trails and trailheads, pickleball and tennis courts, pet grooming, salons, barber shops, dine-in restaurants, and more were given the green light to resume business, while adhering to infection control and physical distancing guidelines. Visit [Glendaleca.gov/Recovery](http://Glendaleca.gov/Recovery) for a comprehensive list of businesses that may reopen at this time.

All businesses, visitors, and those participating in activities must adhere to distancing and infection control protocols:

- Maintain 6ft physical distancing at all times
- Wear a face covering at all times
- No group gatherings allowed
- Bring your own equipment to court facilities

**COVID-19**  
**SOCIAL DISTANCING**

|-----|

Keep 6 feet between you and other people

Do not enter if you are experiencing symptoms of respiratory illness, including fever or cough.

To view all of the Emergency Orders or for Frequently Asked Questions, visit [Glendaleca.gov](http://Glendaleca.gov).

**FACE COVERING**

Face coverings are now REQUIRED anytime you leave your home.

This includes:

- Going on a walk
- Picking up essential goods
- Walking your pet

**What is a face covering?**

A face covering is not the same thing as a mask. A face covering is a material that covers the nose and mouth. It can be secured to the head with ties or straps or simply draped around the lower face. It can be made of cotton, silk, or linen. A cloth face covering may be factory-made or sewn by hand, or can be improvised from household items such as scarves, t-shirts, towels, or bandanas. [Glendaleca.gov](http://Glendaleca.gov)

## Business Resources

Prior to reopening, businesses must prepare, implement, and post the required Los Angeles County Department of Public Health Reopening Protocols, applicable to the business type or location. Click [here](#) to view and download the protocols.

The City of Glendale has also created various signs that businesses can use on their storefront. The "Social Distancing" sign below may be picked up in the Police Department Lobby (131 N. Isabel St., Glendale, CA 91206), while supplies last, or accessed by clicking the image below.

Additional marketing resources are available [here](#).



## Glendale Fire Department Household Hazardous Waste Program

The Household Hazardous Waste (HHW) collections facility on 780 Flower St. will be reopening on a partial basis beginning May 27. The HHW facility will open every other Wednesday from 9 am to 2 pm for Glendale and La



Canada residents to drop off items such as pesticides, batteries, pool and yard chemicals, paints and solvents, cleaning products, aerosol cans, medicines, florescent bulbs and tubes, propane containers and sharps/needles (in approved biohazard container). A maximum of 15 gallons of liquid or 125 lbs. of solid hazardous waste may be dropped off during each visit. It is illegal to dispose of hazardous waste in the garbage, down storm drains, or onto the ground. Chemicals in illegally disposed hazardous waste can be released into the environment and contaminate our air, water, and food. Come by to see us to drop off your household hazardous waste safely!



## GLENDALE WATER AND POWER



### Mylar Balloon Safety Tips

During this time of year, balloons are popular gifts for graduation celebrations as well as Father's Day. GWP reminds our customers that metallic balloons, or Mylar balloons, can cause power outages and pose a public safety risk. The safety of our customers and utility workers is always GWP's top priority. We urge our customers to heed this warning

and do their part to keep our Glendale community safe.

Here are some important tips on how to safely and properly handle Mylar balloons in order to reduce the risk of outages and potential injuries:

- Use caution and avoid celebrating with Mylar balloons near overhead electric lines.
- Make sure helium-filled Mylar balloons are securely tied to a weight that is heavy enough to prevent them from floating away. Never remove the weight.
- Keep Mylar balloons indoors when possible. For everyone's safety, never permit Mylar balloons to be released outside.
- Do not bundle Mylar balloons together.
- Never attempt to retrieve any type of balloon, kite, or toy that becomes caught in a power line.
- Never go near a power line that has fallen to the ground or is dangling in the air. Always assume downed wires are energized and extremely dangerous. Call 911 immediately to report downed power lines.
- Florists and other merchants should always make certain that Mylar balloons are properly weighted, and should remind their customers not to release them outdoors.

To report an outage or objects caught in power lines, call 818-548-2011.

## MWD Offers Free Online CA Friendly Landscape Webinars!



Learn how to transform your water guzzling landscape into a CA Friendly, water efficient landscape by taking FREE online Zoom webinars! Metropolitan Water District is offering online, "CA Friendly and Native Plant Landscape Training" and "Turf Removal and Garden Transformation" webinars to Glendale residents. Each class will teach residents about landscape design, how to install, and maintain a smart irrigation system and how to choose the right plants for different areas of landscaping.

- **CA Friendly Native Plant Landscape Webinar:** June 9, 2020 from 5:00 PM to 6:00 PM
- **Turf Removal & Garden Transformation Webinar:** June 11, 2020 from 5:00 PM to 6:00 PM

Prior registration is required for online classes. [Click here](#) for more information and to register today!

## Calendar

**Virtual Teen Night Out Presents:**  
"How Teens Can Find Employment During the Pandemic"  
June 5, 2020  
6:00 p.m. - 7:00 p.m.  
[Flyer](#)

**Virtual Get Fit**  
June 8, 2020  
4:00 p.m. - 5:00 p.m.  
[Flyer](#)

**Club Maple Virtual Hangout**  
Every other Thursday  
June 11 and 25, 2020  
5:30 p.m. - 6:30 p.m.  
[Flyer](#)

**Virtual Teen Night Out Presents:**  
"Recycling During the Pandemic"  
June 12, 2020  
6:00 p.m. - 7:00 p.m.  
[Flyer](#)

**Virtual Teen Night Out Presents:**  
"Mindful Meditation"  
June 19, 2020  
6:00 p.m. - 7:00 p.m.  
[Flyer](#)

**Virtual Teen Night Out Presents:**  
"Cyberbullying During the Pandemic"  
June 26, 2020  
6:00 p.m. - 7:00 p.m.  
[Flyer](#)

**All City of Glendale events have been cancelled through at least July 2020 due to**



## GLENDALE LIBRARY, ARTS, & CULTURE

# CURBSIDE PICKUP



## Curbside Pickup of Library Books is Here!

While all libraries are closed due to COVID-19, Glendale Library, Arts & Culture (GLAC) is now offering contactless Curbside Pickup at the east side parking lot at the Central Library, 222 East Harvard Street, Glendale 91205. The goal of Curbside Pickup service is to offer access to the physical collection of over 750,000 items in a manner that is convenient, safe, and in compliance with County of Los Angeles Health Orders. Anyone with a GLAC library card can place a hold on an item and schedule a time to pick it up. GLAC has also extended check out periods and will not be charging late fines so you can enjoy your items worry-free! Curbside pickup is available Wednesdays and Thursdays, 11AM– 2PM and 4PM – 7PM, and Fridays and Saturdays, 12PM – 6PM. Learn more about Curbside Pickup at [www.eglendalelac.org/curbside](https://www.eglendalelac.org/curbside).

The steps to using curbside pickup are:

1. Place the item on hold as you normally would, using the online catalog.
2. When you receive a notice that your hold is ready for pickup, schedule a pickup time online.
3. Come to the Central Library at your scheduled pickup time, call the library when you arrive, and staff will place your items in your trunk.

If you need assistance placing a curbside pickup request or accessing online



## Take a Tour! Radio Drama Highlights Brand History

Take a tour of Miradero, the former home of Glendale icon Leslie C. Brand, and learn about the fascinating history of the Brand family in this 1920s-inspired radio play! Brand Library & Art Center staff created an illustrated radio play in the old-time style of radio dramas from the 1920s, complete with suspense and sound effects. The illustrated radio play is set during Brand's famous fly-in party in 1921, and the performers take great advantage of the style of the time. The action begins as a guest arrives by *bicycle-plane*, meets Mrs. Brand, and tours the Miradero estate. Inspired by radio dramas found in the Library's online resources Freegal and Alexander Street, the drama is generously illustrated with images from the [Brand Library archives](#).

Staff from Brand Library also curate the [Brand From Home eNewsletter](#) containing streaming music playlists, eBooks to access, art tours from your easy chair, and simple arts & crafts projects you can do at home!



resources, Library staff are available Monday through Saturday via phone at 818-548-2021 and email at [LibraryInfo@GlendaleLAC.org](mailto:LibraryInfo@GlendaleLAC.org); help is available all week through chat at [eGlendaleLAC.org](http://eGlendaleLAC.org). Please note that no curbside pickup service will be available Friday and Saturday, July 3 and 4.

Sign up for a free Glendale Library, Arts & Culture card at: <http://glac.info/register>



## Summer Reading Challenge

The annual Summer Reading Challenge (SRC) program returns to the Glendale Library, Arts & Culture Department (GLAC) from June 1 through August 31, 2020. GLAC has partnered with Beanstack to help make this year's SRC available to readers of all ages.

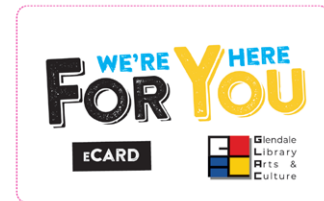
The Children's SRC, now in its 73<sup>rd</sup> year, is open to infants through students in the 8th grade. Children and parents can set their own achievable reading goals and track progress through the Beanstack app to earn badges and prizes. Children and families can enjoy YouTube Storytimes and Craft Videos made by their favorite GLAC Children's Librarians. GLAC is also pleased to offer valuable online resources for children, including TumbleBook Library of learning tools, CreativeBug arts and crafts learning videos, and ABCmouse, the popular learning program for ages 2 - 8.

Teens are encouraged to explore a myriad of genres and topics, such as reading about someone different from themselves, biographies, fiction, even books recommended by family and friends! Take the extra challenge and read each book through a different format, such as listening to audiobooks or reading graphic novels, both of which are available digitally on the [GLAC website](http://www.eGlendaleLAC.org). Teens will use Beanstack to earn virtual "tickets" to assign to prize drawings sponsored by the Glendale Library, Arts & Culture Trust. Teens can explore the GLAC teen webpage to enjoy the library's virtual programs, such as a digital escape room, visual and audio content, and take advantage of GLAC electronic resources to develop academic and creative skills to learn something new. In addition, teens can submit book reviews and receive community service hours through the library's [Teen Speak Book Review blog](http://www.eGlendaleLAC.org).

There's a Summer Reading Challenge for adults, too! Adults can read for fun and earn a chance to win a gift card courtesy of the Glendale Library, Arts & Culture Trust or donate their prize to Ascencia, a Glendale non-profit organization that lifts people out of homelessness. GLAC has a vast selection of online content, including eBooks, eAudio, streaming video and music, as well as eMagazines and eNewspapers from around the world.

Sign up for the 2020 Summer Reading Challenge!

- Visit [Glendale's Beanstack site](http://www.Beanstack.com) or download the Beanstack app and sign up for a free account. You'll need to create a username and password with a valid email address to be eligible for the prize drawing.



## Digital Library at Your Service

Get a free Library card and enjoy tens of thousands of eBooks and eAudiobooks, eNewspapers, eMagazines, online classes, online tutoring, and learning games, as well as streaming movies, music, and more

- Until we reopen please keep items you have.
- Due dates have been extended. No fines and no late fees!
- Items on hold will be waiting for you when we reopen.

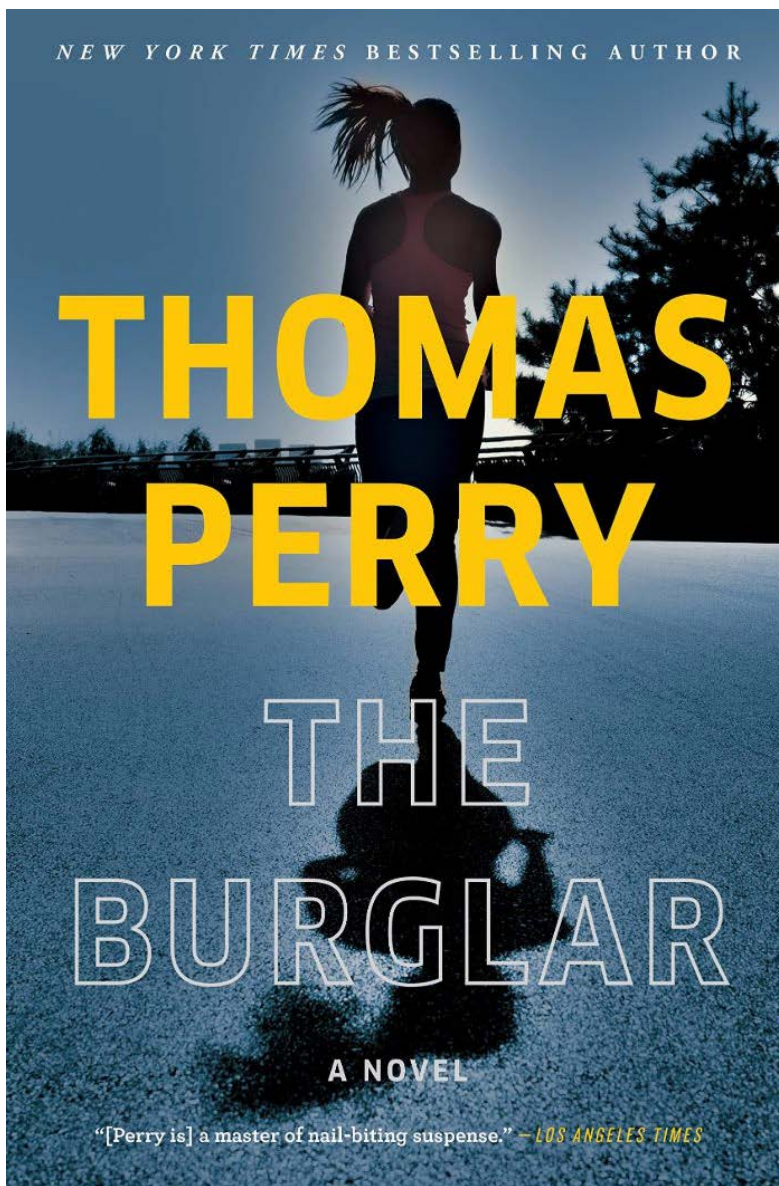
For those who don't have a library card it's easy to get one.

1. Visit <http://glac.info/register> to request Library eCards for every member of your family and set up a PIN for each. OR
2. Download the **Glendale Library, Arts & Culture App** from your App store. Then set up your library card number in the App

For more information please call Library information at 818-548-2021, Monday – Saturday, 8:00 a.m. – 6:00 p.m., or email Library staff at [LibraryInfo@GlendaleCA.gov](mailto:LibraryInfo@GlendaleCA.gov). The Library website is [www.eGlendaleLAC.org](http://www.eGlendaleLAC.org).

## TEENS -- Read a Book, Write a Review - EARN COMMUNITY SERVICE HOURS

Read a book and write a review for one hour of service credit. You can review anything that you're reading for fun (not for school!)—fiction, nonfiction, manga, or anything you want. Your review might appear on the [Teen Blog](http://www.eGlendaleLAC.org).



## New Online Book Club for Adults

The Library is excited to announce the launch of the Glendale Library, Arts & Culture Online Book Club. And the best part, the book is free to download and always available! In this totally online community, readers can connect with their fellow community members through the enjoyment of reading and discussing books. The book club participants will read one book every two to three months, so readers will have plenty of time for each book. The first book club title is *The Burglar* by bestselling author Thomas Perry. Future books will include topics related to lifelong learning, social issues, literature, psychology, and other user-submitted ideas. [Sign-up online.](#)



Learn more [here.](#)



### Library Mobile App

Use the Library, Arts & Culture mobile app to get library services in the palm of your hands, anytime, anywhere! Search for Glendale Library Arts & Culture on your device's app store. Use the app to:

- ACCESS your Library account
- SEARCH the Library catalog and reserve materials
- BOOK a room
- READ eBooks and eMagazines
- STREAM or download music and movies.

Click [here](#) for the Android App on Google Play.  
Click [here](#) for the iOS App on the iOS App Store.

### Brand from Home eNewsletter

Staff from Brand Library & Art Center are curating the **Brand From Home** eNewsletter containing streaming music playlists, eBooks to access, art tours from your easy chair, and simple arts & crafts projects you can do at home. Enjoy this fun and informative eNewsletter [here!](#)

### Other Newsletters

[Community Services and Parks](#)

[Economic Development](#)

[Glendale Water & Power](#)

[Previous City Connection Newsletters](#)

## Tracing Glendale's Past

Have you ever wondered what life in Glendale was like a hundred years ago? Whether you're a native Glendalian, a recently arrived resident, or just passing through, the Early Glendale Newspapers Collection is sure to satisfy your curiosity. Take a peek into Glendale's glorious past chronicled in the *Glendale Evening News*, *Glendale Daily Press*, *The Glendale News*, *Tropico Inter-urban Sentinel*, *Glendale Herald*, and *The Jewel City Press*. Glendale history is just a click away! Read more at our [blog post](#).

## Emergency Preparedness



**My Glendale**

**DURING AN EMERGENCY  
FIND UPDATED INFO HERE**  
[www.glendaleca.gov](http://www.glendaleca.gov)  
[www.glendaleca.gov/EmergencyAlerts](http://www.glendaleca.gov/EmergencyAlerts)





@MyGlendale  
 GTV6 (Spectrum Ch. 6, AT&T Ch. 99)

**EMERGENCY NUMBERS**

Emergencies 911  
 Police Department (818) 548-4911  
 Fire Department (818) 956-4800  
 GWP Emergency line (818) 548-2011  
 Public Works Emergency line (818) 548-3950

**IMPORTANT NUMBERS**

Gas Company (800) 427-2200  
 Humane Society (626) 792-7151  
 Red Cross - Glendale (818) 243-3121

The City of Glendale is ready for any disaster situation. Are you? Use this time at home to check your emergency kit!

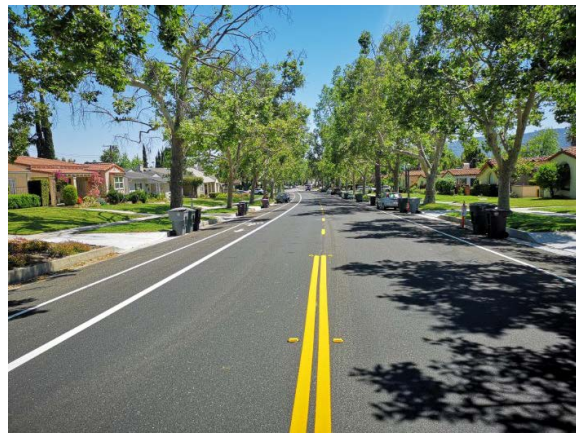
Here are 12 steps to take to prepare yourself and your family for an emergency:

- Create a disaster communication plan
- Store enough water for family and pets for at least 7 days
- Store enough medications for family and pets for at least 30 days
- Buy an adequate first aid kit
- Store enough food for family and pets for at least 7 days
- Buy a large or small container that will contain disaster supplies
- Buy a portable radio, flashlight, and batteries for your disaster kit
- Place clothing, shoes, sanitation and hygiene supplies in your disaster kit
- Place tools in your disaster kit
- Place cash in small bills in your disaster kit
- Place copies of insurance policies and other important papers in disaster kit
- Annually update your disaster kit and review the plan with your family

Read more on our website by clicking [here](#).



GLENDALE PUBLIC WORKS



## Highland Avenue Rehab Project

The Highland Avenue Rehabilitation Project is expected to be completed by mid-June 2020. The project began in October 2019 and was funded by SB-1, the landmark transportation measure that invests in rebuilding California by fixing neighborhood streets and other infrastructure. The project scope included surface grinding and replacement of asphalt concrete pavement; selective reconstruction of concrete curb and gutters, cross gutters, alley aprons, driveways, and sidewalks; construction of curb ramps meeting Americans with Disabilities Act (ADA) requirements; sanitary sewer improvements; other pertinent work; and small scale pavement and drainage improvements at various locations. These include Burchett St., Brand Park Access Road, Lawson Pl., Cavanagh Rd., Victory Blvd., Royal Blvd., Ethel St., and the intersection of Vincent Way and Adam Street. The Public Works team worked extensively with local businesses, residents, and Glendale Unified School District, to ensure minimal disruptions to traffic during the pre-COVID-19 stages of the construction.

**FREE  
Residential Bulky  
Item Pickup**

**Schedule a pickup three days  
before regular collection day**

### Reminder: No Illegal Dumping

**Need to get rid of furniture, appliances or other household bulky items?  
The City has a free pickup service!**

The City of Glendale's free Bulky Item Pickup program is in full operation despite current circumstances related to COVID-19. During this time, residents may spend more time de-cluttering and disposing of excess items. **It is important to remember that dumping items on streets, sidewalks, and even in front of donation centers is illegal.** Please make sure to remind friends, family, and neighbors.



### What is a Recyclable in Glendale?

Test your recycling skills with our interactive quiz at [GlendaleRecycles.com](http://GlendaleRecycles.com). To learn more about Glendale's Recycling Center and what items are acceptable, [click here](#). To find donation and/or recycling locations near you, visit [www.earth911.com](http://www.earth911.com).



Due to the temporary closure of donation centers, we encourage you to set aside donations in your home, including bulky items, until donation centers reopen. To find local recycling or donation locations, visit [www.earth911.com](http://www.earth911.com).

Instead of leaving items on the street, arrange for free **Bulky Item Pick Up** by one of three options:

- 1) **Web:** Submit a [collection request form](#)
- 2) **App:** Download the free MyGlendale app from the [Google Play Store](#) or [Apple Store](#)
- 3) **Call:** (818) 548-3916

If you notice any abandoned items, please call Integrated Waste Management at (818) 548-3916.



## Green Business Program

Do you or someone you know own or operate a business in the City of Glendale?

The City offers free assistance through the Green Business Program where City staff help local businesses become more sustainable, efficient, and profitable.

### The steps are simple:

1. Schedule a pre-assessment with our staff.
2. Staff will provide easy-to-do recommendations.
3. Staff will work with you step-by-step to complete recommended measures.
4. Receive certification from the City of Glendale and State of California!

To find out more information or to schedule a pre-assessment, please email [GreenBusiness@glendaleca.gov](mailto:GreenBusiness@glendaleca.gov) or visit [www.GlendaleRecycles.com/green-business](http://www.GlendaleRecycles.com/green-business). Please share this program with your friends, family, and neighbors!

## Is Your Commercial or Multi-Family Property Mandatory Recycling

Keeping batteries out of your waste, recycling, and yard waste containers all help prevent fires in collection trucks and at the recycling center. Batteries can be properly disposed of at **Fire Stations, Libraries, Community Centers**, and the **Glendale Recycling Center**. For more information about disposing of batteries, [click here](#).



## Holiday Waste Collection

There will be no changes made to the waste collection day schedule on Independence Day, **Saturday, July 4, 2020**. However, City offices will be closed. For more information about refuse collection on holidays, [click here](#).



# ECONOMIC DEVELOPMENT DEPARTMENT

## Two New Accelerators Coming to Glendale!

The City of Glendale received \$1 million from the State of California to launch a Tech Startup Accelerator. After getting feedback from the tech community, start-ups, accelerators, and potential operators, the City will launch two new accelerators:

- THE CHILDREN'S HOSPITAL LOS ANGELES - KIDSX DIGITAL HEALTH ACCELERATOR: Focusing on advancing digital health innovation for pediatric health and healthcare, this accelerator will serve as the first Pediatric-focused digital health accelerator in the world.
- HERO HOUSE GLENDALE: To implement a non-industry specific "Gateway to LA" program that will focus on international or out-of-state companies looking to expand their product in Southern California. It will also accept applicants from Glendale and/or Southern California.

Learn more [here!](#)



## STEPS 2020 Summer Training and Employment Program for Students with Disabilities

Glendale Youth Alliance is Now Accepting Applications for the STEPS 2020 Summer Training and Employment Program for Students with disabilities!! Youth will receive work readiness training and 120 hours of paid work experience at a worksite based on their skills, aptitudes and interests during the summer months.

### Youth Eligibility:

- Must be between the ages of 16-21
- Must have a disability and be able to work independently
- Must have right to work documents
- If under 18, must be able to obtain a work permit from school

Due to COVID 19, GYA staff is working remotely, therefore completed applications can be mailed to our office or emailed to Jasmine Goulet & Mia Titilah.

### Mail completed application packets to:

Glendale Youth Alliance/STEPS  
1255 S. Central Avenue  
Glendale, CA 91204

Or email completed application packets to:

[JVenegas-Goulet@Glendaleca.gov](mailto:JVenegas-Goulet@Glendaleca.gov)  
[mtililah@Glendaleca.gov](mailto:mtililah@Glendaleca.gov)



## Summer 2020 Day Camps Registration

**Summer Day Camp Program Dates:**  
 Monday through Friday, July 6 - August 14, 2020

**Glendale RESIDENT ONLY Registration:**  
 June 22, 2020 beginning at 9:00 a.m. (ONLINE ONLY)

**General Registration begins:**  
 June 23, 2020 at 9:00 a.m. (ONLINE ONLY)

The City of Glendale is pleased to offer child care this summer for your children through our modified Summer Day Camps Program. The City is committed to providing a safe and fun location for your child care needs. All recommendations and restrictions set by the LA County Department of Public Health will be adhered to.

Details concerning the summer operations, and how the City will address COVID-19 restrictions and guidelines will be available at [www.glendaleca.gov/daycamps](http://www.glendaleca.gov/daycamps) beginning June 16.

*All child care programs, such as day camps, are subject to changes or cancellation, based on guidance from the Los Angeles County Department of Public Health and the City of Glendale.*

Glendale Unified School District

### FREE MEALS FOR CHILDREN

Beginning June 15, 2020  
 Monday - Friday  
 Grab and Go, Walk-up and Drive-up Service

All children, **18 years and under**, can pick up **both Breakfast and Lunch** at any of the following locations. Please pick a location convenient to you.

Meal Service: 7:30 a.m. - 9:30 a.m.

Meal Service: 9:30 a.m. - 11:30 a.m.

**ROOSEVELT MIDDLE SCHOOL**  
 222 E. Acacia Ave., Glendale, CA 91205  
 Location: Front of the school on Acacia Ave.

**CERRITOS ELEMENTARY SCHOOL**  
 120 E. Cerritos Ave., Glendale, CA 91205  
 Location: Front of the school on Cerritos Ave.

**CRESCENTA VALLEY HIGH SCHOOL**  
 2900 Community Ave., La Crescenta, CA 91214  
 Location: Front of the school on Community Ave.

**COLUMBUS ELEMENTARY SCHOOL**  
 425 W. Milford, Glendale, CA 91203  
 Location: Front of the school on Milford St.

**GLENDALE HIGH SCHOOL**  
 1440 E. Broadway, Glendale, CA 91205  
 Location: Parking lot off of Verdugo Rd.

**JEFFERSON ELEMENTARY SCHOOL**  
 1540 Fifth St., Glendale, CA 91201  
 Location: Front of the school on Fifth St.

**HOOVER HIGH SCHOOL**  
 651 Glenwood Rd., Glendale, CA 91202  
 Location: Front of the school on Glenwood Rd.

**PACIFIC PARK**  
 501 S. Pacific Ave. Glendale, CA 91204  
 Location: Kenilworth Ave. (near picnic area)

- No paperwork or sign-up required.
- Meals offered for pick up only. No meals consumed on-site.
- Menu subject to change.

Please contact GUSD Nutrition Services for more information (818) 552-2877. This institution is an equal opportunity provider.

## Free Meals for Children

June 15 - August 7, 2020

Starting June 15, 2020 through August 7, 2020, Glendale Unified School District will provide meals for children up to 18 years old at 8 locations, including Pacific Park. Meals will be "Grab and Go", and are available via walk-up and drive-up service. All children, 18 years and younger, can pick up **both breakfast and lunch** from any of the locations. In observance of Independence Day, all sites will be closed on Friday, July 3, 2020. Double meals will be served on Thursday, July 2, 2020 in consideration of the closure.

[Free Meals Flyer](#)

Catch us on YouTube!



This month's episodes:

- [Mayor Agajanian: Glendale's Commitment to Equality](#)
- [Glendale Police Chief's Message: George Floyd](#)
- [Glendale Remembers: Memorial Day 2020](#)
- [Beaudry Hiking Trail](#)

Be sure to tune in to Charter channel 6 or check the City's YouTube channel for new episodes every month!



## Stay Connected!



This is an official publication of the City of Glendale, distributed by the Office of Communications and Community Relations. For inquiries, please contact City Connection Editor Solene Manoukian or (818) 548-4844.