



[Click here to view this message in your browser.](#)

This publication is brought to you by Mayor Ara Najarian, and City Councilmembers Paula Devine, Vartan Gharpetian, Vrej Agajanian, and Frank Quintero

**November 2019**

**Glendale's Holiday on Ice**

**GLENDALE'S HOLIDAY ON ICE**  
 OUTDOOR ICE SKATING RINK  
**NOV. 22<sup>ND</sup> 2019** thru **JAN. 6<sup>TH</sup> 2020**  
 OPEN DAILY | WEATHER PERMITTING  
**CITY HALL PARKING LOT**  
 122 N. Isabel St., Glendale, CA 91206  
 For more information and special event dates, please visit:  
[WWW.GLENDALESHOLIDAYONICE.COM](http://WWW.GLENDALESHOLIDAYONICE.COM)  
 Glendale's Holiday On Ice brought to you by your Glendale City Council.

Did you know that Glendale is getting its own ice skating rink this winter? That's right! You can ice skate at Glendale City Hall located at [613 E. Broadway](#) in the parking lot off of Isabel and Broadway! Glendale's Holiday on Ice will open on November 22, 2019, and you can enjoy skating daily through January 6, 2020. It will even be open on Christmas and New Year's Days!

For more information, please visit [www.glendalesholidayonice.com](http://www.glendalesholidayonice.com).

**Pacific Pool is Open Year Round!**  
**PACIFIC COMMUNITY POOL**  
**IS NOW OPEN YEAR ROUND!**  
 Brought to you by Glendale City Council  
 Measure 5 dollars at work

Pacific Community Pool is now open year round! Come celebrate with

**City Manager's Message**



Yasmin Beers

For many years, the City of Glendale has pursued sustainability efforts as a way to address current and future environmental challenges. The City continuously seeks out new technology and innovations to foster and promote sustainability, and was among the first public agencies to successfully implement certain improvements, such as the use of recycled water, a curbside recycling program, storm drain catch basin inserts, automated utility metering for electric and water, alternative fuel vehicles, and energy saving retrofits such as complete LED retrofit of traffic signals, and lighting retrofits in buildings. Just in the last fiscal year, we also planted 469 new trees throughout the City!

Community Services and Parks with their Happy Thankswimming Party on November 15th from 4:30pm to 6:30pm at Pacific Community Pool. Enjoy an evening of activities including pool games, arts and crafts, photo fun station, and a treasure hunt! There will be light refreshments and Thanksgiving prizes for game winners. For more information, contact Pacific Pool at (818) 937-7433.

## Glendale Water & Power is Here To Help



If you live on a tight budget, then a small financial crisis can throw you off balance. Glendale Water & Power understands and has three programs that can assist you with your electric bills.

**Glendale Care** – Provides monthly electric bill discounts of \$15 per month to low-income customers.

**Helping Hand** – Helps low-income customers continue electric service by providing up to \$150 in one-time GWP bill payment or deposit assistance for low-income customers who are experiencing a temporary financial emergency.

**Guardian Program** – Provides monthly bill discounts to customers who have household members using lifesaving medical equipment or are suffering from afflictions requiring special space conditioning.

For more information or to request an application for these programs, [Click here](#) or call (855) 550-4497.

## Bulky Item Pick Up



Glendale residents can schedule for FREE bulky and electronic item pickup service. Call the Integrated Waste Management Division at

The City of Glendale continues to contribute to sustainability through a variety of programs offered through the Public Works Department. The Department's Integrated Waste Management (IWM) section has programming, education, and processes that further advance this effort. Were you aware of our multi-family recycling tote bag delivery program? During FY 2017-18, IWM launched its In-Unit Recycling Tote program in an effort to make recycling easier and more accessible for residents living in multi-family housing. The program provides recycling tote bags to multi-family units, allowing tenants to collect and carry recyclables to larger containers within their complexes. The recycling bags are a convenient way to remind residents to recycle and engage in sustainable reuse practices. We have delivered over 10,000 bags to apartment buildings throughout Glendale with recycling information. In addition to the program, over 83 street recycling containers have been deployed throughout the City, to include the areas of Montrose, Downtown Glendale, and Civic Center.

To sustain our sustainability efforts and to implement more of these practices throughout the community, the Integrated Waste Management Division also provides educational programs on best practices for recycling and waste management. In the last year, through their in-class educational program, Integrated Waste Management staff visited approximately 500 students and provided 20 free classroom compost/worm bins. In addition, they hosted 360 students at our two annual events that promote sustainability - Earth Day and America Recycles Day. School education was also carried out through six Mr. Eco assemblies and Discovery Cube fieldtrips for 300 students where attendees learned about recycling. Educating our youth empowers them with the knowledge and skills needed for sustainable growth.

The City also became a participant in the California Green Business Network,

818-548-3916 or [click here](#) to complete the electronic form\*.

*Important: The items you're scheduling a pick up for must be included in our "accepted items" list.*

\*Note: Complete the electronic form 3 business days prior to the refuse collection in your area.

## Holiday Refuse Collection



Refuse will be collected as normal for the upcoming Veterans Day and Thanksgiving holidays, so please make sure your bins are out. City offices will otherwise be closed. For more information about holiday collection, [click here](#).

## Tips to Enjoy a Safe and Happy Thanksgiving!

HAVE A SAFE THANKSGIVING  
~REMEMBER TURKEY!~

T	U	R	K	E	Y
<p><b>T</b>haw turkey at a safe temperature - 40°F or below</p>	<p><b>U</b>se extra caution when frying a turkey and oil-free fryers if possible</p>	<p><b>R</b>emember to clean all cooking surfaces regularly</p>	<p><b>K</b>eep children away from hot foods and surfaces, and kitchen utensils</p>	<p><b>E</b>nsure turkey is cooked and has reached minimum temperature of 165°F</p>	<p><b>Y</b>our smoke detector should be tested prior to cooking</p>

seeking to create a business culture of environmental awareness. The City has already certified five businesses at the efficiency tier and is working with five other locations to become certified.

And to leave you with a quick fun fact - The City diverts (recycles) 15% of all bulky and abandoned items collected on a daily basis. To give you an idea of what that really means, IWM collected a total of 2,464 tons in fiscal year 18-19.

A greener Glendale will never be realized through City programs alone. The City greatly relies on the efforts, sacrifices, and behavior changes of residents and businesses that also strive for a greener Glendale. By recycling, composting, utilizing alternative transportation modes, shopping with reusable bags, curbing water and electrical consumption, and implementing green measures during construction, the community champions a more sustainable Glendale.

Below are some tips for how to reduce waste:

### Reduce & Reuse

You can reduce waste by using reusable shopping bags and containers and refillable products, and by avoiding individually wrapped items.

### Donations

Donating is a great way to extend the life of usable items and reduce the impact on City resources. Items that are still in working order and in usable condition can be donated to organizations like [Goodwill](#) and [Salvation Army](#).

### Avoid Contamination

Separate it, don't contaminate it. You don't need a catchy one-liner to avoid contamination. Remove all food waste and only [recycle approved items](#).

### Reduce Household Toxics

With cooking being the number one cause of home fires, the Glendale Fire Department recommends that everyone follow these safety steps and enjoy a Happy Thanksgiving with your families!

## Glendale Unified Dual Language Immersion and Magnet Programs Now Enrolling for the 2020-21 School Year



The lottery application period for Glendale Unified Foreign Language Academies of Glendale (FLAG) dual immersion programs and magnet schools opened Friday, November 1. All students living in- and outside Glendale Unified boundaries are invited to complete a lottery application by visiting [www.gusdmagnetandflag.com](http://www.gusdmagnetandflag.com). Lottery applications must be submitted by January 31, 2020. Students are selected for magnet and FLAG programs each year by a random lottery, which will take place on February 12.

### About Glendale Unified's FLAG Dual Immersion Program

The Foreign Language Academies of Glendale (FLAG) program offers dual language immersion programs in seven languages beginning in kindergarten: Armenian, French, German, Italian, Japanese, Korean, and Spanish. Dual Immersion classes are taught by fully credentialed, bilingual teachers who have additional preparation and expertise teaching in both English and their target language. Learn more at [www.gusd.net/flag](http://www.gusd.net/flag).

## GCC Opportunity to Study Abroad in Armenia

Whoa! Not so fast! Household toxics like bleach, glass cleaner, insect repellent, and disinfectants are special waste, but the plastic containers that they come in are recyclable when empty. Do not recycle the bottle if there is any leftover product! Dispose of your household toxics safely; do not dump them into the sink. Household toxics can only be accepted at the City's [Environmental Management Center](#).

### Reuse and Recycle Outdated Items

Don't refuse to reuse! Bulky items like old appliances can be arranged for free pick-up for reuse or disposal. Consider donating your items. If you no longer use your furnishings or appliances, there may be others who will. Outdated electronics (such as televisions, computers, and cell phones) contain metals that pollute the environment and must be recycled properly. For more information, visit <https://earth911.com/>.

City of Glendale Integrated Waste Management offers a lot more [great information about recycling](#).

City of Glendale Recycling Center accepts [California Redemption Value \(CRV\) containers, batteries and electronics](#).

Hazardous waste: Learn how to properly and safely [dispose of hazardous waste](#).

City of Glendale Integrated Waste Management [Frequently Asked Questions](#).

### Calendar

**Every Other Friday - Teen Night Out, 5:00 p.m. - 9:00 p.m.**

*Pacific Community Center  
501 South Pacific Avenue*

Glendale Teen Night Out is designed to provide free teen activities that include billiards, ping pong, karaoke, PS4, and teen coordinated activities. Snacks and refreshments will be served. In November, these events are scheduled for the



For the first time in more than a decade Glendale Community College is offering a 3-week study abroad course to Armenia in Summer 2020. GCC professors will lead students on an exploration of the culture and society of Armenia featuring numerous field trips, lectures, discussions and hands-on activities.

The program kicks off with a week of on-campus lectures and activities before departing for Yerevan, Armenia, the "Pink City." Entry to cultural sites includes the History Museum of Armenia, Tsitsernakabert, Matenadaran, the National Library of Armenia, Garni Pagan Temple, Geghard Monastery, Areni caves & winery, Goris, Karahunj, Lake Sevan and day trip to the serene town of Dilijan.

Cost of the program is \$2,295 plus air fare and GCC fees. Students must enroll in two courses (4 units total). Full-time GCC students are eligible for \$500 scholarship. On-campus studies are from June 15-18, and abroad studies begin June 20<sup>th</sup> and end on July 12th. For more information: [Glendale.edu/studyabroad](http://Glendale.edu/studyabroad) or call 818-240-1000 ext. 5718.

## Recycling Block Leader Program



We need your help to reduce waste in Glendale! Sign up to become the block leader for your own neighborhood.

To get more information and to sign up, visit [www.GlendaleRecycles.com](http://www.GlendaleRecycles.com) or email [recycle@glendale.gov](mailto:recycle@glendale.gov).

8th and 22nd. Please call (818) 548-4098 with any questions. Learn more [here](#).

**Resume/ cover Letter Workshop – 2 p.m. - 4 p.m.**  
*Verdugo Jobs Center*  
 1255 S Central Ave

The purpose of the resume is to get the interview...are YOU getting the interview? Learn about the right resumes and cover letters for YOU to stand out! Obtain the tools that empower YOU to write, update or complete your resume. The workshop will be held on November 7th and 21st. Learn more [here](#).

**November 9 – Riverwalk Workday– 8 a.m. - 12 p.m.**  
*Glendale Narrows Riverwalk*  
 222 E. Harvard St.

Join us down by the riverside as we work to remove invasive plants from the landscaped areas along the L.A. River. Participants are asked to wear sturdy shoes, protective clothing, and bring sunscreen, sun glasses and a hat. We'll provide tools, gloves, drinks and snacks. Families, individuals, clubs, and students needing community service hours are welcome. Groups of 10 or more, please RSVP at (818) 548-3795. Learn more [here](#).

**November 15 – Glendale Services Connect Day – 10 a.m. – 2 p.m.**  
*Adult Recreation Center & Central Park*  
 201 E Colorado

Over a dozen local private and public service providers will come together to provide information and resources to homeless persons that will facilitate obtaining services and

## Fall Compost Workshop



Attend the last **FREE** compost workshop of 2019 hosted by Public Works Integrated Waste Management. Learn how to reduce organic waste, and create a valuable soil amendment for your garden.

**Date:** November 16, 2019

**Time:** 9:30AM - 11:00AM

**Preregistration deadline is November 11.**

**[\\*Compost and worm bins are available for purchase the day of the workshop while supplies last.](#)**

For more information and to register, [click here](#) or contact [recycle@glendaleca.gov](mailto:recycle@glendaleca.gov)

## Glendale PW's Green Business Program

### Green Business Program

The City of Glendale provides a **free** business assistance program to help local businesses "go green" and become more **efficient, profitable, and sustainable**.

For steps on how to become one of Glendale's first green businesses, visit [www.GlendaleRecycles.com](http://www.GlendaleRecycles.com).

For further information, please email [GreenBusiness@glendaleca.gov](mailto:GreenBusiness@glendaleca.gov) or call (818) 548-3916.

 <p>You can save money on your energy, water and waste bills. You're busy running your business; let us do the work for you!</p>	 <p>83% of consumers say it's important that companies implement environmentally friendly programs. Join the movement!</p>	 <p>After completion of the program, you'll receive an official certification to showcase at your business.</p>	 <p>Join our City and Statewide business network to increase your business (B2B).</p>
---	---	--	--

The City of Glendale provides a free business assistance program to help local businesses "go green" and become more efficient, profitable, and sustainable.

Learn how to Go Green by visiting [GlendaleRecycles.com](http://GlendaleRecycles.com), emailing [GreenBusiness@GlendaleCA.Gov](mailto:GreenBusiness@GlendaleCA.Gov) or by calling (818) 548-3916

## Glendale Art Association's Artwork Showcase

housing. Homeless attendees will learn how to utilize available resources to address the problems contributing to their homelessness. Learn more [here](#).

**November 15 – Friday Night Lecture, "Birds of Prey" – 6:30 – 8:30 p.m.**

*Deukmejian Wilderness Park  
3429 Markridge Rd.*

Join us as we learn about these birds from Southern California and the adaptations that have made them such accomplished hunters. We will take an in-depth look at hawks, eagles, owls, kestrels, and how to spot and appreciate their beauty in our own backyard! Our lecturer, Jane Gao is a Wildlife Biologist that specializes in ornithology and animal behavior studies. This event is **FREE!** Seating is limited. Please RSVP by calling 818-548-3795. Learn more [here](#).

**November 16 – Wilderness Workday – 8 a.m. – 12 p.m.**

*Deukmejian Wilderness Park  
3429 Markridge Rd.*

Help us water our Douglas Firs and Coast Live Oaks, assist with trail repairs, and remove invasive species from the park. This program is perfect for students who need community service hours. Community and youth organizations are welcome. Please wear sturdy shoes and bring a hat, sunscreen, and protective clothing. Drinks and snacks will be provided. Groups of 10 or more, please RSVP at (818) 548-3795. Learn more [here](#).

**November 16 – Maple Inclusive Play (MIP) Day – 11 a.m. – 1 p.m.**

*Maple Park and Community Center  
820 E Maple Ave.*

Join us at the new playground for MIP Day. MIP Day is an opportunity for children of all abilities and ages to come and play at the playground while parents supervise and meet other families. Therapeutic Recreation Program staff will also be present and help event participants with various arts and crafts projects, face painting and more. Through play, the department would like to increase social inclusion and help create a safe place for all



The Glendale Art Association (GAA) is one of the oldest art groups in the state of California. Since April 2019, GAA has been working with the Economic Development Division to install artwork in the vacant storefront at 123 Artsakh Ave. The November show runs through December 5th and showcases a Fall/Winter theme through paintings and mosaics. A Winter Holiday theme is in place for the December 2019 display. For more information about GAA or to join, visit [www.glendaleartassociation.com](http://www.glendaleartassociation.com).

## Reducing Waste through Organic Recycling



Businesses serviced by the City of Glendale may be eligible to participate in the City's pilot Organic Recycling program. Beginning January 1st, 2020, all commercial customers with 4 yd3 or more of solid waste per week must subscribe to organic recycling. For more information, contact the City at (818) 548-3916 or email [recycle@glendaleca.gov](mailto:recycle@glendaleca.gov).

Other commercial customers should contact their waste hauler for more information. Learn more about all that the Public Works Department Integrated Waste Division offers by visiting

members of our community. Learn more [here](#).

**Every Thursday –  
Therapeutic Thursdays – 3  
p.m. – 5 p.m.**

*Pacific Park Library  
501 S Pacific Ave.*

Teens, take time to unwind and color. Supplies will be provided but bring your own if you would like. This event will be held on November 7th, 14th, and 21st.

**November 22– Parent's Night  
Out – 6 p.m. – 12 a.m.**

*Pacific Community Center  
501 S Pacific Ave.*

Get a night off before the Holidays! Drop the kids off for a night of fun activities, friends, food, and a movie at Pacific Community Center.

Participants are encouraged to bring pajamas, a blanket and a pillow. Learn more [here](#).

**November 25 – Movie Night:  
Toy Story 4– 6 p.m. – 8 p.m.**

*Pacific Park Library  
501 S Pacific Ave.*

Join us for a movie night at Pacific Park Library. We will be screening Toy Story 4 and have snacks for the whole family! This screening is free and open to the public!

**November 27 – Red Cross  
Blood Drive – 11 a.m. – 5  
p.m.**

*Montrose Library  
2465 Honolulu Ave*

The Montrose Library will be hosting the Red Cross for a Blood Drive! Pre-register at [redcross.org](http://redcross.org)

Check the [City's calendar](#) and [City Library calendar](#) for changes in date, time, or location.

## The Latest Magazines Online from the Library



Download the latest magazines

[www.glendaleca.gov](http://www.glendaleca.gov).

## The Public Works Department Traffic Signal Installation and Modification at Various Locations and Broadway-Brazil Grade Separation Project



Glendale's Public Works Department has completed work on the Traffic Signal Installation and Modification project. The project consisted of the installation and modification of 6 traffic signals; fiber optic communication installation; construction of Portland Cement Concrete ADA curb ramps, and installation of striping, and other pavement markings.

New traffic signals were installed and existing signals were updated around the City. You can find the new signals at Pacific Ave./ Glenwood Rd. and at Chevy Chase Dr./ Windsor Rd. Existing traffic signals were updated with the latest Caltrans standards at the following intersections: La Crescenta Ave. at Montrose Ave.; La Crescenta Ave. at Honolulu Ave.; Central Ave. at Chevy Chase Dr.; and Broadway/Brazil St. at San Fernando Rd.

This Traffic Signal Modification project also implemented operational enhancements to improve the efficiency of the traffic signal sequencing at the Broadway/Brazil St. and San Fernando Rd. intersection during normal operations and during a train crossing. A state of the art traffic signal controller and traffic signal equipment were installed to improve traffic flow on San Fernando Rd. and West San Fernando Rd.

### Employment Incentive Program for Young Adults

with RB Digital. Read online on your computer, or use the RB Digital app with this free magazine service from Library, Arts & Culture. Sign in with your library card [here](#).

### Looking Ahead

**December 6 & December 20 – Teen Night Out –5 p.m.- 9p.m.**

*Pacific Community Center  
501 South Pacific Avenue*  
Glendale Teen Night Out is designed to provide free teen activities that include billiards, ping pong, karaoke, PS4, and teen coordinated activities. Snacks and refreshments will be served. Please call (818) 548-4098 with any questions. Learn more [here](#).

**December 6– Holiday Tree Lighting Ceremony & Cram-A-Classic Toy Drive– 6:00 p.m. – 8:00 p.m.**

*Glendale City Hall  
613 E. Broadway*  
The City of Glendale and Community Services & Parks Department invites you to the 2019 Holiday Tree Lighting Ceremony and Cram-A-Classic Toy Drive at City Hall! Join us as we light up the night with performances by R.D. White Chorus and Roosevelt Stage Band, holiday movies, food trucks, a special visit from Santa, and Glendale's first ever Holiday on Ice!

Don't forget to bring a new unwrapped toy to participate in Cram-A-Classic Toy Drive!

**December 6 –Parent's Night Out– 6:00 p.m.**

*Pacific Community Center  
501 S Pacific Ave*  
Take a break from the kids just before the holiday season! Drop off the kids for a night of fun activities, friends, food and a movie. The fee is \$15.00 per child, ages 5 to 12 years old. Participants are encouraged to bring pajamas, a blanket and a pillow. For more information, please call (818) 548-2187 or email

[mamazaspyn@glendaleca.gov](mailto:mamazaspyn@glendaleca.gov)

**December 7 – Holly Jolly breakfast with Santa – 9 a.m.- 12 p.m.**

*Artsakh Paseo  
125 N Artsakh Ave.*





# Looking for a Job?

**ENROLL TODAY!**  
**CALL (818) 937-8073**

Are you between the ages of 18 to 24 and **NOT** attending school?

**SERVICES OFFERED:**

- Paid work experience that may lead to permanent employment
- Training
- Case management
- Supportive Services, including hotel vouchers\*

\*Must meet program guidelines and complete necessary forms to qualify for hotel vouchers - funded by State of California HEAP (Homeless Emergency Aid Program)

**GLENDALAYOUTHALLIANCE.ORG**

LOCATED ON THE 2ND FLOOR OF THE VERDUGO JOBS CENTER  
1255 S. CENTRAL AVENUE, GLENDALE CA 91204

The Glendale Youth Alliance is an Equal Opportunity Program. Auxiliary aids and services are available upon request to individuals with disabilities. TTY 818-548-3857

The Employment Incentive Program serves young adults ages 18-24. Participants are placed primarily in private businesses to obtain the necessary skills to gain future employment. The grant pays for the initial 200 training hours as an incentive for the employer to hire the participant. Funding for this program is provided by the Workforce Innovation & Opportunity Act (WIOA).

Participants interested in the Employment Incentive Program must be:

- Between the ages of 18 and 24
- Not attending school at time of enrollment
- Live in Glendale, Burbank or La Canada Flintridge
- Be willing to work part-time, full-time and/or on weekends
- Program also has other eligibility requirements.

The main objective of the Employment Incentive Program is to secure long-term unsubsidized employment for the participants after the completion of the 200 hours of on-the-job training.

**Catch us on YouTube!**



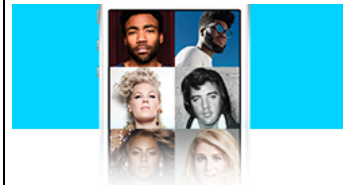
Enjoy coffee and hot chocolate along with breakfast goodies (while supplies last) with Santa. The morning will include crafts for the kids, and opportunity to mail a letter to the North Pole and meet-and-greet with Santa! This event is free. In case of rain, event will be cancelled. For more information, please call (818) 548-2792.

**December 21 – Ugly Sweater Party in the Paseo-- 4 p.m. - 7 p.m.**

*Artsakh Paseo  
125 N Artsakh Ave*

Enjoy an afternoon of pizza and treats (while supplies last) with some of Santa's helpers. The afternoon will include crafts for the kids, dancing and an ugly sweater contest! This event is free. In case of rain, event will be cancelled. For more information, please call (818) 548-2792.

## Freegal Music from the Library



**FREE MUSIC**  
with library card



**LISTEN NOW**  
ON MOBILE & WEB

Freegal is free music service from Library, Arts & Culture. Access 15 million+ songs, including Sony Music's catalog of legendary artists. Features include 24/7 streaming and three downloads per week that you get to keep. There is no software to download, and there are no digital rights management (DRM)

This month's pieces:  
[Holiday Cooking Safety Tips](#)  
[Beyond Limits](#)  
[Glendale Tech Week 2019](#)  
[Walk to School Day 2019](#)

Be sure to tune in to Charter channel 6 or check the City's YouTube channel for new episodes every month!



restrictions. Sign in with your library card [here](#).

## Other Newsletters

[Community Services and Parks](#)

[Economic Development](#)

[Glendale Water & Power](#)

[Library, Arts & Culture](#)

[Previous City Connection Newsletters](#)

## Emergency Preparedness

Do you know who to call or where to get the latest information in the event of a citywide emergency? Click on the image below to find out!

**My Glendale**

**DURING AN EMERGENCY  
FIND UPDATED INFO HERE**  
[www.glendaleca.gov](http://www.glendaleca.gov)  
[www.glendaleca.gov/EmergencyAlerts](http://www.glendaleca.gov/EmergencyAlerts)

@MyGlendale  
 GTV6 (Spectrum Ch. 6, AT&T Ch. 99)

**EMERGENCY NUMBERS**  
 Emergencies 911  
 Police Department (818) 548-4911  
 Fire Department (818) 956-4800  
 GWP Emergency line (818) 548-2011  
 Public Works Emergency line (818) 548-3950

**IMPORTANT NUMBERS**  
 Gas Company (800) 427-2200  
 Humane Society (626) 792-7151  
 Red Cross - Glendale (818) 243-3121

**EMERGENCY**



## Stay Connected

This is an official publication of the City of Glendale, distributed by the Office of Communications and Community Relations. For inquiries, please contact City Connection Editor Solene Manoukian at or (818) 548-4844.