



CITY CONNECTION

CONNECTING TO THE COMMUNITY

[Click here to view this message in your browser.](#)

This publication is brought to you by Mayor Ara Najarian, and City Councilmembers Paula Devine, Vartan Gharpetian, Vrej Agajanian, and Frank Quintero

October 2019

Recycling Tips for Halloween



- Here are some Green Halloween Tips for your family and friends:
- 1. Decorations** — Instead of buying materials for decorations, find supplies for arts and crafts around your home! You can turn stockings with runs into spider-webs and cardboard boxes into tombstones
 - 2. Costumes** — Make your own! Let your kids' imaginations run wild! Make a game of turning old clothes into costumes.
 - 3. Parties** — Cut down on waste by avoiding disposable cups, plates and cutlery.
 - 4. Transportation** — Trick or Treat by walking around your neighborhood instead of driving to another destination. Get to know your neighbors and reduce your carbon emissions!
 - 5. Compost and Recycle** — From party foods to treats to pumpkins, consider composting all organic matter and recycling other items.
 - 6. Reuse** — Don't throw away old boxes or bags, reuse as much as you can! Save larger items to use as storage for next year's decor!
 - 7. Treats** — Buy locally produced foods, candies, and treats! Look for goodies with minimal packaging and/or those packaged in recycled

City Manager's Message



Yasmin Beers

BOO!

It's that wonderful time of year again...sweater weather (hopefully soon), pumpkin flavored everything, and Halloween festivities. It makes me so happy!

I'm going to continue the theme of my last message going – SAFETY - Because we can't be reminded enough.

Halloween is magical for kids: trick-or-treating, classroom parties, and trips to pumpkin patches or haunted houses. But for parents, there are a lot of things that should be considered before taking the kids out for a day of fun. Here are some simple and easy

materials.

8. **Pumpkins** — Buy pumpkins from local farms or farmers' markets. Better yet, grow your own -- kids love to watch them grow!

9. **Jack-o-lanterns** — Don't throw away all the goodies from inside your pumpkin. Toast the seeds for tasty treats, make pumpkin pie or muffins with the fruit! You can also compost it!
Contact recycle@glendaleca.gov for your recycling and composting questions. Have a safe Halloween!

Block Leader Program



Are you a recycling enthusiast? Don't confine your efforts to the inside your home, spread your recycling spirit! There are a variety of ways to get out and become active in your neighborhood and in your community. [Click here](#), become a recycling expert and join our **Block Leader Program!**

Broadway median transformed by a love of trees



Commuters on their way to the 134 and 2 Freeway junction may have noticed extra greenery this month at the intersection of Broadway and Harvey Drive. Sixteen new trees were planted on the intersection's large median island through a collaboration between the City's Forestry Section and Glendale businessman Andy Gombiner. Mr. Gombiner, who has a long history of planting trees in Glendale, approached the City with an offer to donate new trees for the median

Halloween safety tips to help ensure the day is fun and not frightening for all involved.

Make sure costumes fit to prevent falls & select face paint over masks so your child's vision won't be obscured;

Use reflective tape on costumes and have kids carry flashlights and glow sticks to be easily spotted at night;

All costumes, wigs and accessories should be fire-resistant;

Make sure your children have identifying information on them, including their names, their parents' name, and contact info. There are many online stores where you can order custom temporary tattoos that are great for crowded places;

An adult should accompany young children on the trick-or-treating route;

If your older children are going alone, plan and review a route acceptable to you;

Instruct children to travel only in familiar, well-lit areas, and to stick with their friends;

Agree on a specific time children should return home;

Remind your children never to enter a stranger's home or car;

Tell your children not to eat any treats until they return home. Inspect all candy (for your personal favorites, of course) and more importantly, to ensure it is safe;

Children and adults are reminded to put electronic devices down, keep heads up and walk, don't run, across the street;

Stay safe and spooky, and have a happy Halloween!

Calendar

October 10-17 – 6th Annual Glendale International Film

in the spring. Motivated by his commitment, Forestry staff selected a mix of native and non-native trees to complement the existing mature pines on site. The Parks Department installed new irrigation for each of the trees to ensure their establishment and success. We asked Mr. Gombiner to share what inspired him to donate trees to the City via email. He wrote,

"I've owned apartment buildings in Glendale for the better part of 20 years. I strongly believe in the benefits of trees in residential neighborhoods. Aside from their beauty, trees provide shade and cool the air, thus saving energy. A tree-lined street also encourages residents to be outside more and interact, improving the sense of community. In the case of this median, these trees will eventually obscure the view of a large intersection and absorb some of its sound. I would encourage other business people to donate trees not only for their numerous benefits to the community, but because it makes sound business sense as well. Where a canopy of trees exists, apartments and offices rent more quickly and have a higher occupancy rate. Workers report more productivity and less absenteeism. I could go on and on!"

Residents who are interested in donating trees or organizing a tree planting project with the City are encouraged to reach out to the City's Arborist Technician at 818-550-3402.

Dia De Los Muertos

GLA Office of the City Clerk Library, Arts & Culture

Come to Downtown Glendale for...

DÍA DE LOS MUERTOS

SAT | 4PM-9PM

NOV 2

@GlendaleDDL
#GlendaleDDL
www.glendaleddlm.com

ARTSAKH PASEO
between Wilson Ave & Broadway

- Ballet Folklorico
- Storytime
- Community Altar
- Skull Decorating
- Face Painting
- Live Music

Glendale Streetcar Study Requires Public Input

Festival

Various Locations

With a schedule of over 60 films and documentaries to showcase, the Glendale International Film Festival brings together filmmakers from around the world. Proceeds from festival ticket sales support film making and screenwriting skills for Glendale Unified School District students. For more information, click [here](#).

October 12 - Riverwalk Workday
Glendale Narrows Riverwalk
300 Paula Ave.

8:00 a.m. - 12:00 p.m.

Join us down by the riverside as we work to remove invasive plants from the landscaped areas along the L.A. River. Participants are asked to wear sturdy shoes, protective clothing, and bring sunscreen, sun glasses and a hat. We'll provide tools, gloves, drinks and snacks. Families, individuals, clubs, and students needing community service hours are welcome. Groups of 10 or more, please RSVP at (818) 548-3795. [Riverwalk Workday Flyer](#)

October 11 and 25 - Youth & Family Services
Pacific Community Center
501 S. Pacific Ave.

Teen Night Out
Every other Friday
5:00 p.m. - 9:00 p.m.

Glendale Teen Night Out is designed to provide FREE teen appropriate activities that include billiards, ping pong, karaoke, PS4, and coordinated activities. Snacks and refreshments will be served. Please call (818) 937-7240 with any questions.

October 17 - The Missing Pages: The Modern Life of a Medieval Manuscript 7:00 p.m.
Glendale Central Library
222 East Harvard Street

Award-winning author Heghnar Watenpaugh discusses how, in 2010, the world's wealthiest art institution, the J. Paul Getty Museum, was confronted by a century-old genocide through a law suit from the Armenian Church. For more information see the website by clicking [here](#)

October 19 - Annual Fall Festival
Pacific Community Center & Park **501 S. Pacific Ave.**
11:00 a.m. - 2:00 p.m.



The City of Glendale is engaged in a streetcar feasibility study that would seek to connect the Larry Zarian Transportation Center with the vibrant heart of the Downtown area. A modern streetcar line would establish a connection between Glendale's centers of entertainment, dining, shopping, and residents along the Brand Boulevard and Central Avenue corridors. The streetcar will create an improved transit system for those who live and work in Glendale with connections to the Beeline bus service, Metro bus lines and rail services at the Larry Zarian Transportation Center. Now that you know what it's all about, tell us what you think at GlendaleStreetCar.com.

Glendale Police Department Open House

Glendale Police Department

OPEN HOUSE

Saturday, October 12, 2019

10:00 AM - 3:00 PM

- Meet Officers and Detectives
- SWAT Display
- Helicopter Display
- K9 Demonstrations
- Forensic Crime Scene Activity for Children
- Tours of the Police Station and the Old Station Jail
- Recruitment Booth
- MADD Crash Vehicle Display
- Pedestrian Safety Rodeo
- Rock Climbing Wall
- Children's Face Painting
- Entertainment

FREE EVENT

Free lunch provided by the GPOA while supplies last

131 N. Isabel St. Glendale 91206

Free parking at the Civic Center Parking Garage (enter on Wilson Ave.)

For more information, call (818) 548-4818

@GlendalePD @MyGlendale

Please join us in welcoming autumn at our annual Fall Festival. The event will feature a petting zoo, pony rides, food, games, arts & crafts, face painting, music, bounce house, pumpkin patch, carnival games, and the popular Glendale Rocks! Climbing wall. For more information, please call (818) 548-4098.

[Fall Festival Flyer](#)

October 18 - Friday Night Lights

[Verdugo Skate Park](#)
[1621 Canada Blvd.](#)

5:30 p.m. - 8:30 p.m.

Friday Night Lights is offered every third Friday of the month. Enjoy some of the newest skateboard videos on a big projection screen. There will be a raffle and one prize given away monthly. Free snack with the purchase of a raffle ticket. Free admission. For more information, please call (818) 548-2786.

October 19 - Wilderness Workday

[Deukmejian Wilderness Park](#)
[3429 Markridge Rd.](#)

8:00 a.m. - 12:00 p.m.

Help us water our Douglas Firs and Coast Live Oaks, assist with trail repairs, and remove invasive species from the park. This program is perfect for students who need community service hours. Community and youth organizations are welcome. Please wear sturdy shoes and bring a hat, sunscreen, and protective clothing. Drinks and snacks will be provided. Groups of 10 or more, please RSVP at (818) 548-3795.

October 20 - Brand Friendship Garden

[1601 W. Mountain St.](#)
[The Origins of: Anime, Manga & Cosplay Modern Japanese Art, Action and Play](#)

11:00 a.m. - 2:00 p.m.

Join the Friends of Shoseian to learn about and experience these different art forms. View a slide show on the History of Manga from 11:00 a.m. - 12:00 p.m.; an Anime movie from 12:00 p.m. - 1:00p.m.; and a Cosplay Fashion Show from 1:00 p.m. - 2:00 p.m. Enjoy music by DJ "Yui Sensational" and great food from three food trucks. This event is FREE!

Please RSVP by October 17 to friends@shoseianteahouse.com.
[Origins of: Anime, Manga &](#)

The Glendale Police Department is opening its doors for its annual open house! There will be tours of the station and old jail, K9 demonstrations, a SWAT display, forensic crime scene activities for kids, a rock climbing wall, and kids face painting. For more information, call (818) 548-4818.

Glendale Fire Department's 2019 Awards Luncheon

City of Glendale Fire Department

2019 AWARDS LUNCHEON

Wednesday, October 16 - Please RSVP by October 4

11:30 AM to 1:30 PM

Glendale Hilton, 100 W. Glenoaks Blvd., Glendale, CA 91202

Sponsorship Levels		Check Payable to:
1st Alarm: \$300	2 tickets	Glendale Sunrise Rotary Foundation
2nd Alarm: \$600	4 tickets	C/O Glendale Fire Dept.
3rd Alarm: \$1000	10 tickets	421 Oak Street, Glendale, CA 91204
Fire Chief VIP: \$2000	10 tickets + lunch and station tour with the Fire Chief	Individual Tickets: \$85
		Firefighters (sponsored by the GFFA)

RSVP (818) 937-7701
 Payable by check or credit card
<https://www.glendalesunriserotary.org/>



Glendale Sunrise Rotary

Hosted by the Glendale Fire Department and the Glendale Sunrise Rotary
www.glendalefire.org #MyGFD #GFDAwards

Now Boarding With U-Pass



Glendale Community College will start selling the Metro U-Pass on campus this fall. The U-Pass will enable GCC students at any campus to ride both Metro and Beeline buses 24/7 using their GCC student

Cosplay Event Flyer

October 24 - Club Maple Halloween Party and Dance
Maple Park Community Center
820 E. Maple St.
5:30 p.m. - 8:00 p.m.

It's that scary time of the year again! Dress up in your scariest costume and join us for some fun at our Club Maple Halloween Party and Dance.

Club Maple is a free program open to all adults with intellectual disabilities, which provides an opportunity for individuals to experience positive, healthy recreation and socialization experiences. Activities are appropriate to age and skill ability in a friendly and safe environment. Club Maple meets every Thursday from 5:30 p.m. - 8:00 p.m. at Maple Park Community Center, 820 East Maple Avenue, Glendale, CA 91205. For more information, please call Kenneth Khan at (818) 548-3783.

October 25 - Friday Night Lecture

1601 W. Mountain St.
6:30 p.m. - 8:30 p.m.

Johanna Turner has been tracking mountain lions in the Verdugo, San Gabriel, and Santa Monica mountains for ten years. This lecture will feature beautiful wildlife photography of our local felines. Get to know the secretive big cats who share your foothills (some are famous enough to have nicknames!). Find out how motion-sensing 'camera traps' work. Learn how to identify a mountain lion track and other signs you might see on your hikes. She looks forward to answering your questions about P41, Nikita, and Adonis. There will be a small selection of framed prints and greeting cards available for purchase. This event is FREE! Seating is limited. Please RSVP by calling (818) 548-3795.

Big Felines of the Foothills Flyer

October 26 - Campfire Program, "Creepy & Crawly Critters"
Deukmejian Wilderness Park
3429 Markridge Rd.
6:30 p.m. - 8:30 p.m.

Learn more about the slimy, slithery, misunderstood creatures that make us shudder, scream, and squirm as we conquer our fears together. Come at 6:30 p.m. for the crafts or arrive at 7:00 p.m. for the start of the Campfire Program. Seating is on concrete

identification card. Glendale Beeline has joined ten transit operators in Los Angeles County who accept the Metro U-Pass for fare payment.

Bicycle Transportation Plan



Phase 3 of Glendale's Bicycle Transportation Plan (BTP) was recently completed. The BTP proposed a variety of measures, including the improvement of existing bicycle facilities, construction of new bike routes linking major activity centers, and the installation of wayfinding signs to improve riding environment for bicyclists. The BTP connects bike infrastructure to transit hubs, schools, and commercial centers.

Glendale's BTP was approved by Council in August 2012. In January 2014, the Implementation of Glendale Bicycle Transportation Plan, Phase 1 project was completed. In August 2016, the Construction of the Bicycle Facilities (Measure R) and Citywide Bikeway and Pedestrian Improvements Projects completed the second implementation phase. Due to the availability of additional grant funds, staff completed the design of the Bicycle Facilities Project, Phase 2, which allowed for the implementation of Phase 3 of the City's Bicycle Transportation Plan.

Reduce Waste at Your Business or Apartment Complex



CalRecycle, the California Department of Resources Recycling and Recovery, requires businesses and multi-family properties to comply with Assembly Bills 341 and 1826, as well as Senate Bill 1383. These Bills require the recycling of bottles, cans and organic materials, including food, waste, and green waste.

steps, bring a blanket or cushion for your comfort. This event is FREE! Seating is limited. Please RSVP by calling (818) 548-3795. [Creepy & Crawly Critters Flyer](#)

All Trails and Open Space programs are sponsored by the [Glendale Parks & Open Space Foundation](#). [E-mail us](#) to be notified about all Trails and Open Space Program events, and ensure that you don't miss out on events similar to these in the future.

October 26 - One Glendale, After School Youth Sports Program Flag Football Championship Day Pacific Community Center
501 S. Pacific Ave
Consolation Game: 2:00 p.m.
Championship Game: 3:00 p.m.

Community Services & Parks invites you to the One Glendale, After School Youth Sports Program's Flag Football Season Championship Day. Hundreds of spectators are expected to attend both the consolation game and championship game and cheer for the program's participants.

The One Glendale After School Youth Sports Program is a collaboration between the City of Glendale Community Services & Parks Department and the Glendale Unified School District, with sponsorships from Dignity Health Glendale Memorial Hospital, and the Glendale Parks and Open Space Foundation. Additional services are provided by Adventist Health Glendale. The program is designed to provide after school sports programming to youth in eight South Glendale schools in the fourth and fifth grades and is comprised of four sports over the course of four seasons: flag football, basketball, soccer, and volleyball. Each season lasts 8 weeks with a championship game at the conclusion of each season. For more information, please call (818) 937-7246.

October 26 - La Crescenta New Year's Flood of 1934 with Singer Darryl Holter
Glendale Central Library
222 East Harvard Street

Join local artist Darryl Holter on a musical odyssey of Glendale's weather history. Holter sings Woody Guthrie songs and shares video commemorating the 1934 Crescenta New Year's Day flood.

Does your business need help recycling these materials? Contact your hauler directly for more information. If your property is serviced by the City of Glendale call (818) 548-3916 or email recycle@glendaleca.gov for more information.

Glendale Public Works Busy Building and Repairing Infrastructure



Read all about the many improvements to Glendale's public infrastructure and more on [MyGlendale City News](#).

Catch us on YouTube!



This month's pieces:
[How to Prepare for a Disaster](#)
[GWP - You Can Rely On Us](#)
[Glendale Cruise Night 2019](#)

Presented in partnership with the Natural History Museum. For more information see the [website](#):

Check the [City's calendar](#) and [City Library calendar](#) for changes in date, time, or location.

The Latest Magazines Online from the Library



Download the latest magazines with RB Digital. Read online on your computer, or use the RB Digital app with this free magazine service from Library, Arts & Culture. Sign in with your library card [here](#).

Looking Ahead

Glendale's Holiday on Ice

Did you know that Glendale is getting its own ice skating rink this winter? That's right! You can ice skate at Glendale City Hall, at 613 E. Broadway in the parking lot off of Isabel and Broadway!

Glendale's Holiday on Ice will open on November 22, 2019, and you can enjoy skating daily through January 6, 2020. It will even be open on Christmas and New Year's Days!

Keep an eye out for more information coming soon.

America Recycles Day

America Recycles Day is November 15! It's a great opportunity to remind your friends and family to throw their plastic bottles in the recycling bin. Visit www.GlendaleRecycles.com for a fun little recycling quiz and you might learn something new!

Teen Workshop: Community College or University?

November 22, 2019

6:00 p.m. - 7:00 p.m.

An informational workshop on how to apply for college. GCC

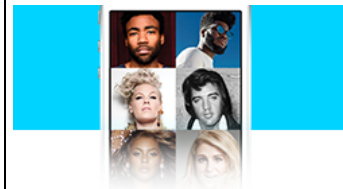


Be sure to tune in to Charter channel 6 or check the City's YouTube channel for new episodes every month!

will explain the difference between a Community College and a four year University along with the importance of applying for scholarships and how to plan ahead both financially and academically. For more information, please call (818) 937-7240.

[Community College or University? Flyer](#)

Freegal Music from the Library



FREE MUSIC
with library card



Freegal is free music service from Library, Arts & Culture. Access 15 million+ songs, including Sony Music's catalog of legendary artists. Features include 24/7 streaming and three downloads per week that you get to keep. There is no software to download, and there are no digital rights management (DRM) restrictions. Sign in with your library card [here](#).

Other Newsletters

[Community Services and Parks](#)

[Economic Development](#)

[Glendale Water & Power](#)

[Library, Arts & Culture](#)

[Previous City Connection Newsletters](#)

Emergency Preparedness

Do you know who to call or where to get the latest information in the event of a citywide emergency? Click on the image below to find out!

EMERGENCY

My Glendale

**DURING AN EMERGENCY
FIND UPDATED INFO HERE**
www.glendaleca.gov
www.glendaleca.gov/EmergencyAlerts

@MyGlendale
 GTV6 (Spectrum Ch. 6, AT&T Ch. 99)

EMERGENCY NUMBERS

Emergencies 911
 Police Department (818) 548-4911
 Fire Department (818) 956-4800
 GWP Emergency line (818) 548-2011
 Public Works Emergency line (818) 548-3950

IMPORTANT NUMBERS

Gas Company (800) 427-2200
 Humane Society (626) 792-7151
 Red Cross – Glendale (818) 243-3121



Stay Connected

This is an official publication of the City of Glendale, distributed by the Office of Communications and Community Relations. For inquiries, please contact City Connection Editor Solene Manoukian at [redacted] or (818) 548-4844.