



CITY CONNECTION

CONNECTING TO THE COMMUNITY



December 2020

[Click here to view this message in your browser.](#)

This publication is brought to you by Mayor Vrej Agajanian, and City Councilmembers Ara Najarian, Paula Devine, Ardy Kassakhian, and Daniel Brotman



FEATURED ARTICLES

Through the Edible Food Recovery Program...

92,391 POUNDS OF CO2 HAVE BEEN SAVED!

THIS IS EQUIVALENT TO...



Greenhouse gas emissions from 40 American cars



CO2 emissions from 4.5 homes' energy use



Weight of 300 refrigerators

Glendale Office of Sustainability's Edible Food Recovery Program

The City of Glendale's Office of Sustainability launched the Edible Food Recovery Program in August of 2020. This program works to mitigate food waste and feed Glendale residents who have been negatively impacted by COVID-19. The Edible Food Recovery Program redirects excess food that would otherwise be thrown away from grocery stores, bakeries, and other food generators, and donates them to food banks and shelters in the Glendale community. To date, there are 6 food establishments participating in the program. Collectively, these businesses have donated more than 100,000 pounds of food!

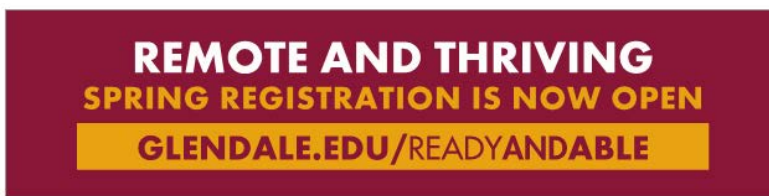
Interim City Manager's Message



Roubik Golanian

I can't believe we are already in the month of December. I don't think there has been any other year in my life in which I have used the word "unprecedented" so often. I think it's safe to say it

If you own or manage a food business within the City of Glendale and would like to learn more or join this program, contact Katie Ross at kross@glendaleca.gov.



Glendale Community College: Remote and Thriving

When GCC transitioned to remote learning in March, the college initially focused on safety while ensuring students obtained a high-quality education. Now that the pandemic has extended remote learning through the entire 2020-2021 academic year, GCC has progressed from surviving to thriving.

For example, GCC's Department of Theater Arts re-imagined the student experience when it recently staged an impressive virtual retelling of H.G. Wells' "War of the Worlds." Student-actors, through no-contact delivery, were provided "kits" that included costumes, lighting instruments and cameras. Using GCC produced how-to videos, the students transformed their bedrooms into mini studios for a visually exciting performance that recreated the 1930's. The remote learning environment gave student-actors an opportunity to expand their experience beyond performance to include stage design/lighting and broadcast streaming. At GCC, we've turned challenges into opportunities.

Reliable. Adaptable. Affordable. GCC is Ready and Able to meet your educational goals. [Register now for Spring classes.](#)



Notice of Availability of Community Development Block Grant (CDBG) Funds

The City of Glendale is accepting applications for eligible Community Development Block Grant (CDBG) funded projects or services for the next Fiscal Year, July 1, 2021 through June 30, 2022. Please visit www.glendaleca.gov/cdbg for instructions, application, and additional documents.

Notice of Availability of 2021 – 2023 Emergency Solutions Grant (ESG) Funds

The City of Glendale will be accepting applications for eligible projects to receive funding from the 2021 – 2023 Emergency Solutions Grant (ESG) related to homelessness. The Request for Proposals in the areas of Outreach, Emergency Shelters, Prevention and Rapid Rehousing was

is the word of the year.

The month of December kicks off many magical holidays that are celebrated by our vast and diverse Glendale community, including Hanukkah, Our Lady of Guadalupe Day, Christmas, Kwanzaa, and in January, Armenian Christmas. With these celebrations come traditions of gathering with our loved ones, making home-cooked meals, and continuing family traditions. This year, however, will have to be different in order to ensure the well-being and safety of those we love. I ask that you continue following County Health orders and only gather with members of your household. With just a little more perseverance and patience, we will be able to return to our normal way of life and gather with those we love soon.

That said, I believe it is important to keep the holiday spirit alive, because we all deserve some joy and light to close out this unique (to say the least!) year. Luckily, the City of Glendale is here to help spread some holiday cheer. While we cannot have our Tree Lighting Ceremony in person, we will be going virtual! Tune-in to our [YouTube Channel](#) or social media accounts @MyGlendale on December 7, 2020 at 6:00pm to help us ring in the holiday season! After the tree is officially lit, you can catch presentations of previous years' performances.

You can also help spread the love by participating in the Cram-a-Classic-Toy Drive! The Community Services and Parks and Fire Departments will be collecting new, unwrapped toys through a socially distanced and safe drive-thru on Thursday, December 10th from 4:00p.m. to 8:00p.m. and on Sunday, December 13, 2020 10:00a.m. to 4:00p.m.

As we close out 2020, we look forward to a new year with new possibilities! Over the year, this community has proven time and time again that we can overcome anything if we do it together. I know we will take this newfound strength into the new year and tackle any obstacles that we may face.

released Friday, November 13, 2020, and applications will be received on December 14, 2020 ONLY. For more information, please visit the [Homeless Services](#) page or call (818) 548-3720.

Notice of Availability of the Emergency Solutions Grant – Coronavirus (ESG-CV) Funds related to homelessness authorized by the Coronavirus Aid, Relief, and Economic Security (CARES) Act of 2020

The City of Glendale released a Request for Proposals on Friday, November 13, 2020, for projects from eligible organizations and City Departments to be executed until September 2022, focused on providing services in the areas of Outreach, Prevention, Emergency Shelters, Rapid Rehousing, Special Services and Administration related to homelessness. Applications will be received on December 14, 2020 ONLY. For more information, please visit the [Homeless Services](#) page or call (818) 548-3720.

With that, I wish you all health and joy this holiday season.



California's Safer-at-Home Order

The State's Regional Stay Home Order went into effect **Sunday, December 6 at 11:59 p.m. and will remain in effect for at least 3 weeks.** According to the State, as of December 5, the Southern California Region has 12.5% staffed adult ICU capacity remaining, which triggered this Order. Because L.A. County is in the Southern California Region, the Los Angeles County Health Officer Order will be modified to fully align with additional safety measures across sectors and the required effective date. The Order prohibits private gatherings of any size, closes sector operations, and requires 100% masking and physical distancing. The State Regional Stay at Home Order is similar to the existing County Safer at Home Health Offer with additional sector closings.

The Regional Stay Home Order would be in effect for 3 weeks after the trigger and instructs Californians to stay at home as much as possible to limit the mixing with other households that can lead to COVID-19 spread. It allows access to (and travel for) critical services and allows outdoor activities to preserve Californians' physical and mental health. This limited closure will help stop the surge and prevent overwhelming regional ICU capacity.

The following sectors are closed:

- Indoor and outdoor playgrounds
- Indoor recreational facilities
- Hair salons and barbershops
- Personal care services
- Museums, zoos, and aquariums
- Movie theaters
- Wineries
- Bars, breweries, and distilleries
- Family entertainment centers

- Cardrooms and satellite wagering
- Limited services
- Live audience sports
- Amusement parks

The following sectors will have additional modifications in addition to 100% masking and physical distancing:

- Outdoor recreational facilities: Allow outdoor operation only without any food, drink or alcohol sales. Additionally, overnight stays at campgrounds will not be permitted.
- Retail: Allow indoor operation at 20% capacity with entrance metering and no eating or drinking in the stores. Additionally, special hours should be instituted for seniors and others with chronic conditions or compromised immune systems.
- Shopping centers: Allow indoor operation at 20% capacity with entrance metering and no eating or drinking in the stores. Additionally, special hours should be instituted for seniors and others with chronic conditions or compromised immune systems.
- Hotels and lodging: Allow to open for critical infrastructure support only.
- Restaurants: Allow only for take-out, pick-up, or delivery.
- Offices: Allow remote only except for critical infrastructure sectors where remote working is not possible.
- Places of worship and political expression: Allow outdoor services only.
- Entertainment production including professional sports: Allow operation without live audiences. Additionally, testing protocol and "bubbles" are highly encouraged.

The following sectors are allowed to remain open when a remote option is not possible with appropriate infectious disease preventative measures including 100% masking and physical distancing:

- Critical infrastructure
- Schools that are already open for in-person learning
- Non-urgent medical and dental care
- Child care and pre-K



COVID-19 Memorial

The City of Glendale unveiled a web-based, virtual memorial to remember and honor the Glendale residents who have lost their lives to COVID-19. The virtual memorial will host submitted stories and photos of residents that will be publicly available on the website.

Residents are encouraged to share stories about their family, friends, and neighbors through an online form that can be accessed at www.glendaleca.gov/COVIDMemorial

Face Coverings

The Emergency Order requiring the use of face coverings was extended without an expiration date. The Council or



Director of Emergency Services could subsequently rescind it when health authorities have determined it is safe to do so. Click [here](#) for more information about face coverings.

To keep the community informed of the importance of face coverings, residents and businesses can pick up free lawn signs. Signs are available at Glendale City Hall located at

613 E Broadway, at the back entrance (Mon-Thurs, 7:30am-5:30pm and Fri, 8am-5pm). Call 818-548-4844 for more information.



COMMUNITY DEVELOPMENT DEPARTMENT



Glendale City Lights Program

The waiting lists for 3-bedroom units in the following affordable housing projects opened on December 3, 2020, and will remain open until December 11, 2020:

- Metropolitan City Lights – 1760 Gardena Avenue
- Glendale City Lights – 3673 San Fernando Road
- Vassar City Lights – 1814 Vassar Street

Applicants may submit only one (1) application per household per waitlist listed above. To apply or receive more information on the Glendale City Lights Project, please [click here](#).



GLENDALE FIRE DEPARTMENT

12 Days of Holiday Safety

It's easy to make safety a part of your holiday with these tips. Tackle one a day and you're well on your way to a safe New Year!



Day 1 What's that noise? Test your smoke and carbon monoxide alarms. Make sure everyone knows what to do if they hear them.

Day 2 What a shocker! Before use, inspect all electrical lights, decorations, and extension cords for damage.

Day 3 Two's company, three's a crowd. Do not overload outlets with too many decorations or devices.

Day 4 Is it working? Test your ground fault circuit interrupters (GFCIs) and arc fault circuit interrupters (AFCIs) to make sure they're protecting you.

Day 5 Ouch! Prevent trips and falls by keeping cords safely along walls and out of doorways and high traffic areas.

Day 6 Kids eat the darndest things! Avoid putting lights, metal hooks, breakable ornaments, and other small decorations within reach of young children.

Day 7 Thirsty? Keep your Christmas tree stand full of water. A fresh, green tree poses less of a fire hazard than a dry tree.

Day 8 Make a wish! Blow out the candles before leaving a room or going to bed.

Day 9 Nice and warm. Keep space heaters at least 3 feet away from anything that can burn—decorations, trees, gifts, and curtains.

Day 10 Can't touch this! Consider installing tamper-resistant outlets/receptacles to prevent kids from inserting objects into the slots.

Day 11 Escape Route: Share your family fire escape plan with overnight guests.

Day 12 Hot stuff! Keep children away from cooking areas; use back burners and turn pot handles in away from little hands.

There is no greater gift you can give your family than a safe and happy holiday! The Glendale Fire Department encourages everyone to follow these 12 steps to Holiday Safety!



GLENDALE COMMUNITY SERVICES & PARKS



Community Services & Parks

Effective 11/30/2020 Until Further Notice



What is Open:

- Equestrian Facility at Riverwalk*
 - Trails and Trailheads*
 - Pacific Community Pool* (Lap Swim Only)
 - Day Camps
 - Sports Fields – Youth Sports
(Permit Holders ONLY. No scrimmages, games or tournaments)
 - Golf Courses*
 - Parks* (No group gatherings)
 - Tennis and Pickleball Courts*
 - Community Gardens*
 - Picnic Tables*
- * Use of these facilities and amenities are allowed for individuals or members of a single household ONLY.

What is Closed:

- All Park Buildings and Indoor Facilities
- All Events and Rentals are Cancelled
- All Recreation Programs and Classes are Cancelled or Offered Virtually
- Gyms
- Splash Pads
- All Senior Centers are Closed
(The Congregate Meals Program for seniors has been modified to frozen meal delivery or Brown Bag pick up for eligible seniors)
- Sports Fields for Adult and Drop-In Sports
- Sports Courts - Volleyball and Basketball
- Outdoor Fitness Equipment
- Skate Parks
- Playgrounds
- Pacific Community Pool (All programs except Lap Swim)
- Picnic Shelters and Picnic Pavilions
(Tables are available for use but reservations are not accepted to prevent organized gatherings)



Kool Dayz Winter Camp 2020

Pacific Community Center and
Sparr Heights Community Center

- Week 1: December 21-23, 2020
- Week 2: December 28-30, 2020
- Week 3: January 4-6, 2021

The City of Glendale, Community Services & Parks Department is proud to offer its Annual Kool Dayz Winter Camp at Pacific Community Center and Sparr Heights Community Center, for campers ages 5 – 14 years old. The three-week camp will take place starting Monday, December 21. Registration is on a weekly basis. The camp will provide a place and



The City of Glendale, Community Services & Parks is committed to providing safe and educational recreational activities, even in these trying times.

Visit GlendaleParksAtHome.com to learn more about parks, activities and programs you can do from home! Challenge yourself with our weekly games, explore our parks and trails, and much more!



Virtual Teen Night Out

opportunity for campers to play, discover, learn, and interact all while abiding by L.A. County Guidelines. Campers will engage in food activities, science experiments, arts & crafts, individual sports, dance, and more!

Registration is available online only. Please visit www.myglendaleparks.com. If you are a Glendale resident, and you have not registered for camp during summer 2020 season, Education Connection and Maple Starz After School Camp, you must verify your residency prior to registration to receive Glendale resident pricing. [CLICK HERE](#) to view the residency policy and steps to verifying your residency.

For questions regarding Kool Dayz Camp at Pacific Community Center, please call Community Services Specialist, Danny Morales at (818) 937-7242 or email dmmorales@glendaleca.gov.

For questions regarding Kool Dayz Camp at Sparr Heights Community Center, please call Community Services Supervisor, Meline Amazaspian at (818) 548-2188 or via email mamazaspian@glendaleca.gov.



Child Care Program During Distance Learning Spaces Still Available

Fall Session Dates: August 19 - December 18, 2020

The City of Glendale, Community Services & Parks Department is here to help you with child care during this fall's distance learning school session with [Education Connection](#) distance learning sites and Maple Starz After School Camp, available at five locations for students ages 5-14. Locations are as follows: Civic Auditorium, Dunsmore Community Building, Glenoaks Park (Joe Bridges Clubhouse), Maple Park Community Center, and Pacific Community Center.

There are two programs in operation, concurrently. The first part of the day is called Education Connection: parents are able to drop off their child(ren) from 7:00 a.m. to 2:00 p.m. at one of the five locations listed above. CSP staff will make sure the children are able to connect to the wireless network and are participating in their remote learning sessions as per their individualized schedules. When the entire pod of 10 to 12 kids is on break, they will be able to participate in various recreational activities. Education Connection is offered at no cost to parents. Participants have to have their own devices, supplies, and lunch.

Maple Starz After School Camp operates from 2:00 p.m. to 6:00 p.m., at all sites. The same participants enrolled in Education Connection can also be enrolled into the Camp for a fee of \$55.00 per week, per child for Glendale residents, and \$70 per week, per child for all others. This portion of the day is

Community Services & Parks has temporarily transitioned the Teen Night Out (TNO) program into a virtual program during the COVID-19 pandemic in order to connect with teens, provide resources, and make sure teens and their families are well and safe.

Teen volunteers will be able to receive volunteer hours for attending virtual Teen Night Out meetings. Those interested in attending our virtual TNO meetings should email John Maghaguian at jmaghaguian@glendaleca.gov or call (818) 937-7247. Follow us on Instagram [@myglendaleteens](https://www.instagram.com/myglendaleteens).

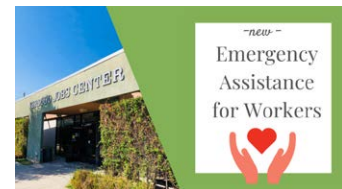


Glendale Youth Alliance's Summer Youth Employment Program Now Accepting Applications

Here is a great opportunity for youth looking for a job! Glendale Youth Alliance's Summer Youth Employment Program is now accepting [applications](#).

The program will provide (with health and safety protocols in place) job opportunities to young adults (ages 16-18), placing them in jobs in a variety of industries, and ensuring that they earn \$15 an hour.

Please see the [flyer](#) for more information.



Verdugo Jobs Center Now Offering COVID-19 Emergency Assistance Program for Workers

based on how CSP conducts its seasonal day camp program, and the themes, activities, and games are adapted versions of our recently concluded summer day camp program.

Education Connection and Maple Starz After School Camp are not designed to offer tutoring or homework assistance to the participants. The staff working in the program are existing department staff who work the seasonal camp program and the One Glendale After School Youth Sports Program.

Weekly registration is required. Space is limited, so register early.

Visit our [website](#) for more information, or call (818) 548-2184.

All LA County Department of Public Health protocols for day camps during COVID-19 will be followed.



FREE Virtual Homework Support

Community Services & Parks Youth & Family Services and the Salvation Army are partnering to offer free virtual homework support in math and English to elementary school students. This online tutoring will be provided Monday through Thursday, 2:00 p.m. - 3:00 p.m. via Zoom. To register, please contact Scarlett Villacorta at (818) 246-5586 extension 1206, or via email at scarlett.villacorta@usw.salvationarmy.org.

If you:

- Live in the Verdugo region of Glendale, Burbank, and La Canada Flintridge
- Have lost your job due to COVID-19
- Need assistance with paying your bills while you look for work

We can help! Eligible clients who access our career and training service may receive assistance with:

- rent
- utilities
- transportation
- child care
- other expenses

The goal of this program is to assist our region's workers in securing employment immediately. Each participant will be assigned a case manager who will provide them, every step of the way, with the support they need to successfully complete training and find employment.

To see if you are eligible and to apply, call (818) 937-8000 or email AskVJC@glendaleca.gov (reference "Special Grants" in subject line). [Click here](#) for answers to frequently asked questions.



GLENDALE WATER AND POWER

GWP Rain Barrel Distribution Event

Rain barrels are a great way to capture rainwater during winter months for use when water is more scarce. If you think a rain barrel can benefit you, why not purchase one through GWP's Rain Barrel Distribution event? Rain barrels will be available from Rain Barrels International for \$65 each, and you may also be eligible to receive a \$35 rebate from the



Metropolitan Water District of Southern California (MWD).

Purchased rain barrels will be delivered to you at no additional cost from Friday, Jan 22, 2021 - Monday, Jan 25, 2021, and will be left on your front porch. Delivery times are between 7:00 a.m. and 5:00 p.m.

After you place your order, you will be emailed more information on:

- What is Rainwater Harvesting
- Benefits of a Rain Barrel
- Rain Barrel Installation
- Water-saving tips
- Rebate Information
- Mosquito Concerns
- General Questions

[Pre-order your rain barrel here](#)

[More information on Rain barrel rebates from MWD](#)

Calendar

Line Dancing: Senior Program

Mondays
12:30 p.m. - 2:30 p.m.

[Virtual Classes for Seniors Flyer](#)

Aerobics: Senior Program

Mondays and Thursdays
9:00 a.m. - 10:00 a.m.

[Virtual Classes for Seniors Flyer](#)

Slow Stretch: Senior Program

Mondays and Thursdays
10:00 a.m. - 11:00 a.m.

[Virtual Classes for Seniors Flyer](#)

Zumba: Senior Program

Tuesday, Wednesdays, Fridays
9:00 a.m. - 10:00 a.m.

[Virtual Classes for Seniors Flyer](#)

Muscle Toning: Senior Program

Tuesdays and Fridays
10:00 a.m. - 11:00 a.m.

[Virtual Classes for Seniors Flyer](#)

"Accessing and Increasing Resources in Older Adult

Quilled Greeting Card

December 08, 2020
7:00 p.m. – 8:30 p.m.

[Learn more](#)

Holiday Stories & Crafts

December 9-12, 2020
Various Times

[Learn more](#)

"How Teens Can Find Employment During the Pandemic"

December 10, 2020
6:00 p.m. - 7:00 p.m.

[Flyer](#)

No-Sew Hand Warmer

December 10, 2020
7:00 p.m. – 8:30 p.m.

[Learn more](#)

Teen G.E.N. Talks: Schyler O'Neal

December 11, 2020
4:30 p.m.

[Learn more](#)

Virtual Get Fit

Hiking and Biking Safety

December 15, 2020
6:00 p.m.

[Flyer](#)

Punch Needle Art

December 16, 2020
10:30 a.m. – 12:30 p.m.

[Learn more](#)

"How to Succeed as a Student-Athlete in High School"

December 17, 2020
6:00 p.m. - 7:00 p.m.

[Flyer](#)

Club Maple Virtual Hangout, Christmas Dinner Giveaway

December 17, 2020
4:30 p.m.

[Flyer](#)

Club Maple Virtual Hangout

December 17, 2020
5:30 p.m. - 6:30 p.m.

[Flyer](#)

Communities”
 December 8, 2020
 10:00 a.m. - 11:00 a.m.
[Flyer](#)

Punch Needle Art
 December 08, 2020
 10:30 a.m. – 12:30p.m.
[Learn more](#)

December 14 and 28, 2020
 4:00 p.m. - 5:00 p.m.
[Flyer](#)

Quilled Greeting Card
 December 15, 2020
 7:00 p.m. – 8:30 p.m.
[Learn more](#)

Teen G.E.N. Talks: Positive Messages
 December 18, 2020
 4:30 p.m.
[Learn more](#)

No-Sew Hand Warmer
 December 19, 2020
 12:00 p.m. – 1:30 p.m.
[Learn more](#)



GLENDALE LIBRARY, ARTS, & CULTURE

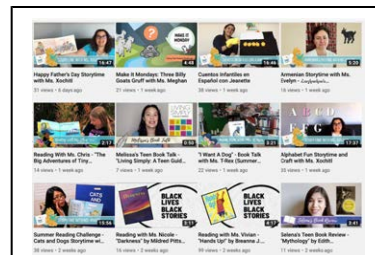
BE THE CHANGE SERIES

Inclusion Diversity Equity Antiracism

Be The Change Series: Inclusion - Diversity - Equity - Antiracism

Be the Change events in 2021 will build a collective understanding of systemic racism, elevate the voices and stories of Black and Indigenous people, and People of Color (BIPOC), and inspire our community to be the change. Over this past year, the Be the Change has commemorated Hispanic/Latinx Heritage Month, Native American Heritage Month, Black History Month, Armenian Genocide Remembrance, Asian American and Pacific Islander Heritage Month, and LGBTQ+ Pride. The series will also examine the one-year anniversary of the 2020 racial justice protests and 100-year anniversary of the Tulsa Race Massacre. Enjoy these 2020 programs on YouTube:

- [Native American author, and attorney Walter R. Echo-Hawk](#) discusses his book, *In the Courts of the Conqueror: The 10 Worst Indian Law*



Weekly Children's Storytimes Streaming on YouTube!

Live children's storytimes premiere every Thursday at 10:00 a.m., on the Glendale Library, Arts & Culture (GLAC). Watch your favorite GLAC Children's Librarians live or later on the GLAC YouTube channel. Learn more [here](#).

Read a Book, Write a Review, Get Community Service Hours!

Teens can read a book and write a review for one hour of service credit. You can review anything that you're reading for fun (not for school!)—fiction, nonfiction, manga, or anything other genre you enjoy!. Your review might appear on the [Teen Blog](#). Learn more [here](#).

Cases Ever Decided, in conversation with Autry Museum President and Chief Executive W. Richard West Jr.

- Author and journalist [Eric Nusbaum](#) discussed his new book, *Stealing Home: Los Angeles, the Dodgers, and the Lives Caught in Between*, with *Los Angeles Times* columnist and author Gustavo Arellano.
- The City of Glendale hosted *Panel on Racism: Past & Present*. Scholars and authors in the fields of racism and racial justice spoke on various areas of expertise. Moderated by Steven Nelson, Dean of the Center for Advanced Study in the Visual Arts at the National Gallery of Art, Washington, D.C.

For more information, see the Be The Change Series [website](#).



GLAC Teens

GLAC has a plethora of resources for teens including [help filling out FAFSA](#), [free homework help](#), [Teen G.E.N. Talks](#), [Teen Graphic Novel Club](#), and the Teen Information Savvy Challenge. There are also opportunities to earn [community service hours](#) by reading books and writing reviews! Check out these programs and more at www.eglendalelac.org/teens

Teen G.E.N. Talks

Teen Glendale Empowerment Now ([G.E.N. Talks](#)) is a video talk show that focuses on empowering youth in Glendale. This teen-centered vodcast (video podcast) focuses on sharing teens' voices, and addressing teen interests and issues. December's talks include a Get to Know Us segment on the fourth, an interview with musician Schyler O'Neil on the eleventh, and positive messages on the eighteenth. Check out our [calendar](#) for more information!



Virtual Meeting Rooms

Reserve a free online meeting room using your Glendale Library, Arts & Culture card. The meeting rooms are for adults with Glendale library cards. There is a 2-hour limit for up to 8 participants per reservation. Click [here](#) to learn more about reserving a virtual meeting room.

Start Your Own Online Book Club with Online Book Kits

You can also start your own book club with the Library's Online Book Kits! Equip yourselves with eBooks or eAudiobooks along with discussion questions, author biographies, book reviews and enhancements from our [webpage](#). For more information about setting up your own book club, call Library staff by phone at 818-548-2021, or by email at LibraryInfo@GlendaleCA.gov.



More Books with Link+

The LINK+ service enables Glendale Library, Arts & Culture borrowers to easily and quickly request a specific book from a consortium of over 70 public, academic, law, theology, and art libraries in California and Nevada. If you can't find a title using the [GLAC catalog](#), simply select LINK+ on the right side to search more libraries. The book you select is pulled by staff at the lending library, placed with a courier, and will arrive within a week to 10 days. You will be notified via email or text message that the book is waiting for them for Curbside Pickup at the Central

CONTACTLESS PICKUP



Expanded Contactless Pickup Service

On Monday, November 9, Glendale Library, Arts & Culture (GLAC) will expand its successful Contactless Pickup service to Brand Library & Art Center, located at 1601 West Mountain Street, and Montrose Library, located at 2465 Honolulu Avenue. Since June, GLAC has been providing safe, contactless pickup services at the Central Library, making its rich collection of 750,000 physical books, movies and music available to the community while libraries are closed to public access.

Brand Library will offer Contactless Pickup service to patrons with items on hold by appointment only.

- Pickup service will be available Mondays, Tuesdays, and Saturdays from 12:00 p.m. – 6:00 p.m. from the Plaza on the west side of the library and next to the accessible parking lot on the east side.

Montrose Library will offer Contactless Pickup service to patrons with items on hold without appointment.

- Pickup service will be available Mondays, Tuesdays and Wednesdays from 11:00 a.m. – 2:00 p.m. and 4:00 p.m. – 7:00 p.m. from the north side of the library near the parking lot.

Central Library continues to offer Curbside Pickup service by appointment only.

- Pickup service is available at Central Library on Wednesdays and Thursdays, from 11:00 a.m. – 2:00 p.m., and 4:00 p.m. – 7:00 p.m., and Fridays and Saturdays, from 12:00 p.m. – 6:00 p.m. Curbside and walk-up service are both available at Central Library.

Anyone with a GLAC library card can place a hold on an item and schedule a time to pick it up. GLAC has also extended check out periods and does not charge late fines, so you can enjoy your items worry-free! Curbside Pickup hours may vary due to holidays. Learn more about [Curbside Pickup](#).

Library. For more information, call GLAC staff at 818-548-2021 or by email at

LibraryInfo@glendaleca.gov.

Afterlife by Julia Alvarez

Glendale Library, Arts & Culture Online Book Club participants are reading *Afterlife* by Julia Alvarez. Download a free copy of the book me to read and participate in online discussions. Join the Online Book Club [here!](#)



Reflections - a multi-media public art installation by Ashton S. Phillips

Through January 2021, Glendale Central Park

Part walking poetry experience, part meditative memorial, and part experimental sound art installation, Reflections is a response to this moment, designed to give voice to a



Arts and Culture Commission

AHA – Art Happens Anywhere

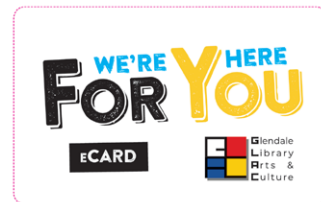
In response to the Coronavirus (COVID-19) and its devastating effects on the arts and culture community, the City of Glendale's Library, Arts & Culture department and the Glendale Arts and Culture Commission re-launched the Art Happens Anywhere ("AHA") Program, with the purpose of encouraging the expansion of arts and culture activities to benefit the residents of our community during these unique times. The following temporary art installations of the 2020/21 Art Happens Anywhere (AHA) Program are sponsored by the Glendale Arts and Culture Commission through funding from the Urban Art Program.



I Am a Small Business- Glendale

Artist Eric Axene presents an immersive virtual experience that can be viewed from any Internet-connected device. The project involves portraits of Glendale business owners taken in their shops, overlaid with audio interviews of store owners, edited interactions with customers (if open), and ambient sounds recorded in and around the shops. The photos combine up to 1000 hi-resolution digital captures and are so highly detailed that the viewer can actually see all of the items in the stores. The online experience will feature a "zoom in" function that allows the viewer to wander and explore around the image at 100% magnification.

diversity of people living through the current crisis and to make space in the public square for reflection on our shared experience of living through a pandemic. Ashton S. Phillips interviewed dozens of participants from across LA County and other quarantined regions of the world as part of this project. The compositions included in this installation are comprised of clips from these interviews arranged thematically and collaged with the sounds of places, events, and materials that participants invoked during their reflections. Learn more [here](#).



Digital Library at Your Service

Get a free Library card and enjoy tens of thousands of eBooks and eAudiobooks, eNewspapers, eMagazines, online classes, online tutoring, and learning games, as well as streaming movies, music, and more

- Until we reopen please keep the items you have.
- Due dates have been extended. No fines and no late fees!
- Items on hold will be waiting for you when we reopen.

For those who don't have a library card it's easy to get one.

1. Visit <http://glac.info/register> to request Library eCards for every member of your family and set up a PIN for each. OR
2. Download the **Glendale Library, Arts & Culture App** from your App store



GYO in Pieces

The Glendale Youth Orchestra, with Henry Shin, conductor and musical director, will present a virtual concert on Sunday, December 13, 2020. The orchestra will be broken up into smaller units as small as duos, trios, and sextets, but none larger than fifteen musicians while all having social distancing. The performances will also feature interviews with members of the orchestra. The members will share how studying music plays a part of their growth as young people in this current period of time. Click [here](#) for more information.



With Love from LA

A monthly series of online conversations and concerts featuring some of LA's best kept secrets, direct from us to you. Learn more about November's musical artist, linaforia. Learn more [here](#).

for [Andriods](#) or [iOS](#). Then set up your library card number in the App

For more information please call Library information at 818-548-2021, Monday – Saturday, 8:00 a.m. – 6:00 p.m., or email Library staff at LibraryInfo@GlendaleCA.gov. The Library website is www.eGlendaleLAC.org.

Other Newsletters

[Community Services and Parks](#)

[Economic Development](#)

[Glendale Water & Power](#)

[Previous City Connection Newsletters](#)

[Brand from Home eNewsletter](#)



Holiday Stories and Crafts

Looking for a fun activity that the family can enjoy together? Central Library is offering [ornament decorating kits](#) for children on December 2-5 and December 9-12, during regular curbside hours. We have a limited amount of supplies so act fast before supplies run out! Then, join us for a LIVE story program and craft demonstration on Saturday, December 12, at 2:00 p.m.



GLENDALE PUBLIC WORKS



Public Works Department Wins American Public Works Association 2020 Building Excellence Shaping Tomorrow (BEST) Award

The American Public Works Association So Cal Chapter recognized the City of Glendale's Implementation of the Bicycle Transportation Plan Project (BTP), Phase 3 with the 2020 Building Excellence Shaping Tomorrow (BEST) Award. Phase 3 was completed April 2019. The project category was in the area of transportation in a community with over 200,000 in population. The BTP has been a work in progress; it was approved by City Council in 2012 and included the improvement of the existing bicycle facilities, construction of new bike routes linking major activity centers, the installation of secured bicycle parking equipment, and the expansion of bicycle education/advocacy programs to improve the riding environment for bicyclists. Phase 1 of the project was completed in March 2014 and included the installation of "Bike Route" signs and poles; shared Roadway Bicycle Pavement Markings, and "Bicycles May Use Full Lane" signs and poles. Phase 2 concentrated on the Construction of the Bicycle Facilities (funded by Measure R) and Citywide Bikeway and Pedestrian Improvements Project was completed August 2016. Visit our [website](#) for more info.



Household Items That Can't Be Placed in the Trash

Are you unsure what to do with hazardous and large items that don't fit into your curbside collection container such as carpet, oil or electronics? Below you'll find information, locations, and instructions for dropping off these items. For questions or additional information, email us at: recycle@glendaleca.gov.

Batteries

Recycle Your Tree With Us!

The Public Works Department will recycle your Christmas tree for free. Trees will be collected between **January 4 – February 26, 2021**. *Due to extremely high demand, service can take up to two weeks, so please be patient.*

How to recycle your tree:

1. Remove ALL decorations (including tree stands, lights, garland and ornaments)
2. Place the tree at the curb on your regularly scheduled collection day.
3. Crews will pick it up within 2 weeks.

For more information on how to recycle your tree with us, [click here](#).



Teaching the New Generation About Recycling

The Department of Public Works Integrated Waste Management Division created a website with many educational resources to promote recycling to the new generation.

Visit www.GlendaleRecycles.com/teachers to find useful lesson plans, games, and other activities to teach others about the importance of waste reduction and recycling. Feel free to contact recycle@glendaleca.gov if you have any questions or for more information

[Environmental Management Center \(EMC\)](#)

- [Glendale's Recycling Center](#)
- Libraries & [Fire Stations](#)
- Home Depot
- [Best Buy](#)
- Staples

Electronics

- [Glendale's Recycling Center](#)
- Best Buy
- Schedule for a [Free Bulky Item Pick Up](#) service

Large Home Appliances

- Schedule for a [Free Bulky Item Pick Up](#) service
- Visit www.Earth911.com for local drop off locations

Oil

- [Environmental Management Center \(EMC\)](#)
- Fire Stations

Paint

- [Environmental Management Center \(EMC\)](#)
- Visit www.Paintcare.org for local paint recycling locations

Pharmaceuticals

- [Environmental Management Center \(EMC\)](#)
- [LA County S.A.F.E. Collection Center](#)

Sharps and medical needles

- [Environmental Management Center \(EMC\)](#)
- 1. Pick up a container from EMC
- 2. Fill and drop off the container to EMC
- 3. Get a replacement container

Visit www.earth911.com to find out where you can recycle items not listed above.



What is Recyclable in Glendale?

The City of Glendale's Recycling Center, operated by the Allan Company, is the central processing facility for materials collected in curbside containers. Many sorting lines separate recyclables at this Material Recovery Facility (MRF) to create bales (cardboard, aluminum, etc.). Companies then buy these bales to make new products.

The Recycling Center pays cash for the following:

- CRV Items (i.e. Glass/Plastic Bottles and Tin/Bi-Metal Cans)
- Scrap Metal - Aluminum, Copper & Stainless Steel
- Newspaper
- Cardboard

The following items can be dropped-off for free:

- Jars and Food Containers (non-CRV)
- Miscellaneous Plastic
- Beverage Cartons
- Mixed Paper

For more information:

Address: 540 W. Chevy Chase Dr. Glendale
Phone: (818) 552-2870
Hours: Mon-Fri: 7:30 am - 4:45 pm
 Saturday: 8:00 am - 3:30 pm



Holiday Waste Collection

The Public Works' Integrated Waste Management Division will be CLOSED on Christmas and New Year's Day. If Friday is your regular collection day, place your container out one day later. The City will service these containers on Saturday, December 26th and Saturday, January 2nd.

View the [Holiday Schedule](#) for more information.



Learn How to Compost Virtually

Did you know that 40 percent of Glendale's trash is organic? Organic materials such as yard trimmings, food scraps and coffee grounds degrade and turn into a valuable soil amendment. The Public Works Department has an online tool which teaches you how to reduce organic waste and create valuable soil amendment for your garden.

How it Works:

- View the online [Basic Composting Course](#).
- [Email us](#) to find out how to obtain a worm or compost bin from the City.
- [Visit our page](#) for more information about the compost bins.



[Catch us on YouTube!](#)

[Medicinal Plant Hike](#)
[Reduce, Reuse, Recycle](#)
[Open House Virtual Series- Police Museum](#)

Stay Connected!



This is an official publication of the City of Glendale, distributed by the Public Information Office. For inquiries, please contact City Connection Editor Solene Manoukian or (818) 548-4844.