



CITY CONNECTION

CONNECTING TO THE COMMUNITY



July 2020

[Click here to view this message in your browser.](#)

This publication is brought to you by Mayor Vrej Agajanian, and City Councilmembers Ara Najarian, Paula Devine, Ardy Kassakhian, and Daniel Brotman



FEATURED ARTICLES



City of Glendale Community Conversation **Panel on Racism: Past & Present**

Thursday, July 30, 2020 • 6:30 P.M. PST

Please join us virtually via Webex [here](#)

Submit questions for the panelists to:
myglendale@glendaleca.gov

The City of Glendale will present a **virtual panel discussion on racism: past and present** on **Thursday, July 30, 2020 at 6:30 p.m.**

Panelists will include:

Steven Nelson (moderator), Dean of the Center for Advanced Study in the Visual Arts and the National Gallery of Art, Washington, D.C. Steven is also Professor Emeritus of African and African American art history at UCLA and, until recently, the director of the UCLA African Studies Center. He is the author of two forthcoming books: *On the Underground Railroad* and *Structural Adjustment: Mapping, Geography, and the Visual Cultures of Blackness*.

Safiya Umoja Noble, Associate professor of Information Studies at UCLA where she also serves as the Co-Director of the Center for Critical Internet Inquiry. She is the author of a best-selling book on racist and sexist algorithmic bias in commercial search engines, *Algorithms of Oppression: How Search Engines Reinforce Racism*.

Hannibal B. Johnson, Esq., Harvard Law School graduate, is a member of the federal 400 Years of African American History Commission. He is an

City Manager's Message



Yasmin Beers

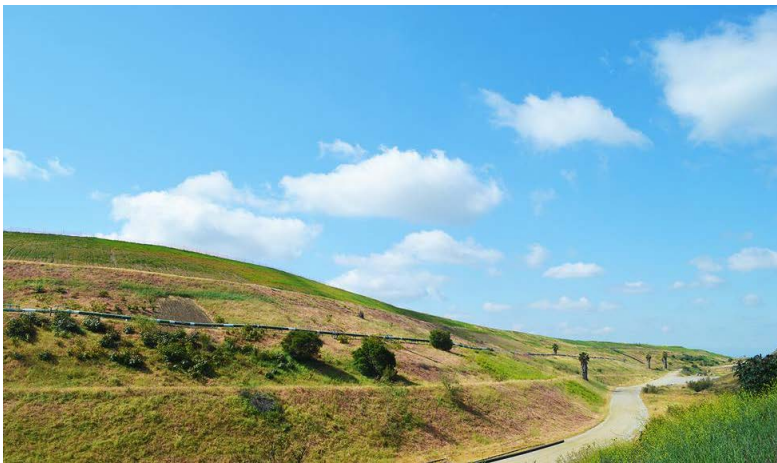
Can you believe we are in the middle of Summer 2020? With the ever-changing situation with COVID-19, I have heard many people say "Summer 2020 is cancelled;" but I don't think "cancelled" is the best term. I would like to say Summer 2020 is *different*. Although most of Glendale's regular summer events have been impacted, virtual and outdoor programs, such as [Al Fresco Glendale](#), that staff has been working hard to produce, will allow for a safe, enjoyable season.

Here are some additional ways we can ease ourselves back into exploring.

expert on Tulsa's Historic Greenwood District and the Tulsa Race Massacre. His books cover those topics, together with others on race and racism in Oklahoma and beyond. Mr. Johnson has held teaching positions at the University of Oklahoma, Oklahoma State University, and the University of Tulsa College of Law. His book *Black Wall Street 100*, is available for preorder in late July.

Gary Keyes, Southern California native and a retired professor, having taught at Glendale Community College (GCC), Pasadena City College, and Crescenta Valley High School for over 40 years. His course, *Race and Differential Application of Justice*, at GCC proved very popular. A graduate of UC Santa Barbara and Cal State Los Angeles, he is the co-author of two books: *Wicked Crescenta Valley* and *Murder & Mayhem in the Crescenta Valley*.

Community members may live-stream the panel by clicking [here](#) or visiting the City's website at glendaleca.gov. Members of the public wishing to ask questions of the panelists prior to the meeting may email myglendale@glendaleca.gov no later than 5 p.m. on Wednesday, July 29, 2020.



Proposed Biogas Renewable Generation Project

Project Location: The Project site is located on an approximately 2.2-acre site completely within the boundaries of the existing Scholl Canyon Landfill (SCLF), in Los Angeles County, at 3001 Scholl Canyon Road, Glendale, California, 91206. Regional access to the landfill is from the Ventura Freeway (State Route 134) at the Figueroa Street exit.

Project Description: The proposed project includes construction and operation of an approximately 12-megawatt power generation facility that would utilize landfill gas as fuel to generate renewable energy. The proposed approximately 2.2-acre power plant would be located on a portion of an approximately 95-acre site owned by Los Angeles County within the City of Glendale's land use and zoning jurisdiction. The proposed Project would beneficially use the landfill gas and would provide environmental and economic benefits regardless of ultimate capacity of the landfill. The proposed project would include the plant facility, natural gas pipeline, water pipeline and two water tanks.

The Draft EIR for the proposed project is available for public review for a period of 90 days at <http://glendalebiogasgeneration.com/#draft-eir>

Written comments must be submitted to [Erik Krause](#), Deputy Director

Pacific Community Pool is officially open for recreation and lap swim! If you're looking to escape the heat, make sure you plan ahead and make reservations to ensure your admittance. [Swim lessons](#) are also available for those looking to earn their fins. Visit GlendaleAquatics.org for more information and details on restrictions.

Our hiking trails have been open for some time, so grab your gear and adventure into Glendale's great outdoors! Please remember to clean up after yourself. Do not dispose of any trash, including masks and gloves, on the trails. [Here](#) you will find maps of all the trails!

Glendale Libraries offer many digital resources, which can be accessed from home with a library card. These include eBooks, movies, music, storytime, book reviews, along with videos for do-it-yourself projects! While libraries are closed due to COVID-19, Glendale Library, Arts and Culture is also offering contactless Curbside Pickup of holds! The goal of this service is to offer access to physical collections in a manner that is convenient, safe, and in compliance with Health Orders. Visit eglendalelac.org for more information.

We typically close out the month of July with Glendale's Annual Cruise Night; however, this year we are changing gears (pun intended!) and will present [Cruise 2020](#). Show off your classic car by cruising down Brand Blvd. or enjoy the show by keeping distance from others, wearing a face covering, and grabbing a bite from one of Downtown Glendale's delicious restaurants.

July is also Parks Make Life Better Month! The City of Glendale Community Services & Parks Department is committed to providing safe and educational recreational activities, even in these trying times. Join them at GlendaleParksatHome.org for online classes and activities that you can view from home. Staff will add new programs regularly,

of Community Development, prior to the close of the 90-day public review period at 5:00 p.m. on September 30, 2020.



DECONSTRUCTING RACISM:

A PERSISTENT AMERICAN CHALLENGE
A SEVEN-PART VIRTUAL LECTURE SERIES


glendale.edu/antiracism

GCC Hosts Lecture Series on Racism in America

Glendale Community College recently hosted an important virtual lecture series "Deconstructing Racism: A Persistent American Challenge." The college's Social Sciences Division, ASGCC, and Student Equity hosted the seven-part series that explored the history of racism in America and ways to create environments that promote diversity, empathy, and racial equity. Although each session touched on a stand-alone topic, viewed as a whole, the series illustrated to the viewer a wider context of how racism affects so many layers of American society. You can watch videos of each presentation and access links to resources by visiting www.glendale.edu/antiracism.

so check back often!

With that, I encourage you to enjoy the Summer of 2020, but do so safely. If you choose to leave your home, don't forget to wear a face covering, keep 6' from others, and wash your hands. It might be a long summer, but with some ingenuity, resilience, and creativity we will make the best of this season.



NOTICE OF PARKING CHANGES

Parking meter enforcement to resume July 1, 2020.
Warnings from July 1-July 14.
Citations starting July 15.

No enforcement of residential street sweeping restrictions until further notice.

For questions, contact Glendale Police Department Parking Enforcement at (818) 548-3131.

Reminder: Parking Meter Enforcement

Parking meter enforcement resumed on July 1, 2020. Warnings will be given from July 1-July 14. Citations will be issued starting July 15.

Due to additional business closures announced on 7/1/2020 by the Governor and County Health Officer, we will not resume parking citations for residential street sweeping until further notice.

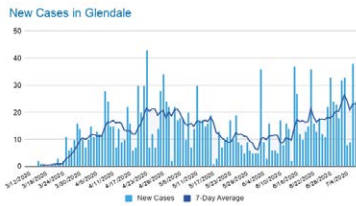
For questions, contact GPD at 818.548.3131



FREE FARE on Beeline & Dial-A-Ride Transit Services until July 31, 2020

Glendale Beeline and Dial-A-Ride transit services are operating on regular schedules with free fare through July 31, 2020. While you may have concerns for riding transit at this time, we want to assure you that we continue to take precautions with enhanced daily cleaning of vehicles. High

touch surfaces on buses are also disinfected throughout the day. All passengers are required to wear face coverings when riding the Beeline or Dial-A-Ride vehicles to help protect our community against the virus. Your safety is our priority. We hope to see you on board!



COVID-19 Dashboards

The City of Glendale has developed two dashboards related to COVID-19. The [COVID-19 Dashboard](#) is updated daily with the number of current positive cases and deaths within the City of Glendale and County of Los Angeles.

The [COVID-19 Financial Dashboard](#) outlines how General Fund revenues for the current fiscal year have been impacted due to the pandemic.

Face Coverings & Reopening

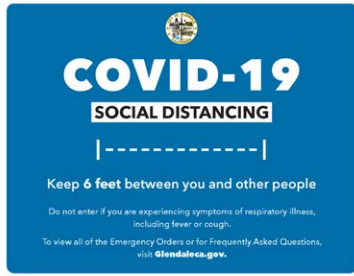
To prevent the spread of COVID-19, individuals must continue to wear a face covering when outside their household. For more information and details, click [here](#).

For a listing of businesses allowed to reopen and to view the protocols that must be prepared, implemented, and posted prior to reopening, click [here](#). All businesses, visitors, and those participating in activities must adhere to distancing and infection control protocols:

- Maintain 6ft physical distancing at all times
- Wear a face covering
- No group gatherings allowed
- Bring your own equipment to court facilities

The City of Glendale has also created various signs that businesses can post on their storefront. The "Social Distancing" sign may be picked up in the Police Department Lobby (131 N. Isabel St., Glendale, CA 91206), while supplies last, or accessed by clicking the link below.

Additional marketing resources are available [here](#).



COVID-19
SOCIAL DISTANCING

-----|

Keep **6 feet** between you and other people

Do not enter if you are experiencing symptoms of respiratory illness, including fever or cough.

To view all of the Emergency Orders or for Frequently Asked Questions, visit glendaleco.gov.



FACE COVERING

Face coverings are **REQUIRED** anytime you leave your home.



SCROLL DOWN TO LEARN MORE ABOUT GLENDALE'S GRANT PROGRAMS



Small Business Grants

[Two new small business grants](#) are available to Glendale businesses! The Small Business Grant Program was created by the Glendale City Council to help local small businesses experiencing difficulties related to COVID-19.

The Program consists of two grants:

- [Small Business Recovery Grant](#)
- [Low Income Small Business Grant](#)

NOTE: Business may only apply for one of the grants or risk disqualification

Application portal is open through July 15, 2020.

Emergency Assistance for Renters

The [Emergency Rental Assistance Program \(ERAP\)](#) provides rent payments to property owners on behalf of an income-eligible household, up to \$750 per month, for two months.

Tenants needing assistance to maintain housing and/or reduce delinquent rental payments may apply. Visit the [ERAP webpage](#) for eligibility

requirements.

Application portal is open through July 15, 2020.



Dine Al Fresco

Downtown Glendale is getting a mini makeover as the [Al Fresco Program](#) makes outdoor dining easier for local restaurants. Restaurants are committed to opening their doors to their loyal customers without compromising public health and safety, so come out to Downtown Glendale and enjoy some al fresco dining. Be on the lookout for al fresco dining in the Montrose Shopping Park too, coming soon.



GLENDALE FIRE DEPARTMENT



Backyard Summer Safety

Summer is here and we are spending more time than ever at home. Our backyards and pools provide a place for great times spent with our family, but don't let your guard down as you enjoy your time. Please watch this video for some very important safety tips to protect your family during the Summer season. Whether you are grilling outdoors or cooling down in the pool, the Glendale Fire Department encourages you to follow these safety steps!



GLENDALE WATER AND POWER



Mylar Balloons

During this time of year, balloons are popular decorations. GWP would like to remind its customers that metallic balloons, or Mylar balloons, can cause power outages and pose a public safety risk. The safety of its customers and utility workers is always GWP's top priority. We urge you to heed this warning and do your part in helping to keep our Glendale community safe.

To reduce the risk of outages and potential injuries, here are some important tips on how to safely and properly handle Mylar balloons:

- Use caution and avoid celebrating with Mylar balloons near overhead electric lines.
- Make sure helium-filled Mylar balloons are securely tied to a weight that is heavy enough to prevent them from floating away. Never remove the weight.
- Keep Mylar balloons indoors when possible. For everyone's safety, never permit Mylar balloons to be released outside.
- Do not bundle Mylar balloons together.
- Never attempt to retrieve any type of balloon, kite, or toy that becomes caught in a power line.
- Never go near a power line that has fallen to the ground or is dangling in the air. Always assume downed wires are energized and extremely dangerous. Call 911 immediately to report downed power lines.
- Florists and other merchants should always make certain that Mylar balloons are properly weighted, and should remind their customers not to release them outdoors.

To report an outage or objects caught in power lines, call 818-548-2011



THINK. ACT. SAVE.
WE ALL HAVE THE POWER!

Summer Conservation Tips

Do your part and help avoid any service interruptions during high temperatures this summer. Please conserve energy when GWP sends out any conservation alerts or Peak Day alerts asking customers to take steps to conserve during certain hours of the day. Below are some helpful energy conservation tips:

- Use a fan instead of your AC. Remember, fans cool people not rooms.
- Close curtains or shades to rooms. The sunlight can increase the temperature in rooms by 3-5 degrees. Thick curtains or drapes also prevent cold air from escaping.
- Properly seal around windows, doors, around recessed lights and vents to prevent from cooler air escaping your home.
- Replace incandescent and CFL lights throughout your home with LEDs. LEDs are more efficient, do not heat up and last longer.
- Consider replacing your thermostat with an EnergyStar or smart thermostat to be able to control temperature settings from your phone.
- Use power strips to plug in phone chargers and other small appliances or electronics with digital clocks or timers. Chargers still use electricity if they aren't charging your phone. By simply turning off one switch to the power strip you turn off the vampire loads.
- Check out our [Marketplace](#) for discounts on LED lights, power strips, smart thermostats, and much more.

- Avoid using the stove, oven, or other major appliances during the hottest times of the day. Consider cooking outside to prevent your home from heating up and your AC from working too hard.
- Use your clothes washer and dishwasher for full loads only. During Peak Day Alerts put off using major appliances until after 8:00 p.m.
- Turn off lights when they are not in use.

[Click here](#) for more energy saving tips.

Calendar

Club Maple Virtual Hangout

Every other Thursday
July 9 and 23, 2020
5:30 p.m. - 6:30 p.m.

[Flyer](#)

Virtual Teen Night Out Presents: “How to Become a Realtor Part 1, How to Get Your Real Estate License”

July 10, 2020
6:00 p.m. - 7:00 p.m.

[Flyer](#)

Virtual Get Fit

July 13 and 27, 2020
4:00 p.m. - 5:00 p.m.

[Flyer](#)

Virtual Teen Night Out Presents: “How to Become a Realtor Part 2, What to Do Once You Have Your Real Estate License”

July 17, 2020
6:00 p.m. - 7:00 p.m.

[Flyer](#)

Cruise 2020

July 18, 2020

[Flyer](#)

Virtual Teen Night Out Presents: “How to Stay Active at Home”

July 24, 2020
6:00 p.m. - 7:00 p.m.

[Flyer](#)

Virtual Teen Night Out Presents: “How to Become a Police Cadet”

July 31, 2020
6:00 p.m. - 7:00 p.m.

[Flyer](#)

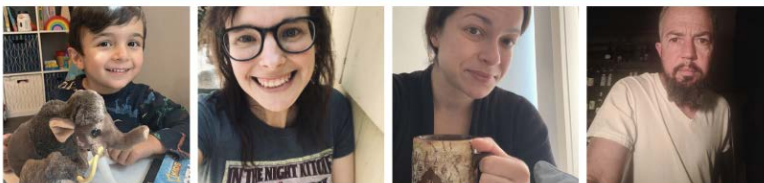
Glendaleca.gov/calendar



GLENDALE LIBRARY, ARTS,
& CULTURE

"Hi, I'm Your Neighbor."

GLENDALE, CA



“Hi, I’m Your Neighbor” - Connecting Glendale

In these times of physical (and social) isolation, Glendale Library, Arts & Culture is still creating ways to connect our community, and we need your help! We hope you will join us by sharing your experience of staying at home during the COVID-19 pandemic.

Participating is easy! Visit glac.info/neighbor and answer three simple questions. Submit your answers with attached photos that represent your experience, such as a selfie (taken at home, without a mask), a photo of your apartment, garden or anything else that is significant to your time at home.

Your contributions will be added to a local history archival collection documenting Glendale during the COVID-19 era. We may also share your photos and answers with the community through our social media accounts and our website.

Be a part of history! Visit <https://glac.info/neighbor>



Pride Month Reading List

In the spirit of diversity, inclusion, and freedom to read, Glendale Library, Arts & Culture (GLAC) is committed to supporting our LGBTQIA+ residents by providing information and resources to raise awareness and advocate for the community. GLAC values our City's rich diversity, and is proud to offer a wide selection of LGBTQIA+ themed fiction and non-fiction for adults, teens, and kids. Readers will enjoy true stories of famous LGBTQ political leaders, celebrities, artists, musicians, and ordinary people, and their challenges and victories along the way.

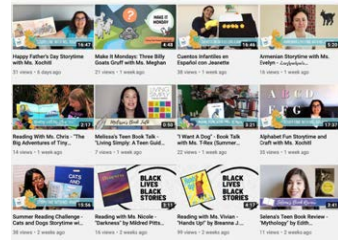
Learn about the fascinating history of the LGBTQ Civil Rights Movement and the evolving culture of the community. Discover resources for learning to deal with personal, family and career issues, coping with discrimination and prejudice, and suggestions for seeking out support. Explore the influence of social, political, and legal systems on LGBTQ individuals and the institutions of LGBTQ marriage

CURBSIDE PICKUP



Curbside Pickup of Library Books is Here!

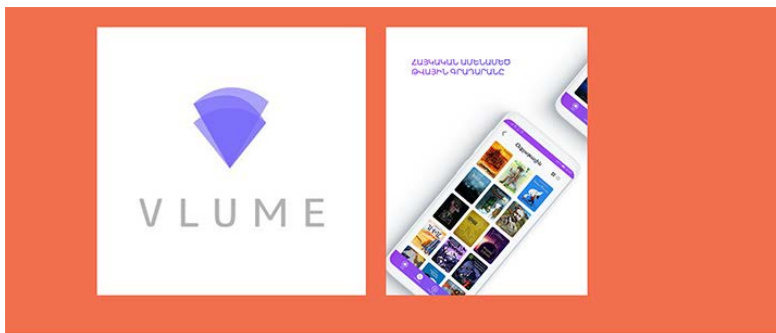
Curbside pickup of Glendale Library, Arts & Culture (GLAC) books is available by appointment Wednesday and Thursday, 11:00 a.m. – 2:00 p.m. and 4:00 p.m. – 7:00p.m., and Friday and Saturday, 12:00 p.m. – 6:00 p.m., except for holiday weekend closures. GLAC launched contactless Curbside Pickup Service at the Central Library on May 26. By mid-June customers had placed almost 2,000 holds, more than double the holds placed in February. Community members are able to drive or walk up to pick up materials. Click [here](#) for more information.



Enjoy the Library's Virtual Programs

Glendale Library, Arts & Culture (GLAC) staff have released over 100 YouTube videos since closing its doors in March. This all new content includes storytimes and book reviews for children and teens, along with videos for do-it-yourself topics, and tutorials for using the array of GLAC online products and services available with your library card. See for yourself! Enjoy our [YouTube](#) videos!

and family. From mystery to drama to science fiction, treat yourself to a variety of LGBTQ themed literature. Learn more [here](#).



1

Download the Vlume App

Ignore the "Subscribe now" button. Tap "Skip" on the top right of your app screen.

Skip

2

Tap the "Settings" icon on the bottom right corner of the page.

Scroll down to "Account" and tap "Institution Membership."



3

Tap the purple "Link" icon, fill in your GLAC library card number and PIN and tap "Continue."



Vlume Armenian Digital Library

Glendale Library, Arts & Culture (GLAC) cardholders now have FREE online access to Vlume, the world's largest Armenian digital library. GLAC is excited to be part of Vlume's first-ever partnership with a public library. Content is available from 12 different publishers of Armenian language materials from almost 300 classical and modern authors. The eBooks are written for all ages in both Eastern and Western orthographies, and audiobooks are narrated by both Eastern and Western Armenian speakers. The growing collection currently includes over 800 titles and over 1,000 hours of audio content, as well as a new collection of animation videos featuring voiceovers by famous actors. Importantly, Vlume's monthly subscription is waived for GLAC cardholders. There is no limit on the number of titles individuals can borrow with this always-available collection of materials, though the service is limited to 100 active users at a time. Access to Vlume is free with a GLAC card/membership. Just follow these easy steps:

You now have access to all items for free through Glendale Library, Arts & Culture for as long as you continuously use the app. If you stop using the app you may have to wait a short time to gain access again.

Learn more about using Vlume by clicking [here](#).



Digital Library at Your Service

Get a free Library card and enjoy tens of thousands of eBooks and eAudiobooks, eNewspapers, eMagazines, online classes, online tutoring, and learning games, as well as streaming movies, music, and more

- Until we reopen please keep items you have.
- Due dates have been extended. No fines and no late fees!
- Items on hold will be waiting for you when we reopen.

For those who don't have a library card it's easy to get one.

1. Visit <http://glac.info/register> to request Library eCards for every member of your family and set up a PIN for each. OR
2. Download the **Glendale Library, Arts & Culture App** from your App store. Then set up your library card number in the App

For more information please call Library information at 818-548-2021, Monday – Saturday, 8:00 a.m. – 6:00 p.m., or email Library staff at

LibraryInfo@GlendaleCA.gov.

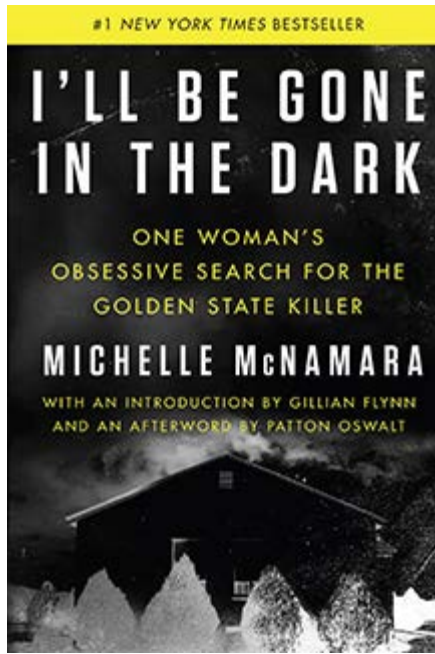
The Library website is

www.eGlendaleLAC.org.



Summer Reading Challenge

The annual Summer Reading Challenge program continues through August 31, 2020. Readers of all ages can sign up, time their reading sessions, and



Online Book Club for Adults Selects Second Title

Over 260 Glendale Online Book Club participants selected *I'll Be Gone in the Dark: One Woman's Obsessive Search for the Golden State Killer* by investigative journalist Michelle McNamara as the club's second book! An HBO documentary series based on McNamara's bestselling book aired in late June. Participants are currently finishing discussions for the first book, *The Burglar* by bestselling author Thomas Perry. Engagement has been high and participants have shared great feedback on the opportunity to connect with other Glendale readers in a totally online community:

"I'm so excited to join this book club! I have been wanting to join one for a while but never had the time to attend in person."

"I finished the book! I think it's the first book I finished reading in a few years, so I'm really excited about that!"

"...this is my first book club. I've always loved reading - working on my 13th book this year but never had people to discuss it with."

GLAC has negotiated for an unlimited number of electronic copies of Online Book Club selections to be made available to Glendalians. Sign-up [here](#).



keep track of books they read with a handy mobile app, Beanstack. There are also challenges for readers of all ages with prize incentives. Sign up for the 2020 Summer Reading Challenge [here](#) or download the Beanstack tracking app and sign up for a free account. You'll need to create a username and password with a valid email address to be eligible for prize drawings.

TEENS -- Read a Book, Write a Review - EARN COMMUNITY SERVICE HOURS

Read a book and write a review for one hour of service credit. You can review anything that you're reading for fun (not for school!)—fiction, nonfiction, manga, or anything you want. Your review might appear on the [Teen Blog](#).

Learn more [here](#).



Library Mobile App

Use the Library, Arts & Culture mobile app to get library services in the palm of your hands, anytime, anywhere! Search for Glendale Library Arts & Culture on your device's app store. Use the app to:

- ACCESS your Library account
- SEARCH the Library catalog and reserve materials
- BOOK a room
- READ eBooks and eMagazines
- STREAM or download music and movies.

Click [here](#) for the Android App on Google Play.

Click [here](#) for the iOS App on the iOS App Store.

Brand from Home eNewsletter

Bioluminescence Wonderment

Enjoy artist Jennifer Swain's art installation, Bioluminescence Wonderment, at the Adams Square Mini Park Gas Station from July 13 – August 21, 2020. You may have seen the beautiful blue or green glow at the beaches this year. That glow is the result of a biochemical reaction which allows marine organisms to create their own light. Bioluminescence Wonderment aims to give people the opportunity to view the glowing colors of jellyfish. This temporary art installation is generously sponsored by the Glendale Arts and Culture Commission through funding from the Urban Art Program, and support from Glendale Library, Arts & Culture, Glendale Community Services and Parks, and the Adams Hill Neighborhood Association. Learn more [here](#).

Staff from Brand Library & Art Center are curating the **Brand From Home** eNewsletter containing streaming music playlists, eBooks to access, art tours from your easy chair, and simple arts & crafts projects you can do at home. Enjoy this fun and informative eNewsletter [here!](#)

Other Newsletters

[Community Services and Parks](#)

[Economic Development](#)

[Glendale Water & Power](#)

[Previous City Connection Newsletters](#)

Emergency Preparedness



My Glendale

**DURING AN EMERGENCY
FIND UPDATED INFO HERE**
www.glendaleca.gov
www.glendaleca.gov/EmergencyAlerts

@MyGlendale
 GTV6 (Spectrum Ch. 6, AT&T Ch. 99)

EMERGENCY NUMBERS
 Emergencies 911
 Police Department (818) 548-4911
 Fire Department (818) 956-4800
 GWP Emergency line (818) 548-2011
 Public Works Emergency line (818) 548-3950

IMPORTANT NUMBERS
 Gas Company (800) 427-2200
 Humane Society (626) 792-7151
 Red Cross - Glendale (818) 243-3121

The City of Glendale is ready for any disaster situation. Are you? Use this time at home to check your emergency kit!

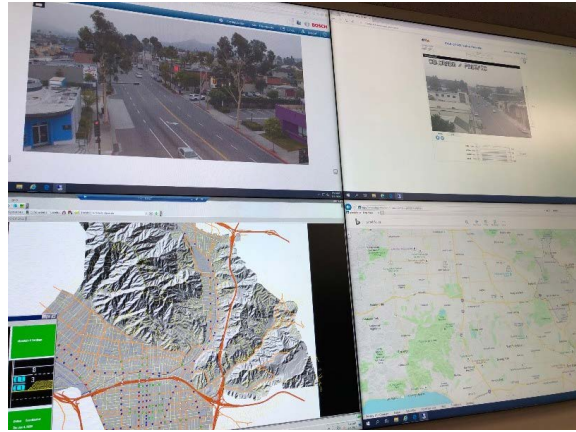
Here are 12 steps to take to prepare yourself and your family for an emergency:

- Create a disaster communication plan
- Store enough water for family and pets for at least 7 days
- Store enough medications for family and pets for at least 30 days
- Buy an adequate first aid kit
- Store enough food for family and pets for at least 7 days
- Buy a large or small container that will contain disaster supplies
- Buy a portable radio, flashlight, and batteries for your disaster kit
- Place clothing, shoes, sanitation and hygiene supplies in your disaster kit
- Place tools in your disaster kit
- Place cash in small bills in your disaster kit
- Place copies of insurance policies and other important papers in disaster kit
- Annually update your disaster kit and review the plan with your family

Read more on our website by clicking [here](#).



GLENDALE PUBLIC WORKS



Glendale Traffic Management Center

The Public Works Department is upgrading and relocating the **Glendale Traffic Management Center (GTMC)**. The existing GTMC, originally built and configured in 1997, is no longer a viable or sustainable solution to support current technologies and communication protocols for newer equipment. Upgrades will include a new central traffic signal control system with greater flexibility and support for real-time technology, which provides the platform for future tools integrating adaptive signals, connected vehicles, vehicle travel times, and system performance. The GTMC will provide staff engineers with a real-time view of traffic signal operations, video feeds from traffic cameras, and allow for real-time adjustment of traffic signals for improved traffic incident response. The Public Works Staff remodeled an area on the second floor of the Municipal Services Building to provide a central operations center for the new GTMC communications equipment, video wall display, and user consoles. The GTMC is scheduled to be operational by August 2020.



Reducing Waste at Home

During the City of Glendale's "Safer at Home" emergency order, residential trash increased. To protect our resources and keep waste to a minimum, here are some simple ways to reduce waste at home:

- **Complete a trash inventory!** See exactly what you are throwing away and categorize based on amount. Generally, you'll find food waste, napkins and/or paper towels, plastic packaging and mail.
- **Try composting food scraps in your back yard or outdoor area!** There are different methods, such as, the Soilsaver Classic Composter, the Wriggley Wranch Bin, and Bokashi. Research these methods to find the best one for you. Use the end product for your or your neighbor's garden. Visit our [website](#) for information on how to obtain a compost bin.
- **Purchase reusable items!** If your waste inventory has large amounts

FREE
Residential Bulky
Item Pickup

Schedule a pickup three days
before regular collection day

Bulky Items? Donate or Call Glendale Waste Management

As residents may spend more time decluttering and disposing of excess items, remember that dumping items on streets, sidewalks, or in front of donation centers is **illegal**.

If the items are in good condition, donate them to a local [donation center](#).

Instead of leaving items on the street, arrange for free **Bulky Item Pick Up** by one of three options:

of paper towels, plastic water bottles, and other single-use items, it's time for a change. Consider purchasing a water filter and reusable water bottles, napkins, kitchen and bath towels, tote bags for shopping and face masks. When ordering take-out, request no utensils and napkins.

- **Reuse items!** Reuse items such as glass jars and other food containers that would otherwise be thrown out. Take notice of your next purchases and think on how you can repurpose them creatively.



Is Your Commercial or Multi-Family Property Recycling Compliant?

Mandatory Recycling: State law requires that commercial properties with more than 4 cubic yards of trash per week and multi-family apartment complexes of 5 units or more must arrange for recycling service.

Mandatory Organics Recycling: Current state law requires that businesses with 4 cubic yards or more of trash service must divert organics (food and green waste). Multi-family properties are required to recycle yard trimmings, but are not required to participate in food waste recycling. Starting in 2022, the threshold changes to 2 cubic yards per week for all businesses and multi-family properties, and food waste must be diverted for multi-family properties,

The City is currently developing resources to assist businesses in improving their environmental footprint through its [Green Business Program](#).

[Contact us](#) for assistance on business and commercial compliance.

- 1) **Web:** Submit a [collection request form](#)
- 2) **App:** Download the free MyGlendale app from the [Google Play Store](#) or [Apple Store](#)
- 3) **Call:** (818) 548-3916

If you notice any abandoned items, please call Integrated Waste Management at (818) 548-3916.



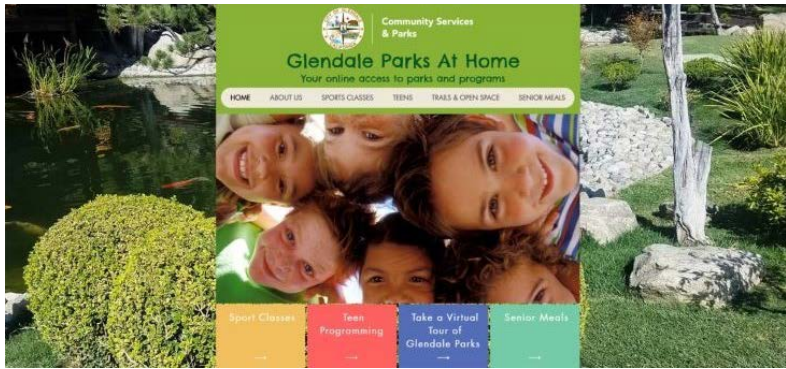
It is picnic season, here are some simple tips to help you reduce waste at your next event:

- Make a reusable picnic basket or portable lunch case to take with you.
- Avoid the use of plastics by serving food on napkins.
- Use reusable cups, plates, napkins and utensils.
- Take food scraps home for composting



Recycle Right

Our [recycling brochure](#) provides detailed information about what can be recycled and what should be placed in the trash container. Knowing what goes in the curbside recycling containers helps keep our environment clean, healthy, and reduces program costs. Are you already a pro recycler? Take the quiz at www.GlendaleRecycles.com to test your knowledge and find out!



July is Parks Make Life Better Month! Celebrate our local parks with the City of Glendale, Community Services & Parks Department throughout the month of July. Visit GlendaleParksAtHome.com to learn more about parks, as well as activities and programs you can do from home! Challenge yourself with our games and trivia, explore our parks and trails, and much more!



L.A. County Free Delivery Service for Older Adults

As our seniors practice "Safer at Home" principals, Los Angeles County Workforce Development Aging and Community Services (WDACS) is offering a free delivery program for older adults and individuals with disabilities. This Countywide program, called Critical Delivery Service, will deliver groceries, household items, and other vital necessities to individuals who are unable to leave their homes due to the COVID-19 pandemic.

Items may be delivered 24 hours a day, 7 days a week, at no cost to the client. Items must be pre-paid and ready for pickup. Deliveries may be scheduled by calling **1-888-863-7411** between 8:00 am and 5:00 pm, Monday through Friday. Clients may utilize this service up to four times or 40 miles per month, whichever comes first.

Critical Delivery Service program will enable seniors to stay at home and still have food on their table.

[Critical Delivery Service Factsheet](#)

Great Plates Program



Facilities Opened Since Initial Closures

As part of Glendale's road to recovery and in accordance with direction from the County of Los Angeles, the following facilities have opened since initial closures:

Open as of May 9, 2020

- Golf course
- Parks, not including playgrounds, sport courts, picnic amenities, and exercise equipment
- Trails and trailheads - To help keep them open, [please adhere to these protocols](#) (protocols are subject to change).

Open as of May 16, 2020

- Tennis and Pickleball Courts [Tennis and Pickleball Guidelines](#)
- Palmer Community Garden [Palmer Community Garden Guidelines](#)
- Equestrian Facility at Riverwalk [Equestrian Centers Guidelines](#)

Open as of June 12, 2020 (date opened by LA County)

WDACS is also offering the Great Plates meal delivery service in LA County as of Monday, May 11 to assist seniors in need of home delivered meals and to help get the restaurant, hospitality, and transportation community back to work. This is in addition to the Elderly Nutrition Program that Glendale's Community Services & Parks is running. There are criteria for both seniors and restaurants in order to qualify. For more information, you can visit the County website <https://wdacs.lacounty.gov/greatplates/>.

Glendale Unified School District

FREE MEALS FOR CHILDREN

Beginning June 15, 2020

Monday - Friday

Grab and Go, Walk-up and Drive-up Service



All children, **18 years and under**, can pick up **both Breakfast and Lunch** at any of the following locations. Please pick a location convenient to you.

| | |
|-------------------------------------------------------------------------------------------------------------------------------------------------------|-------------------------------------------------------------------------------------------------------------------------------------------------|
| Meal Service: 7:30 a.m. - 9:30 a.m. | Meal Service: 9:30 a.m. - 11:30 a.m. |
| <p>ROOSEVELT MIDDLE SCHOOL 222 E. Acacia Ave., Glendale, CA 91205 Location: Front of the school on Acacia Ave.</p> | <p>CERRITOS ELEMENTARY SCHOOL 120 E. Cerritos Ave., Glendale, CA 91205 Location: Front of the school on Cerritos Ave.</p> |
| <p>CRESCENTA VALLEY HIGH SCHOOL 2900 Community Ave., La Crescenta, CA 91214 Location: Front of the school on Community Ave.</p> | <p>COLUMBUS ELEMENTARY SCHOOL 425 W. Milford, Glendale, CA 91203 Location: Front of the school on Milford St.</p> |
| <p>GLENDALE HIGH SCHOOL 1440 E. Broadway, Glendale, CA 91205 Location: Parking lot off of Verdugo Rd.</p> | <p>JEFFERSON ELEMENTARY SCHOOL 1540 Fifth St., Glendale, CA 91201 Location: Front of the school on Fifth St.</p> |
| <p>HOOVER HIGH SCHOOL 651 Glenwood Rd., Glendale, CA 91202 Location: Front of the school on Glenwood Rd.</p> | <p>PACIFIC PARK 501 S. Pacific Ave. Glendale, CA 91204 Location: Kenilworth Ave. (near picnic area)</p> |

- No paperwork or sign-up required.
- Meals offered for pick up only. No meals consumed on-site.
- Menu subject to change.

Please contact GUSD Nutrition Services for more information (818) 552-2677. This institution is an equal opportunity provider.

Free Meals for Children

June 15 - August 7, 2020

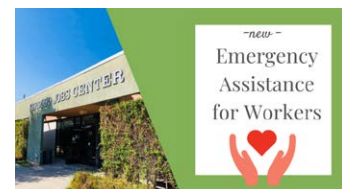
As of June 15, 2020 and through August 7, 2020, Glendale Unified School District (GUSD) is providing meals for children up to 18 years old at 8 locations, including Pacific Park. Meals will be "Grab and Go", and are available via walk-up and drive-up service. All children, 18 years and younger, can pick up **both breakfast and lunch** from any of the locations. In observance of Independence Day, all sites will be closed on Friday, July 3, 2020. Double meals will be served on Thursday, July 2, 2020 in consideration of the closure.

Beginning July 1, 2020, staff from Adventist Health Glendale who work for "Champions for Change" will be on site at Pacific Park providing cookbooks to parents to help promote healthy and nutritious eating while preparing meals at home.

Community Services & Parks (CSP) will also partner with GUSD to provide free lunch and breakfast to day camp participants at all four sites. CSP staff will pick up the pre-packed food and deliver to each camp site where the children will be able to eat a free meal at camp.

- Day Camps – The City is started Day Camps on July 6, 2020. Registration opened to Glendale Residents on June 22, 2020 and the general public on June 23, 2020. Click [here](#) for more information.
- Pacific Community Pool opened starting June 15 for Recreation and Lap Swim. Swim Lessons will begin on July 7. Visit GlendaleAquatics.org for more information. [Pacific Community Pool Guidelines](#)
- Field rentals for sports camps and/or sports clinics under Day Camp guidelines. County allowed field use for sports camps/clinics under the Day Camp guidelines effective June 12, 2020, but the City opened it effective June 22, 2020.

Please check our [website](#) for updates.



Verdugo Jobs Center Now Offering COVID-19 Emergency Assistance Program for Workers

If you:

- Live in the Verdugo region of Glendale, Burbank, and La Canada Flintridge
- Have lost your job due to COVID-19
- Need assistance with paying your bills while you look for work

We can help! Eligible clients who access our career and training service may receive assistance with:

- rent
- utilities
- transportation
- child care
- other expenses

CSP is proud to collaborate with GUSD and Adventist Health Glendale to provide meals to our youth during these trying times as well as promote health and nutrition.

[Free Meals Flyer](#)

The goal of this program is to assist our region's workers in securing employment immediately. Each participant will be assigned a case manager who will provide them, every step of the way, with the support they need to successfully complete training and find employment.

To see if you are eligible and to apply, call (818) 937-8000 or email AskVJC@glendaleca.gov (reference "Special Grants" in subject line). [Click here](#) for answers to frequently asked questions.

Catch us on YouTube!



Stay Connected!



This is an official publication of the City of Glendale, distributed by the Public Information Office. For inquiries, please contact City Connection Editor Solene Manoukian or (818) 548-4844.