

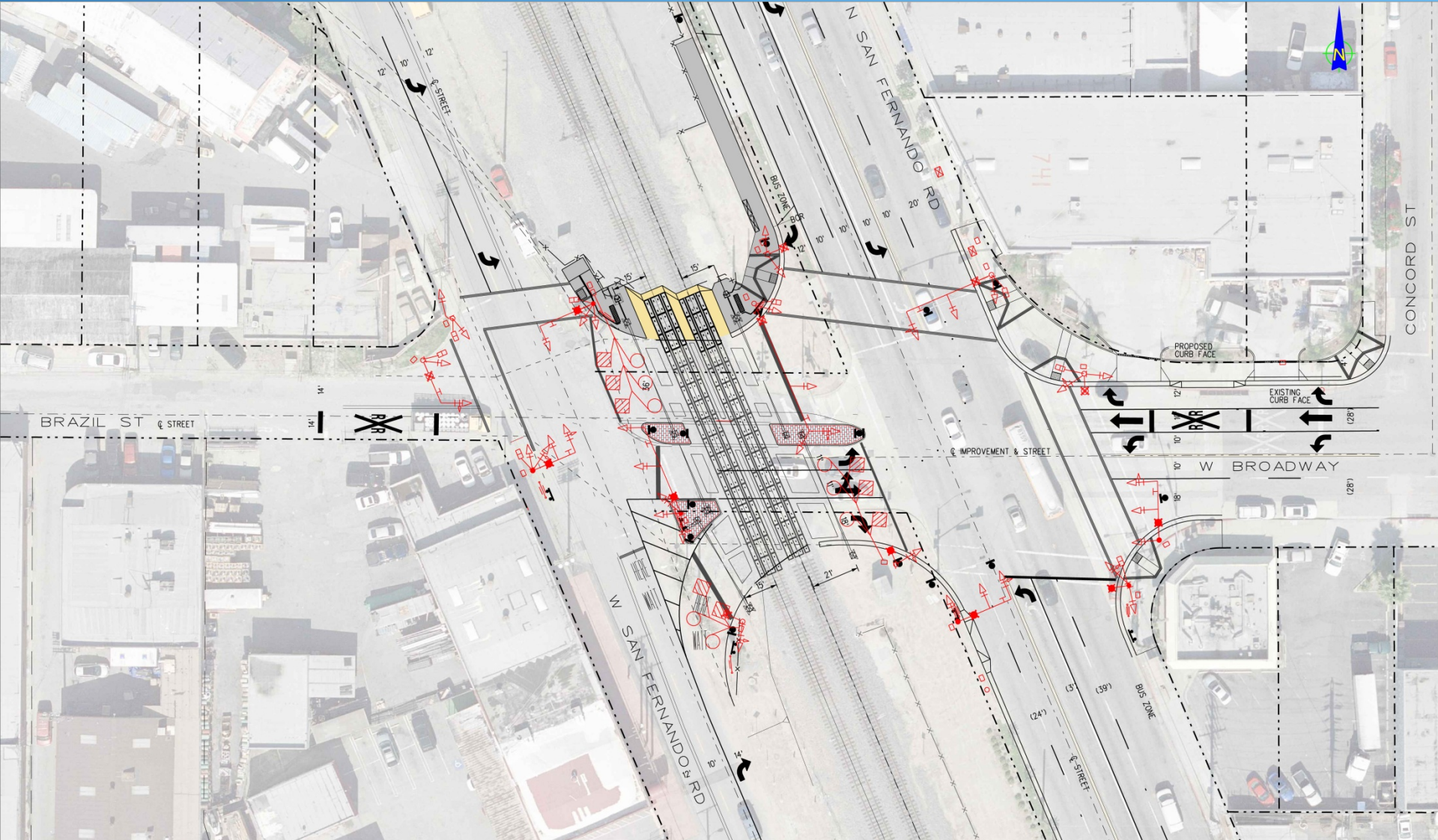
Broadway Brazil & Chevy Chase Railroad Crossing Improvements

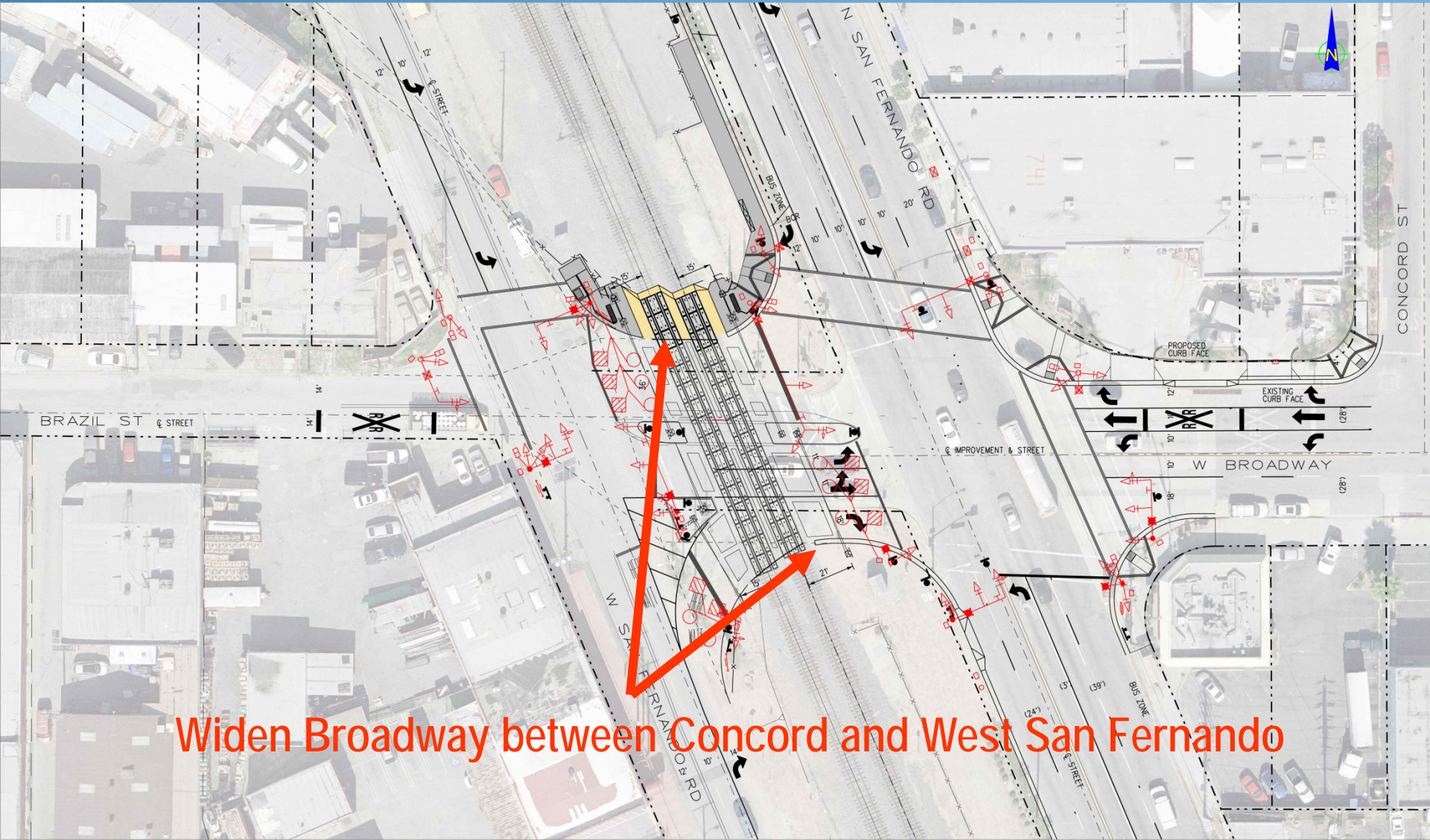
Community Outreach Meeting

November 08, 2012

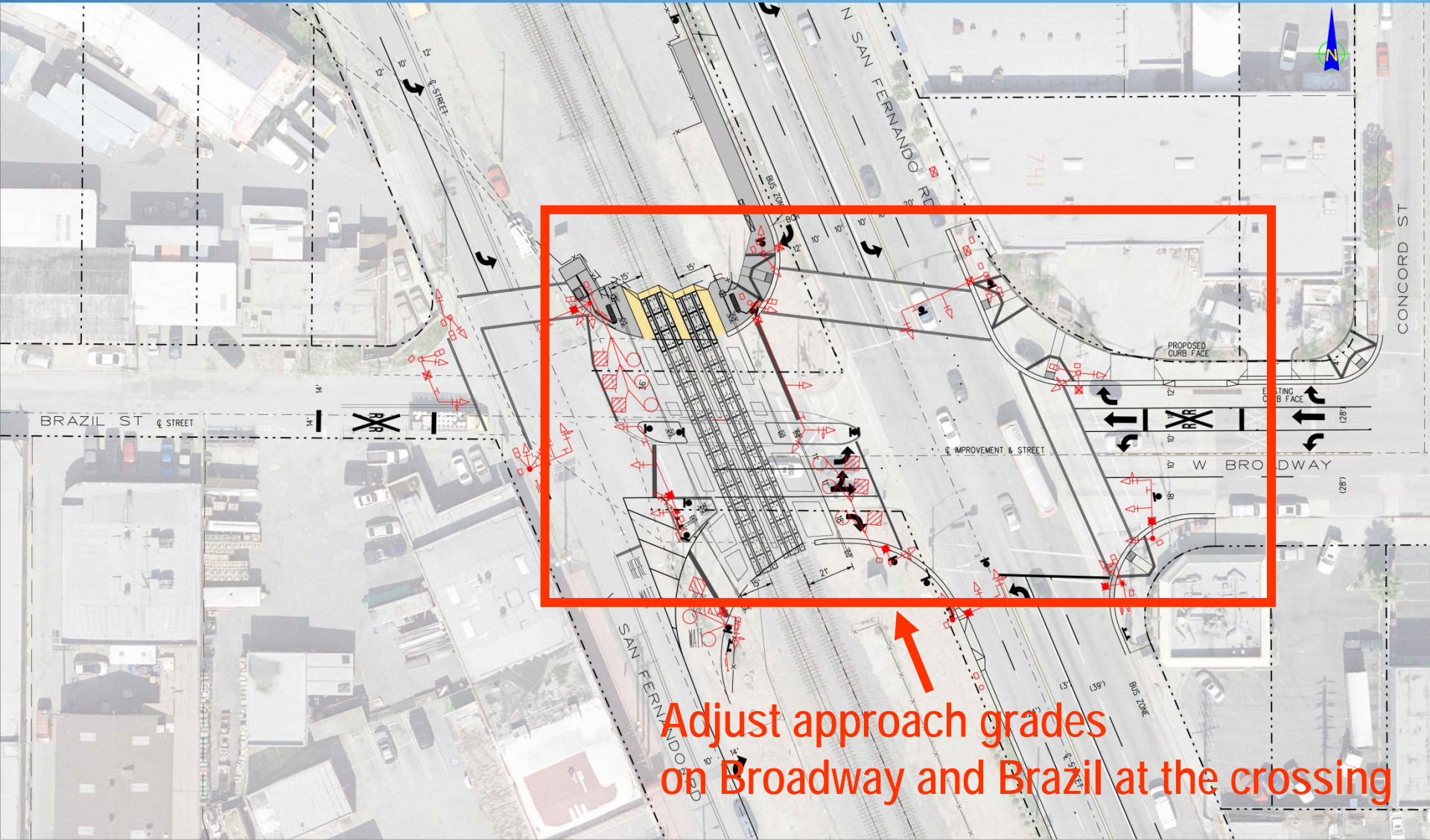
6:00 p.m.

Broadway Scope of Work

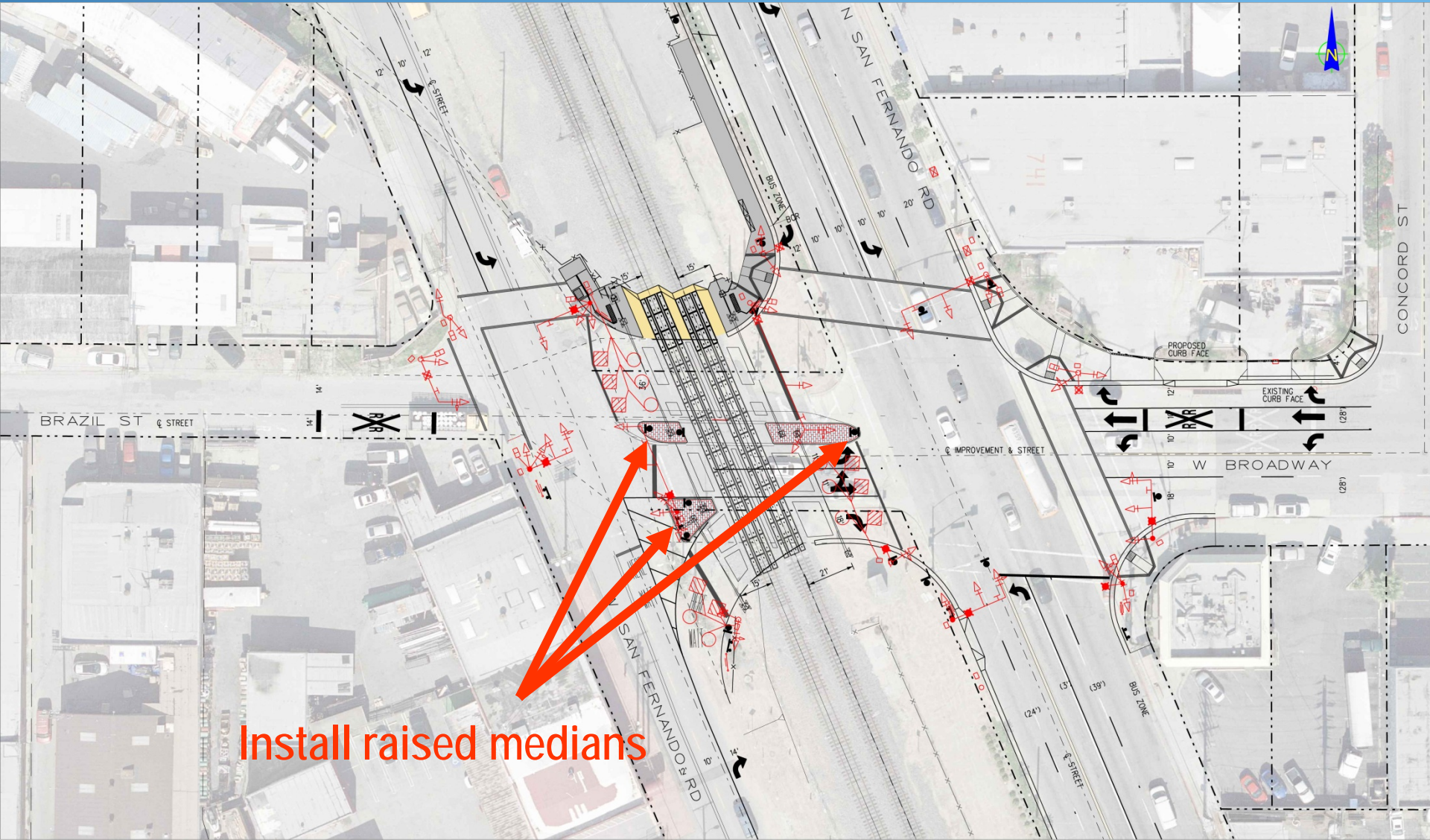




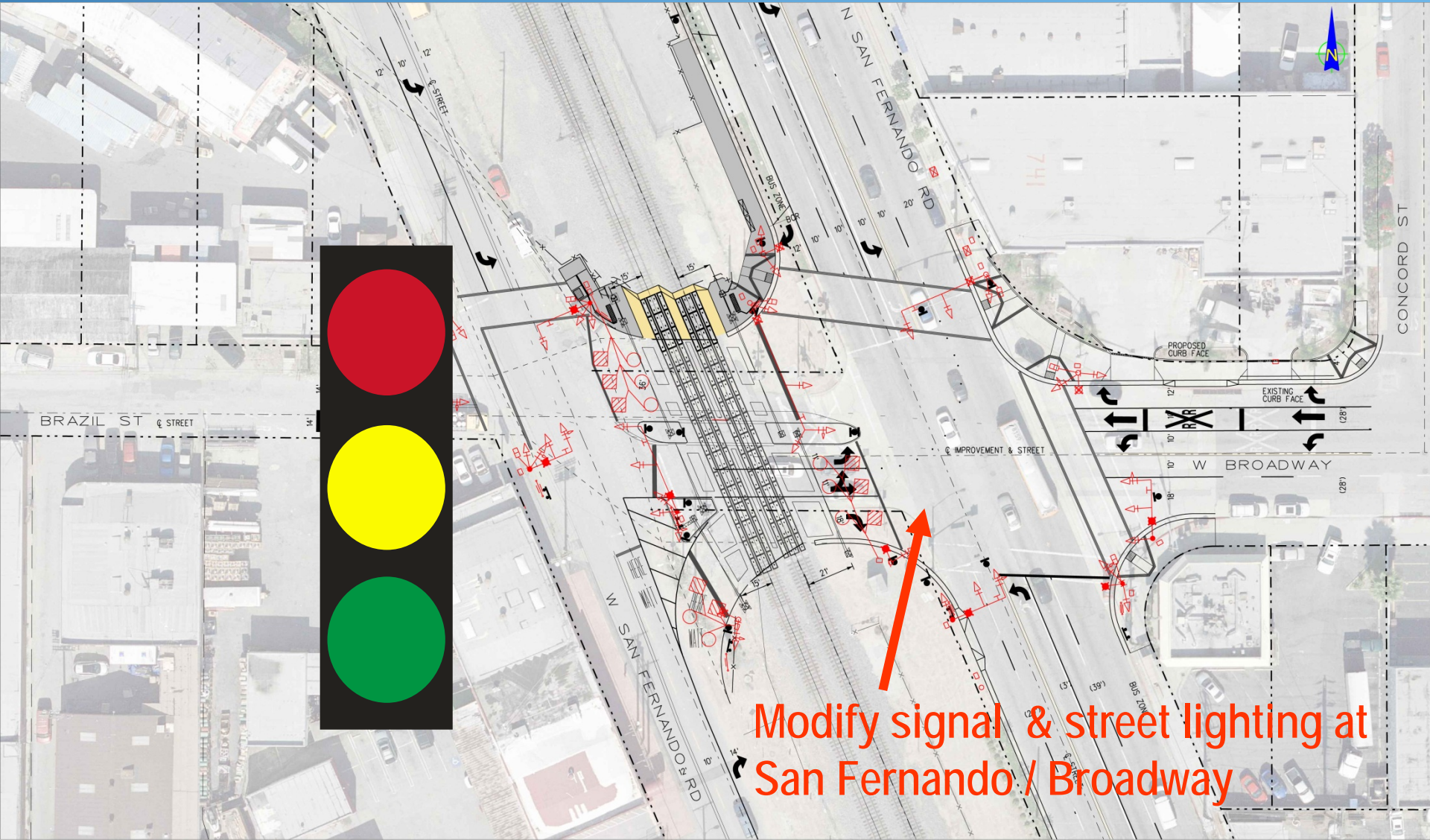
Widen Broadway between Concord and West San Fernando



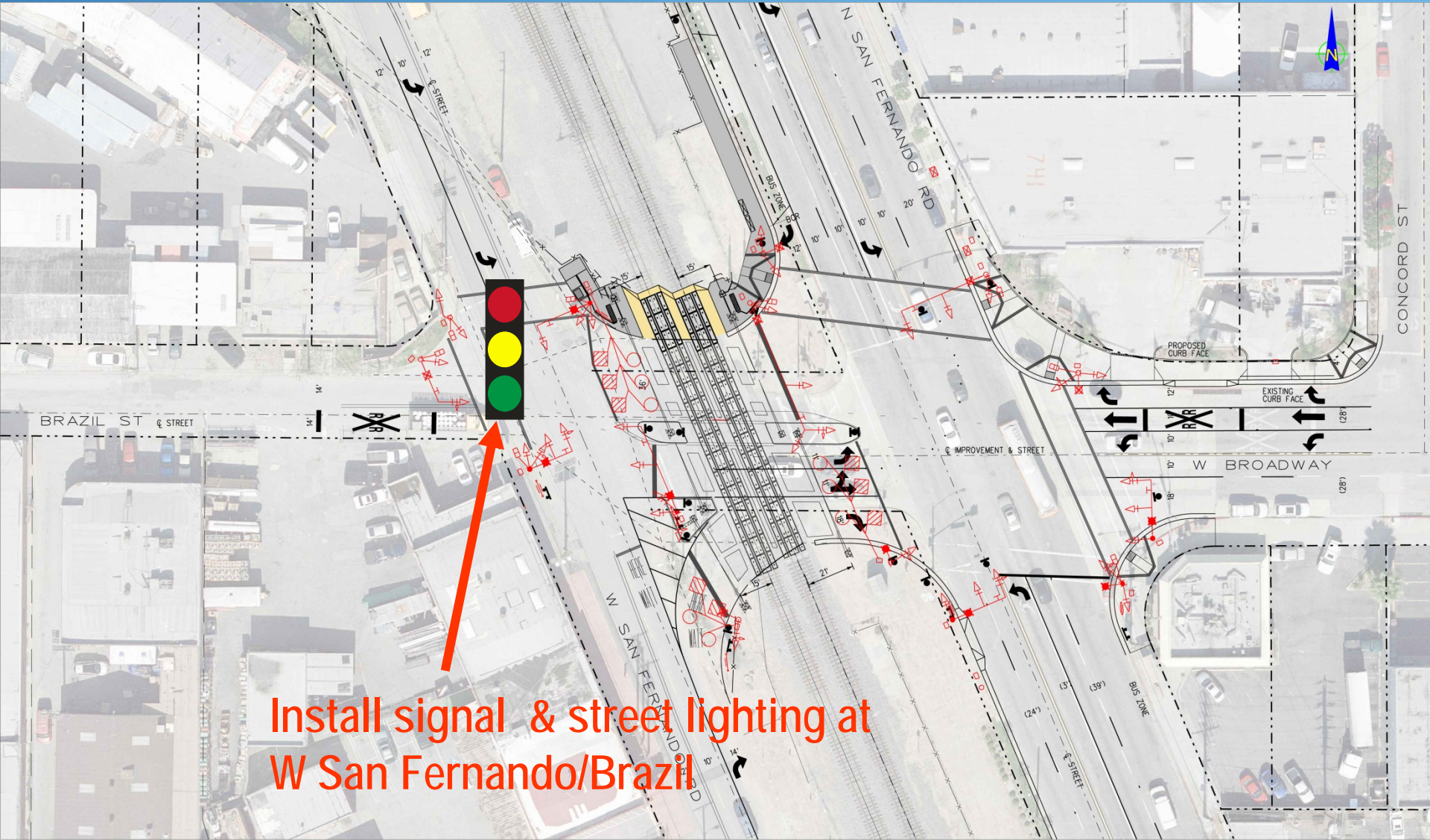
Adjust approach grades
on Broadway and Brazil at the crossing



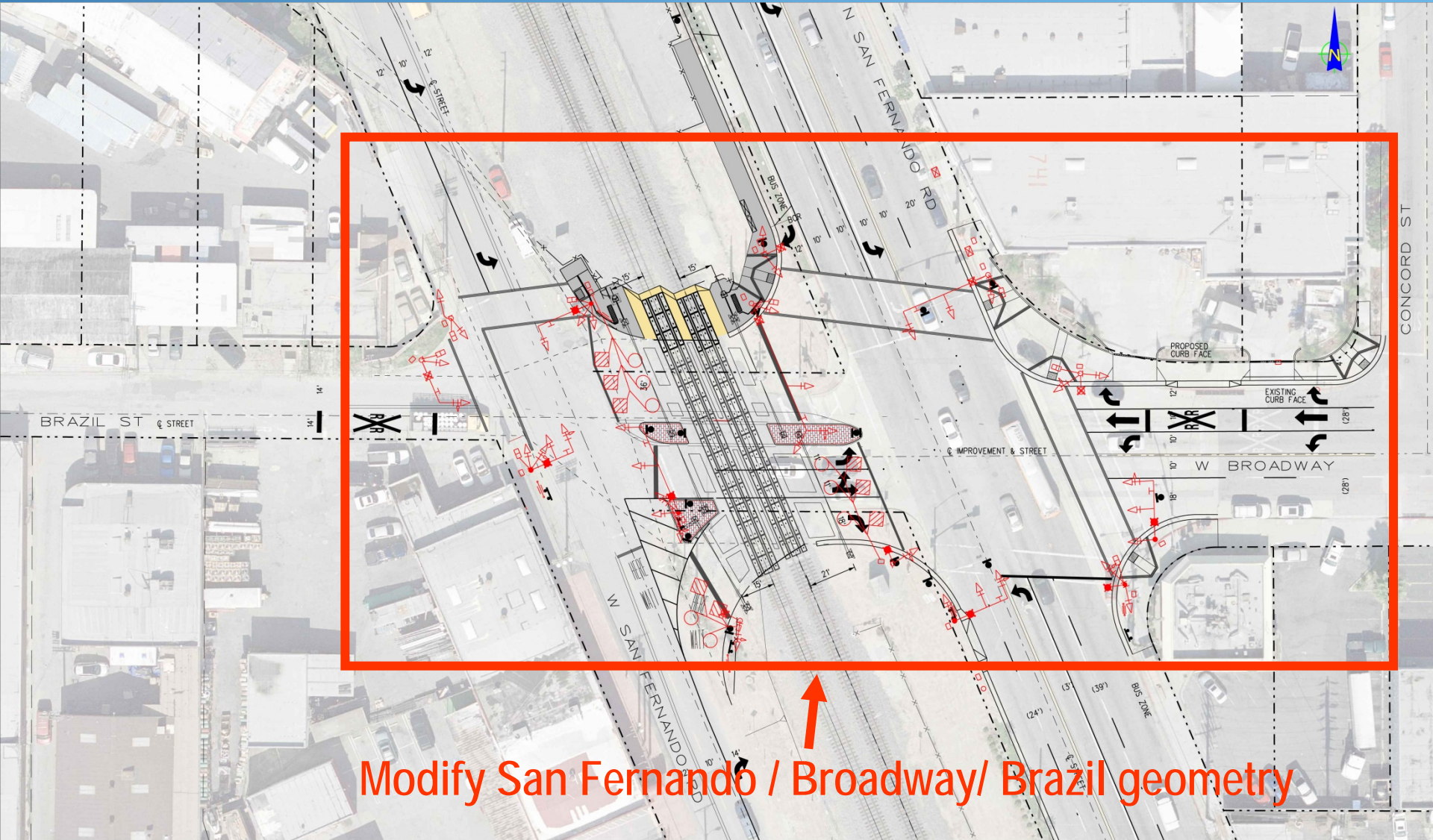
Install raised medians



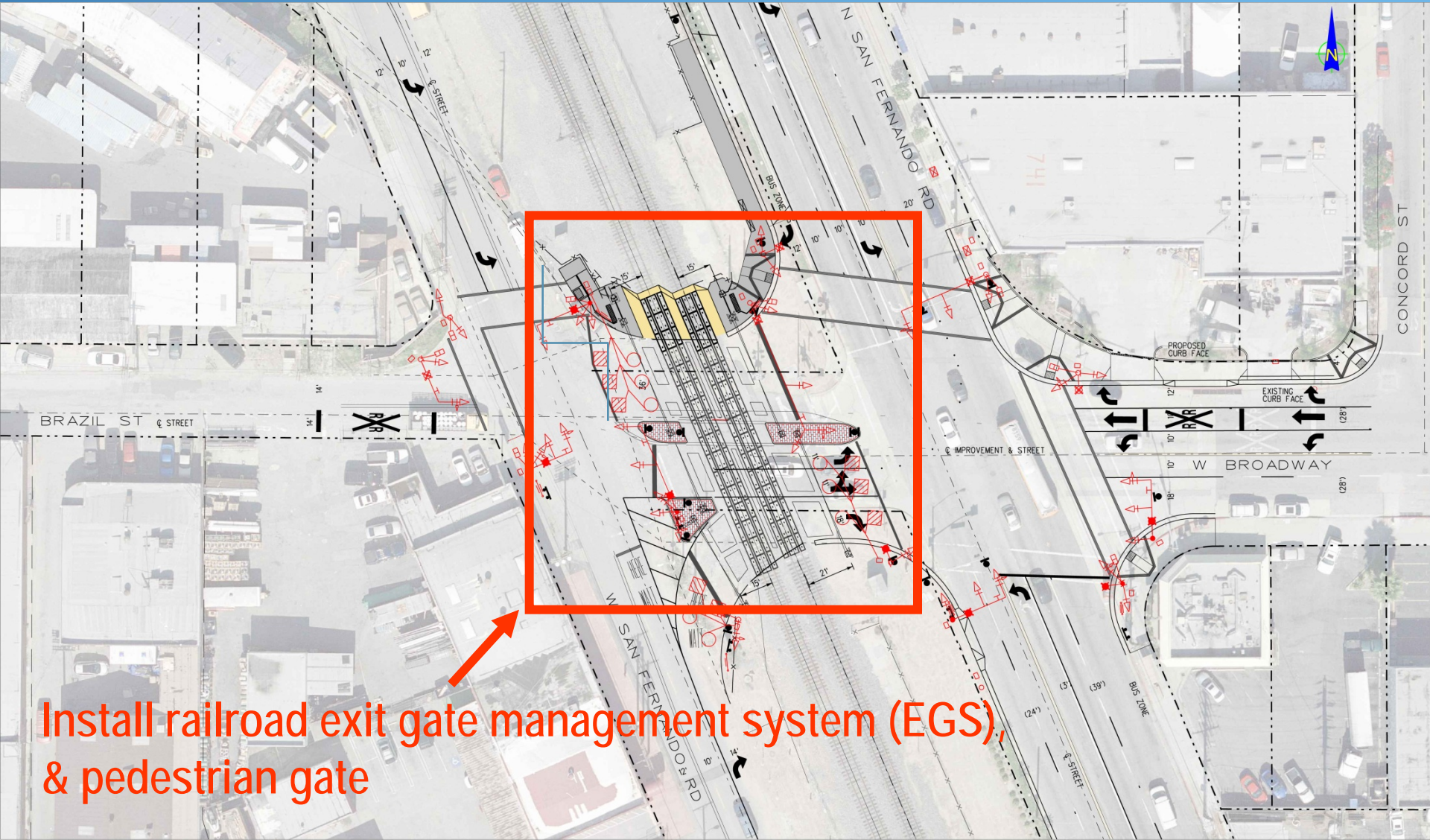
Modify signal & street lighting at San Fernando / Broadway



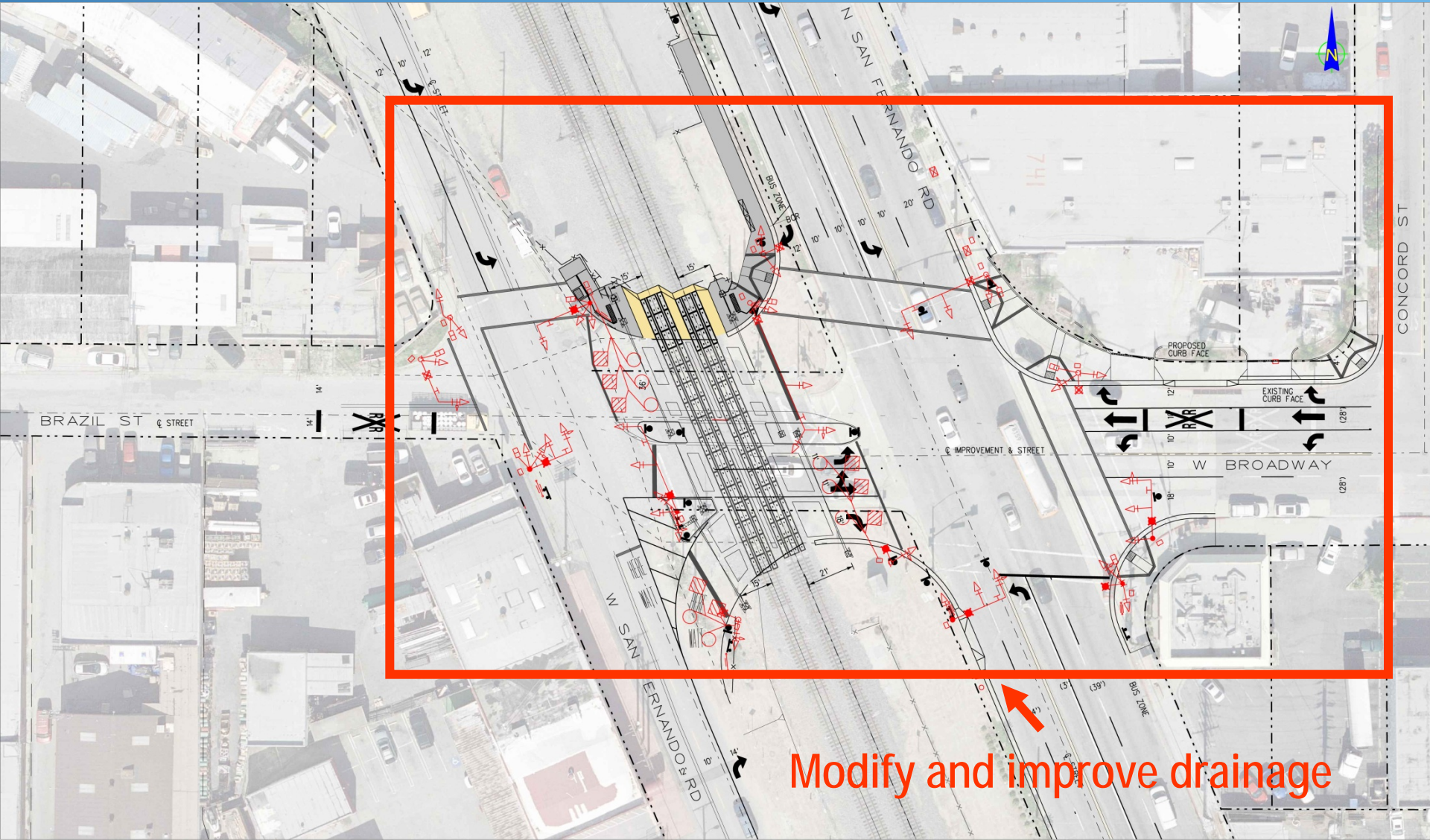
Install signal & street lighting at
W San Fernando/Brazil



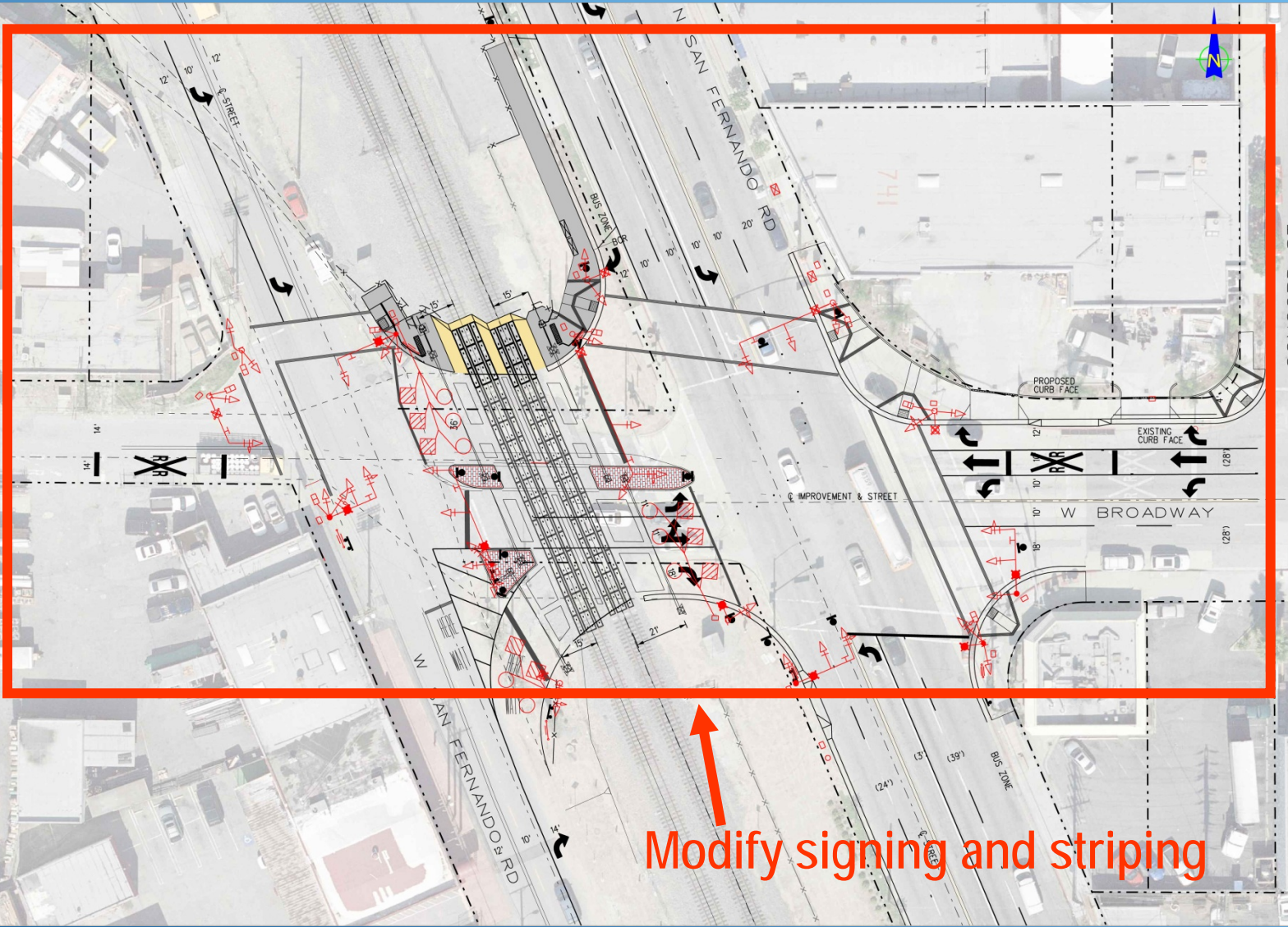
Modify San Fernando / Broadway/ Brazil geometry



Install railroad exit gate management system (EGS),
& pedestrian gate

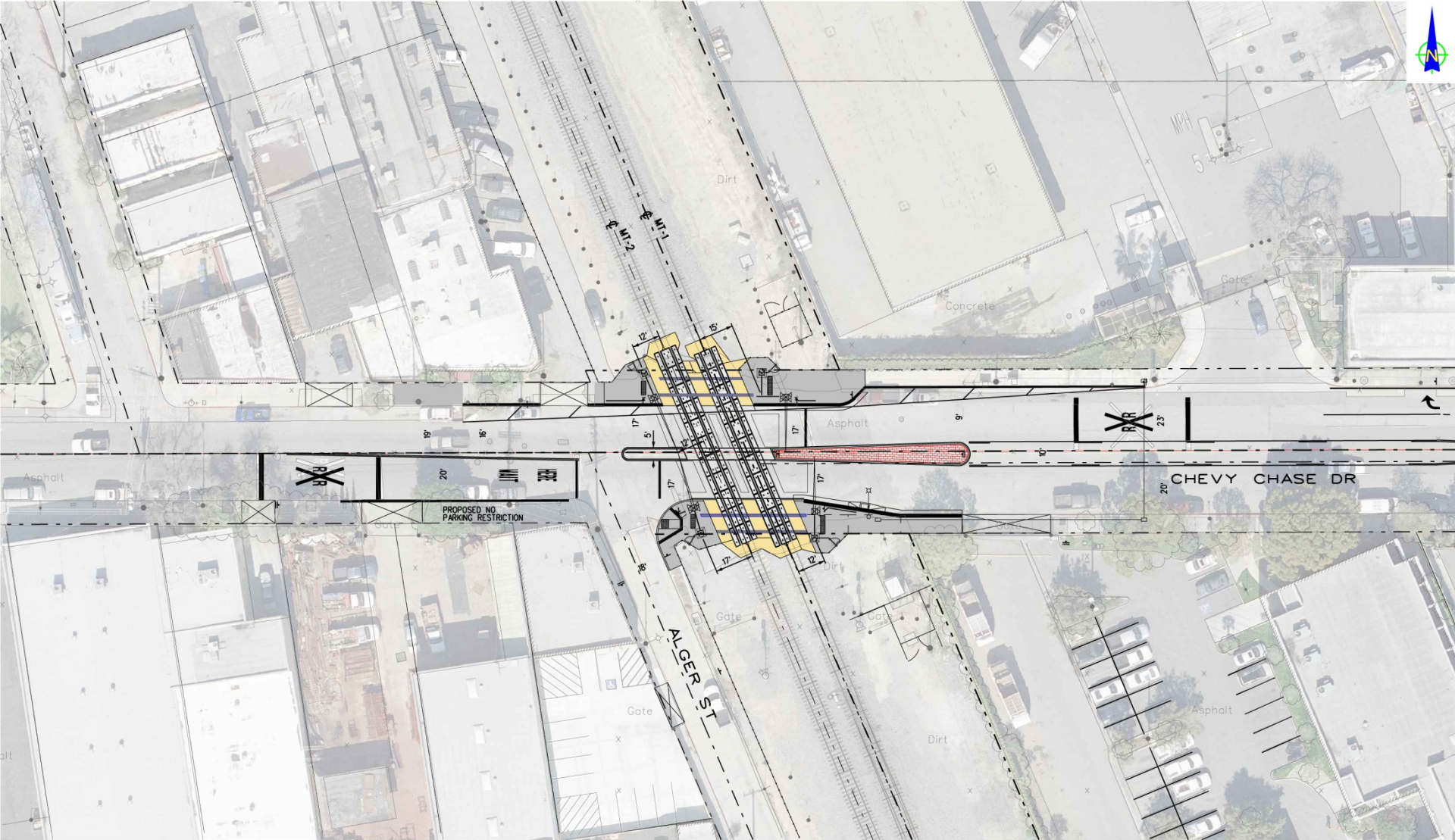


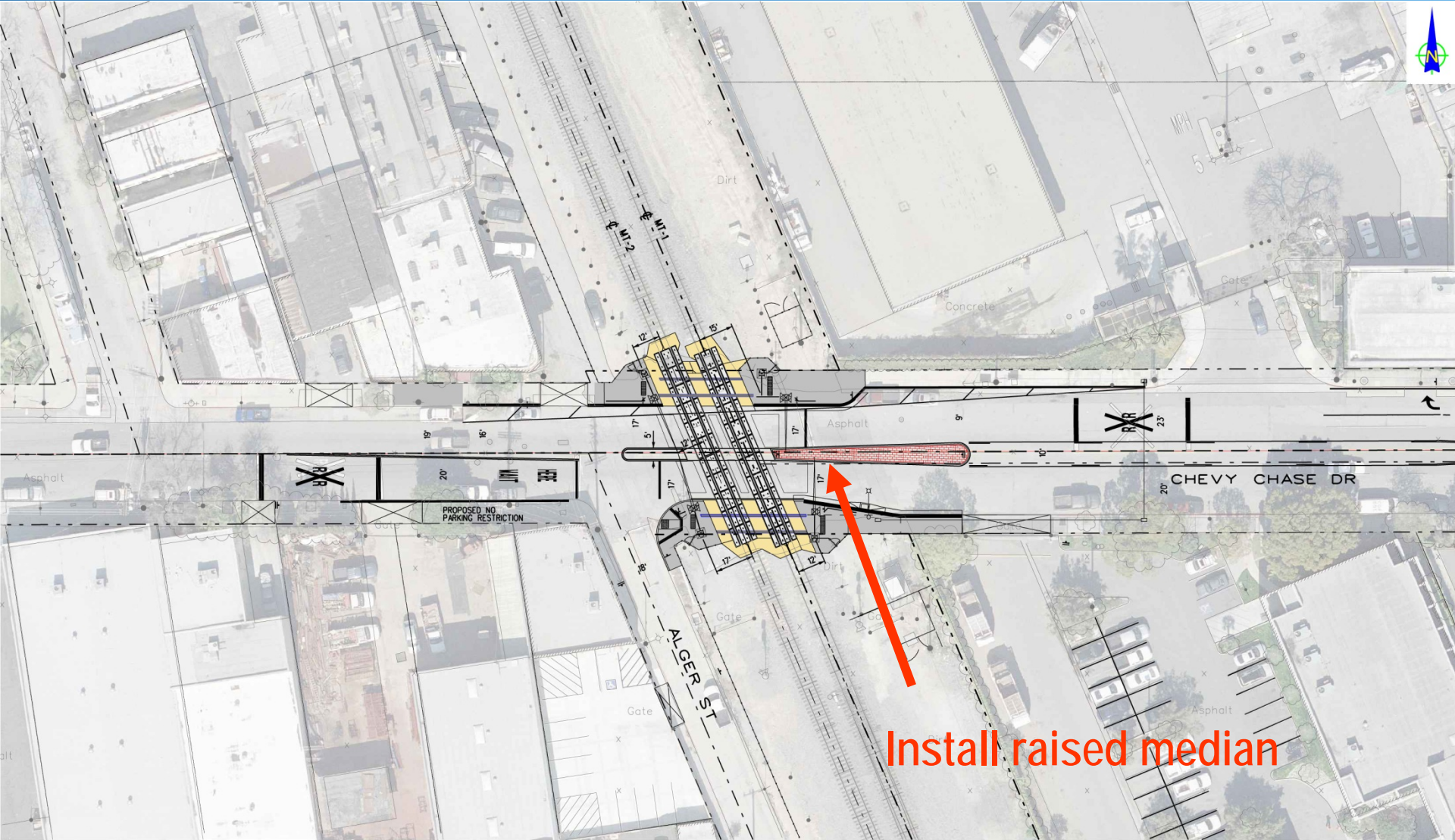
Modify and improve drainage



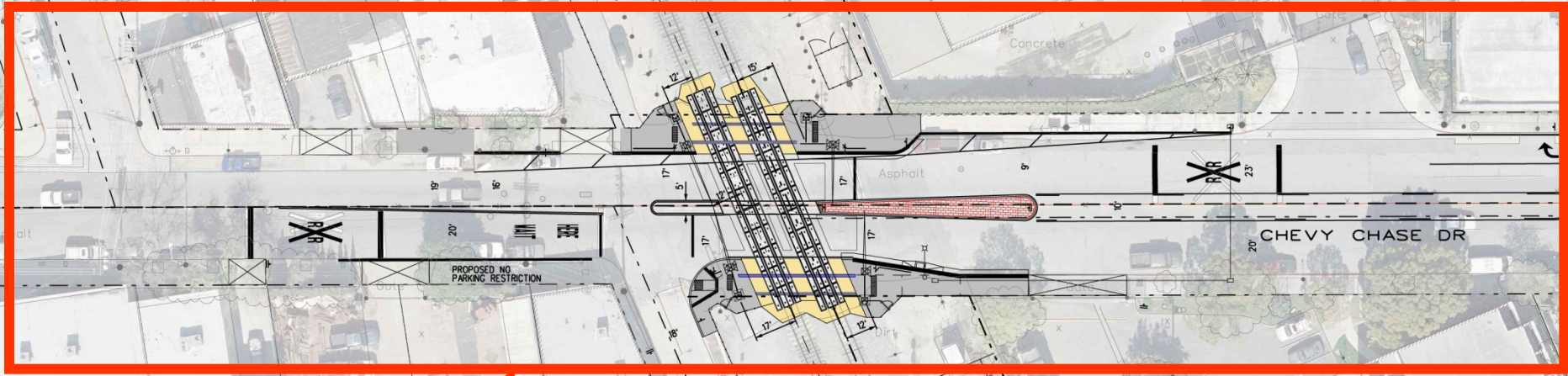
Modify signing and striping

Chevy Chase Drive Scope of Work



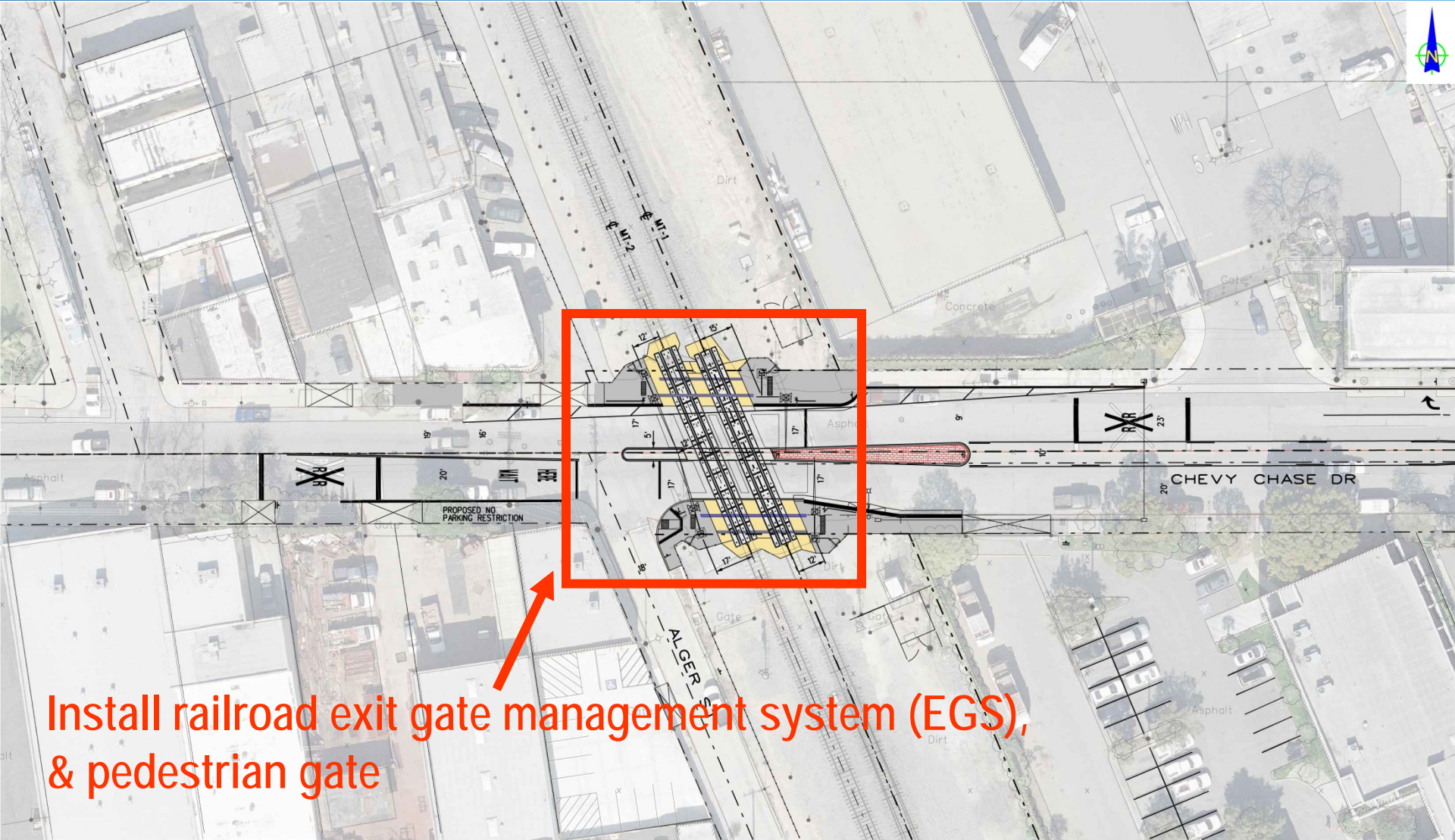


Install raised median

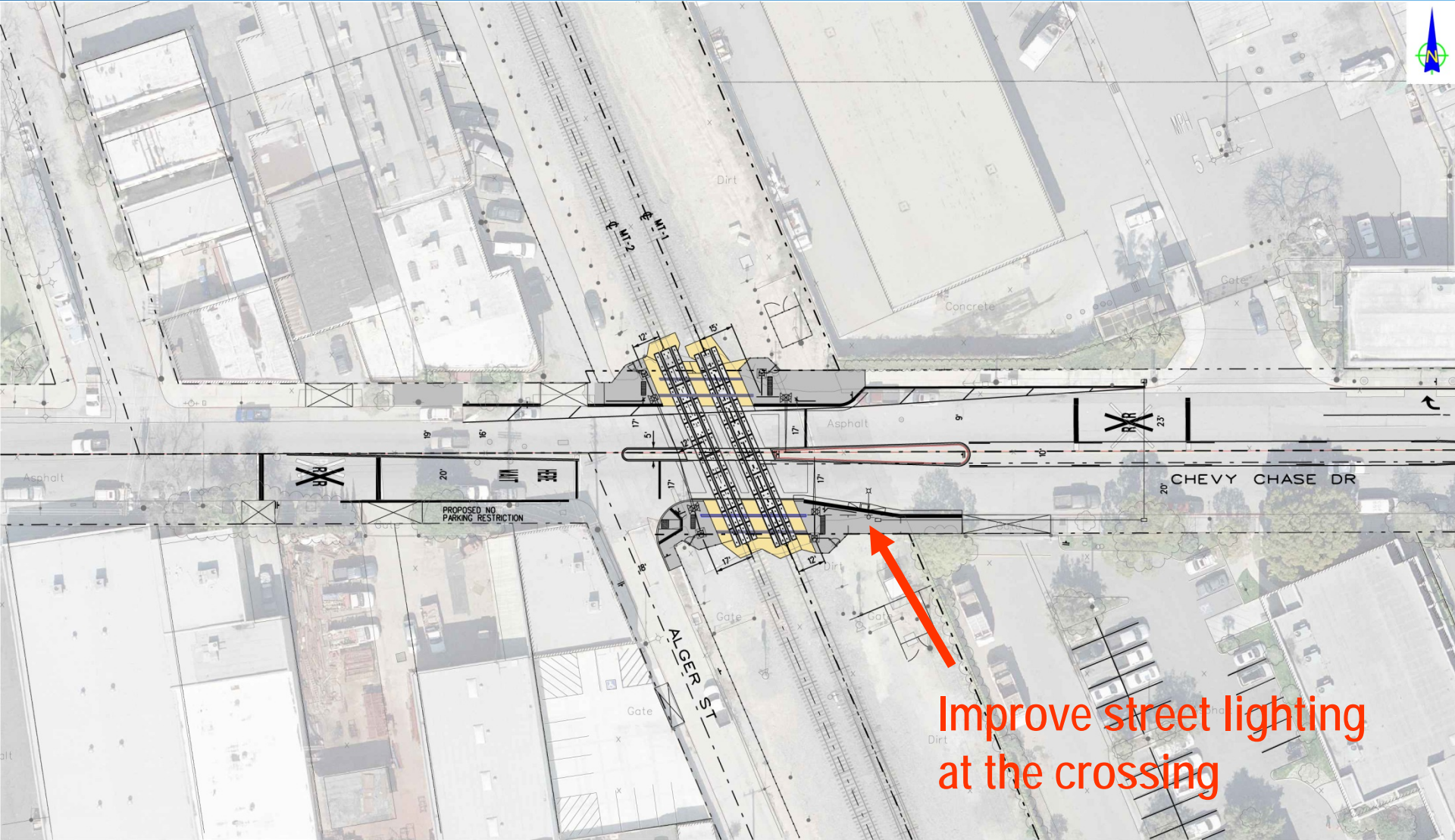


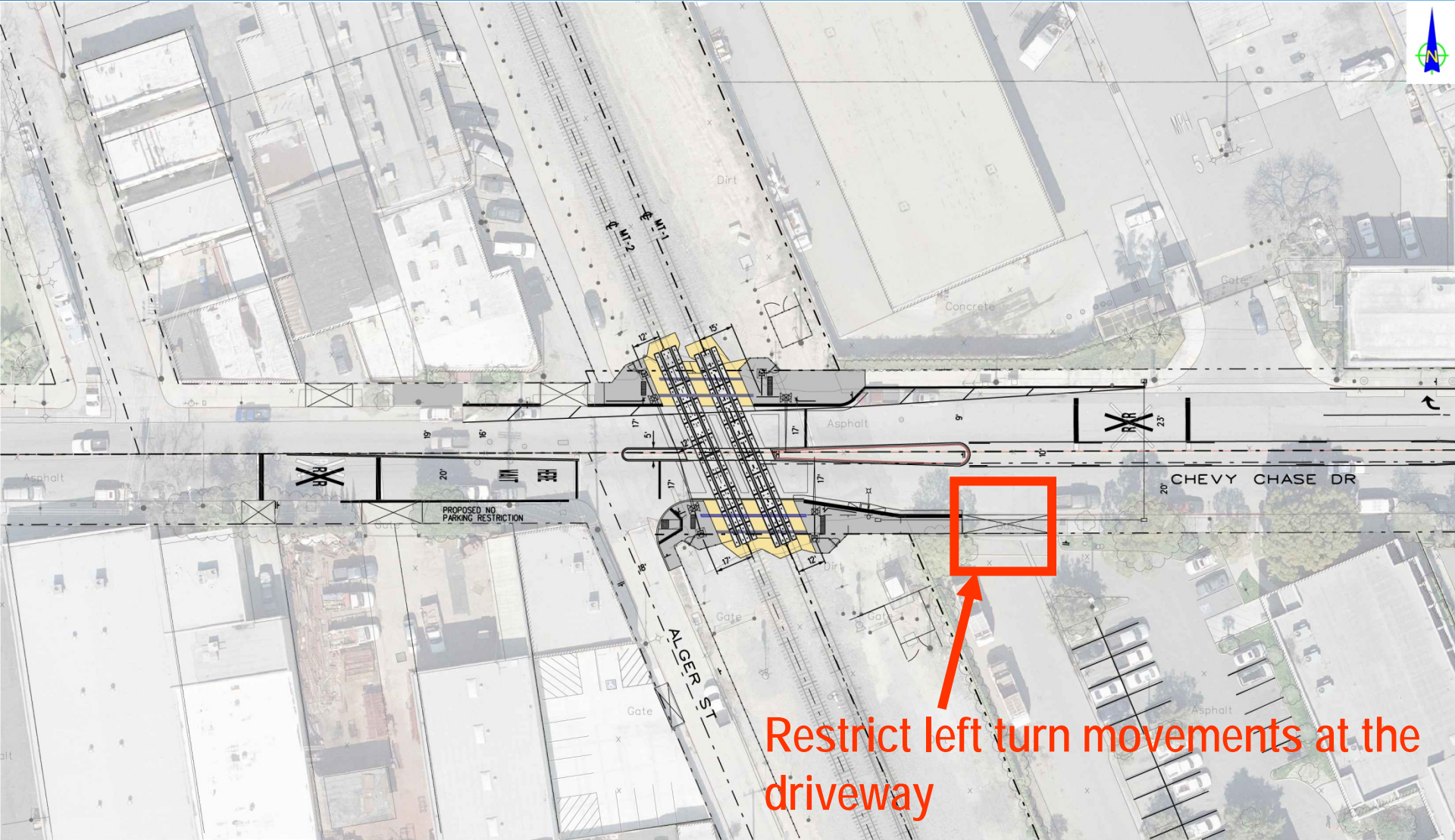
Modify signing and striping on Chevy Chase Drive





Install railroad exit gate management system (EGS),
& pedestrian gate





Restrict left turn movements at the driveway

Collateral Work

- Metrolink will install communication lines along railroad tracks
- Metrolink will install gates, railroad signals, and railroad control equipment
- Fiber optic companies may protect their existing utilities

Project Schedule

- Construction to begin in Fall/Winter of 2012/2013
- Project will be completed by end of 2013

During Construction

- Traffic may be delayed or detoured
- Parking may be prohibited
- Construction noise and dust may occur
- Access to some properties may be temporarily restricted
- Turning movements may be prohibited at intersections

During Construction

(Continued)

- Maintain minimum 1 travel lane in each direction on San Fernando
- Divide construction area into stages
- City & Metrolink representatives on site to ensure safety compliance
- City liaison officer available for questions

Questions & Concerns

Contact:

Wayne Ko, Project Manager
Public Works Engineering

Phone: 818.548.3945

Email:

PWConstructionProjects@ci.glendale.ca.us