

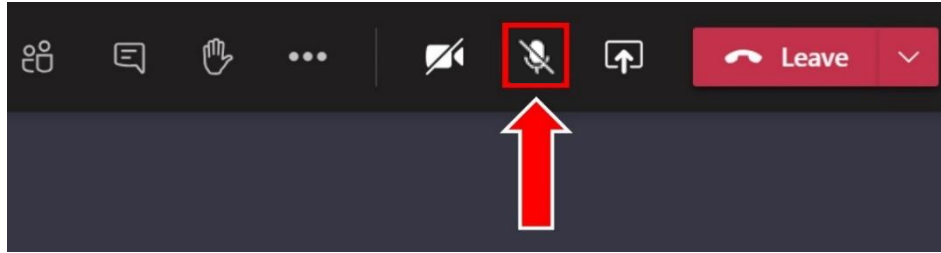


Glendale Continuum of Care (CoC) Committee Meeting

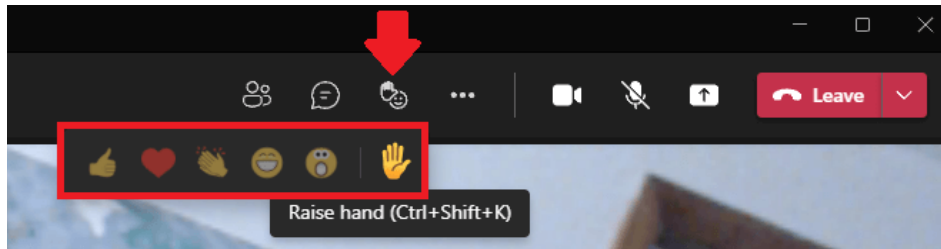
**May 23, 2023
10:30am – 11:30am**

Thank you for joining us!

1. Please mute yourself when you are not speaking.



2. Click the “Raise Hand” icon when you have a question or comment.



Agenda



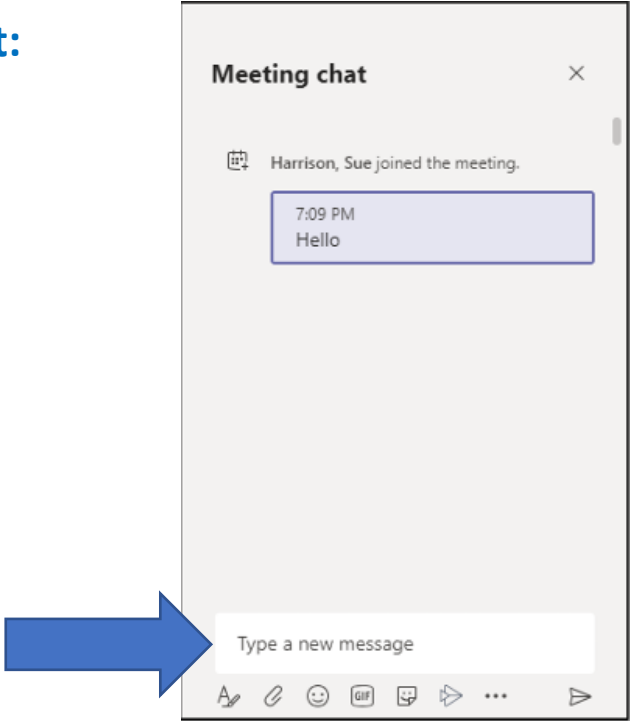
1. ROLL CALL
2. INTRODUCTION
3. UPCOMING EVENTS & ANNOUNCEMENTS
4. GLENDALE HOMELESS PROGRAM & FUNDING UPDATES
5. PUBLIC COMMENTS
6. ADJOURNMENT



ROLL CALL

Please type your information in the chat:

- 1. Your name
- 2. Your organization
- 3. Your email



- A. FY 2022 HUD CoC Scoring Breakdown
- B. Rent Increase Update Notice : AB 1482 – Tenant Protection Act
- C. Data-informed Response to Homelessness
- D. Glendale CoC Board Nomination



FY2022 CoC Competition Debriefing

2. CoC Scoring Summary (from FY 2022 CoC NOFO)

Scoring Category	Maximum Score (Points)	Your CoC Score (Points)
1B. Coordination and Engagement–Inclusive Structure and Participation	5	4.5
1C. Coordination and Engagement–Coordination with Federal, State, Local, Private, and Other Organizations	29	24.5
1D. Coordination and Engagement–Coordination with Federal, State, Local, Private, and Other Organizations–Continued	49	38.5
1E. Project Capacity, Review, and Ranking–Local Competition	30	27.5
2A. Homeless Management Information System(HMIS)–Implementation	9	8
2B. Point-in-Time (PIT) Count	5	5
2C. System Performance	59	49
3A. Coordination with Housing and Healthcare	14	2
Total CoC Application Score*	200	159

3. Overall Scores for all CoCs

Highest Score for any CoC	188.75
Lowest Score for any CoC	53.5
Median Score for all CoCs	154.5
Weighted Mean Score** for all CoCs	162.25

15	1D-2. Housing First–Lowering Barriers to Entry.	10	10
16	1D-2a. Project Evaluation for Housing First Compliance.		
	1D-3. Street Outreach–Scope.	3	3
17	1D-5. Rapid Rehousing–RRH Beds as Reported in the Housing Inventory Count (HIC).	10	0
18	1D-7. Increasing Capacity for Non-Congregate Sheltering.	1	1
	1D-8. Partnerships with Public Health Agencies–Collaborating to Respond to and Prevent Spread of Infectious Diseases.		
19	1D-8a. Collaboration With Public Health Agencies on Infectious Diseases.	5	5



FY2022 CoC Competition Debriefing

1		Max Score	Glen-dale	Imperial County	Kern County	Long Beach	Los Angeles	Orange County	Pasa-dena	Riverside County	San Ber-nardino	San Diego County	San Luis Obispo	Santa Barbara	Ventura County
2	Scoring Category														
3	1B. Coordination and Engagement–Inclusive Structure and Participation	5	4.5	3.75	3.5	4.5	5	5	5	4.75	5	5	4.5	5	3.5
4	1C. Coordination and Engagement–Coordination with Federal, State, Local, Private, and Other Organizations	29	24.5	20.5	19.5	24	26.5	25.5	28	27	26.5	27	25.5	28.5	24.5
5	1D. Coordination and Engagement–Coordination with Federal, State, Local, Private, and Other Organizations–Continued	49	38.5	43	44.5	48	48	43.5	49	36.5	39	48	34	48	36.5
6	1E. Project Capacity, Review, and Ranking–Local Competition	30	27.5	24.5	25.5	28.5	29.5	27.5	30	28.5	30	29	30	27	28.5
7	2A. Homeless Management Information System	9	8	7.5	8	4.5	7.5	9	9	9	8	9	8	8	5.5
8	2B. Point-in-Time Count	5	5	5	5	5	5	5	5	5	5	5	3	5	5
9	2C. System Performance	59	49	45	39	35	36	40	39	42	30	29.5	38	45	40.5
10	3A. Coordination with Housing and Healthcare	14	2	0	7	0	14	2	14	14	7	7	14	9	5
11	Total CoC Application Score*	200	159	149.25	152	149.5	171.5	157.5	179	166.75	150.5	159.5	157	175.5	149
12	*The total does not include bonus scores.														



FY2022 CoC Competition Awards Projects Report

CA-612 - Glendale CoC

Ascencia Housing Now Program FY2022	CoC	\$423,713
Ascencia Scattered Site Permanent Supportive Housing Program FY2022	CoC	\$248,997
CES Reallocation FY2022	CoC	\$620,951
Chester Street Permanent Supportive Housing Program FY2022	CoC	\$88,382
CoC Planning Project FY2022	CoC	\$79,840
Consolidated Grant Shelter Plus Care FY2022	CoC	\$876,012
Family Promise of Verdugos Rapid Re-Housing Program FY2022	CoC	\$115,776
Glendale HMIS Project FY2022	CoC	\$88,577
Next Step Permanent Supportive Housing FY2022	CoC	\$198,923

CA-612 Total :	\$2,741,171
-----------------------	--------------------



AB 1482 – Tenant Protection Act: Summary of Key Provisions

ANNUAL CAP ON RENT INCREASES EXPLAINED

AB 1482 Caps Annual Rent Increases at 5% Plus Inflation. Effective Jan. 1, 2020, AB 1482 caps rent increases statewide at 5% plus local inflation per year for the next 10 years, unless lawmakers vote to extend it.

- The current rate of inflation (CPI) which is adjusted every April is 3.8%. Therefore, the maximum amount rents can be increased is 8.8% per 12-month period starting August 1, 2023.
- Rent may not be increased more than twice over a 12-month period (total sum of such increases not to exceed the annual rent cap).

THE FOLLOWING UNITS ARE EXEMPT

- Affordable Housing Units
- Units 15 years old or newer (2008 and newer)
- Single Family homes and Condos
- Owner-occupied duplexes



Data-informed Responses to Homelessness



2023 Homeless
Count Highlights

Live HMIS Data
Dashboard
Rollout



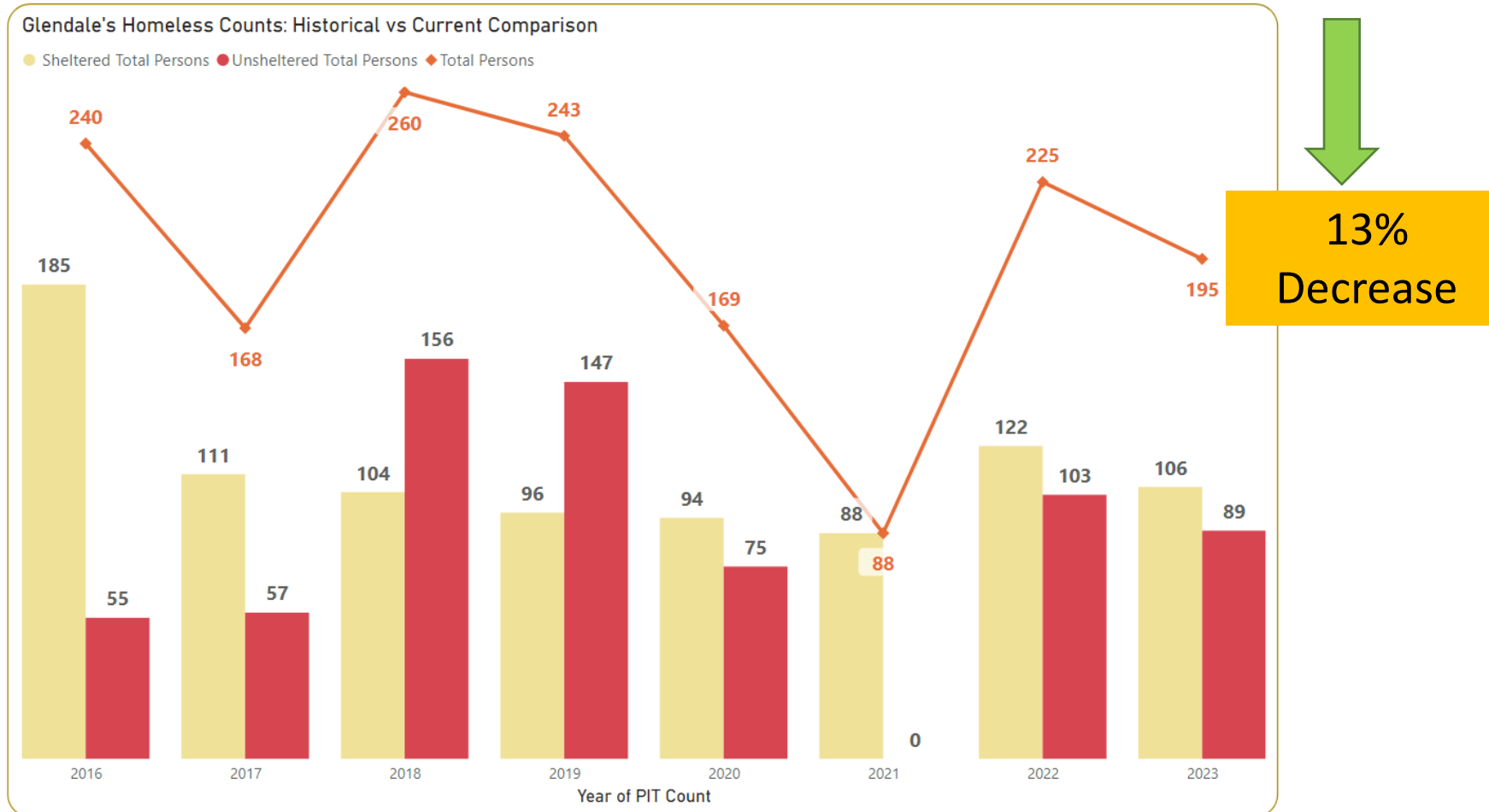
Glendale Homeless Count Longitudinal Summary

2022 Count

225 unduplicated persons
(Sheltered and Unsheltered)

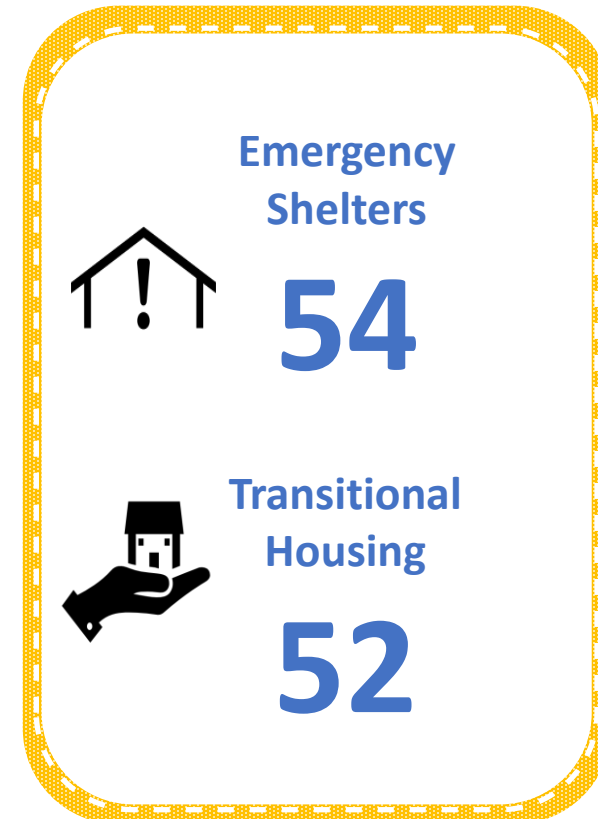
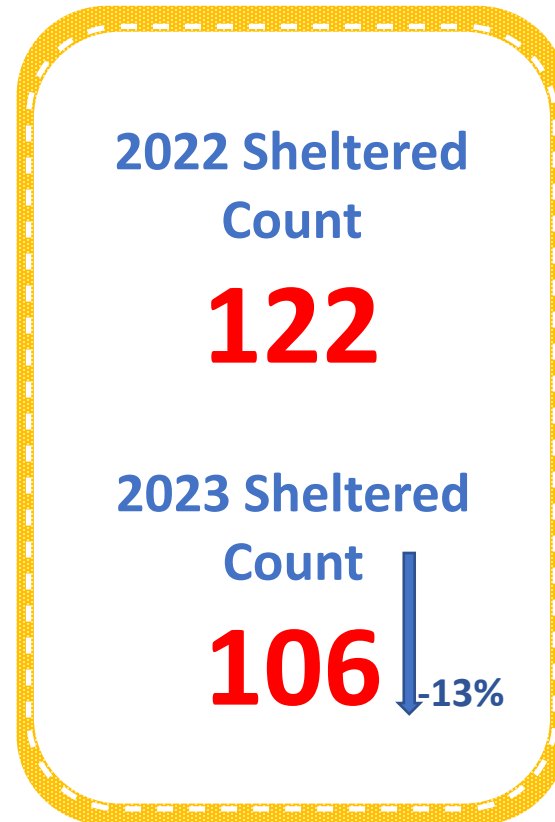
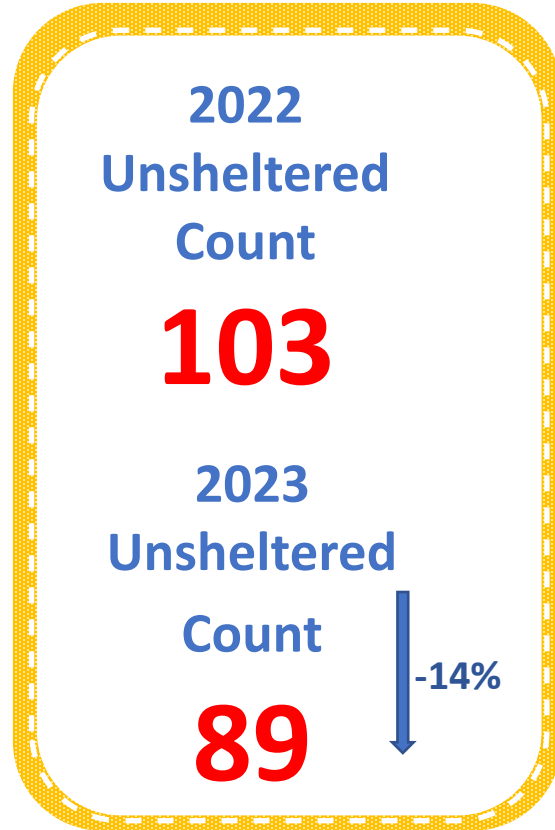
2023 Count

195 unduplicated homeless persons
(Sheltered and Unsheltered)



Key Findings

Of the 195 unduplicated homeless persons enumerated, 89 were unsheltered (46%) and 106 sheltered (54%).



Does not include: Doubled up or couch surfing At-risk of homelessness



Homeless Services - Key Performance Indicators

 [Print](#)  [Feedback](#)  [Share & Bookmark](#) Font Size:  

Glendale CoC Data/System Performance Reports

Glendale CoC Homeless Services System Indicators Dashboard +

Homeless Programs Data Performance -

The dashboard shows trends in data received from homeless service providers about people experiencing homelessness throughout the year in Glendale. This information includes living situations, demographics, the number of persons entering and exiting homelessness; and outcomes on whether people are housed, sheltered, or continue to experience homelessness. This information complements data captured in the biennial Point-in-Time (PIT) Count, which documents both sheltered and unsheltered homeless populations. Please see the Appendix A beneath the dashboard for clarification regarding any of the tiles.

[2022 Glendale CoC Performance Dashboard](#)



Program & Funding Updates

AGENDA #4

- Glendale's Homeless Crisis Response System



ESG-CV Updates

- All program funds for Projects (Street Outreach, Emergency Shelter, Rapid Rehousing, Homelessness Prevention) must be expended by: **September 30, 2023**

ESG Updates

- All program funds for Projects (Emergency Shelter & Homelessness Prevention) must be expended by: **June 30, 2023**



Federal

Continuum of Care (CoC)

Emergency Solutions Grant (ESG)

ESG CARES Act (ESG-CV1 & 2)

Emergency Housing Vouchers (EHV)

State

California Emergency Solutions & Housing (CESH)

Homeless Housing, Assistance and Prevention (HHAP)
Round 3 & 4 Request for Proposals

County

Measure H

Local

Measure S



Emergency Housing Voucher (EHV) Update

Vouchers Allocated	225
Vouchers Issued	217
Leased Up	126
Referred	238
Absorbed by Other PHA	39
Canceled	35
Terminated	2
Vouchers Searching	30
Vouchers Available	69



Public Comments

**AGENDA
#5**



Adjournment

AGENDA

#6



#MyGlendale

glendaleca.gov/homeless-services

