

Please consider the environment before printing this report



# GREENER GLENDALE



Cover photo by Gary Edstrom, 2004



## 2010 REPORT

A report of Glendale, California's plans and progress in becoming more ecologically, socially, and economically friendly



## Glendale's Green History

The City of Glendale has long been committed to doing our part to promote sustainable living through eco-friendly programs and projects.

From Glendale Water & Power's energy efficiency, conservation, and renewable energy programs, to the City's outstanding recycling program, promotion of green building materials to developers, bringing fresh organic produce to our residents at farmers' markets, and performing sustainability outreach and education to residents, Glendale has proven its long standing commitment to the environment.

Since the early 1990s, the City has implemented numerous environmentally friendly programs, including, but not limited to:

- Energy and water saving measures in City facilities and the community at large
- "Greening" the City's bus and vehicle fleet
- Expanding the municipal and community recycling programs

## Toward a Greener Glendale

In an effort to expand the City's Green programs to fit into the framework of worldwide efforts, the City is developing the *Greener Glendale Plan*.

The *Greener Glendale Plan* is a long term sustainability plan for Glendale. *Sustainability* is a broad concept referring to the means of sustaining society in the long term by meeting current ecological, social, and economic needs while ensuring future generations can meet theirs.

## UN Urban Environmental Accords

The City is using the United Nations Urban Environmental Accords (UNUEAs) as a framework for organizing our ongoing sustainability efforts.

The UNUEAs are a product of United Nations World Environment Day 2005, where mayors from around the world signed onto the accords, which set out 21 specific actions for sustainable urban living. By signing these accords, cities commit their best efforts to achieve as many of the 21 actions as possible by year 2012.

The UNUEAs are organized into seven themes, with three sustainability Actions for each.

-  ENERGY  
*Renewable Energy • Energy Efficiency • Climate Change*
-  WASTE REDUCTION  
*Zero Waste • Manufacturer Responsibility • Consumer Responsibility*
-  URBAN DESIGN  
*Green Building • Urban Planning • Low-Income Neighborhoods*
-  URBAN NATURE  
*Parks • Habitat Restoration • Wildlife*
-  TRANSPORTATION  
*Public Transportation • Clean Vehicles • Reducing Congestion*
-  ENVIRONMENTAL HEALTH  
*Toxics Reduction • Healthy Food Systems • Clean Air*
-  WATER  
*Water Access & Efficiency • Source Water Conservation • Waste Water Reduction*

By 2012, participating cities will be rated based on the number of actions they have achieved. Cities will be awarded a star status based on the number of Actions they have implemented.

- 19-21 Actions = 4 Stars
- 15-18 Actions = 3 Stars
- 12-17 Actions = 2 Stars
- 8-11 Actions = 1 Star

Based on a review of Glendale's existing sustainability programs, we have achieved six of eight actions needed to obtain 1-Star status.

**To achieve further Actions and progress toward our goal of increased sustainability, it will require everyone in Glendale working together and doing our part to make our community an even better place to live.**

**While reading this document, find ways you can personally contribute to helping realize the goal of a Greener Glendale.**



## How This Document Is Organized

The 21 Actions of the UNUEAs are addressed one by one on the following pages. Each page covers one environmental topic and three Actions within that topic.

A checkbox indicates whether or not we have achieved the Action. A list of existing programs and efforts in regard to the Action follows. Finally, Recommended Actions for the City to take, and suggested actions individuals in Glendale can take are listed.

## Summary of Our Progress

| United Nations Urban Environmental Actions         | Status  |
|--|---|
| 1. Renewable Energy. . . . .                       |    |
| 2. Energy Efficiency . . . . .                     |    |
| 3. Climate Change. . . . .                         |    |
| 4. Zero Waste. . . . .                             |    |
| 5. Manufacturer Responsibility. . . . .            |    |
| 6. <b>Consumer Responsibility</b> . . . . .        |    |
| 7. Green Building. . . . .                         |    |
| 8. Urban Planning. . . . .                         |    |
| 9. <b>Low-Income Neighborhoods</b> . . . . .       |   |
| 10. Parks. . . . .                                 |  |
| 11. Habitat Restoration. . . . .                   |  |
| 12. <b>Wildlife</b> . . . . .                      |  |
| 13. <b>Public Transportation</b> . . . . .         |  |
| 14. Clean Vehicles. . . . .                        |  |
| 15. Reducing Congestion. . . . .                   |  |
| 16. Toxics Reduction. . . . .                      |  |
| 17. Healthy Food Systems. . . . .                  |  |
| 18. Clean Air. . . . .                             |  |
| 19. <b>Water Access &amp; Efficiency</b> . . . . . |  |
| 20. Source Water Conservation. . . . .             |  |

Total Completed: 6  Achieved  
Total In-Progress: 15  In Progress



## Renewable Energy

1. Adopt and implement a policy to increase the use of renewable energy to meet ten percent of the city's peak electric load within seven years.

 In Progress

### City Renewable Energy Portfolio

The City adopted a Renewable Portfolio Standard in 2004, calling for 20% of the City's electric power sales to come from renewable energy sources by 2017.

We have already achieved this goal. Currently, over 20% of Glendale's power is generated by clean, renewable, and alternative sources.



## Reduce Energy Consumption

2. Adopt and implement a policy to reduce the city's peak electric load by ten percent within seven years through energy efficiency, shifting the timing of energy demands, and conservation measures.

 In Progress

### Smart Grid

Glendale will switch to a Smart Grid system by August 2012, which will increase options for timing of energy demands, encourage energy efficiency, and result in considerable energy savings over the next 15 years.

### Smart Home Rebates

Glendale Water & Power administers the Smart Home Energy & Water Savings Rebates program, which resulted in 265,000 kWh saved in just the last year.

### Home Energy Report

Glendale Water & Power sends a detailed, bi-monthly Home Energy Report to residential customers with an individualized and comprehensive overview of their energy usage and access to online tools and the GWP call center. The program has resulted in an approximate savings of 1.8 million kWh.

### Green Allowance Program

Glendale Water & Power administers the Green Allowance program, an online program that gives children the tools and motivation to champion energy efficiency by earning a Green Allowance, a contract between the child and parents to share energy savings achieved on their electric bill.

**Over 20% of Glendale's power is generated by clean, renewable, and alternative sources.**

## Greenhouse Gas Reductions

3. Adopt a citywide greenhouse gas (GHG) reduction plan that reduces the jurisdiction's emissions by twenty-five percent by 2030, and which includes a system for accounting and auditing GHGs.

 In Progress

### Greenhouse Gas Inventory & Reduction Plan

City staff is working on a GHG reduction plan for Glendale, which will include a GHG inventory and strategies for reducing those emissions.

California Assembly Bill 32, the Global Warming Solutions Act, and California Senate Bill 375, the Sustainable Communities and Climate Protection Act, are guiding policy, funding, and GHG reduction targets for local governments statewide.

### GWP GHG Reporting




Glendale Water & Power currently participates in public reporting of GHG emissions to the California Climate Action Registry and the California Air Resources Board. Since GWP began reporting GHG emissions in 2004 it has achieved an 18% reduction in those emissions.

## Recommended Actions

- Determine if our renewable energy portfolio meets ten percent of our city's peak electric load. If not, develop policies to meet this target.
- Complete the citywide greenhouse gas inventory and climate action plan.

## What You Can Do

A Greener Glendale is a community effort. We need everyone's help to reach our goal. Try taking on one new green action at a time for an easier transition.

-  **Explore GWP's Energy Efficiency Programs:** Visit [www.GlendaleWaterAndPower.com/Save\\_Money](http://www.GlendaleWaterAndPower.com/Save_Money) for numerous energy saving tips and options for obtaining energy from renewable sources.
-  **Become more Energy Efficient:** Ensure you have energy efficient appliances and lightbulbs. Unplug appliances when not in use or put your appliances and/or power strips on a timer.
-  **Become Involved in the Greener Glendale Plan:** The Greener Glendale Plan is the sustainability plan for the City. Become involved in the ongoing development of this plan!



To find out more or to become involved:  
[www.greenerglendale.com](http://www.greenerglendale.com)



## Achieving Zero Waste

4. Establish a policy to achieve zero waste to landfills and incinerators by 2040.

In Progress

### Community Zero Waste Plan

A draft Zero Waste Action Plan will be completed in the coming months. It will include a draft mandatory commercial recycling ordinance, options for recycling food waste, and other targeted efforts to approach zero waste.

### Municipal Facilities Recycling

Municipal facilities recycling program has resulted in an 80% increase in the amount of recycled trash from Civic Center buildings.

### Construction Waste

All waste from construction and demolition projects valued at greater than \$100K is required to be either directly recycled or taken to certified recycling facilities, with an average diversion rate of 72%.



## Reduce use of Disposable, Non-renewable Product

5. Adopt a citywide law that reduces the use of disposable, toxic, or non-renewable product category by at least fifty percent in seven years.

In Progress



### Plastic Bag Reduction Program

Glendale participates in the Los Angeles County Single Use Bag Reduction and Recycling Program and is working with the County of Los Angeles Department of Public Works Environmental Programs Division to achieve the reductions of 30% by 2010 and 65% by 2013.

### Product Stewardship Council

Glendale is a member of the California Product Stewardship Council which promotes state legislation to shift California's product waste management system from one focused on government-funded and ratepayer-financed waste diversion to one that relies on producer responsibility in order to reduce public costs and drive improvements in product design that promote environmental sustainability.

“Since 2005, we have achieved a 26.6% reduction in citywide per capita solid waste disposal.”

## User-friendly Recycling Programs

6. Implement “user-friendly” recycling and composting programs, with the goal of reducing by twenty percent per capita solid waste disposal to landfill and incineration in seven years.

Achieved

### 26% Reduction in Per Capita Disposal

Our per capita disposal in 2005 was 1.09 tons per person. In 2009 it was 0.80 tons; a 26.6% reduction.

### Recycling Programs

In 2009, 61% of Glendale's waste was diverted from the landfill through comprehensive free residential and commercial recycling and waste reduction programs. Programs include: curbside collection of recyclables and yard trimmings from residences and businesses, a City buy-back center, free compost bins and workshops, and special programs for the recycling of street sweepings, public works debris, City-generated inert waste, Christmas trees, electronics, and bulky or metal items.

### Household Hazardous Waste (HHW)

The City operates several programs to collect HHW from homes, including used motor oil and filters, and paint that the Fire Department collects for anti-graffiti programs.

### Recycling Center

The City's Recycling Center offers residents and businesses the opportunity to recycle and generally receive payment for both basic recyclables and items not collected by the City.

### Curbside Used Motor Oil Program

The City operates a curbside used motor oil program and collected more than 6,000 gallons of used motor oil and 1,200 used oil filters during year 2007-2008.

## Recommended Actions

- Complete the Zero Waste Action Plan
- Determine if plastic bag use has decreased by the targets outlined in the LA County reduction program. If not explore options for achieving these reductions.

## What You Can Do

A Greener Glendale is a community effort. We need everyone's help to reach our goal. Try taking on one new green action at a time for an easier transition.

- Shop Smart:** Think before you shop; buy only what you need.
- Reduce, Reuse, Recycle:** First, buy durable products that last, can be reused, and have minimal packaging. Before you toss an item, think about whether you or someone else can reuse it. Finally, think about whether it can be recycled and if so, recycle it.
- Carry Your Own Refillable Water Bottle and Reusable Bags:** Use reusable bottles and bags instead of single-use plastic bottles and bags that require significant resources to produce, recycle, and clean up.
- Find Out More:** Visit *www.GlendaleWaste.com* for more ideas and programs.



## Green Building

7. Adopt a policy that mandates a green building rating system standard that applies to all new municipal buildings.

 **In Progress**

### Cal Green Building Design Standards

The City has adopted the new statewide California Green Building Standards Code (“CALGreen”). City Council will determine whether municipal buildings will be required to go above and beyond the minimum standards mandated in CALGreen.

### LEED Certification on New City Facilities

City Council directed GWP to obtain Leadership in Energy & Environmental Design (LEED) certification upon completion of its two new facilities, the Training Building and Stores Building at GWP’s Utility Operations Center.



**Green Affordable Housing Projects**  
Community Redevelopment & Housing developed four affordable rental housing projects committed to exceeding, by 15% or more, the energy conservation requirements mandated by Title 24, the California Building Standards Code.

### GWP Green Building Program

This program supports green building training opportunities for GWP customers, area contractors, and city employees. It also provides incentives for various green building efforts such as green building certification, rating and technical assistance.

## Neighborhood

8. Adopt urban planning principles and practices that advance higher density, mixed use, walkable, bikeable and disabled-accessible neighborhoods which coordinate land use and transportation with open space systems for recreation and ecological reconstruction.

 **Achieved and ongoing**



### SCAG Compass Blueprint Award

The City won the SCAG Compass Blueprint Award for our Downtown Specific Plan (which provides for higher densities in the urban core on a transit corridor) and Mobility Study that encourage mobility, livability, prosperity, and sustainability for the region.

### Mixed Use Zoning

The City promotes mixed-use development in C1-C3 commercial zones, the Downtown Specific Plan, the Town Center Specific Plan (Americana at Brand commercial, residential and park redevelopment project), and the San Fernando Road Corridor. The mixed use standards are currently being reviewed to improve implementation.

### Pedestrian and Bicycle Friendly Streets

Glendale is completing several plans to improve street conditions for pedestrians and cyclists, including: The Glendale Safe & Healthy Streets Plan, Bikeway Master Plan, Pedestrian Safety Action Plan, and North Glendale Community Plan.

### Promoting Infill Development

The City has several policies in place to encourage infill, including largescale purchasing of open space to encourage infill on existing urbanized land and provision of lot consolidation incentives.

## Green Jobs

9. Adopt a policy or implement a program that creates environmentally beneficial jobs in slums and/or low-income neighborhoods

 **Achieved and ongoing**

### Smart Grid Jobs

Glendale is currently administering a jobs program through the Verdugo Jobs Center to train 30 people from poverty areas for jobs related to Smart Grid occupation. It will run through January 2012 and is funded by a grant from the United States Department of Labor.



## Recommended Actions

- Determine if standards for municipal buildings will exceed those mandated by the CALGreen code.

## What You Can Do

A Greener Glendale is a community effort. We need everyone’s help to reach our goal. Try taking on one new green action at a time for an easier transition.

-  **Green Building:** Check out GWP’s website and Green Building Program for resources to help you build it green. [www.GlendaleWaterAndPower.com/Businesses](http://www.GlendaleWaterAndPower.com/Businesses)
-  **Support Your Local Neighborhood:** Walk, bike, or take public transit to your neighborhood shops, restaurants, parks, and more. Meet your neighbors and community members.
-  **Support a Green Economy:** Buy green, implement green practices and policy in your own business, shop at green businesses, and if you are looking for a new career, consider a green or socially beneficial profession.



To find out more or to become involved:  
[www.greenerglendale.com](http://www.greenerglendale.com)



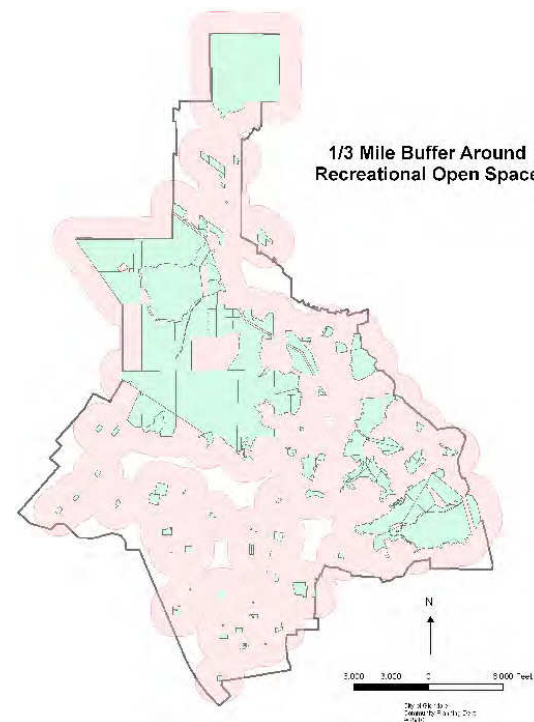
## Recreational Open Space

10. Ensure there is accessible public park or recreational open space within 1/2 kilometer of every city resident by 2015.

In Progress

### 90% Coverage

Approximately 90% of Glendale residents reside within 1/2 kilometer (1/3 mile) of a public park or recreational open space. There are 43 public parks in Glendale, as well as public school yards that are open to the public after hours, and open space trails in the Verdugo Mountains, San Rafael Hills, and San Gabriel Mountains (Deukmejian Wilderness Park).



### Los Angeles Riverfront

Glendale is committed to using 100% of its LA riverfront as a recreational amenity. The riverfront will provide nearly a mile of multi-use trail, several small riverfront parks, and an equestrian facility.

## Canopy Coverage



11. Conduct an inventory of existing canopy coverage in the city, then establish a goal based on ecological and community considerations to plant and maintain canopy coverage in not less than fifty per cent of all available sidewalk planting sites.

In Progress

### City Tree Inventory

The City has an inventory of City trees on the public right of way, as well as a maintenance plan for them.

### Tree Reforestation Program

The City's Annual and Indigenous Tree Reforestation programs work to increase tree canopy coverage in the city. Since 2005, 1,872 street trees have been planted in the public right of way.

### Tree Power Program

The City's Tree Power program provides residents up to three free shade trees and arborist services to ensure that the trees are planted correctly. This program has resulted in over 2,000 trees planted since July 2004.

### Parking Lot Tree Coverage

The City requires new parking lots to have one tree planted for every six parking spaces. At least 75% of



## Protecting Habitat

12. Pass legislation that protects critical habitat corridors and other key habitat characteristics (e.g. water features, food-bearing plants, shelter for wildlife, use of native species, etc.) from unsustainable development.

Achieved and ongoing

### Protected Trees, Streams, and Ridgelines

Under the City's Municipal Code, the following habitat characteristics are protected: Oak, Bay, and Sycamore trees; blue line streams (riparian habitats), and ridgelines. Glendale's Hillside Development Standards for new subdivisions also call for protection of natural hillsides, stream channels, habitat and vegetation areas.



### Purchasing Open Space

The City purchased large tracts of undeveloped land in hillside areas (e.g. Poulsen, Murchison and Flint Canyon properties) for public open space purposes.

### Native Plant Restoration

The City conducts a community work day at Deukmejian Wilderness Park called the "Third Saturday Work Day" in which non-native plants are removed and trails maintained. Plans are in place to develop a native plant nursery to help with park restoration.

## Recommended Actions

- Identify areas not within 1/3 mile distance from a public park or open space and develop strategies to provide this space for them.
- Complete a citywide canopy coverage inventory and analysis, and adopt a canopy coverage plan.

## What You Can Do

A Greener Glendale is a community effort. We need everyone's help to reach our goal. Try taking on one new green action at a time for an easier transition.

- Volunteer:** Participate in Community Workday at Deukmejian Wilderness Park (Third Saturday of every month). Call 818-548-2000 for information.
- Plant a Tree:** Participate in GWP's Tree Power Program. Visit [www.GlendaleWaterAndPower.com/Save\\_Money](http://www.GlendaleWaterAndPower.com/Save_Money)
- Support Parks:** Spend time in your local parks and participate in park events. Visit [www.Ci.Glendale.CA.US/Parks](http://www.Ci.Glendale.CA.US/Parks) for more information.



## Public Transportation

13. Develop and implement a policy which expands affordable public transportation coverage to within 1/2 kilometer (1/3 mile) of all city residents in ten years.

**Achieved and ongoing**

### Regional Bus Service

Ten regional routes, provided by Los Angeles Metro, operate along major Glendale corridors, linking Glendale to Downtown Los Angeles, San Fernando Valley, and San Gabriel Valley. Fare is \$1.50 per one way trip and seniors and the disabled are half fare.

### Glendale Beeline

The Beeline has ten routes serving as community circulators connecting neighborhoods to local destinations and to Metro lines serving the county. Fare is 25 cents one-way and seniors and the disabled are half fare.



### Dial-A-Ride Program

Glendale's Dial-A-Ride program offers transportation to seniors and the disabled of any age for just \$1.00 per one way trip.

### Increasing Accessibility

The City bus service is increasing accessibility to its users by upgrading bus stops (adding shelters, benches, lighting, trash cans) and offers real-time bus arrival information to aid in travel planning.

### Transit Planning Every Five Years

Transit service coverage is studied approximately every five years to identify any unmet needs and plan accordingly.

## Reduce Vehicle Air Pollution



14. Pass a law or implement a program that eliminates leaded gasoline (where it is still used); phases down sulfur levels in diesel and gasoline fuels, concurrent with using advanced emission controls on all buses, taxis, and public fleets to reduce particulate matter and smog forming emissions from those fleets by fifty percent in seven years.

**In Progress**

### No Leaded Gasoline in U.S.

Leaded gasoline is no longer available for use in the United States.

### Municipal Green Fleet

The City Fleet Management Division is developing a Green Fleet policy that emphasizes alternate fuels, Partial Zero Emissions Vehicle gasoline engines, hybrid engine vehicles, and right-sizing vehicles to the job task.

The City has 30 Compressed Natural Gas (CNG) buses, 5 CNG street sweepers, and 23 CNG refuse trucks. Over the next 5 years, it will add approximately 30 additional CNG heavy-duty vehicles to replace diesel units.

The City uses only Ultra Low Sulfur Diesel fuel for both on-road and off-road vehicles and equipment.

The City is in compliance with the California Air Resources Board (CARB) mandated installation of diesel exhaust particulate trap technology on all diesel engine powered equipment covered by the CARB program, and is replacing non-complying equipment on a scheduled plan.

### Public CNG Refueling Facility

The City recently opened a public CNG refueling station at the Glendale Transportation Center.

## Reduce SOV Commute Trips

15. Implement a policy to reduce the percentage of commute trips by single occupancy vehicles (SOV) by ten percent in seven years.

**In Progress**

### Downtown Mobility Study

The Downtown Mobility Study was designed to address the challenge of how to best accommodate expected population growth in downtown Glendale, which is essential to achieving Glendale's vision of a vibrant multi-use downtown, without significantly increasing auto congestion or impacting Glendale's quality of life.

### Public Transit & Ridesharing

The City has implemented public transit and ridesharing programs for its employees, including subsidized Beeline, Metro, and Metrolink passes.

### 9/80 Work Schedule

The City operates a "9/80" work schedule, which has employees work 9 hours a day (80 hours in 2 weeks) in order to eliminate one day of driving for every two weeks.



## Recommended Actions

- Analyze fleet fuel data for pollution emission reductions achieved. Identify if further improvements are needed to meet the target and develop policies to achieve them.
- Quantify actual or potential commute trip reductions due to existing programs. Determine if further actions are needed to meet the target and develop policies to achieve them.

## What You Can Do

A Greener Glendale is a community effort. We need everyone's help to reach our goal. Try taking on one new green action at a time for an easier transition.

- Drive Less and Drive Smart:** Bike, walk, carpool, or take public transit (bus, train, etc.). Keep your car well tuned. Plan your driving trips to be more efficient (combine trips for shopping and errands, avoid unnecessary trips).



To find out more or to become involved:

[www.greenerglendale.com](http://www.greenerglendale.com)



## Reducing Use of Toxics

16. Every year, identify one product, chemical, or compound that is used within the city that represents the greatest risk to human health and adopt a law and provide incentives to reduce or eliminate its use by the municipal government.

**In Progress**

### Organic & Safe Cleaning Products

In Municipal buildings, all cleaning products used (except bathroom disinfectant) are organic and safe. Municipal departments regularly reduce use of toxic products when possible.

### Regulating Toxic Products City-wide

The Glendale Fire Department regulates some 300 extremely hazardous chemicals within the city. Businesses that use or store these chemicals must develop expensive risk management plans, which act as a disincentive to using the chemicals and encourage substituting the chemical with a less hazardous material.



## Locally Grown, Organic Foods

17. Promote the public health and environmental benefits of supporting locally-grown organic foods. Ensure that twenty percent of all city facilities (including schools) serve locally-grown and organic foods within seven years.

**In Progress**

### Four Weekly Farmer's Markets

The Downtown Glendale, Montrose Shopping Park, Kenneth Village, and Gigi's (at the Americana) weekly farmers' markets offer locally grown and organic foods. The Downtown Market is within walking distance to City Hall, making this food available to city facilities.



### Community Gardens

Glendale's four community gardens (Verdugo, Palmer, Monterey East, and Monterey West) promote locally grown, organic food.



## Air Quality Index

18. Establish an Air Quality Index (AQI) to measure the level of air pollution and set the goal of reducing by ten percent in seven years the number of days categorized in the AQI range as "unhealthy" or "hazardous."

**In Progress**

### South Coast Air Quality Management District (SCAQMD)

The SCAQMD regulates regional stationary air pollution emissions and monitors the region's air quality against an established air quality index.

Glendale currently reports air pollution emissions to, and complies with regulations set forth by, the SCAQMD in order to bring the city into compliance with clean air standards. However, the Southern California region as a whole has not yet achieved the clean air standards.



### Glendale Fresh Air Program

Glendale's Fresh Air Program prohibits cigarette smoking in certain public zones in order to limit the impact of second-hand smoke on non-smokers.



## Recommended Actions

- Identify toxic products used within the City that should be eliminated. Adopt policy to systematically remove these products on an annual basis.
- Work with Glendale Unified School District to explore the possibility of serving locally grown, organic food in schools.
- Explore techniques of addressing regional air quality problems at the local level and adopt a plan to implement them.

## What You Can Do

A Greener Glendale is a community effort. We need everyone's help to reach our goal. Try taking on one new green action at a time for an easier transition.

- Reduce Use of Toxics:** Identify the most toxic products used in your household and replace them with safer, healthier products.
- Support Your Local Farmers Market:** Support your local Farmers' Market by shopping there weekly, telling others about it, or encouraging others to shop there.

Farmer's Market info: [www.ci.glendale.ca.us/dev-svcs](http://www.ci.glendale.ca.us/dev-svcs)





## Accessibility and Reducing Consumption

19. Develop policies to increase adequate access to safe drinking water. For cities with potable water consumption greater than 100 liters (26.4 gallons) per capita per day, adopt and implement policies to reduce consumption by ten percent by 2015.

 **Achieved and ongoing**

### Safe, Accessible Drinking Water

Safe drinking water is accessible to all Glendale residents.

### Water Consumption

Water consumption in Glendale decreased by 17% over the last two years due to conservation measures.



### Smart Grid

Glendale will switch to a Smart Grid system by August 2012, which will result in considerable water savings over the next 15 years.

### GWP Community Education & Rebate Programs

Glendale Water & Power conducts extensive community outreach, in addition to rebate programs, that encourage water conservation. The rebate program resulted in 9.3 million gallons of water saved in the last year alone.

### "No Water Waste" Policy

The City's "No Water Waste" Policy restricts the use of water to reduce waste or unreasonable use.

## Protect Drinking Water Sources



20. Protect the ecological integrity of the city's primary drinking water sources (i.e., aquifers, rivers, wetlands and associated ecosystems).

 **In Progress**

### Urban Water Management Plan

Glendale's UWMP identifies water sources and programs for developing water sources, as well as protecting the water quality of these sources.

### Water Treatment Plant

A 5,200 gallons per minute treatment plant is in place to remove organic contaminants from the San Fernando Basin, which accounts for 25% or more of Glendale's water supply.

### Watershed Sanitary Survey

Glendale Water & Power currently has an effort underway to produce a Watershed Sanitary Survey for the Verdugo Groundwater Basin, which accounts for 6% of the city's drinking water supply. The primary purpose of the survey is to determine if there are potential threats to the quality of the drinking water supply in the Verdugo Basin and to determine actions to mitigate those threats.

### Protected Reservoirs and Wells

All wells and reservoirs managed by GWP are enclosed and protected from contamination, as well as inspected daily for any intrusions.

**Water consumption in Glendale has decreased by 17% in the last two years.**

## Reduce Wastewater Discharges

21. Adopt municipal wastewater management guidelines and reduce the volume of untreated wastewater discharges by 10 percent in seven years through the expanded use of recycled water and the implementation of a sustainable urban watershed planning process that includes participants of all affected communities and is based on sound economic, social, and environmental principles.

 **In Progress**

### Glendale Treats 100% of Wastewater

Glendale treats 100% of wastewater to a very high level. Even then, we have reduced wastewater production by 10% due to water conservation efforts within the city. The City is also in process of expanding its reclaimed water network.

### Stormwater Pollution Education and Outreach

The City administers a public outreach program to educate residents, businesses, and visitors about stormwater pollution, and installed stormwater treatment devices.

### Construction Best Management Practices (BMPs)

The Department of Public Works requires contractors to implement BMPs to prevent sediment and other materials from flowing into storm drains. The BMPs include dust control measures, sandbags, concrete washout areas and street sweeping. Some construction projects are required to install storm water treatment systems.





### Storm Drain Dumping Hotline

City residents can call the County Hotline (888-CLEANLA) or Glendale Public Works (818-548-3900) to report an illicit discharge into the storm drain system. Public Works staff has responded to over 500 such complaints over the last five years. Inspectors are usually dispatched in less than 30 minutes and investigations are always completed in less than 48 hours.

## Recommended Action

- Develop a sustainable urban watershed planning process that also addresses the ecological integrity of all Glendale water sources.

## What You Can Do

-  **Conserve Water:** Use less water, find and fix leaks, install water-saving devices, use native/drought tolerant landscaping, and find ways to re-use water in order to help conserve water and minimize pollution. Visit [www.GlendaleWaterAndPower.com](http://www.GlendaleWaterAndPower.com) for more ideas.
-  **Do Not Use the Toilet as a Trashcan:** Do not throw medications or other toxics down the toilet. These contaminate the water that ends up in our rivers, ocean, and groundwater wells.
-  **Capture Your Rainwater:** Explore methods of capturing rainwater instead of letting it run into the street and eventually the storm drain. Examples include capturing the water for use in landscaping, permeable paving, bioswales, green roofs, etc.
-  **Help Prevent Water Pollution:** Don't litter! Report to the City any illegal dumping into storm drains (888-CLEANLA or 818-548-3900).



## A Resolution of the City Council of the City of Glendale, California to Address Sustainability and Climate Change

WHEREAS, Sustainability means sustaining society in the long-term by meeting current environmental, social, and economic needs while ensuring future generations can meet theirs; and

WHEREAS, Glendale adopted a strategic goal in the City's Long Range Plan to lead the way toward a sustainable future, to promote a healthy and safe environment for all residents, and to be effective stewards of the community's natural resources; and

WHEREAS, Glendale wishes to integrate its environment, society, economy, and governance in ways that foster vibrant social and economic conditions and a healthy ecosystem and to that end commit ourselves to creating the conditions necessary for a sustainable future; and

WHEREAS, Glendale is committed to lead by demonstrating sustainable stewardship that will yield cost savings to taxpayers by reducing City operating costs, will protect, conserve, and enhance the city's resources, and will establish community standards of sustainable living practices; and

WHEREAS, the Department of Energy awarded the Energy Efficiency & Conservation Block Grant to the City of Glendale to fund the development of a Greener Glendale Plan to address energy efficiency, conservation, and greenhouse gas emission reductions; and

WHEREAS, local government actions taken to reduce greenhouse gas emissions and increase energy efficiency provide multiple local benefits by decreasing air pollution, creating jobs, reducing energy expenditures, and saving money for the local government, its businesses, and its residents; and

WHEREAS, AB 32, the Global Warming Solutions Act of 2006, mandates that cities reduce their greenhouse gas emissions to 1990 levels by 2020;

NOW THEREFORE, BE IT RESOLVED, that the City of Glendale, California commits to addressing sustainability and climate change and using the concept of sustainability to guide policy now and in the future.

Adopted November 9, 2010



## Urban Environmental Accords

*Signed on the occasion of United Nations Environment Programme World Environment Day  
June 5th, 2005 in San Francisco, California*

### GREEN CITIES DECLARATION

RECOGNIZING for the first time in history, the majority of the planet's population now lives in cities and that continued urbanization will result in one million people moving to cities each week, thus creating a new set of environmental challenges and opportunities; and

BELIEVING that as Mayors of cities around the globe, we have a unique opportunity to provide leadership to develop truly sustainable urban centers based on culturally and economically appropriate local actions; and

RECALLING that in 1945 the leaders of 50 nations gathered in San Francisco to develop and sign the Charter of the United Nations; and

ACKNOWLEDGING the importance of the obligations and spirit of the 1972 Stockholm Conference on the Human Environment, the 1992 Rio Earth Summit (UNCED), the 1996 Istanbul Conference on Human Settlements, the 2000 Millennium Development Goals, and the 2002 Johannesburg World Summit on Sustainable Development, we see the Urban Environmental Accords described below as a synergistic extension of the efforts to advance sustainability, foster vibrant economies, promote social equity, and protect the planet's natural systems.

THEREFORE, BE IT RESOLVED, today on World Environment Day 2005 in San Francisco, we the signatory Mayors have come together to write a new chapter in the history of global cooperation. We commit to promote this collaborative platform and to build an ecologically sustainable, economically dynamic, and socially equitable future for our urban citizens; and

BE IT FURTHER RESOLVED that we call to action our fellow Mayors around the world to sign the Urban Environmental Accords and collaborate with us to implement the Accords; and

BE IT FURTHER RESOLVED that by signing these Urban Environmental Accords, we commit to encourage our City governments to adopt these Accords and commit our best efforts to achieve the Actions stated within. By implementing the Urban Environmental Accords, we aim to realize the right to a clean, healthy, and safe environment for all members of our society.

### IMPLEMENTATION & RECOGNITION

THE 21 ACTIONS that comprise the Urban Environmental Accords are organized by urban themes. They are proven first steps toward environmental sustainability. However, to achieve long-term sustainability, cities will have to progressively improve performance in all thematic areas.

Implementing the Urban Environmental Accords will require an open, transparent, and participatory dialogue between government, community groups, businesses, academic institutions, and other key partners. Accords implementation will benefit where decisions are made on the basis of a careful assessment of available alternatives using the best available science.

The call to action set forth in the Accords will most often result in cost savings as a result of diminished resource consumption and improvements in the health and general well-being of city residents. Implementation of the Accords can leverage each city's purchasing power to promote and even require responsible environmental, labor and human rights practices from vendors.

Between now and the World Environment Day 2012, cities shall work to implement as many of the 21 Actions as possible. The ability of cities to enact local environmental laws and policies differs greatly. However, the success of the Accords will ultimately be judged on the basis of actions taken. Therefore, the Accords can be implemented through programs and activities even where cities lack the requisite legislative authority to adopt laws.

The goal is for cities to pick three actions to adopt each year. In order to recognize the progress of cities to implement the Accords, a *City Green Star Program* shall be created.

At the end of the seven years a city that has implemented:

19 – 21 Actions shall be recognized as a ★★★★★ City

15 – 18 Actions shall be recognized as a ★★★★ City

12 – 17 Actions shall be recognized as a ★★★ City

8 – 11 Actions shall be recognized as a ★ City

For more information, visit:

[www.GreenCitiesCalifornia.org/urban-environmental-accords](http://www.GreenCitiesCalifornia.org/urban-environmental-accords)