

**Photo Report**

**Verdugo Park**

**Programs, Services, and Activities**

**Finding:** The Verdugo Park, located 1621 Canada Boulevard in Glendale California, was inspected by Disability Access Consultants, Inc., on June 5, 2007. Facilities include the Verdugo Park Skate Park Operations Office, Caretaker's House, Food Service Building, Maintenance Building, North and South restrooms, Stengel Field, and the Stengel Field Stadium.



**Alternative \***  
**Rec:**  
**(Where Available)**

**Full Rec:** Any renovation or new construction that occurred after January 26, 1992, is subject to meet full code specifications for the California Building Code and ADAAG requirements. All recommendations in this report are based on ADAAG and CBC title 24 requirements. Consult with your design professional to determine which elements are affected by these requirements. It is recommended that Disability Access Consultants, Inc. is consulted for inspection of any new construction or renovation at the facility.

Citations: ADAAG 4.1.2; ADAAG 4.1.3; ADAAG 4.1.5; ADAAG 4.1.6  
 Minimum Quantity: 1  
 Maximum Quantity: 1  
**Minimum Estimated Cost:** \$0.00  
**Maximum Estimated Cost:** \$0.00  
 Record Number:: 1395  
 Priority:

**Parking**

**Finding:** There are three parking lots provided at the facility. The paved parking lots are located next to the Skate Park Operations Office, outside of the Maintenance Building, and at Stengel Field.



**Alternative \***  
**Rec:**  
**(Where Available)**

**Full Rec:** Accessible paved parking spaces shall be located on the shortest accessible route of travel to the facility and shall coincide with the primary route and primary entrances used by the general public (see CBC 1129B.4, ADAAG 4.3.2(1) and ADAAG 4.14.1).

Citations: CBC 1129B; ADAAG 4.3.2(1); ADAAG 4.14.1  
 Minimum Quantity: 1  
 Maximum Quantity: 1  
**Minimum Estimated Cost:** \$0.00  
**Maximum Estimated Cost:** \$0.00  
 Record Number:: 1396  
 Priority:

## Verdugo Park

### Parking

**Finding:** Parking is provided off-street to the employees at Stengel Field, though no marked spaces are provided. The parking lot can provide approximately three parking spaces.



**Parking Lot at Stengel Field**

Citations: CBC 1129B; ADAAG 4.6

Minimum Quantity:	1
Maximum Quantity	1
<b>Minimum Estimated Cost:</b>	\$0.00
<b>Maximum Estimated Cost:</b>	\$0.00
Record Number::	1405
Priority:	

#### Alternative \*

**Rec:**  
(Where Available)

**Full Rec:** Stripe parking spaces with an appropriate number of accessible parking spaces designated to comply with CBC 1129B and ADAAG 4.6. Accessible parking spaces shall be located on the shortest accessible route of travel to the facility for which it serves and shall coincide with the primary route and entrances used by the general public (see CBC 1129B and ADAAG 4.3.2(1)). The access aisle and route to the primary facility entrance shall also be of an accessible surface.

### Parking

**Finding:** Each designated accessible parking space required in the parking lot shall provide a post-mounted sign showing the International Symbol of Accessibility.



**Parking Lot at Stengel Field**

Citations: CBC 1129B.5; ADAAG 4.6.4

Minimum Quantity:	1
Maximum Quantity	1
<b>Minimum Estimated Cost:</b>	\$150.00
<b>Maximum Estimated Cost:</b>	\$150.00
Record Number::	1406
Priority:	

#### Alternative \*

**Rec:**  
(Where Available)

**Full Rec:** Install a permanently posted reflectorized sign measuring 70 square inches that includes an ISA symbol adjacent to and visible from each accessible parking space (see CBC 1129B.5). The bottom edge of each sign must be mounted 80 inches from the ground surface so that it cannot be obscured by a parked vehicle (see CBC 1129B.5). The "van-accessible" parking space shall provide an additional sign marked "van-accessible" mounted below the sign (see CBC 1129B.5 and ADAAG 4.6.4).

## Verdugo Park

### Parking

**Finding:** There is no warning signage posted at the entrance to the parking lot regarding unauthorized use of accessible parking spaces in the parking lot.

#### Alternative \*

**Rec:**  
(Where Available)

**Full Rec:** Post a sign in a conspicuous place to the entrance of the parking lot, or immediately adjacent to and visible from each accessible parking space. The warning sign shall measure at least 17 inches by 22 inches in size and consist of lettering at least 1 inch in height that clearly and conspicuously states the following; "Unauthorized vehicles parked in designated accessible spaces not displaying distinguishing placards or license plates issued for persons with disabilities may be towed away at owner's expense. Towed vehicles may be reclaimed at \_\_\_\_ or by telephoning \_\_\_\_ ." Fill in the blank spaces with appropriate information as a permanent part of the sign and maintain the currency of the information (see CBC 1129B.5). Be sure to add the CVC 22511.8(a)(d) to the sign.

### Parking

**Finding:** There are two accessible parking spaces out of 26 parking spaces which is sufficient in number as required for compliance. Each accessible parking space provided measures at least 108 inches wide and 216 inches long. The accessible parking spaces share a "van-accessible" access aisle measuring 112 inches wide. The access aisle does not contain "NO PARKING" in 12" high white letters.

#### Alternative \*

**Rec:**  
(Where Available)

**Full Rec:** Two out of the 26 total number of marked parking spaces meets the number required to be designated exclusively for accessible parking according to ADAAG and CBC 1129B. Add the words NO PARKING in 12 inch high white letters at the entrance to each accessible parking access aisle.



#### **Parking Lot at Stengel Field**

Citations: CBC 1129B.5; ADAAG 4.6.4 CVC 22511.8(a)(d)

Minimum Quantity:	1
Maximum Quantity	1
<b>Minimum Estimated Cost:</b>	\$150.00
<b>Maximum Estimated Cost:</b>	\$150.00
Record Number::	1407
Priority:	



#### **Parking Lot Next to the Skate Park Operations Office**

Citations: CBC 1129B; ADAAG 4.6; ADAAG A4.6

Minimum Quantity:	1
Maximum Quantity	1
<b>Minimum Estimated Cost:</b>	\$270.00
<b>Maximum Estimated Cost:</b>	\$270.00
Record Number::	1397
Priority:	

# Verdugo Park

## Parking

**Finding:** The surface of the accessible parking space, at the left, and the access aisle has a slope greater than 2%.



**Parking Lot Next to the Skate Park Operations Office**

**Alternative \***  
**Rec:**  
**(Where Available)**

**Full Rec:** Pave the parking lot at the accessible spaces to provide a level surface. Parking surfaces and access aisles shall be located in areas not exceeding 2% slope in all directions (see CBC 1129B and ADAAG 4.6.3).

Citations: CBC 1129B; ADAAG 4.6.3

Minimum Quantity:	1
Maximum Quantity	1
<b>Minimum Estimated Cost:</b>	\$900.00
<b>Maximum Estimated Cost:</b>	\$900.00

Record Number:: 1398

Priority:

## Parking

**Finding:** There is no crosswalk provided on the path of travel from the accessible parking space to the facility. The required accessible route crosses a vehicular way.



**Parking Lot Next to the Skate Park Operations Office**

**Alternative \***  
**Rec:**  
**(Where Available)**

**Full Rec:** Stripe a crosswalk not less than 48 inches wide on the path of travel to the accessible entrance. Provide a level surface that does not exceed a slope greater than 5%. Cross slopes shall not exceed 2%. Detectable warnings should be placed at the entrance and exit of the crosswalk.

Citations: ADAAG 4.7.9

Minimum Quantity:	1
Maximum Quantity	1
<b>Minimum Estimated Cost:</b>	\$100.00
<b>Maximum Estimated Cost:</b>	\$100.00

Record Number:: 1399

Priority:

# Verdugo Park

## Parking

**Finding:** The vertically-mounted signage at the designated accessible parking space, at the right, uses the word "handicapped".

**Alternative \***  
**Rec:**  
**(Where Available)**



**Parking Lot Next to the Skate Park  
Operations Office**

**Full Rec:** Install a permanently posted reflectorized sign measuring 70 square inches that includes an ISA symbol adjacent to and visible from the accessible parking space (see CBC 1129B.5). The bottom edge of the sign must be mounted 80 inches from the ground surface so that it cannot be obscured by a parked vehicle (see CBC 1129B.5). The "van-accessible" parking space shall provide an additional sign marked "van-accessible" mounted below the sign (see CBC 1129B.5 and ADAAG 4.6.4).

Citations: CBC 1129B.5; ADAAG 4.6.4

Minimum Quantity:	1
Maximum Quantity	1
<b>Minimum Estimated Cost:</b>	\$150.00
<b>Maximum Estimated Cost:</b>	\$150.00
Record Number::	1400
Priority:	



# Verdugo Park

## Parking

**Finding:** There is no warning signage posted at the entrance to the parking lot regarding unauthorized use of accessible parking spaces in the parking lot.



**Parking Lot Next to the Skate Park  
Operations Office**

Citations: CBC 1129B.5; ADAAG 4.6.4 CVC 22511.8(a)(d)

Minimum Quantity:	1
Maximum Quantity	1
<b>Minimum Estimated Cost:</b>	\$150.00
<b>Maximum Estimated Cost:</b>	\$150.00
Record Number::	1401
Priority:	

**Alternative \***  
**Rec:**  
**(Where Available)**

**Full Rec:** Post a sign in a conspicuous place to the entrance of the parking lot, or immediately adjacent to and visible from each accessible parking space. The warning sign shall measure at least 17 inches by 22 inches in size and consist of lettering at least 1 inch in height that clearly and conspicuously states the following;  
"Unauthorized vehicles parked in designated accessible spaces not displaying distinguishing placards or license plates issued for persons with disabilities may be towed away at owner's expense. Towed vehicles may be reclaimed at \_\_\_\_ or by telephoning \_\_\_\_ ." Fill in the blank spaces with appropriate information as a permanent part of the sign and maintain the currency of the information (see CBC 1129B.5). Be sure to add the CVC 22511.8(a)(d) to the sign.

## Verdugo Park

### Parking

**Finding:** Paved parking is provided outside of the Maintenance Building. There are no accessible parking spaces designated out of 11 total parking spaces provided in the parking lot.

**Alternative \***

**Rec:**  
**(Where Available)**



**Parking Lot Outside of the Maintenance Building**

**Full Rec:** One out of the 11 total number of marked parking spaces is required to be designated exclusively for accessible parking, as required by CBC 1129B and ADAAG. Create one van-accessible parking space measuring at least 108 inches wide and 216 inches long with an access aisle measuring at least 96 inches wide (8 feet) located on the passenger side (right side) of the parking space (see CBC 1129B). Add the words NO PARKING in 12 inch high white letters at the entrance to the accessible parking access aisle.

Citations: CBC 1129B; ADAAG 4.3.2(1); ADAAG 4.6.2; ADAAG 4.1.2(5)

Minimum Quantity:	1
Maximum Quantity	1
<b>Minimum Estimated Cost:</b>	\$270.00
<b>Maximum Estimated Cost:</b>	\$270.00
Record Number::	1402
Priority:	

### Parking

**Finding:** Each designated accessible parking space required in the parking lot shall provide a post-mounted sign showing the International Symbol of Accessibility.



**Parking Lot Outside of the Maintenance Building**

**Alternative \***

**Rec:**  
**(Where Available)**

**Full Rec:** Install a permanently posted reflectorized sign measuring 70 square inches that includes an ISA symbol adjacent to and visible from each accessible parking space (see CBC 1129B.5). The bottom edge of each sign must be mounted 80 inches from the ground surface so that it cannot be obscured by a parked vehicle (see CBC 1129B.5). The "van-accessible" parking space shall provide an additional sign marked "van-accessible" mounted below the sign (see CBC 1129B.5 and ADAAG 4.6.4).

Citations: CBC 1129B.5; ADAAG 4.6.4

Minimum Quantity:	1
Maximum Quantity	1
<b>Minimum Estimated Cost:</b>	\$150.00
<b>Maximum Estimated Cost:</b>	\$150.00
Record Number::	1403
Priority:	

## Verdugo Park

### Parking

**Finding:** There is no warning signage posted at the entrance to the parking lot regarding unauthorized use of accessible parking spaces in the parking lot.

**Alternative \***  
**Rec:**  
**(Where Available)**



#### ***Parking Lot Outside of the Maintenance Building***

Citations: CBC 1129B.5; ADAAG 4.6.4 CVC 22511.8(a)(d)

Minimum Quantity:	1
Maximum Quantity	1
<b>Minimum Estimated Cost:</b>	\$150.00
<b>Maximum Estimated Cost:</b>	\$150.00
Record Number::	1404
Priority:	

**Full Rec:** Post a sign in a conspicuous place to the entrance of the parking lot, or immediately adjacent to and visible from each accessible parking space. The warning sign shall measure at least 17 inches by 22 inches in size and consist of lettering at least 1 inch in height that clearly and conspicuously states the following; "Unauthorized vehicles parked in designated accessible spaces not displaying distinguishing placards or license plates issued for persons with disabilities may be towed away at owner's expense. Towed vehicles may be reclaimed at \_\_\_\_ or by telephoning \_\_\_\_ ." Fill in the blank spaces with appropriate information as a permanent part of the sign and maintain the currency of the information (see CBC 1129B.5). Be sure to add the CVC 22511.8(a)(d) to the sign.

### Curbs, Curb Ramps, and Crosswalks

**Finding:** The slope at the top landing is greater than 2%. The slope at the bottom landing is greater than 2%. The slope of the side flares is greater than 10%. The curb ramp does not provide a grooved border along the top and sides of the ramp at the level of the sidewalk. The concrete curb ramp does not provide a detectable warning surface which includes truncated domes.

**Alternative \***  
**Rec:**  
**(Where Available)**



#### ***Curb Ramp Next to the North Restrooms***

Citations: CBC 1127B.5.3; ADAAG 4.7.2 & 4.29

Minimum Quantity:	1
Maximum Quantity	1
<b>Minimum Estimated Cost:</b>	\$1,033.00
<b>Maximum Estimated Cost:</b>	\$1,033.00
Record Number::	1408
Priority:	

**Full Rec:** Replace the curb ramp with a compliant curb ramp at least 48 inches in width that provides a slope no greater than 8.33%. Install a detectable warning surface which extends the full length and width of the concrete curb ramp and its side flares with truncated domes that contrast visually by either light on dark or dark on light which is an integral part of the concrete curb ramp. The truncated domes may be cast in place or stamped or of a prefabricated surface treatment (see CBC 1127B.5.8).



**Verdugo Park**  
**Curbs, Curb Ramps, and Crosswalks**

**Finding:** The accessible route to the outdoor dining area next to the Maintenance Building crosses a curb. There is no curb ramp provided.

**Alternative \***  
**Rec:**  
**(Where Available)**

**Full Rec:** Install a compliant curb ramp at least 48 inches in width that provides a slope no greater than 8.33%. Install a detectable warning surface which extends the full length and width of the concrete curb ramp and its side flares with truncated domes that contrast visually by either light on dark or dark on light which is an integral part of the concrete curb ramp. The truncated domes may be cast in place or stamped or of a prefabricated surface treatment (see CBC 1127B.5.8).

**Path of Travel**

**Finding:** There is no accessible route from the public right of way to the accessible entrance of the facility. The accessible route crosses and adjoins vehicular traffic.

**Alternative** Post directional signage.  
**Rec:**  
**(Where Available)**

**Full Rec:** Provide at least one accessible route from the public right of way to the accessible entrance of the facility. Make certain to post signage indicating the direction to accessible building entrances at every major junction along the accessible route. Signs shall include the International Symbol of Accessibility.



**Path of Travel to the Outdoor Dining Area**

Citations: CBC 1127B.5; ADAAG 4.7.1

Minimum Quantity:	1
Maximum Quantity:	1
<b>Minimum Estimated Cost:</b>	<b>\$1,033.00</b>
<b>Maximum Estimated Cost:</b>	<b>\$1,033.00</b>
Record Number::	1434
Priority:	



**Accessible Route from the Public Right of Way**

Citations: CBC 1114B.1.2; CBC 1117B.5.7; CBC 1127B.3; ADAAG 4.1.2(7); ADAAG 4.3.2; ADAAG 4.14.1

Minimum Quantity:	1
Maximum Quantity:	1
<b>Minimum Estimated Cost:</b>	<b>\$107.00</b>
<b>Maximum Estimated Cost:</b>	<b>\$0.00</b>
Record Number::	1439
Priority:	

**Verdugo Park  
Path of Travel**

**Finding:** There is no crosswalk provided on the path of travel from the public right of way to the facility. The required accessible route crosses a vehicular way.

**Alternative \***  
**Rec:**  
**(Where Available)**



***Accessible Route from the Public Right of Way***

**Full Rec:** Stripe a crosswalk not less than 48 inches wide on the path of travel to the accessible entrance of the facility. Provide a level surface that does not exceed a slope greater than 5%. Cross slopes shall not exceed 2%. Detectable warnings should be placed at the entrance and exit of the crosswalk.

Citations: ADAAG 4.7.9 ADAAG 4.2.9

Minimum Quantity:	1
Maximum Quantity	1
<b>Minimum Estimated Cost:</b>	\$100.00
<b>Maximum Estimated Cost:</b>	\$100.00

Record Number:: 1440

Priority:

**Path of Travel**

**Finding:** The locker rooms at Stengel Field were locked at the time of inspection. A complete inspection of the locker rooms could not be conducted at the time of inspection.

**Alternative \***  
**Rec:**  
**(Where Available)**



***Locker Rooms at Stengel Field***

**Full Rec:** Due to the unavailability of a specific element at the time of the facility inspection process, it is recommended that upon all elements should be inspected for ADA compliance as they become available.

Citations: CBC 1101B.1; ADAAG 4.1.2; ADAAG 4.1.3; ADAAG 4.1.6

Minimum Quantity:	1
Maximum Quantity	1
<b>Minimum Estimated Cost:</b>	\$0.00
<b>Maximum Estimated Cost:</b>	\$0.00

Record Number:: 1460

Priority:

**Verdugo Park  
Path of Travel**

**Finding:** Lockers are a service provided for use. The lockers have hardware which requires tight grasping, pinching, or twisting of the wrist and are not accessible.

**Alternative \*  
Rec:  
(Where  
Available)**

**Full Rec:** When an individual with a disability has need for the locker service, modify a locker as needed or provide equivalent facilitation upon request.



**Maintenance Building**

Citations: CBC 1105.4.3; ADAAG 4.27.4

Minimum Quantity:	1
Maximum Quantity	1
<b>Minimum Estimated Cost:</b>	\$0.00
<b>Maximum Estimated Cost:</b>	\$0.00
Record Number::	1431
Priority:	

**Path of Travel**

**Finding:** There are open tree wells along the path of travel at the outdoor dining area with a change in elevation greater than 1/2 inch, creating a tripping hazard.

**Alternative  
Rec:  
(Where  
Available)**

**Full Rec:** Install edge protection on each side of the open tree well consisting of 3-inch high guide curb above the surface of the path of travel (see CBC 1133B.7.1 and ADAAG 4.3.8).



**Open Tree Wells**

Citations: ADAAG 4.3.8; CBC 1133B.7.1

Minimum Quantity:	1
Maximum Quantity	1
<b>Minimum Estimated Cost:</b>	\$70.00
<b>Maximum Estimated Cost:</b>	\$70.00
Record Number::	1411
Priority:	

**Verdugo Park  
Path of Travel**

**Finding:** There is no crosswalk provided on the path of travel to Stengel Field. The required accessible route crosses a vehicular way.

**Alternative \***  
**Rec:**  
**(Where Available)**

**Full Rec:** Stripe a crosswalk not less than 48 inches wide on the path of travel to the accessible entrance of the facility. Provide a level surface that does not exceed a slope greater than 5%. Cross slopes shall not exceed 2%. Detectable warnings should be placed at the entrance and exit of the crosswalk.



***Path of Travel to Stengel Field***

Citations: ADAAG 4.7.9 ADAAG 4.2.9

Minimum Quantity:	1
Maximum Quantity	1
<b>Minimum Estimated Cost:</b>	<b>\$100.00</b>
<b>Maximum Estimated Cost:</b>	<b>\$100.00</b>
Record Number::	1418
Priority:	

**Path of Travel**

**Finding:** The path of travel to the main entrance of the Caretaker's House is grass, preventing access to individuals with mobility impairments.

**Alternative \***  
**Rec:**  
**(Where Available)**

**Full Rec:** Install an accessible route to where programs, services and activities are provided (see CBC 1114B.1.2 and ADAAG 4.3.2). The minimum width of the path of travel shall be 48 inches with a firm, stable and slip-resistant surface. No protruding objects are permitted on the accessible path of travel and slopes shall not exceed 5% in the direction of travel.



***Path of Travel to the Caretaker's House***

Citations: CBC 1114B.1.2; ADAAG 4.3.6

Minimum Quantity:	1
Maximum Quantity	1
<b>Minimum Estimated Cost:</b>	<b>\$1,440.00</b>
<b>Maximum Estimated Cost:</b>	<b>\$1,440.00</b>
Record Number::	1429
Priority:	

## Verdugo Park

### Path of Travel

**Finding:** There is a step on the primary path of travel to the main entrance of the Caretaker's House, preventing access to individuals with mobility impairments.



***Path of Travel to the Caretaker's House***

Citations: CBC 1114B.1.2; CBC 1133B.7.4; ADAAG 4.3.8

Minimum Quantity: 1

Maximum Quantity: 1

**Minimum Estimated Cost:** \$9,515.00

**Maximum Estimated Cost:** \$9,515.00

Record Number:: 1430

Priority:

#### Alternative \*

**Rec:**  
**(Where Available)**

**Full Rec:** Since programs, services and activities to staff and the public (volunteers, etc.) are provided in this location, those programs, services and activities are required to be made accessible. It is recommended that a ramp be installed or other means of vertical access.

### Path of Travel

**Finding:** The path of travel to the drinking fountain at Stengel Field is dirt, preventing access to individuals with mobility impairments.



***Path of Travel to the Drinking Fountain at Stengel Field***

Citations: CBC 1114B.1.2; ADAAG 4.3.6

Minimum Quantity: 1

Maximum Quantity: 1

**Minimum Estimated Cost:** \$1,440.00

**Maximum Estimated Cost:** \$1,440.00

Record Number:: 1585

Priority:

#### Alternative \*

**Rec:**  
**(Where Available)**

**Full Rec:** Install an accessible route to where programs, services and activities are provided (see CBC 1114B.1.2 and ADAAG 4.3.2). The minimum width of the path of travel shall be 48 inches with a firm, stable and slip-resistant surface. No protruding objects are permitted on the accessible path of travel and slopes shall not exceed 5% in the direction of travel.



# Verdugo Park

## Path of Travel

**Finding:** There are slopes greater than 5% on the primary path of travel to the Food Service Building.



***Path of Travel to the Food Service Building***

Citations: CBC 1133B.7.1.3; CBC 1133B.7.3; ADAAG 4.3.7

Minimum Quantity: 1

Maximum Quantity: 1

**Minimum Estimated Cost:** \$1,440.00

**Maximum Estimated Cost:** \$1,440.00

Record Number:: 1422

Priority:

### Alternative \*

**Rec:**  
**(Where Available)**

**Full Rec:** Resurface the path of travel to provide a level surface that does not exceed a slope greater than 5%. Cross slopes shall not exceed 2%.

## Path of Travel

**Finding:** There is no crosswalk provided on the path of travel to the locker room and restrooms at Stengel Field. The required accessible route crosses a vehicular way.



***Path of Travel to the Locker Room and Restrooms at Stengel Field***

Citations: ADAAG 4.7.9 ADAAG 4.2.9

Minimum Quantity: 1

Maximum Quantity: 1

**Minimum Estimated Cost:** \$100.00

**Maximum Estimated Cost:** \$100.00

Record Number:: 1419

Priority:

### Alternative \*

**Rec:**  
**(Where Available)**

**Full Rec:** Stripe a crosswalk not less than 48 inches wide on the path of travel to the accessible entrance of the facility. Provide a level surface that does not exceed a slope greater than 5%. Cross slopes shall not exceed 2%. Detectable warnings should be placed at the entrance and exit of the crosswalk.

**Verdugo Park  
Path of Travel**

**Finding:** The mat at the entrance does not adhere to the underlying floor surface and creates a hazardous path of travel.

**Alternative \***  
**Rec:**  
**(Where Available)**

**Full Rec:** Securely fasten the mats or replace with a mat that grips to the underlying floor surface to provide a firm, stable, continuous and relatively smooth path of travel surface (see CBC 1124B.3 and ADAAG 4.5.3). Mats along the primary path of travel shall provide beveled edges on all sides to prevent roll over.



***Path of Travel to the Locker Rooms at Stengel Field***

Citations: CBC 1124B.3; ADAAG 4.5.3

Minimum Quantity:	1
Maximum Quantity	1
<b>Minimum Estimated Cost:</b>	<b>\$659.00</b>
<b>Maximum Estimated Cost:</b>	<b>\$659.00</b>

Record Number:: 1426

Priority:

**Path of Travel**

**Finding:** There are only stairs to the primary functions provided, preventing access to individuals with mobility impairments.

**Alternative \***  
**Rec:**  
**(Where Available)**

**Full Rec:** Since programs, services and activities to staff and the public (volunteers, etc.) are provided in this location, those programs, services and activities are required to be made accessible. It is recommended that a ramp be installed or other means of vertical access.



***Path of Travel to the Locker Rooms at Stengel Field***

Citations: CBC 1133B.5; ADAAG 4.3.2

Minimum Quantity:	1
Maximum Quantity	2
<b>Minimum Estimated Cost:</b>	<b>\$9,515.00</b>
<b>Maximum Estimated Cost:</b>	<b>\$19,030.00</b>

Record Number:: 1459

Priority:

**Verdugo Park**  
**Path of Travel**

**Finding:** The mat at the entrance does not adhere to the underlying floor surface and creates a hazardous path of travel.

**Alternative \***  
**Rec:**  
**(Where Available)**

**Full Rec:** Securely fasten the mats or replace with a mat that grips to the underlying floor surface to provide a firm, stable, continuous and relatively smooth path of travel surface (see CBC 1124B.3 and ADAAG 4.5.3). Mats along the primary path of travel shall provide beveled edges on all sides to prevent roll over.



***Path of Travel to the Maintenance Building***

Citations: CBC 1124B.3; ADAAG 4.5.3

Minimum Quantity:	1
Maximum Quantity	1
<b>Minimum Estimated Cost:</b>	\$659.00
<b>Maximum Estimated Cost:</b>	\$659.00

Record Number:: 1481

Priority:

**Path of Travel**

**Finding:** There is no crosswalk provided on the path of travel to the Maintenance Building and Caretaker's House. The required accessible route crosses a vehicular way.

**Alternative \***  
**Rec:**  
**(Where Available)**

**Full Rec:** Stripe a crosswalk not less than 48 inches wide on the path of travel to the accessible entrance of the facility. Provide a level surface that does not exceed a slope greater than 5%. Cross slopes shall not exceed 2%. Detectable warnings should be placed at the entrance and exit of the crosswalk.



***Path of Travel to the Maintenance Building and Caretaker's House***

Citations: ADAAG 4.7.9 ADAAG 4.2.9

Minimum Quantity:	1
Maximum Quantity	1
<b>Minimum Estimated Cost:</b>	\$100.00
<b>Maximum Estimated Cost:</b>	\$100.00

Record Number:: 1591

Priority:

**Verdugo Park**  
**Path of Travel**

**Finding:** There is a crosswalk provided on the path of travel to the north restrooms, the crosswalk does not provide detectable warnings at the entrance and exit of the crosswalk.

**Alternative \***  
**Rec:**  
**(Where Available)**



***Path of Travel to the North Restrooms***

Citations: CBC 1127B.5.8 ADAAG 4.2.9

**Full Rec:** Install a detectable warning surface at the entrance and exit of the crosswalk with truncated domes that contrast visually by either light on dark or dark on light which is an integral part of the concrete curb ramp. The truncated domes may be cast in place or stamped or of a prefabricated surface treatment (see CBC 1127B.5.8).

Minimum Quantity:	1
Maximum Quantity	1
<b>Minimum Estimated Cost:</b>	<b>\$0.00</b>
<b>Maximum Estimated Cost:</b>	<b>\$0.00</b>

Record Number:: 1437

Priority:

**Path of Travel**

**Finding:** There are slopes greater than 5% on the primary path of travel to the north restrooms.

**Alternative \***  
**Rec:**  
**(Where Available)**



***Path of Travel to the North Restrooms***

Citations: CBC 1133B.7.1.3; CBC 1133B.7.3; ADAAG 4.3.7

**Full Rec:** Resurface the path of travel to provide a level surface that does not exceed a slope greater than 5%. Cross slopes shall not exceed 2%.

Minimum Quantity:	1
Maximum Quantity	1
<b>Minimum Estimated Cost:</b>	<b>\$1,440.00</b>
<b>Maximum Estimated Cost:</b>	<b>\$1,440.00</b>

Record Number:: 1438

Priority:

**Verdugo Park**  
**Path of Travel**

**Finding:** There are slopes greater than 5% on the primary path of travel from the Skate Park to the outdoor dining area.

**Alternative \***  
**Rec:**  
**(Where Available)**

**Full Rec:** Resurface the path of travel to provide a level surface that does not exceed a slope greater than 5%. Cross slopes shall not exceed 2%.



***Path of Travel to the Outdoor Dining Area***

Citations: CBC 1133B.7.1.3; CBC 1133B.7.3; ADAAG 4.3.7

Minimum Quantity: 1

Maximum Quantity: 1

**Minimum Estimated Cost:** \$1,440.00

**Maximum Estimated Cost:** \$1,440.00

Record Number:: 1410

Priority:

**Path of Travel**

**Finding:** There is a change in elevation greater than 1/2 inch on the primary path of travel to the outdoor dining area next to the Maintenance Building.

**Alternative \***  
**Rec:**  
**(Where Available)**

**Full Rec:** Bevel the area or resurface the area to provide a smooth and level path of travel (see CBC 1133B.7.4 and ADAAG 4.3.8 and ADAAG 4.5.2).



***Path of Travel to the Outdoor Dining Area***

Citations: CBC 1133B.7.4; ADAAG 4.3.8; ADAAG 4.5.2

Minimum Quantity: 1

Maximum Quantity: 1

**Minimum Estimated Cost:** \$1,440.00

**Maximum Estimated Cost:** \$1,440.00

Record Number:: 1432

Priority:



**Verdugo Park**  
**Path of Travel**

**Finding:** There is a crosswalk provided on the path of travel to the outdoor dining area next to the Maintenance Building, the crosswalk does not provide detectable warnings at the entrance and exit of the crosswalk.

**Alternative \***  
**Rec:**  
**(Where Available)**



***Path of Travel to the Outdoor Dining Area***

Citations: CBC 1127B.5.8 ADAAG 4.2.9

**Full Rec:** Install a detectable warning surface at the entrance and exit of the crosswalk with truncated domes that contrast visually by either light on dark or dark on light which is an integral part of the concrete curb ramp. The truncated domes may be cast in place or stamped or of a prefabricated surface treatment (see CBC 1127B.5.8).

Minimum Quantity:	1
Maximum Quantity:	1
<b>Minimum Estimated Cost:</b>	<b>\$0.00</b>
<b>Maximum Estimated Cost:</b>	<b>\$0.00</b>
Record Number::	1433
Priority:	

**Path of Travel**

**Finding:** There is no crosswalk provided on the path of travel to the outdoor dining area at the north end of the park. The required accessible route crosses a vehicular way.

**Alternative \***  
**Rec:**  
**(Where Available)**



***Path of Travel to the Outdoor Dining Area***

Citations: ADAAG 4.7.9 ADAAG 4.2.9

**Full Rec:** Stripe a crosswalk not less than 48 inches wide on the path of travel to the accessible entrance of the facility. Provide a level surface that does not exceed a slope greater than 5%. Cross slopes shall not exceed 2%. Detectable warnings should be placed at the entrance and exit of the crosswalk.

Minimum Quantity:	1
Maximum Quantity:	1
<b>Minimum Estimated Cost:</b>	<b>\$100.00</b>
<b>Maximum Estimated Cost:</b>	<b>\$100.00</b>
Record Number::	1435
Priority:	

**Verdugo Park  
Path of Travel**

**Finding:** There are only stairs to the primary functions provided on the stage, preventing access to individuals with mobility impairments.

**Alternative \***  
**Rec:**  
**(Where Available)**



***Path of Travel to the Outdoor Stage***

Citations: CBC 1114B.1.2; ADAAG 4.3.2

**Full Rec:** Install a vertical platform lift to provide a direct path between the stage and level seating area, allowing individuals with mobility impairments to participate in programs, services and activities provided by the facility on the stage. The ADA mandates accessibility to programs, services and activities which serve the public.

Minimum Quantity:	1
Maximum Quantity	1
<b>Minimum Estimated Cost:</b>	<b>\$0.00</b>
<b>Maximum Estimated Cost:</b>	<b>\$8,210.00</b>
Record Number::	1413
Priority:	

**Path of Travel**

**Finding:** There are slopes greater than 5% on the primary path of travel to the play equipment next to the Skate Park.

**Alternative \***  
**Rec:**  
**(Where Available)**



***Path of Travel to the Play Equipment***

Citations: CBC 1133B.7.1.3; CBC 1133B.7.3; ADAAG 4.3.7

**Full Rec:** Resurface the path of travel to provide a level surface that does not exceed a slope greater than 5%. Cross slopes shall not exceed 2%.

Minimum Quantity:	1
Maximum Quantity	1
<b>Minimum Estimated Cost:</b>	<b>\$1,440.00</b>
<b>Maximum Estimated Cost:</b>	<b>\$1,440.00</b>
Record Number::	1595
Priority:	

## Verdugo Park

### Path of Travel

**Finding:** The concrete walkway serves as a primary path of travel. The width of the concrete walkway is less than 48 inches in width.



***Path of Travel to the Restrooms at Stengel Field***

Citations: CBC 1133B.7.1; CBC 1133B.2.3; CBC 1118B.2; ADAAG 4.1.3(16); ADAAG 4.3.3; ADAAG 4.30

Minimum Quantity:	1
Maximum Quantity	1
<b>Minimum Estimated Cost:</b>	\$1,440.00
<b>Maximum Estimated Cost:</b>	\$1,440.00

Record Number:: 1421

Priority:

#### Alternative \*

**Rec:**  
**(Where Available)**

**Full Rec:** Modify the exterior primary path of travel by extending the width of the concrete walkway to at least 48 inches (see CBC 1118B.2 and ADAAG 4.3.3). Since the accessible route is less than 60 inches in width, provide passing spaces at least 60 inches by 60 inches at reasonable intervals every 200 feet.

### Path of Travel

**Finding:** There are only stairs to the primary functions provided, preventing access to individuals with mobility impairments.



***Path of Travel to the Skate Park***

Citations: CBC 1133B.5; ADAAG 4.3.2

Minimum Quantity:	1
Maximum Quantity	1
<b>Minimum Estimated Cost:</b>	\$9,515.00
<b>Maximum Estimated Cost:</b>	\$9,515.00

Record Number:: 1412

Priority:

#### Alternative \*

**Rec:**  
**(Where Available)**

**Full Rec:** Since programs, services and activities to staff and the public (volunteers, etc.) are provided in this location, those programs, services and activities are required to be made accessible. It is recommended that a ramp be installed or other means of vertical access.

## Verdugo Park

### Path of Travel

**Finding:** There is a step on the primary path of travel to Skate Park Operations Office, preventing access to individuals with mobility impairments.



***Path of Travel to the Skate Park Operations Office***

Citations: CBC 1114B.1.2; CBC 1133B.7.4; ADAAG 4.3.8

Minimum Quantity:	1
Maximum Quantity	1
<b>Minimum Estimated Cost:</b>	\$9,515.00
<b>Maximum Estimated Cost:</b>	\$9,515.00

Record Number:: 1466

Priority:

#### Alternative \*

**Rec:**  
**(Where Available)**

**Full Rec:** Since programs, services and activities to staff and the public (volunteers, etc.) are provided in this location, those programs, services and activities are required to be made accessible. It is recommended that a ramp be installed or other means of vertical access.

### Path of Travel

**Finding:** The sink in the kitchen is in an enclosed cabinet, thereby preventing an accessible forward approach. The height of the counter surface of the sink is greater than 34 inches above the finished floor.



***Sink in the Caretaker's House***

Citations: ADAAG 4.19.3

Minimum Quantity:	1
Maximum Quantity	1
<b>Minimum Estimated Cost:</b>	\$420.00
<b>Maximum Estimated Cost:</b>	\$420.00

Record Number:: 1427

Priority:

#### Alternative \*

**Rec:**  
**(Where Available)**

**Full Rec:** Sinks in rooms must provide clear floor space in front of the sink for an accessible forward approach and shall provide at least 27 inches clear knee space and a minimum of nine inches clear toe space (see ADAAG 4.19.2). If neither clear floor space and knee and toe clearance can be provided, remove the sink cabinet and replace with an accessible wall-mounted sink unit.

**Verdugo Park  
Path of Travel**

**Finding:** The pipes under the sink in the kitchen do not provide protection against contact.

**Alternative \***  
**Rec:**  
**(Where Available)**

**Full Rec:** Insulate or otherwise configure pipes under the sink designated to be accessible in the room to protect against contact (see ADAAG 4.19.4). Make certain there are no sharp or abrasive surfaces under the sink.



**Sink in the Caretaker's House**

Citations: ADAAG 4.19.4

Minimum Quantity:	1
Maximum Quantity	1
<b>Minimum Estimated Cost:</b>	<b>\$39.00</b>
<b>Maximum Estimated Cost:</b>	<b>\$39.00</b>

Record Number:: 1428

Priority:

**Path of Travel**

**Finding:** The height of the counter surface of the sink designated to be accessible in the Food Service Building is greater than 34 inches above the finished floor.

**Alternative \***  
**Rec:**  
**(Where Available)**

**Full Rec:** Relocate the sink designated to be accessible in the Food Service Building to provide a maximum counter surface height of no greater than 34 inches above the finished floor (see ADAAG 4.19.2).



**Sink in the Food Service Building**

Citations: ADAAG 4.19.2

Minimum Quantity:	1
Maximum Quantity	1
<b>Minimum Estimated Cost:</b>	<b>\$1,286.00</b>
<b>Maximum Estimated Cost:</b>	<b>\$1,286.00</b>

Record Number:: 1423

Priority:



**Verdugo Park  
Path of Travel**

**Finding:** The pipes under the sink in the Food Service Building do not provide protection against contact.

**Alternative \***  
**Rec:**  
**(Where Available)**

**Full Rec:** Insulate or otherwise configure pipes under the sink designated to be accessible in the Food Service Building to protect against contact (see ADAAG 4.19.4). Make certain there are no sharp or abrasive surfaces under the sink.



**Sink in the Food Service Building**

Citations: ADAAG 4.19.4

Minimum Quantity:	1
Maximum Quantity	1
<b>Minimum Estimated Cost:</b>	\$39.00
<b>Maximum Estimated Cost:</b>	\$39.00
Record Number::	1424
Priority:	

**Path of Travel**

**Finding:** The faucet controls on the sink in the Food Service Building require tight grasping, pinching, or twisting of the wrist and are not accessible.

**Alternative \***  
**Rec:**  
**(Where Available)**

**Full Rec:** Install faucet controls complying with ADAAG 4.19.5 on the sink designated to be accessible in the Food Service Building. Lever-operated, push-type, touch-type or electronically controlled mechanisms are acceptable elements (see ADAAG 4.19.5). If self-closing valves are used the faucet shall remain open for at least 10 seconds.



**Sink in the Food Service Building**

Citations: ADAAG 4.19.5

Minimum Quantity:	1
Maximum Quantity	1
<b>Minimum Estimated Cost:</b>	\$392.00
<b>Maximum Estimated Cost:</b>	\$392.00
Record Number::	1425
Priority:	

**Verdugo Park  
Path of Travel**

**Finding:** Lockers are a service provided for use. The lockers have hardware which requires tight grasping, pinching, or twisting of the wrist and are not accessible.

**Alternative \***  
**Rec:**  
**(Where Available)**

**Full Rec:** When an individual with a disability has need for the locker service, modify a locker as needed or provide equivalent facilitation upon request.



**Skate Park Operations Office**

Citations: CBC 1105.4.3; ADAAG 4.27.4

Minimum Quantity:	1
Maximum Quantity	1
<b>Minimum Estimated Cost:</b>	\$0.00
<b>Maximum Estimated Cost:</b>	\$0.00
Record Number::	1409
Priority:	

**Ramps**

**Finding:** The width of the run of the concrete ramp is less than 48 inches.

**Alternative \***  
**Rec:**  
**(Where Available)**

**Full Rec:** Widen the run of the concrete ramp so that it has a minimum clear width of 48 inches (see CBC 1133B.5.2.2).



**Exterior Ramp to Stengel Field**

Citations: CBC 1133B.5.2

Minimum Quantity:	1
Maximum Quantity	1
<b>Minimum Estimated Cost:</b>	\$7,500.00
<b>Maximum Estimated Cost:</b>	\$7,500.00
Record Number::	1447
Priority:	

## Verdugo Park

### Ramps

**Finding:** The handrails are mounted at a height less than 34 inches. There are no 12-inch extensions beyond the top and bottom of the ramp.



**Exterior Ramp to Stengel Field**

Citations: CBC 1133B.5.5; ADAAG 4.8.5

Minimum Quantity: 1

Maximum Quantity: 1

**Minimum Estimated Cost:** \$1,320.00

**Maximum Estimated Cost:** \$1,320.00

Record Number:: 1448

Priority:

**Alternative \***

**Rec:**  
**(Where Available)**

**Full Rec:** Replace the handrails on each side of the ramp to provide a height between 34 inches and 38 inches. The handrails shall provide 12-inch extensions, extending beyond the top and bottom of the ramp, that are parallel to the ground surface and return smoothly to the post or wall.

### Ramps

**Finding:** The ramp is not bounded by a wall or fence, thus not providing any edge protection to prevent individuals from slipping off the ramp.



**Exterior Ramp to Stengel Field**

Citations: CBC 1133B.5.4.9; ADAAG 4.8.7

Minimum Quantity: 1

Maximum Quantity: 1

**Minimum Estimated Cost:** \$70.00

**Maximum Estimated Cost:** \$70.00

Record Number:: 1449

Priority:

**Alternative \***

**Rec:**  
**(Where Available)**

**Full Rec:** Install edge protection on each side of the ramp consisting of 3-inch high guide curb or wheel guide rails centered 3 inches (plus or minus one inch) above the surface of the ramp (see CBC 1133B.5.4.9 and ADAAG 4.8.7).

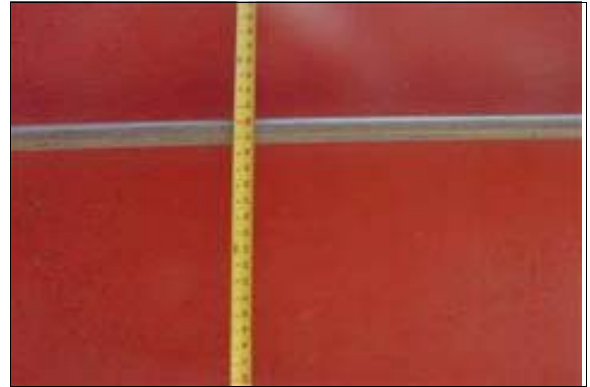
# Verdugo Park

## Ramps

**Finding:** The handrails are mounted at a height less than 34 inches. There are no 12-inch extensions beyond the bottom of the ramp. The ends of the handrails end abruptly.

**Alternative \***  
**Rec:**  
**(Where Available)**

**Full Rec:** Replace the handrails on each side of the ramp to provide a height between 34 inches and 38 inches. The handrails shall provide 12-inch extensions, extending beyond the top and bottom of the ramp, that are parallel to the ground surface and return smoothly to the post or wall.



**Exterior Ramp to the Stengel Field Stadium (Center)**

Citations: CBC 1133B.5.5; ADAAG 4.8.5

Minimum Quantity:	1
Maximum Quantity	1
<b>Minimum Estimated Cost:</b>	\$1,320.00
<b>Maximum Estimated Cost:</b>	\$1,320.00

Record Number:: 1443

Priority:

## Ramps

**Finding:** The handrails are mounted at a height less than 34 inches. There are no 12-inch extensions beyond the bottom of the ramp. The ends of the handrails end abruptly. The gripping surface of the handrails are interrupted by posts.

**Alternative \***  
**Rec:**  
**(Where Available)**

**Full Rec:** Replace the handrails on each side of the ramp to provide a height between 34 inches and 38 inches. The gripping surface shall be smooth and free from interruptions. The handrails shall provide 12-inch extensions, extending beyond the top and bottom of the ramp, that are parallel to the ground surface and return smoothly to the post or wall.



**Exterior Ramp to the Stengel Field Stadium (Left)**

Citations: CBC 1133B.5.5; ADAAG 4.8.5

Minimum Quantity:	1
Maximum Quantity	1
<b>Minimum Estimated Cost:</b>	\$1,320.00
<b>Maximum Estimated Cost:</b>	\$1,320.00

Record Number:: 1445

Priority:

## Verdugo Park Ramps

**Finding:** The slope of the concrete ramp is greater than 8.33%.



**Exterior Ramp to the Stengel Field Stadium  
(Right)**

Citations: CBC 1133B.5.3; ADAAG 4.8

Minimum Quantity:	1
Maximum Quantity:	1
<b>Minimum Estimated Cost:</b>	\$4,920.00
<b>Maximum Estimated Cost:</b>	\$4,920.00

Record Number:: 1441

Priority:

**Alternative \***  
**Rec:**  
**(Where Available)**

**Full Rec:** Modify the run of the concrete ramp to provide a slope no greater than 8.33% with a cross slope not exceeding 2% (see CBC 1133B.5.3 and ADAAG 4.8.2).

## Ramps

**Finding:** The ends of the handrails end abruptly.



**Exterior Ramp to the Stengel Field Stadium  
(Right)**

Citations: CBC 1133B.5.5; ADAAG 4.8

Minimum Quantity:	1
Maximum Quantity:	1
<b>Minimum Estimated Cost:</b>	\$2,400.00
<b>Maximum Estimated Cost:</b>	\$2,400.00

Record Number:: 1442

Priority:

**Alternative \***  
**Rec:**  
**(Where Available)**

**Full Rec:** Weld pipe extensions on the handrails of the ramp so that they continue 12 inches beyond the end of the ramp parallel to the ground surface and return smoothly to the post or wall (see CBC 1133B.5.5 and ADAAG 4.8.5).



**Verdugo Park  
Stairs**

**Finding:** There is no detectable striping on each tread of the exterior stairway.

**Alternative \***  
**Rec:**  
**(Where Available)**

**Full Rec:** Affix detectable contrasting striping to each tread of the stairway that clearly contrasts in color from the tread and is at least 2 inches in width placed no more than 1 inch from the tread nose or landing.



**Exterior Stairs to Stengel Field**

Citations: CBC 1006.16.1; CBC 11133B.4.4; ADAAG 4.9.5

Minimum Quantity:	1
Maximum Quantity	1
<b>Minimum Estimated Cost:</b>	\$144.00
<b>Maximum Estimated Cost:</b>	\$144.00

Record Number:: 1450

Priority:

**Stairs**

**Finding:** The width of the stairway is greater than 88 inches.

**Alternative \***  
**Rec:**  
**(Where Available)**

**Full Rec:** Provide one intermediate handrail for each 88 inches of stairway width. Space intermediate handrails equally across the entire width of the stairway.



**Exterior Stairs to Stengel Field**

Citations: CBC 1006.9.1

Minimum Quantity:	1
Maximum Quantity	1
<b>Minimum Estimated Cost:</b>	\$528.00
<b>Maximum Estimated Cost:</b>	\$528.00

Record Number:: 1451

Priority:

## Verdugo Park

### Stairs

**Finding:** The handrails are mounted at a height less than 34 inches above the nosing of the treads.



**Exterior Stairs to Stengel Field**

Citations: CBC 1006.9.2.1; ADAAG 4.9.4(5)

Minimum Quantity: 1

Maximum Quantity: 1

**Minimum Estimated Cost:** \$528.00

**Maximum Estimated Cost:** \$528.00

Record Number:: 1452

Priority:

#### Alternative \*

**Rec:**  
(Where Available)

**Full Rec:** Remount the handrails on the stairway so that the gripping surface of the handrails are at a consistent height between 34 inches and 38 inches above the stair nosings.

### Stairs

**Finding:** There is no detectable striping on each tread of the exterior stairway.



**Exterior Stairs to the Locker Rooms at Stengel Field**

Citations: CBC 1006.16.1; CBC 11133B.4.4; ADAAG 4.9.5

Minimum Quantity: 1

Maximum Quantity: 2

**Minimum Estimated Cost:** \$144.00

**Maximum Estimated Cost:** \$288.00

Record Number:: 1456

Priority:

#### Alternative \*

**Rec:**  
(Where Available)

**Full Rec:** Affix detectable contrasting striping to each tread of the stairway that clearly contrasts in color from the tread and is at least 2 inches in width placed no more than 1 inch from the tread nose or landing.

**Verdugo Park  
Stairs**

**Finding:** The width of the exterior stairway is less than 48 inches.

**Alternative \***  
**Rec:**  
**(Where Available)**



**Exterior Stairs to the Locker Rooms at Stengel Field**

**Full Rec:** Install an exterior stairway with a minimum width of 48 inches (see CBC 1006.2).

Citations: CBC 1006.2

Minimum Quantity:	1
Maximum Quantity:	2
<b>Minimum Estimated Cost:</b>	\$4,672.00
<b>Maximum Estimated Cost:</b>	\$9,344.00
Record Number::	1457
Priority:	

**Stairs**

**Finding:** There are no handrails provided on the stairway.

**Alternative \***  
**Rec:**  
**(Where Available)**



**Exterior Stairs to the Locker Rooms at Stengel Field**

**Full Rec:** Install pipe rail handrails on each side of stairway that provide a gripping surface between 1 1/4 to 1 7/8 inches with 12-inch top and bottom handrail extensions that extend beyond the top and bottom treads of the stairway which are parallel to the floor surface. Handrails shall be mounted at a height between 34 and 38 inches at a distance no less than 1 1/2 inches from the adjacent wall.

Citations: CBC 1006; ADAAG 4.9

Minimum Quantity:	1
Maximum Quantity:	2
<b>Minimum Estimated Cost:</b>	\$528.00
<b>Maximum Estimated Cost:</b>	\$1,056.00
Record Number::	1458
Priority:	

**Verdugo Park  
Stairs**

**Finding:** There is no detectable striping on each tread of the exterior stairway.

**Alternative \***  
**Rec:**  
**(Where Available)**

**Full Rec:** Affix detectable contrasting striping to each tread of the stairway that clearly contrasts in color from the tread and is at least 2 inches in width placed no more than 1 inch from the tread nose or landing.



**Exterior Stairs to the North Restrooms**

Citations: CBC 1006.16.1; CBC 11133B.4.4; ADAAG 4.9.5

Minimum Quantity:	1
Maximum Quantity	1
<b>Minimum Estimated Cost:</b>	\$144.00
<b>Maximum Estimated Cost:</b>	\$144.00
Record Number::	1461
Priority:	

**Stairs**

**Finding:** The width of the exterior stairway is less than 48 inches.

**Alternative \***  
**Rec:**  
**(Where Available)**

**Full Rec:** Install an exterior stairway with a minimum width of 48 inches (see CBC 1006.2).



**Exterior Stairs to the North Restrooms**

Citations: CBC 1006.2	
Minimum Quantity:	1
Maximum Quantity	1
<b>Minimum Estimated Cost:</b>	\$4,672.00
<b>Maximum Estimated Cost:</b>	\$4,672.00
Record Number::	1462
Priority:	

## Verdugo Park

### Stairs

**Finding:** The handrails do not provide 12-inch extensions beyond the top and bottom treads. The handrails are mounted at a height less than 34 inches.



**Exterior Stairs to the North Restrooms**

Citations: CBC 1133B.4.2; ADAAG 4.9.4

Minimum Quantity:	1
Maximum Quantity	1
<b>Minimum Estimated Cost:</b>	\$528.00
<b>Maximum Estimated Cost:</b>	\$528.00

Record Number:: 1463

Priority:

#### Alternative \*

**Rec:**  
**(Where Available)**

**Full Rec:** Install handrails on each side of stairway that provide 12-inch top and bottom handrail extensions that extend beyond the top and bottom treads of the stairway which are parallel to the ground surface and return smoothly to the post or wall. Handrails shall be mounted at a height between 34 and 38 inches at a distance no less than 1 1/2 inches from the adjacent wall.

### Stairs

**Finding:** There is no detectable striping on each tread of the exterior stairway.



**Exterior Stairs to the Outdoor Stage**

Citations: CBC 1006.16.1; CBC 11133B.4.4; ADAAG 4.9.5

Minimum Quantity:	1
Maximum Quantity	1
<b>Minimum Estimated Cost:</b>	\$144.00
<b>Maximum Estimated Cost:</b>	\$144.00

Record Number:: 1414

Priority:

#### Alternative \*

**Rec:**  
**(Where Available)**

**Full Rec:** Affix detectable contrasting striping to each tread of the stairway that clearly contrasts in color from the tread and is at least 2 inches in width placed no more than 1 inch from the tread nose or landing.



**Verdugo Park  
Stairs**

**Finding:** The width of the exterior stairway is less than 48 inches.

**Alternative \***  
**Rec:**  
**(Where Available)**

**Full Rec:** Install an exterior stairway with a minimum width of 48 inches (see CBC 1006.2).



**Exterior Stairs to the Outdoor Stage**

Citations: CBC 1006.2

Minimum Quantity:	1
Maximum Quantity	1
<b>Minimum Estimated Cost:</b>	\$4,672.00
<b>Maximum Estimated Cost:</b>	\$4,672.00
Record Number::	1415
Priority:	

**Stairs**

**Finding:** There are no handrails provided on the stairway.

**Alternative \***  
**Rec:**  
**(Where Available)**

**Full Rec:** Install pipe rail handrails on each side of stairway that provide a gripping surface between 1 1/4 to 1 7/8 inches with 12-inch top and bottom handrail extensions that extend beyond the top and bottom treads of the stairway which are parallel to the floor surface. Handrails shall be mounted at a height between 34 and 38 inches at a distance no less than 1 1/2 inches from the adjacent wall.



**Exterior Stairs to the Outdoor Stage**

Citations: CBC 1006; ADAAG 4.9

Minimum Quantity:	1
Maximum Quantity	1
<b>Minimum Estimated Cost:</b>	\$528.00
<b>Maximum Estimated Cost:</b>	\$528.00
Record Number::	1416
Priority:	

**Verdugo Park  
Stairs**

**Finding:** The undernosings of the treads on the stairway are abrupt.

**Alternative \***  
**Rec:**  
**(Where Available)**

**Full Rec:** Modify the nosings on the stairway so that the nosings are smooth and do not project more than 1/2 inch (see CBC 1006.2.2 and ADAAG 4.9.3). The radius of the curvature at the leading edge of the tread shall not exceed 1 1/2 inches.



**Exterior Stairs to the Outdoor Stage**

Citations: CBC 1006.2.2; ADAAG 4.9.3

Minimum Quantity:	1
Maximum Quantity:	1
<b>Minimum Estimated Cost:</b>	<b>\$3,888.00</b>
<b>Maximum Estimated Cost:</b>	<b>\$3,888.00</b>
Record Number::	1417
Priority:	

**Stairs**

**Finding:** There is no detectable striping on each tread of the exterior stairway.

**Alternative \***  
**Rec:**  
**(Where Available)**

**Full Rec:** Affix detectable contrasting striping to each tread of the stairway that clearly contrasts in color from the tread and is at least 2 inches in width placed no more than 1 inch from the tread nose or landing.



**Exterior Stairs to the Restrooms at Stengel Field**

Citations: CBC 1006.16.1; CBC 11133B.4.4; ADAAG 4.9.5

Minimum Quantity:	1
Maximum Quantity:	1
<b>Minimum Estimated Cost:</b>	<b>\$144.00</b>
<b>Maximum Estimated Cost:</b>	<b>\$144.00</b>
Record Number::	1453
Priority:	

**Verdugo Park  
Stairs**

**Finding:** The width of the stairway is greater than 88 inches.

**Alternative \***  
**Rec:**  
**(Where Available)**



***Exterior Stairs to the Restrooms at Stengel Field***

**Full Rec:** Provide one intermediate handrail for each 88 inches of stairway width. Space intermediate handrails equally across the entire width of the stairway.

Citations: CBC 1006.9.1

Minimum Quantity:	1
Maximum Quantity	1
<b>Minimum Estimated Cost:</b>	<b>\$528.00</b>
<b>Maximum Estimated Cost:</b>	<b>\$528.00</b>

Record Number:: 1454

Priority:

**Stairs**

**Finding:** The handrails are mounted at a height less than 34 inches above the nosing of the treads.

**Alternative \***  
**Rec:**  
**(Where Available)**



***Exterior Stairs to the Restrooms at Stengel Field***

**Full Rec:** Remount the handrails on the stairway so that the gripping surface of the handrails are at a consistent height between 34 inches and 38 inches above the stair nosings.

Citations: CBC 1006.9.2.1; ADAAG 4.9.4(5)

Minimum Quantity:	1
Maximum Quantity	1
<b>Minimum Estimated Cost:</b>	<b>\$528.00</b>
<b>Maximum Estimated Cost:</b>	<b>\$528.00</b>

Record Number:: 1455

Priority:

## Verdugo Park

### Doors

**Finding:** Interior passage doors have round doorknobs, which require twisting of the wrist to operate.



**Caretaker's House**

Citations: ADAAG 4.13.9

Minimum Quantity: 1

Maximum Quantity: 3

**Minimum Estimated Cost:** \$204.00

**Maximum Estimated Cost:** \$612.00

Record Number:: 1476

Priority:

#### Alternative \*

**Rec:**  
(Where Available)

**Full Rec:** Interior door hardware (doorknobs) should be changed to accessible lever-handled lockset hardware (see ADAAG 4.13.9).

### Doors

**Finding:** The exterior passage door has a round doorknob, which requires twisting of the wrist to operate.



**Caretaker's House**

Citations: ADAAG 4.13.9

Minimum Quantity: 1

Maximum Quantity: 1

**Minimum Estimated Cost:** \$834.00

**Maximum Estimated Cost:** \$834.00

Record Number:: 1478

Priority:

#### Alternative \*

**Rec:**  
(Where Available)

**Full Rec:** Replace the existing door hardware with accessible hardware (see ADAAG 4.13.9).

## Verdugo Park

### Doors

**Finding:** The height of the threshold at the entrance door is greater than 1/2 inch.



**Alternative \***  
**Rec:**  
**(Where Available)**

#### ***Caretaker's House***

**Full Rec:** Modify or replace the threshold to provide a smooth transition. The threshold should not exceed a beveled 1/2 inch. Provide a 60 inch level landing in the direction of the door swing.

Citations: CBC 1133B.2.4.1; ADAAG 4.1.6(3)(d)(ii); ADAAG 4.5.2

Minimum Quantity: 1

Maximum Quantity: 1

**Minimum Estimated Cost:** \$2,500.00

**Maximum Estimated Cost:** \$2,500.00

Record Number:: 1479

Priority:

### Doors

**Finding:** The exterior passage door has a round doorknob, which requires twisting of the wrist to operate.



**Alternative \***  
**Rec:**  
**(Where Available)**

#### ***Caretaker's House (Rear Entrance)***

**Full Rec:** Replace the existing door hardware with accessible hardware (see ADAAG 4.13.9).

Citations: ADAAG 4.13.9

Minimum Quantity: 1

Maximum Quantity: 1

**Minimum Estimated Cost:** \$834.00

**Maximum Estimated Cost:** \$834.00

Record Number:: 1474

Priority:



# Verdugo Park

## Doors

**Finding:** The clear opening width of the door is less than 32 inches.



**Caretaker's House (Rear Entrance)**

Citations: CBC 1133B.2.3.1; ADAAG 4.13.5

Minimum Quantity:	1
Maximum Quantity:	1
<b>Minimum Estimated Cost:</b>	\$750.00
<b>Maximum Estimated Cost:</b>	\$750.00
Record Number::	1475
Priority:	

**Alternative \***  
**Rec:**  
**(Where Available)**

**Full Rec:** Widen the door opening and install a door that provides at least 32 inches of clear width with the door open 90 degrees (see CBC 1133B.2.3.1 and ADAAG 4.13.5).

## Doors

**Finding:** There is less than 24 inches of clearance on the latch side of the exterior entrance gate.



**Entrance Gate to the Stengel Field Stadium (Left)**

Citations: ADAAG 4.13.6

Minimum Quantity:	1
Maximum Quantity:	1
<b>Minimum Estimated Cost:</b>	\$0.00
<b>Maximum Estimated Cost:</b>	\$0.00
Record Number::	1446
Priority:	

**Alternative \***  
**Rec:**  
**(Where Available)**

**Full Rec:** Consult a design professional to determine if it is technically feasible to provide at least 24 inches of latch side clearance at the entrance door (see ADAAG 4.13.6 and Figure 25). Otherwise, install an automatic door opening device to the primary entrance complying with ADAAG 4.13.12 and ANSI/BHMA A156.10, 1985, standards.

# Verdugo Park

## Doors

**Finding:** There is less than 24 inches of clearance on the latch side of the exterior entrance gate.

**Alternative \***  
**Rec:**  
**(Where Available)**



**Entrance Gate to the Stengel Field Stadium (Right)**

**Full Rec:** Consult a design professional to determine if it is technically feasible to provide at least 24 inches of latch side clearance at the entrance door (see ADAAG 4.13.6 and Figure 25). Otherwise, install an automatic door opening device to the primary entrance complying with ADAAG 4.13.12 and ANSI/BHMA A156.10, 1985, standards.

Citations: ADAAG 4.13.6

Minimum Quantity:	1
Maximum Quantity	1
<b>Minimum Estimated Cost:</b>	\$0.00
<b>Maximum Estimated Cost:</b>	\$0.00

Record Number:: 1444

Priority:

## Doors

**Finding:** The height of the threshold at the entrance door is greater than 1/2 inch.

**Alternative \***  
**Rec:**  
**(Where Available)**



**Food Service Building**

**Full Rec:** Modify or replace the threshold to provide a smooth transition. The threshold should not exceed a beveled 1/2 inch. Provide a 60 inch level landing in the direction of the door swing.

Citations: CBC 1133B.2.4.1; ADAAG 4.1.6(3)(d)(ii); ADAAG 4.5.2

Minimum Quantity:	1
Maximum Quantity	1
<b>Minimum Estimated Cost:</b>	\$2,500.00
<b>Maximum Estimated Cost:</b>	\$2,500.00

Record Number:: 1469

Priority:

# Verdugo Park

## Doors

**Finding:** The exterior entrance door does not provide accessible hardware.



**Food Service Building**

Citations: ADAAG 4.13.9

Minimum Quantity:	1
Maximum Quantity	1
<b>Minimum Estimated Cost:</b>	\$834.00
<b>Maximum Estimated Cost:</b>	\$834.00
Record Number::	1470
Priority:	

**Full Rec:** Replace the existing door hardware with accessible hardware (see ADAAG 4.13.9).

**Alternative \***  
**Rec:**  
**(Where Available)**

## Doors

**Finding:** There is less than 18 inches of latch side clearance from the pull side of the interior entrance door.



**Interior Doors in the Caretaker's House**

Citations: ADAAG 4.13.6; CBC 1133B.2.4.2

Minimum Quantity:	1
Maximum Quantity	2
<b>Minimum Estimated Cost:</b>	\$0.00
<b>Maximum Estimated Cost:</b>	\$0.00
Record Number::	1477
Priority:	

**Full Rec:** Consult a design professional to determine if it is technically feasible to provide at least 18 inches of latch side clearance at the entrance door from the pull side (see ADAAG 4.13.6 and Figure 25).

**Alternative \***  
**Rec:**  
**(Where Available)**

# Verdugo Park

## Doors

**Finding:** There is less than 18 inches of latch side clearance from the pull side of the interior entrance door.



**Alternative \***  
**Rec:**  
**(Where Available)**

**Full Rec:** Consult a design professional to determine if it is technically feasible to provide at least 18 inches of latch side clearance at the entrance door from the pull side (see ADAAG 4.13.6 and Figure 25).

### ***Locker Rooms at Stengel Field***

Citations: ADAAG 4.13.6; CBC 1133B.2.4.2

Minimum Quantity:	1
Maximum Quantity	1
<b>Minimum Estimated Cost:</b>	\$0.00
<b>Maximum Estimated Cost:</b>	\$0.00
Record Number::	1473
Priority:	

## Doors

**Finding:** There is no level landing provided at the entrance door.



**Alternative \***  
**Rec:**  
**(Where Available)**

**Full Rec:** Provide a level and clear landing at least 60 inches in length in the direction of the door swing.

### ***Maintenance Building***

Citations: CBC 1133B.2.4.2; ADAAG 4.13.6

Minimum Quantity:	1
Maximum Quantity	1
<b>Minimum Estimated Cost:</b>	\$0.00
<b>Maximum Estimated Cost:</b>	\$0.00
Record Number::	1480
Priority:	

## Verdugo Park

### Doors

**Finding:** The exterior passage door has a round doorknob, which requires twisting of the wrist to operate.



#### **Maintenance Building**

Citations: ADAAG 4.13.9

Minimum Quantity: 1

Maximum Quantity: 1

**Minimum Estimated Cost:** \$834.00

**Maximum Estimated Cost:** \$834.00

Record Number:: 1482

Priority:

#### **Alternative \***

**Rec:**  
**(Where Available)**

**Full Rec:** Replace the existing door hardware with accessible hardware (see ADAAG 4.13.9).

### Doors

**Finding:** The height of the threshold at the entrance door is greater than 1/2 inch.



#### **Maintenance Building**

Citations: CBC 1133B.2.4.1; ADAAG 4.1.6(3)(d)(ii); ADAAG 4.5.2

Minimum Quantity: 1

Maximum Quantity: 1

**Minimum Estimated Cost:** \$2,500.00

**Maximum Estimated Cost:** \$2,500.00

Record Number:: 1485

Priority:

#### **Alternative \***

**Rec:**  
**(Where Available)**

**Full Rec:** Modify or replace the threshold to provide a smooth transition. The threshold should not exceed a beveled 1/2 inch. Provide a 60 inch level landing in the direction of the door swing.



## Verdugo Park

### Doors

**Finding:** The height of the threshold at the entrance door to the garage in the Maintenance Building is greater than 1/2 inch.



#### **Maintenance Building**

Citations: CBC 1133B.2.4.1; ADAAG 4.1.6(3)(d)(ii); ADAAG 4.5.2

Minimum Quantity: 1

Maximum Quantity: 1

**Minimum Estimated Cost:** \$2,500.00

**Maximum Estimated Cost:** \$2,500.00

Record Number:: 1486

Priority:

#### **Alternative \***

**Rec:**  
**(Where Available)**

**Full Rec:** Modify or replace the threshold to provide a smooth transition. The threshold should not exceed a beveled 1/2 inch. Provide a 60 inch level landing in the direction of the door swing.

### Doors

**Finding:** Interior passage doors have round doorknobs, which require twisting of the wrist to operate.



#### **Maintenance Building**

Citations: ADAAG 4.13.9

Minimum Quantity: 1

Maximum Quantity: 1

**Minimum Estimated Cost:** \$204.00

**Maximum Estimated Cost:** \$204.00

Record Number:: 1487

Priority:

#### **Alternative \***

**Rec:**  
**(Where Available)**

**Full Rec:** Interior door hardware (doorknobs) should be changed to accessible lever-handled lockset hardware (see ADAAG 4.13.9).

## Verdugo Park

### Doors

**Finding:** The door opening force for the exterior door is greater than 5 pounds of force.



#### **Skate Park Operations Office**

Citations: CBC 1133B.2.5; ADAAG 4.13.11

Minimum Quantity:	1
Maximum Quantity	1
<b>Minimum Estimated Cost:</b>	\$5.00
<b>Maximum Estimated Cost:</b>	\$5.00
Record Number::	1467
Priority:	

**Alternative \***  
**Rec:**  
**(Where Available)**

**Full Rec:** Adjust the closers on all exterior doors to a maximum door opening force of 5 pounds of force (see ADAAG 4.13.11 and CBC 1133B.2.5).

### Doors

**Finding:** The bottom 10 inches of the door does not provide a smooth, uninterrupted surface, or panel to allow the door to be opened by a wheelchair footrest without creating a trap or hazardous condition, due to the doorstop.



#### **Skate Park Operations Office**

Citations: CBC 1133B.2.6

Minimum Quantity:	1
Maximum Quantity	1
<b>Minimum Estimated Cost:</b>	\$0.00
<b>Maximum Estimated Cost:</b>	\$0.00
Record Number::	1468
Priority:	

**Alternative \***  
**Rec:**  
**(Where Available)**

**Full Rec:** Install a panel or replace the door to provide a smooth, uninterrupted surface for the bottom 10 inches of the door.

**Verdugo Park  
Work Stations**

**Finding:** The height of the Skate Park Operations Office reception counter is greater than 34 inches. The counter protrudes into the primary path of travel.

**Alternative \***  
**Rec:**  
**(Where Available)**

**Full Rec:** Lower at least a 36 inch wide portion of the reception counter to a maximum height between 28 and 34 inches (see CBC 1122B.4).



**Skate Park Operations Office**

Citations: CBC 1122B.4; ADAAG 7.2

Minimum Quantity:	1
Maximum Quantity	1
<b>Minimum Estimated Cost:</b>	<b>\$348.00</b>
<b>Maximum Estimated Cost:</b>	<b>\$348.00</b>
Record Number::	1489
Priority:	

**Work Stations**

**Finding:** The facility does not provide accessible signage at the reception counter that indicates there is assistance provided upon request.

**Alternative \***  
**Rec:**  
**(Where Available)**

**Full Rec:** Provide signage at the reception counter that states: "Assistance Is Available, Please Contact an Employee." The sign should contain the International Symbol of Accessibility.



**Skate Park Operations Office**

Citations: CBC 1117B.2.9.3; CBC 1104B.2.4; ADAAG 4.30

Minimum Quantity:	1
Maximum Quantity	1
<b>Minimum Estimated Cost:</b>	<b>\$58.00</b>
<b>Maximum Estimated Cost:</b>	<b>\$58.00</b>
Record Number::	1490
Priority:	

## Verdugo Park

### Visual and Audible Communications

**Finding:** There is no directional signage to the accessible entrance from the public right of way or other common use areas.

**Alternative \***  
**Rec:**  
**(Where Available)**

**Full Rec:** Install directional signage to each common area complying with CBC 1117B.5 and ADAAG 4.30.



#### ***Directional Signage***

Citations: CBC 1117B.5; ADAAG 4.30

Minimum Quantity:	1
Maximum Quantity:	1
<b>Minimum Estimated Cost:</b>	\$58.00
<b>Maximum Estimated Cost:</b>	\$58.00
Record Number::	1491
Priority:	

### Visual and Audible Communications

**Finding:** The main entrance does not have accessible signage mounted on the wall adjacent to the latch side of the door.

**Alternative \***  
**Rec:**  
**(Where Available)**

**Full Rec:** Install signage centered at 60 inches above the finished floor on the wall adjacent to the latch side of the entry doorway stating ENTRANCE from the outside and EXIT from the inside, with raised UPPERCASE letters between 5/8 inch and 2 inches in height and Grade 2 Braille characters. The sign shall comply with the finish and contrast requirements set forth in CBC 1117B.5 and ADAAG 4.30.5. Signage should be located where a person may approach within three inches of the sign without encountering protruding objects or standing within the swing of the door.



#### ***Food Service Building***

Citations: CBC 1117B.5; ADAAG 4.30

Minimum Quantity:	1
Maximum Quantity:	1
<b>Minimum Estimated Cost:</b>	\$58.00
<b>Maximum Estimated Cost:</b>	\$58.00
Record Number::	1471
Priority:	

## Verdugo Park

### Visual and Audible Communications

**Finding:** There is no signage with the International Symbol of Accessibility on the entrance door to the facility designating it as accessible.

**Alternative \***  
**Rec:**  
**(Where Available)**

**Full Rec:** The International Symbol of Accessibility shall be the standard used to identify facilities that are accessible to and usable by physically disabled persons (see CBC 1117B.5.1). All building entrances that are accessible to and usable by persons with disabilities shall be identified with an ISA symbol (see CBC 1117B.5.7).



**Food Service Building**

Citations: CBC 1117B.5.1

Minimum Quantity: 1

Maximum Quantity: 1

**Minimum Estimated Cost:** \$58.00

**Maximum Estimated Cost:** \$58.00

Record Number:: 1472

Priority:

### Visual and Audible Communications

**Finding:** There is no signage with the International Symbol of Accessibility on the entrance door to the facility designating it as accessible.

**Alternative \***  
**Rec:**  
**(Where Available)**

**Full Rec:** The International Symbol of Accessibility shall be the standard used to identify facilities that are accessible to and usable by physically disabled persons (see CBC 1117B.5.1). All building entrances that are accessible to and usable by persons with disabilities shall be identified with an ISA symbol (see CBC 1117B.5.7).



**Maintenance Building**

Citations: CBC 1117B.5.1

Minimum Quantity: 1

Maximum Quantity: 1

**Minimum Estimated Cost:** \$58.00

**Maximum Estimated Cost:** \$58.00

Record Number:: 1483

Priority:



## Verdugo Park

### Visual and Audible Communications

**Finding:** The main entrance does not have accessible signage mounted on the wall adjacent to the latch side of the door.



**Maintenance Building**

Citations: CBC 1117B.5; ADAAG 4.30

Minimum Quantity:	1
Maximum Quantity:	1
<b>Minimum Estimated Cost:</b>	\$58.00
<b>Maximum Estimated Cost:</b>	\$58.00
Record Number::	1484
Priority:	

**Alternative \***  
**Rec:**  
**(Where Available)**

**Full Rec:** Install signage centered at 60 inches above the finished floor on the wall adjacent to the latch side of the entry doorway stating ENTRANCE from the outside and EXIT from the inside, with raised UPPERCASE letters between 5/8 inch and 2 inches in height and Grade 2 Braille characters. The sign shall comply with the finish and contrast requirements set forth in CBC 1117B.5 and ADAAG 4.30.5. Signage should be located where a person may approach within three inches of the sign without encountering protruding objects or standing within the swing of the door.

### Visual and Audible Communications

**Finding:** Rooms do not have accessible signage mounted on the wall adjacent to the latch side of the doors.



**Room Signage**

Citations: CBC 1117B.5; ADAAG 4.30

Minimum Quantity:	1
Maximum Quantity:	1
<b>Minimum Estimated Cost:</b>	\$58.00
<b>Maximum Estimated Cost:</b>	\$58.00
Record Number::	1488
Priority:	

**Alternative \***  
**Rec:**  
**(Where Available)**

**Full Rec:** Install accessible signage identifying each room on the wall adjacent to the latch side of the doorway centered at 60 inches above the finished floor. Signage should be located where a person may approach within three inches of the sign without encountering protruding objects or standing within the swing of the door. Signs shall include raised UPPERCASE letters/numbers between 5/8 inch and 2 inches in height and Grade 2 Braille characters. Color and finish shall comply with CBC 1117B.5 and ADAAG 4.30.

## Verdugo Park

### Visual and Audible Communications

**Finding:** There is no signage with the International Symbol of Accessibility on the entrance door to the facility designating it as accessible.



**Skate Park Operations Office**

Citations: CBC 1117B.5.1

Minimum Quantity:	1
Maximum Quantity:	1
<b>Minimum Estimated Cost:</b>	\$58.00
<b>Maximum Estimated Cost:</b>	\$58.00

Record Number:: 1464

Priority:

#### Alternative \*

**Rec:**  
(Where Available)

**Full Rec:** The International Symbol of Accessibility shall be the standard used to identify facilities that are accessible to and usable by physically disabled persons (see CBC 1117B.5.1). All building entrances that are accessible to and usable by persons with disabilities shall be identified with an ISA symbol (see CBC 1117B.5.7).

### Visual and Audible Communications

**Finding:** The main entrance does not have accessible signage mounted on the wall adjacent to the latch side of the door.



**Skate Park Operations Office**

Citations: CBC 1117B.5; ADAAG 4.30

Minimum Quantity:	1
Maximum Quantity:	1
<b>Minimum Estimated Cost:</b>	\$58.00
<b>Maximum Estimated Cost:</b>	\$58.00

Record Number:: 1465

Priority:

#### Alternative \*

**Rec:**  
(Where Available)

**Full Rec:** Install signage centered at 60 inches above the finished floor on the wall adjacent to the latch side of the entry doorway stating ENTRANCE from the outside and EXIT from the inside, with raised UPPERCASE letters between 5/8 inch and 2 inches in height and Grade 2 Braille characters. The sign shall comply with the finish and contrast requirements set forth in CBC 1117B.5 and ADAAG 4.30.5. Signage should be located where a person may approach within three inches of the sign without encountering protruding objects or standing within the swing of the door.

# Verdugo Park

## Restrooms

**Finding:** There is no signage indicating accessibility on the latch side of the entry door of the restroom. There is no Title 24 gender use signage on the entrance door.



**Men's North Restrooms**

Citations: CBC 1115B.5; ADAAG 4.1.6; ADAAG 4.1.2(7); ADAAG 4.1.6(3)(e); ADAAG 4.30

Minimum Quantity:	1
Maximum Quantity:	1
<b>Minimum Estimated Cost:</b>	\$58.00
<b>Maximum Estimated Cost:</b>	\$58.00
Record Number::	1565
Priority:	

**Alternative \***  
**Rec:**  
**(Where Available)**

**Full Rec:** The restroom is designated accessible and should be made accessible for the facility. Post signage centered 60 inches above the ground surface on the latch side of the entrance door identifying the restroom as accessible upon completion of the following items (see CBC 1115B., ADAAG 4.1.2(7) and ADAAG 4.1.6(3)(e). Signage shall include Braille and raised lettering, the gender or unisex use symbol and the ISA symbol. Post Title 24 gender use signage on the door @ 60" o.c. a.f.f.

## Restrooms

**Finding:** There is no door on the stall designated to be accessible in the restroom.



**Men's North Restrooms**

Citations: CBC 1115B.7.1.3; ADAAG 4.13.9

Minimum Quantity:	1
Maximum Quantity:	1
<b>Minimum Estimated Cost:</b>	\$4,000.00
<b>Maximum Estimated Cost:</b>	\$4,000.00
Record Number::	1566
Priority:	

**Alternative \***  
**Rec:**  
**(Where Available)**

**Full Rec:** Install a door with appropriate accessible door hardware on the stall designated to be accessible in the restroom (see CBC 1115B.7.1.3 and ADAAG 4.13.9).

**Verdugo Park  
Restrooms**

**Finding:** The height of the back grab bar in the stall designated to be accessible of the restroom is less than 33 inches above the finished floor. The height of the side grab bar in the stall designated to be accessible of the restroom is greater than 33 inches above the finished floor.

**Alternative \***  
**Rec:**  
**(Where Available)**



**Men's North Restrooms**

Citations: CBC 1115B.8.1; ADAAG 4.26

**Full Rec:** Remount the side and back grab bar in the stall designated to be accessible in the restroom so that the height of the gripping surface is centered at 33 inches above finished floor. Grab bars must be able to support a point load of at least 250 pounds and shall be less than the allowable shear stress of the grab bar material.

Minimum Quantity:	1
Maximum Quantity	1
<b>Minimum Estimated Cost:</b>	<b>\$448.00</b>
<b>Maximum Estimated Cost:</b>	<b>\$448.00</b>
Record Number::	1567
Priority:	

**Restrooms**

**Finding:** The distance from the center of the toilet to the nearest side wall in the stall designated to be accessible in the restroom is less than 18 inches.

**Alternative \***  
**Rec:**  
**(Where Available)**



**Men's North Restrooms**

Citations: CBC 1115B.7.1.3 ADAAG 4.17.3

**Full Rec:** Relocate the toilet or stall side wall so that the distance from the centerline of the toilet to the nearest side wall in the stall designated to be accessible in the restroom is exactly 18 inches (see ADAAG Figure 28).

Minimum Quantity:	1
Maximum Quantity	1
<b>Minimum Estimated Cost:</b>	<b>\$1,143.00</b>
<b>Maximum Estimated Cost:</b>	<b>\$1,143.00</b>
Record Number::	1568
Priority:	

**Verdugo Park  
Restrooms**

**Finding:** The distance from the center of the lavatory to the adjacent side wall in the restroom is less than 18 inches.



**Men's North Restrooms**

**Alternative \***  
**Rec:**  
**(Where Available)**

**Full Rec:** Relocate the lavatory to provide a centerline of at least 18 inches. Make sure to provide at least 30 inches in width and 48 inch length of clear floor space to allow an accessible forward approach (see ADAAG 4.19.3).

Citations: ADAAG 4.19.3

Minimum Quantity: 1

Maximum Quantity: 1

**Minimum Estimated Cost:** \$0.00

**Maximum Estimated Cost:** \$0.00

Record Number:: 1569

Priority:

**Restrooms**

**Finding:** The pipes under the lavatory in the restroom do not provide protection against contact.



**Men's North Restrooms**

**Alternative \***  
**Rec:**  
**(Where Available)**

**Full Rec:** Insulate or otherwise configure pipes under the lavatory designated to be accessible in the restroom to protect against contact (see ADAAG 4.19.4). Make certain there are no sharp or abrasive surfaces under the lavatory.

Citations: ADAAG 4.19.4

Minimum Quantity: 1

Maximum Quantity: 1

**Minimum Estimated Cost:** \$39.00

**Maximum Estimated Cost:** \$39.00

Record Number:: 1570

Priority:



**Verdugo Park  
Restrooms**

**Finding:** The height of the controls and operating mechanisms for the hand dryer in the restroom is greater than 40 inches in height.

**Alternative \***  
**Rec:**  
**(Where Available)**

**Full Rec:** Relocate the hand dryer in the restroom to a maximum height of 40 inches for all the controls and operating mechanisms (see CBC 1115B.9.2).



**Men's North Restrooms**

Citations: CBC 1115B.9.2; ADAAG A4.27

Minimum Quantity:	1
Maximum Quantity:	1
<b>Minimum Estimated Cost:</b>	<b>\$277.00</b>
<b>Maximum Estimated Cost:</b>	<b>\$277.00</b>
Record Number::	1571
Priority:	

**Restrooms**

**Finding:** There is no signage indicating accessibility on the latch side of the entry door of the restroom. There is no Title 24 gender use signage on the entrance door.

**Alternative \***  
**Rec:**  
**(Where Available)**

**Full Rec:** The restroom is designated accessible and should be made accessible for the facility. Post signage centered 60 inches above the ground surface on the latch side of the entrance door identifying the restroom as accessible upon completion of the following items (see CBC 1115B., ADAAG 4.1.2(7) and ADAAG 4.1.6(3)(e)). Signage shall include Braille and raised lettering, the gender or unisex use symbol and the ISA symbol. Post Title 24 gender use signage on the door @ 60" o.c. a.f.f.



**Men's Restroom at Stengel Field**

Citations: CBC 1115B.5; ADAAG 4.1.6; ADAAG 4.1.2(7)); ADAAG 4.1.6(3)(e); ADAAG 4.30

Minimum Quantity:	1
Maximum Quantity:	1
<b>Minimum Estimated Cost:</b>	<b>\$58.00</b>
<b>Maximum Estimated Cost:</b>	<b>\$58.00</b>
Record Number::	1508
Priority:	

## Verdugo Park

### Restrooms

**Finding:** The door closing device limits the vertical headroom clearance to less than 80 inches in height and protrudes into the primary path of travel.

**Alternative \***

**Rec:**  
**(Where Available)**

**Full Rec:** Replace the door closing device with a device that fits above the door casing and does not protrude into the primary path of travel.



**Men's Restroom at Stengel Field**

Citations: CBC 1121B.2; ADAAG 4.4.2

Minimum Quantity:	1
Maximum Quantity	1
<b>Minimum Estimated Cost:</b>	\$308.00
<b>Maximum Estimated Cost:</b>	\$308.00
Record Number::	1509
Priority:	

### Restrooms

**Finding:** The urinal in the restroom does not provide a tapered, elongated rim. The height of the urinal rim is greater than 17 inches above the finished floor. The flush control valve on the urinal is greater than 44 inches above the finished floor.

**Alternative \***

**Rec:**  
**(Where Available)**

**Full Rec:** Replace the urinal designated to be accessible in the restroom with a wall-mounted or stall-type tapered, elongated rim unit complying with ADAAG 4.18.2. The height of the rim surface of the urinal designated to be accessible shall not exceed 17 inches above the finished floor and the flush control valve shall not exceed a height of 44 inches above the finished floor.



**Men's Restroom at Stengel Field**

Citations: ADAAG 4.18.2

Minimum Quantity:	1
Maximum Quantity	1
<b>Minimum Estimated Cost:</b>	\$951.00
<b>Maximum Estimated Cost:</b>	\$951.00
Record Number::	1510
Priority:	

## Verdugo Park

### Restrooms

**Finding:** There is insufficient clear floor space in the stall designated to be accessible in the restroom. There is no door on the stall designated to be accessible in the restroom.

**Alternative \***

**Rec:**  
(Where Available)

**Full Rec:** Modify or replace the stall designated to be accessible in the restroom so that it complies with ADAAG 4.17.3, CBC 1115B and CBC Figures 11B-1A and 1B. Standard accessible stalls require 60 inches in width with 56 inches depth for wall-mounted toilets or 59 inches depth for floor-mounted toilets to accommodate individuals in wheelchairs. The minimum width of a front-approach doorway shall provide at least 32 inches and a side-approach doorway shall provide at least 34 inches. The door shall swing outward, close automatically and provide accessible hardware.

### Restrooms

**Finding:** The vertical headroom clearance above the water closet is less than 80 inches in height.

**Alternative \***

**Rec:**  
(Where Available)

**Full Rec:** Install a barrier, where there is less than 80 inches of clear vertical headroom, to warn blind or visually impaired individuals. A planter or a permanent piece of furniture may be used (see CBC 1121B.2 and ADAAG 4.4.2).



**Men's Restroom at Stengel Field**

Citations: CBC 1115B; ADAAG 4.17.3; ADAAG A4.17.3

Minimum Quantity:	1
Maximum Quantity:	1
<b>Minimum Estimated Cost:</b>	<b>\$4,000.00</b>
<b>Maximum Estimated Cost:</b>	<b>\$4,000.00</b>
Record Number::	1511
Priority:	



**Men's Restroom at Stengel Field**

Citations: CBC 1121B.2; ADAAG 4.4.2

Minimum Quantity:	1
Maximum Quantity:	1
<b>Minimum Estimated Cost:</b>	<b>\$1,027.00</b>
<b>Maximum Estimated Cost:</b>	<b>\$1,027.00</b>
Record Number::	1512
Priority:	

## Verdugo Park

### Restrooms

**Finding:** The toilet paper dispenser in the stall designated to be accessible in the restroom interferes with the use of the side grab bar.



**Alternative \***  
**Rec:**  
**(Where Available)**

#### **Men's Restroom at Stengel Field**

Citations: CBC 1115B.9.3; ADAAG 4.16.6

**Full Rec:** Remount the toilet paper dispenser in the stall designated to be accessible in the restroom so that it does not interfere with the use of the side grab bar (see ADAAG 4.16.6 and Figure 29(b)). Toilet paper dispensers must allow continuous paper flow.

Minimum Quantity:	1
Maximum Quantity	1
<b>Minimum Estimated Cost:</b>	\$277.00
<b>Maximum Estimated Cost:</b>	\$277.00
Record Number::	1513
Priority:	

### Restrooms

**Finding:** The distance from the center of the toilet to the nearest side wall in the stall designated to be accessible in the restroom is greater than 18 inches.



**Alternative \***  
**Rec:**  
**(Where Available)**

#### **Men's Restroom at Stengel Field**

Citations: CBC 1115B.7.1.3 ADAAG 4.17.3

**Full Rec:** Relocate the toilet or stall side wall so that the distance from the centerline of the toilet to the nearest side wall in the stall designated to be accessible in the restroom is exactly 18 inches (see ADAAG Figure 28).

Minimum Quantity:	1
Maximum Quantity	1
<b>Minimum Estimated Cost:</b>	\$1,143.00
<b>Maximum Estimated Cost:</b>	\$1,143.00
Record Number::	1514
Priority:	

**Verdugo Park  
Restrooms**

**Finding:** The pipes under the lavatory in the restroom do not provide protection against contact.

**Alternative \***  
**Rec:**  
**(Where Available)**

**Full Rec:** Insulate or otherwise configure pipes under the lavatory designated to be accessible in the restroom to protect against contact (see ADAAG 4.19.4). Make certain there are no sharp or abrasive surfaces under the lavatory.



**Men's Restroom at Stengel Field**

Citations: ADAAG 4.19.4

Minimum Quantity:	1
Maximum Quantity:	1
<b>Minimum Estimated Cost:</b>	<b>\$39.00</b>
<b>Maximum Estimated Cost:</b>	<b>\$39.00</b>
Record Number::	1515
Priority:	

**Restrooms**

**Finding:** The bottom edge of the reflecting surface of the mirror in the restroom is greater than 40 inches above the finished floor.

**Alternative \***  
**Rec:**  
**(Where Available)**

**Full Rec:** Lower the mirror in the restroom so that the bottom edge of the reflecting surface is no higher than 40 inches above the finished floor and the topmost portion of the reflecting surface extends at least 74 inches above the finished floor (see ADAAG A4.19.6). A single, full-length mirror is recommended since it can accommodate all people. Make certain to provide a minimum clear floor space in front of the mirror of 30 inches in width and 48 inches in length.



**Men's Restroom at Stengel Field**

Citations: ADAAG A4.19.6; CBC 1115B.9.1.2; ADAAG 4.19.6

Minimum Quantity:	1
Maximum Quantity:	1
<b>Minimum Estimated Cost:</b>	<b>\$291.00</b>
<b>Maximum Estimated Cost:</b>	<b>\$291.00</b>
Record Number::	1516
Priority:	



## Verdugo Park

### Restrooms

**Finding:** There is no signage indicating accessibility on the latch side of the entry door of the restroom. There is no Title 24 gender use signage on the entrance door.

**Alternative \***  
**Rec:**  
**(Where Available)**



**Men's Restroom in the High School Locker Room at Stengel Field**

**Full Rec:** The restroom is designated accessible and should be made accessible for the facility. Post signage centered 60 inches above the ground surface on the latch side of the entrance door identifying the restroom as accessible upon completion of the following items (see CBC 1115B., ADAAG 4.1.2(7) and ADAAG 4.1.6(3)(e)). Signage shall include Braille and raised lettering, the gender or unisex use symbol and the ISA symbol. Post Title 24 gender use signage on the door @ 60" o.c. a.f.f.

Citations: CBC 1115B.5; ADAAG 4.1.6; ADAAG 4.1.2(7); ADAAG 4.1.6(3)(e); ADAAG 4.30

Minimum Quantity:	1
Maximum Quantity	1
<b>Minimum Estimated Cost:</b>	\$58.00
<b>Maximum Estimated Cost:</b>	\$58.00
Record Number::	1530
Priority:	

### Restrooms

**Finding:** The clear opening width of the entrance doorway to the restroom is less than 32 inches.

**Alternative \***  
**Rec:**  
**(Where Available)**



**Men's Restroom in the High School Locker Room at Stengel Field**

**Full Rec:** Widen the entrance doorway to the restroom to provide a clear opening width of at least 32 inches when the door is open 90 degrees (see ADAAG 4.13.5).

Citations: ADAAG 4.13.5

Minimum Quantity:	1
Maximum Quantity	1
<b>Minimum Estimated Cost:</b>	\$750.00
<b>Maximum Estimated Cost:</b>	\$750.00
Record Number::	1531
Priority:	

## Verdugo Park

### Restrooms

**Finding:** The urinal in the restroom is floor mounted and does not provide a tapered, elongated rim. The flush control valve on the urinal is greater than 44 inches above the finished floor.



**Men's Restroom in the High School Locker Room at Stengel Field**

Citations: ADAAG 4.18.2

Minimum Quantity:	1
Maximum Quantity:	1
<b>Minimum Estimated Cost:</b>	\$951.00
<b>Maximum Estimated Cost:</b>	\$951.00

Record Number:: 1532

Priority:

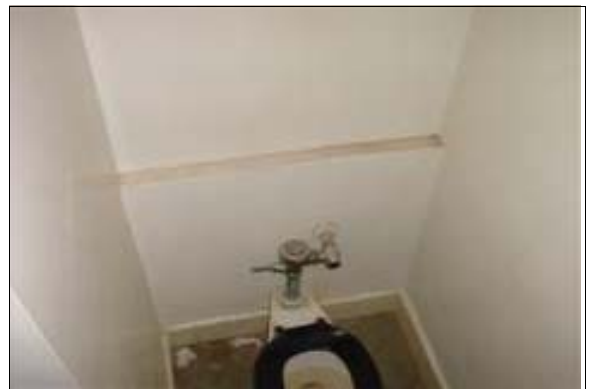
#### Alternative \*

**Rec:**  
(Where Available)

**Full Rec:** Replace the urinal designated to be accessible in the restroom with a wall-mounted or stall-type tapered, elongated rim unit complying with ADAAG 4.18.2. The height of the rim surface of the urinal designated to be accessible shall not exceed 17 inches above the finished floor and the flush control valve shall not exceed a height of 44 inches above the finished floor.

### Restrooms

**Finding:** There is insufficient clear floor space in the stall designated to be accessible in the restroom. The stall door to the stall designated to be accessible in the restroom swings inward limiting the clear floor space in the stall designated to be accessible. The door to the stall designated to be accessible in the restroom does not close automatically or have accessible hardware.



**Men's Restroom in the High School Locker Room at Stengel Field**

Citations: CBC 1115B; ADAAG 4.17.3; ADAAG A4.17.3

Minimum Quantity:	1
Maximum Quantity:	1
<b>Minimum Estimated Cost:</b>	\$4,000.00
<b>Maximum Estimated Cost:</b>	\$4,000.00

Record Number:: 1533

Priority:

#### Alternative \*

**Rec:**  
(Where Available)

**Full Rec:** Modify or replace the stall designated to be accessible in the restroom so that it complies with ADAAG 4.17.3, CBC 1115B and CBC Figures 11B-1A and 1B. Standard accessible stalls require 60 inches in width with 56 inches depth for wall-mounted toilets or 59 inches depth for floor-mounted toilets to accommodate individuals in wheelchairs. The minimum width of a front-approach doorway shall provide at least 32 inches and a side-approach doorway shall provide at least 34 inches. The door shall swing outward, close automatically and provide accessible hardware.

## Verdugo Park

### Restrooms

**Finding:** The height of the coat hook on the stall door designated to be accessible in the restroom is greater than 48 inches above the floor surface.

**Alternative \***  
**Rec:**  
**(Where Available)**

**Full Rec:** Remount the coat hook on the stall door designated to be accessible in the restroom to a maximum height of 48 inches above the floor surface.



**Men's Restroom in the High School Locker Room at Stengel Field**

Citations: CBC 1115B.9.2; ADAAG A4.27

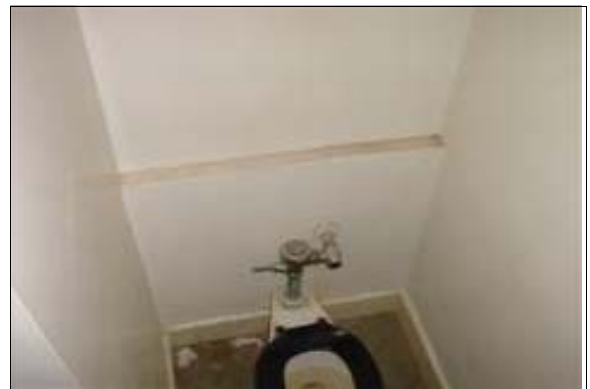
Minimum Quantity:	1
Maximum Quantity:	1
<b>Minimum Estimated Cost:</b>	\$277.00
<b>Maximum Estimated Cost:</b>	\$277.00
Record Number::	1534
Priority:	

### Restrooms

**Finding:** There are no grab bars in the stall designated to be accessible in the restroom.

**Alternative \***  
**Rec:**  
**(Where Available)**

**Full Rec:** Install one 36-inch back grab bar and one 42/48-inch side grab bar in the stall designated to be accessible in the restroom. Grab bars shall be mounted at a height of 33 inches above the finished floor. Grab bars must be able to support a point load of at least 250 pounds and shall be less than the allowable shear stress of the grab bar material.



**Men's Restroom in the High School Locker Room at Stengel Field**

Citations: CBC 1115B.8; ADAAG 4.26

Minimum Quantity:	1
Maximum Quantity:	1
<b>Minimum Estimated Cost:</b>	\$531.00
<b>Maximum Estimated Cost:</b>	\$531.00
Record Number::	1535
Priority:	

## Verdugo Park

### Restrooms

**Finding:** The height of the toilet seat in the stall designated to be accessible in the restroom is less than 17 inches above the finished floor.



**Men's Restroom in the High School Locker Room at Stengel Field**

Citations: ADAAG 4.16.3

Minimum Quantity:	1
Maximum Quantity:	1
<b>Minimum Estimated Cost:</b>	<b>\$1,707.00</b>
<b>Maximum Estimated Cost:</b>	<b>\$1,707.00</b>

Record Number:: 1536

Priority:

**Alternative \***

**Rec:  
(Where Available)**

**Full Rec:** Remove or modify the toilet in the stall designated to be accessible in the restroom so that the seat height is between 17 inches and 19 inches above the finished floor (see ADAAG 4.16.3).

### Restrooms

**Finding:** The faucet controls on the lavatory in the restroom require tight grasping, pinching, or twisting of the wrist and are not accessible.



**Men's Restroom in the High School Locker Room at Stengel Field**

Citations: ADAAG 4.19.5

Minimum Quantity:	1
Maximum Quantity:	1
<b>Minimum Estimated Cost:</b>	<b>\$392.00</b>
<b>Maximum Estimated Cost:</b>	<b>\$392.00</b>

Record Number:: 1537

Priority:

**Alternative \***

**Rec:  
(Where Available)**

**Full Rec:** Install faucet controls complying with ADAAG 4.19.5 on the lavatory designated to be accessible in the restroom. Lever-operated, push-type, touch-type or electronically controlled mechanisms are acceptable elements (see ADAAG 4.19.5). If self-closing valves are used the faucet shall remain open for at least 10 seconds.

**Verdugo Park  
Restrooms**

**Finding:** The pipes under the lavatory in the restroom do not provide protection against contact.

**Alternative \***  
**Rec:**  
**(Where Available)**

**Full Rec:** Insulate or otherwise configure pipes under the lavatory designated to be accessible in the restroom to protect against contact (see ADAAG 4.19.4). Make certain there are no sharp or abrasive surfaces under the lavatory.



**Men's Restroom in the High School Locker Room at Stengel Field**

Citations: ADAAG 4.19.4

Minimum Quantity:	1
Maximum Quantity	1
<b>Minimum Estimated Cost:</b>	<b>\$39.00</b>
<b>Maximum Estimated Cost:</b>	<b>\$39.00</b>

Record Number:: 1538

Priority:

**Restrooms**

**Finding:** The distance from the center of the lavatory to the adjacent side wall in the restroom is less than 18 inches.

**Alternative \***  
**Rec:**  
**(Where Available)**

**Full Rec:** Relocate the lavatory to provide a centerline of at least 18 inches. Make sure to provide at least 30 inches in width and 48 inch length of clear floor space to allow an accessible forward approach (see ADAAG 4.19.3).



**Men's Restroom in the High School Locker Room at Stengel Field**

Citations: ADAAG 4.19.3

Minimum Quantity:	1
Maximum Quantity	1
<b>Minimum Estimated Cost:</b>	<b>\$0.00</b>
<b>Maximum Estimated Cost:</b>	<b>\$0.00</b>

Record Number:: 1539

Priority:



## Verdugo Park

### Restrooms

**Finding:** The bottom edge of the reflecting surface of the mirror in the restroom is greater than 40 inches above the finished floor.

**Alternative \***

**Rec:**  
**(Where Available)**

**Full Rec:** Lower the mirror in the restroom so that the bottom edge of the reflecting surface is no higher than 40 inches above the finished floor and the topmost portion of the reflecting surface extends at least 74 inches above the finished floor (see ADAAG A4.19.6). A single, full-length mirror is recommended since it can accommodate all people. Make certain to provide a minimum clear floor space in front of the mirror of 30 inches in width and 48 inches in length.

### Restrooms

**Finding:** The height of the controls and operating mechanisms for the paper towel dispenser in the restroom is greater than 40 inches.

**Alternative \***

**Rec:**  
**(Where Available)**

**Full Rec:** Relocate the paper towel dispenser in the restroom to a maximum height of 40 inches for all the controls and operating mechanisms (see CBC 1115B.9.2).



**Men's Restroom in the High School Locker Room at Stengel Field**

Citations: ADAAG A4.19.6; CBC 1115B.9.1.2; ADAAG 4.19.6

Minimum Quantity:	1
Maximum Quantity	1
<b>Minimum Estimated Cost:</b>	\$291.00
<b>Maximum Estimated Cost:</b>	\$291.00
Record Number::	1540
Priority:	



**Men's Restroom in the High School Locker Room at Stengel Field**

Citations: CBC 1115B.9.2; ADAAG A4.27

Minimum Quantity:	1
Maximum Quantity	1
<b>Minimum Estimated Cost:</b>	\$277.00
<b>Maximum Estimated Cost:</b>	\$277.00
Record Number::	1541
Priority:	

# Verdugo Park

## Restrooms

**Finding:** There is no signage indicating accessibility on the latch side of the entry door of the restroom. The gender use signage at the entrance to the restroom is not mounted on the entrance door and is not centered at 60 inches above the floor surface.

**Alternative \***  
**Rec:**  
**(Where Available)**

**Full Rec:** The restroom is designated accessible and should be made accessible for the facility. Post signage centered 60 inches above the ground surface on the latch side of the entrance door identifying the restroom as accessible upon completion of the following items (see CBC 1115B., ADAAG 4.1.2(7) and ADAAG 4.1.6(3)(e)). Signage shall include Braille and raised lettering, the gender or unisex use symbol and the ISA symbol. Post Title 24 gender use signage on the door @ 60" o.c. a.f.f.



**Men's South Restroom**

Citations: CBC 1115B.5; ADAAG 4.1.6; ADAAG 4.1.2(7)); ADAAG 4.1.6(3)(e); ADAAG 4.30

Minimum Quantity:	1
Maximum Quantity	1
<b>Minimum Estimated Cost:</b>	\$58.00
<b>Maximum Estimated Cost:</b>	\$58.00
Record Number::	1492
Priority:	

## Restrooms

**Finding:** The urinal in the restroom does not provide a tapered, elongated rim. The height of the urinal rim is greater than 17 inches above the finished floor.

**Alternative \***  
**Rec:**  
**(Where Available)**

**Full Rec:** Replace the urinal designated to be accessible in the restroom with a wall-mounted or stall-type tapered, elongated rim unit complying with ADAAG 4.18.2. The height of the rim surface of the urinal designated to be accessible shall not exceed 17 inches above the finished floor and the flush control valve shall not exceed a height of 44 inches above the finished floor.



**Men's South Restroom**

Citations: ADAAG 4.18.2	
Minimum Quantity:	1
Maximum Quantity	1
<b>Minimum Estimated Cost:</b>	\$951.00
<b>Maximum Estimated Cost:</b>	\$951.00
Record Number::	1493
Priority:	

**Verdugo Park  
Restrooms**

**Finding:** There are six stalls located in the multiple accommodation restroom.



**Men's South Restroom**

Citations: CBC 1115B.7.1.4; ADAAG A4.17.3; ADAAG 4.22.4

Minimum Quantity:	1
Maximum Quantity:	1
<b>Minimum Estimated Cost:</b>	<b>\$4,000.00</b>
<b>Maximum Estimated Cost:</b>	<b>\$4,000.00</b>
Record Number::	1494
Priority:	

**Alternative \***  
**Rec:**  
**(Where Available)**

**Full Rec:** Create an accessible 36-inch wide alternate stall in addition to the required accessible standard stall in the multiple accommodation restroom. The accessible 36-inch wide alternate stall shall include an outward swinging, self-closing door and parallel side grab bars and shall provide at least 66 inches in length for a stall with a wall-mounted toilet or at least 69 inches in length for a stall with a floor-mounted toilet.

**Restrooms**

**Finding:** The door in the stall designated to be accessible in the restroom does not have appropriate accessible hardware.



**Men's South Restroom**

Citations: CBC 1115B.7.1.3; ADAAG 4.13.9

Minimum Quantity:	1
Maximum Quantity:	1
<b>Minimum Estimated Cost:</b>	<b>\$189.00</b>
<b>Maximum Estimated Cost:</b>	<b>\$189.00</b>
Record Number::	1495
Priority:	

**Alternative \***  
**Rec:**  
**(Where Available)**

**Full Rec:** Install a loop or U-shaped handle immediately below the latch hardware on the door to the stall designated to be accessible in the restroom (see CBC 1115B.7.1.3 and ADAAG 4.13.9). Lever-operated or push-type mechanisms may also be used. The latch shall be flip-over style, sliding or other hardware not requiring grasping or twisting.

## Verdugo Park

### Restrooms

**Finding:** The height of the back grab bar in the stall designated to be accessible of the restroom is greater than 33 inches above the finished floor.



**Men's South Restroom**

Citations: CBC 1115B.8.1; ADAAG 4.26

Minimum Quantity: 1

Maximum Quantity: 1

**Minimum Estimated Cost:** \$448.00

**Maximum Estimated Cost:** \$448.00

Record Number:: 1496

Priority:

**Alternative \***

**Rec:  
(Where  
Available)**

**Full Rec:** Remount the back grab bar in the stall designated to be accessible in the restroom so that the height of the gripping surface is centered at 33 inches above finished floor. Grab bars must be able to support a point load of at least 250 pounds and shall be less than the allowable shear stress of the grab bar material.

### Restrooms

**Finding:** The flush control on the toilet in the stall designated to be accessible in the restroom is not on the wide (approach) side of the toilet.



**Men's South Restroom**

Citations: ADAAG 4.16.5; ADAAG 4.27.4

Minimum Quantity: 1

Maximum Quantity: 1

**Minimum Estimated Cost:** \$127.00

**Maximum Estimated Cost:** \$127.00

Record Number:: 1497

Priority:

**Alternative \***

**Rec:  
(Where  
Available)**

**Full Rec:** Relocate the flush control on the toilet in the stall designated to be accessible in the restroom so that it is on the wide (approach) side of the toilet area (see ADAAG 4.16.5). Flush controls shall be hand-operated or automatic mechanisms.

## Verdugo Park

### Restrooms

**Finding:** The distance from the center of the toilet to the nearest side wall in the stall designated to be accessible in the restroom is greater than 18 inches.

**Alternative \***

**Rec:**  
**(Where Available)**

**Full Rec:** Relocate the toilet or stall side wall so that the distance from the centerline of the toilet to the nearest side wall in the stall designated to be accessible in the restroom is exactly 18 inches (see ADAAG Figure 28).



**Men's South Restroom**

Citations: CBC 1115B.7.1.3 ADAAG 4.17.3

Minimum Quantity:	1
Maximum Quantity	1
<b>Minimum Estimated Cost:</b>	\$1,143.00
<b>Maximum Estimated Cost:</b>	\$1,143.00
Record Number::	1498
Priority:	

### Restrooms

**Finding:** The pipes under the lavatory in the restroom do not provide protection against contact.

**Alternative \***

**Rec:**  
**(Where Available)**

**Full Rec:** Insulate or otherwise configure pipes under the lavatory designated to be accessible in the restroom to protect against contact (see ADAAG 4.19.4). Make certain there are no sharp or abrasive surfaces under the lavatory.



**Men's South Restroom**

Citations: ADAAG 4.19.4

Minimum Quantity:	1
Maximum Quantity	1
<b>Minimum Estimated Cost:</b>	\$39.00
<b>Maximum Estimated Cost:</b>	\$39.00
Record Number::	1499
Priority:	



## Verdugo Park

### Restrooms

**Finding:** The height of the controls and operating mechanisms for the hand dryer in the restroom is greater than 40 inches in height.



**Men's South Restroom**

Citations: CBC 1115B.9.2; ADAAG A4.27

Minimum Quantity:	1
Maximum Quantity:	1
<b>Minimum Estimated Cost:</b>	<b>\$277.00</b>
<b>Maximum Estimated Cost:</b>	<b>\$277.00</b>
Record Number::	1500
Priority:	

**Alternative \***  
**Rec:**  
**(Where Available)**

**Full Rec:** Relocate the hand dryer in the restroom to a maximum height of 40 inches for all the controls and operating mechanisms (see CBC 1115B.9.2).

### Restrooms

**Finding:** There is no signage indicating accessibility on the latch side of the entry door of the restroom. There is no Title 24 gender use signage on the entrance door.



**Unisex Restroom at the Maintenance Building**

Citations: CBC 1115B.5; ADAAG 4.1.6; ADAAG 4.1.2(7); ADAAG 4.1.6(3)(e); ADAAG 4.30

Minimum Quantity:	1
Maximum Quantity:	1
<b>Minimum Estimated Cost:</b>	<b>\$58.00</b>
<b>Maximum Estimated Cost:</b>	<b>\$58.00</b>
Record Number::	1542
Priority:	

**Alternative \***  
**Rec:**  
**(Where Available)**

**Full Rec:** The restroom is designated accessible and should be made accessible for the facility. Post signage centered 60 inches above the ground surface on the latch side of the entrance door identifying the restroom as accessible upon completion of the following items (see CBC 1115B., ADAAG 4.1.2(7) and ADAAG 4.1.6(3)(e). Signage shall include Braille and raised lettering, the gender or unisex use symbol and the ISA symbol. Post Title 24 gender use signage on the door @ 60" o.c. a.f.f.

**Verdugo Park  
Restrooms**

**Finding:** The clear opening width of the entrance doorway to the restroom is less than 32 inches.

**Alternative \***  
**Rec:**  
**(Where Available)**



***Unisex Restroom at the Maintenance Building***

**Full Rec:** Widen the entrance doorway to the restroom to provide a clear opening width of at least 32 inches when the door is open 90 degrees (see ADAAG 4.13.5).

Citations: ADAAG 4.13.5

Minimum Quantity:	1
Maximum Quantity	1
<b>Minimum Estimated Cost:</b>	<b>\$750.00</b>
<b>Maximum Estimated Cost:</b>	<b>\$750.00</b>

Record Number:: 1543

Priority:

**Restrooms**

**Finding:** The height of the urinal rim in the restroom is greater than 17 inches above the finished floor.

**Alternative \***  
**Rec:**  
**(Where Available)**



***Unisex Restroom at the Maintenance Building***

**Full Rec:** Lower the urinal designated to be accessible in the restroom so that the rim height is not more than 17 inches above the finished floor.

Citations: ADAAG 4.18.2

Minimum Quantity:	1
Maximum Quantity	1
<b>Minimum Estimated Cost:</b>	<b>\$1,097.00</b>
<b>Maximum Estimated Cost:</b>	<b>\$1,097.00</b>

Record Number:: 1544

Priority:

**Verdugo Park  
Restrooms**

**Finding:** The height of the urinal flush control in the restroom is greater than 44 inches above the finished floor.

**Alternative \***  
**Rec:**  
**(Where Available)**



***Unisex Restroom at the Maintenance Building***

**Full Rec:** Lower the flush control valve on the urinal designated to be accessible in the restroom to a height not greater than 44 inches above the finished floor (see ADAAG 4.18.4).

Citations: ADAAG 4.18.4

Minimum Quantity:	1
Maximum Quantity	1
<b>Minimum Estimated Cost:</b>	\$951.00
<b>Maximum Estimated Cost:</b>	\$951.00

Record Number:: 1545

Priority:

**Restrooms**

**Finding:** There are no grab bars in the restroom.

**Alternative \***  
**Rec:**  
**(Where Available)**



***Unisex Restroom at the Maintenance Building***

**Full Rec:** Install one 36-inch back grab bar and one 42/48-inch side grab bar in the restroom. Grab bars shall be mounted at a height of 33 inches above the finished floor. Grab bars must be able to support a point load of at least 250 pounds and shall be less than the allowable shear stress of the grab bar material.

Citations: CBC 1115B.8; ADAAG 4.17.6; ADAAG 4.26.3

Minimum Quantity:	1
Maximum Quantity	1
<b>Minimum Estimated Cost:</b>	\$531.00
<b>Maximum Estimated Cost:</b>	\$531.00

Record Number:: 1546

Priority:

## Verdugo Park

### Restrooms

**Finding:** The height of the toilet seat in the restroom is less than 17 inches above the finished floor.



**Unisex Restroom at the Maintenance Building**

Citations: ADAAG 4.16.3

Minimum Quantity:	1
Maximum Quantity:	1
<b>Minimum Estimated Cost:</b>	\$1,707.00
<b>Maximum Estimated Cost:</b>	\$1,707.00

Record Number:: 1547

Priority:

#### Alternative \*

**Rec:**  
(Where Available)

**Full Rec:** Remove or modify the toilet in the restroom so that the seat height is between 17 inches and 19 inches above the finished floor (see ADAAG 4.16.3).

### Restrooms

**Finding:** The distance from the center of the toilet to the nearest side wall in the restroom is less than 18 inches.



**Unisex Restroom at the Maintenance Building**

Citations: CBC 1115B.7.1.3 ADAAG 4.17.3

Minimum Quantity:	1
Maximum Quantity:	1
<b>Minimum Estimated Cost:</b>	\$1,143.00
<b>Maximum Estimated Cost:</b>	\$1,143.00

Record Number:: 1548

Priority:

#### Alternative \*

**Rec:**  
(Where Available)

**Full Rec:** Relocate the toilet so that the distance from the centerline of the toilet to the nearest side wall in the restroom is exactly 18 inches (see ADAAG Figure 28).

**Verdugo Park  
Restrooms**

**Finding:** The faucet controls on the lavatory in the restroom require tight grasping, pinching, or twisting of the wrist and are not accessible.

**Alternative \***  
**Rec:**  
**(Where Available)**

**Full Rec:** Install faucet controls complying with ADAAG 4.19.5 on the lavatory designated to be accessible in the restroom. Lever-operated, push-type, touch-type or electronically controlled mechanisms are acceptable elements (see ADAAG 4.19.5). If self-closing valves are used the faucet shall remain open for at least 10 seconds.



***Unisex Restroom at the Maintenance Building***

Citations: ADAAG 4.19.5

Minimum Quantity:	1
Maximum Quantity	1
<b>Minimum Estimated Cost:</b>	<b>\$392.00</b>
<b>Maximum Estimated Cost:</b>	<b>\$392.00</b>

Record Number:: 1549

Priority:

**Restrooms**

**Finding:** The height of the rim surface of the lavatory designated to be accessible in the restroom is greater than 34 inches above the finished floor.

**Alternative \***  
**Rec:**  
**(Where Available)**

**Full Rec:** Relocate or replace the lavatory designated to be accessible in the restroom to provide a maximum rim surface height of no greater than 34 inches above the finished floor (see ADAAG 4.19.2).



***Unisex Restroom at the Maintenance Building***

Citations: ADAAG 4.19.2

Minimum Quantity:	1
Maximum Quantity	1
<b>Minimum Estimated Cost:</b>	<b>\$1,286.00</b>
<b>Maximum Estimated Cost:</b>	<b>\$1,286.00</b>

Record Number:: 1550

Priority:



**Verdugo Park  
Restrooms**

**Finding:** The pipes under the lavatory in the restroom do not provide protection against contact.

**Alternative \***  
**Rec:**  
**(Where Available)**



**Unisex Restroom at the Maintenance Building**

**Full Rec:** Insulate or otherwise configure pipes under the lavatory designated to be accessible in the restroom to protect against contact (see ADAAG 4.19.4). Make certain there are no sharp or abrasive surfaces under the lavatory.

Citations: ADAAG 4.19.4

Minimum Quantity:	1
Maximum Quantity	1
<b>Minimum Estimated Cost:</b>	<b>\$39.00</b>
<b>Maximum Estimated Cost:</b>	<b>\$39.00</b>

Record Number:: 1551

Priority:

**Restrooms**

**Finding:** The bottom edge of the reflecting surface of the mirror in the restroom is greater than 40 inches above the finished floor.

**Alternative \***  
**Rec:**  
**(Where Available)**



**Unisex Restroom at the Maintenance Building**

**Full Rec:** Lower the mirror in the restroom so that the bottom edge of the reflecting surface is no higher than 40 inches above the finished floor and the topmost portion of the reflecting surface extends at least 74 inches above the finished floor (see ADAAG A4.19.6). A single, full-length mirror is recommended since it can accommodate all people. Make certain to provide a minimum clear floor space in front of the mirror of 30 inches in width and 48 inches in length.

Citations: ADAAG A4.19.6; CBC 1115B.9.1.2; ADAAG 4.19.6

Minimum Quantity:	1
Maximum Quantity	1
<b>Minimum Estimated Cost:</b>	<b>\$291.00</b>
<b>Maximum Estimated Cost:</b>	<b>\$291.00</b>

Record Number:: 1552

Priority:

## Verdugo Park

### Restrooms

**Finding:** The height of the controls and operating mechanisms for the paper towel dispenser in the restroom is greater than 40 inches.

**Alternative \***  
**Rec:**  
**(Where Available)**



**Unisex Restroom at the Maintenance Building**

**Full Rec:** Relocate the paper towel dispenser in the restroom to a maximum height of 40 inches for all the controls and operating mechanisms (see CBC 1115B.9.2).

Citations: CBC 1115B.9.2; ADAAG A4.27

Minimum Quantity:	1
Maximum Quantity:	1
<b>Minimum Estimated Cost:</b>	<b>\$277.00</b>
<b>Maximum Estimated Cost:</b>	<b>\$277.00</b>
Record Number::	1553
Priority:	

### Restrooms

**Finding:** There is no signage indicating accessibility on the latch side of the entry door of the restroom. There is no Title 24 gender use signage on the entrance door.

**Alternative \***  
**Rec:**  
**(Where Available)**



**Unisex Restroom in the Caretaker's House**

**Full Rec:** The restroom is designated accessible and should be made accessible for the facility. Post signage centered 60 inches above the ground surface on the latch side of the entrance door identifying the restroom as accessible upon completion of the following items (see CBC 1115B., ADAAG 4.1.2(7) and ADAAG 4.1.6(3)(e). Signage shall include Braille and raised lettering, the gender or unisex use symbol and the ISA symbol. Post Title 24 gender use signage on the door @ 60" o.c. a.f.f.

Citations: CBC 1115B.5; ADAAG 4.1.6; ADAAG 4.1.2(7)); ADAAG 4.1.6(3)(e); ADAAG 4.30

Minimum Quantity:	1
Maximum Quantity:	1
<b>Minimum Estimated Cost:</b>	<b>\$58.00</b>
<b>Maximum Estimated Cost:</b>	<b>\$58.00</b>
Record Number::	1572
Priority:	

## Verdugo Park

### Restrooms

**Finding:** The clear opening width of the entrance doorway to the restroom is less than 32 inches.



***Unisex Restroom in the Caretaker's House***

Citations: ADAAG 4.13.5

Minimum Quantity: 1

Maximum Quantity: 1

**Minimum Estimated Cost:** \$750.00

**Maximum Estimated Cost:** \$750.00

Record Number:: 1573

Priority:

#### Alternative \*

**Rec:**  
**(Where Available)**

**Full Rec:** Widen the entrance doorway to the restroom to provide a clear opening width of at least 32 inches when the door is open 90 degrees (see ADAAG 4.13.5).

### Restrooms

**Finding:** The entrance door to the restroom has a round doorknob that requires tight grasping or twisting of the wrist to operate.



***Unisex Restroom in the Caretaker's House***

Citations: ADAAG 4.13.9

Minimum Quantity: 1

Maximum Quantity: 1

**Minimum Estimated Cost:** \$204.00

**Maximum Estimated Cost:** \$204.00

Record Number:: 1574

Priority:

#### Alternative \*

**Rec:**  
**(Where Available)**

**Full Rec:** Replace the door hardware mounted on the restroom complying with ADAAG 4.13.9. Make certain accessible door hardware is mounted no higher than 48 inches above the finished floor.

## Verdugo Park

### Restrooms

**Finding:** This restroom is not accessible and cannot be easily altered. There is not sufficient clear floor space in the restroom to accommodate an individual in a wheelchair.

**Alternative \***

**Rec:**  
**(Where Available)**

**Full Rec:** Consult a design professional to modify the restroom. One or more walls may need to be moved to provide sufficient clear floor space to inscribe a 60-inch diameter turning radius in the restroom to accommodate an individual in a wheelchair.



**Unisex Restroom in the Caretaker's House**

Citations: CBC 1115B.7.2; ADAAG 4.16.2

Minimum Quantity:	1
Maximum Quantity:	1
<b>Minimum Estimated Cost:</b>	\$0.00
<b>Maximum Estimated Cost:</b>	\$0.00
Record Number::	1575
Priority:	

### Restrooms

**Finding:** There are no grab bars in the restroom.

**Alternative \***

**Rec:**  
**(Where Available)**

**Full Rec:** Install one 36-inch back grab bar and one 42/48-inch side grab bar in the restroom. Grab bars shall be mounted at a height of 33 inches above the finished floor. Grab bars must be able to support a point load of at least 250 pounds and shall be less than the allowable shear stress of the grab bar material.



**Unisex Restroom in the Caretaker's House**

Citations: CBC 1115B.8; ADAAG 4.17.6; ADAAG 4.26.3

Minimum Quantity:	1
Maximum Quantity:	1
<b>Minimum Estimated Cost:</b>	\$531.00
<b>Maximum Estimated Cost:</b>	\$531.00
Record Number::	1576
Priority:	

## Verdugo Park

### Restrooms

**Finding:** The distance from the center of the toilet to the nearest side wall in the restroom is less than 18 inches.



**Unisex Restroom in the Caretaker's House**

Citations: CBC 1115B.7.1.3 ADAAG 4.17.3

Minimum Quantity: 1

Maximum Quantity: 1

**Minimum Estimated Cost:** \$1,143.00

**Maximum Estimated Cost:** \$1,143.00

Record Number:: 1577

Priority:

#### Alternative \*

**Rec:**  
**(Where Available)**

**Full Rec:** Relocate the toilet so that the distance from the centerline of the toilet to the nearest side wall in the restroom is exactly 18 inches (see ADAAG Figure 28).

### Restrooms

**Finding:** The lavatory in the restroom is in an enclosed cabinet, thereby preventing an accessible forward approach.



**Unisex Restroom in the Caretaker's House**

Citations: ADAAG 4.19.2

Minimum Quantity: 1

Maximum Quantity: 1

**Minimum Estimated Cost:** \$420.00

**Maximum Estimated Cost:** \$420.00

Record Number:: 1578

Priority:

#### Alternative \*

**Rec:**  
**(Where Available)**

**Full Rec:** Lavatories in restrooms must provide clear floor space in front of the lavatory for an accessible forward approach and shall provide at least 29 inches clear knee space and a minimum of nine inches clear toe space (see ADAAG 4.19.2). If neither clear floor space and knee and toe clearance can be provided, remove the lavatory cabinet and replace with an accessible wall-mounted lavatory unit.



## Verdugo Park

### Restrooms

**Finding:** The faucet controls on the lavatory in the restroom require tight grasping, pinching, or twisting of the wrist and are not accessible.



**Unisex Restroom in the Caretaker's House**

Citations: ADAAG 4.19.5

Minimum Quantity: 1

Maximum Quantity: 1

**Minimum Estimated Cost:** \$392.00

**Maximum Estimated Cost:** \$392.00

Record Number:: 1579

Priority:

#### Alternative \*

**Rec:**  
(Where Available)

**Full Rec:** Install faucet controls complying with ADAAG 4.19.5 on the lavatory designated to be accessible in the restroom. Lever-operated, push-type, touch-type or electronically controlled mechanisms are acceptable elements (see ADAAG 4.19.5). If self-closing valves are used the faucet shall remain open for at least 10 seconds.

### Restrooms

**Finding:** The pipes under the lavatory in the restroom do not provide protection against contact.



**Unisex Restroom in the Caretaker's House**

Citations: ADAAG 4.19.4

Minimum Quantity: 1

Maximum Quantity: 1

**Minimum Estimated Cost:** \$39.00

**Maximum Estimated Cost:** \$39.00

Record Number:: 1580

Priority:

#### Alternative \*

**Rec:**  
(Where Available)

**Full Rec:** Insulate or otherwise configure pipes under the lavatory designated to be accessible in the restroom to protect against contact (see ADAAG 4.19.4). Make certain there are no sharp or abrasive surfaces under the lavatory.

## Verdugo Park

### Restrooms

**Finding:** There is a bathtub in the restroom. There is no accessible tub seat or accessible grab bars in the bathtub.

**Alternative \***

**Rec:**  
(Where Available)

**Full Rec:** Install an accessible tub seat and grab bars that comply with CA T24 1115B.6.1.3 and ADA 4.20.4 (figure 11).



**Unisex Restroom in the Caretaker's House**

Citations: CA T24 1115B.6 thru CA T24 1115B.6.1.6; ADA 4.20.4

Minimum Quantity: 1

Maximum Quantity: 1

**Minimum Estimated Cost:** \$60.00

**Maximum Estimated Cost:** \$60.00

Record Number:: 1581

Priority:

### Restrooms

**Finding:** There is no signage indicating accessibility on the latch side of the entry door of the restroom. There is no Title 24 gender use signage on the entrance door.

**Alternative \***

**Rec:**  
(Where Available)

**Full Rec:** The restroom is designated accessible and should be made accessible for the facility. Post signage centered 60 inches above the ground surface on the latch side of the entrance door identifying the restroom as accessible upon completion of the following items (see CBC 1115B., ADAAG 4.1.2(7) and ADAAG 4.1.6(3)(e)). Signage shall include Braille and raised lettering, the gender or unisex use symbol and the ISA symbol. Post Title 24 gender use signage on the door @ 60" o.c. a.f.f.



**Women's North Restrooms**

Citations: CBC 1115B.5; ADAAG 4.1.6; ADAAG 4.1.2(7); ADAAG 4.1.6(3)(e); ADAAG 4.30

Minimum Quantity: 1

Maximum Quantity: 1

**Minimum Estimated Cost:** \$58.00

**Maximum Estimated Cost:** \$58.00

Record Number:: 1554

Priority:

**Verdugo Park  
Restrooms**

**Finding:** The door to the stall designated to be accessible in the restroom does not close automatically or have accessible hardware.

**Alternative \***  
**Rec:**  
**(Where Available)**

**Full Rec:** Provide an automatic door closer, spring hinge, pull bar or accessible handle mounted on the inside of the stall door to the stall designated to be accessible in the restroom (see ADAAG A4.17.5). Accessible hardware on the inside and outside of the stall designated to be accessible door shall be equipped with a loop or U-shaped handle mounted immediately below the latch. The latch shall be flip-over style, sliding or other hardware not requiring grasping or twisting. Make certain that the inside and outside door hardware is mounted no more than 48 inches above the finished floor (see CBC 115B.7.1.3 and ADAAG 4.13.9).

**Restrooms**

**Finding:** The height of the back grab bar in the stall designated to be accessible of the restroom is less than 33 inches above the finished floor. The height of the side grab bar in the stall designated to be accessible of the restroom is greater than 33 inches above the finished floor.

**Alternative \***  
**Rec:**  
**(Where Available)**

**Full Rec:** Remount the side and back grab bar in the stall designated to be accessible in the restroom so that the height of the gripping surface is centered at 33 inches above finished floor. Grab bars must be able to support a point load of at least 250 pounds and shall be less than the allowable shear stress of the grab bar material.



**Women's North Restrooms**

Citations: ADAAG A4.17.5

Minimum Quantity:	1
Maximum Quantity:	1
<b>Minimum Estimated Cost:</b>	\$269.00
<b>Maximum Estimated Cost:</b>	\$269.00
Record Number::	1555
Priority:	



**Women's North Restrooms**

Citations: CBC 1115B.8.1; ADAAG 4.26

Minimum Quantity:	1
Maximum Quantity:	1
<b>Minimum Estimated Cost:</b>	\$448.00
<b>Maximum Estimated Cost:</b>	\$448.00
Record Number::	1556
Priority:	

## Verdugo Park

### Restrooms

**Finding:** The distance from the end of the back grab bar to the nearest side wall in the stall designated to be accessible of the restroom is greater than 6 inches.



**Women's North Restrooms**

Citations: ADAAG 4.26; CBC 1115B.8.1

Minimum Quantity:	1
Maximum Quantity:	1
<b>Minimum Estimated Cost:</b>	\$448.00
<b>Maximum Estimated Cost:</b>	\$448.00

Record Number:: 1557

Priority:

**Alternative \***

**Rec:**  
**(Where Available)**

**Full Rec:** Remount the back grab bar in the stall designated to be accessible in the restroom so that it is not more than 6 inches from the nearest side wall (see ADAAG 4.26 and CBC Figure 11B.1A-1C). Grab bars must be able to support a point load of at least 250 pounds and shall be less than the allowable shear stress of the grab bar material.

### Restrooms

**Finding:** The side grab bar in the stall designated to be accessible in the restroom does not extend 54 inches from the back wall.



**Women's North Restrooms**

Citations: CBC 1115B.8.1; ADAAG 4.26

Minimum Quantity:	1
Maximum Quantity:	1
<b>Minimum Estimated Cost:</b>	\$531.00
<b>Maximum Estimated Cost:</b>	\$531.00

Record Number:: 1558

Priority:

**Alternative \***

**Rec:**  
**(Where Available)**

**Full Rec:** The front end of the grab bar shall extend at least 54 inches from the back wall and the back end of the grab bar shall be mounted within 12 inches from the back wall. Grab bars must be able to support a point load of at least 250 pounds and shall be less than the allowable shear stress of the grab bar material.

## Verdugo Park

### Restrooms

**Finding:** The flush control on the toilet in the stall designated to be accessible in the restroom is not on the wide (approach) side of the toilet.

**Alternative \***  
**Rec:**  
**(Where Available)**

**Full Rec:** Relocate the flush control on the toilet in the stall designated to be accessible in the restroom so that it is on the wide (approach) side of the toilet area (see ADAAG 4.16.5). Flush controls shall be hand-operated or automatic mechanisms.



**Women's North Restrooms**

Citations: ADAAG 4.16.5; ADAAG 4.27.4

Minimum Quantity:	1
Maximum Quantity	1
<b>Minimum Estimated Cost:</b>	\$127.00
<b>Maximum Estimated Cost:</b>	\$127.00
Record Number::	1559
Priority:	

### Restrooms

**Finding:** The distance from the center of the toilet to the nearest side wall in the stall designated to be accessible in the restroom is less than 18 inches.

**Alternative \***  
**Rec:**  
**(Where Available)**

**Full Rec:** Relocate the toilet or stall side wall so that the distance from the centerline of the toilet to the nearest side wall in the stall designated to be accessible in the restroom is exactly 18 inches (see ADAAG Figure 28).



**Women's North Restrooms**

Citations: CBC 1115B.7.1.3 ADAAG 4.17.3

Minimum Quantity:	1
Maximum Quantity	1
<b>Minimum Estimated Cost:</b>	\$1,143.00
<b>Maximum Estimated Cost:</b>	\$1,143.00
Record Number::	1560
Priority:	



## Verdugo Park

### Restrooms

**Finding:** The feminine product disposal in the stall designated to be accessible in the restroom interferes with the use of the side grab bar.

**Alternative \***  
**Rec:**  
**(Where Available)**

**Full Rec:** Remount the feminine product disposal in the stall designated to be accessible in the restroom so that it does not interfere with the use of the side grab bar.



#### **Women's North Restrooms**

Citations: CBC 1115B.9.3; ADAAG 4.16.6

Minimum Quantity:	1
Maximum Quantity:	1
<b>Minimum Estimated Cost:</b>	<b>\$277.00</b>
<b>Maximum Estimated Cost:</b>	<b>\$277.00</b>
Record Number::	1561
Priority:	

### Restrooms

**Finding:** The knee depth space under the lavatory designated to be accessible in the restroom is less than 27 inches at 8 inches under the lavatory apron.

**Alternative \***  
**Rec:**  
**(Where Available)**

**Full Rec:** Raise or replace the lavatory designated to be accessible in the restroom to provide at least 27 inches at 8 inches under the apron. Make sure to provide at least 29 inches of clear knee space between the finished floor and bottom of the lavatory apron and a rim surface height no greater than 34 inches (see ADAAG 4.19.2).



#### **Women's North Restrooms**

Citations: ADAAG 4.19.2

Minimum Quantity:	1
Maximum Quantity:	1
<b>Minimum Estimated Cost:</b>	<b>\$1,286.00</b>
<b>Maximum Estimated Cost:</b>	<b>\$1,286.00</b>
Record Number::	1562
Priority:	

**Verdugo Park  
Restrooms**

**Finding:** The pipes under the lavatory in the restroom do not provide protection against contact.

**Alternative \***  
**Rec:**  
**(Where Available)**

**Full Rec:** Insulate or otherwise configure pipes under the lavatory designated to be accessible in the restroom to protect against contact (see ADAAG 4.19.4). Make certain there are no sharp or abrasive surfaces under the lavatory.



**Women's North Restrooms**

Citations: ADAAG 4.19.4

Minimum Quantity:	1
Maximum Quantity:	1
<b>Minimum Estimated Cost:</b>	<b>\$39.00</b>
<b>Maximum Estimated Cost:</b>	<b>\$39.00</b>
Record Number::	1563
Priority:	

**Restrooms**

**Finding:** The height of the controls and operating mechanisms for the hand dryer in the restroom is greater than 40 inches in height.

**Alternative \***  
**Rec:**  
**(Where Available)**

**Full Rec:** Relocate the hand dryer in the restroom to a maximum height of 40 inches for all the controls and operating mechanisms (see CBC 1115B.9.2).



**Women's North Restrooms**

Citations: CBC 1115B.9.2; ADAAG A4.27

Minimum Quantity:	1
Maximum Quantity:	1
<b>Minimum Estimated Cost:</b>	<b>\$277.00</b>
<b>Maximum Estimated Cost:</b>	<b>\$277.00</b>
Record Number::	1564
Priority:	

## Verdugo Park

### Restrooms

**Finding:** There is no signage indicating accessibility on the latch side of the entry door of the restroom. There is no Title 24 gender use signage on the entrance door.

#### Alternative \*

**Rec:**  
(Where Available)

**Full Rec:** The restroom is designated accessible and should be made accessible for the facility. Post signage centered 60 inches above the ground surface on the latch side of the entrance door identifying the restroom as accessible upon completion of the following items (see CBC 1115B., ADAAG 4.1.2(7) and ADAAG 4.1.6(3)(e). Signage shall include Braille and raised lettering, the gender or unisex use symbol and the ISA symbol. Post Title 24 gender use signage on the door @ 60" o.c. a.f.f.



#### **Women's Restroom at Stengel Field**

Citations: CBC 1115B.5; ADAAG 4.1.6; ADAAG 4.1.2(7); ADAAG 4.1.6(3)(e); ADAAG 4.30

Minimum Quantity:	1
Maximum Quantity	1
<b>Minimum Estimated Cost:</b>	\$58.00
<b>Maximum Estimated Cost:</b>	\$58.00
Record Number::	1517
Priority:	

### Restrooms

**Finding:** The door closing device limits the vertical headroom clearance to less than 80 inches in height and protrudes into the primary path of travel.

#### Alternative \*

**Rec:**  
(Where Available)

**Full Rec:** Replace the door closing device with a device that fits above the door casing and does not protrude into the primary path of travel.



#### **Women's Restroom at Stengel Field**

Citations: CBC 1121B.2; ADAAG 4.4.2

Minimum Quantity:	1
Maximum Quantity	1
<b>Minimum Estimated Cost:</b>	\$308.00
<b>Maximum Estimated Cost:</b>	\$308.00
Record Number::	1518
Priority:	

## Verdugo Park

### Restrooms

**Finding:** There is insufficient clear floor space in the stall designated to be accessible in the restroom. The door to the stall designated to be accessible in the restroom does not close automatically or have accessible hardware.

**Alternative \***

**Rec:**  
**(Where Available)**

**Full Rec:** Modify or replace the stall designated to be accessible in the restroom so that it complies with ADAAG 4.17.3, CBC 1115B and CBC Figures 11B-1A and 1B. Standard accessible stalls require 60 inches in width with 56 inches depth for wall-mounted toilets or 59 inches depth for floor-mounted toilets to accommodate individuals in wheelchairs. The minimum width of a front-approach doorway shall provide at least 32 inches and a side-approach doorway shall provide at least 34 inches. The door shall swing outward, close automatically and provide accessible hardware.

### Restrooms

**Finding:** The height of the coat hook on the stall door designated to be accessible in the restroom is greater than 48 inches above the floor surface.

**Alternative \***

**Rec:**  
**(Where Available)**

**Full Rec:** Remount the coat hook on the stall door designated to be accessible in the restroom to a maximum height of 48 inches above the floor surface.



**Women's Restroom at Stengel Field**

Citations: CBC 1115B; ADAAG 4.17.3; ADAAG A4.17.3

Minimum Quantity:	1
Maximum Quantity:	1
<b>Minimum Estimated Cost:</b>	\$4,000.00
<b>Maximum Estimated Cost:</b>	\$4,000.00
Record Number::	1519
Priority:	



**Women's Restroom at Stengel Field**

Citations: CBC 1115B.9.2; ADAAG A4.27

Minimum Quantity:	1
Maximum Quantity:	1
<b>Minimum Estimated Cost:</b>	\$277.00
<b>Maximum Estimated Cost:</b>	\$277.00
Record Number::	1520
Priority:	

## Verdugo Park

### Restrooms

**Finding:** The side grab bar in the stall designated to be accessible in the restroom does not extend 54 inches from the back wall.

**Alternative \***

**Rec:**  
(Where Available)

**Full Rec:** The front end of the grab bar shall extend at least 54 inches from the back wall and the back end of the grab bar shall be mounted within 12 inches from the back wall. Grab bars must be able to support a point load of at least 250 pounds and shall be less than the allowable shear stress of the grab bar material.



**Women's Restroom at Stengel Field**

Citations: CBC 1115B.8.1; ADAAG 4.26

Minimum Quantity:	1
Maximum Quantity	1
<b>Minimum Estimated Cost:</b>	<b>\$531.00</b>
<b>Maximum Estimated Cost:</b>	<b>\$531.00</b>
Record Number::	1521
Priority:	

### Restrooms

**Finding:** The toilet paper dispenser in the stall designated to be accessible in the restroom interferes with the use of the side grab bar.

**Alternative \***

**Rec:**  
(Where Available)

**Full Rec:** Remount the toilet paper dispenser in the stall designated to be accessible in the restroom so that it does not interfere with the use of the side grab bar (see ADAAG 4.16.6 and Figure 29(b)). Toilet paper dispensers must allow continuous paper flow.



**Women's Restroom at Stengel Field**

Citations: CBC 1115B.9.3; ADAAG 4.16.6

Minimum Quantity:	1
Maximum Quantity	1
<b>Minimum Estimated Cost:</b>	<b>\$277.00</b>
<b>Maximum Estimated Cost:</b>	<b>\$277.00</b>
Record Number::	1522
Priority:	



## Verdugo Park

### Restrooms

**Finding:** The flush control on the toilet in the stall designated to be accessible in the restroom is not on the wide (approach) side of the toilet.

**Alternative \***

**Rec:**  
**(Where Available)**

**Full Rec:** Relocate the flush control on the toilet in the stall designated to be accessible in the restroom so that it is on the wide (approach) side of the toilet area (see ADAAG 4.16.5). Flush controls shall be hand-operated or automatic mechanisms.



**Women's Restroom at Stengel Field**

Citations: ADAAG 4.16.5; ADAAG 4.27.4

Minimum Quantity:	1
Maximum Quantity	1
<b>Minimum Estimated Cost:</b>	\$127.00
<b>Maximum Estimated Cost:</b>	\$127.00
Record Number::	1523
Priority:	

### Restrooms

**Finding:** The distance from the center of the toilet to the nearest side wall in the stall designated to be accessible in the restroom is greater than 18 inches.

**Alternative \***

**Rec:**  
**(Where Available)**

**Full Rec:** Relocate the toilet or stall side wall so that the distance from the centerline of the toilet to the nearest side wall in the stall designated to be accessible in the restroom is exactly 18 inches (see ADAAG Figure 28).



**Women's Restroom at Stengel Field**

Citations: CBC 1115B.7.1.3 ADAAG 4.17.3

Minimum Quantity:	1
Maximum Quantity	1
<b>Minimum Estimated Cost:</b>	\$1,143.00
<b>Maximum Estimated Cost:</b>	\$1,143.00
Record Number::	1524
Priority:	

## Verdugo Park

### Restrooms

**Finding:** The vertical headroom clearance above the water closet is less than 80 inches in height.



**Alternative \***  
**Rec:**  
**(Where Available)**

#### **Women's Restroom at Stengel Field**

Citations: CBC 1121B.2; ADAAG 4.4.2

**Full Rec:** Install a barrier, where there is less than 80 inches of clear vertical headroom, to warn blind or visually impaired individuals. A planter or a permanent piece of furniture may be used (see CBC 1121B.2 and ADAAG 4.4.2).

Minimum Quantity:	1
Maximum Quantity:	1
<b>Minimum Estimated Cost:</b>	\$1,027.00
<b>Maximum Estimated Cost:</b>	\$1,027.00

Record Number:: 1525

Priority:

### Restrooms

**Finding:** The pipes under the lavatory in the restroom do not provide protection against contact.



**Alternative \***  
**Rec:**  
**(Where Available)**

#### **Women's Restroom at Stengel Field**

Citations: ADAAG 4.19.4

**Full Rec:** Insulate or otherwise configure pipes under the lavatory designated to be accessible in the restroom to protect against contact (see ADAAG 4.19.4). Make certain there are no sharp or abrasive surfaces under the lavatory.

Minimum Quantity:	1
Maximum Quantity:	1
<b>Minimum Estimated Cost:</b>	\$39.00
<b>Maximum Estimated Cost:</b>	\$39.00

Record Number:: 1526

Priority:

**Verdugo Park  
Restrooms**

**Finding:** The distance from the center of the lavatory to the adjacent side wall in the restroom is less than 18 inches.



**Women's Restroom at Stengel Field**

Citations: ADAAG 4.19.3

Minimum Quantity:	1
Maximum Quantity:	1
<b>Minimum Estimated Cost:</b>	<b>\$0.00</b>
<b>Maximum Estimated Cost:</b>	<b>\$0.00</b>

Record Number:: 1527

Priority:

**Alternative \***  
**Rec:**  
**(Where Available)**

**Full Rec:** Relocate the lavatory to provide a centerline of at least 18 inches. Make sure to provide at least 30 inches in width and 48 inch length of clear floor space to allow an accessible forward approach (see ADAAG 4.19.3).

**Restrooms**

**Finding:** The bottom edge of the reflecting surface of the mirror in the restroom is greater than 40 inches above the finished floor.



**Women's Restroom at Stengel Field**

Citations: ADAAG A4.19.6; CBC 1115B.9.1.2; ADAAG 4.19.6

Minimum Quantity:	1
Maximum Quantity:	1
<b>Minimum Estimated Cost:</b>	<b>\$291.00</b>
<b>Maximum Estimated Cost:</b>	<b>\$291.00</b>

Record Number:: 1528

Priority:

**Alternative \***  
**Rec:**  
**(Where Available)**

**Full Rec:** Lower the mirror in the restroom so that the bottom edge of the reflecting surface is no higher than 40 inches above the finished floor and the topmost portion of the reflecting surface extends at least 74 inches above the finished floor (see ADAAG A4.19.6). A single, full-length mirror is recommended since it can accommodate all people. Make certain to provide a minimum clear floor space in front of the mirror of 30 inches in width and 48 inches in length.

## Verdugo Park

### Restrooms

**Finding:** The height of the controls and operating mechanisms for the hand dryer in the restroom is greater than 40 inches in height.

**Alternative \***

**Rec:**  
(Where Available)

**Full Rec:** Relocate the hand dryer in the restroom to a maximum height of 40 inches for all the controls and operating mechanisms (see CBC 1115B.9.2).



**Women's Restroom at Stengel Field**

Citations: CBC 1115B.9.2; ADAAG A4.27

Minimum Quantity:	1
Maximum Quantity	1
<b>Minimum Estimated Cost:</b>	<b>\$277.00</b>
<b>Maximum Estimated Cost:</b>	<b>\$277.00</b>
Record Number::	1529
Priority:	

### Restrooms

**Finding:** There is no signage indicating accessibility on the latch side of the entry door of the restroom. The gender use signage at the entrance to the restroom is not mounted on the entrance door.

**Alternative \***

**Rec:**  
(Where Available)

**Full Rec:** The restroom is designated accessible and should be made accessible for the facility. Post signage centered 60 inches above the ground surface on the latch side of the entrance door identifying the restroom as accessible upon completion of the following items (see CBC 1115B., ADAAG 4.1.2(7) and ADAAG 4.1.6(3)(e)). Signage shall include Braille and raised lettering, the gender or unisex use symbol and the ISA symbol. Post Title 24 gender use signage on the door @ 60" o.c. a.f.f.



**Women's South Restroom**

Citations: CBC 1115B.5; ADAAG 4.1.6; ADAAG 4.1.2(7)); ADAAG 4.1.6(3)(e); ADAAG 4.30

Minimum Quantity:	1
Maximum Quantity	1
<b>Minimum Estimated Cost:</b>	<b>\$58.00</b>
<b>Maximum Estimated Cost:</b>	<b>\$58.00</b>
Record Number::	1501
Priority:	

**Verdugo Park  
Restrooms**

**Finding:** There are nine stalls located in the multiple accommodation restroom.

**Alternative \***  
**Rec:**  
**(Where Available)**

**Full Rec:** Create an accessible 36-inch wide alternate stall in addition to the required accessible standard stall in the multiple accommodation restroom. The accessible 36-inch wide alternate stall shall include an outward swinging, self-closing door and parallel side grab bars and shall provide at least 66 inches in length for a stall with a wall-mounted toilet or at least 69 inches in length for a stall with a floor-mounted toilet.



**Women's South Restroom**

Citations: CBC 1115B.7.1.4; ADAAG A4.17.3; ADAAG 4.22.4

Minimum Quantity:	1
Maximum Quantity:	1
<b>Minimum Estimated Cost:</b>	<b>\$4,000.00</b>
<b>Maximum Estimated Cost:</b>	<b>\$4,000.00</b>
Record Number::	1502
Priority:	

**Restrooms**

**Finding:** The door in the stall designated to be accessible in the restroom does not have appropriate accessible hardware.

**Alternative \***  
**Rec:**  
**(Where Available)**

**Full Rec:** Install a loop or U-shaped handle immediately below the latch hardware on the door to the stall designated to be accessible in the restroom (see CBC 1115B.7.1.3 and ADAAG 4.13.9). Lever-operated or push-type mechanisms may also be used. The latch shall be flip-over style, sliding or other hardware not requiring grasping or twisting.



**Women's South Restroom**

Citations: CBC 1115B.7.1.3; ADAAG 4.13.9

Minimum Quantity:	1
Maximum Quantity:	1
<b>Minimum Estimated Cost:</b>	<b>\$189.00</b>
<b>Maximum Estimated Cost:</b>	<b>\$189.00</b>
Record Number::	1503
Priority:	



## Verdugo Park

### Restrooms

**Finding:** The height of the side and back grab bar in the stall designated to be accessible of the restroom is greater than 33 inches above the finished floor.

**Alternative \***

**Rec:**  
**(Where Available)**

**Full Rec:** Remount the side and back grab bar in the stall designated to be accessible in the restroom so that the height of the gripping surface is centered at 33 inches above finished floor. Grab bars must be able to support a point load of at least 250 pounds and shall be less than the allowable shear stress of the grab bar material.



**Women's South Restroom**

Citations: CBC 1115B.8.1; ADAAG 4.26

Minimum Quantity:	1
Maximum Quantity	1
<b>Minimum Estimated Cost:</b>	\$448.00
<b>Maximum Estimated Cost:</b>	\$448.00

Record Number:: 1504

Priority:

### Restrooms

**Finding:** The pipes under the lavatory in the restroom do not provide protection against contact.

**Alternative \***

**Rec:**  
**(Where Available)**

**Full Rec:** Insulate or otherwise configure pipes under the lavatory designated to be accessible in the restroom to protect against contact (see ADAAG 4.19.4). Make certain there are no sharp or abrasive surfaces under the lavatory.



**Women's South Restroom**

Citations: ADAAG 4.19.4

Minimum Quantity:	1
Maximum Quantity	1
<b>Minimum Estimated Cost:</b>	\$39.00
<b>Maximum Estimated Cost:</b>	\$39.00

Record Number:: 1505

Priority:



## Verdugo Park

### Restrooms

**Finding:** The bottom edge of the reflecting surface of the mirror in the restroom is greater than 40 inches above the finished floor.



**Women's South Restroom**

Citations: ADAAG A4.19.6; CBC 1115B.9.1.2; ADAAG 4.19.6

Minimum Quantity:	1
Maximum Quantity	1
<b>Minimum Estimated Cost:</b>	\$291.00
<b>Maximum Estimated Cost:</b>	\$291.00
Record Number::	1506
Priority:	

#### Alternative \*

**Rec:**  
(Where Available)

**Full Rec:** Lower the mirror in the restroom so that the bottom edge of the reflecting surface is no higher than 40 inches above the finished floor and the topmost portion of the reflecting surface extends at least 74 inches above the finished floor (see ADAAG A4.19.6). A single, full-length mirror is recommended since it can accommodate all people. Make certain to provide a minimum clear floor space in front of the mirror of 30 inches in width and 48 inches in length.

### Restrooms

**Finding:** The height of the controls and operating mechanisms for the hand dryer in the restroom is greater than 40 inches in height.



**Women's South Restroom**

Citations: CBC 1115B.9.2; ADAAG A4.27

Minimum Quantity:	1
Maximum Quantity	1
<b>Minimum Estimated Cost:</b>	\$277.00
<b>Maximum Estimated Cost:</b>	\$277.00
Record Number::	1507
Priority:	

#### Alternative \*

**Rec:**  
(Where Available)

**Full Rec:** Relocate the hand dryer in the restroom to a maximum height of 40 inches for all the controls and operating mechanisms (see CBC 1115B.9.2).

**Verdugo Park  
Drinking Fountains**

**Finding:** There are five drinking fountains on primary paths of travel.

**Alternative \***  
**Rec:**  
**(Where Available)**

**Full Rec:** Fifty percent of the drinking fountains on primary paths of travel shall be accessible (see CBC 1117B.1 and ADAAG 4.15). Install a "high-low" fountain design to comply with both state and federal requirement. Fountains not located in alcoves need side rails or wing walls on both sides.



Citations: CBC 1117B.1; ADAAG 4.15

Minimum Quantity:	1
Maximum Quantity	1
<b>Minimum Estimated Cost:</b>	\$0.00
<b>Maximum Estimated Cost:</b>	\$0.00
Record Number::	1582
Priority:	

**Drinking Fountains**

**Finding:** The drinking fountain is not a "high-low" design.

**Alternative \***  
**Rec:**  
**(Where Available)**

**Full Rec:** Fifty percent of the drinking fountains on primary paths of travel shall be accessible (see CBC 1117B.1 and ADAAG 4.15). Install a "high-low" fountain design to comply with both state and federal requirements and install a side rail or wing wall next to each side of the fountain.



***Drinking Fountain at Stengel Field***

Citations: CBC 1117B.1; ADAAG 4.15

Minimum Quantity:	1
Maximum Quantity	1
<b>Minimum Estimated Cost:</b>	\$2,216.00
<b>Maximum Estimated Cost:</b>	\$2,216.00
Record Number::	1584
Priority:	

**Verdugo Park  
Drinking Fountains**

**Finding:** The drinking fountain is not a "high-low" design.

**Alternative \***  
**Rec:**  
**(Where Available)**

**Full Rec:** Fifty percent of the drinking fountains on primary paths of travel shall be accessible (see CBC 1117B.1 and ADAAG 4.15). Install a "high-low" fountain design to comply with both state and federal requirements and install a side rail or wing wall next to each side of the fountain.



***Drinking Fountain at the Baseball Field***

Citations: CBC 1117B.1; ADAAG 4.15

Minimum Quantity:	1
Maximum Quantity	1
<b>Minimum Estimated Cost:</b>	<b>\$2,216.00</b>
<b>Maximum Estimated Cost:</b>	<b>\$2,216.00</b>
Record Number::	1586
Priority:	

**Drinking Fountains**

**Finding:** The drinking fountain is not a "high-low" design. The spout outlet height is greater than 36 inches.

**Alternative \***  
**Rec:**  
**(Where Available)**

**Full Rec:** Fifty percent of the drinking fountains on primary paths of travel shall be accessible (see CBC 1117B.1 and ADAAG 4.15). Install a "high-low" fountain design to comply with both state and federal requirements and install a side rail or wing wall next to each side of the fountain. The height of the spout outlet shall not exceed 36 inches in height.



***Drinking Fountain at the North Restrooms***

Citations: CBC 1117B.1; ADAAG 4.15

Minimum Quantity:	1
Maximum Quantity	1
<b>Minimum Estimated Cost:</b>	<b>\$2,216.00</b>
<b>Maximum Estimated Cost:</b>	<b>\$2,216.00</b>
Record Number::	1587
Priority:	

**Verdugo Park  
Drinking Fountains**

**Finding:** The drinking fountain is not a "high-low" design. There is less than 27 inches knee clearance height.

**Alternative \***  
**Rec:**  
**(Where Available)**

**Full Rec:** Fifty percent of the drinking fountains on primary paths of travel shall be accessible (see CBC 1117B.1 and ADAAG 4.15). Install a "high-low" fountain design to comply with both state and federal requirements and install a side rail or wing wall next to each side of the fountain. Wall-mounted drinking fountains shall provide a minimum knee clearance height of 27 inches, 30 inches in width and between 18 inches and 19 inches in fountain depth.

**Commons/Lunch Area**

**Finding:** There is no accessible route to the picnic tables in the outdoor dining area at the north end of the park. The surface under and around the outdoor dining area picnic tables is grass, preventing access of individuals with mobility impairments.

**Alternative \***  
**Rec:**  
**(Where Available)**

**Full Rec:** Install a 48-inch wide path to the picnic tables in the outdoor dining area that provides a smooth, stable, firm and slip resistant surface. Provide a maneuvering space sufficient to provide a 60-inch diameter turning radius adjacent to at least one of the picnic tables in the outdoor dining area.



***Drinking Fountains at the Outdoor Dining Area Next to the Food Service Building***

Citations: CBC 1117B.1; ADAAG 4.15

Minimum Quantity:	1
Maximum Quantity	2
<b>Minimum Estimated Cost:</b>	<b>\$2,216.00</b>
<b>Maximum Estimated Cost:</b>	<b>\$4,432.00</b>
Record Number::	1583
Priority:	



***Outdoor Dining Area at the North End of the Park***

Citations: ADAAG 5.8; ADAAG A4.2.5; ADAAG A4.2.6

Minimum Quantity:	1
Maximum Quantity	1
<b>Minimum Estimated Cost:</b>	<b>\$1,440.00</b>
<b>Maximum Estimated Cost:</b>	<b>\$1,440.00</b>
Record Number::	1436
Priority:	

**Verdugo Park  
Commons/Lunch Area**

**Finding:** The knee space at the tables in the outdoor dining area is less than 19 inches deep.

**Alternative \***  
**Rec:**  
**(Where Available)**



**Outdoor Dining Area at the North End of the Park**

Citations: CBC 1122B.3; ADAAG 4.32.2; ADAAG 4.32.5(2)

Minimum Quantity:	1
Maximum Quantity	1
<b>Minimum Estimated Cost:</b>	<b>\$174.00</b>
<b>Maximum Estimated Cost:</b>	<b>\$174.00</b>

Record Number:: 1590

Priority:

**Full Rec:** Modify or replace one of the tables in the outdoor dining area to provide knee clearance of at least 27 inches in height, 30 inches in width and 19 inches in depth (see CBC 1122B.3, ADAAG 4.32.2 and ADAAG Figure 45). The table top height shall not exceed 34 inches above the finished floor.

**Commons/Lunch Area**

**Finding:** The knee space at the tables in the outdoor dining area is less than 27 inches high and 19 inches deep.

**Alternative \***  
**Rec:**  
**(Where Available)**



**Outdoor Dining Area Next to the Food Service Building**

Citations: CBC 1122B.3; ADAAG 4.32.2; ADAAG 4.32.5(2)

Minimum Quantity:	1
Maximum Quantity	1
<b>Minimum Estimated Cost:</b>	<b>\$174.00</b>
<b>Maximum Estimated Cost:</b>	<b>\$174.00</b>

Record Number:: 1588

Priority:

**Full Rec:** Modify or replace one of the tables in the outdoor dining area to provide knee clearance of at least 27 inches in height, 30 inches in width and 19 inches in depth (see CBC 1122B.3, ADAAG 4.32.2 and ADAAG Figure 45). The table top height shall not exceed 34 inches above the finished floor.



**Verdugo Park  
Commons/Lunch Area**

**Finding:** The knee space at the tables in the outdoor dining area is less than 19 inches deep.

**Alternative \***  
**Rec:**  
**(Where Available)**



**Outdoor Dining Area Next to the Maintenance Building**

**Full Rec:** Modify or replace one of the tables in the outdoor dining area to provide knee clearance of at least 27 inches in height, 30 inches in width and 19 inches in depth (see CBC 1122B.3, ADAAG 4.32.2 and ADAAG Figure 45). The table top height shall not exceed 34 inches above the finished floor.

Citations: CBC 1122B.3; ADAAG 4.32.2; ADAAG 4.32.5(2)

Minimum Quantity:	1
Maximum Quantity	1
<b>Minimum Estimated Cost:</b>	\$174.00
<b>Maximum Estimated Cost:</b>	\$174.00

Record Number:: 1589

Priority:

**Playground and Outdoor Sports Areas**

**Finding:** The surface under the bleachers is concrete. No wheelchair seating is provided next to the bleachers.

**Alternative \***  
**Rec:**  
**(Where Available)**



**Baseball Field**

**Full Rec:** Provide accessible wheelchair seating areas adjacent to the bleachers with equivalent line of sight as provided to members of the general public, if technically feasible; otherwise provide accessible wheelchair seating areas adjacent to the bleachers where unobstructed sight lines can be provided (see CBC 1104B.4 and ADAAG 4.33.3). The wheelchair seating area should be outlined, and have the International Symbol of Accessibility to reserve it for wheelchair users.

Citations: CBC 1104B.4; ADAAG 4.33

Minimum Quantity:	1
Maximum Quantity	1
<b>Minimum Estimated Cost:</b>	\$237.00
<b>Maximum Estimated Cost:</b>	\$237.00

Record Number:: 1602

Priority:



**Verdugo Park  
Playground and Outdoor Sports Areas**

**Finding:** There is no signage at the ticket counter indicating the availability of accessible seating.

**Alternative \***  
**Rec:**  
**(Where Available)**

**Full Rec:** Post signage at the ticket counter indicating the availability and location of accessible seating areas (see CBC 1104B.3.4.1).



**Baseball Field**

Citations: CBC 1104B.3.4.1; ADAAG 4.1.3(19)

Minimum Quantity:	1
Maximum Quantity:	1
<b>Minimum Estimated Cost:</b>	<b>\$107.00</b>
<b>Maximum Estimated Cost:</b>	<b>\$107.00</b>
Record Number::	1603
Priority:	

**Playground and Outdoor Sports Areas**

**Finding:** The grass and dirt surface of the baseball field at the facility prevents access to individuals with mobility impairments.

**Alternative \***  
**Rec:**  
**(Where Available)**

**Full Rec:** Provide an accessible route to the baseball field area where programs, services and activities are provided. The minimum width of the path of travel is 48 inches with 60 inch by 60 inch passing spaces provided every 200 feet. No protruding objects are permitted on the accessible path of travel. Accessible surfaces shall be firm, stable and slip resistant.



**Baseball Field**

Citations: CBC 1104B.1.2; CBC 1124B.1; ADAAG 4.33

Minimum Quantity:	1
Maximum Quantity:	1
<b>Minimum Estimated Cost:</b>	<b>\$360.00</b>
<b>Maximum Estimated Cost:</b>	<b>\$360.00</b>
Record Number::	1604
Priority:	

## Verdugo Park

### Playground and Outdoor Sports Areas

**Finding:** There are slopes greater than 6.33% along the path of travel to the baseball field.



**Baseball Field**

Citations: CBC 1104B.4.3; ADAAG 4.3.2; ADAAG 4.3.3; ADAAG 4.5

Minimum Quantity: 1

Maximum Quantity: 1

**Minimum Estimated Cost:** \$360.00

**Maximum Estimated Cost:** \$360.00

Record Number:: 1605

Priority:

#### Alternative \*

**Rec:**  
**(Where Available)**

**Full Rec:** Provide an accessible route to the baseball field (CBC 1104B.1.2 and ADAAG 4.3.2). The minimum width of the path of travel is 48 inches with 60 inch by 60 inch passing spaces provided every 200 feet and shall not exceed a slope greater than 6.33%. No protruding objects are permitted on the accessible path of travel. Accessible surfaces shall comply with CBC 1124B.1 and ADAAG 4.5 and shall be firm, stable and slip resistant.

### Playground and Outdoor Sports Areas

**Finding:** The height of the concession counter at the Food Service Building is greater than 36 inches.



**Food Service Building**

Citations: ADAAG 7.2

Minimum Quantity: 1

Maximum Quantity: 1

**Minimum Estimated Cost:** \$129.00

**Maximum Estimated Cost:** \$129.00

Record Number:: 1601

Priority:

#### Alternative \*

**Rec:**  
**(Where Available)**

**Full Rec:** Lower the concession counter to a height between 28 inches and 36 inches above the ground level (see ADAAG 7.2).

## Verdugo Park

### Playground and Outdoor Sports Areas

**Finding:** The surface at the play area is sand, making the area nonaccessible to individuals with mobility impairments.



**Play Area Next to the Skate Park**

Citations: CBC 1118B.3; ADAAG 4.5; ADAAG A4.5.1)

Minimum Quantity:	1
Maximum Quantity	1
<b>Minimum Estimated Cost:</b>	\$300.00
<b>Maximum Estimated Cost:</b>	\$300.00
Record Number::	1594
Priority:	

**Alternative \***  
**Rec:**  
**(Where Available)**

**Full Rec:** The play area should be made an accessible play area for the facility. Provide a maneuvering space with an accessible resilient surface beneath the play components and adjacent to the play components where technically feasible. An adequate maneuvering space has an accessible surface and is not less than 60 inches by 60 inches where an individual with a mobility impairment can be a part of the activities provided at the play components.

### Playground and Outdoor Sports Areas

**Finding:** The path of travel to the play area consists of grass, making the area nonaccessible to individuals with mobility impairments. The surface beneath the play area is sand, making the area nonaccessible to individuals with mobility impairments.



**Play Equipment at the North End of the Park**

Citations: CBC 1104B.1.2; CBC 1124B.1; ADAAG 4.3.2; ADAAG 4.5

Minimum Quantity:	1
Maximum Quantity	1
<b>Minimum Estimated Cost:</b>	\$360.00
<b>Maximum Estimated Cost:</b>	\$360.00
Record Number::	1606
Priority:	

**Alternative \***  
**Rec:**  
**(Where Available)**

**Full Rec:** Provide an accessible route to the play area (CBC 1104B.1.2 and ADAAG 4.3.2). The minimum width of the path of travel is 48 inches that provides a firm, stable and slip resistant surface. Provide a maneuvering space with an accessible resilient surface beneath the play components and adjacent to the play components where technically feasible. An adequate maneuvering space has an accessible surface and is not less than 60 inches by 60 inches where an individual with a mobility impairment can be a part of the activities provided at the play components.

## Verdugo Park

### Playground and Outdoor Sports Areas

**Finding:** There are slopes greater than 6.33% along the path of travel to the play area.



#### ***Play Equipment Next to the Skate Park***

Citations: CBC 1104B.1.2; CBC 1124B.1; ADAAG 4.3.2; ADAAG 4.5

Minimum Quantity:	1
Maximum Quantity	1
<b>Minimum Estimated Cost:</b>	\$360.00
<b>Maximum Estimated Cost:</b>	\$360.00
Record Number::	1592
Priority:	

**Full Rec:** Provide an accessible route to the play area (CBC 1104B.1.2 and ADAAG 4.3.2). The minimum width of the path of travel is 48 inches with 60 inch by 60 inch passing spaces provided every 200 feet and shall not exceed a slope greater than 6.33%. No protruding objects are permitted on the accessible path of travel. Accessible surfaces shall comply with CBC 1124B.1 and ADAAG 4.5 and shall be firm, stable and slip resistant.

### Playground and Outdoor Sports Areas

**Finding:** The surface beneath the play equipment is wood chips, making the area nonaccessible to individuals with mobility impairments.



#### ***Play Equipment Next to the Skate Park***

Citations: CBC 1118B.3; ADAAG 4.5; ADAAG A4.5.1)

Minimum Quantity:	1
Maximum Quantity	1
<b>Minimum Estimated Cost:</b>	\$300.00
<b>Maximum Estimated Cost:</b>	\$300.00
Record Number::	1593
Priority:	

**Full Rec:** The play area should be made an accessible play area for the facility. Provide a maneuvering space with an accessible resilient surface beneath the play components and adjacent to the play components where technically feasible. An adequate maneuvering space has an accessible surface and is not less than 60 inches by 60 inches where an individual with a mobility impairment can be a part of the activities provided at the play components.

**Alternative \***  
**Rec:**  
**(Where Available)**



**Verdugo Park  
Playground and Outdoor Sports Areas**

**Finding:** The path of travel to the bull pen is grass, preventing access to individuals with mobility impairments.

**Alternative \***  
**Rec:**  
**(Where Available)**

**Full Rec:** Install an accessible route to where programs, services and activities are provided (see CBC 1114B.1.2 and ADAAG 4.3.2). The minimum width of the path of travel shall be 48 inches with a firm, stable and slip-resistant surface. No protruding objects are permitted on the accessible path of travel and slopes shall not exceed 5% in the direction of travel.



**Stengel Field**

Citations: CBC 1114B.1.2; ADAAG 4.3.6

Minimum Quantity:	1
Maximum Quantity	1
<b>Minimum Estimated Cost:</b>	<b>\$1,440.00</b>
<b>Maximum Estimated Cost:</b>	<b>\$1,440.00</b>
Record Number::	1420
Priority:	

**Playground and Outdoor Sports Areas**

**Finding:** The grass and dirt surface of the baseball field at the facility prevents access to individuals with mobility impairments.

**Alternative \***  
**Rec:**  
**(Where Available)**

**Full Rec:** Provide an accessible route to the baseball field area where programs, services and activities are provided. The minimum width of the path of travel is 48 inches with 60 inch by 60 inch passing spaces provided every 200 feet. No protruding objects are permitted on the accessible path of travel. Accessible surfaces shall be firm, stable and slip resistant.



**Stengel Field**

Citations: CBC 1104B.1.2; CBC 1124B.1; ADAAG 4.33

Minimum Quantity:	1
Maximum Quantity	1
<b>Minimum Estimated Cost:</b>	<b>\$360.00</b>
<b>Maximum Estimated Cost:</b>	<b>\$360.00</b>
Record Number::	1599
Priority:	

**Verdugo Park  
Playground and Outdoor Sports Areas**

**Finding:** The surface under the bleachers is concrete. No wheelchair seating is provided next to the bleachers.

**Alternative \***  
**Rec:**  
**(Where Available)**

**Full Rec:** Provide accessible wheelchair seating areas adjacent to the bleachers with equivalent line of sight as provided to members of the general public, if technically feasible; otherwise provide accessible wheelchair seating areas adjacent to the bleachers where unobstructed sight lines can be provided (see CBC 1104B.4 and ADAAG 4.33.3). The wheelchair seating area should be outlined, and have the International Symbol of Accessibility to reserve it for wheelchair users.

**Playground and Outdoor Sports Areas**

**Finding:** There is no signage at the ticket counter indicating the availability of accessible seating.

**Alternative \***  
**Rec:**  
**(Where Available)**

**Full Rec:** Post signage at the ticket counter indicating the availability and location of accessible seating areas (see CBC 1104B.3.4.1).



**Stengel Field Stadium**

Citations: CBC 1104B.4; ADAAG 4.33

Minimum Quantity:	1
Maximum Quantity	1
<b>Minimum Estimated Cost:</b>	\$237.00
<b>Maximum Estimated Cost:</b>	\$237.00
Record Number::	1596
Priority:	



**Stengel Field Stadium**

Citations: CBC 1104B.3.4.1; ADAAG 4.1.3(19)

Minimum Quantity:	1
Maximum Quantity	1
<b>Minimum Estimated Cost:</b>	\$107.00
<b>Maximum Estimated Cost:</b>	\$107.00
Record Number::	1597
Priority:	



## Verdugo Park

### Playground and Outdoor Sports Areas

**Finding:** The press box at the stadium is stair-access only and is not accessible to individuals with mobility impairments.



**Stengel Field Stadium**

**Alternative Rec:** There are ways to provide access to the programs, services and activities at the press box without installing accessible vertical means to the press box area, to include electronic relay devices with electronic visual components (video camera or television) that offer the equivalent sight line provided from inside the press box. The electronic relays may be cabled to an accessible location where individuals with mobility impairments can access.

**Full Rec:** In most instances, press boxes are built and used by volunteers and the public, which mandates that access for individuals with disabilities be provided. This is difficult in most situations with the location of the press box usually located high above the assembly area. Vertical access may include installing an exterior enclosed platform lift or installing an equivalent press box at ground level with electronic relay devices and equipment that would provide the same line of sight viewing capability as that in the elevated press box.

Citations:

Minimum Quantity:	1
Maximum Quantity:	1
<b>Minimum Estimated Cost:</b>	\$0.00
<b>Maximum Estimated Cost:</b>	\$0.00
Record Number::	1598
Priority:	

### Playground and Outdoor Sports Areas

**Finding:** The height of the concession counter at the Stengel Field Stadium is greater than 36 inches.



**Stengel Field Stadium**

**Alternative \* Rec:** (Where Available)

**Full Rec:** Lower the concession counter to a height between 28 inches and 36 inches above the ground level (see ADAAG 7.2).

Citations: ADAAG 7.2

Minimum Quantity:	1
Maximum Quantity:	1
<b>Minimum Estimated Cost:</b>	\$129.00
<b>Maximum Estimated Cost:</b>	\$129.00
Record Number::	1600
Priority:	

## Verdugo Park Emergency Warning Systems

**Finding:** The facility shall have a fire and life safety emergency plan approved by the local building official that specifically addresses the evacuation of individuals with disabilities.

**Alternative \***  
**Rec:**  
**(Where Available)**

**Full Rec:** A fire and life safety emergency plan that specifically addresses the evacuation of individuals with disabilities must be approved by local building officials and the state fire official and comply with CFC Part 9 and CBC 1114B.2 for areas of rescue assistance.



Citations: CFC Part 9 & CBC 1114B.2

Minimum Quantity:	1
Maximum Quantity	1
<b>Minimum Estimated Cost:</b>	\$0.00
<b>Maximum Estimated Cost:</b>	\$0.00
Record Number::	1607
Priority:	

## Emergency Warning Systems

**Finding:** There are no visual warning devices in common areas of the facility.

**Alternative Rec:** Altering a facility's programs, or addressing higher priority barriers can reduce or eliminate the need for an area of rescue assistance, such as making certain that an individual with a disability participates in programs located near an already accessible exit. Otherwise creating an accessible exit can provide an acceptable alternative to providing an area of rescue assistance.

**Full Rec:** Install visual warning devices integrated with the facility's alarm system complying with CBC 1114B.2.5, ADAAG 4.1.3(14) and ADAAG 4.28 in all common areas such as hallways, general use rooms, and in accessible restrooms and other accessible rooms.



Citations: CBC 1114B.2.4; ADAAG 4.1.3(14); ADAAG 4.28

Minimum Quantity:	1
Maximum Quantity	1
<b>Minimum Estimated Cost:</b>	\$0.00
<b>Maximum Estimated Cost:</b>	\$288.00
Record Number::	1608
Priority:	