

# Accessibility Survey

## Americans with Disabilities Act And Title 24 of the California Building Code



## City of Glendale

### Downtown Parking Lot #15

208 N Orange Street

Inspected January 2008

Prepared By

Disability Access Consultants, Inc.  
(800) 743-7067



**Facility Name: Downtown Parking Lot #15**

**Programs, Services, and Activities**

**Finding:** Parking Lot #15 is located at 208 North Orange Street in Glendale, California. The parking lot was inspected by Disability Access Consultants, Inc., on January 16, 2008.



**Alternative Rec:  
(Where Available)**

**Full Rec:**

Citations:

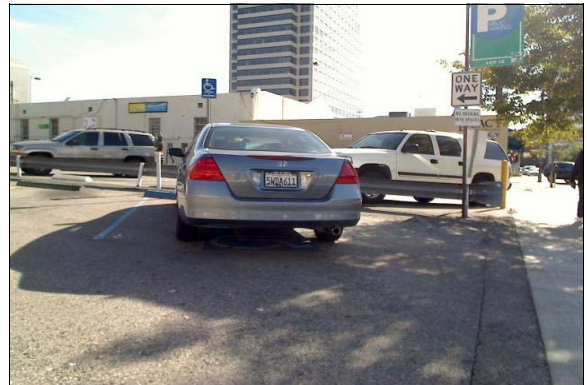
Minimum Quantity:	1
Maximum Quantity	1
<b>Minimum Estimated Cost:</b>	\$0.00
<b>Maximum Estimated Cost:</b>	\$0.00

Record Number:: 111

Priority:

**Parking**

**Finding:** There is one (1) accessible parking spaces out of 26 parking spaces which does not meet the minimum number for compliance. The accessible parking space is not outlined on the right side and does not have an access aisle. There is no designated "van-accessible" parking space.



**Accessible Parking**

**Alternative \* Rec:  
(Where Available)**

**Full Rec:** Two (2) out of 26 total parking spaces are required to be designated exclusively for accessible parking. Restripe the existing accessible space and create a van-accessible space so each measures at least 108 inches wide and 216 inches long. The van-accessible space shall provide an access aisle measuring at least 96 inches wide on the passenger side of the space. Add the words NO PARKING in 12 inch high white letters at the entrance to each accessible parking access aisle.

Citations: CBC 1129B; ADAAG 4.6; ADAAG A4.6

Minimum Quantity:	1
Maximum Quantity	2
<b>Minimum Estimated Cost:</b>	\$270.00
<b>Maximum Estimated Cost:</b>	\$540.00

Record Number:: 112

Priority:

**Facility Name: Downtown Parking Lot #15**

**Parking**

**Finding:** There is no accessible route between the accessible parking space and the public right of way.



**Accessible Parking**

Citations: CBC 1129B.4.3; ADAAG 4.7.1

**Alternative \***  
**Rec:**  
**(Where Available)**

**Full Rec:** Install a compliant path of travel from the sidewalk (public right of way) to the accessible parking space.

Minimum Quantity:	1
Maximum Quantity	2
<b>Minimum Estimated Cost:</b>	\$1,033.00
<b>Maximum Estimated Cost:</b>	\$2,066.00
Record Number::	113
Priority:	

**Parking**

**Finding:** The surface of the accessible parking space has a slope of 4.2%.



**Accessible Parking**

Citations: CBC 1129B; ADAAG 4.6.3

**Alternative \***  
**Rec:**  
**(Where Available)**

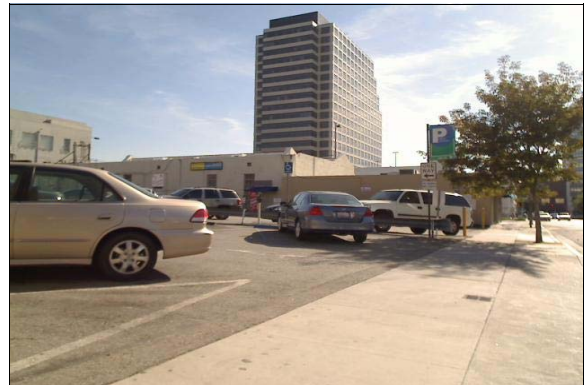
**Full Rec:** Pave the parking lot at the accessible space to provide a level surface. Parking surfaces and access aisles shall be located in areas not exceeding 2% slope in all directions (see CBC 1129B and ADAAG 4.6.3).

Minimum Quantity:	1
Maximum Quantity	1
<b>Minimum Estimated Cost:</b>	\$900.00
<b>Maximum Estimated Cost:</b>	\$900.00
Record Number::	114
Priority:	

**Facility Name: Downtown Parking Lot #15**

**Parking**

**Finding:** There is no warning signage posted at the entrance from North Orange Street regarding unauthorized use of accessible parking spaces in the parking lot.



**Accessible Parking**

Citations: CBC 1129B.5; ADAAG 4.6.4 CVC 22511.8(a)(d)

Minimum Quantity:	1
Maximum Quantity:	1
<b>Minimum Estimated Cost:</b>	<b>\$150.00</b>
<b>Maximum Estimated Cost:</b>	<b>\$150.00</b>
Record Number::	115
Priority:	

**Alternative \***  
**Rec:**  
**(Where Available)**

**Full Rec:** Post a sign in a conspicuous place at the parking lot entrance or immediately adjacent to and visible from each accessible space. The warning sign shall measure at least 17 inches by 22 inches in size and consist of lettering at least 1 inch in height that states the following; "Unauthorized vehicles parked in designated accessible spaces not displaying distinguishing placards or license plates issued for persons with disabilities may be towed away at owner's expense. Towed vehicles may be reclaimed at \_\_\_\_\_ or by telephoning \_\_\_\_ ." Fill in the blank spaces with appropriate information as a permanent part of the sign and be sure to add the CVC 22511.8(a)(d) to the sign.

**Parking**

**Finding:** There is vertically-mounted signage at the accessible parking space, however, the signs use the word "Handicapped".



**Accessible Parking**

Citations: CBC 1129B.5; ADAAG 4.6.4

Minimum Quantity:	1
Maximum Quantity:	2
<b>Minimum Estimated Cost:</b>	<b>\$150.00</b>
<b>Maximum Estimated Cost:</b>	<b>\$300.00</b>
Record Number::	117
Priority:	

**Alternative \***  
**Rec:**  
**(Where Available)**

**Full Rec:** Install a permanently posted reflectorized sign measuring 70 square inches that includes an ISA symbol adjacent to and visible from the accessible parking space (see CBC 1129B.5). The bottom edge of the sign must be mounted 80 inches from the ground surface so that it cannot be obscured by a parked vehicle (see CBC 1129B.5). The "van-accessible" parking space shall provide an additional sign marked "van-accessible" mounted below the sign (see CBC 1129B.5 and ADAAG 4.6.4).

**Facility Name: Downtown Parking Lot #15**

---

**Path of Travel**

**Finding:** There is no accessible route from the public right of way to the parking lot or to the accessible parking space.



***Accessible Route from the Public Right of Way***

Citations: CBC 1114B.1.2; CBC 1117B.5.7; CBC 1127B.3; ADAAG 4.1.2(7); ADAAG 4.3.2; ADAAG 4.14.1

Minimum Quantity:	1
Maximum Quantity	1
<b>Minimum Estimated Cost:</b>	\$107.00
<b>Maximum Estimated Cost:</b>	\$0.00

Record Number:: 116

Priority:

**Alternative \***  
**Rec:**  
**(Where Available)**

**Full Rec:** Provide at least one accessible route from the public right of way to the parking lot and to the accessible parking spaces. Make certain to post signage indicating the direction of the accessible route to the public right of way. Signs shall include the International Symbol of Accessibility.